

136
02/16/16

BRIDGE AND APPROACHES - CCS LETTING DATE
PROJ NO. L-B(X14)--73-97

LEGEND

INTERSTATE HIGHWAY	
PRIMARY HIGHWAY-DIVIDED	
PRIMARY HIGHWAY	
PORTLAND CEMENT CONCRETE ROAD	
ASPHALT ROAD	
BITUMINOUS ROAD	
GRAVEL ROAD	
EARTHEN ROAD	
INTERSTATE HIGHWAY	
UNITED STATES HIGHWAY	
STATE HIGHWAY	
COUNTY HIGHWAY	
RAILROAD	
PIPELINE	
AIRPORT	
HYDROLOGY	
BRIDGE	
STATE BOUNDARY	
COUNTY BOUNDARY	
CORPORATE BOUNDARY	
TOWNSHIP LINE	
SECTION LINE	
ROAD NAMES	
UNINCORPORATED PLACE	
ABNEY ROAD	
ELWOOD	

PLANS OF PROPOSED IMPROVEMENTS ON THE
SECONDARY ROAD SYSTEM
WOODBURY COUNTY
PROJECT NO. L-B(X14)--73-97
BRIDGE AND APPROACHES - CCS
280TH STREET OVER STREAM

THE IOWA DEPARTMENT OF TRANSPORTATION STANDARD SPECIFICATIONS FOR HIGHWAY AND BRIDGE CONSTRUCTION, SERIES 2015, PLUS APPLICABLE GENERAL SUPPLEMENTAL SPECIFICATIONS, DEVELOPMENTAL SPECIFICATIONS, SUPPLEMENTAL SPECIFICATIONS AND SPECIAL PROVISIONS SHALL APPLY TO CONSTRUCTION WORK ON THIS PROJECT.

THIS PROJECT SHALL BE CONSTRUCTED IN ACCORDANCE WITH THE REQUIREMENTS OF U.S. ARMY CORPS OF ENGINEERS NATIONWIDE, PERMIT NO. A COPY OF THIS PERMIT IS AVAILABLE FROM THE WOODBURY COUNTY ENGINEER'S OFFICE UPON REQUEST. THE U.S. ARMY CORPS OF ENGINEERS RESERVES THE RIGHT TO VISIT THE SITE WITHOUT PRIOR NOTICE.

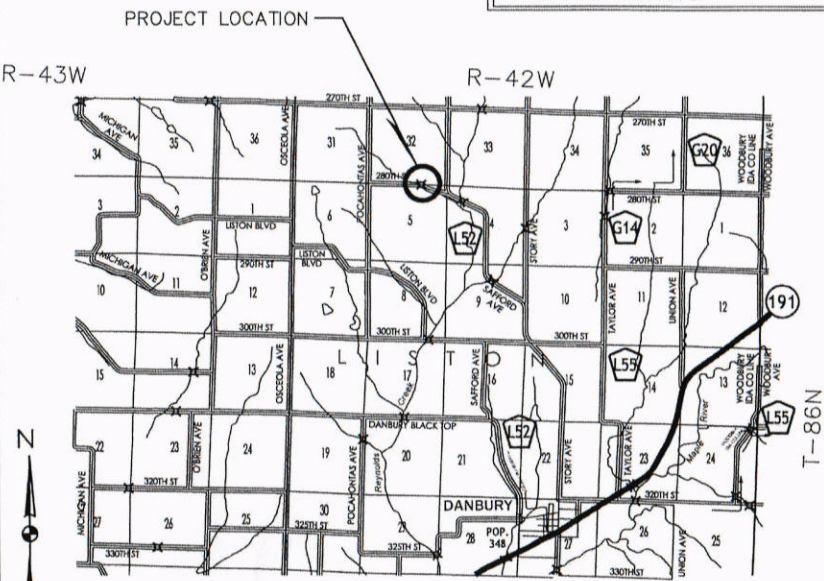
ENGLISH STANDARD BRIDGE PLANS

STANDARD	ISSUED	REVISED
J30-01A-06	NOV. 2006	06-13
J30-06E-06	NOV. 2006	04-13
J30-07E-06	NOV. 2006	07-09
J30-20-06	NOV. 2006	06-12
J30-22-06	NOV. 2006	07-09
J30-23-06	NOV. 2006	05-14
J30-24-06	NOV. 2006	07-09
J30-37-06	NOV. 2006	06-13
J30-38-06	NOV. 2006	06-13
J30-39-06	NOV. 2006	07-09
J30-43-06	NOV. 2006	12-08
J30-44-06	NOV. 2006	07-09
J30-45-06	NOV. 2006	12-08
J30-46-06	NOV. 2006	09-14
J30-48-06	NOV. 2006	09-14
P10L	JAN. 2009	04-13

TOTAL SHEETS	
18	
PROJECT NUMBER	
L-B(X14)--73-97	
FHWA STRUCTURE NUMBER	
349990	

INDEX OF SHEETS

NO.	DESCRIPTION
1	TITLE SHEET
2	QUANTITIES
3	ERI NOTES
4	GENERAL NOTES
5	SITUATION PLAN
6	PLAN AND PROFILE
7	SHAPING PLAN
8	TOP OF SLAB ELEVATIONS
9-10	TABULATIONS
11	BORING LOGS
12-18	ROADWAY CROSS SECTIONS



DESIGN DATA RURAL

2011 AADT	15	V.P.D.
2036 AADT	25	V.P.D.
20 DHV		V.P.H.
TRUCKS	0	%
Total Design ESALs		

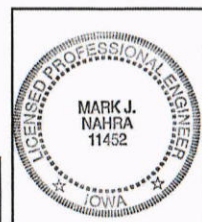
Jeremy Taylor
JEREMY TAYLOR (CHAIRPERSON)

Mark Monson
MARK MONSON

Matthew A. Ung
MATTHEW A. UNG

Larry Clausen
LARRY CLAUSEN

Jaclyn Smith
JACLYN SMITH
BOARD OF SUPERVISORS



I hereby certify that this engineering document was prepared by me or under my direct personal supervision and that I am a duly licensed Professional Engineer under the laws of the State of Iowa.

Mark J. Nahra 2/16/2016
Date

Iowa Registration Number 11452
Expiration Date 12/31/2016

Pages or sheets covered by this seal:
Sheets 1 Through 18

MILEAGE SUMMARY

Div.	Location	Lin. Ft.	Miles
	STA. 99+00.00 TO STA. 103+92.43	492.43	0.093

105-1
09-27-94

STANDARD ROAD PLANS
STANDARD ROAD PLANS ARE LISTED ON SHEET 10

LOCATION MAP
(NOT TO SCALE)



WOODBURY COUNTY - FHWA STRUCTURE NO. 349990

ENGLISH