

A G E N D A

WOODBURY COUNTY BOARD OF SUPERVISORS

TUESDAY, SEPTEMBER 23, 2014

ITEMS OF BUSINESS

- 10:00 a.m.** 1. Call Meeting to Order, Approval of Minutes of the September 16, 2014, Meeting
- 10:01 a.m.** 2. Discussion and Approval of Claims
- 10:02 a.m.** 3. Human Resources – Ed Gilliland
Re: Approval of Retiree Request for Spouse to Remain on County Health Insurance Plan
- 10:03 a.m.** 4. Approval of Resolution for Abatement of Taxes for County Farm
- 10:04 a.m.** 5. Siouxland District Health – Kevin Grieme
Re: Approval of Funding Proposal to the Centers of Disease Control
- 10:09 a.m.** 6. SIMPCO – Dwight Lang & Emergency Services – Gary Brown
Re: Approval of Resolution Adopting the Woodbury County Multi-Jurisdictional Local Hazard Mitigation Plan
- 10:14 a.m.** 7. Board Administration – Karen James
- 10:15 a.m.** a. Approval of Resolution for Notice of Property Sale Parcel #570825
(Set time) b. Public Hearing and Sale of Property Parcel #264990 (aka 2005 W. Palmer Ave.)
- 10:17 a.m.** 8. Hearing of any Individual/Group to Make a Presentation of Item(s) Not On the Agenda And Supervisors' Concerns

ADJOURNMENT

Subject to Additions/Deletions

WOODBURY COUNTY BOARD OF SUPERVISORS

TUESDAY, SEPTEMBER 23, 2014

CALENDAR OF EVENTS

| | | |
|---------------------------|-------------------|---|
| TUESDAY, SEPT. 23 | 2:00 p.m. | Decat Board Meeting, Western Hills AEA, Room F |
| WEDNESDAY, OCT. 1 | 12:00 noon | District Board of Health Meeting, 1014 Nebraska St. |
| THURSDAY, OCT. 2 | 5:00 p.m. | Conservation Board Meeting, Dorothy Pecaut Nature Center, Stone |
| MONDAY, OCT. 6 | 6:00 p.m. | Board of Adjustment meeting, Board of Supervisors' Chambers |
| TUESDAY, OCT. 7 | 4:00 p.m. | Veteran Affairs Meeting, Veteran Affairs Office, 1211 Tri-View Ave. |
| WEDNESDAY, OCT. 8 | 8:05 a.m. | Woodbury County Information Communication Commission, Board of Supervisors' Chambers |
| THURSDAY, OCT. 9 | 7:00 p.m. | Siouxland Mental Health Center, Board Meeting, 625 Court Street |
| | 12:00 p.m. | SIMPCO Board of Directors, 1122 Pierce St, Sioux City, Iowa |
| TUESDAY, OCT. 14 | 10:00 a.m. | Senior Center Board of Directors Meeting, 313 Cook Street |
| WEDNESDAY, OCT. 15 | 12:00 noon | Siouxland Economic Development Corporation Meeting, Marina Inn |
| THURSDAY, OCT. 16 | 11:00 a.m. | Siouxland Regional Transit Systems (SRTS) Board Meeting, SIMPCO Office, 1122 Pierce St., Sioux City, Iowa |
| TUESDAY, OCT. 21 | 4:30 p.m. | Community Action Agency of Siouxland Board Meeting, 2700 Leech Avenue |
| MONDAY, OCT. 27 | 6:00 p.m. | Zoning Commission Meeting, Board of Supervisors' Chambers |
| | 7:30 p.m. | Fair Board Meeting, Woodbury County Fair Office, Fairgrounds, Merville, Iowa. |
| MONDAY, NOV. 3 | 6:00 p.m. | Board of Adjustment meeting, Board of Supervisors' Chambers |
| TUESDAY, NOV. 4 | 4:00 p.m. | Veteran Affairs Meeting, Veteran Affairs Office, 1211 Tri-View Ave. |
| WEDNESDAY, NOV. 5 | 12:00 noon | District Board of Health Meeting, 1014 Nebraska St. |
| THURSDAY, NOV. 6 | 5:00 p.m. | Conservation Board Meeting, Dorothy Pecaut Nature Center, Stone Park |

Woodbury County is an Equal Opportunity Employer. In compliance with the Americans with Disabilities Act, the County will consider reasonable accommodations for qualified individuals with disabilities and encourages prospective employees and incumbents to discuss potential accommodations with the Employer.

Federal and state laws prohibit employment and/or public accommodation discrimination on the basis of age, color, creed, disability, gender identity, national origin, pregnancy, race, religion, sex, sexual orientation or veteran's status. If you believe you have been discriminated against, please contact the Iowa Civil Rights Commission at 800-457-4416 or Iowa Department of Transportation's civil rights coordinator. If you need accommodations because of a disability to access the Iowa Department of Transportation's services, contact the agency's affirmative action officer at 800-262-0003.

SEPTEMBER 16, 2014 — THIRTYEIGHTH MEETING OF THE WOODBURY COUNTY BOARD OF SUPERVISORS

The Board of Supervisors met on Tuesday, September 16, 2014 at 10:00 a.m. Board members present were Clausen, Smith, Boykin, Tripp and Monson. Staff members present were Karen James, Board Administrative Coordinator, Dennis Butler, Finance/Operations Controller, Joshua Widman, Assistant County Attorney, and Patrick Gill, Auditor/Clerk to the Board.

1. The meeting was called to order.

Motion by Monson second by Tripp to approve the minutes of the 09/09/2014 Board meeting. Carried 5-0. Copy filed.

2. Motion by Clausen second by Tripp to approve the County's claims totaling \$553,453.10. Carried 4-0; Boykin abstained. Copy filed.

- 3a. Motion by Tripp second by Clausen to approve the appointment of Krystle Smith, M.V. Clerk II, County Treasurer Dept., effective 09/17/14, \$14.96/hour. Job Vacancy Posted 7-9-14. Entry Level Salary: \$14.96/hour; and the reclassification of Susan Ahlquist, M.V. Clerk II, County Treasurer Dept., effective 09/28/14, \$17.33/hour, 5.4%=\$.90/hr. Per AFSCME Courthouse Contract agreement, from Grade 3/Step 3 to Grade 3/Step 4. Carried 5-0. Copy filed.

- 3b. Discussion on United Way campaign.

Motion by Smith second by Tripp to approve an expenditure from Hard Rock funds for a United Way incentive program of \$750.00 and award 2 one day off vacation as a raffle prize for new or increased donations of at least \$1.00 per pay period. Carried 4-0; Boykin abstained.

- 3c. The Board discussed County employee flu shots with Human Resources Director Ed Gilliland.

Motion by Monson second by Smith to approve and authorize the administration of influenza vaccine to County employees for the fiscal year 2014-2015 by Mercy Business Occupational Health. Carried 5-0.

4. Presentation of Resolution Thanking and Commending William L. Anderson for Years of Service.

5. Motion by Tripp second by Monson to approve and receive for signatures a Resolution thanking and commending Danny McCoy for his years of service to Woodbury County. Carried 5-0.

**WOODBURY COUNTY, IOWA
RESOLUTION #12,075
A RESOLUTION THANKING AND COMMENDING
DANNY MCCOY
FOR HIS SERVICE TO WOODBURY COUNTY**

WHEREAS, Danny McCoy has capably served Woodbury County as an employee of the Woodbury County Secondary Roads Department for 43 years from October 7, 1971 to October 6, 2014; and

WHEREAS, the service given by Danny McCoy as a Woodbury County employee, has been characterized by his dedication to the best interests of the citizens of Woodbury County; and

NOW THEREFORE, BE IT RESOLVED BY THE BOARD OF SUPERVISORS OF WOODBURY COUNTY, IOWA that the undersigned members of this Board thanks and commends Danny McCoy for his years of service to Woodbury County; and

BE IT FURTHER RESOLVED that it is the wish of all those signing below that the future hold only the best for this very deserving person, Danny McCoy.

BE IT SO RESOLVED this 16th day of September, 2014.
WOODBURY COUNTY BOARD OF SUPERVISORS

Copy filed.

Motion by Monson second by Clausen to approve and receive for signatures a Resolution thanking and commending Franklin Wigand for his years of service to Woodbury County. Carried 5-0.

**WOODBURY COUNTY, IOWA
RESOLUTION #12,076
A RESOLUTION THANKING AND COMMENDING
FRANKLIN WIGAND
FOR HIS SERVICE TO WOODBURY COUNTY**

WHEREAS, Franklin Wigand has capably served Woodbury County as an employee of the Woodbury County Secondary Roads Department for 38 years from March 16, 1976 to September 26, 2014; and

WHEREAS, the service given by Franklin Wigand as a Woodbury County employee, has been characterized by his dedication to the best interests of the citizens of Woodbury County; and

NOW THEREFORE, BE IT RESOLVED BY THE BOARD OF SUPERVISORS OF WOODBURY COUNTY, IOWA that the undersigned members of this Board thanks and commends Franklin Wigand for his years of service to Woodbury County; and

BE IT FURTHER RESOLVED that it is the wish of all those signing below that the future hold only the best for this very deserving person, Franklin Wigand.

BE IT SO RESOLVED this 16th day of September, 2014.

WOODBURY COUNTY BOARD OF SUPERVISORS

Copy filed.

- 6. Motion by Clausen second by Smith to receive the appointment of Brad Baldwin, 100 Oak St., Bronson, IA, to the Bronson City Council for the office previously held by Dave Junge until the next regular election. Carried 5-0. Copy filed.
- 7. Motion by Clausen second by Monson to approve and authorize the Chairperson to sign a Resolution authorizing tax abatement for Faith Christian Reform Church, parcel #894728402022. Carried 5-0.

**WOODBURY COUNTY, IOWA
RESOLUTION #12,077
RESOLUTION APPROVING ABATEMENT OF TAXES**

WHEREAS, Faith Christian Reformed Church is the titleholder of real estate Parcel #894728402022 located in Woodbury County, Iowa and legally described as follows:

Parcel #894728402022

Lot One (1) & Lot Two (2) Block Forty-seven (47) Middle Sioux City Addition, City of Sioux City, Woodbury County, Iowa

WHEREAS, the above-stated property has taxes owing for the 2013-2014 tax year, and the parcel is owned by Faith Christian Reformed Church; and

WHEREAS, the organization, namely Faith Christian Reformed Church is failing to immediately pay the taxes due; and

WHEREAS, the Board of Supervisors sees that good cause exists for the abatement of these taxes and; and

NOW, THEREFORE, BE IT RESOLVED, that the Woodbury County Board of Supervisors hereby abates the taxes owing on the above parcel according to Code of Iowa, 445.16 for the taxes owed for the tax year 2013/2014, and hereby directs the Woodbury County Treasurer to abate these aforementioned taxes from the tax records.

SO RESOLVED this 16th day of September, 2014.
WOODBURY COUNTY BOARD OF SUPERVISORS
Copy filed.

- 8a. Motion by Tripp second by Monson to approve and authorize the Chairperson to sign a release of real estate mortgage. Carried 5-0. Copy filed.
- 8b. Motion by Monson second by Tripp to approve filing of UCC3 to Iowa Secretary of State for termination of real estate mortgage. Carried 5-0. Copy filed.
- 9. Motion by Clausen second by Smith to approve the Detention daily rate increase. Carried 5-0. Copy filed.
- 10. Motion by Monson second by Tripp to approve and authorize the Chairperson to sign a Resolution accepting Fauth Addition (A Minor Subdivision), GIS Parcel #894534400006 into Woodbury County. Carried 5-0.

**BOARD OF SUPERVISORS
RESOLUTION #12,078
RESOLUTION ACCEPTING AND APPROVING
FAUTH ADDITION (A MINOR SUBDIVISION)
TO WOODBURY COUNTY, IOWA**

WHEREAS, THE OWNER AND PROPRIETOR DID ON}

THE 4th DAY OF AUGUST, 2014, FILE WITH THE WOODBURY COUNTY ZONING COMMISSION A CERTAIN PLAT DESIGNATED AS FAUTH ADDITION, A MINOR SUBDIVISION TO WOODBURY COUNTY, IOWA; AND

WHEREAS, IT APPEARS THAT SAID PLAT CONFORMS WITH ALL OF THE PROVISIONS OF THE CODE OF THE STATE OF IOWA AND ORDINANCES OF WOODBURY COUNTY, IOWA, WITH REFERENCE TO THE FILING OF SAME; AND

WHEREAS, THE ZONING COMMISSION OF WOODBURY COUNTY, IOWA HAS RECOMMENDED THE ACCEPTANCE AND APPROVAL OF SAID PLAT; AND

WHEREAS, THE COUNTY ENGINEER OF WOODBURY COUNTY, IOWA HAS RECOMMENDED THE ACCEPTANCE AND APPROVAL OF SAID PLAT.

NOW THEREFORE, BE, AND IT IS HEREBY RESOLVED BY THE WOODBURY COUNTY BOARD OF SUPERVISORS, WOODBURY COUNTY, STATE OF IOWA, THAT THE PLAT OF FAUTH ADDITION, A MINOR SUBDIVISION TO WOODBURY COUNTY, IOWA BE, AND THE SAME IS HEREBY ACCEPTED AND APPROVED, AND THE CHAIRMAN AND SECRETARY OF THE WOODBURY COUNTY BOARD OF SUPERVISORS, WOODBURY COUNTY, STATE OF IOWA, ARE HEREBY DIRECTED TO FURNISH TO THE OWNER AND PROPRIETOR A CERTIFIED COPY OF THIS RESOLUTION AS REQUIRED BY LAW.

PASSED AND APPROVED THIS 16TH DAY OF SEPTEMBER, 2014.
WOODBURY COUNTY BOARD OF SUPERVISORS
Copy filed.

- 11a. Motion by Tripp second by Monson to receive bid for a Hydraulic Excavator and to refer them to the County Engineer for review and recommendation. Carried 5-0.

The bids is as follows:

| | |
|---------------------------------------|--|
| Mid Country Machinery, Sgt. Bluff, IA | \$266,500.00 |
| Steve King, Lawton, IA | \$25,000.00 to purchase the used equipment |

Copy filed.

- 11b. Motion by Tripp second by Monson to approve and authorize the Chairperson to sign a permit for use of County Road/Highway Right-of-Way for overhead and/or buried utilities for Schaller Telephone. Carried 5-0. Copy filed.
- 11c. Motion by Monson second by Tripp to approve the plans for Project L-G-240 ST(2014)—73-97, 240th Street extension. Carried 5-0. Copy filed.
- 11d. Motion by Tripp second by Monson to approve the plans for grading project to replace bridge P6 (Special Bridge Levy Project). Carried 5-0. Copy filed.
- 11e. Motion by Monson second by Tripp to approve and authorize the Chairperson to sign a certificate of completion for Pavement Marking 2014 with Vogel Traffic Services. Carried 5-0. Copy filed.
12. Discussion on agreement with US Attorney's Office regarding Special Assistant US Attorney for Drug Prosecutions.
13. The Chairperson asked if there were any individuals or groups wishing to make a presentation of items not on the agenda, or Supervisors concerns.

Mark Nahra, County Engineer, discussed water levels at the gravel pit near Correctionville.
14. Motion by Monson second by Clausen to go into closed session per Iowa Code Section 21.5(1)(c). Carried 5-0 on a roll-call vote.


There was no closed session held because an attending party did not appear.

The Board adjourned the regular meeting until September 23, 2014.

**WOODBURY COUNTY
HUMAN RESOURCES DEPARTMENT**

MEMORANDUM

TO: Board of Supervisors

FROM: Ed Gilliland, Human Resources Director 
Gloria Mollet, Asst. Human Resources Director

RE: Retiree Request for Spouse to Remain on County Health Insurance Plan

DATE: September 23, 2014

Attached please find a copy of a letter from Ronald Uhl with the Woodbury County Secondary Roads Department. Mr. Uhl retired effective September 5, 2014. He is requesting Board Approval for his spouse to remain on the County's Health Insurance Plan at their own expense.

Please contact me should you have any questions.

Attachments

10:

Woodbury County Board of Supervisors

I am requesting permission to
continue my Health Care Insurance
Coverage on my wife Colleen Kay Uhl

Ronald W Uhl

WOODBURY COUNTY, IOWA

RESOLUTION # _____

RESOLUTION APPROVING ABATEMENT OF TAXES

WHEREAS, the Woodbury County, Iowa are the titleholders of real estate Parcels #884714300001, #884723100001, #884723100002 and #884723100004 located in Woodbury County, Iowa and legally described as follows:

Parcel #884714300001

Woodbury Township NW SW & SW SW 14-88-47

Parcel #884723100001

Woodbury Township NW NW 23-88-47

Parcel #884723100002

Woodbury Township SW NW 23-88-47

Parcel #884723100004

Woodbury Township SW of RD E ½ NW 23-88-47

WHEREAS, the above-stated property has an unpaid balance of taxes owing, and the parcel is owned by a political subdivision of the state; and

WHEREAS, the political subdivision, namely the Woodbury County, Iowa, is failing to immediately pay the taxes due; and

WHEREAS, the Board of Supervisors sees that good cause exists for the abatement of these taxes and any future taxes that may be levied against this parcel; and

NOW, THEREFORE, BE IT RESOLVED, that the Woodbury County Board of Supervisors hereby abates the taxes owing on the above parcels according to Code of Iowa, 445.63, and hereby directs the Woodbury County Treasurer to abate these aforementioned taxes from the tax records.

SO RESOLVED this 23rd day of September, 2014.

ATTEST:

WOODBURYCOUNTYBOARD OF SUPERVISORS

Patrick F. Gill
Woodbury County Auditor
And Recorder

George W. Boykin, Chairwoman

WOODBURY COUNTY TREASURER

MICHAEL R CLAYTON

620 DOUGLAS ST ROOM 102
SIOUX CITY IA 51101 PHONE (712) 279-6495 8847-14-300-001
taxdept@sioux-city.org

Receipt#
10490

WOODBURY COUNTY TREASURER

MICHAEL R CLAYTON

620 DOUGLAS ST ROOM 102
SIOUX CITY IA 51101 PHONE (712) 279-6495 8847-14-300-001
taxdept@sioux-city.org

Receipt#
10490

TOTAL TAX DUE: or **SEPT 1, 2014**

\$2,588.00

\$1,294.00

DED 002784116

Delinquent OCT 1, 2014

TAX DUE: **MARCH 1, 2015**

\$1,294.00

DED 002784116

Delinquent APRIL 1, 2015

WOODBURY COUNTY
620 DOUGLAS ST
SIOUX CITY IA 51101-0000

WOODBURY COUNTY
620 DOUGLAS ST
SIOUX CITY IA 51101-0000

PAY YOUR TAXES ONLINE AND CHECK YOUR TAX INFORMATION AT www.woodburyiowa.com

039 00 039 WOODBURY SGT BLUFF LUTON COMM 039 00 039 WOODBURY SGT BLUFF LUTON COMM

WOODBURY COUNTY REAL ESTATE TAXES, SEND THE CORRECT STUBS ALONG WITH YOUR CHECK FOR PAYMENT

SEE REVERSE SIDE FOR MORE INFORMATION

Based on JANUARY 1, 2013 Valuations. Taxes FOR JULY 1, 2013 - JUNE 30, 2014, payable SEPTEMBER 2014 and MARCH 2015

Parcel 8847-14-300-001 Location: WOODBURY

039 00 039 WOODBURY SGT BLUFF LUTON COMM Sect 014 Twn 088 Rng 047 Gross Acres 74.50
Exempt Acres .00
Net Acres 74.50

Legal Description WOODBURY TOWNSHIP NW SW & SW SW 14-88-47

| VALUATIONS AND TAXES THIS YEAR | | LAST YEAR | | TAXES DUE | Delinquent Tax, Specials, Drainage, Tax Sale |
|--------------------------------|-------------------|----------------|-------------------|---------------|--|
| AG | Assessed | Taxable | Assessed | Taxable | |
| Land: | 235,290 | 102,115 | 154,630 | 92,675 | |
| Buildings: | | | | | |
| Dwelling: | | | | | |
| TOTAL VALUE: | 235,290 | 102,115 | 154,630 | 92,675 | |
| Less Military Exemption: | | | | | |
| NET TAXABLE VALUE: | \$102,115 | | \$92,675 | | |
| Value Times Levy per 1000 of: | 26.2086700 | | 26.0902800 | | 002784116 00000000 00000000 |
| EQUALS GROSS TAX OF: | 2,676.30 | | 2,417.92 | | WOODBURY COUNTY |
| Less Credits of: | | | | | |
| Homestead Credit | | | | | 620 DOUGLAS ST |
| Ag Land Credit | | 87.57- | 101.13- | | SIOUX CITY IA 51101-0000 |
| Family Farm Credit | | | | | |
| Business Prop Tax Credit Fund | | | | | |
| Low Income/Elderly Credit | | | | | |
| Prepaid Tax | | | | | |
| NET ANNUAL TAXES: | \$2,588.00 | | \$2,316.00 | | |

House Tax: County EMS \$ 486,749.00

| Taxing Authority: | Distribution of your current & prior year taxes | | | Total property taxes levied by taxing authority | | |
|-------------------|---|----------|----------|---|---------------|-------------|
| | %Total | Current | Prior | Current | Prior | Percent +/- |
| SGT BLUFF LUTON | 48.406 | 1,252.74 | 1,145.09 | 4,960,465.00 | 4,713,698.00 | 5.235 |
| COUNTY | 43.557 | 1,127.25 | 980.78 | 28,333,075.00 | 26,785,261.00 | 5.778 |
| WEST IA TECH | 2.975 | 76.99 | 67.75 | 5,538,559.00 | 5,233,379.00 | 5.831 |
| WOODBURY TWP | 2.764 | 71.54 | 64.31 | 58,965.00 | 57,188.00 | 3.107 |
| CO ASSESSOR | 1.774 | 45.92 | 46.17 | 513,899.00 | 557,789.00 | 7.868- |
| CO EXTENSION | .511 | 13.23 | 11.61 | 436,719.00 | 422,558.00 | 3.351 |
| STATE | .013 | .33 | .29 | 10,754.00 | 11,735.00 | 8.359- |

Online Payment Available at: www.iowatreasurers.org

TOTALS: \$2,588.00 \$2,316.00 DUE SEPT 1, 2014 \$1,294.00 DUE MARCH 1, 2015 \$1,294.00

WOODBURY COUNTY TREASURER
MICHAEL R CLAYTON
620 DOUGLAS ST ROOM 102
SIOUX CITY IA 51101 PHONE (712) 279-6495
taxdept@sioux-city.org

Receipt#

14/15 10-10490

DUE SEPT 1, 2014

Date Paid: _____

CHECK# _____

DUE MARCH 1, 2015

Date Paid: _____

CHECK# _____

WOODBURY COUNTY TREASURER**MICHAEL R CLAYTON**620 DOUGLAS ST ROOM 102
SIOUX CITY IA 51101 PHONE (712) 279-6495 8847-23-100-001
taxdept@sioux-city.orgReceipt#
10786

Deed WOODBURY COUNTY COUNTY HOME

TOTAL TAX DUE: OF **SEPT 1, 2014****\$634.00****\$317.00**

DED 002784974

Delinquent OCT 1, 2014

WOODBURY COUNTY TREASURER**MICHAEL R CLAYTON**620 DOUGLAS ST ROOM 102
SIOUX CITY IA 51101 PHONE (712) 279-6495 8847-23-100-001
taxdept@sioux-city.orgReceipt#
10786

Deed WOODBURY COUNTY COUNTY HOME

TAX DUE: **MARCH 1, 2015****\$317.00**

DED 002784974

Delinquent APRIL 1, 2015

WOODBURY COUNTY FARM
620 DOUGLAS ST
SIOUX CITY IA 51101-0000WOODBURY COUNTY FARM
620 DOUGLAS ST
SIOUX CITY IA 51101-0000**PAY YOUR TAXES ONLINE AND CHECK YOUR TAX INFORMATION AT www.woodburyiowa.com**

039 00 039 WOODBURY SGT BLUFF LUTON COMM

039 00 039 WOODBURY SGT BLUFF LUTON COMM

WOODBURY COUNTY REAL ESTATE TAXES, SEND THE CORRECT STUBS ALONG WITH YOUR CHECK FOR PAYMENT

SEE REVERSE SIDE FOR MORE INFORMATION

Based on JANUARY 1, 2013 Valuations. Taxes FOR JULY 1, 2013 - JUNE 30, 2014, payable SEPTEMBER 2014 and MARCH 2015

Parcel 8847-23-100-001 Location: 1600 COUNTY HOME RD WOODBURY

| | | | | |
|--------|-----------------------------------|--------------------------|--------------|-------|
| 039 00 | 039 WOODBURY SGT BLUFF LUTON COMM | Sect 023 Twn 088 Rng 047 | Gross Acres | 23.99 |
| | | | Exempt Acres | .00 |
| | | | Net Acres | 23.99 |

Legal Description WOODBURY TOWNSHIP NW NW 23-88-47

VALUATIONS AND TAXES THIS YEAR**LAST YEAR****TAXES DUE**

Delinquent Tax, Specials, Drainage, Tax Sale

| AG | Assessed | Taxable | Assessed | Taxable |
|---------------------|---------------|---------------|---------------|---------------|
| Land: | 57,580 | 24,990 | 37,840 | 22,679 |
| Buildings: | | | | |
| Dwelling: | | | | |
| TOTAL VALUE: | 57,580 | 24,990 | 37,840 | 22,679 |

Less Military Exemption:

NET TAXABLE VALUE: \$24,990 \$22,679

Value Times Levy per 1000 of: 26.2086700 26.0902800 002784974 000000000 000000000

EQUALS GROSS TAX OF: 654.95 591.70 WOODBURY COUNTY COUNTY HOME

Less Credits of:

| | | | |
|-------------------------------|--------|--------|--|
| Homestead Credit | | | |
| Ag Land Credit | 21.43- | 24.75- | |
| Family Farm Credit | | | |
| Business Prop Tax Credit Fund | | | |
| Low Income/Elderly Credit | | | |
| Prepaid Tax | | | |

NET ANNUAL TAXES: \$634.00 \$566.00

SIOUX CITY IA 51101-0000

House Tax: County EMS \$ 486,749.00

Distribution of your current & prior year taxes

Total property taxes levied by taxing authority

| Taxing Authority: | %Total | Current | Prior | Current | Prior | Percent +/- |
|-------------------|--------|---------|--------|---------------|---------------|-------------|
| SGT BLUFF LUTON | 48.406 | 306.89 | 279.85 | 4,960,465.00 | 4,713,698.00 | 5.235 |
| COUNTY | 43.558 | 276.16 | 239.68 | 28,333,075.00 | 26,785,261.00 | 5.778 |
| WEST IA TECH | 2.975 | 18.86 | 16.56 | 5,538,559.00 | 5,233,379.00 | 5.831 |
| WOODBURY TWP | 2.763 | 17.52 | 15.72 | 58,965.00 | 57,188.00 | 3.107 |
| CO ASSESSOR | 1.774 | 11.25 | 11.28 | 513,899.00 | 557,789.00 | 7.868- |
| CO EXTENSION | .511 | 3.24 | 2.84 | 436,719.00 | 422,558.00 | 3.351 |
| STATE | .013 | .08 | .07 | 10,754.00 | 11,735.00 | 8.359- |

Online Payment Available at: www.iowatreasurers.org**TOTALS:** \$634.00 \$566.00**WOODBURY COUNTY TREASURER****MICHAEL R CLAYTON**620 DOUGLAS ST ROOM 102
SIOUX CITY IA 51101 PHONE (712) 279-6495
taxdept@sioux-city.org

Receipt#

14/15 10-10786

DUE SEPT 1, 2014

\$317.00

DUE MARCH 1, 2015

\$317.00

Date Paid: _____

Date Paid: _____

CHECK# _____

CHECK# _____

WOODBURY COUNTY TREASURER

MICHAEL R CLAYTON

620 DOUGLAS ST ROOM 102
SIOUX CITY IA 51101 PHONE (712) 279-6495 8847-23-100-002
taxdept@sioux-city.org

Receipt#
10787

Deed WOODBURY COUNTY COUNTY HOME

TOTAL TAX DUE: or **SEPT 1, 2014**

\$1,084.00

\$542.00

DED 002784974

Delinquent OCT 1, 2014

WOODBURY COUNTY TREASURER

MICHAEL R CLAYTON

620 DOUGLAS ST ROOM 102
SIOUX CITY IA 51101 PHONE (712) 279-6495 8847-23-100-002
taxdept@sioux-city.org

Receipt#
10787

Deed WOODBURY COUNTY COUNTY HOME

TAX DUE: **MARCH 1, 2015**

\$542.00

DED 002784974

Delinquent APRIL 1, 2015

WOODBURY COUNTY FARM
620 DOUGLAS ST
SIOUX CITY IA 51101-0000

WOODBURY COUNTY FARM
620 DOUGLAS ST
SIOUX CITY IA 51101-0000

PAY YOUR TAXES ONLINE AND CHECK YOUR TAX INFORMATION AT www.woodburyiowa.com

039 00 039 WOODBURY SGT BLUFF LUTON COMM 039 00 039 WOODBURY SGT BLUFF LUTON COMM

WOODBURY COUNTY REAL ESTATE TAXES, SEND THE CORRECT STUBS ALONG WITH YOUR CHECK FOR PAYMENT
SEE REVERSE SIDE FOR MORE INFORMATION

Based on JANUARY 1, 2013 Valuations. Taxes FOR JULY 1, 2013 - JUNE 30, 2014, payable SEPTEMBER 2014 and MARCH 2015

Parcel 8847-23-100-002 Location: WOODBURY

| | | | | |
|--------|-----------------------------------|--------------------------|--------------|-------|
| 039 00 | 039 WOODBURY SGT BLUFF LUTON COMM | Sect 023 Twn 088 Rng 047 | Gross Acres | 39.49 |
| | | | Exempt Acres | .00 |
| | | | Net Acres | 39.49 |

Legal Description WOODBURY TOWNSHIP SW NW 23-88-47

| VALUATIONS AND TAXES THIS YEAR | | LAST YEAR | | TAXES DUE | Delinquent Tax, Specials, Drainage, Tax Sale |
|--------------------------------|---------------|-------------------|---------------|-----------------|--|
| AG | Assessed | Taxable | Assessed | Taxable | |
| Land: | 98,440 | 42,723 | 64,690 | 38,771 | |
| Buildings: | | | | | |
| Dwelling: | | | | | |
| TOTAL VALUE: | 98,440 | 42,723 | 64,690 | 38,771 | |
| Less Military Exemption: | | | | | |
| NET TAXABLE VALUE: | | \$42,723 | | \$38,771 | |
| Value Times Levy per 1000 of: | 26.2086700 | | 26.0902800 | | 002784974 00000000 00000000 |
| EQUALS GROSS TAX OF: | | 1,119.71 | | 1,011.55 | WOODBURY COUNTY COUNTY HOME |
| Less Credits of: | | | | | |
| Homestead Credit | | | | | 620 DOUGLAS ST |
| Ag Land Credit | | 36.64- | | 42.31- | SIOUX CITY IA 51101-0000 |
| Family Farm Credit | | | | | M WOODBURY COUNTY FARM |
| Business Prop Tax Credit Fund | | | | | a |
| Low Income/Elderly Credit | | | | | i 620 DOUGLAS ST |
| Prepaid Tax | | | | | l SIOUX CITY IA 51101-0000 |
| NET ANNUAL TAXES: | | \$1,084.00 | | \$970.00 | |

House Tax: County EMS \$ 486,749.00

| Taxing Authority: | Distribution of your current & prior year taxes | | | Total property taxes levied by taxing authority | | |
|-------------------|---|---------|--------|---|---------------|-------------|
| | %Total | Current | Prior | Current | Prior | Percent +/- |
| SGT BLUFF LUTON | 48.406 | 524.72 | 479.59 | 4,960,465.00 | 4,713,698.00 | 5.235 |
| COUNTY | 43.557 | 472.16 | 410.78 | 28,333,075.00 | 26,785,261.00 | 5.778 |
| WEST IA TECH | 2.975 | 32.25 | 28.38 | 5,538,559.00 | 5,233,379.00 | 5.831 |
| WOODBURY TWP | 2.764 | 29.96 | 26.93 | 58,965.00 | 57,188.00 | 3.107 |
| CO ASSESSOR | 1.774 | 19.23 | 19.34 | 513,899.00 | 557,789.00 | 7.868- |
| CO EXTENSION | .511 | 5.54 | 4.86 | 436,719.00 | 422,558.00 | 3.351 |
| STATE | .013 | .14 | .12 | 10,754.00 | 11,735.00 | 8.359- |

Online Payment Available at: www.iowatreasurers.org

| | | | | | | |
|--|-----------------------|----------|------------------|----------|-------------------|----------|
| TOTALS: | \$1,084.00 | \$970.00 | DUE SEPT 1, 2014 | \$542.00 | DUE MARCH 1, 2015 | \$542.00 |
| WOODBURY COUNTY TREASURER | Receipt# | | Date Paid: _____ | | Date Paid: _____ | |
| MICHAEL R CLAYTON | 14/15 10-10787 | | CHECK# _____ | | CHECK# _____ | |
| 620 DOUGLAS ST ROOM 102 | | | | | | |
| SIOUX CITY IA 51101 PHONE (712) 279-6495 | | | | | | |
| taxdept@sioux-city.org | | | | | | |

WOODBURY COUNTY TREASURER**MICHAEL R CLAYTON**620 DOUGLAS ST ROOM 102
SIOUX CITY IA 51101 PHONE (712) 279-6495 8847-23-100-004
taxdept@sioux-city.orgReceipt#
10789**WOODBURY COUNTY TREASURER****MICHAEL R CLAYTON**620 DOUGLAS ST ROOM 102
SIOUX CITY IA 51101 PHONE (712) 279-6495 8847-23-100-004
taxdept@sioux-city.orgReceipt#
10789

Deed WOODBURY COUNTY COUNTY HOME

TOTAL TAX DUE: or **SEPT 1, 2014****\$2,206.00****\$1,103.00**

DED 002784974

Delinquent OCT 1, 2014

Deed WOODBURY COUNTY COUNTY HOME

TAX DUE: **MARCH 1, 2015****\$1,103.00**

DED 002784974

Delinquent APRIL 1, 2015

WOODBURY COUNTY FARM
620 DOUGLAS ST
SIOUX CITY IA 51101-0000WOODBURY COUNTY FARM
620 DOUGLAS ST
SIOUX CITY IA 51101-0000**PAY YOUR TAXES ONLINE AND CHECK YOUR TAX INFORMATION AT www.woodburyiowa.com**

039 00 039 WOODBURY SGT BLUFF LUTON COMM

039 00 039 WOODBURY SGT BLUFF LUTON COMM

WOODBURY COUNTY REAL ESTATE TAXES, SEND THE CORRECT STUBS ALONG WITH YOUR CHECK FOR PAYMENT

SEE REVERSE SIDE FOR MORE INFORMATION

Based on JANUARY 1, 2013 Valuations. Taxes FOR JULY 1, 2013 - JUNE 30, 2014, payable SEPTEMBER 2014 and MARCH 2015

Parcel 8847-23-100-004 Location: WOODBURY

039 00 039 WOODBURY SGT BLUFF LUTON COMM

Sect 023 Twn 088 Rng 047 Gross Acres 70.42
Exempt Acres .00
Net Acres 70.42

Legal Description WOODBURY TOWNSHIP SW OF RD E 1/2 NW 23 -88-47

VALUATIONS AND TAXES THIS YEAR**LAST YEAR****TAXES DUE**

Delinquent Tax, Specials, Drainage, Tax Sale

| AG | Assessed | Taxable | Assessed | Taxable |
|--------------------------|----------------|---------------|----------------|---------------|
| Land: | 200,540 | 87,034 | 131,790 | 78,986 |
| Buildings: | | | | |
| Dwelling: | | | | |
| TOTAL VALUE: | 200,540 | 87,034 | 131,790 | 78,986 |
| Less Military Exemption: | | | | |

NET TAXABLE VALUE: \$87,034 \$78,986

Value Times Levy per 1000 of: 26.2086700 26.0902800 002784974 000000000 000000000

EQUALS GROSS TAX OF: 2,281.05 2,060.77

Less Credits of:

| | | |
|-------------------------------|--------|--------|
| Homestead Credit | | |
| Ag Land Credit | 74.64- | 86.19- |
| Family Farm Credit | | |
| Business Prop Tax Credit Fund | | |
| Low Income/Elderly Credit | | |
| Prepaid Tax | | |

NET ANNUAL TAXES: **\$2,206.00** **\$1,974.00**

House Tax: County EMS \$ 486,749.00

| Taxing Authority: | Distribution of your current & prior year taxes | | | Total property taxes levied by taxing authority | | |
|-------------------|---|----------|--------|---|---------------|-------------|
| | %Total | Current | Prior | Current | Prior | Percent +/- |
| SGT BLUFF LUTON | 48.406 | 1,067.83 | 976.00 | 4,960,465.00 | 4,713,698.00 | 5.235 |
| COUNTY | 43.557 | 960.87 | 835.96 | 28,333,075.00 | 26,785,261.00 | 5.778 |
| WEST IA TECH | 2.975 | 65.62 | 57.74 | 5,538,559.00 | 5,233,379.00 | 5.831 |
| WOODBURY TWP | 2.764 | 60.98 | 54.81 | 58,965.00 | 57,188.00 | 3.107 |
| CO ASSESSOR | 1.774 | 39.14 | 39.35 | 513,899.00 | 557,789.00 | 7.868- |
| CO EXTENSION | .511 | 11.28 | 9.89 | 436,719.00 | 422,558.00 | 3.351 |
| STATE | .013 | .28 | .25 | 10,754.00 | 11,735.00 | 8.359- |

Online Payment Available at: www.iowatreasurers.org**TOTALS:** \$2,206.00 \$1,974.00**WOODBURY COUNTY TREASURER****MICHAEL R CLAYTON**620 DOUGLAS ST ROOM 102
SIOUX CITY IA 51101 PHONE (712) 279-6495
taxdept@sioux-city.org

Receipt#

14/15 10-10789

DUE SEPT 1, 2014

\$1,103.00

DUE MARCH 1, 2015

\$1,103.00

Date Paid: _____

Date Paid: _____

CHECK# _____

CHECK# _____

SIOUXLAND
DISTRICT HEALTH
DEPARTMENT

September 17, 2014

To: Woodbury County Board of Supervisors

From: Kevin Grieme, Director
Siouxland District Health Department

RE: Partnership to Improve Community Health (PICH) Grant

This is an application for federal funds through the Center for Disease Control. With the 28E agreement that exists between Siouxland District Health Department and Woodbury County this funding required Board of Supervisor approval. This is a result of SDHD using the Woodbury County Federal Tax ID # as outlined in the agreement. When funds are received, the FTE's associated with the project will be those of Siouxland District Health Department. SDHD will be the responsible entity for the project work, grant reporting and fiscal reporting. Woodbury County will serve in the fiscal role and have the grant funds deposited then expended by SDHD, which is already occurring with other grant resources.

The following is a brief description of the proposed programming:

The Partnership to Improve Community Health (PICH) grant is a 3-year initiative funded through the Centers for Disease Control to improve health and reduce the burden of chronic diseases, such as heart disease, strokes, diabetes, and obesity. Siouxland District Health Department and the Live Healthy Siouxland Coalition will be focusing on a variety of policy, system, and environmental changes (PSE), to increase the number of people with access to healthy food and beverage options and physical activity opportunities in Woodbury County.

Anticipated funding for year one is \$120,458, while requested funding for year 2 and 3 is \$135,336 and \$136,863 respectively. Collaborators for this award with SDHD include, SIMPCO, University of Iowa, and June E. Nylén Cancer Center.

ADMINISTRATION
(712) 279-6119
FAX (712) 255-2601

ENVIRONMENTAL
(712) 279-6119
FAX (712) 255-2604

LABORATORY
(712) 279-6119
FAX (712) 255-2601

NURSING
(712) 279-6119
FAX (712) 255-2605

NUTRITION/WIC
(712) 279-6636
FAX (712) 255-2677

1014 Nebraska Street, Sioux City, Iowa 51105

Karen James - Board of Supervisors

From: Sharon Burton <Sharon@simpco.org>
To: Karen James <kjames@sioux-city.org>, "hsatterwhite@sioux-city.org" <hs...>
Date: 9/16/2014 12:09 PM
Subject: Board of Supervisors
CC: Dwight Lang <Dwight@simpco.org>, "Gary Brown (wcdes@wiatel.net)" <wcd...>
Attachments: Hazard Mitigation Sample Resolution-Woodbury County.doc

Karen and Heather –

FEMA has approved the Woodbury County Multi-jurisdictional Local Hazard Mitigation Plan.

SIMPCO is requesting the Board of Supervisors adopt the Woodbury County Multi-jurisdictional Local Hazard Mitigation Plan by resolution on Tuesday, September 23, 2014.

Please find attached a sample resolution. SIMPCO Executive Director Dwight Lang and Woodbury County Emergency Manager Gary Brown will be attending the Board of Supervisors meeting.

We will have a copy of the plan to the Board of Supervisors office by Thursday, September 18, 2014.

If you have any questions or need additional information, please let me know.

Also, let me know you received this email and attachment.

Thanks,

Sharon Burton
Executive Assistant
Siouxland Interstate Metropolitan Planning Council (SIMPCO)
PO Box 1077
1122 Pierce Street
Sioux City, IA 51102-1077
Phone: (712) 279-6286
Fax: (712) 279-6920

County of Woodbury, Iowa
Board of Supervisors
620 Douglas Street, Sioux City, IA 51101

RESOLUTION

WHEREAS, the Woodbury County Multi-Jurisdictional Local Hazard Mitigation Plan has been prepared in accordance with FEMA requirements of 44 C. F. R. 201. 6; and,

WHEREAS, Woodbury County is a local unit of government that has afforded the citizens an opportunity to comment and provide input in the Plan and the actions in the Plan; and

WHEREAS, Woodbury County has reviewed the Plan and affirms that the Plan will be updated no less than every five years.

NOW THEREFORE, BE IT RESOLVED by the Board of Supervisors that Woodbury County adopts the Woodbury County Multi-Jurisdictional Local Hazard Mitigation Plan, and resolves to execute the actions in the Plan.

ADOPTED this 23rd day September, 2014 at the meeting of the Woodbury County Board of Supervisors.

Board of Supervisors Chair

RESOLUTION

NOTICE OF PROPERTY SALE

Parcel #570825

WHEREAS Woodbury County, Iowa was the owner under a tax deed of a certain parcel of real estate described as:

**The North 42.12' of the South 48.12' of Lot Five, (except fifteen feet off from the East side thereof for private alley) of Auditor's Sub-division of Lot One of the Auditor's Sub-division of the Southwest quarter of the Southeast quarter of Section 14, and Lot ten of Auditor's Sub-division of Section 23, Township 89, North, Range 48, West of the 5th P.M. in the County of Woodbury and State of Iowa
(2220 Riverside Blvd.)**

NOW THEREFORE,

BE IT RESOLVED by the Board of Supervisors of Woodbury County, Iowa as follows:

1. That a public hearing on the aforesaid proposal shall be held on the **7th Day of October, 2014 at 10:15 o'clock a.m.** in the meeting room of the Board of Supervisors on the first floor of the Woodbury County Courthouse.
2. That said Board proposes to sell the said parcel of real estate at a public auction to be held on the **7th Day of October, 2014**, immediately following the closing of the public hearing.
3. That said Board proposes to sell the said real estate to the highest bidder at or above a **total minimum bid of \$904.00** plus recording fees.
4. That this resolution, preceded by the caption "Notice of Property Sale" and except for this subparagraph 4 be published as notice of the aforesaid proposal, hearing and sale.

Dated this 23rd Day of September, 2014.

ATTEST:

WOODBURY COUNTY BOARD OF SUPERVISORS

Patrick F. Gill
Woodbury County Auditor
and Recorder

George W. Boykin, Chairman

REQUEST FOR MINIMUM BID

Name: May Olson Date: 3/11/14
Address: 218283 331st St. Jefferson, MO 64038 Phone: 281-0954

Address or approximate address/location of property interested in:

2220 Riverside Blvd.

GIS # 894823203004

**This portion to be completed by Board Administration **

Legal Description:

And Sub Div Pt Lot 1 SW SE And Sub Div 14-89-48
Lot 10 Sub Div 23-89-48 N 42.12 ft S 48.12 ft
Lot 5. LL-50 Comm 89-48 Addition, Sioux City,
Woodbury County, Iowa

Tax Sale #/Date: #1013 6/20/11 Parcel # 570825

Tax Deeded to Woodbury County on: ~~County and state anti-grab~~ 9/16/14

Current Assessed Value: Land \$7,800- Building 0 Total \$7,800-

Approximate Delinquent Real Estate Taxes: \$1,653-

Approximate Delinquent Special Assessment Taxes: \$20,177-

*Cost of Services: ~~1000~~ \$104

Inspection to: George Boykin Date: 3/11/14

Minimum Bid Set by Supervisor: \$800.00

Date and Time Set for Auction: _____

* Includes: Abstractors costs; Sheriff's costs; publishing costs; and mailing costs.

Date Created: 3/11/2014



Parcel ID 894823203004
Sec/Twp/Rng 23-89-48
Property Address 2220 RIVERSIDE BLVD
SIOUX CITY

Alternate ID 570825
Class R
Acreage n/a

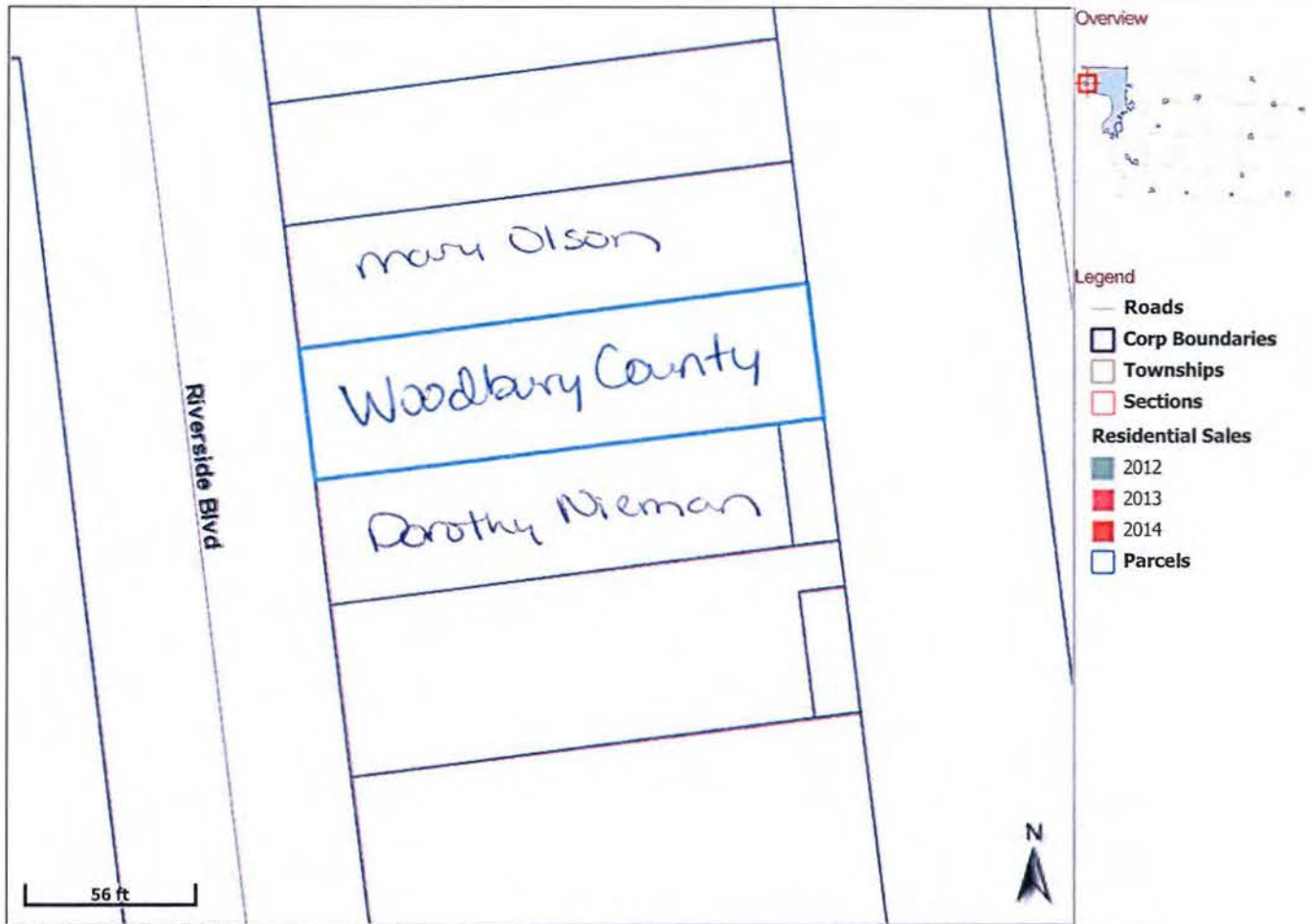
Owner Address GAYNOR SCOTT ALLAN
9745 BLUFF DR
BANNING, CA 92220

District 087 SC LL SIOUX CITY COMM
Brief Tax Description LL-SC COMM 89-48
AUD SUB DIV PT LOT 1
SW SE AUD SUB DIV 1
4-89-48 & LOT 10 SUB
DIV 23-89-48 N 42
.12 FT S 48.12 FT LO
T 5

(Note: Not to be used on legal documents)

Last Data Upload: 3/11/2014 2:57:50 AM

Date Created: 9/17/2014



| | | | | | |
|------------------------------|---|---------------------|--------|----------------------|--|
| Parcel ID | 894823203004 | Alternate ID | 570825 | Owner Address | GAYNOR SCOTT ALLAN 9745 BLUFF DR BANNING, CA 92220 |
| Sec/Twp/Rng | 23-89-48 | Class | R | | |
| Property Address | 2220 RIVERSIDE BLVD SIOUX CITY | Acreage | n/a | | |
| District | 087 SC LL SIOUX CITY COMM | | | | |
| Brief Tax Description | LL-SC COMM 89-48 AUD SUB DIV PT LOT 1 SW SE AUD SUB DIV 1 4-89-48 & LOT 10 SUB DIV 23-89-48 N 42 .12 FT S 48.12 FT LO T 5 | | | | |

(Note: Not to be used on legal documents)

Last Data Upload: 9/17/2014 6:29:49 AM

RESOLUTION

NOTICE OF PROPERTY SALE

Parcel #264990

WHEREAS Woodbury County, Iowa was the owner under a tax deed of a certain parcel of real estate described as:

**The East 56 ft. of Lot 9, Block 32, Hornicks 3rd Addition situated in the County of Woodbury in the State of Iowa
(2005 W. Palmer Ave.)**

NOW THEREFORE,

BE IT RESOLVED by the Board of Supervisors of Woodbury County, Iowa as follows:

1. That a public hearing on the aforesaid proposal shall be held on the **23rd Day of September, 2014 at 10:15 o'clock a.m.** in the meeting room of the Board of Supervisors on the first floor of the Woodbury County Courthouse.
2. That said Board proposes to sell the said parcel of real estate at a public auction to be held on the **23rd Day of September, 2014**, immediately following the closing of the public hearing.
3. That said Board proposes to sell the said real estate to the highest bidder at or above a **total minimum bid of \$598.00** plus recording fees.
4. That this resolution, preceded by the caption "Notice of Property Sale" and except for this subparagraph 4 be published as notice of the aforesaid proposal, hearing and sale.

Dated this 9th Day of September, 2014.

ATTEST:

WOODBURY COUNTY BOARD OF SUPERVISORS

Patrick F. Gill
Woodbury County Auditor
and Recorder

George W. Boykin, Chairman

REQUEST FOR MINIMUM BID

Name: Alex Zimmerman

Date: 1/29/13

Address: 1519 Isabella St.

Phone: 712-898-8460

Address or approximate address/location of property interested in:

2005 W. Palmer Ave.

GIS # 894730238013

**This portion to be completed by Board Administration **

Legal Description:

The East 56 ft. of Lot 9, Block 32, Hornicks
3rd Addition situated in the County of
Woodbury in the State of Iowa

Tax Sale #/Date: #2002-01298 12/17/02

Parcel # 264990

Tax Deeded to Woodbury County on: N/A yet

Current Assessed Value: Land \$1,800- Building 0 Total \$4,800-

Approximate Delinquent Real Estate Taxes: \$2,372-

Approximate Delinquent Special Assessment Taxes: \$12,597-

*Cost of Services: ~~0~~ \$98

Inspection to: Larry Clausen

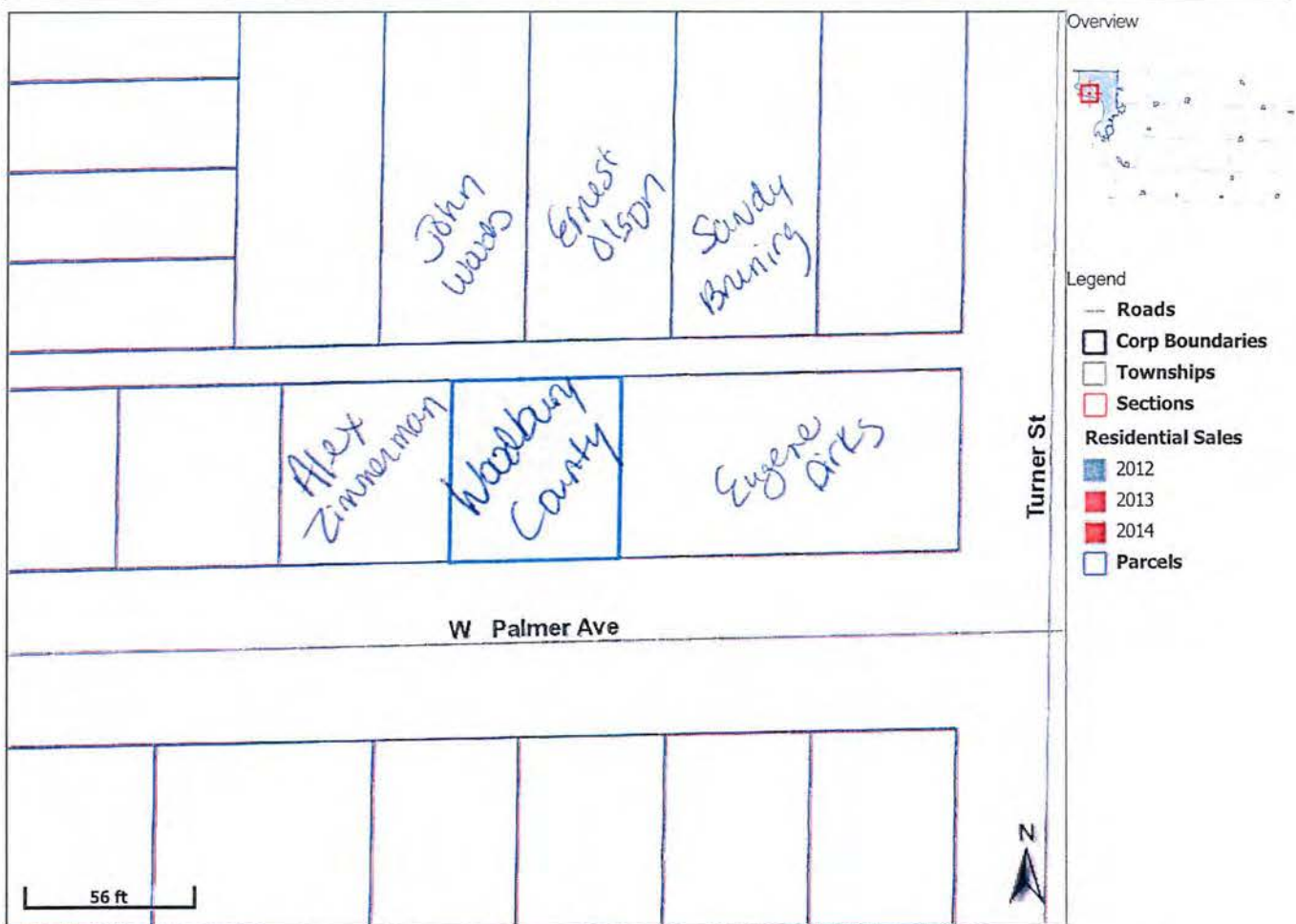
Date: ~~1/29/13~~ 1/29/13

Minimum Bid Set by Supervisor: \$500

Date and Time Set for Auction: _____

* Includes: Abstractors costs; Sheriff's costs; publishing costs; and mailing costs.

Date Created: 9/3/2014



Parcel ID 894730238013
Sec/Twp/Rng 0-0-0
Property Address 2005 W PALMER AVE
 SIOUX CITY

Alternate ID 264990
Class R
Acreage n/a

Owner Address WOODBURY COUNTY
 WOODBURY COUNTY COURTHOUSE
 620 DOUGLAS ST
 SIOUX CITY, IA 51101-0000

District 087 SC LL SIOUX CITY COMM
Brief Tax Description HORNICKS 3RD
 E 56 FT LOT 9 BLK 32

(Note: Not to be used on legal documents)

Last Data Upload: 9/3/2014 1:10:51 AM



developed by
 The Schneider Corporation
www.schneidercorp.com



Woodbury County Secondary Roads Department

759 E. Frontage Road • Merville, Iowa 51039

Telephone (712) 279-6484 • (712) 873-3215 • Fax (712) 873-3235

COUNTY ENGINEER
Mark J. Nahra, P.E.
mnahra@sioux-city.org

ASSISTANT TO THE COUNTY ENGINEER
Benjamin T. Kusler, E.I.T.
bkusler@sioux-city.org

SECRETARY
Tish Brice
tbrice@sioux-city.org

To: Board Members

From: Mark Nahra, County Engineer

Date: August 22, 2014

RE: Weekly Work Report

Construction Project Report:

L-B(K199)—73-97, Michigan Avenue Bridge Replacement: Letting date: April 29, 2014. Contract price: \$510,724.50. Contractor: Christensen Brothers, Inc. Late start date: July 15, 2014. The project is funded by local secondary road fund dollars. The contractor has completed substructure work on the south abutment, south pier, and north pier. The south and middle precast bridge sections were set this week. Pile driving is underway for the north abutment. The new bridge will be a 150' x 26' Precast Concrete Deck bridge. Completion is expected by late September, 2014.

STP-S-CO97(121)—5E-97, PCC Inlay Project on County Road D51 from Port Neal Road to the Interstate 29 interchange. Letting date: February 18, 2014. Contract price: \$1,261,371.36. Contractor: C. J. Moyna & Sons, Inc. The project will consist of removal of the existing pavement, crushing the old pavement and placing it as road base, then placing a new 10" PCC pavement on the road grade. The county project is funded with MPO federal aid funds matched by the RISE funds awarded for the CF Industries project. The Iowa DOT is providing construction management and inspection to coordinate our pavement replacement project with the interchange work.

The two south ramps closed the week of June 30, 2014. Work on the county road and closure of the north ramps started on September 3, 2014. Local traffic for the cattle yard and Port Neal Welding is being accommodated over the old overpass structure and on the road shoulders. Crushing of the old pavement and laying it on the roadway as base was completed last week. Mainline paving of the county road is being done this week. Paving should be completed by Thursday night.

Iowa DOT is estimating that the overpass and road will not reopen until late November. All work at the interchange, including the removal of the old overpass bridge, is scheduled to be completed in mid-December 2014.

BRS-0867(601)—60-97, Bronson Bridge and Box Culvert Replacement on County Road D38 near the intersection of 210th Street and the Bronson Blacktop on the corporation line road with Bronson. Letting date: June 17, 2014. Late Start Date: July 21, 2014. Contractor: Dixon Construction, Inc. Bid price: \$1,299,064.30. Working Days: 75 days. The project is funded with federal aid bridge funds matched with county farm to market fund money. The project includes replacement of the existing bridge with a new 150' x 30' Continuous Concrete Slab bridge, replacement of the small bridge at the intersection of D38 and K42 with a new box culvert, and new PCC Concrete paving from approximately 100' SE of the bridge to the intersection of D38 and K42.

The contractor has completed work on the north pier. The contractor is driving sheet piling for the south pier cofferdam today and should be driving piling next week.

STP-S-CO97(110)—5E-97, HMA Overlay Project on County Road K45, Old Highway 75 from the south city limits of Sergeant Bluff to the intersection of K45 and D51 (Luton Pavement). Letting date: February 18, 2014. Contract price: \$764,253.46. Contractor: Knife River Construction. The project consists of placing a 2" HMA overlay on the existing HMA pavement. The project is funded with MPO federal aid funds matched by the county farm to market fund. Late start date for the project is September 8, 2014.

The contractor plans to start work on September 15 with pavement patching. The week of September 22 is scheduled for pavement milling in preparation for overlay of the pavement which is planned for the week of September 29. The contractor plans to complete the project within allotted working days and should be finished by October 6.

RCX-CO97(119)—9B-97, CF Industries Plant Road-grading for paving of the plant access road. Letting date: April 29, 2014. Late start date: June 2, 2014. Contract price: \$525,413.80. Contractor: Lieber Construction, Inc. Work started Monday, June 2nd. Work on the grade is now complete and the contractor has temporarily suspended work awaiting installation of the new water main that will serve the CF Industries north plant. The major work remaining consists of placement of rock base and surfacing on the finished grade and seeding the road embankment and ditches. The project is funded with RISE funds awarded for the CF Industries project and will be matched by local funds.

L-B(L136)—73-97, Pocahontas Avenue Bridge Replacement Letting date: June 10, 2014. Contractor: Dixon Construction, Inc. Bid price: \$497,757.65. Late start date: September 1, 2014. This bridge project is funded with the new Capital Projects Levy. The new bridge will be a 90' x 30' Continuous Concrete Slab Bridge. Contracts were approved by the Board July 15. The contractor has not yet scheduled a preconstruction meeting for the project.

L-B(H109)—73-97, 185th Street Bridge Replacement: Letting date: June 10, 2014. Contractor: Dixon Construction, Inc. Bid price: \$508,087.40. Late start date: September 1, 2014. This bridge project is funded with the new Capital Projects Levy. The new bridge will be a 100' x 30' Continuous Concrete Slab Bridge. Contracts were approved by the Board July 15. The contractor has not yet scheduled a preconstruction meeting for the project.

240th Street Extension- Andrew Avenue improvement: Design work is complete and plans have been approved for the 240th Street/Andrew Avenue improvement project. Design was done in house by county staff. V&K Consultants of Sergeant Bluff have completed platting required right of way. JCG Land Services of Nevada, Iowa have completed appraisals for needed property and have contacted landowners to begin negotiations for the purchase of right of way. Right now we are projecting a contract letting either October 7 or October 14.

Road Slide Repairs: Spring storms heavily damaged county paved roads. Many of these roads are federal aid highways and are not eligible for FEMA money to help fund repairs. These roads are eligible for Federal Highway Emergency Repair funds however. Our staff members had to survey and prepare plans for each damage location. We prepared project reports and estimates for the damage at each site. My estimates totaled just over \$600,000.

These reports and estimates have been reviewed by FHWA. An engineer from the Iowa Division of the Federal Highway Administration reviewed the damage to county federal aid highways last Friday. We are now awaiting approval of our project estimates by FHWA and award of funds. I have requested authorization to let the projects locally to shorten the time necessary to let the projects to contract.

We are separating project repairs into two groups. One group includes projects requiring no work outside the county right of way. These will be let to contract first. The projects that require additional right of way or temporary easements to allow repair will also require cultural and environmental review and approval by FHWA before we can let them to contract. We are pressing to move these projects along as quickly as possible, but I felt it would be better to get as many projects as we can let to contract and underway. Repair work, as a result, will appear to be hit and miss as the initial contractor will bypass some damaged areas that require environmental approval by FHWA and IDOT, but this will help get repairs underway sooner.

Port Neal Interchange Haul Road: The Iowa DOT approved the use of 210th Street, Old Lakeport Road, Old Highway 75 and 260th Street as a temporary primary haul road for hauling fill material for the ramps and road embankments to the I-29 interchange project. Fill material is being removed from the Alexson property behind 1483 210th Street. This haul road use is likely to be occurring through much of this summer as work continues on the interchange. During Old Highway 75 resurfacing, haul road traffic may be detoured to First Street in Sgt. Bluff until the overlay project is completed.

Four Lane Hwy 20 Construction work on U.S. 20 from east of Merville to Woodbury County Road L-25 has started. The \$11.9 million grading and structures contract was awarded to C.J. Moyna and Sons Inc. of Elkader. The grading project is anticipated to be completed in late 2015 and the completion of the four-lane roadway through Correctionville is scheduled for completion in late 2018. Motorists should pay special attention to the signs directing traffic through the construction zone.

WOODBURY COUNTY JAIL WEEKLY POPULATION REPORT

| <u>DATE</u> | <u>Day</u> | <u>DAILY TOTAL</u> | <u>LEC</u> | <u>ELECTRONIC MONITORING</u> | <u>PRAIRIE HILLS</u> | <u>FEDERAL PRISONERS</u> |
|-------------|------------|------------------------|-------------|----------------------------------|--------------------------|------------------------------|
| 9/13/14 | Saturday | 202 | 179 | 13 | 10 | 2 |
| 9/14/14 | Sunday | 200 | 177 | 13 | 10 | 2 |
| 9/15/14 | Monday | 209 | 186 | 13 | 10 | 2 |
| 9/16/14 | Tuesday | 187 | 161 | 14 | 12 | 2 |
| 9/17/14 | Wednesday | 193 | 167 | 14 | 12 | 2 |
| 9/18/14 | Thursday | 218 | 193 | 13 | 12 | 2 |
| 9/19/14 | Friday | 216 | 191 | 13 | 12 | 2 |
| | | 1425 | 1254 | 93 | 78 | 14 |

WOODBURY COUNTY JUVENILE DETENTION CENTER

Trosper Hoyt Bldg.
822 Douglas St. - 4th Floor
Sioux City, Iowa 51101

Phone 712-279-6522
Email: molson@sioux-city.org
Fax 712-234-2900

6:00 a.m.

6:00 p.m.

September

| | | |
|--------------------|----|----|
| September 8, 2014 | | 10 |
| September 9, 2014 | 14 | 14 |
| September 10, 2014 | 14 | 12 |
| September 11, 2014 | 12 | 12 |
| September 12, 2014 | 15 | 15 |
| September 13, 2014 | 15 | 15 |
| September 14, 2014 | 15 | 15 |
| September 15, 2014 | 15 | |

The Center averaged 14.3 residents per day during the 6:00 a.m. head count and 13.3 during the 6:00 p.m. check for a weekly average of 13.8 residents per day during the 6:00 a.m. head count.

As of 6:00 on September 15, 2014, seven out of fifteen residents detained were identified gang members or forty seven percent.

We are currently detaining eight juveniles from the BIA and one from Dakota County.

Mark Olsen

Director
WCJDC

September 15, 2014