



NOTICE OF MEETING OF THE WOODBURY COUNTY BOARD OF SUPERVISORS
(NOVEMBER 3, 2015) (WEEK 45 OF 2015)

Agenda and Minutes also available at
www.woodburycountyiowa.gov

Larry D. Clausen 389-5329 lclausen@woodburycountyiowa.gov
Mark A. Monson 204-1015 mark@mudflap.com
Jaclyn D. Smith 898-0477 jasmith@woodburycountyiowa.gov
Jeremy J. Taylor 259-7910 jtaylor@woodburycountyiowa.gov
Matthew A. Ung 490-7852 matthewung@woodburycountyiowa.gov

You are hereby notified a meeting of the Woodbury County Board of Supervisors will be held November 3, 2015 at 4:30 p.m. in the Basement of the Courthouse, 620 Douglas Street, Sioux City, Iowa for the purpose of taking official action on the agenda items shown hereinafter and for such other business that may properly come before the Board.

This is a formal meeting during which the Board may take official action on various items of business. If you wish to speak on an item, please follow the seven participation guidelines adopted by the Board for speakers.

- 1. Anyone may address the Board on any agenda item after initial discussion by the Board.
- 2. Speakers will approach the microphone one at a time and be recognized by the Chair.
- 3. Speakers will give their name, spell their name, and give their address and then their statement.
- 4. Everyone will have an opportunity to speak. Therefore, please limit your remarks to **three minutes on any one item.**
- 5. At the beginning of the discussion on any item, the Chair may request statements in favor of an action be heard first followed by statements in opposition to the action.
- 6. Any concerns or questions you may have which do not relate directly to a scheduled item on the agenda will also be heard under the final agenda item "Citizen Concerns."
- 7. For the benefit of all in attendance, please turn off all cell phones and other devices while in the Board Chambers.

AGENDA

- 4:00 p.m. 1. Closed Session General Relief Appeal Hearing for T. S. Iowa Code Section {21.5 (1) (a)} **First Floor Board of Supervisors Meeting Room**
- 4:15 p.m. 2. Closed Session General Relief Appeal Hearing for L. K. Iowa Code Section {21.5 (1) (a)} **First Floor Board of Supervisors Meeting Room**
- 4:30 p.m. 3. Call Meeting to Order – Pledge of Allegiance to the Flag – Moment of Silence
- 4. Citizen Concern Information
- 5. Approval of the agenda November 3, 2015 Action
- 6. Approval of the minutes of the October 27, 2015 meeting Action
- 7. Discussion and approval of claims
- 8. Human Resources – Ed Gilliland
 - a. Approval of Memorandum of Personnel Transactions Action
 - b. Authorize Chairman to sign Authorization to Initiate Hiring Process Action
 - c. Presentation of Award Certificate to Drew Bockenstedt Information
- 9. Receive County Recorder's report of fees collected Action

- 4:35 p.m. (Set Time)**
10. Board Administration – Karen James
Public Hearing and Sale of Property Parcel #178905 (2810 W. 14th Street) Action
 11. Conservation – Rick Schneider
Presentation of FY15 Conservation Department Annual Report Information
 12. Planning & Zoning – John Pylelo
Resolution Accepting and Approving the Final Platting for ZM Addition (a Minor Subdivision) and Authorizing Chairman's signature - GIS Parcel #884729127001 Action
 13. Building Services – Kenny Schmitz
Woodbury County – First in Iowa to incorporate LED lighting in all County buildings. Supplier bids Action
 14. Secondary Roads – Mark Nahra
 - a. Consideration of approval of the contract for Project PCC Patching 2015 Action
 - b. Consideration of permit for installation of underground water line within the Highway Right of Way for Northwest Environmental Services on Deer Run Trail Action
 - c. Consider resolution to establish a stop sign at the intersection of CF Industries Drive and 255th Street Action
 - d. Consider resolution to establish a speed limit on CF Industries Drive Action
 - e. Preliminary review of County Policy for construction and reconstruction of roadways and bridges on the Woodbury County Road System Information
 - f. Preliminary review of a new county ordinance limiting the use of engine brakes in rural Woodbury County Information
 15. Consideration of award of quotation for one ½ ton pickup truck for the County Weed Commissioner Action
 16. Board of Supervisor – Jeremy Taylor
 - a. Approval of closing of Prairie Hills and LEC expansion Action
 - b. Approval of resolution honoring Pastor Edgar Rodriguez Action
 17. Reports on committee meetings Information
 18. Citizen's Concerns Information
 19. Board Concerns and Comments Information

ADJOURNMENT

Subject to Additions/Deletions

CALENDAR OF EVENTS

MONDAY, NOVEMBER 2	5:00 p.m.	Conservation Board Meeting, Dorothy Pecaut Nature Center, Stone Park
	6:00 p.m.	Board of Adjustment meeting, Board of Supervisors' Chambers
TUESDAY, NOVEMBER 3	4:45 p.m.	Veteran Affairs Meeting, Veteran Affairs Office, 1211 Tri-View Ave.
WEDNESDAY, NOVEMBER 4	12:00 noon	District Board of Health Meeting, 1014 Nebraska St.
THURSDAY, NOVEMBER 5	5:00 p.m.	Conservation Board Meeting, Dorothy Pecaut Nature Center Stone Park
WEDNESDAY, NOVEMBER 11	8:05 a.m.	Woodbury County Information Communication Commission, Board of Supervisors' Chambers
	8:00 p.m.	County's Mayor Association Meeting, Public Safety Center, Climbing Hill
THURSDAY, NOVEMBER 12	7:00 p.m.	Siouxland Mental Health Center, Board Meeting, 625 Court Street
	12:00 p.m.	SIMPCO Board of Directors, 1122 Pierce St, Sioux City, Iowa
TUESDAY, NOVEMBER 17	4:30 p.m.	Community Action Agency of Siouxland Board Meeting, 2700 Leech Avenue
WEDNESDAY, NOVEMBER 18	10:00 a.m.	Senior Center Board of Directors Meeting, 313 Cook Street
	12:00 noon	Siouxland Economic Development Corporation Meeting, 617 Pierce St., Ste. 202, Sioux City, Iowa
THURSDAY, NOVEMBER 19	11:00 a.m.	Siouxland Regional Transit Systems (SRTS) Board Meeting, SIMPCO Office, 1122 Pierce St., Sioux City, Iowa
	7:30 p.m.	911 Service Board Meeting, Public Safety Center, Climbing Hill
MONDAY, NOVEMBER 23	6:00 p.m.	Zoning Commission Meeting, Board of Supervisors' Chambers
	7:30 p.m.	Fair Board Meeting, Woodbury County Fair Office, Fairgrounds, Merville, Iowa.
TUESDAY, NOVEMBER 24	2:00 p.m.	Decat Board Meeting, Western Hills AEA, Room F
	1:30 p.m.	Sioux Rivers Regional Governance Board Meeting, Plymouth County Courthouse Annex Building, 215 4th Ave. S.E., Le Mars, Iowa

Woodbury County is an Equal Opportunity Employer. In compliance with the Americans with Disabilities Act, the County will consider reasonable accommodations for qualified individuals with disabilities and encourages prospective employees and incumbents to discuss potential accommodations with the Employer.

Federal and state laws prohibit employment and/or public accommodation discrimination on the basis of age, color, creed, disability, gender identity, national origin, pregnancy, race, religion, sex, sexual orientation or veteran's status. If you believe you have been discriminated against, please contact the Iowa Civil Rights Commission at 800-457-4416 or Iowa Department of Transportation's civil rights coordinator. If you need accommodations because of a disability to access the Iowa Department of Transportation's services, contact the agency's affirmative action officer at 800-262-0003.

A G E N D A

Woodbury County Board of Supervisors

SPECIAL MEETING

DATE: Thursday, November 5, 2015

TIME: 3:00 p.m.

WHERE: First Floor Board of Supervisors Meeting Room

3:00 p.m. Canvassing of City of Bronson Election

ADJOURNMENT

Subject to Additions/Deletions



OCTOBER 27, 2015 — FORTYFORTH MEETING OF THE WOODBURY COUNTY BOARD OF SUPERVISORS

The Board of Supervisors met on Tuesday, October 27, 2015 at 4:00 p.m. Board members present were Ung, Taylor and Smith. Staff members present were Karen James, Board Administrative Coordinator, Finance/Operations Controller, Ed Gilliland, Human Resources Director, Gloria Mollet, Assistant Human Resources Director and Patrick Gill, Auditor/Clerk to the Board.

1. The meeting was called to order – Pledge of Allegiance to the Flag – Moment of Silence.
2. Kenny Schmitz, Building Services Director, reported on a bid opening for an LED lighting project that occurred prior to this meeting. Rhonda Roberts addressed the Board on a planning and zoning issue concerning work being done on Gernhart property.
3. Motion by Smith second by Taylor to approve the Agenda for October 27, 2015 with consideration of the Property Tax Relief Resolution after consideration of the Envision 2050 CIP projects and TIF use policy. Carried 5-0. Copy filed.
4. Motion by Taylor second by Clausen to approve the minutes of the October 20, 2015 Board meeting. Carried 5-0. Copy filed.
5. Motion by Ung second by Clausen to approve the claims totaling \$933,869.48. Carried 5-0. Copy filed.
- 6a. Motion by Ung second by Taylor to approve the reclassification of Rachael Edmundson, Asst. County Attorney, County Attorney Dept., effective 11-9-15, \$73,751/year, 8%=\$5,454/year. Per AFSCME Asst. County Attorney Contract agreement, from Step 6 to Step 7. Carried 5-0. Copy filed.
- 6b. Motion by Clausen second by Smith to approve the Floating Christmas Holiday as December 24, 2015. Carried 5-0. Copy filed.
- 6c. Motion by Clausen second by Smith to approve the settlement agreement with Jennifer Fuentes. Carried 5-0. Copy filed.
- 7a. Motion by Taylor second by Smith to approve a permit to work in the Highway Right of Way for Douglas Washburn. Carried 5-0. Copy filed.
- 7b. Motion by Ung second by Clausen to approve the permit for work in Highway Right of Way to place underground utilities for MidAmerican Energy. Carried 5-0. Copy filed.
- 7c. Motion by Clausen second by Clausen to approve the permit for work in Highway Right of Way to place underground and overhead utilities for MidAmerican Energy. Carried 5-0. Copy filed.
- 7d. Bid letting for Weed Commissioner Truck. The bids are as follows:

Jensen Dealerships, Sioux City, IA	\$23,318.00
Knoepfler Chevrolet, Sioux City, IA	\$24,440.00
Barry Motor, Danbury, IA	\$25,647.00
- Motion by Taylor second by Clausen to receive the bids for Weed Commissioner Truck and to direct the County Engineer to evaluate the bids and return with a recommendation for award. Carried 5-0. Copy filed.
8. Motion by Clausen second by Taylor to approve and authorize the Chairperson to sign a letter of discontinuation of Woodbury County Targeted Case Management Program and Chapter 24 Accreditation. Carried 5-0. Copy filed.
- 9a. Motion by Taylor second by Ung to endorse the Siouxland District Board of Health to retain the funding amount over 25% reserve funding in order to move forward with their building CIP project. Carried 4-1 on a roll call vote; Clausen opposed. Copy filed.

- 9c. Taylor presented information from a Committee meeting discussing Rural Economic Development. Copy filed.
- 10. The Board held a discussion on Envision 2050 CIP projects and TIF use policy and was asked to consider placing an item on the agenda for a retreat to discuss the issue. Copy filed.
- 9b. Motion by Taylor second by Ung to approve and authorize the Chairperson to sign a Resolution for Woodbury County's Taxpayers First Resolution. Carried 3-2 on a roll call vote; Clausen and Smith opposed.

RESOLUTION #12,286
WOODBURY COUNTY'S TAXPAYERS FIRST RESOLUTION

Whereas CF Industries is the state of Iowa's largest capital investment to date of over \$2 billion and has acted as an invaluable partner for the growth of the County;

Whereas tax rates are high relative to surrounding Iowa counties and to Nebraska and South Dakota for reasons outside of the County's control and this has a direct impact on competitiveness, further economic development, and where people choose to live and do business;

Whereas at the time of the 2050 Vision plan formulation, McClure Engineering listed Woodbury County's tax rates as the second highest among Iowa counties within 100 miles;

Whereas as the cost of living increases, taxpayers deserve to know their county government will live within its means so that while receiving county revenue of approximately \$56 million generated by CF Industries, meaningful property tax relief will be generated for families;

Whereas revenue from CF Industries is not generated until FY 2019 and the County already has four dedicated projects in the area using tax increment financing (CF Industries Entrance Rd; CF Industries On Site Road; AGP Road Port Neal Circle; and Dogwood Trail in Sergeant Bluff);

And whereas understanding this resolution cannot legally bind a future board, the current Board embraces this resolution as guiding policy and asks the electorate to hold public officials accountable for exercising the restraint that comes with limited government;

Now therefore be it resolved that the Board of Supervisors sets a guideline that in FY 2020 and beyond, 50% of all CF Industries revenue be dedicated to property tax relief and a statement be delivered annually to property taxpayers explaining publicly whether such money was dedicated to lowering the levy rate, offsetting mandated costs without increasing the levy, or dedicated to reserves.

WOODBURY COUNTY BOARD OF SUPERVISORS
Copy filed.

- 11. There were reports made on committee meetings.
- 12. There were no citizen concerns.
- 13. Board concerns and comments.

The Board adjourned the regular meeting until November 3, 2015.

Meeting sign in sheet. Copy filed.

#8a

WOODBURY COUNTY BOARD OF SUPERVISORS AGENDA ITEM(S) RE

Date: 10-29-15

Weekly Agenda Date: 11-03-15

DEPARTMENT HEAD / CITIZEN: Ed Gilliland

SUBJECT: Memorandum of Personnel Transactions

ACTION REQUIRED:

Approve Ordinance

Approve Resolution

Approve Motion

Give Direction

Other: Informational

Attachments

WORDING FOR AGENDA ITEM: Approval of Memorandum of Personnel Transactions

EXECUTIVE SUMMARY:

BACKGROUND:

FINANCIAL IMPACT:

RECOMMENDATION:

ACTION REQUIRED/PROPOSED MOTION: Motion to Approve the Memorandum of Personnel Transactions

HUMAN RESOURCES DEPARTMENT

MEMORANDUM OF PERSONNEL TRANSACTIONS

DATE: November 3, 2015

*** PERSONNEL ACTION CODE:**

- | | |
|----------------|---------------------|
| A- Appointment | R-Reclassification |
| T - Transfer | E- End of Probation |
| P - Promotion | S - Separation |
| D - Demotion | O - Other |

TO: WOODBURY COUNTY BOARD OF SUPERVISORS

NAME	DEPARTMENT	EFFECTIVE DATE	JOB TITLE	SALARY REQUESTED	% INCREASE	*	REMARKS
Andreessen, Brian	County Sheriff	10-26-15	Sheriff Reserve Officer			S	Resignation.
Barrett, Paul	County Sheriff	10-26-15	Sheriff Reserve Officer			S	Resignation.
Bauerly, Nicholas	County Sheriff	10-26-15	Sheriff Reserve Officer			S	Resignation.
Schauer, Luke	County Sheriff	10-26-15	Sheriff Reserve Officer			S	Resignation.
Timmer, Amanda	County Sheriff	10-26-15	Sheriff Reserve Officer			S	Resignation.
Gibbs, Michael	Building Services	11-04-15	Maintenance Technician	\$17.50/hour		A	Job Vacancy Posted 9-30-15. Entry Level Salary: \$16.77-\$18.17/hour.
Nelson, Stephanie	Juvenile Detention	11-15-15	Asst. Director			S	Resignation.

APPROVED BY BOARD DATE: _____

GLORIA MOLLET, ASST. HR DIRECTOR *Gloria Mollet*

WOODBURY COUNTY
HUMAN RESOURCES DEPARTMENT

TO: Board of Supervisors and the Taxpayers of Woodbury County

FROM: Ed Gilliland, Human Resources Director
Gloria Mollet, Human Resources Assistant Director
smollet

SUBJECT: Memorandum of Personnel Transactions

DATE: November 3, 2015

For the November 3, 2015 meeting of the Board of Supervisors and the Taxpayers of Woodbury County the Memorandum of Personnel Transactions will include:

- 1) County Sheriff (5) Sheriff Reserve Officers, Resignations.
- 2) Building Services Maintenance Technician, Appointment.
- 3) Juvenile Detention Assistant Director, Resignation.

Thank you



WOODBURY COUNTY BOARD OF SUPERVISORS AGENDA ITEM(S) REQUEST

Date: October 28, 2015

Weekly Agenda Date: November 10, 2015

DEPARTMENT HEAD / CITIZEN: Mark Olsen – Juvenile Detention

SUBJECT: One Assistant Director Replacement

ACTION REQUIRED:

Approve Ordinance Approve Resolution Approve Motion

Give Direction Other: Informational Attachments

WORDING FOR AGENDA ITEM: Discussion & Approval to hire one Assistant Director

EXECUTIVE SUMMARY: Replace the outgoing Assistant Director as of 10/29/15

BACK GROUND: The absence of one full-time line supervisor creates the inability to supervise twenty to twenty five shifts per month. Each supervisor is also responsible to be on-call two weeks per month as well as holidays and rotate shifts.

FINANCIAL IMPACT: The board has already approved the funding for this position. No additional cost required.

RECOMMENDATION: I recommend that board approve the replacement of the outgoing Assistant Director to allow for the appropriate and safe supervision of clients and staff.

ACTION REQUIRED: Board approval and Chairman Signature.

Approved by Board of Supervisors March 3, 2015.

HUMAN RESOURCES DEPARTMENT

WOODBURY COUNTY, IOWA

DATE: November 3, 2015

AUTHORIZATION TO INITIATE HIRING PROCESS

DEPARTMENT	POSITION	ENTRY LEVEL	APPROVED	DISAPPROVED
Juvenile Detention	Assistant Director	Wage Plan: \$53,484- \$57,260/year		
	*Please see attached memo.			

Chairman, Board of Supervisors



WOODBURY COUNTY BOARD OF SUPERVISORS AGENDA ITEM(S) RE

Date: 10-29-15

Weekly Agenda Date: 11-3-15

DEPARTMENT HEAD / CITIZEN: <u>Mark Monson, Chairman</u>		
SUBJECT: <u>Presentation of Award Certificate</u>		
ACTION REQUIRED:		
Approve Ordinance <input type="checkbox"/>	Approve Resolution <input type="checkbox"/>	Approve Motion <input type="checkbox"/>
Give Direction <input type="checkbox"/>	Other: Informational <input checked="" type="checkbox"/>	Attachments <input checked="" type="checkbox"/>

WORDING FOR AGENDA ITEM: Presentation of Award Certificate to Drew Bockenstedt.

EXECUTIVE SUMMARY:

BACKGROUND:

FINANCIAL IMPACT:

RECOMMENDATION:

ACTION REQUIRED/PROPOSED MOTION:

Approved by Board of Supervisors March 3, 2015.

Certificate of Award
Four (4) Hours of Paid Time Off

is awarded to

Drew Bockenstedt

for the generous donation of 7 Gallons to the
LifeServe Blood Center

(time off must be redeemed within six months from the date below)

Congratulations!

November 3, 2015



Mark Monson
Woodbury County Board of Supervisors,
Chairman

COUNTY RECORDER'S REPORT OF FEES COLLECTED
(See Chapter 342, Code)



State of IOWA) SS:
County of WOODBURY)

To the Board of Supervisors of WOODBURY County:

I, DIANE SWOBODA PETERSON, Real Estate/Recorder Deputy of the above named County and State, do hereby certify that the following is a true and correct statement of the fees collected by me in my office for the period of 7/01/2015 through 9/30/2015 and the same has been paid to the County Treasurer.


	Number of Documents	Fees Collected
R.E. Transfer Tax State-Monthly		41,157.20
County Share R.E. Transfer Tax		23,452.69
Auditor Transfer Fee	1,197	6,650.00
Records Management Fees	4,043	4,117.00
Lien	105	525.00
Deed	1,140	13,487.00
Mortgage	1,111	59,743.90
Contract	60	2,175.00
Release/Assignment	1,173	7,259.00
Miscellaneous	336	6,291.00
Claimants	62	481.80
Agreement	48	1,910.00
Elec Tran Fee to State Untransferred (Aug & Sept)		2,794.00
UCC 1 & Addendum	25	365.00
Copy Money-Quarterly		1,143.50
Vitals Stats State-Monthly		12,976.00
Vitals Stats County-Quarterly		9,575.00
Accts. Receivable Payment-Quarterly		3,467.00
Transfer to Checking Account		0
Previous Qtr. Acct. Receivable Balance		(4,079.00)
Bad Check Adjustment—Quarterly		(60.00)
Odd Size Documents	34	340.00
Overpayment Fee	48	197.30
Total		193,968.39

All of which is respectfully submitted.



DIANE SWOBODA PETERSON Real Estate/Recorder Deputy

Subscribed and sworn to before me by DIANE SWOBODA PETERSON, Woodbury County Real Estate/Recorder Deputy this 29th day of October, 2015.



PATRICK F. GILL County Auditor



RESOLUTION

NOTICE OF PROPERTY SALE

Parcel #178905

WHEREAS Woodbury County, Iowa was the owner under a tax deed of a certain parcel of real estate described as:

**Lot Four Garden View Addition, City of Sioux City and Woodbury County, Iowa
(2810 W. 14th Street)**

NOW THEREFORE,

BE IT RESOLVED by the Board of Supervisors of Woodbury County, Iowa as follows:

1. That a public hearing on the aforesaid proposal shall be held on the **3rd Day of November, 2015 at 4:35 o'clock p.m.** in the basement of the Woodbury County Courthouse.
2. That said Board proposes to sell the said parcel of real estate at a public auction to be held on the **3rd Day of November, 2015**, immediately following the closing of the public hearing.
3. That said Board proposes to sell the said real estate to the highest bidder at or above a **total minimum bid of \$130.00** plus recording fees.
4. That this resolution, preceded by the caption "Notice of Property Sale" and except for this subparagraph 4 be published as notice of the aforesaid proposal, hearing and sale.

Dated this 20th Day of October, 2015.

ATTEST:

WOODBURY COUNTY BOARD OF SUPERVISORS

Patrick F. Gill
Woodbury County Auditor
and Recorder

Mark A. Monson, Chairman

REQUEST FOR MINIMUM BID

Name: Ray Date: 3/19/14
Address: 2808 W. 14th St. Phone: 899-6917

Address or approximate address/location of property interested in:
2810 W. 14th St.

GIS# 894730102004

This portion to be completed by Board Administration

Legal Description:
Lot 4 Garden View Addition, City
of Sioux City and Woodbury County, Iowa

Tax Sale #/Date: # 1330 6/18/07 Parcel # 178905

Tax Deeded to Woodbury County on: 12/4/14

Current Assessed Value: Land \$7,100- Building Ø Total \$7,100-

Approximate Delinquent Real Estate Taxes: \$920-

Approximate Delinquent Special Assessment Taxes: -

*Cost of Services: \$ 125-

Inspection to: Mark Manson Date: _____

Minimum Bid Set by Supervisor: \$5 plus cost of services; total: \$130-

Date and Time Set for Auction: Tuesday, November 3rd @ 4:35 p.m.

* Includes: Abstractors costs; Sheriff's costs; publishing costs; and mailing costs.

Date Created: 3/19/2014



Overview



Legend

- Roads
- Corp Boundaries
- Townships
- Sections
- Residential Sales**
- 2011
- 2012
- 2013
- Parcels

Parcel ID 894730102004 **Alternate ID** 178905 **Owner Address** SOLBERG CHRISTOPHER
Sec/Twp/Rng 0-0-0 **Class** R PO BOX 98
Property Address 2810 W 14TH ST SIOUX CITY **Acreeage** n/a MAYER, MN 55360-0098

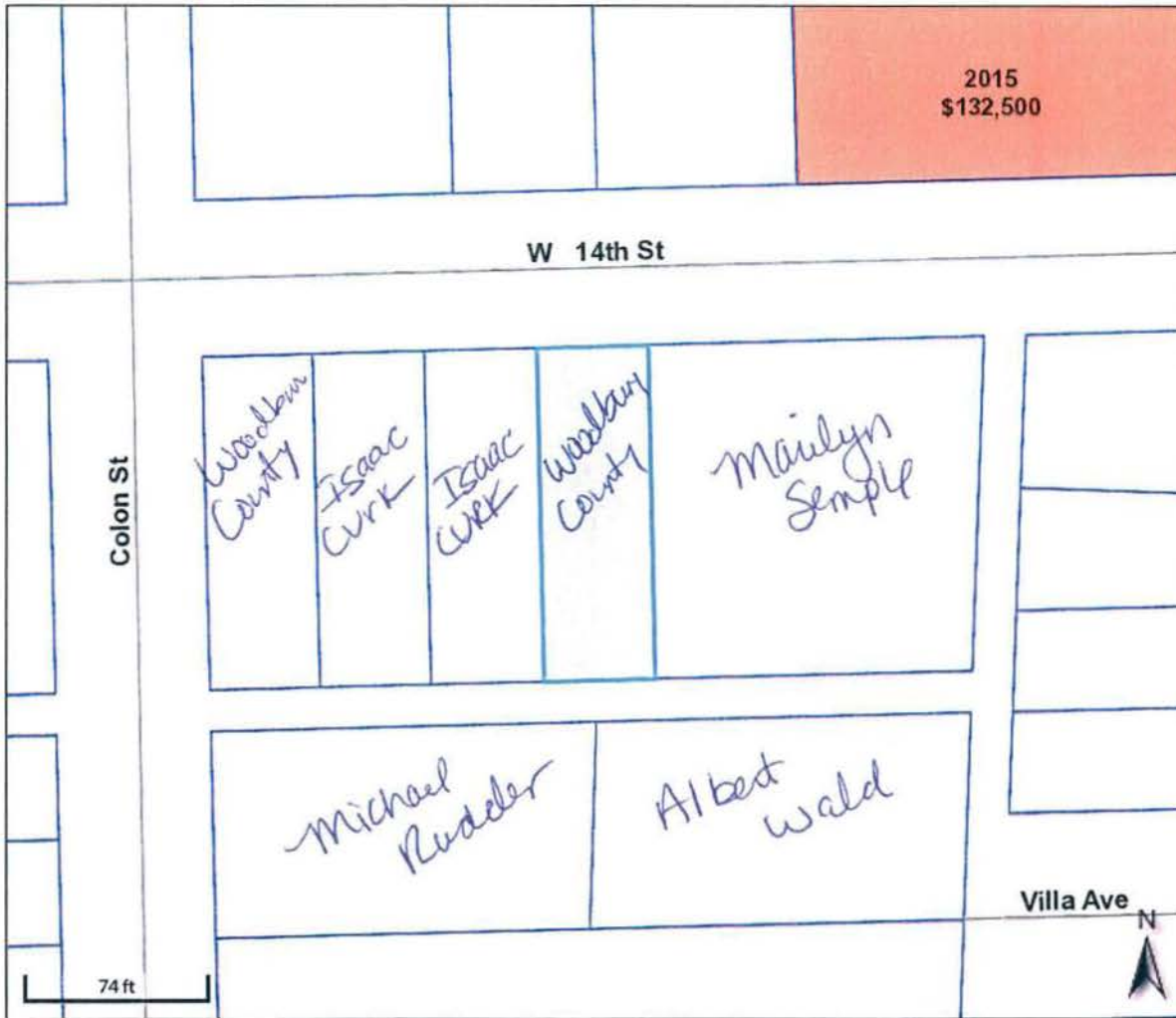
District 087 SC LL SIOUX CITY COMM
Brief Tax Description GARDEN VIEW
LOT 4

(Note: Not to be used on legal documents)

Last Data Upload: 3/19/2014 2:58:28 AM



Beacon™ Woodbury County, IA / Sioux City



Overview



Legend

- Roads
- Corp Boundaries
- Townships
- Sections
- Residential Sales**
- 2013
- 2014
- 2015
- Parcels

Parcel ID	894730102004	Alternate ID	178905	Owner Address	WOODBURY COUNTY
Sec/Twp/Rng	0-0-0	Class	R		WOODBURY COUNTY COURTHOUSE
Property Address	2810 W 14TH ST	Acreeage	n/a		620 DOUGLAS ST
	SIOUX CITY				SIOUX CITY, IA 51101-0000
District	087 SC LL SIOUX CITY COMM				
Brief Tax Description	GARDEN VIEW				
	LOT 4				
	<i>(Note: Not to be used on legal documents)</i>				

Date created: 10/14/2015
Last Data Upload: 10/13/2015 11:31:25 PM

Developed by
The Schneider Corporation

WOODBURY COUNTY BOARD OF SUPERVISORS AGENDA ITEM(S) R



Date: October 28, 2015

Weekly Agenda Date: November 3, 2015

ELECTED OFFICIAL / DEPARTMENT HEAD / CITIZEN: <u>Rick Schneider, Conservation Director</u>		
SUBJECT: <u>Presentation of FY 15 Conservation Department Annual Report</u>		
ACTION REQUIRED:		
Approve Ordinance <input type="checkbox"/>	Approve Resolution <input type="checkbox"/>	Approve Motion <input checked="" type="checkbox"/>
Give Direction <input type="checkbox"/>	Other: Informational <input type="checkbox"/>	Attachments <input type="checkbox"/>

WORDING FOR AGENDA ITEM: Presentation of FY 15 Conservation Department Annual Report

EXECUTIVE SUMMARY: Annual report of the Conservation Department is to be presented to the Board of Supervisors per Iowa Code Chapter 350.

BACKGROUND: The FY 15 Conservation Department Annual Report was approved by the Conservation Board at their October 1, 2015 meeting.

FINANCIAL IMPACT: None

RECOMMENDATION: Accept Conservation Department FY 15 Annual Report.

ACTION REQUIRED / PROPOSED MOTION: Move to receive the FY 15 Annual Report of the Woodbury County Conservation Board.

Approved by Board of Supervisors March 3, 2015.

WOODBURY COUNTY BOARD OF SUPERVISORS AGENDA ITEM(S)



Date: October 29, 2015

Weekly Agenda Date: November 3, 2015

DEPARTMENT HEAD / CITIZEN: John Pylelo, Director Office of Planning and Zoning

SUBJECT: Approval of Resolution of Final Plat Approval for ZM Addition.

ACTION REQUIRED:

- | | | |
|---|--|---|
| Approve Ordinance <input type="checkbox"/> | Approve Resolution <input checked="" type="checkbox"/> | Approve Motion <input type="checkbox"/> |
| Public Hearing <input type="checkbox"/> | Give Direction <input type="checkbox"/> | Other: Informational <input type="checkbox"/> |
| Attachments <input checked="" type="checkbox"/> | | |

WORDING FOR AGENDA ITEM: Resolution Accepting and Approving the Final Platting for ZM Addition (a Minor Subdivision) and Authorizing Chairman's signature - GIS Parcel #884729127001

EXECUTIVE SUMMARY: See Narrative Attached

BACKGROUND: See Narrative Attached

FINANCIAL IMPACT: None; covered by \$200.00 Application Fees

RECOMMENDATION: Zoning Commission- Plat Approval without Conditions
Staff - Plat Approval without Conditions

ACTION REQUIRED: Accept and Approve a Resolution for the Final Platting of ZM Addition (a Minor Subdivision) and Authorize Board Chairman's signature.

Note: The Board of Supervisor's Resolution language is located upon the final platting.

Approved by Board of Supervisors March 3, 2015.



OFFICE OF
Woodbury County Planning & Zoning Director

620 DOUGLAS ST., 6TH FLOOR - SIOUX CITY, IA 51101

John Pylelo - Planning & Zoning Director • jpylelo@sioux-city.org

Peggy Napier - Clerk II • pnapier@sioux-city.org

Telephone (712) 279-6557

Fax (712) 279-6530

To: Board of Supervisors

From: John Pylelo – Director Planning and Zoning

Re: Supervisor Meeting of Tuesday, October 29, 2015

Date: November 3, 2015

Resolution Accepting and Approving the Final Platting for ZM Addition (a Minor Subdivision) and Authorizing the Chairman's Signature; GIS Parcel #884729127001.

Background

The Marilyn B. Zyzda Revocable Living Trust has filed a subdivision application and final platting proposing to subdivide 13.814 acres into two (2) lots. Marilyn B. Zyzda currently resides on the parent parcel within an existing single family dwelling addressed 5710 Old Lakeport Rd. The applicant wishes to subdivide the parcel into two lots in order the existing dwelling is located upon an independent lot. The Zyzda family desires the future ability to construct another dwelling upon the proposed second lot.

The parent parcel lies within rural Woodbury County adjacent to the City of Sioux City's eastern corporate boundary. The closest intersection is at the parent parcel's western boundary and is Old Lakeport and South Ridge Roads. Location mapping can be found on the enclosed final platting.

The parent parcel is zoned AE (Agricultural Estates); is not located within a special flood hazard area; and does not lie within any drainage district. The parcel is serviced by a drive addressed 5710 Old Lakeport Road. The current and proposed use of the parent parcel and its structures are classified as legal conforming uses within the AE zoning district designation and Woodbury County zoning ordinances. CSR ratings for the area are appropriate and support final plat approval.

Zoning Commission Recommendation:

On October 26, 2015 the Zoning Commission held the required public hearing voting to recommend final platting approval without plat changes or conditions.

Office of Planning and Zoning Staff Recommendation:

The staff recommendation supports the Zoning Commission's plat approval recommendation.

Sioux City Extraterritorial Review:

The city of Sioux City's Zoning Commission has recommended plat approval. It is expected the Sioux City Council will consider final plat approval on November 9, 2015.

Packet Materials Provided:

Included find the following for your review:

- Location and Parcel Information
- Final Platting
- Aerial Photography
- Onsite Photographs

Your Board is asked to Accept and Approve a Resolution for the Final Platting of ZM Addition (a Minor Subdivision) and Authorize Board Chairman's signature. Note: The Board of Supervisor's Resolution language is located upon the final platting.

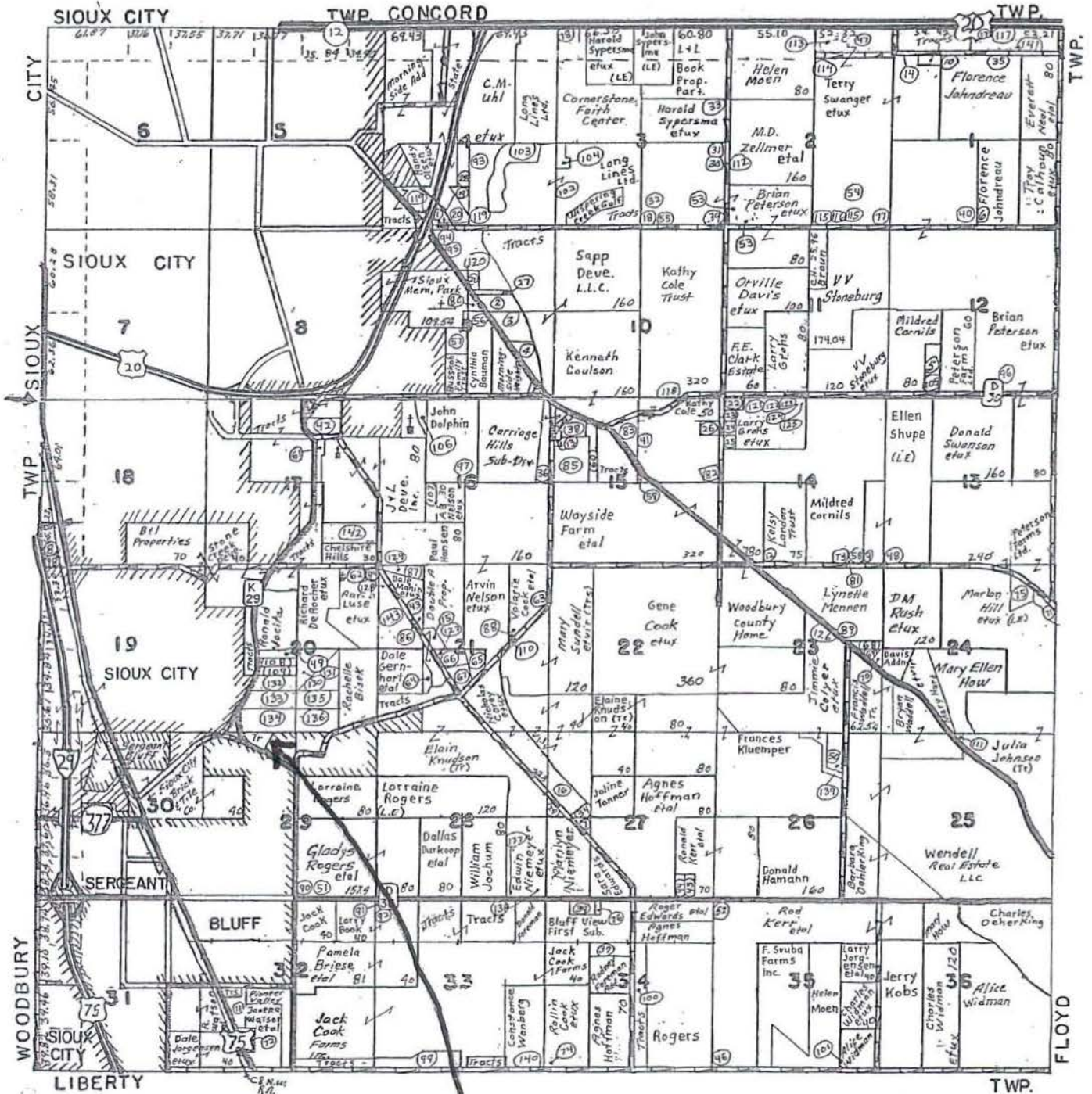
WOODBURY SIoux CITY

(E.Pt)

(S.E.Pt)

T-88N R-47W OF THE 5TH P.M.

ZM Addition
5710 Old Lakeport Rd.
GIS Parcel #884729127001
Portion of NE NW Section 29
Woodbury Township
Zoned AE (Ag. Estates)



SITE

BeaconTM Woodbury County, IA / Sioux City

Summary

Parcel ID	884729127001
Alternate ID	00000000642570
Property Address	5710 Old Lakeport Rd Woodbury
Sec/Twp/Rng	29-88-47
Brief Legal Description	WOODBURY TOWNSHIP EX TCT 220 FT X 300. 05 FT AND EX A TCT 1 41.08 FT X 183.37 FT NE NW OF IRREG 16 .5 AC TCT NE OF HWY 230 NE NW 29-88-47 (Note: Not to be used on legal documents)
Document(s)	DED: 730-4967 (6/27/2013)
Gross Acres	13.30
Net Acres	13.30
Exempt Acres	0.00
CSR	N/A
Class	R - Residential
Tax District	039 WOODBURY SGT BLUFF LUTON COMM
School District	SGT BLUFF LUTON



Owner

Primary Owner
(Deed Holder)
Zyzda Marilyn B Revocable Living Trust
Zyzda Marilyn B-Trustee
5710 Old Lakeport Rd
Sioux City, IA 51106

Secondary Owner

Land

Lot Area 13.30 Acres; 579,348 SF

Residential Dwellings

ZM Addition
5710 Old Lakeport Rd.
GIS Parcel #884729127001
Portion of NE NW Section 29
Woodbury Township
Zoned AE (Ag. Estates)

Residential Dwelling	
Occupancy	Single-Family / Owner Occupied
Style	1 Story Frame
Architectural Style	N/A
Year Built	1967
Condition	Normal
Grade what's this?	4+10
Roof	Asph / Hip
Flooring	L/C
Foundation	Conc
Exterior Material	WD/HD/BD
Interior Material	Drwl
Brick or Stone Veneer	
Total Gross Living Area	1,496 SF
Attic Type	None;
Number of Rooms	5 above; 2 below
Number of Bedrooms	3 above; 1 below
Basement Area Type	Full
Basement Area	1,496
Basement Finished Area	374 - Standard Finish
Plumbing	2 Base Plumbing (Full ; 1 Three Quarter Bath;
Appliances	1 Range Unit; 1 Oven - Single;
Central Air	Yes
Heat	Yes
Fireplaces	
Porches	
Decks	Concrete Patio-Med (446 SF);
Additions	
Garages	Basement Stall - 2 stalls;

Valuation

	2015	2014	2013	2012	2011
Classification	Residential	Residential	Residential	Residential	Residential
+ Assessed Land Value	\$67,550	\$67,550	\$67,550	\$67,550	\$67,550
+ Assessed Building Value	\$0	\$0	\$0	\$0	\$0
+ Assessed Dwelling Value	\$105,190	\$105,190	\$105,190	\$105,190	\$105,190
+ Exempt Value	\$0	\$0	\$0	\$0	\$0
= Gross Assessed Value	\$172,740	\$172,740	\$172,740	\$172,740	\$172,740
- Exempt Value	\$0	\$0	\$0	\$0	\$0
= Net Assessed Value	\$172,740	\$172,740	\$172,740	\$172,740	\$172,740

Treasurer Link

[Click here to view tax information for this parcel](#)

Iowa Land Records

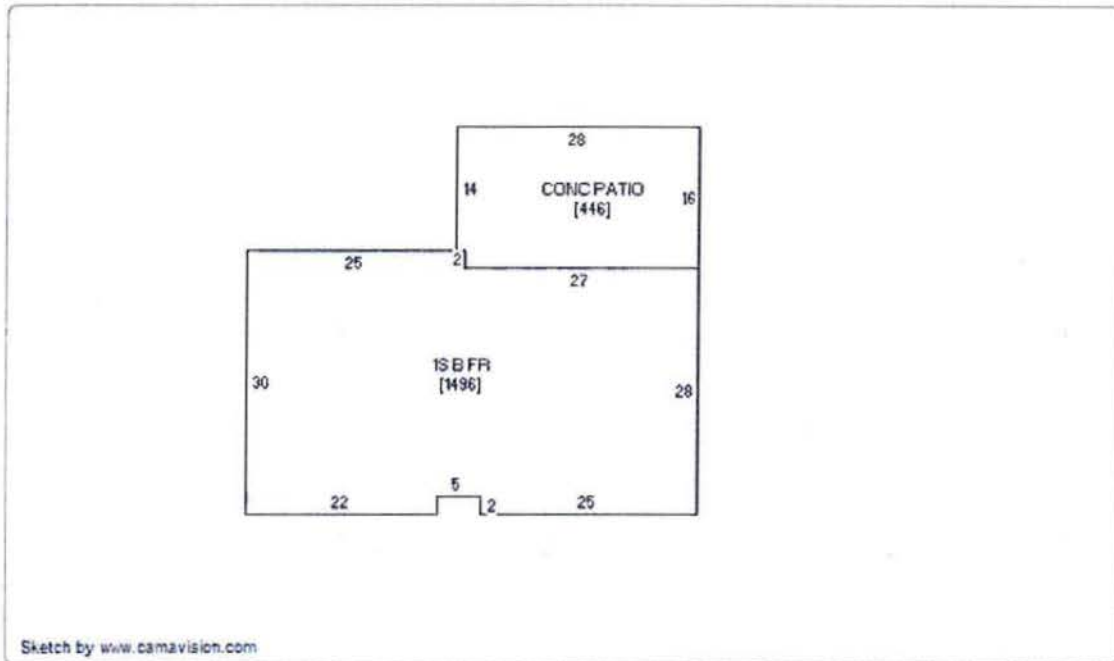
Book-Page: 730-4967 (6/27/2013)

Data for Woodbury County between Beacon and Iowa Land Records is available on the Iowa Land Records site beginning in 1994.
For records prior to 1994, contact the County Recorder or Customer Support at www.iowaLandRecords.org.

Photos



Sketches



No data available for the following modules: Commercial Buildings, Agricultural Buildings, Yard Extras, Sales, Permits, Valuation (Sioux City).

The maps and data available for access at this website are provided "as is" without warranty or any representation of accuracy, timeliness, or completeness. There are no warranties, expressed or implied, as to the appropriate use of the maps and data or the fitness for a particular purpose. The maps and associated data at this website do not represent a survey. No liability is assumed for the accuracy of the data delineated on any map, either expressed or implied.

Last Data Upload: 10/15/2015 11:56:53 PM

 Developed by
The Schneider Corporation



ZM Addition
5710 Old Lakeport Rd.
GIS Parcel #884729127001
Portion of NE NW Section 29
Woodbury Township
Zoned AE (Ag. Estates)

Address of Drive to Service Lot 1



ZM Addition
5710 Old Lakeport Rd.
GIS Parcel #884729127001
Portion of NE NW Section 29
Woodbury Township
Zoned AE (Ag. Estates)

Old Lakeport Rd. ROW Looking South From Lot 2's North Property Line



ZM Addition
5710 Old Lakeport Rd.
GIS Parcel #884729127001
Portion of NE NW Section 29
Woodbury Township
Zoned AE (Ag. Estates)

Old Lakeport Rd. ROW Looking South From Lot 1's Driveway



ZM Addition
5710 Old Lakeport Rd.
GIS Parcel #884729127001
Portion of NE NW Section 29
Woodbury Township
Zoned AE (Ag. Estates)

Old Lakeport Rd. ROW Looking South From Lot1's South Property Line


ZM Addition
5710 Old Lakeport Rd.
GIS Parcel #884729127001
Portion of NE NW Section 29
Woodbury Township
Zoned AE (Ag. Estates)

Old Lakeport Rd. ROW Looking North From Driveway Addressed 5708



ZM Addition
5710 Old Lakeport Rd.
GIS Parcel #884729127001
Portion of NE NW Section 29
Woodbury Township
Zoned AE (Ag. Estates)

Old Lakeport Rd. ROW Looking North From Driveway Addressed 5710



ZM Addition
5710 Old Lakeport Rd.
GIS Parcel #884729127001
Portion of NE NW Section 29
Woodbury Township
Zoned AE (Ag. Estates)

Looking east Along North Boundary of Parent Parcel (Proposed Lot 2)

ZM Addition
5710 Old Lakeport Rd.
GIS Parcel #884729127001
Portion of NE NW Section 29
Woodbury Township
Zoned AE (Ag. Estates)

Old Lakeport Rd. ROW Looking North From North Boundary of Parent Parcel
(Proposed Lot 2)



ZM Addition
5710 Old Lakeport Rd.
GIS Parcel #884729127001
Portion of NE NW Section 29
Woodbury Township
Zoned AE (Ag. Estates)

Dwelling on Proposed Lot 1 5710 Old Lakeport Rd.



ZM Addition
5710 Old Lakeport Rd.
GIS Parcel #884729127001
Portion of NE NW Section 29
Woodbury Township
Zoned AE (Ag. Estates)

Old Lakeport Rd. ROW Looking North From Driveway Addressed 5708

#13

WOODBURY COUNTY BOARD OF SUPERVISORS AGENDA ITEM(S) R

Date: October 28, 2015

Weekly Agenda Date: November 3, 2015

ELECTED OFFICIAL / DEPARTMENT HEAD / CITIZEN: Kenny Schmitz; Building Services

SUBJECT: Woodbury County - First in Iowa to Incorporate LED Lighting in all County Buildings

ACTION REQUIRED:

Approve Ordinance

Approve Resolution

Approve Motion

Give Direction

Other: Informational

Attachments

WORDING FOR AGENDA ITEM:

Woodbury County – First in Iowa to Incorporate LED Lighting in all County Buildings. Supplier Bids.

EXECUTIVE SUMMARY: LED- Lighting materials.

BACKGROUND: Five local supplier representatives were contacted & personal visitations were conducted with Building Services & the Baker Group prior to pre-bid. Bids consisted of Seven (7) Bid Pack categories which separated the needs of the various areas at County's buildings. Supplier LED material bids have now been received. One bid was returned un-opened to the supplier (who at the time of bid submittal) had informed Building Services & Baker Group that they did not include a bid bond, or complete all bid pack categories; both which were requirements of the bid process.

FINANCIAL IMPACT: \$510,507.71 (Materials before Mid-American rebates)

RECOMMENDATION: Building Services request's Approval of the LED material bid from ECHO. Echo within its bid submission provided 3 separate alternate bid options that utilized products from several different manufactures. This is of importance as it allowed ECHO to bid very competitively by choosing products manufactured by several different competing companies. This is favorable as it allows the county flexibility on options related to product choices & overall costs.

Original materials estimates prior to bid were \$556,330.50. There was no spare materials in this estimate.

Bid pricing in the amount of \$510,507.71 (ECHO) includes 5% spare material for light bulbs & 1% spare material for light fixture Retro-fit kits. This amount is \$45,822.79 lower than estimates.

ACTION REQUIRED / PROPOSED MOTION: Motion to approve LED Lighting materials bid from ECHO.

Woodbury County Bids 10-21-2015

	EVO KIT
Bid Package 1	\$ 14,382.57
Bid Package 2	\$ 207,860.00
.....Alt#1	
Bid Package 3	\$ 67,068.00
Bid Package 4	
.....Alt#1	\$ 51,409.92
Bid Package 5	\$ 12,400.00
Bid Package 6	\$ 142,702.22
Bid Package 7	\$ 14,685.00
Total	\$ 510,507.71
Original Budget	\$ 556,330.50
Savings	\$ 45,822.79

DIVISION 0 - CONTRACTUAL REQUIREMENTS

00300 PROPOSAL FORM - SUPPLIER

Woodbury County Board of Supervisors
Courthouse Building
Sioux City, IA

Proposals to be filed not later than 2:00 p.m. October 20th, 2015.

Bidders are required to have a physical business establishment located in Woodbury County, IA.

Having carefully examined the drawings, specifications, and premises Woodbury County LED Lighting Retrofit, Woodbury County, Iowa, as prepared by West Plains Engineering, the undersigned proposes to furnish all materials and comply with all requirements for the Work in accordance with said Documents.

This Project provides for liquidated delay damages. For the owner to obtain MidAmerican Rebates, the Light fixtures, and lamps need to be invoiced by December 31, 2015. Entire project shall be completed by May 1, 2016. Liquidated delay damages in the amount of the dollar difference in the 2015 & the 2016 rebates that the owner would have received from MidAmerican Energy for the Supplier's delay in completion of the work.

Apparent Low Bidders shall provide a Line Item List, per building within 48 hours upon receipt of bids.

Bid Package #1 ten thousand four hundred eighty eight
4 27/100 \$ 14,488.27

Bid Package #2 (Litronics) one hundred fifty three thousand
seven hundred fifty 4 76/100 \$ 153,750.76

Alternate #1 for Bid Package #2 eighty seven thousand three hundred
ninety eight 4 90/100 \$ 87,398.90

Bid Package #3 (Litronics) fifty eight thousand one hundred
eighty three 4 56/100 \$ 58,183.56

DIVISION 0 - CONTRACTUAL REQUIREMENTS

Bid Package #4 (Litetronics/Luxul) eighty five thousand six hundred forty eight +18/100 \$ 85,648.18

Alternate #1 for Bid Package #4 fifty one thousand four hundred nine +92/100 \$ 51,409.92

Bid Package #5 fifteen thousand two hundred fifty five +34/100 \$ 15,255.34

Bid Package #6 (Luxul) one hundred forty one five hundred fifty six +52/100 \$ 141,556.52

Bid Package #7 fourteen thousand six hundred eighty five +10/100 \$ 14,685.10

Receipt of the following Addenda acknowledged:

SN
SN

Submitted by:

Signed: Stephanie Vorstlaender

Company Echo Electric Supply

END OF SECTION

Alternate

DIVISION 0 - CONTRACTUAL REQUIREMENTS

00300 PROPOSAL FORM - SUPPLIER

Woodbury County Board of Supervisors
Courthouse Building
Sioux City, IA

Proposals to be filed not later than 2:00 p.m. October 20th, 2015.

Bidders are required to have a physical business establishment located in Woodbury County, IA.

Having carefully examined the drawings, specifications, and premises Woodbury County LED Lighting Retrofit, Woodbury County, Iowa, as prepared by West Plains Engineering, the undersigned proposes to furnish all materials and comply with all requirements for the Work in accordance with said Documents.

This Project provides for liquidated delay damages. For the owner to obtain MidAmerican Rebates, the Light fixtures, and lamps need to be invoiced by December 31, 2015. Entire project shall be completed by May 1, 2016. Liquidated delay damages in the amount of the dollar difference in the 2015 & the 2016 rebates that the owner would have received from MidAmerican Energy for the Supplier's delay in completion of the work.

Apparent Low Bidders shall provide a Line Item List, per building within 48 hours upon receipt of bids.

Bid Package #1 _____

_____ \$ _____

Bid Package #2 (EvoKit) Two hundred eighteen thousand

eight hundred and ^{no} / 100 — \$ 218,800.00

Alternate #1 for Bid Package #2 _____

_____ \$ _____

Bid Package #3 (EvoKit) seventy thousand one hundred

thirty six ⁵⁷ / 100 — \$ 70,136.57

DIVISION 0 - CONTRACTUAL REQUIREMENTS

Bid Package #4 (EvoKit/Luxid) ninety seven thousand
fifty three & 80/100 \$ 97,053.80

Alternate #1 for Bid Package #4 _____
\$ _____

Bid Package #5 _____
\$ _____

Bid Package #6 (Keystone) one hundred twenty six thousand seven
hundred seventy one & 07/100 \$ 126,771.07

Bid Package #7 _____
\$ _____

Receipt of the following Addenda acknowledged:

SV
SV

Submitted by:

Signed: Stephanie Vordlader

Company: Echo Electric Supply

END OF SECTION

Alternate

DIVISION 0 - CONTRACTUAL REQUIREMENTS

00300 PROPOSAL FORM - SUPPLIER

Woodbury County Board of Supervisors
Courthouse Building
Sioux City, IA

Proposals to be filed not later than 2:00 p.m. October 20th, 2015.

Bidders are required to have a physical business establishment located in Woodbury County, IA.

Having carefully examined the drawings, specifications, and premises Woodbury County LED Lighting Retrofit, Woodbury County, Iowa, as prepared by West Plains Engineering, the undersigned proposes to furnish all materials and comply with all requirements for the Work in accordance with said Documents.

This Project provides for liquidated delay damages. For the owner to obtain MidAmerican Rebates, the Light fixtures, and lamps need to be invoiced by December 31, 2015. Entire project shall be completed by May 1, 2016. Liquidated delay damages in the amount of the dollar difference in the 2015 & the 2016 rebates that the owner would have received from MidAmerican Energy for the Supplier's delay in completion of the work.

Apparent Low Bidders shall provide a Line Item List, per building within 48 hours upon receipt of bids.

Bid Package #1 _____

_____ \$ _____

Bid Package #2 _____

_____ \$ _____

Alternate #1 for Bid Package #2 _____

_____ \$ _____

Bid Package #3 _____

_____ \$ _____

DIVISION 0 - CONTRACTUAL REQUIREMENTS

Bid Package #4 (Keystone/Litronics) sixty seven thousand
four hundred ninety seven ^{59/100} \$ 67,497.59

Alternate #1 for Bid Package #4 _____
_____ \$ _____

Bid Package #5 _____
_____ \$ _____

Bid Package #6 _____
_____ \$ _____

Bid Package #7 _____
_____ \$ _____

Receipt of the following Addenda acknowledged:

GN
SN

Submitted by:

Signed: Stephanie Vouthaden

Company Echo Electric Supply

END OF SECTION

Alternate

DIVISION 0 - CONTRACTUAL REQUIREMENTS

00300 PROPOSAL FORM - SUPPLIER

Woodbury County Board of Supervisors
Courthouse Building
Sioux City, IA

Proposals to be filed not later than 2:00 p.m. October 20th, 2015.

Bidders are required to have a physical business establishment located in Woodbury County, IA.

Having carefully examined the drawings, specifications, and premises Woodbury County LED Lighting Retrofit, Woodbury County, Iowa, as prepared by West Plains Engineering, the undersigned proposes to furnish all materials and comply with all requirements for the Work in accordance with said Documents.

This Project provides for liquidated delay damages. For the owner to obtain MidAmerican Rebates, the Light fixtures, and lamps need to be invoiced by December 31, 2015. Entire project shall be completed by May 1, 2016. Liquidated delay damages in the amount of the dollar difference in the 2015 & the 2016 rebates that the owner would have received from MidAmerican Energy for the Supplier's delay in completion of the work.

Apparent Low Bidders shall provide a Line Item List, per building within 48 hours upon receipt of bids.

Bid Package #1 _____

_____ \$ _____

Bid Package #2 _____

_____ \$ _____

Alternate #1 for Bid Package #2 _____

_____ \$ _____

Bid Package #3 _____

_____ \$ _____

DIVISION 0 - CONTRACTUAL REQUIREMENTS

Bid Package #4 (EvoKit/Keystone) seventy nine thousand
four hundred seventeen + ^{37/100} - \$ 79,417.37

Alternate #1 for Bid Package #4 _____

_____ \$ _____

Bid Package #5 _____

_____ \$ _____

Bid Package #6 _____

_____ \$ _____

Bid Package #7 _____

_____ \$ _____

Receipt of the following Addenda acknowledged:

GN
GN

Submitted by:

Signed: Stephanie Vorhaden

Company: Echo Electric Supply

END OF SECTION



Expiration Date: 11/19/15

Quotation**TO:**WOODBURY COUNTY BUILDING SERVICE
620 DOUGLAS STREET
SIOUX CITY, IA 51101**Project Info:**Project: Woodbury County LED Lighting Retrofit
Job #: #Li-101515-22970
Bid Date: 10/20/15
Bid Time: 02:00 PM CDT
Quoter: Stephanie VonHaden 34

Type	Quantity	Vendor	Description	Unit or Lot#	Unit Price	Ext Price
	0		BID PACKAGE 1	Unit	0.000/EA	0.00
F1	51	EIKO LTD	LED14WPAR38/FL/830K-DIM-G4A	Unit	10.963/EA	559.11
F1-SPARE	4	EIKO LTD	LED14WPAR38/FL/830K-DIM-G4A	Unit	10.963/EA	43.85
F2	6	SATCO	S9402	Unit	8.503/EA	51.02
F2-SPARE	4	SATCO	S9402	Unit	8.503/EA	34.01
G1	70	EIKO LTD	LED7WPAR30/FL/830K-DIM-G4A	Unit	7.754/EA	542.78
G1-SPARE	4	EIKO LTD	LED7WPAR30/FL/830K-DIM-G4A	Unit	7.754/EA	31.02
G2	13	EIKO LTD	LED7WPAR30/FL/830K-DIM-G4A	Unit	7.754/EA	100.80
G2-SPARE	4	EIKO LTD	LED7WPAR30/FL/830K-DIM-G4A	Unit	7.754/EA	31.02
G3	0	EIKO LTD	LED7WPAR30/FL/830K-DIM-G4A	Unit	7.754/EA	0.00
K1	450	EIKO LTD	LED7WA19/240/827K-DIM-G5A	Unit	3.369/EA	1,516.05
K1-SPARE	23	EIKO LTD	LED7WA19/240/827K-DIM-G5A	Unit	3.369/EA	77.49

From:ECHO ELECTRIC SUPPLY * BR 34 *
OFFICE 712-252-3251
1200 CUNNINGHAM DRIVE
PO BOX 1767
SIOUX CITY, IA 51106
Printed By: Stephanie VonHaden 34**Notes**



Project: Woodbury County LED Lighting Retrofit
Expiration **11/19/15**

Type	Quantity	Vendor	Description	LOT #	Unit Price	Ext Price
K2	345	EIKO LTD	LED9WA19/240/827K-DIM-G5A	Unit	4.257/EA	1,468.67
K2-SPARE	17	EIKO LTD	LED9WA19/240/827K-DIM-G5A	Unit	4.257/EA	72.37
K3	51	EIKO LTD	LED17WA21/300/827K-DIM-G4	Unit	11.765/EA	600.02
K3-SPARE	4	EIKO LTD	LED17WA21/300/827K-DIM-G4	Unit	11.765/EA	47.06
M1	3	EIKO LTD	LED17WPAR38/FL/830K-DIM-G4A	Unit	12.824/EA	38.47
M1-SPARE	4	EIKO LTD	LED17WPAR38/FL/830K-DIM-G4A	Unit	12.824/EA	51.30
N1	219	SATCO	S9301	Unit	19.198/EA	4,204.36
N1-SPARE	11	SATCO	S9301	Unit	19.198/EA	211.18
N2	12	SATCO	S9309	Unit	19.198/EA	230.38
N2-SPARE	4	SATCO	S9309	Unit	19.198/EA	76.79
P2	13	LIGHT EF	LED-7302-35A	Unit	19.251/EA	250.26
P2-SPARE	4	LIGHT EF	LED-7302-35A	Unit	19.251/EA	77.00
P3	5	LIGHT EF	LED-7302-35A	Unit	19.251/EA	96.26
P3-SPARE	4	LIGHT EF	LED-7302-35A	Unit	19.251/EA	77.00

Base Bid Total 10,488.27

BID PACKAGE 2

A1	193	LITRON-AES	RF32UQT435	Unit	70.270/EA	13,562.11
A2	1,103	LITRON-AES	RF32UQT435	Unit	70.270/EA	77,507.81
A3	155	LITRON-AES	RF32UQT435	Unit	70.270/EA	10,891.85
A4	411	LITRON-AES	RF32UQT435	Unit	70.270/EA	28,880.97
A5	196	LITRON-AES	RF32UQT435	Unit	70.270/EA	13,772.92
A6	108	LITRON-AES	RF32UQT435	Unit	70.270/EA	7,589.16
A1-A6 SPARE	22	LITRON-AES	RF32UQT435	Unit	70.270/EA	1,545.94



Project: Woodbury County LED Lighting Retrofit
Expiration 11/19/15

[Empty rectangular box]

Type	Quantity	Vendor	Description	LOT #	Unit Price	Ext Price
------	----------	--------	-------------	-------	------------	-----------

Subtotal of BID PACKAGE 2 153,750.76

BID PACKAGE 2 - ALT

A1	386	KEYSTONE	KT-LED18T8-48GC-835-D	Unit	10.757/EA	4,152.20
A1-SOCKET	193	KEYSTONE	KT-SOCKET-T8-U-T-2-W	Unit	2.703/EA	521.68
A2	4,412	KEYSTONE	KT-LED18T8-48GC-835-D	Unit	10.757/EA	47,459.88
A2-SOCKET	1,103	KEYSTONE	KT-SOCKET-T8-U-T-4-W	Unit	3.189/EA	3,517.47
A3	620	KEYSTONE	KT-LED18T8-48GC-835-D	Unit	10.757/EA	6,669.34
A3-SOCKET	155	KEYSTONE	KT-SOCKET-T8-U-T-4-W	Unit	3.189/EA	494.30
A4	822	KEYSTONE	KT-LED18T8-48GC-835-D	Unit	10.757/EA	8,842.25
A4-SOCKET	411	KEYSTONE	KT-SOCKET-T8-U-T-2-W	Unit	2.703/EA	1,110.93
A5	588	KEYSTONE	KT-LED18T8-48GC-835-D	Unit	10.757/EA	6,325.12
A5-SOCKET	196	KEYSTONE	KT-SOCKET-T8-U-T-4-W	Unit	3.189/EA	625.04
A6	324	KEYSTONE	KT-LED18T8-48GC-835-D	Unit	10.757/EA	3,485.27
A6-SOCKET	108	KEYSTONE	KT-SOCKET-T8-U-T-4-W	Unit	3.189/EA	344.41
SPARE	358	KEYSTONE	KT-LED18T8-48GC-835-D	Unit	10.757/EA	3,851.01

Subtotal of BID PACKAGE 2 - ALT 87,398.90

BID PACKAGE 3

D1	581	LITRON-AES	RF32UQT235	Unit	70.270/EA	40,826.87
D3	238	LITRON-AES	RF32UQT235	Unit	70.270/EA	16,724.26
SPARE	9	LITRON-AES	RF32UQT235	Unit	70.270/EA	632.43

Subtotal of BID PACKAGE 3 58,183.56

BID PACKAGE 4

A7	325	LITRON-AES	RF32UQT435	Unit	70.270/EA	22,837.75
A8	38	LITRON-AES	RF32UQT435	Unit	70.270/EA	2,670.26



Project: Woodbury County LED Lighting Retrofit
Expiration 11/19/15

Type	Quantity	Vendor	Description	LOT #	Unit Price	Ext Price
A9	31	LITRON-AES	RF32UQT435	Unit	70.270/EA	2,178.37
A10	3	LITRON-AES	RF32UQT435	Unit	70.270/EA	210.81
A-SPARE	4	LITRON-AES	RF32UQT435	Unit	70.270/EA	281.08
C1	272	LUXUL TE	Q8N4F35G	Unit	17.286/EA	4,701.79
C1-BALLAST	272	Stock	OSR 49969 OSR QHE-2X32T8-UNV-ISN-SC-B	Unit	10.586/EA	2,879.39
C2	57	LUXUL TE	Q8N4F35G	Unit	17.286/EA	985.30
C3	1,058	LUXUL TE	Q8N4F35G	Unit	17.286/EA	18,288.59
C3-BALLAST	529	Stock	OSR 49969 OSR QHE-2X32T8-UNV-ISN-SC-B	Unit	10.586/EA	5,599.99
C4	608	LUXUL TE	Q8N4F35G	Unit	17.286/EA	10,509.89
C5	510	LUXUL TE	Q8N4F35G	Unit	17.286/EA	8,815.86
C6	0	LUXUL TE	Q8N4F35G	Unit	17.286/EA	0.00
C7	8	LUXUL TE	Q8N4F35G	Unit	17.286/EA	138.29
C1-C7 SPARE	126	LUXUL TE	Q8N4F35G	Unit	17.286/EA	2,178.04
C8	2	LUXUL TE	E8N2835G	Unit	15.124/EA	30.25
C8-SPARE	4	LUXUL TE	E8N2835G	Unit	15.124/EA	60.50
C9	4	LUXUL TE	E8N3835G	Unit	21.611/EA	86.44
C9-SPARE	4	LUXUL TE	E8N3835G	Unit	21.611/EA	86.44
D2	74	LUXUL TE	E8N2835G	Unit	15.124/EA	1,119.18
D2-SPARE	4	LUXUL TE	E8N2835G	Unit	15.124/EA	60.50
D2-BALLAST	32	Stock	OSR 49969 OSR QHE-2X32T8-UNV-ISN-SC-B	Unit	10.586/EA	338.75
R1	10	LUXUL TE	E8N2835G	Unit	15.124/EA	151.24
R1-SPARE	4	LUXUL TE	E8N2835G	Unit	15.124/EA	60.50
R2	2	LIGHT EF	LED-6123-UL-3-40K-BFR	Unit	35.946/EA	71.89



Project: Woodbury County LED Lighting Retrofit
Expiration 11/19/15

Type	Quantity	Vendor	Description	LOT #	Unit Price	Ext Price
R2-SPARE	4	LIGHT EF	LED-6123-UL-3-40K-BFR	Unit	35.946/EA	143.78
R3	6	LUXUL TE	Q8N4F35G	Unit	17.286/EA	103.72
R3-SPARE	4	LUXUL TE	Q8N4F35G	Unit	17.286/EA	69.14
T3	16	LUXUL TE	E8N2835G	Unit	15.124/EA	241.98
T3-SPARE	4	LUXUL TE	E8N2835G	Unit	15.124/EA	60.50
T3-BALLAST	16	Stock	OSR 49969 OSR QHE-2X32T8-UNV-ISN-SC-B	Unit	10.586/EA	169.38
T4	26	LUXUL TE	Q8N4F35G	Unit	17.286/EA	449.44
T4-SPARE	4	LUXUL TE	Q8N4F35G	Unit	17.286/EA	69.14

Subtotal of BID PACKAGE 4 85,648.18

BID PACKAGE 4 - ALT

A7	1,300	KEYSTONE	KT-LED18T8-48GC-835-D	Unit	10.757/EA	13,984.10
A7-SOCKET	325	KEYSTONE	KT-SOCKET-T8-U-T-4-W	Unit	3.189/EA	1,036.43
A8	76	KEYSTONE	KT-LED18T8-48GC-835-D	Unit	10.757/EA	817.53
A8-SOCKET	38	KEYSTONE	KT-SOCKET-T8-U-T-2-W	Unit	2.703/EA	102.71
A9	62	KEYSTONE	KT-LED18T8-48GC-835-D	Unit	10.757/EA	666.93
A8-SOCKET	31	KEYSTONE	KT-SOCKET-T8-U-T-2-W	Unit	2.703/EA	83.79
A10	9	KEYSTONE	KT-LED18T8-48GC-835-D	Unit	10.757/EA	96.81
A10-SOCKET	3	KEYSTONE	KT-SOCKET-T8-U-T-4-W	Unit	3.189/EA	9.57
C1	272	KEYSTONE	KT-LED18T8-48GC-835-D	Unit	10.757/EA	2,925.90
C1-SOCKET	272	KEYSTONE	KT-SOCKET-T8-U-T-2-W	Unit	2.703/EA	735.22
C2	57	KEYSTONE	KT-LED18T8-48GC-835-D	Unit	10.757/EA	613.15
C2-SOCKET	57	KEYSTONE	KT-SOCKET-T8-U-T-2-W	Unit	2.703/EA	154.07
C3	1,058	KEYSTONE	KT-LED18T8-48GC-835-D	Unit	10.757/EA	11,380.91



Project: Woodbury County LED Lighting Retrofit
Expiration 11/19/15

Type	Quantity	Vendor	Description	LOT #	Unit Price	Ext Price
C3-SOCKET	529	KEYSTONE	KT-SOCKET-T8-U-T-2-W	Unit	2.703/EA	1,429.89
C4	608	KEYSTONE	KT-LED18T8-48GC-835-D	Unit	10.757/EA	6,540.26
C4-SOCKET	304	KEYSTONE	KT-SOCKET-T8-U-T-2-W	Unit	2.703/EA	821.71
C5	510	KEYSTONE	KT-LED18T8-48GC-835-D	Unit	10.757/EA	5,486.07
C5-SOCKET	255	KEYSTONE	KT-SOCKET-T8-U-T-2-W	Unit	2.703/EA	689.27
C6	0	KEYSTONE	KT-LED18T8-48GC-835-D	Unit	10.757/EA	0.00
C6-SOCKET	0	KEYSTONE	KT-SOCKET-T8-U-T-2-W	Unit	2.703/EA	0.00
C7	8	KEYSTONE	KT-LED18T8-48GC-835-D	Unit	10.757/EA	86.06
C7-SOCKET	2	KEYSTONE	KT-SOCKET-T8-U-T-4-W	Unit	3.189/EA	6.38
C8	2	KEYSTONE	KT-LED9T8-24GC-835-S	Unit	10.270/EA	20.54
C9	4	KEYSTONE	KT-LED11T8-36GC-835-S	Unit	10.541/EA	42.16
D2	74	KEYSTONE	KT-LED9T8-24GC-835-S	Unit	10.270/EA	759.98
R1	10	KEYSTONE	KT-LED9T8-24GC-835-S	Unit	10.270/EA	102.70
R2	2	KEYSTONE	KT-LED11T8-36GC-835-S	Unit	10.541/EA	21.08
R3	6	KEYSTONE	KT-LED18T8-48GC-835-D	Unit	10.757/EA	64.54
R3-SOCKET	3	KEYSTONE	KT-SOCKET-T8-U-T-2-W	Unit	2.703/EA	8.11
T3	16	KEYSTONE	KT-LED9T8-24GC-835-S	Unit	10.270/EA	164.32
T4	26	KEYSTONE	KT-LED18T8-48GC-835-D	Unit	10.757/EA	279.68
T4-SOCKET	13	KEYSTONE	KT-SOCKET-T8-U-T-2-W	Unit	2.703/EA	35.14
SPARE	200	KEYSTONE	KT-LED18T8-48GC-835-D	Unit	10.757/EA	2,151.40
SPARE	5	KEYSTONE	KT-LED9T8-24GC-835-S	Unit	10.270/EA	51.35
SPARE	4	KEYSTONE	KT-LED11T8-36GC-835-S	Unit	10.541/EA	42.16

Subtotal of BID PACKAGE 4 - ALT

51,409.92



Project: Woodbury County LED Lighting Retrofit
Expiration 11/19/15

Type	Quantity	Vendor	Description	LOT #	Unit Price	Ext Price
------	----------	--------	-------------	-------	------------	-----------

BID PACKAGE 5

J3	8	AMERLUX	FL8-VWF-50-BLK-WML-18	Unit	1,906.918/EA	15,255.34
Subtotal of BID PACKAGE 5						15,255.34

BID PACKAGE 6

B1	546 2,184	COOPER:AE LUXUL TE	APS-8WS232 Q8N4F35G Per item quantity: 4	Unit Included	104.933/EA	57,293.41
H1	50	GE LIGHT	ABV102V471NVSTANW	Unit	440.237/EA	22,011.85
J1	86	COOPER:AE	XOTR2A	Unit	146.923/EA	12,635.38
J2	14	LITH-CS	TWR1-LED-1-40K-MVOLT *****J2 IS NOT DLC LISTED AND WILL NOT QUALIFY FOR REBATES*****	Unit	175.000/EA	2,450.00
T1	70 70	COOPER:AE LUXUL TE	APS-NS132 Q8N4F35G Per item quantity: 1	Unit Included	39.865/EA	2,790.55
T2	26 26	COOPER:AE LUXUL TE	APS-NS117 E8N2F35G Per item quantity: 1	Unit Included	37.703/EA	980.27
T5	40	TRAXON T	MB.CO.2713565 VERIFY PART NUMBER NONE GIVEN	Unit	243.158/EA	9,726.32
T6	7	TRAXON T	MB.CO.0913565 VERIFY PART NUMBER NONE GIVEN	Unit	96.842/EA	677.89
T5/T6	30	TRAXON T	MB.AC.1000100 6FT STARTER CABLE ONE NEEDED PER RUN	Unit	7.368/EA	221.04
T5/T6	47	TRAXON T	MB.AC.1000300 3FT JUMPER CABLE	Unit	6.316/EA	296.85
X1	178	BARRON L	VEX-U-BP-WB-WH-G2	Unit	31.579/EA	5,621.06



Project: Woodbury County LED Lighting Retrofit
Expiration 11/19/15

Type	Quantity	Vendor	Description	LOT #	Unit Price	Ext Price
X2	10	BARRON L	VEX-U-BP-WB-WH-G2	Unit	31.579/EA	315.79
X3	37	EMERGI-L	WWSVXN1R-D-4X	Unit	158.947/EA	5,881.04
L1	18	GE LIGHT	ABV102T471NVSTANW	Unit	381.065/EA	6,859.17
L3	32	TRACE-LI	TLED-C-20-VS-LG-WH-TP	Unit	368.553/EA	11,793.70
Q1	1	GE LIGHT	LED15FM12-W120	Unit	40.237/EA	40.24
Q2	0		TBD	Unit	0.000/EA	0.00
V1	10		TBD	Unit	0.000/EA	0.00
SPARE	110	LUXUL TE	Q8N4F35G	Unit	17.286/EA	1,901.46
SPARE	4	LUXUL TE	E8N2B35G	Unit	15.124/EA	60.50
Subtotal of BID PACKAGE 6						141,556.52

BID PACKAGE 7

L2	12	NEPTUN L	LED35650-UNV-830-E40	Unit	181.622/EA	2,179.46
L2-SPARE	4	NEPTUN L	LED35650-UNV-830-E40	Unit	181.622/EA	726.49
L5	24	SATCO	S9350	Unit	43.189/EA	1,036.54
L5-SPARE	4	SATCO	S9350	Unit	43.189/EA	172.76
L6	2	LIGHT EF	LED-8055E42	Unit	102.703/EA	205.41
L6-SPARE	4	LIGHT EF	LED-8055E42	Unit	102.703/EA	410.81
U1	19	LIGHT EF	LED-8090M4T3	Unit	301.622/EA	5,730.82
U1-SPARE	4	LIGHT EF	LED-8090M4T3	Unit	301.622/EA	1,206.49
U2	6	LIGHT EF	LED-8090M4T3	Unit	301.622/EA	1,809.73
U2-SPARE	4	LIGHT EF	LED-8090M4T3	Unit	301.622/EA	1,206.49
Subtotal of BID PACKAGE 7						14,685.00

BID PACKAGE 2 - EVOKIT



Project: Woodbury County LED Lighting Retrofit
Expiration **11/19/15**

Type	Quantity	Vendor	Description	LOT #	Unit Price	Ext Price
A1	193	PHILIPS	EVOKIT 506865	Unit	100.000/EA	19,300.00
A2	1,103	PHILIPS	EVOKIT 506865	Unit	100.000/EA	110,300.00
A3	155	PHILIPS	EVOKIT 506865	Unit	100.000/EA	15,500.00
A4	411	PHILIPS	EVOKIT 506865	Unit	100.000/EA	41,100.00
A5	196	PHILIPS	EVOKIT 506865	Unit	100.000/EA	19,600.00
A6	108	PHILIPS	EVOKIT 506865	Unit	100.000/EA	10,800.00
A1-A6 SPARE	22	PHILIPS	EVOKIT 506865	Unit	100.000/EA	2,200.00
Subtotal of BID PACKAGE 2 - EVOKIT						218,800.00

BID PACKAGE 3 - EVOKIT

D1	581	PHILIPS	EVOKIT 501734	Unit	84.706/EA	49,214.19
D3	238	PHILIPS	EVOKIT 501734	Unit	84.706/EA	20,160.03
SPARE	9	PHILIPS	EVOKIT 501734	Unit	84.706/EA	762.35
Subtotal of BID PACKAGE 3 - EVOKIT						70,136.57

BID PACKAGE 4 - EVOKIT

A7	325	PHILIPS	EVOKIT 50865	Unit	100.000/EA	32,500.00
A8	38	PHILIPS	EVOKIT 506865	Unit	100.000/EA	3,800.00
A9	31	PHILIPS	EVOKIT 506865	Unit	100.000/EA	3,100.00
A10	3	PHILIPS	EVOKIT 506865	Unit	100.000/EA	300.00
A-SPARE	4	PHILIPS	EVOKIT 506865	Unit	100.000/EA	400.00
C1	272	LUXUL TE	Q8N4F35G	Unit	17.102/EA	4,651.74
C1-BALLAST	272	Stock	OSR 49969 OSR QHE-2X32T8-UNV-ISN-SC-B	Unit	10.586/EA	2,879.39
C2	57	LUXUL TE	Q8N4F35G	Unit	17.102/EA	974.81
C3	1,058	LUXUL TE	Q8N4F35G	Unit	17.102/EA	18,093.92



Project: Woodbury County LED Lighting Retrofit
Expiration **11/19/15**

Type	Quantity	Vendor	Description	LOT #	Unit Price	Ext Price
C3-BALLAST	529	Stock	OSR 49969 OSR QHE-2X32T8-UNV-ISN-SC-B	Unit	10.586/EA	5,599.99
C4	608	LUXUL TE	Q8N4F35G	Unit	17.102/EA	10,398.02
C5	510	LUXUL TE	Q8N4F35G	Unit	17.102/EA	8,722.02
C6	0	LUXUL TE	Q8N4F35G	Unit	17.102/EA	0.00
C7	8	LUXUL TE	Q8N4F35G	Unit	17.102/EA	136.82
C1-C7 SPARE	126	LUXUL TE	Q8N4F35G	Unit	17.102/EA	2,154.85
C8	2	LUXUL TE	E8N2835G	Unit	14.963/EA	29.93
C8-SPARE	4	LUXUL TE	E8N2835G	Unit	14.963/EA	59.85
C9	4	LUXUL TE	E8N3835G	Unit	21.380/EA	85.52
C9-SPARE	4	LUXUL TE	E8N3835G	Unit	21.380/EA	85.52
D2	74	LUXUL TE	E8N2835G	Unit	14.963/EA	1,107.26
D2-SPARE	4	LUXUL TE	E8N2835G	Unit	14.963/EA	59.85
D2-BALLAST	32	Stock	OSR 49969 OSR QHE-2X32T8-UNV-ISN-SC-B	Unit	10.586/EA	338.75
R1	10	LUXUL TE	E8N2835G	Unit	14.963/EA	149.63
R1-SPARE	4	LUXUL TE	E8N2835G	Unit	14.963/EA	59.85
R2	2	LIGHT EF	LED-6123-UL-3-40K-BFR	Unit	35.561/EA	71.12
R2-SPARE	4	LIGHT EF	LED-6123-UL-3-40K-BFR	Unit	35.561/EA	142.24
R3	6	LUXUL TE	Q8N4F35G	Unit	17.102/EA	102.61
R3-SPARE	4	LUXUL TE	Q8N4F35G	Unit	17.102/EA	68.41
T3	16	LUXUL TE	E8N2835G	Unit	14.963/EA	239.41
T3-SPARE	4	LUXUL TE	E8N2835G	Unit	14.963/EA	59.85
T3-BALLAST	16	Stock	OSR 49969 OSR QHE-2X32T8-UNV-ISN-SC-B	Unit	10.586/EA	169.38
T4	26	LUXUL TE	Q8N4F35G	Unit	17.102/EA	444.65



Project: Woodbury County LED Lighting Retrofit
Expiration **11/19/15**

Type	Quantity	Vendor	Description	LOT #	Unit Price	Ext Price
------	----------	--------	-------------	-------	------------	-----------

T4-SPARE	4	LUXUL TE	Q8N4F35G	Unit	17.102/EA	68.41
----------	---	----------	----------	------	-----------	-------

Subtotal of BID PACKAGE 4 - EVOKIT**97,053.80****BID PACKAGE 4 - KEYSTONE/LITERONICS**

A7	325	LITRON-AES	RF32UQT435	Unit	70.270/EA	22,837.75
A8	38	LITRON-AES	RF32UQT435	Unit	70.270/EA	2,670.26
A9	31	LITRON-AES	RF32UQT435	Unit	70.270/EA	2,178.37
A10	3	LITRON-AES	RF32UQT435	Unit	70.270/EA	210.81
A-SPARE	4	LITRON-AES	RF32UQT435	Unit	70.270/EA	281.08
C1	272	KEYSTONE	KT-LED18T8-48GC-835-S	Unit	10.757/EA	2,925.90
C1-BALLAST	272	Stock	OSR 49969 OSR QHE-2X32T8-UNV-ISN-SC-B	Unit	10.586/EA	2,879.39
C2	57	KEYSTONE	KT-LED18T8-48GC-835-S	Unit	10.757/EA	613.15
C3	1,058	KEYSTONE	KT-LED18T8-48GC-835-S	Unit	10.757/EA	11,380.91
C3-BALLAST	529	Stock	OSR 49969 OSR QHE-2X32T8-UNV-ISN-SC-B	Unit	10.586/EA	5,599.99
C4	608	KEYSTONE	KT-LED18T8-48GC-835-S	Unit	10.757/EA	6,540.26
C5	510	KEYSTONE	KT-LED18T8-48GC-835-S	Unit	10.757/EA	5,486.07
C6	0	KEYSTONE	KT-LED18T8-48GC-835-S	Unit	10.757/EA	0.00
C7	8	KEYSTONE	KT-LED18T8-48GC-835-S	Unit	10.757/EA	86.06
C1-C7 SPARE	126	KEYSTONE	KT-LED18T8-48GC-835-S	Unit	10.757/EA	1,355.38
C8	2	KEYSTONE	KT-LED9T8-24GC-835-S	Unit	10.270/EA	20.54
C8-SPARE	4	KEYSTONE	KT-LED9T8-24GC-835-S	Unit	10.270/EA	41.08
C9	4	KEYSTONE	KT-LED-11T8-36GC-835-S	Unit	10.541/EA	42.16
C9-SPARE	4	KEYSTONE	KT-LED-11T8-36GC-835-S	Unit	10.541/EA	42.16
D2	74	KEYSTONE	KT-LED9T8-24GC-835-S	Unit	10.270/EA	759.98



Project: Woodbury County LED Lighting Retrofit
Expiration 11/19/15

Type	Quantity	Vendor	Description	LOT #	Unit Price	Ext Price
D2-SPARE	4	KEYSTONE	KT-LED9T8-24GC-835-S		Unit	10.270/EA 41.08
D2-BALLAST	32	Stock	OSR 49969 OSR QHE-2X32T8-UNV-ISN-SC-B		Unit	10.586/EA 338.75
R1	10	KEYSTONE	KT-LED9T8-24GC-835-S		Unit	10.270/EA 102.70
R1-SPARE	4	KEYSTONE	KT-LED9T8-24GC-835-S		Unit	10.270/EA 41.08
R2	2	LIGHT EF	LED-6123-UL-3-40K-BFR		Unit	35.946/EA 71.89
R2-SPARE	4	LIGHT EF	LED-6123-UL-3-40K-BFR		Unit	35.946/EA 143.78
R3	6	KEYSTONE	KT-LED18T8-48GC-835-S		Unit	10.757/EA 64.54
R3-SPARE	4	KEYSTONE	KT-LED18T8-48GC-835-S		Unit	10.757/EA 43.03
T3	16	KEYSTONE	KT-LED9T8-24GC-835-S		Unit	10.270/EA 164.32
T3-SPARE	4	KEYSTONE	KT-LED9T8-24GC-835-S		Unit	10.757/EA 43.03
T3-BALLAST	16	Stock	OSR 49969 OSR QHE-2X32T8-UNV-ISN-SC-B		Unit	10.586/EA 169.38
T4	26	KEYSTONE	KT-LED18T8-48GC-835-S		Unit	10.757/EA 279.68
T4-SPARE	4	KEYSTONE	KT-LED18T8-48GC-835-S		Unit	10.757/EA 43.03

Subtotal of BID PACKAGE 4 - 67,497.59
KEYSTONE/LITERONICS

BID PACKAGE 6 - KEYSTONE

B1	546	COOPER:AE	APS-8WS232		Unit	78.817/EA 43,034.08
	2,184	KEYSTONE	KT-LED17T8-48GC-835-S		Included	
Per item quantity: 4						
H1	50	GE LIGHT	ABV102V471NVSTANW		Unit	440.237/EA 22,011.85
J1	86	COOPER:AE	XOTR2A		Unit	156.164/EA 13,430.10
J2	14	LITH-CS	TWR1-LED-1-40K-MVOLT		Unit	175.000/EA 2,450.00
T1	70	COOPER:AE	APS-NS132		Unit	33.336/EA 2,333.52
	70	KEYSTONE	KT-LED17T8-48GC-835-S		Included	
Per item quantity: 1						



Project: Woodbury County LED Lighting Retrofit
Expiration 11/19/15

Type	Quantity	Vendor	Description	LOT #	Unit Price	Ext Price
T2	26	COOPER:AE	APS-NS117	Unit	32.849/EA	854.07
	26	KEYSTONE	KT-LED9T8-24GC-835-S	Included		
			Per item quantity: 1			
T5	40	TRAXON T	MB.CO.2713565	Unit	243.158/EA	9,726.32
T6	7	TRAXON T	MB.CO.0913565	Unit	96.842/EA	677.89
T5/T6	30	TRAXON T	MB.AC.1000100	Unit	7.368/EA	221.04
T5/T6	47	TRAXON T	MB.AC.1000300	Unit	6.316/EA	296.85
X1	178	BARRON L	VEX-U-BP-WB-WH-G2	Unit	31.579/EA	5,621.06
X2	10	BARRON L	VEX-U-BP-WB-WH-G2	Unit	31.579/EA	315.79
X3	37	EMERGI-L	WWSVXN1R-D-4X	Unit	158.947/EA	5,881.04
L1	18	GE LIGHT	ABV102T471NVSTANW	Unit	381.065/EA	6,859.17
L3	32	TRACE-LI	TLED-C-20-VS-LG-WH-TP	Unit	368.553/EA	11,793.70
Q1	1	GE LIGHT	LED15FM12-W120	Unit	40.237/EA	40.24
Q2	0		TBD	Unit	0.000/EA	0.00
V1	10		TBD	Unit	0.000/EA	0.00
SPARE	110	KEYSTONE	KT-LED17T8-48GC-835-S	Unit	10.757/EA	1,183.27
SPARE	4	KEYSTONE	KT-LED9T8-24GC-835-S	Unit	10.270/EA	41.08
Subtotal of BID PACKAGE 6 - KEYSTONE						126,771.07

BID PACKAGE 4 - EVOKIT/KEYSTONE

A7	325	PHILIPS	EVOKIT 50865	Unit	100.000/EA	32,500.00
A8	38	PHILIPS	EVOKIT 506865	Unit	100.000/EA	3,800.00
A9	31	PHILIPS	EVOKIT 506865	Unit	100.000/EA	3,100.00
A10	3	PHILIPS	EVOKIT 506865	Unit	100.000/EA	300.00
A-SPARE	4	PHILIPS	EVOKIT 506865	Unit	100.000/EA	400.00



Project: Woodbury County LED Lighting Retrofit
Expiration **11/19/15**

Type	Quantity	Vendor	Description	LOT #	Unit Price	Ext Price
C1	272	KEYSTONE	KT-LED18T8-48GC-835-S	Unit	10.757/EA	2,925.90
C1-BALLAST	272	Stock	OSR 49969 OSR QHE-2X32T8-UNV-ISN-SC-B	Unit	10.586/EA	2,879.39
C2	57	KEYSTONE	KT-LED18T8-48GC-835-S	Unit	10.757/EA	613.15
C3	1,058	KEYSTONE	KT-LED18T8-48GC-835-S	Unit	10.757/EA	11,380.91
C3-BALLAST	529	Stock	OSR 49969 OSR QHE-2X32T8-UNV-ISN-SC-B	Unit	10.586/EA	5,599.99
C4	608	KEYSTONE	KT-LED18T8-48GC-835-S	Unit	10.757/EA	6,540.26
C5	510	KEYSTONE	KT-LED18T8-48GC-835-S	Unit	10.757/EA	5,486.07
C6	0	KEYSTONE	KT-LED18T8-48GC-835-S	Unit	10.757/EA	0.00
C7	8	KEYSTONE	KT-LED18T8-48GC-835-S	Unit	10.757/EA	86.06
C1-C7 SPARE	126	KEYSTONE	KT-LED18T8-48GC-835-S	Unit	10.757/EA	1,355.38
C8	2	KEYSTONE	KT-LED9T8-24GC-835-S	Unit	10.270/EA	20.54
C8-SPARE	4	KEYSTONE	KT-LED9T8-24GC-835-S	Unit	10.270/EA	41.08
C9	4	KEYSTONE	KT-LED11T8-36GC-835-S	Unit	10.541/EA	42.16
C9-SPARE	4	KEYSTONE	KT-LED11T8-36GC-835-S	Unit	10.541/EA	42.16
D2	74	KEYSTONE	KT-LED9T8-24GC-835-S	Unit	10.270/EA	759.98
D2-SPARE	4	KEYSTONE	KT-LED9T8-24GC-835-S	Unit	10.270/EA	41.08
D2-BALLAST	32	Stock	OSR 49969 OSR QHE-2X32T8-UNV-ISN-SC-B	Unit	10.586/EA	338.75
R1	10	KEYSTONE	KT-LED9T8-24GC-835-S	Unit	10.270/EA	102.70
R1-SPARE	4	KEYSTONE	KT-LED9T8-24GC-835-S	Unit	10.270/EA	41.08
R2	2	KEYSTONE	LED-6123-UL-3-40K-BFR	Unit	35.946/EA	71.89
R2-SPARE	4	KEYSTONE	LED-6123-UL-3-40K-BFR	Unit	35.946/EA	143.78
R3	6	KEYSTONE	KT-LED18T8-48GC-835-S	Unit	10.757/EA	64.54
R3-SPARE	4	KEYSTONE	KT-LED18T8-48GC-835-S	Unit	10.757/EA	43.03



Project: Woodbury County LED Lighting Retrofit
Expiration 11/19/15

[Empty rounded rectangular box]

Type	Quantity	Vendor	Description	LOT #	Unit Price	Ext Price
T3	16	KEYSTONE	KT-LED9T8-24GC-835-S		Unit	10.270/EA 164.32
T3-SPARE	4	KEYSTONE	KT-LED9T8-24GC-835-S		Unit	10.270/EA 41.08
T3-BALLAST	16	Stock	OSR 49969 OSR QHE-2X32T8-UNV-ISN-SC-B		Unit	10.586/EA 169.38
T4	26	KEYSTONE	KT-LED18T8-48GC-835-S		Unit	10.757/EA 279.68
T4-SPARE	4	KEYSTONE	KT-LED18T8-48GC-835-S		Unit	10.757/EA 43.03

Subtotal of BID PACKAGE 4 - EVOKIT/KEYSTONE 79,417.37

From:
ECHO ELECTRIC SUPPLY * BR 34 *
OFFICE 712-252-3251
1200 CUNNINGHAM DRIVE
PO BOX 1767
SIOUX CITY, IA 51106
Printed By: Stephanie VonHaden 34

Notes

WOODBURY COUNTY BOARD OF SUPERVISORS AGENDA ITEM(S)



Date: October 29, 2015

Weekly Agenda Date: November 3, 2015

DEPARTMENT HEAD / CITIZEN: Mark J. Nahra P.E. Secondary Roads Dept Head

SUBJECT: **Consideration of approval of contract for project PCC Patching 2015**

ACTION REQUIRED:

Approve Ordinance

Approve Resolution

Approve Motion

Give Direction

Other: Informational

Attachments

Consideration X

WORDING FOR AGENDA ITEM: Consideration of approval of the contract for project PCC Patching 2015.

EXECUTIVE SUMMARY: Bids for the project were received on October 13, 2015. The county awarded the project to the low bidder, Ten Point Construction Company of Denison, IA at the same meeting. The signed contracts have been returned with a bond and a certificate of insurance for the Board approval.

BACKGROUND: This project will replace a bridge with major structural defects with a precast concrete box culvert.

FINANCIAL IMPACT: This project is funded from county secondary road funds.

RECOMMENDATION: Recommend that the Board approve the contract with Ten Point Construction Company.

ACTION REQUIRED/MOTION PROPOSED: Motion to approve the contract for project PCC Patching 2015 with Ten Point Construction Company for \$94,650.

Approved by Board of Supervisors March 3, 2015.

CONTRACT

Kind of Work P.C.C. Patching at various locations in Woodbury County Miles _____

Project No. P.C.C. Patching 2015 County Woodbury

THIS AGREEMENT made and entered by and between Woodbury County, Iowa, by its Board of Supervisors consisting of the following members: Mark Monson, Larry Clausen, Matthew Ung, Jaclyn Smith, and Jeremy Taylor, Contracting Authority, and

Ten Point Construction Company of Denison, Iowa, Contractor.

WITNESSETH: That the Contractor, for and in consideration of _____
Nintey Four Thousand Six Hundred Fifty and 00/100 (\$94,650.00)

payable as set forth in the specifications constituting a part of this contract, hereby agrees to construct in accordance with the plans and specifications therefore, and in the locations designated in the notice to bidders, the various items of work as follows:

Item No.	Item	Quantity	Unit Price	Amount
PCC Patching at various locations in Woodbury County		Group 1		
1.	Saw/Remove 800 SY PCC Replace with 800 SY 8" M-4 PCC	800.00 S.Y.	\$ 101.00	\$80,800.00
2.	Class 10 removal 147 SY PCC Replace with 147 SY 8" M-4 PCC	27.00 S.Y.	\$ 110.00	\$2,970.00
3.	Patch by Count	34 Each	\$ 70.00	\$2,380.00
4.	Mobilization	1 Lump Sum	\$ 4,000.00	\$4,000.00
5.	Traffic Control	1 Lump Sum	\$ 4,500.00	\$2,500.00
TOTAL BID				\$94,650.00

Said specifications and plans are hereby made part of and the basis of this agreement, and a true copy of said plans and specifications are now on file in the office of the County Engineer under date of September 30, 2015

That in consideration of the foregoing, the Contracting Authority hereby agrees to pay the Contractor, promptly and according to the requirements of the specifications the amounts set forth, subject to the conditions as set forth in the specifications.

That it is mutually understood and agreed by the parties hereto that the notice to bidders, the proposal, the specifications for Project No. PCC Patching 2015 in Woodbury County, Iowa, the within contract, the contractor's bond, and the general and detailed plans are and constitute the basis of contract between the parties hereto.

That it is further understood and agreed by the parties of this contract that the above work shall be commenced and completed on or before:

Approximate Starting Date	Specified Starting Date	Late Start Date	Number of Working Days
		November 02, 2015	24

That time is the essence of this contract and that said contract contains all of the terms and conditions agreed upon by the parties hereto.

It is further understood that the Contractor consents to the jurisdiction of the courts of Iowa to hear, determine, and render judgment as to any controversy arising hereunder.

IN WITNESS WHEREOF the parties hereto have set their hands for the purposes herein expressed to this and three other instruments of like tenor, as the _____ day of _____, 2015.

Contractor: Ten Point Construction Co.

Contracting Authority: Woodbury County, Iowa

By Deborah Weman V.P.

By _____
Mark Monson Chairman

Date 10-19-15

Date _____

IOWADOT

CONTRACTOR'S PERFORMANCE BOND

Bond Number: 929614286

Contract I.D.: P.C.C. Patching 2015

County: Woodbury

KNOW ALL PERSONS BY THESE PRESENTS: That we, Ten Point Construction Co Inc

of Denison, IA (hereinafter called the Principal) and Western Surety Company

of Sioux Falls, South Dakota (hereinafter called the Surety) are held and firmly bound unto the

Woodbury County (hereinafter called the Contracting Authority) Iowa, in the penal sum*
(Iowa DOT, County, or City name, etc.)

of Ninety Four Thousand Six Hundred Fifty Dollars & 00/100-- dollars (\$ 94,650.00)

lawful money of the United States, to the payment of which sum, well and truly to be made, we bind ourselves, our executors, administrators, successors, and assigns jointly and severally by these presents.

THE CONDITION OF THIS OBLIGATION IS SUCH, THAT whereas the above bounden Principal did on

the _____ day of _____, _____ enter into a written contract with the Contracting Authority to perform
P.C.C. Patching 2015

work per the terms and specifications of the contract

Copy of which contract, together with all of its terms, covenants, conditions, and stipulations, is incorporated herein and made a part hereof as fully and completely as if said contract were recited at length; and whereas, the principal and sureties on this bond hereby agree to pay all persons, firms, or corporations having contracts directly with the principal or with subcontractors, all just claims due them for labor performed or materials furnished, in the performance of the contract on account of which this bond is given, when the same are not satisfied out of the portion of the contract price which the public corporation is required to retain until completion of the public improvements, but the principal and sureties shall not be liable to said persons, firms, or corporations unless the claims of said claimants against said portion of the contract price shall have been established as provided by law.

Now, if the principal shall in all respects fulfill his said contract according to the terms and tenor thereof, and shall satisfy all claims and demands incurred for the same, and shall fully indemnify and save harmless the Contracting Authority from all costs and damages which it may suffer by reason of failure to do so and shall fully reimburse and repay the Contracting Authority all outlays and expense which it may incur in making good any such default, then the obligation is to be void and of no effect; otherwise to remain in full force and effect. Every surety on this bond shall be deemed and held, any contract to the contrary notwithstanding, to consent without notice:

1. To any extension of time to the contractor in which to perform the contract.
2. The the bond shall remain in full force and effect until the contract is completed within the specified contract period, within an extension thereof, or within a period of time after the contract period has elapsed and the liquidated damage penalty is being charged against the contractor.
3. To any change in the plans, specifications, or contract, when such change does not involve an increase of more than 20 percent of the total contract price, and shall then be released only as to such excess increase.
4. That no provision of this bond or of any other contract shall be valid which limits to less than five years from the completion of the contract the right to sue on this bond for defects in work quality or material not discovered or known to the Contracting Authority at the time such work is accepted.

This bond is to be considered a performance bond and secures the Contracting Authority the right to recover from the contractor on account of material or labor entered into the work or work performed not in accordance with the contract, specifications, or plans. The contractor does not by this obligation guarantee to maintain the work for five years.

IN WITNESS WHEREOF, we have hereunto set our hands and seals this _____ day of _____, _____

By: _____ Principal
Ten Point Construction Co Inc

By: [Signature] Principal
KR Buck
President
Title

By: _____ Surety
Western Surety Company

By: [Signature] Surety
Jill Shaffer, Attorney-in-Fact
Title

Address: _____ Address: 4200 University Ave #200, West Des Moines IA 50266

For contracts where a County Board of Supervisors is the Contracting Authority:

This bond approved by the _____ County, this _____ day of _____
(Board of Supervisors of)

Chairperson (Signature)

For contracts where the DOT nor a County Board of Supervisors is the Contracting Authority:

This bond approved by the _____, this _____ day of _____
(Contracting Authority)

Title/Signature

DISCLOSURE STATEMENT FOR CONTRACTOR'S PERFORMANCE BONDS

The information requested will be used by the Iowa Department of Transportation to determine if a contractor/vendor is bonded in accord with the requirements established by the contracting authority. This secures the IDOT and/or the State of Iowa the right to recover from the contractor/vendor if material or labor entered into the work performed is not in accord with the contract, specifications, or plans. Persons outside the Department may occasionally request this information. Failure to provide all required information will result in denial of the award of the contract.

Western Surety Company

POWER OF ATTORNEY APPOINTING INDIVIDUAL ATTORNEY-IN-FACT

Know All Men By These Presents, That WESTERN SURETY COMPANY, a South Dakota corporation, is a duly organized and existing corporation having its principal office in the City of Sioux Falls, and State of South Dakota, and that it does by virtue of the signature and seal herein affixed hereby make, constitute and appoint

Mark E Keairnes, F Melvyn Hrubetz, Greg T LaMair, Nancy D Baltutat, Patrick K Duff, Jeffrey R Baker, Jill Shaffer, Joseph I Schmit, Individually

of West Des Moines, IA, its true and lawful Attorney(s)-in-Fact with full power and authority hereby conferred to sign, seal and execute for and on its behalf bonds, undertakings and other obligatory instruments of similar nature – In Unlimited Amounts – this power will remain in full force and in effect until written notification is received - and to bind it thereby as fully and to the same extent as if such instruments were signed by a duly authorized officer of the corporation and all the acts of said Attorney, pursuant to the authority hereby given, are hereby ratified and confirmed.

This Power of Attorney is made and executed pursuant to and by authority of the By-Law printed on the reverse hereof, duly adopted, as indicated, by the shareholders of the corporation.

In Witness Whereof, WESTERN SURETY COMPANY has caused these presents to be signed by its Vice President and its corporate seal to be hereto affixed on this 5th day of July, 2013.



WESTERN SURETY COMPANY

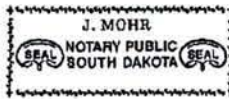
Paul T. Bruflat
Paul T. Bruflat, Vice President

State of South Dakota }
County of Minnehaha } ss

On this 5th day of July, 2013, before me personally came Paul T. Bruflat, to me known, who, being by me duly sworn, did depose and say: that he resides in the City of Sioux Falls, State of South Dakota; that he is the Vice President of WESTERN SURETY COMPANY described in and which executed the above instrument; that he knows the seal of said corporation; that the seal affixed to the said instrument is such corporate seal; that it was so affixed pursuant to authority given by the Board of Directors of said corporation and that he signed his name thereto pursuant to like authority, and acknowledges same to be the act and deed of said corporation.

My commission expires

June 23, 2015



J. Mohr
J. Mohr, Notary Public

CERTIFICATE

I, L. Nelson, Assistant Secretary of WESTERN SURETY COMPANY do hereby certify that the Power of Attorney hereinabove set forth is still in force, and further certify that the By-Law of the corporation printed on the reverse hereof is still in force. In testimony whereof I have hereunto subscribed my name and affixed the seal of the said corporation this _____ day of _____, _____.



WESTERN SURETY COMPANY

L. Nelson
L. Nelson, Assistant Secretary

#146

WOODBURY COUNTY BOARD OF SUPERVISORS AGENDA ITEM(S) RE

Date: October 22, 2015

Weekly Agenda Date: ~~October 27, 2015~~ November 3, 2015

DEPARTMENT HEAD / CITIZEN: Mark J. Nahra P.E. Secondary Roads Dept Head

SUBJECT: **Consideration of permit for overhead or underground utilities in the Highway Right of Way.**

ACTION REQUIRED:

Approve Ordinance

Approve Resolution

Approve Motion

Give Direction

Other: Informational

Attachments

Consideration X

WORDING FOR AGENDA ITEM: Consideration of permit for installation of underground water line within the Highway Right of Way for Northwest Environmental Services on Deer Run Trail.

EXECUTIVE SUMMARY: Permittee working within right of way on a utility project.

BACKGROUND: Work in the county ROW requires a permit from the Board of Supervisors per section 318.8 of the Code of Iowa.

FINANCIAL IMPACT: None

RECOMMENDATION: Recommend approval of application.

ACTION REQUIRED/PROPOSED MOTION: Motion to approve permit to work in Highway Right of Way to place underground utilities for Northwest Environmental Services.

Approved by Board of Supervisors March 3, 2015.

PERMIT FOR USE OF COUNTY ROAD/HIGHWAY RIGHT-OF-WAY FOR OVERHEAD AND/OR BURIED UTILITIES ACCOMMODATION

REQUEST BY APPLICANT:

Name Northwest Environmental Services Highway 254
 Address P.O. Box 401, Alton IA 51003 Township West Fork
 City of Climburg Hill
 Office Phone 712-756-4732 Local Phone 712-360-0971 Section: NW 1/4 of NW 1/4 Sec 21
 Type of Utility Installation 4-inch water main T 87 N, R 45 W
 Plans Prepared By Dan Ruppert Copy Enclosed Yes No
 Map Showing Location Enclosed Yes No
 Utility Location is _____ cross right-of-way _____ parallel to right-of-way
 _____ overhead _____ underground
 Proposed Method of Installation
 _____ tunnel _____ suspend on poles _____ cased
 _____ jack & bore _____ suspend on towers trench
 _____ open cut _____ plow
 Estimated Starting Date Authorization 9-18-15 Estimated Restoration Date Completion 10-26-15

The Applicant understands and agrees that the permitted work shall comply with all permit provisions and conditions listed on the reverse side hereof, and special provisions listed below or attached hereto, and any and all plans, details, or notes attached hereto and made a part thereof. Applicant is to complete in triplicate and send all copies including plans and maps to Woodbury County Engineer, 759 E. Frontage Road, Merville, IA 51039. One executed copy will be returned to the Applicant.

By [Signature] Title President
(Signature of Authorized Utility Representative) Date 9-1-15

PERMIT APPROVAL BY PERMITTING AUTHORITY

The foregoing application is hereby approved and permit issued by the Permitting Authority subject to full compliance by the Applicant with all provisions and conditions stated herein and on the reverse side hereof and all attachments hereto.

By _____ Title _____
(Signature of Woodbury County Board Chairman)

Date _____

By _____
(Signature of Woodbury County Engineer)

Title _____

Date _____

Other Special Provisions:

Permit Provisions and Conditions of Issuance

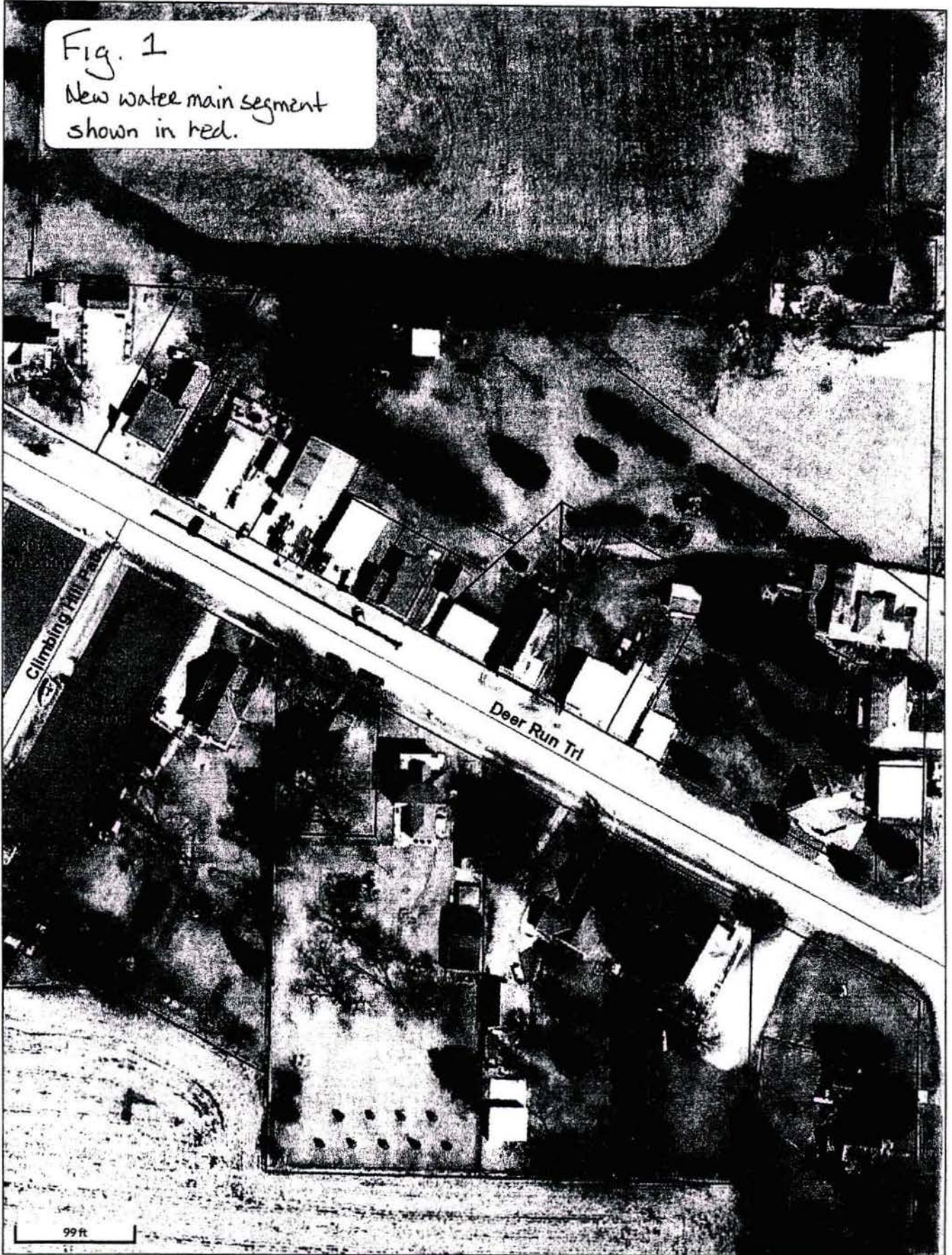
- The County and/or the County Board of Supervisors will not be charged with any responsibility for damages to the Applicant's property occasioned by any construction or maintenance operations on said county roads, including new or additional right-of-way acquired in connection therewith, subsequent to the building of the Applicant's facilities. The Board will endeavor to give the Applicant sufficient notice of any proposed construction or maintenance work, on either existing or newly acquired right-of-way that is likely to expose, cover up, or disturb any facilities belonging to the Applicant, in order that the Applicant may arrange to protect the facilities. The Board will inform contractors, and others working on the job of the location of the facilities so that reasonable care may be taken to avoid damaging the facilities, however the County and the Board of Supervisors will assume no responsibility for failure to give such notice.

2. The Applicant shall take all reasonable precaution during the construction of said facilities to protect and safeguard the lives and property of the adjacent property owners and the travelling public and shall save the County and the Board of Supervisors harmless of any damages or losses that may be sustained by adjacent property owners and the traveling public on account of such construction operations.
3. Operations in the construction and maintenance of said facilities shall be carried on in such a way as to not interfere with, or interrupt traffic on said roads. However, should the performance of work called for in this permit in any way interfere with or obstruct traffic on said roads, the Applicant shall provide the necessary flagmen as required by the Statutes when one-way traffic is involved and/or otherwise mark said work so as to protect the traveling public.
4. The Applicant shall hold the County and the Board of Supervisors harmless from any damages that may result to said highway because of the construction or maintenance of said facilities and shall reimburse the County or the Board of Supervisors for any expenditures that the County or the Board of Supervisors may have to make on said roads on account of replacement of surfacing gravel and bridge and culvert repairs.
5. Applicant shall lay, construct, operate and maintain said facilities so as not to interfere with natural drainage of the road and so as not to interfere with the construction or maintenance of said roads. When buried cable or wire lines are to be placed lengthwise with the roadway, they shall be placed in the County road shoulder or ditch near the toe of the fore-slope and parallel to centerline of roadbed at a depth of three (3) to four (4) feet by using specially designed plows or by trenching, whichever is appropriate. Plow slots and trenches shall be repacked as necessary to restore the disturbed area to its original condition. For buried line crossings of roadways not paved, an open trench may be dug and the lines placed therein, and the trench back-filled over the lines. Buried line crossings on paved roadways, lines may be placed through the sub-grade by jacking, or by boring a hole just large enough to take the lines; or if the County Engineer approves, a tunnel may be dug through and the cable or wire lines placed therein. All backfill of tunnels and trenches shall be thoroughly compacted in layers of 6" or less in depth. Back-filling of trenches within the right-of-way by not under the traveled roadway shall be tamped sufficiently to avoid settlement. When crossing an existing roadway, all buried facilities shall be placed a minimum of three (3) to four (4) below the bottom of the existing adjacent ditches. Overhead lines, where practical, shall be placed adjacent to and with two (2) feet of the Road/Highway Right-of-Way Line.
6. The Applicant will at any time subsequent to placing the facilities, and at the Applicant's expense, relay, replace, alter, change, reconstruct, or relocate its overhead and/or buried facilities and appurtenances thereto as may become necessary to conform to new grades, alignment, or widening right-of-way, resulting from maintenance or construction operations by the County Board of Supervisors irrespective of whether or not additional right-of-way is acquired in connection with such road improvements. The Applicant agrees to do this within ninety (90) days written notice from the Board of Supervisors, and without cost to the County. If the Applicant is unable to comply within said ninety (90) days, the Board of Supervisors may cause the work to be done and the Applicant will pay the cost thereof upon receipt of statement.
7. All work shall be done in a workmanlike manner; the surrounding ground, slopes, and ditch bottoms shall be reshaped to conform to the area and left in a neat condition satisfactory to the County Engineer. All areas where sod has been damaged or destroyed shall be re-seeded.
8. The Applicant shall notify the County Board of Supervisors at least forty-eight (48) hours in advance of the Applicant's intention of starting work covered by this permit on the road right-of-way. Said notice shall be in writing to the County Engineer.
9. Applicant, its' successors, grantees and assigns shall and hereby agrees to assume all responsibility, risks and liabilities for all accidents and damages that may occur to persons and/or property on account of the work done under this permit, and to this end, indemnify and hold the County and all authorized representatives thereof harmless from any and all claims, damages, losses, and expense including judgements, costs and including attorney's fees, for personal injuries (including death) or property damage arising or resulting from the activities of the Applicant in connection herewith, now and at all times in the future.
10. It is understood that this permit is issued only insofar as Woodbury County has jurisdiction and does not presume to release the Applicant from fulfilling any existing statutes relating to the installation, construction and operation of said facilities.
11. It is further understood that the facilities covered by this permit shall be constructed or installed within one (1) year after the date of approval of this permit, unless otherwise extended in writing by Woodbury County.
12. Engagement in the operations as herein applied for by the Applicant shall be considered and constitute an acceptance of all the terms and conditions herein set forth.

Approved 1/19/99

Fig. 1

New water main segment
shown in red.



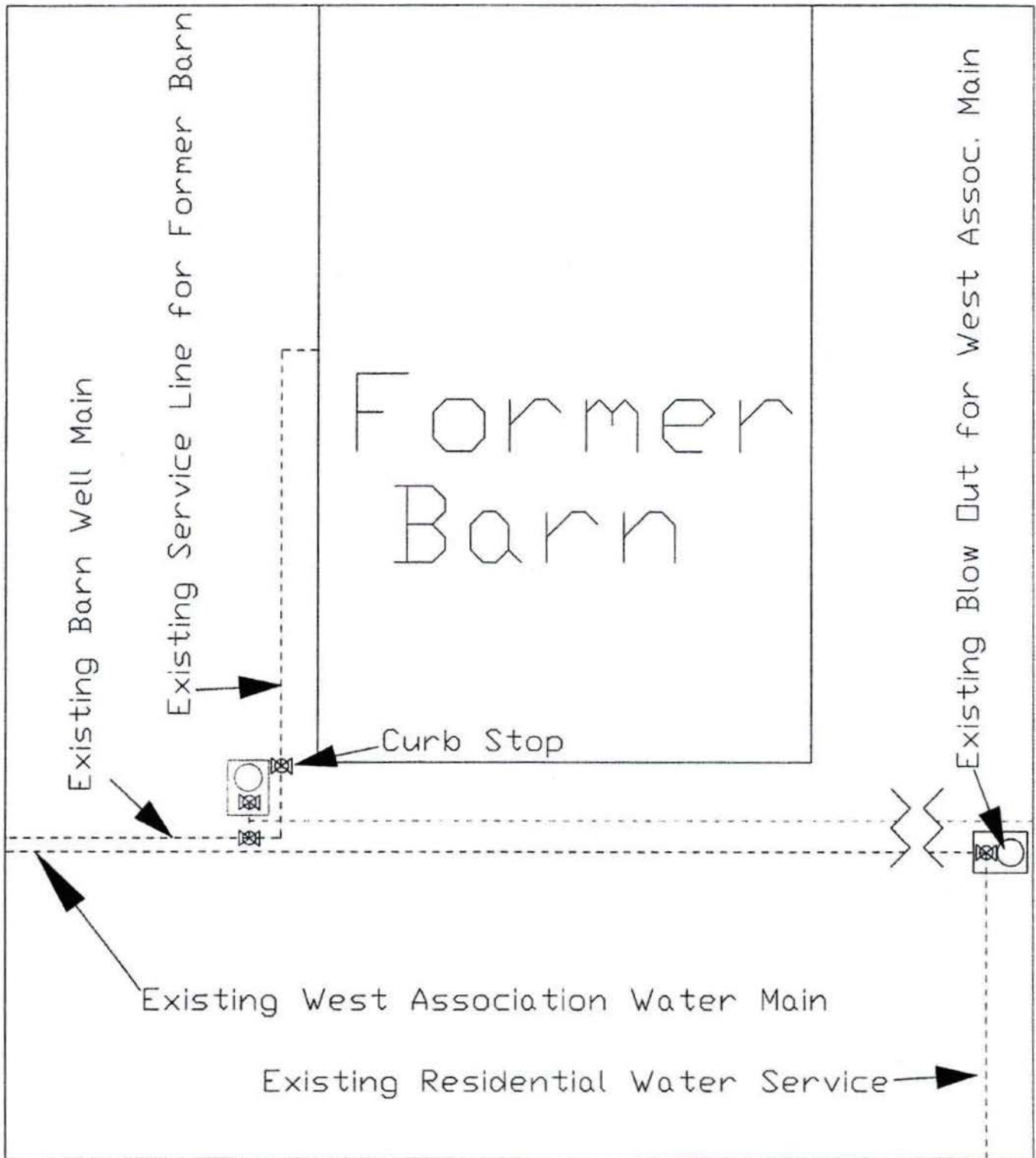


Figure 2A. Generalized Water Main Diagram at Former Barn (77 Deer Run Trail) Climbing Hill, IA

Proposed New Construction Shown in Red
 Not to Scale and Not Intended to Show Exact Locations

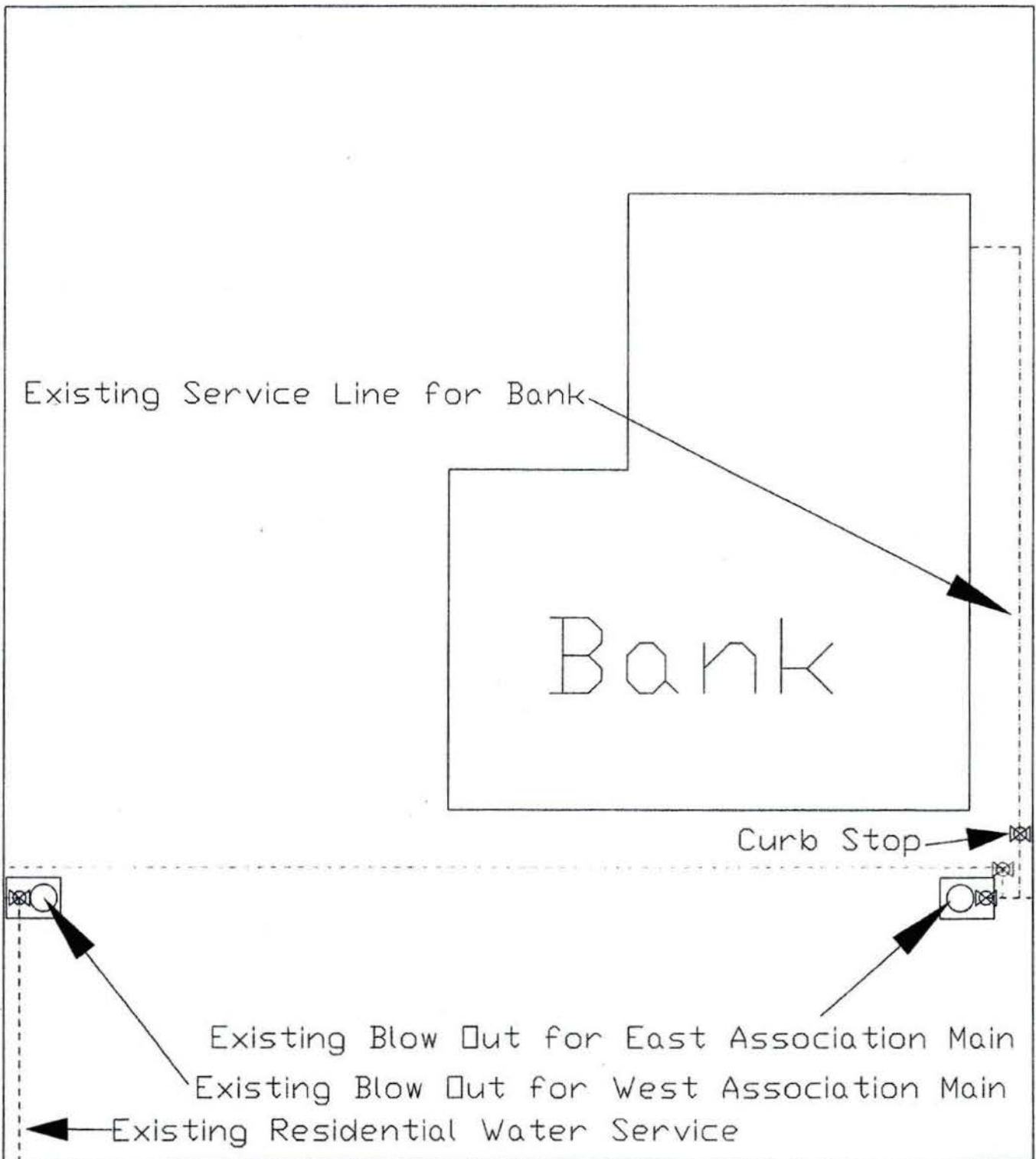
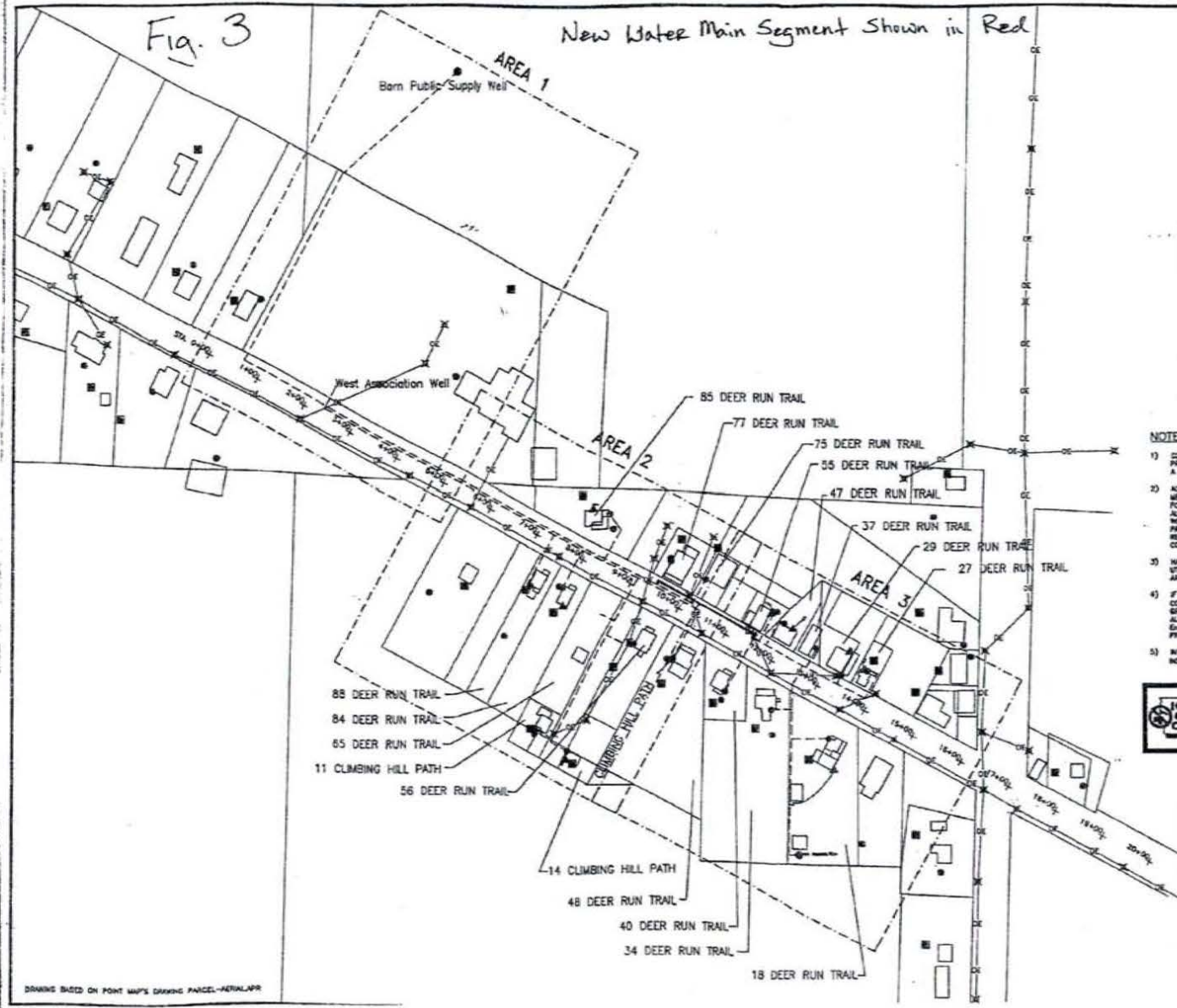


Figure 2B. Generalized Water Main Diagram at Bank (55 Deer Run Trail) Climbing Hill, IA

Proposed New Construction Shown in Red
 Not to Scale and Not Intended to Show Exact Locations

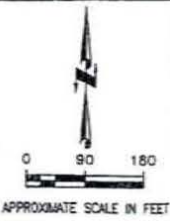
Fig. 3

New Water Main Segment Shown in Red



LEGEND

- = APPROXIMATE SUPPLY WELL LOCATION
- = APPROXIMATE WATER SUPPLY ENTRANCE
- = APPROXIMATE SEPTIC LOCATION
- ▲ = APPROXIMATE LIQUID PROPANE HOUSE ENTRANCE
- = APPROXIMATE LIQUID PROPANE TANK
- = APPROXIMATE PARCEL BOUNDARY
- = APPROXIMATE BUILDING
- = APPROXIMATE STATION MARKERS
- x = UTILITY POLE
- = ELECTRICAL VAULT
- = OVERHEAD ELECTRICAL LINE
- *- = UNDERGROUND ELECTRICAL LINE



NOTE:

- 1) CONTACT IOWA ONE-CALL AT LEAST 72 HOURS PRIOR TO BEGINNING WORK AT SITE TO SCHEDULE A UTILITY LOCATE.
- 2) ADDITIONAL UNDERGROUND ELECTRICAL AND/OR MECHANICAL UTILITIES MAY EXIST IN AREA SHOWN FOR SITE WORK. CONTRACTOR SHALL FIELD VERIFY ALL EXISTING CONDITIONS PRIOR TO COMMENCING WORK AND EXERCISE CARE DURING EXCAVATION TO PREVENT DAMAGE. UTILITIES SHOWN MAY NOT REPRESENT THE FULL EXTENT OF EXISTING CONDITIONS.
- 3) HAND EXCAVATE IN AREAS OF UNDERGROUND UTILITIES EXERCISE EXTREME CAUTION IN THESE AREAS.
- 4) IF AT ANY TIME DURING CONSTRUCTION THE CONTRACTOR ENCOUNTERS SOIL AND/OR ROCKS/ROOTS THAT MAY BE COORDINATED STOP ALL WORK IMMEDIATELY AND CONTACT THE ON-SITE SUPERVISOR PERSONNEL OR CALL THE EnecoTech PROJECT MANAGER @ 1-800-292-8989.
- 5) IN THE DOCUMENTS "PROVIDE" MEANS "FURNISH & INSTALL".

72hrs BEFORE YOU DIG CALL

IOWA ONE CALL
 1-800-292-8989
 Notification service for locating underground

DISCLAIMER
 THE INFORMATION CONTAINED HEREIN IS FOR INFORMATIONAL PURPOSES ONLY AND IS NOT TO BE USED AS A BASIS FOR ANY DESIGN OR CONSTRUCTION. THE ENGINEER ASSUMES NO LIABILITY FOR ANY DAMAGE, LOSS, OR INJURY RESULTING FROM THE USE OF THIS INFORMATION. THE ENGINEER'S RESPONSIBILITY IS LIMITED TO THE DESIGN AND CONSTRUCTION OF THE PROJECT SHOWN ON THIS MAP. THE ENGINEER DOES NOT WARRANT THE ACCURACY OF ANY UTILITIES SHOWN ON THIS MAP. THE CONTRACTOR SHALL VERIFY ALL UTILITIES PRIOR TO CONSTRUCTION. THE ENGINEER'S LIABILITY IS LIMITED TO THE DESIGN AND CONSTRUCTION OF THE PROJECT SHOWN ON THIS MAP. THE ENGINEER DOES NOT WARRANT THE ACCURACY OF ANY UTILITIES SHOWN ON THIS MAP. THE CONTRACTOR SHALL VERIFY ALL UTILITIES PRIOR TO CONSTRUCTION.

10/28/03 REQUEST FOR BIDS

EnecoTech
 ENVIRONMENTAL CONSULTANTS

SITE MAP WITH KNOWN UTILITIES

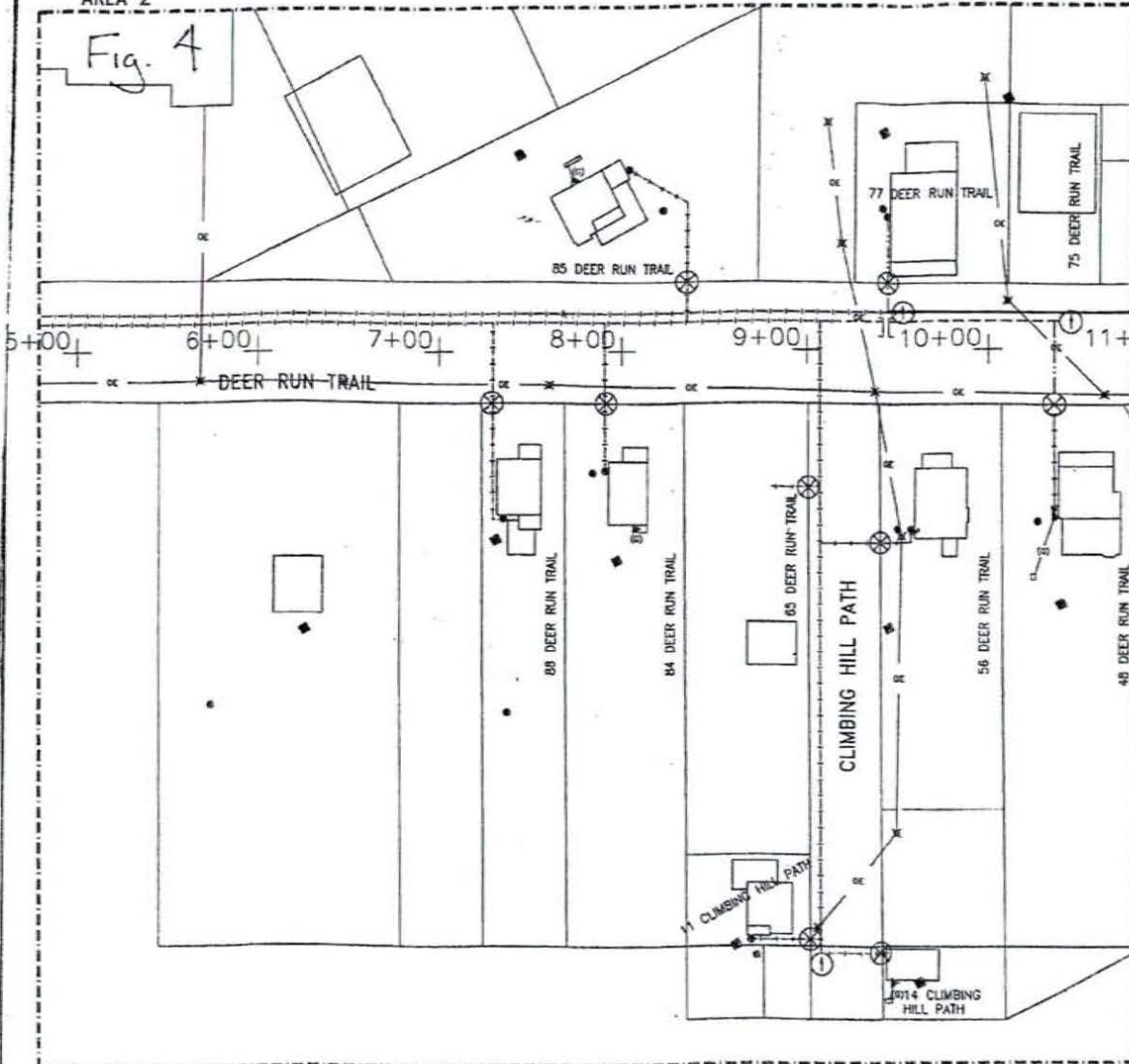
FORMER BENJAMIN GASOLINE STATION
 DEER RUN TRAIL, CLIMBING HILL, IOWA

DESIGN NO.	1336a-001	DESIGNED BY	SGE	CHECKED BY	SGE	DATE	11/1/03	SCALE	AS SHOWN
DRAWING NO.	1336a001SD	ISSUED BY	KAT	DATE	8/28/03	BY	11/1/03	NO.	50

DRAWING BASED ON POINT MAP'S DRAWING PARCEL-AERIALAPP

AREA 2

Fig. 4



New water main segment shown in red.

LEGEND

- = APPROXIMATE SUPPLY WELL LOCATION
- = APPROXIMATE SEPTIC LOCATION
- ▲ = APPROXIMATE LIQUID PROPANE HOUSE ENTRANCE
- = APPROXIMATE LIQUID PROPANE TANK
- = APPROXIMATE PARCEL BOUNDARY
- = APPROXIMATE BUILDING
- ⊗ = APPROXIMATE STATION MARKERS
- = 3" PVC PIPE (SDR-21) OR 3" (SDR-11) POLYETHYLENE PIPE
- - - = 3" DUCTILE IRON PIPE
- - - - - = UNDERGROUND PROPANE LINES
- = 1" COPPER (TYPE K)
- - - - - = 1 1/4" CTS POLYETHYLENE (SDR-9)
- - - - - = 1 1/4" COPPER (TYPE K)
- - - - - = 1 1/2" CTS POLYETHYLENE (SDR-9)
- [] = PVC/POLYETHYLENE TO DIP TRANSITION
- ⊗ = CURB STOP LOCATION
- ⊗ = UTILITY POLE
- ⊗ = ELECTRICAL VAULT
- = OVERHEAD ELECTRICAL LINE
- ① = TEMPORARY WATER MAIN DISCHARGE

NOTES

- 1) TRACING WIRE TO BE UTILIZED IN INSTALLATION OF PVC PORTION OF PIPING SYSTEM. PROVIDE GROUND SURFACE MARKER AT WELL HEAD FOR TERMINATION OF TRACE WIRE.
- 2) ALL DUCTILE IRON PIPE TO BE ENCASED IN POLY WRAP PER SPECIFICATIONS.
- 3) WATER MAIN TO BE SECURED WITH "E-RODS" ("WEGA-LOGGED") AS REQUIRED FOR SPECIFICATIONS. CONCRETE THRUST BLOCKING IS NOT ALLOWABLE IN THIS INSTALLATION.
- 4) CONTACT ENR ONE-CALL AT LEAST 72 HOURS PRIOR TO BEGINNING WORK AT SITE TO SCHEDULE A UTILITY LOCATE.
- 5) ADDITIONAL UNDERGROUND ELECTRICAL AND/OR MECHANICAL UTILITIES MAY EXIST IN AREA SHOWN FOR SITE WORK. CONTRACTOR SHALL FIELD VERIFY ALL EXISTING CONDITIONS PRIOR TO COMMENCING WORK AND EXERCISE CARE DURING EXCAVATION TO PREVENT DAMAGE. UTILITIES SHOWN MAY NOT REPRESENT THE FULL EXTENT OF EXISTING CONDITIONS.
- 6) HAND EXCAVATE IN AREAS OF UNDERGROUND UTILITIES. EXERCISE EXTREME CAUTION IN THESE AREAS.
- 7) IF AT ANY TIME DURING CONSTRUCTION THE CONTRACTOR ENCOUNTERS SOIL AND/OR GROUNDWATER THAT MAY BE CONTAMINATED, STOP ALL WORK IMMEDIATELY AND CONTACT THE ON-SITE ENR/ENR/ENR PERSONNEL OR CALL THE ENR/ENR/ENR PROJECT MANAGER @ 1-800-735-1077.
- 8) IN THE DOCUMENTS, "PHONE" MEANS "TURNISH & INSTALL".
- 9) TEMPORARY WATER MAIN DISCHARGE TO BE INSTALLED TO FACILITATE PRESSURE TESTING AND PURGING OF DISJECTING SOLUTION. MAINTAIN CONNECTION UNTIL DIRECTED BY ENGINEER TO REMOVE.

OLD INDEMNIFICATION CLAUSE
 The knowledge prepared by the Engineer for this project are intended for the Engineer's services for use solely on the project. During Project's execution, the Engineer may provide copies of the drawings to other parties for the purpose of providing information. These drawings shall not be used for other projects, for purposes in the Project, or for completion of the Project or other, and shall not be used in any way that would constitute a violation of the Engineer's professional obligations. The Engineer shall not be held responsible for any damages, including such as resulting from the use of these drawings by any party other than the Engineer or any party who has been authorized by the Engineer at the time of reproduction and use.

EnecoTech
 ENVIRONMENTAL CONSULTANTS

PIPING AND TRENCH LAYOUT
 AREA 2

FORMER BENJAMIN GASOLINE STATION
 DEER RUN TRAIL, CLIMBING HILL, IOWA

10/29/03 PREPARED FOR ENR

1308a-001

82	Scott	1.07772688	\$3,924,435	1.13557006	\$1,176,678	\$102,923	\$387,874	\$49,651	\$5,769
83	Shelby	0.95410042	\$3,474,261	0.92376867	\$957,209	\$91,117	\$343,381	\$40,703	\$4,729
84	Sioux	1.56646084	\$5,704,111	1.50262602	\$1,557,021	\$149,597	\$563,769	\$12,409	\$1,442
85	Story	1.13830776	\$4,145,034	1.19059356	\$1,233,693	\$108,708	\$409,677	\$33,520	\$3,894
86	Tama	1.21785712	\$4,434,705	1.18388342	\$1,226,740	\$116,305	\$438,307	\$42,035	\$4,884
87	Taylor	0.82162649	\$2,991,871	0.82193453	\$851,689	\$78,465	\$295,703	\$25,779	\$2,995
88	Union	0.68319422	\$2,487,783	0.67112166	\$695,416	\$65,245	\$245,882	\$16,641	\$1,933
89	Van Buren	0.77545005	\$2,823,724	0.81281606	\$842,240	\$74,055	\$279,084	\$59,623	\$6,927
90	Wapello	0.85809648	\$3,124,673	0.92438355	\$957,846	\$81,948	\$308,829	\$23,784	\$2,763
91	Warren	1.20446753	\$4,385,948	1.29017604	\$1,336,880	\$115,027	\$433,488	\$50,435	\$5,860
92	Washington	1.00661882	\$3,665,502	1.12506922	\$1,165,797	\$96,132	\$362,282	\$16,867	\$1,960
93	Wayne	0.74061172	\$2,696,864	0.72687644	\$753,189	\$70,728	\$266,546	\$17,126	\$1,990
94	Webster	1.36312318	\$4,963,677	1.38372939	\$1,433,820	\$130,178	\$490,588	\$63,971	\$7,432
95	Winnebago	0.65357751	\$2,379,937	0.60260097	\$624,415	\$62,417	\$235,223	\$20,443	\$2,375
96	Winneshiek	1.28940990	\$4,695,257	1.25970490	\$1,305,306	\$123,139	\$464,059	\$51,419	\$5,974
97	Woodbury	1.55636230	\$5,667,338	1.48539957	\$1,539,171	\$148,633	\$560,135	\$56,813	\$6,601
98	Worth	0.68413422	\$2,491,206	0.67556593	\$700,022	\$65,335	\$246,220	\$55,650	\$6,466
99	Wright	0.93202542	\$3,393,877	0.79368716	\$822,419	\$89,008	\$335,436	\$6,712	\$780
Totals		100.00000000	\$364,140,000	100.00000000	\$103,620,000	\$9,550,000	\$35,990,000	\$3,119,043	\$362,380

Amounts in this column
contain T215 from Col. D

FM fund does not
receive T215

Direct allocation from
primary road fund

Supplemental info
included in Col. A

Amounts in this column
contain T215 from Col. F

Supplemental info
included in Col. D

FY16 RUTF Distribution Factors - FY17 Preliminary Estimates
 Based on FY16 factors applied to FY17 projected revenue (Time-21 contributions are in Col. E & F)

Prepared on: **9/21/2015**
 Prepared by: **ICEA Service Bureau**

ADVANCE ESTIMATE

FY 16 original	Secondary Road Fund allocation	Est. amount for FY15 -> \$363,380,000
projection	\$315.7M Reg (74.5%) & \$34.10 TIME-21 (20%) plus TJ \$9.58	

FM Road fund allocation	Est. amount for FY15 -> \$103,970,000
	8% of RUTF - no TIME-21

TJ Allocation	\$9,580,000
DOT funds to all counties	

TIME-21 Amounts	\$34,100,000
Included in Col. A	

FM xfr Allocation	\$3,112,534
-------------------	-------------

TIME-21 Amounts	\$361,621
Included in Col. F	

Col. A

Col. B

FY 17 advance estimate	Secondary Road Fund allocation	Est. amount for FY16 -> \$364,140,000
	\$318.6M Reg (24.5%) & \$35.99 TIME-21 (20%) plus TJ \$9.55	

FM Road fund allocation	Est. amount for FY16 -> \$103,620,000
	8% of RUTF - no TIME-21

TJ Allocation	\$9,550,000
DOT funds to all counties	

TIME-21 Amounts	\$35,990,000
Included in Col. A	

FM xfr Allocation	\$3,119,043
-------------------	-------------

TIME-21 Amounts	\$362,380
Included in Col. E	

INFORMATIONAL ITEM

INFORMATIONAL ITEM

Counties	Factors based on Sec. Rds data as of 1-1-15 and 2010 US Census	RUTF + TIME21 + TJ	Factors based on FM data as of 1-1-15 and 2010 US Census	RUTF
No Name	SRF Factor		FM Factor	
1 Adair	0.91346903	\$3,326,306	0.78509959	\$813,520
2 Adams	0.67162866	\$2,445,669	0.60553053	\$627,452
3 Allamakee	1.01095079	\$3,681,276	1.02237209	\$1,059,382
4 Appanoose	0.80715091	\$2,939,159	0.82114968	\$850,875
5 Audubon	0.72592993	\$2,643,401	0.69374556	\$718,859
6 Benton	1.37119823	\$4,993,081	1.31540637	\$1,363,024
7 Black Hawk	1.19471266	\$4,350,427	1.26132341	\$1,306,983
8 Boone	1.05325097	\$3,835,308	1.06356632	\$1,102,067
9 Bremer	0.88910368	\$3,237,582	0.83117263	\$861,261
10 Buchanan	1.15263964	\$4,197,222	1.17622517	\$1,218,805
11 Buena Vista	0.97302476	\$3,543,172	0.96213904	\$996,968
12 Butler	1.06140455	\$3,864,999	1.04211810	\$1,079,843
13 Calhoun	0.95664476	\$3,483,526	0.90417656	\$936,908
14 Carroll	1.01888643	\$3,710,173	1.00663223	\$1,043,072
15 Cass	0.88279807	\$3,214,621	0.78573801	\$814,182
16 Cedar	1.06462210	\$3,876,715	1.08892565	\$1,128,345
17 Cerro Gordo	1.05276607	\$3,833,542	1.05255052	\$1,090,653
18 Cherokee	0.97066157	\$3,534,567	0.94079578	\$974,853
19 Chickasaw	0.93471428	\$3,403,669	0.84862035	\$879,340
20 Clarke	0.62167020	\$2,263,752	0.61793343	\$640,304
21 Clay	0.98480495	\$3,586,069	0.96694645	\$1,001,950
22 Clayton	1.21822664	\$4,436,050	1.26922829	\$1,315,174
23 Clinton	1.23396339	\$4,493,354	1.22968068	\$1,274,195
24 Crawford	1.10940315	\$4,039,781	1.04266546	\$1,080,410
25 Dallas	1.10574628	\$4,026,465	1.14797262	\$1,189,529
26 Davis	0.82005946	\$2,986,165	0.82557028	\$855,456
27 Decatur	0.81300313	\$2,960,470	0.88905412	\$921,238
28 Delaware	1.11900047	\$4,074,728	1.10161825	\$1,141,497
29 Des Moines	0.80889324	\$2,945,504	0.87146601	\$903,013
30 Dickinson	0.71758442	\$2,613,012	0.69656095	\$721,776
31 Dubuque	1.38751743	\$5,052,506	1.47680039	\$1,530,261
32 Emmet	0.61974569	\$2,256,744	0.58811634	\$609,407
33 Fayette	1.24621266	\$4,537,959	1.19806157	\$1,241,431

Included in RUTF Col. A From IA DOT Transfer of Jurisdiction Fund	Estimated TIME-21 additional to Sec. Rd fund
\$87,236	\$328,758
\$64,142	\$241,720
\$96,546	\$363,841
\$77,083	\$290,494
\$69,326	\$261,262
\$130,949	\$493,494
\$114,095	\$429,977
\$100,585	\$379,065
\$84,909	\$319,988
\$110,077	\$414,835
\$92,924	\$350,192
\$101,364	\$381,999
\$91,360	\$344,296
\$97,304	\$366,697
\$84,307	\$317,719
\$101,671	\$383,157
\$100,539	\$378,891
\$92,698	\$349,341
\$89,265	\$336,404
\$59,370	\$223,740
\$94,049	\$354,431
\$116,341	\$438,440
\$117,844	\$444,103
\$105,948	\$399,274
\$105,599	\$397,958
\$78,316	\$295,139
\$77,642	\$292,600
\$106,865	\$402,728
\$77,249	\$291,121
\$68,529	\$258,259
\$132,508	\$499,368
\$59,187	\$223,046
\$119,013	\$448,512

Funds for FM extensions in cities with less than 500 population	Estimated TIME-21 additional to FMxtn TJ
\$16,276	\$1,891
\$8,907	\$1,035
\$11,968	\$1,390
\$50,869	\$5,910
\$12,990	\$1,509
\$16,674	\$1,937
\$0	\$0
\$25,533	\$2,966
\$6,217	\$722
\$37,292	\$4,333
\$19,538	\$2,270
\$11,607	\$1,348
\$27,603	\$3,207
\$76,313	\$8,866
\$26,122	\$3,035
\$6,451	\$749
\$53,561	\$6,223
\$17,244	\$2,003
\$49,535	\$5,755
\$4,716	\$548
\$40,237	\$4,675
\$72,590	\$8,434
\$67,073	\$7,793
\$48,158	\$5,595
\$34,644	\$4,025
\$21,448	\$2,492
\$29,009	\$3,370
\$42,424	\$4,929
\$7,500	\$871
\$9,353	\$1,087
\$102,911	\$11,957
\$20,016	\$2,326
\$68,871	\$8,002

WOODBURY COUNTY BOARD OF SUPERVISORS AGENDA ITEM(S) RESOLUTION



Date: October 29, 2015

Weekly Agenda Date: November 3, 2015

DEPARTMENT HEAD / CITIZEN: Mark J. Nahra, P.E., Secondary Roads Dept Head

SUBJECT: **Consider Resolution to establish a stop sign at the intersection of CF Industries Drive and 255th Street**

ACTION REQUIRED:

Approve Ordinance

Approve Resolution

Approve Motion

Give Direction

Other: Informational

Attachments

WORDING FOR AGENDA ITEM: Consider Resolution to establish a stop sign at the intersection of CF Industries Drive and 255th Street.

EXECUTIVE SUMMARY: With the completion and opening of CF Industries Drive, it is necessary to establish traffic control, in this case a stop sign, to protect through traffic on 255th Street.

BACKGROUND: Under the provisions of Section 321.255 and 321.236 (1C)(6) of the 2013 Code of Iowa, the Board of Supervisors and County Engineer are empowered to designate the location and erection of stop and yield signs. The permanent installation of these signs is recommended by the county engineer to improve intersection safety.

FINANCIAL IMPACT: Minimal impact to county budget. We have a line item for sign installation. The cost of the signs, posts and installation is about \$150 per sign.

RECOMMENDATION: Recommend approval of resolution.

ACTION REQUIRED/PROPOSED MOTION: Motion to approve the resolutions to establish a stop sign and a yield sign at the intersection of CF Industries Drive and 255th Street.

WOODBURY COUNTY, IOWA

RESOLUTION FOR THE ESTABLISHMENT OF A STOP SIGN
AT THE INTERSECTIONS OF 255th STREET AND CF INDUSTRIES DRIVE

RESOLUTION NO. _____

WHEREAS, under the provisions of Section 321.255 and 321.236 (1C)(6) of the 2013 Code of Iowa, the Board of Supervisors and County Engineer are empowered to designate the location and erection of stop signs,

AND WHEREAS, the County Board and County Engineer may designate certain roads as through roads with the erection of stop signs at specified locations furnishing access thereto or designation of any intersection as a stop intersection and erect like signs at one or more locations of access to such intersections.

AND WHEREAS, traffic through the intersection discussed herein has changed due to the completion and opening of CF Industries Drive resulting in a significant change to the volume of traffic at this location,

AND WHEREAS, there are currently no stop signs controlling traffic at the new intersection,

AND WHEREAS, with the increased level of traffic at the intersection of the new and current routes, it is deemed a safety hazard to allow the traffic to move without some control of traffic movement,

NOW THEREFORE BE IT RESOLVED, that the Board of Supervisors of Woodbury County on this 3rd day of November, 2015, recognize as official the location of a stop sign at the intersections described below:

1. Located at the intersection of 255th Street and CF Industries Drive, causing traffic travelling east on CF Industries Drive to come to a complete stop at the intersection.

Woodbury County Board of Supervisors

Mark Monson, Chairman

Recommended:

Larry Clausen, Member

Woodbury County Engineer

Jackie Smith, Member

Attest:

Jeremy Taylor, Member

Woodbury County Auditor

Matthew Ung, Member

#14d

WOODBURY COUNTY BOARD OF SUPERVISORS AGENDA ITEM(S) RESOLUTION

Date: October 29, 2015

Weekly Agenda Date: November 3, 2015

DEPARTMENT HEAD / CITIZEN: Mark J. Nahra, P.E., Secondary Roads Dept Head

SUBJECT: **Consider Resolution to establish a speed limit on CF Industries Drive**

ACTION REQUIRED:

Approve Ordinance

Approve Resolution

Approve Motion

Give Direction

Other: Informational

Attachments

WORDING FOR AGENDA ITEM: Consider Resolution to establish a Speed Limit on CF Industries Drive.

EXECUTIVE SUMMARY: With the completion and opening of CF Industries Drive, it is necessary to establish traffic control, in this case a speed limit to regulate traffic on the new roadway.

BACKGROUND: The Board of Supervisors of Woodbury County is empowered under the authority of sections 321.255 and 321.285, subsection 4 of the Code of Iowa to determine upon the basis of an engineering and traffic investigation conducted by the County Engineer that the speed limit of any secondary road is greater than is reasonable and proper under the conditions existing, and may determine and declare a reasonable and proper speed limit. The county engineer has completed a study of CF Industries Drive and recommends a speed limit of 35 mph for the public portion of the new road.

FINANCIAL IMPACT: Minimal impact to county budget. We have a line item for sign installation. The cost of the signs, posts and installation is about \$150 per sign.

RECOMMENDATION: Recommend approval of resolution.

ACTION REQUIRED/PROPOSED MOTION: Motion to approve the resolutions to establish a 35 mph speed limit on CF Industries Drive.

WOODBURY COUNTY, IOWA

SPEED LIMIT RESOLUTION FOR CF INDUSTRIES DRIVE

RESOLUTION NO. _____

WHEREAS: The Board of Supervisors of Woodbury County is empowered under the authority of sections 321.255 and 321.285, subsection 4 of the Code of Iowa to determine upon the basis of an engineering and traffic investigation conducted by the County Engineer that the speed limit of any secondary road is greater than is reasonable and proper under the conditions existing, and may determine and declare a reasonable and proper speed limit, and

WHEREAS: Such investigation has been requested and completed and the county engineer has reached an opinion concerning the reasonable and proper speed for the road listed herein,

NOW, THEREFORE BE IT RESOLVED, by the Woodbury County Board of Supervisors that the following speed limit be established and appropriate signs erected at the location described as follows:

- 1) Beginning at the intersection of 255th Street and CF Industries Drive then proceeding west on CF Industries Drive to the entrance of the CF Industries north plant gate, a speed limit of 35 miles per hour is established.

Speed limit shall be effective when appropriate signs giving notice of the speed limits are erected.

Passed and approved this 3rd day of November, 2015 by the Woodbury County Board of Supervisors.

Mark Monson, Chairperson

Larry Clausen, Member

Jackie Smith, Member

Jeremy Taylor, Member

Matthew Ung, Member

Recommended:

ATTEST:

Mark Nahra, Woodbury County Engineer

Patrick Gill, Woodbury County Auditor



WOODBURY COUNTY BOARD OF SUPERVISORS AGENDA ITEM(S) RE

Date: October 29, 2015

Weekly Agenda Date: November 3, 2015

DEPARTMENT HEAD / CITIZEN: Mark J. Nahra P.E. Secondary Roads Dept Head

SUBJECT: **Review of Proposed Ordinance for Road and Bridge Standards**

ACTION REQUIRED:

Approve Ordinance

Approve Resolution

Approve Motion

Give Direction

Other: Informational

Attachments

Information only

WORDING FOR AGENDA ITEM: Preliminary review of County Policy for Construction and Reconstruction of Roadways and Bridges on the Woodbury County Road system.

EXECUTIVE SUMMARY: During storm events, existing roads, pavements, culverts, and bridges are sometimes destroyed and replacement of the damaged infrastructure is required. In the case of bridges and culverts in particular, it makes little sense to replace a hydraulically undersized bridge with another bridge of the same size and configuration. It also is not cost effective to build a replacement structure that does not meet current standards for deck width or load carrying capacity.

FEMA standards only restore destroyed secondary road assets to pre-flood conditions. FEMA will allow bridges and culverts to be built to current design standards if the county has a written policy, approved by the Board of Supervisors, on record prior to a disaster event. In 1994, the county passed a resolution to replace all bridges with a new bridge that has a minimum 30' deck width. This resolution has been our governing policy since that date. Following the 2014 flood, FEMA has informed our office that for future upgraded replacement structures to be built, this policy must be in the form of an ordinance. A proposed ordinance is attached to this information sheet.

BACKGROUND: The secondary road department is reviewing all operating policies in cooperation with the Board of Supervisors. Prior to another disaster, the county needs to have this ordinance in place if we are to successfully be able to apply FEMA funds to replace destroyed county bridges and culverts to meet current design standards.

FINANCIAL IMPACT: These policies will affect future county construction work post disaster. County bridge, culvert, pavement, and road replacements are already built to this standard, but this ordinance assures that we will be able to use disaster aid to construct structures to the standards to which we otherwise build or replace county infrastructure. The county pays a minimum of 15% of the cost of repair/recovery costs of FEMA eligible disasters. Structures built to current standards tend to be more costly to construct than the smaller, obsolete structures they replace.

RECOMMENDATION: No recommendation at this time. The policy is presented for discussion and questions only.

ACTION REQUIRED/PROPOSED MOTION: Information and discussion only.

WOODBURY COUNTY

ORDINANCE NO. _____

AN ORDINANCE TO ESTABLISH A POLICY FOR THE CONSTRUCTION AND RECONSTRUCTION OF ROADWAYS AND BRIDGES ON THE WOODBURY COUNTY SECONDARY ROAD SYSTEM.

BE IT ORDAINED BY THE BOARD OF SUPERVISORS WOODBURY COUNTY:

SECTION 1 -- PURPOSE

The purpose of this ordinance is to establish Woodbury County's policy for the construction of roads, reconstruction of roads, construction of bridges, reconstruction of bridges and other roadway and drainage features associated with road and bridge construction.

SECTION 2 -- LEVEL OF SERVICE

The level of service shall be based on traffic counts, pavement type, roadway geometrics and other data used in accepted engineering design as established by the County Engineer, Iowa Department of Transportation and the Federal Highway Administration.

SECTION 3 -- DESIGN CRITERIA

In implementation, this policy shall set the minimum design standards that Woodbury County will follow in the construction or reconstruction of roads and bridges. These criteria shall be based on accepted engineering practices and standards established by the Iowa Department of Transportation and the Federal Highway Administration.

The County Engineer shall assure the minimum design standards established herein are adhered to in a uniform manner unless, in his or her professional judgment, a deviation from standards is warranted. Minimum design standards are not subject to discretionary enforcement. Any deviations must be documented as unreasonable and or impossible to implement by the County Engineer and/or the County Board of Supervisors.

PAVED ROUTES

A) New Pavement

- 1) New pavement shall be constructed with a minimum 22' wide pavement and granular shoulders. Intersections with non-paved roads shall have pavement extended back onto the intersecting road 50' beyond

the end of the intersection radius. New pavements in designated commercial areas may be paved at 26' wide determined by the County Engineer and Board of Supervisors.

- 2) Paved shoulders and edge line rumble stripes shall be constructed if crash data warrants based on accepted HSIP and TSIP cost/benefit analysis.
- 3) Rumble strips shall be installed on all approach stop situations.
- 4) Concrete pavement will be the first choice for pavement provided clear zone and shoulder widths can be maintained by design requirements.

B) Reconstruction of Pavement

1. Paved roads shall be reconstructed with a 22' wide pavement or to the previous pavement width, whichever is greater with granular shoulders.
2. Rumble strips shall be installed on all approach stop situations.

UNPAVED ROADS

A) Gravel Roads

- 1) New construction of a gravel road shall have a 28' finished top, including shoulders.
- 2) Reconstruction of a gravel road shall be to the previous width prior to reconstruction.

B) Class B & C Roads

- 1) Class B and C roads will be built to the minimums as outlined by Iowa Code.

BRIDGES & Drainage Structures

A) Paved Routes

- 1) Bridges on paved routes shall be built with a minimum width of 30'. Wider structures will be installed when there are issues relating to oversized vehicles, pedestrian facilities, biking usage or other issues where the additional width is felt to be warranted.
- 2) Culverts under paved roads shall be concrete.
- 3) Pipe culverts larger than 54" in diameter may be substituted with reinforced box culverts. Corrugated metal pipe culverts 54" and larger shall have concrete and sheet pile curtain walls constructed to prevent uplift failures.
- 4) Design for drainage structures will be governed by accepted hydraulic design standards. Input from IDNR, Corp of Engineers, Iowa DOT, NRCS, or USGS may impact the size and type of the structure to be placed.
- 5) Water and livestock will use separate structures whenever possible.

B) Unpaved Routes

- 1) Bridges will normally be a minimum of 30' on gravel roads with ADT exceeding 25 vpd. Roads with less than 25 vpd may also

have 30' wide bridges constructed if the lower traffic count can be attributed to the presence of a restricted bridge. Dead end roads may be narrower at the discretion of the County Engineer

- 2) Culverts may be metal or concrete. Pipe culverts larger than 54" in diameter may be substituted with reinforced box culverts. Corrugated metal pipe culverts 54" and larger shall have concrete and sheet pile curtain walls constructed to prevent uplift failures.
 - 3) Design for drainage structures will be governed by accepted hydraulic design standards. Input from IDNR, Corp of Engineers, Iowa DOT, NRCS, or USGS may impact the size and type of the structure to be placed.
 - 4) Water and livestock will use separate structures whenever possible.
- C) Class B & C Roads
Class B and C roads will be built to the minimums as outlined by Iowa Code.
- D) Entrance Bridges
Any and all bridges/drainage structures that are fully or partially in the road right-of-way that serve as entrances to private property from the public roadway shall be considered the jurisdiction and responsibility of the County. If a structure does not sit fully or partially in the road right-of-way it will be considered a private structure and not under the jurisdiction of the county.

SECTION 4 -- REPEALER

All ordinances and resolutions, or parts thereof, in conflict herewith are hereby repealed.

SECTION 5 -- SEVERABILITY CLAUSE

If any section, provision, or part of this ordinance shall be adjudged invalid or unconstitutional, such adjudication shall not affect the validity of the ordinance as a whole or any section, provision, or part thereof not adjudged invalid or unconstitutional.

SECTION 6 -- WHEN EFFECTIVE

This ordinance shall be in effect immediately after its final passage and publication as provided by law. In addition, this ordinance shall remain in effect until such time the Board of Supervisors passes a future ordinance repealing this ordinance.

Passed and approved this _____ day of Woodbury.

Woodbury County Board of Supervisors

Mark Monson - Chairman

Larry Clausen, Member.

Jackie Smith, Member.

Jeremy Taylor, Member.

Matthew Ung, Member

ATTEST:

Patrick Gill, Woodbury County Auditor

First Reading: _____

Second Reading: _____

Approved: _____

Published: _____

WOODBURY COUNTY BOARD OF SUPERVISORS AGENDA ITEM(S)



Date: October 29, 2015

Weekly Agenda Date: November 3, 2015

DEPARTMENT HEAD / CITIZEN: Mark J. Nahra P.E. Secondary Roads Dept Head

SUBJECT: **Review of Proposed Ordinance for Limiting Use of Engine Brakes in Rural Woodbury County**

ACTION REQUIRED:

Approve Ordinance

Approve Resolution

Approve Motion

Give Direction

Other: Informational

Attachments

Information only

WORDING FOR AGENDA ITEM: Preliminary review of a new county ordinance limiting the use of engine brakes in rural Woodbury County.

EXECUTIVE SUMMARY: My office has received complaints about the use of engine brakes due to the noise created by such brake use. Some counties and cities have passed engine brake ordinances to reduce noise within selected areas.

BACKGROUND: The secondary road department is reviewing all operating policies in cooperation with the Board of Supervisors. This is another area of regulation requested for board consideration.

FINANCIAL IMPACT: I do not anticipate that this ordinance will have any effect on county finances.

RECOMMENDATION: No recommendation at this time. The policy is presented for discussion and questions only.

ACTION REQUIRED/PROPOSED MOTION: Information and discussion only.

WOODBURY COUNTY

ORDINANCE NO. ____

TITLE: AN ORDINANCE TO ESTABLISH THE LIMITED USE OF ENGINE BRAKES AND COMPRESSION BRAKES IN WOODBURY COUNTY, IOWA.

BE IT ORDAINED BY THE COUNTY OF WOODBURY, STATE OF IOWA, PURSUANT TO SECTION 331.302 AND SECTION 331.307 OF THE CODE OF IOWA:

That an ordinance limiting the usage of engine and/or compression brakes, to be cited and known as the: Engine Brake and Compression Brake Ordinance", be enacted as follows:

SECTION 1 -- PURPOSE

The purpose of this ordinance is to provide Woodbury County residents protection from excessive noise caused by the use of engine brakes and compression brakes in the general vicinity of the intersection of paved roadways. While this Ordinance prohibits the use of engine brakes and compression brakes at certain intersections of paved roadways and other designated road segments, it does not relieve the driver's obligations, liabilities and responsibilities to safely and legally traverse through the intersection.

SECTION 2 -- AUTHORITY TO ESTABLISH

The Board of Supervisors of Woodbury County is empowered under authority of Chapter 331.302 and 331.307 of the Code of Iowa, to exercise a power or perform a duty only by the passage of a motion, a resolution, an amendment or an ordinance. The Board shall, by resolution, declare its intention to establish an ordinance, which prohibits Engine brake and Compression brake usage.

SECTION 3 -- NOTICE OF HEARING

The Board shall fix a time and place for a hearing and cause notice to be published as provided by law. The notice shall set forth the intersection or road segment on which Engine brake and Compression Brake usage will be prohibited as set out in the resolution of the Board, and shall state that all persons interested may appear and be heard at such hearing.

SECTION 4 -- HEARING-COMPRESSION BRAKE AND ENGINE BRAKE USE LIMITATIONS ESTABLISHED BY RESOLUTION

On the day fixed for the hearing or any day to which the hearing has been adjourned, upon proof of its satisfaction made by affidavit of due publication and posting of the notice of hearing, the Board shall consider any and all relevant evidence

and if the Board finds the proposed intersection or road segment that limits Engine brake and Compression Usage is practical and protects the public from excessive noise it may establish it by proper resolution.

SECTION 5 -- PROHIBITION

It shall be unlawful for the driver of any vehicle to use or operate or cause to be used or operated within 500-feet of the intersection of paved roadways in the County of Woodbury, State of Iowa, as established by a resolution in accordance with this ordinance, any engine brake, compression brake or mechanical exhaust device designed to aid in the braking or deceleration of any vehicle.

It shall also be unlawful for the driver of any vehicle to use or operate or cause to be used or operated on any designated and signed roadways in the County of Woodbury, State of Iowa, as established by a resolution in accordance with this ordinance, any engine brake, compression brake or mechanical exhaust device designed to aid in the braking or deceleration of any vehicle.

This ordinance shall be enforced by law enforcement personnel.

SECTION 6 -- PENALTIES

The scheduled fine for violation of this section shall be one hundred dollars (\$100.00).

SECTION 7 -- REPEALER

All ordinances and resolutions or parts thereof, in conflict herewith are hereby repealed.

SECTION 8 -- VALIDITY

If any section, provision, or part of this ordinance shall be adjudged invalid or unconstitutional, such adjudication shall not affect the validity of the ordinance as a whole or any section, provision, or part thereof not adjudged invalid or unconstitutional.

SECTION 9 -- WHEN EFFECTIVE

This ordinance shall be in effect after its final passage, approval and publication, as provided by law.

Passed and approved this ____ day of _____, 20__.

Woodbury County Board of Supervisors

Chairperson

ATTEST:

County Auditor

First Reading: _____

Second Reading: _____

Approved: _____

Published: _____

WOODBURY COUNTY BOARD OF SUPERVISORS AGENDA ITEM(S)



Date: October 29, 2015

Weekly Agenda Date: November 3, 2015

DEPARTMENT HEAD / CITIZEN: Mark J. Nahra P.E. Secondary Roads Dept Head

SUBJECT: **Consideration of award of quotations for weed commissioner's pickup truck**

ACTION REQUIRED:

Approve Ordinance

Approve Resolution

Approve Motion

Give Direction

Other: Informational

Attachments

Consideration X

WORDING FOR AGENDA ITEM: Consideration of award of quotation for one ½ ton pickup truck for the county weed commissioner.

EXECUTIVE SUMMARY: Quotations were received by the Board on October 27, 2015.

BACKGROUND: The department solicited quotations from several auto/pickup truck dealers. Three dealers responded with quotations.

FINANCIAL IMPACT: This project is funded within the weed eradication budget.

RECOMMENDATION: Staff recommends the purchase of one Ford F150 from Jensen Motors in trade for the 1992 Ford pickup for a net purchase price of \$23,318.

ACTION REQUIRED: Motion to accept and award the quotations from Jensen Motors for one Ford F150.

Approved by Board of Supervisors March 3, 2015.

WOODBURY COUNTY BOARD OF SUPERVISORS AGENDA ITEM(S) REQ

#16a

Date: October 28, 2015

Weekly Agenda Date: November 3, 2015

DEPARTMENT HEAD / CITIZEN: Supervisor Jeremy Taylor

SUBJECT: Closing of Prairie Hills and LEC Expansion

ACTION REQUIRED:

Approve Ordinance Approve Resolution Approve Motion

Give Direction Other: Informational Attachments

WORDING FOR AGENDA ITEM: Closing of Prairie Hills and LEC Expansion

EXECUTIVE SUMMARY: Prairie Hills needs to be closed, and this space can be repurposed. Doing so will demonstrate that the county is engaging in long-term planning and being responsible, sound, and prudent fiscal stewards of tax dollars as it relates to utility costs and ongoing expenses. At the same time, the needs of the county can be met in a much more efficient manner.

BACKGROUND: see attached Power Point

FINANCIAL IMPACT: Contractual cost paid on hourly basis for cost estimates through gaming revenue.

RECOMMENDATION: Approve the following motion.

ACTION REQUIRED: I move that the attached Baker Group contract be approved in order to put together to adequately study the costs and opportunities associated with the expansion of the Law Enforcement Center to serve the county needs after Prairie Hills closes.



Facility Improvement Master Plan

October 28, 2015

Law Enforcement Center Expansion

EXECUTIVE SUMMARY

Much has happened over the past few weeks regarding the availability of past information and recovery of old building plans for the LEC and Jail area. Please refer to the report provided by Supervisor Taylor regarding current information gleaned from recent committee meetings and discoveries.

Basically at this point as a result of everyone's efforts, it is fairly apparent that we can in fact expand the Jail area into the now unused outside exercise areas. In addition to our own analysis of the building plans a report from a structural engineer in previous years also indicates that some form of construction should be possible. The part that is still unclear is exactly to what extent can this area be utilized? At the very least it appears that construction for open areas similar to other areas of the jail should be doable. To the greater extent and as future needs change, it may be possible to put Jail Cells into the area. Either way it will create about 5,000 square feet of space and multiple options not currently available for Jail operations. It's our recommendation to get a current day and final opinion on this from a reputable and independent Structural Engineer in order for everyone to properly plan for the best long term use of this space.

The attached Step by Step plan has been prepared as a guide to take the development of this expansion opportunity through the preliminary stages without great expense to the County. This will allow the Board of Supervisors the chance to evaluate results after each step in the process and make a "go" or "no go" decision to proceed to the next step. It also allows for a progressive plan to evolve into the selection of an Architectural firm for the project as it keeps moving forward.

Because of all the work Baker Group has already done on this project and our strong belief this project has a high potential for implementation we have decided to work with the County through the first two steps of this process without costs to the County. Beyond that Baker Group will bill the County on an hourly basis through this phase. If the project moves beyond that we will negotiate future costs to the County before proceeding.

Respectfully,

David Jorgenson, Director
Facility Improvement Master Plan

Woodbury County LEC

Expansion Plan into Existing Space (Outside Recreation Area)
Relocate Kitchen

	Board of Supervisors	Baker Group	Structural Engineer	Interview Team	Design Team	Sheriff Office
Step 1 Define structural integrity for maximum floor load						
A. In office review of LEC as-built drawings		x	4			
B. On site visit and inspection of LEC		x	10			
C. Report from Structural Engineer			2			
D. Board decision for "go" or "no go" to move forward	x					
Step 2 Selection of Design Team						
A. Prepare Request for Qualifications (RFQ) for Architect		x				
B. Select Interview Team (County, Baker Group, Sheriff/Jail)	x					
C. Prepare interview questions and evaluation sheet		x		x		
D. Selection of Architects to be invited to respond	x	x		x		
E. Recommendation to Board for selection of Architect		x		x		
F. Selection of Architect finalized	x					
Note: No costs to the County up to this point except for the hourly rate for the Independent Structural Engineer						
Step 3 Identify Building Code Obstacles						
Meet with DOC and State Fire Marshall to review concept, requirements and feasibility		8 *			8	
Step 4 Relocate Kitchen out of Prairie Hills	x					x

Sheriff Office: Work with CBM Food Services to develop a conditional Letter of Intent for moving the food preparation Kitchen from Prairie Hills to the existing Kitchen Space in the Court House. CBM to provide all equipment needed including cooking, refrigeration, freezing, dish washing and exhaust hood improvements. Cost of equipment would be included in the meal prices and contract terms would be negotiated.

Step 5 Reconfigure Kitchen preliminary plan and budget

Baker Group , Facility Services & CBM would work together to provide a budget for General Construction, Electrical Service, Plumbing and HVAC as needed to accommodate the space.

Step 6 Conceptual Design

County to contract with Architect and Construction Manager for conceptual design development and construction budget for Jail .

Step 7 Decision to move forward to complete design

		16 *				
x	80 *	TBD	TBD	x	x	
x						x

Hourly Rate as needed:

\$ 115

\$ 125

* Stated hours are estimated only and will be invoiced based on actual hours. Actual hours worked in each Step will be reported to the Board of Supervisors on two week basis. The estimated hours will not be exceeded without Board approval.

The Prairie Hills Facility

We have covered much ground in the first 3 meetings as relates to The Prairie Hills facility to include its \$1.2 million minimum costs projected over the next 10 years just for utilities and basic ongoing maintenance, several needs still exist: **Work Release, the Weekenders' Program, a training and/or exercise area, gun range and other outbuildings, and a kitchen** whereby in the past CBM has reportedly been able to reduce costs for meals. I believe that our work and discussions has laid the groundwork for the closing of the facility due to widespread deterioration (HVAC building automation problems, boiler and domestic water issues, settling and structural problems, a grave liability in the concrete stack, windows with no thermal breaks, piping issues, etc.)

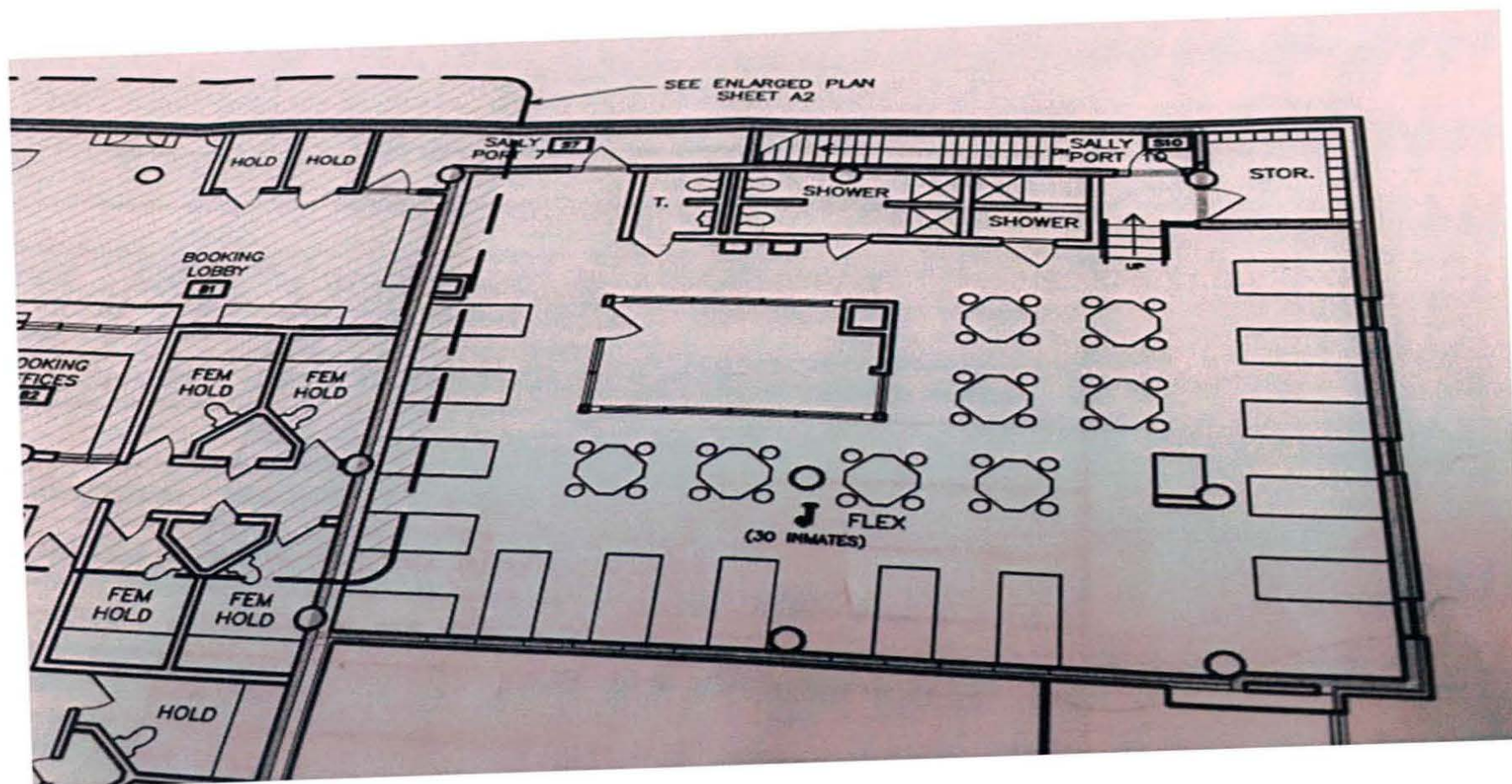
Our Long-Term Facility Master Plan developed by The Baker Group identified these and many other numerous issues that make keeping this facility with its limited usage open a questionable use of tax dollars. Furthermore, "rough order of magnitude" cost estimates have ranged from \$8 million for the entire renovation of 3 floors or \$2.2 - \$5.7 million for the first floor and new addition all of which would require a bond issue. Only a "Training Facility" could fall under such threshold at approximately \$987,000 and even then, this does not address the true need for which the building was originally purposed.

Potential Need #1: Work Release

The original purpose of “J Block,” according to Mike Neswick the architect at RML who was involved in study of the jail, was for Work Release. It is accessible from an outside entrance and comprises 2,264 square feet of space. This dormitory-style setting that currently houses lesser offending females could be returned to its original purposes with nearly no new cost. Plans show the potential of 30 inmates.

This would answer the question of Work Release and/or the “Weekenders’ Program” potentially. That would in turn cause a necessary expansion of repurposed space necessary to house the current population comprising “J Block.” Nothing also precludes Woodbury County for advocating for “24/7” at the State Legislative level and even using this area should that endeavor be successful.

Image of J Block



Potential Need #2: New J Block

Outdoor Recreation Area Enclosure

“Currently, the outdoor recreation area has a perimeter of concrete block walls that support steel joists covered with a wire mesh for security. ***Providing a permanent weather-resistant enclosure of this area is possible and would involve relatively economical construction*** [my emphasis]. The existing joists would remain, and new joists would be added between them. We would recommend a low-slope roof system utilizing metal standing seam roof panel. The roof could be sloped in one direction, slope from a center ridge in two directions, or have a “hip” configuration. Our cost estimate for the enclosure is approximately \$200,000.

“Structurally, it appears feasible to construct a roof over all or part of the current rooftop outdoor recreation area, but utilization of this space may be limited because there is no handicapped access to this level. To solve this problem, it may be necessary to extend the existing east elevator to the roof level...”

Images



Structural Integrity Issues

In presenting our first 3 meetings' worth of notes, the idea of this outdoor recreational area was purported to have been explored and found that it did not have structural integrity. However, that is not true. The Baker Group and our Building Superintendent have examined prints and do not see why it could not hold. In fact, Mike Neswick provided me with a Bacon Creek Structural Engineer report that stated that there is a 100 PSF (pounds/square ft.) live load.

This may not be enough to hold concrete cell block but could have the potential to have steel joists with metal panels. However, based on an October 22 meeting between Kenny Schmitz (building superintendent), Mike Neswick (RML) and myself, the discovery of having "J Block" potentially repurposed for this area would not present structural integrity issues at all.

Potential Need #3: The Kitchen

The Kitchen

CBM explored the kitchen across the street. They were impressed with the space, facilities, and believe that through a cost-sharing agreement, they can even purchase the additional equipment necessary. Even without the investment and cost-sharing agreement, they estimated only adding \$0.25 / meal without the use of a kitchen (\$7,200 annually). This is less than 75% of what it was previously estimated to cost, but we believe that issues can be worked out to provide them with a kitchen just across the street from the Law Enforcement Center.

Potential Need #4: Gun Range / Outbuildings

Gun Range and Outbuildings

Nothing in this potential plan would preclude the Sheriff's Department from utilizing outbuildings, the gun range, or having land usage. It would be the physical facility itself that would be subject to close once another space could be repurposed in order to meet the other needs.

Studying the Specific Costs and Understanding Needs

Propose to get more specific costs to bring before the Board.

What concerns, opportunities, questions exist?

What else should be known?

WOODBURY COUNTY BOARD OF SUPERVISORS AGENDA ITEM(S) R

#166

Date: October 28, 2015

Weekly Agenda Date: November 3, 2015

DEPARTMENT HEAD / CITIZEN: Supervisor Jeremy Taylor

SUBJECT: **Resolution Honoring Pastor Edgar Rodriguez**

ACTION REQUIRED:

Approve Ordinance
Motion

Approve Resolution

Approve

Give Direction

Other: Informational

Attachments

WORDING FOR AGENDA ITEM: Resolution Honoring Pastor Edgar Rodriguez

EXECUTIVE SUMMARY: see attached

BACKGROUND: see attached

FINANCIAL IMPACT: None

RECOMMENDATION: Approve the following resolution.

ACTION REQUIRED: Approve the following resolution.

WOODBURY COUNTY, IOWA



RESOLUTION NO.

A RESOLUTION THANKING AND COMMENDING

Pastor Edgar Rodriguez

FOR YOUR SERVICE TO WOODBURY COUNTY

WHEREAS, Edgar Rodriguez served the United States Marine Corps, First Battalion Sixth Marines, Second Marine Division in various billets from 1993-1997;

WHEREAS, after being a pastor in Portland, Oregon in 2010 and receiving the highest award given by the city for his contribution to livability issues and community assistant programs, Edgar re-launched New Hope Church in Merville in April 2012, which has more than tripled in size;

WHEREAS, Edgar is the founder of the Community Basket of Woodbury and Plymouth Counties and several mobile food pantries across Siouxland;

WHEREAS, in 2013 Edgar received the Governor's Award for developing a model that helps rural town "food insecure" residents receive support; and

WHEREAS, Edgar also currently serves as the Chaplain for the Woodbury County Sheriff's Office

NOW THEREFORE, BE IT RESOLVED BY THE BOARD OF SUPERVISORS OF WOODBURY COUNTY, IOWA that the undersigned members of this Board thank and commend Pastor Edgar Rodriguez for his years of service to Woodbury County; and

BE IT FURTHER RESOLVED that it is the wish of all those signing below that the future hold only the best for this very deserving person, Pastor Edgar Rodriguez.

BE IT SO RESOLVED this 3rd day of November, 2015

WOODBURY COUNTY BOARD OF SUPERVISORS

Mark A. Monson, Chairman

Jaclyn D. Smith, Member

Larry D. Clausen, Member

Jeremy J. Taylor, Member

Matthew A. Ung, Member

Attest: Patrick F. Gill, Woodbury County Auditor



Woodbury County Conservation Board
4500 Sioux River Road Sioux City, IA 51109-1657

Phone: 712/258-0838
Fax: 712/258-1261

Board Members:
Cindy Bennett
Suzan Boden
Don Dixon
Mark Taylor, D.O.
Christine Zellmer-Zant

Rick D. Schneider, Director
Mark Peterson, Deputy Director
Dawn Snyder, Education Director

Monday, November 2, 2015

MONTHLY MEETING AGENDA – 5:00 P.M.

Dorothy Pecaut Nature Center
4500 Sioux River Road, Sioux City, IA 51109

- **Call to order / roll call** – quorum / open meeting compliance
- **Public comment / input** – this is an opportunity for the public to address any subject pertaining to Conservation Board business.

CONSENT AGENDA

- C1. Approve minutes of the October 1, 2015 monthly meeting.
- C2. Approve October 2015 claims and expenditures.
- C3. Receive and place on file the October 2015 financial / budget report.
- C4. Acceptance of Gifts/Donations:
 - 1. Jerry Hoss – Beef liver for raptors.
 - 2. Alcester-Hudson Girl Scout Troop 50296 for craft materials
 - 3. Debra and Alan Phillips/Lisa Lee Milbrodt – Monetary donation (\$100) for Deloris Milbrodt memorial.
 - 4. Kohl's Cares – Monetary donation (\$500).
 - 5. Numerous donations for Nature Center 20th Anniversary celebration.

REGULAR AGENDA

- R1. Approve consent agenda. (Conservation Board)
- R2. Consideration and approval of a Memorandum of Understanding with Iowa Natural Heritage Foundation for acquisition of 120 acres of land to expand Curtin Timber. (Conservation Board)
- R3. Review of and action on Request For Proposals for constructing two housekeeping cabins at Southwood Conservation Area. (Schneider)

"Conservation is everybody's business"

- R4. Consideration and approval of Resolution #15-01 regarding Funding the Natural Resources and Outdoor Recreation Trust Fund. (Schneider)
- R5. Consideration of replacing the classroom divider wall in the Dorothy Pecaut Nature Center. (Snyder)
- R6. Request to initiate hiring process for Resource Naturalist position. (Snyder)
- R7. Capital Improvement Projects Update (Schneider)
 - 1. Stub Gray Shooting Range
 - 2. Brown's Lake campground drainage project
- R8. Board member / staff reports – Board members and staff may report on meetings or activities that they have been involved with. (Board and staff)
 - 1. Nature Center activities (Snyder)
 - 2. Park activities (Peterson)
 - 3. Administrative items (Schneider)
 - a. December meeting
 - b. City Auction results
 - c. Strategic planning for Woodbury County
- R9. Adjournment

CALENDAR OF EVENTS:

- 1. Conservation Board meeting – December 3, 2015, DPNC
- 2. Iowa State Association of Counties Fall School – November 18-20, 2015, Cedar Rapids

Put us to work for you!

October 17, 2015

Dear Friends,

“Rain Drops Are Falling On Our Heads, INSIDE!”

NPI (WACO, Inc. back then) purchased the building located at 300 South Martha Street in 1975. The flat roofed building was elderly then; now, 40 years later, we have a real problem. When it rains there are no fewer than 13 leaks throughout the building, causing many safety and health issues.

In 2015 New Perspectives, Inc. (NPI) has provided services to more than 100 people with disabilities. Over 70% of those served receive some type of support in the 300 South Martha Building. NPI serves people with a wide variety of disabilities.

While many of us take our independence for granted, those we serve depend on others - family, friends, community and NPI to assist them to

“Discover Their Potential”!



How do people in Siouland with intellectual and developmental disabilities discover independence and opportunities that enhance their lives? They discover these opportunities with NPI. For over 90 years, NPI has been a visionary provider of employment services and innovative programs for those in our community with disabilities.

Meet Tommy, he enjoys a variety of activities in the Life Enrichment Center(LEC).



We are asking everyone for their support in helping NPI, Tommy and all of his umbrella'd friends during NPI's 2015 Capital Campaign. The replacement estimate for the roof on the LEC and office area of the 300 building is **\$50,000**. Your generous tax deductible donation will offset NPI's cash expense and enable us to continue providing a safe and healthy environment for services.

In advance, we thank you so much for your charitable contribution that will enable NPI to continue our vital mission of assisting people with disabilities to *“Discover Their Potential.”*

Mark Stuck

Board President

Jolie Corder

Executive Director

NPI Board of Directors

President Mark Stuck	Vice President Amy Tooley	Treasurer Jon Friessen	Secretary Merrill Muller
Director Randy Chapman	Director Dave Dawson	Director Joe Durham	Director Rod Gaskell
Director Cyndi Hanson	Director Scott Knutson	Director Seth Major	Director Charese Yanney

