



NOTICE OF MEETING OF THE WOODBURY COUNTY BOARD OF SUPERVISORS
(AUGUST 16, 2016) (WEEK 33 OF 2016)

Agenda and Minutes also available at
www.woodburycountyiowa.gov

Larry D. Clausen 389-5329
Mark A. Monson 204-1015
Jaclyn D. Smith 898-0477
Jeremy J. Taylor 259-7910
Matthew A. Ung 490-7852

You are hereby notified a meeting of the Woodbury County Board of Supervisors will be held August 16, 2016 at 4:30 p.m. in the Basement of the Courthouse, 620 Douglas Street, Sioux City, Iowa for the purpose of taking official action on the agenda items shown hereinafter and for such other business that may properly come before the Board.

This is a formal meeting during which the Board may take official action on various items of business. If you wish to speak on an item, please follow the seven participation guidelines adopted by the Board for speakers.

- 1. Anyone may address the Board on any agenda item after initial discussion by the Board.
2. Speakers will approach the microphone one at a time and be recognized by the Chair.
3. Speakers will give their name, their address, and then their statement.
4. Everyone will have an opportunity to speak. Therefore, please limit your remarks to three minutes on any one item.
5. At the beginning of the discussion on any item, the Chair may request statements in favor of an action be heard first followed by statements in opposition to the action.
6. Any concerns or questions you may have which do not relate directly to a scheduled item on the agenda will also be heard under the first or final agenda item "Citizen Concerns."
7. For the benefit of all in attendance, please turn off all cell phones and other devices while in the Board Chambers.

AGENDA

- 4:00 p.m. 1. General Relief Appeal Hearing for D. L. {Iowa Code Section 21.5 (1) (a)}
First Floor Board of Supervisors Meeting Room
4:30 p.m. 2. Call Meeting to Order - Pledge of Allegiance to the Flag - Moment of Silence
3. Citizen Concerns Information
4. Approval of the agenda August 16, 2016 Action
5. Approval of the minutes of the August 9, 2016 meeting Action
Approval of the minutes of the August 4, 2016 special meeting Action
6. Discussion and approval of claims Action
7. Presentation of resolution thanking and commending Rosemary Jurney Information
for her years of service in Woodbury County

Recess Board of Supervisors Meeting
Convene Bennet McDonald Smithland Drainage District Trustee Meeting

- 8. Update on Bennet McDonald Smithland Drainage District work and consideration Action
of contract extension with project consultant

Adjourn Bennet McDonald Smithland Drainage District Trustee Meeting
Continue Board of Supervisors Meeting

- | | |
|--|-------------|
| 9. Human Resources – Ed Gilliland | |
| a. Approval of Memorandum of Personnel Transaction | Action |
| b. Authorize Chairman to sign Authorization to Initiate Hiring Process | Action |
| 10. Board Administration – Karen James | |
| Approval of resolution thanking and commending a county employee for years of service | Action |
| 11. Board of Supervisors – Jeremy Taylor | |
| Approval of resolution thanking and commending Deputy Brad Rose for his exemplary action in the line of duty | Action |
| 12. Planning/Zoning – John Pylelo | |
| The approval of a resolution approving the Final Platting for Deer Run Addition – a minor subdivision and authorization of Chairman’s signature upon said resolution | Action |
| 13. Board Administration – Dennis Butler | |
| Clarification, information and further discussion concerning Sioux Rivers Region taxation, service delivery, Region response, and the future | Information |
| 14. Building Services – Kenny Schmitz | |
| Woodbury County Buildings – HVAC Systems Information | Information |
| 15. Chairman’s Report | Information |
| a. LEC Expansion: DD Phase implementation | |
| b. Information requesting tuckpointing and evaluation of costs | |
| c. Juvenile Detention Budget Information/Clarification | |
| d. Scheduling the First Floor Board Room with Karen James/Heather Satterwhite | |
| 16. Reports on Committee Meetings | Information |
| 17. Citizen Concern | Information |
| 18. Board Concerns and Comments | Information |

ADJOURNMENT

Subject to Additions/Deletions

CALENDAR OF EVENTS

MONDAY, AUGUST 15	4:30 p.m.	Community Action Agency of Siouxland Board Meeting, 2700 Leech
WEDNESDAY, AUGUST 17	12:00 noon	Siouxland Economic Development Corporation Meeting, 617 Pierce St., Ste. 202, Sioux City, Iowa
	10:00 a.m.	Siouxland Center for Active Generations Board of Directors Meeting, 313 Cook Street
THURSDAY, AUGUST 18	11:00 a.m.	Siouxland Regional Transit Systems (SRTS) Board Meeting, SIMPCO Office, 1122 Pierce St., Sioux City, Iowa
MONDAY, AUGUST 22	6:00 p.m.	Zoning Commission Meeting, Board of Supervisors' Chambers
	6:30 p.m.	Salix Town Hall Meeting, City Hall, 317 Tipton Street, Salix
	7:30 p.m.	Fair Board Meeting, Woodbury County Fair Office, Fairgrounds, Merville
TUESDAY, AUGUST 23	1:30 p.m.	Sioux Rivers Regional Governance Board Meeting, Plymouth County Courthouse Annex Building, 215 4th Ave. S.E., Le Mars, Iowa
THURSDAY, SEPTEMBER 1	5:00 p.m.	Conservation Board Meeting, Snyder Bend Park shelter.
TUESDAY, SEPTEMBER 6	4:45 p.m.	Veteran Affairs Meeting, Veteran Affairs Office, 1211 Tri-View Ave.
WEDNESDAY, SEPTEMBER 7	12:00 noon	District Board of Health Meeting, 1014 Nebraska St.
MONDAY, SEPTEMBER 12	6:00 p.m.	Board of Adjustment meeting, Board of Supervisors' Chambers
WEDNESDAY, SEPT. 14	8:05 a.m.	Woodbury County Information Communication Commission, Board of Supervisors' Chambers
	6:30 p.m.	911 Service Board Meeting, Public Safety Center, Climbing Hill
	8:00 p.m.	County's Mayor Association Meeting, Public Safety Center Climbing Hill
THURSDAY, SEPT. 15	7:00 p.m.	Siouxland Mental Health Center, Board Meeting, 625 Court Street
	12:00 p.m.	SIMPCO Board of Directors, 1122 Pierce St, Sioux City, Iowa

The following Boards/Commission have vacancies: Commission To Assess Damages - Category A, Category B, Category C and Category D

Woodbury County is an Equal Opportunity Employer. In compliance with the Americans with Disabilities Act, the County will consider reasonable accommodations for qualified individuals with disabilities and encourages prospective employees and incumbents to discuss potential accommodations with the Employer.

Federal and state laws prohibit employment and/or public accommodation discrimination on the basis of age, color, creed, disability, gender identity, national origin, pregnancy, race, religion, sex, sexual orientation or veteran's status. If you believe you have been discriminated against, please contact the Iowa Civil Rights Commission at 800-457-4416 or Iowa Department of Transportation's civil rights coordinator. If you need accommodations because of a disability to access the Iowa Department of Transportation's services, contact the agency's affirmative action officer at 800-262-0003.

AUGUST 9, 2016 —TWENTY-NINTH MEETING OF THE WOODBURY COUNTY BOARD OF SUPERVISORS

The Board of Supervisors met on Tuesday, August 9, 2016 at 4:30 p.m. Board members present were Monson, Ung, Clausen, Taylor, and Smith. Staff members present were Dennis Butler, Budget/Tax Analyst, Karen James, Executive Secretary/Public Bidder, Ed Gilliland, Human Resources Director and Patrick Gill, Auditor/Clerk to the Board.

1. The meeting was called to order with the Pledge of Allegiance to the Flag and a Moment of Silence.
2. There were no citizen concerns.
3. Motion by Monson second by Taylor to approve the Agenda for August 9, 2016. Carried 5-0. Copy filed.
4. Motion by Clausen second by Ung to approve the minutes of the August 2, 2016 Board meeting. Carried 5-0. Copy filed.
5. Motion by Taylor second by Ung to approve the claims totaling \$620,331.95. Carried 5-0. Copy filed.
6. Motion by Smith second by Monson to approve the separation of Caleb Corbin, Temporary Engineering Aide, Secondary Roads Department, effective August 5 2016. end of temporary work, the separation of Wyatt Fitch, Temporary Engineering Aide, Secondary Roads Department, affective August 12, 2013, end of temporary work, the reclassification of Cornelia Venable-Ridley, Assistant County Attorney, County Attorney Department, \$64,440/year, 4.8%=\$2,956/year, effective August 26, 2016, per AFSCME Assistant County Attorney contract agreement, from Step 3 to Step 4, the reclassification of David Dawson, Assistant County Attorney, County Attorney Department, \$67,391/year, 4.5%=\$2,951/year, effective August 31, 2016 per AFSCME Assistant County Attorney contract agreement, from Step 4 to Step 5. Carried 5-0. Copy filed.
7. Motion to Monson second by Taylor approve and receive for signatures a resolution naming depositories for the Conservation Department. Carried 5-0.

RESOLUTION NAMING DEPOSITORIES #12,413

BE IT RESOLVED by the Woodbury County Board of Supervisors in Woodbury County, Iowa: That we do hereby designate the following named banks to be depositories of the Woodbury County funds in amounts not to exceed the amount named opposite each of said designated depositories and Rick Schneider, Woodbury County Conservation is hereby authorized to deposit the Woodbury County funds in amounts not to exceed in the aggregate the amounts named for said banks as follows, to wit:

NAME OF DEPOSITORY	LOCATION	MAXIMUM DEPOSIT In the effect Prior resolution	MAXIMUM DEPOSIT under the resolution
First National Bank	Correctionville, Iowa	\$15,000	\$40,000
Kingsley State Bank	Sergeant Bluff, Iowa	\$ -----	\$60,000

SO RESOLVED this 9th day of August, 2016
WOODBURY COUNTY BOARD OF SUPERVISORS
 Copy filed.

- 8a. Motion by Monson second by Smith to approve and receive for signatures a resolution to add two bridge projects to the FY 2017 five year construction program. Carried 5-0.

Resolution to Revise Woodbury County 2017 Five Year Road Program

Resolution No. 12,414

Unforeseen circumstances have arisen since adoption of the approved Secondary Road Construction Program, and previous revisions, requiring changes to the sequence, funding and timing of the proposed work plan,

The Board of Supervisors of Woodbury County, Iowa, in accordance with Iowa Code section 309.22, initiates and recommends modification of the following project(s) in the accomplishment year (State Fiscal Year 2017), for approval by the Iowa Department of Transportation (Iowa DOT), per Iowa Code 309.23 and Iowa DOT Instructional Memorandum 2.050.

The following approved Priority Year projects shall be ADDED to the Program's Accomplishment year:

Project Number Local ID TPMS #	Project Location Description of work	AADT Length NBIS #	Type Work Fund basis	Accomplishment Year (\$1000's of dollars)	
					New amount
L-B(L212)--73-97 Bridge L212 Replacement TPMS ID: 5771	Story Ave.: From 190th Street to 200th Street Construct RCB Culvert	5 0 MI 352930	Box Culverts LOCAL		\$300
L-B(D38)--73-97 Bridge D38 Replacement TPMS ID: 10229	120th: From Emmett to Fayette Bridge Replacement	50 0.1 MI 355132	Bridges LOCAL		\$250
Totals					\$550

Fund ID	Accomplishment year (\$1000's of dollars)		
	Previous Amount	New Amount	Net Change
Local Funds	\$1,765	\$2,315	\$550
Farm to Market Funds	\$3,370	\$3,370	\$0
Special Funds	\$2,330	\$2,330	\$0
Federal Aid Funds	\$1,080	\$1,080	\$0
Total construction cost (All funds)	\$8,545	\$9,095	\$550
Local 020 Construction cost totals (Local Funds + BROS-8J FA funds)	\$1,765	\$2,315	\$550

WOODBURY COUNTY BOARD OF SUPERVISORS
Copy filed.

- 8b. Motion by Taylor second by Ung to approve the underground utility permit for DGR Engineering for installation of an electric line under CF Industries Drive. Carried . Copy filed.
- 8c. Motion by Smith second by Monson to approve the tile crossing permit for Calvin Tyer for installation of a tile line on 140th Street. Carried 5-0. Copy filed.
- 8d. Motion by Monson second by Ung for the Board to receive bids for propane for heating Secondary Road Department, Emergency Services, Conservation, and the Little Courthouse in Anthon, and award to the low bidder. Carried 5-0. Copy filed.
- 8e. Motion by second by for the Board to receive bids for calcium chloride for snow removal, and consider award to the low bidder. Carried . Copy filed.
- 9a. Information was presented on the original color of the courthouse window frames and the consensus of the Board was to proceed with using the historical colors.
- 9b.1. Motion by Monson second by Taylor to approve the proposal from Resource Consulting Engineers dated July 27, 2016. Carried 5-0. Copy filed.

- 9b.2. Motion by Monson second by Taylor to approve The Baker Group Courthouse steam trap replacement contract. Carried 5-0. Copy filed.
- 9c. Motion by Taylor second by Monson to authorize the Building Services Department unchallenged and/or unobstructed access, without notification to any party, at any time to conduct work, services, or business as may be necessary in relationship to all areas of the 1211 Tri-View Avenue property. Carried 3-2; Clausen and Smith opposed.
- 10a. The Chairman presented information on the response by Board Chairman Taylor regarding improper public posting of Sioux Rivers' "mediation committee" for August 1, 2016. Copy filed.
- 10b. The Chairman presented information on data gathering on a report for County contributions to Sioux Rivers Region.
- 10c. The Chairman presented information on Iowa Public Information Board (IPIB) and Sioux Rivers Regions.
- 10d. The Chairman presented information on the exploration of network reconfiguration at Emergency Services.
- 10e. The Chairman presented information on Committee Information for the public to know and keeping the Board informed.
- 10f. Information was on the costs for the Employee Appreciation Luncheon.
- 11. The Board members reported on their committee meetings.
- 12. There were no citizen concerns.
- 13. Board members offered concerns and comments.

The Board adjourned the regular meeting until August 16, 2016.

Meeting sign in sheet. Copy filed.

August 4, 2016 —SPECIAL MEETING OF THE WOODBURY COUNTY BOARD OF SUPERVISORS AND THE WOODBURY COUNTY COURTHOUSE ADVISORY COMMITTEE FOR HISTORICAL PRESERVATION AND THE SUBCOMMITTEE OF THE COURTHOUSE FOUNDATION FOR THE HUNDRED YEAR ANNIVERSARY OF THE COURTHOUSE OPENING

The Board of Supervisors met jointly on Thursday, August 8th, 2016 at 10:30 p.m. in the Board of Supervisors Meeting Room with .the Woodbury County Courthouse Advisory Committee for Historical Preservation and the subcommittee of the Courthouse Foundation for the Hundred Anniversary of the Courthouse Opening. Board members present were Monson, Ung and Smith; Taylor, Clausen were absent. Committee members present were Ed Storm, Kenny Schmitz, Terry Glade, Ed Jim Jung, Mike Walsh and Ed Gilliland. Patrick Gill attended as Auditor/Clerk to the Board.

Kenny Schmitz updated the Board on the status of repairs to the windows in Courtroom 203. There was a discussion on the returning the windows to the original “vivid blue” color. There was a discussion on long term financing of repairs and maintenance. Tuck pointing, interior plaster and various other needs were discussed.

A public plea to return Courthouse artifacts was discussed.

There was a discussion hundred year celebration and the need to develop a budget for the event.

The Board adjourned.

WOODBURY COUNTY, IOWA

RESOLUTION NO. _____

A RESOLUTION THANKING AND COMMENDING

Rosemary Journey

FOR YOUR SERVICE TO WOODBURY COUNTY

WHEREAS, Rosemary Journey has demonstrated herself to be an outstanding citizen of Woodbury County by volunteering with the Siouxland Area Chapter of the American Red Cross serving 13 counties in Northwest Iowa, Nebraska, and South Dakota; and

WHEREAS, Rosemary has served as a volunteer for the American Red Cross in Military Support for 40 years dedicating her time, day or night, as the critical link between U.S. military families and their deployed loved ones by making informed decisions in a timely and verifiable manner with approximately 300 messages being communicated on a yearly basis; and

WHEREAS, she also goes above and beyond her duties visiting returning veterans that are hospitalized, attending military funerals, welcoming them home after their tour of duty, offering hours of support and resources to military families, or simply holding a hand of someone in their time of need; and

NOW THEREFORE, BE IT RESOLVED BY THE BOARD OF SUPERVISORS OF WOODBURY COUNTY, IOWA that the undersigned members of this Board thank and commend Rosemary Journey for her years of service to Woodbury County; and

BE IT FURTHER RESOLVED that it is the wish of all those signing below that the future hold only the best for this very deserving person, Rosemary Journey.

BE IT SO RESOLVED this 2nd day of August, 2016.

WOODBURY COUNTY BOARD OF SUPERVISORS

Jeremy J. Taylor, Chairman

Jaclyn D. Smith, Member

Larry D. Clausen, Member

Mark A. Monson, Member

Matthew A. Ung, Member

Attest:

Patrick F. Gill, Woodbury County Auditor

WOODBURY COUNTY BOARD OF SUPERVISORS AGENDA ITEM(S) REQUEST FORM

Date: 8/11/2016 Weekly Agenda Date: 8/16/2016

ELECTED OFFICIAL / DEPARTMENT HEAD / CITIZEN: Mark J. Nahra, Woodbury County Engineer

WORDING FOR AGENDA ITEM:

Update on Bennet McDonald Smithland Drainage District work and consideration of contract extension with project consultant

ACTION REQUIRED:

- | | | |
|--|---|--|
| Approve Ordinance <input type="checkbox"/> | Approve Resolution <input type="checkbox"/> | Approve Motion <input checked="" type="checkbox"/> |
| Give Direction <input checked="" type="checkbox"/> | Other: Informational <input type="checkbox"/> | Attachments <input type="checkbox"/> |

EXECUTIVE SUMMARY:

At the Board's direction, we have been working to address inspection deficiencies in the BMS drainage district. A report will be shared and additional work will be identified.

BACKGROUND:

In response to Corps of Engineers identified deficiencies in the levee system in the drainage district, the county has hired a consultant to survey the boundaries of the drainage district. This work is partially complete and we have found the land ownership records to be incomplete. The consultant will report to the Board and identify additional work necessary to meet requirements.

FINANCIAL IMPACT:

Drainage district expenses will be levied against the benefited properties within the district.

IF THERE IS A CONTRACT INVOLVED IN THE AGENDA ITEM, HAS THE CONTRACT BEEN SUBMITTED AT LEAST ONE WEEK PRIOR AND ANSWERED WITH A REVIEW BY THE COUNTY ATTORNEY'S OFFICE?

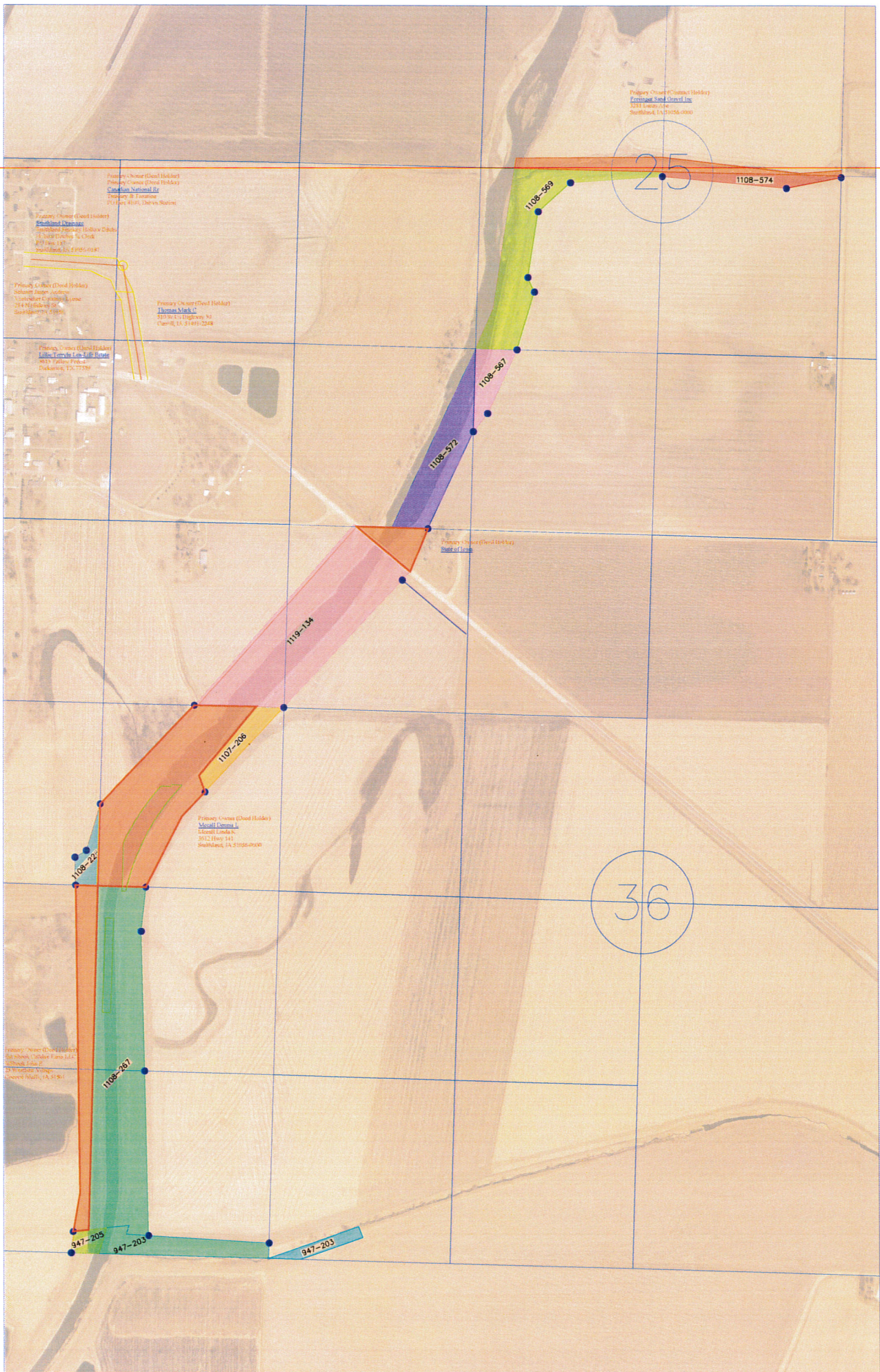
Yes No

RECOMMENDATION:

[Empty box for recommendation]

ACTION REQUIRED / PROPOSED MOTION:

Motion to receive the report and direct the consultant to prepare a project addendum for board approval.



HUMAN RESOURCES DEPARTMENT

MEMORANDUM OF PERSONNEL TRANSACTIONS

DATE: August 16, 2016

* PERSONNEL ACTION CODE:

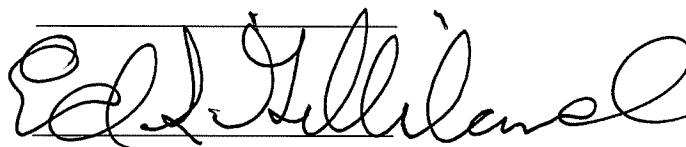
- A- Appointment
- T - Transfer
- P - Promotion
- D - Demotion
- R-Reclassification
- E- End of Probation
- S - Separation
- O - Other

TO: **WOODBURY COUNTY BOARD OF SUPERVISORS**

NAME	DEPARTMENT	EFFECTIVE DATE	JOB TITLE	SALARY REQUESTED	% INCREASE	*	REMARKS
Paulsen, Tyler	Secondary Roads	8-05-16	Temporary Summer Laborer			S	End of Temporary Work.
Lenz, Michael	County Sheriff	9-02-16	Sheriff Deputy	\$26.04/hr	16%=\$3.64/hr	R	Per CWA Deputy Sheriff Contract agreement, from Class 2 to Class 1.

APPROVED BY BOARD DATE:

ED GILLILAND, HR DIRECTOR:



WOODBURY COUNTY
HUMAN RESOURCES DEPARTMENT

TO: Board of Supervisors and the Taxpayers of Woodbury County

FROM: Ed Gilliland, Human Resources Director

SUBJECT: Memorandum of Personnel Transactions

DATE: August 16, 2016

For the August 16, 2016 meeting of the Board of Supervisors and the Taxpayers of Woodbury County the Memorandum of Personnel Transactions will include:

- 1) Secondary Roads Temporary Summer Laborer, End of Temporary Work.
- 2) County Sheriff Deputy, from Class 2 to Class 1.

A handwritten signature in black ink, appearing to read "Ed Gilliland". The signature is written in a cursive, somewhat stylized font.

Thank you

HUMAN RESOURCES DEPARTMENT

WOODBURY COUNTY, IOWA

DATE: August 16, 2016

AUTHORIZATION TO INITIATE HIRING PROCESS

DEPARTMENT	POSITION	ENTRY LEVEL	APPROVED	DISAPPROVED
Emergency Management	Emergency Management Coordinator	Wage Plan: \$45,395 to \$55,000/year		
	*Please see attached memo.			

Chairman, Board of Supervisors



Sheriff Dave Drew, Commission Chair

OFFICE: The Security Institute
4647 Stone Ave
Sioux City, IA 51106

MAIL: 620 Douglas Rm 103
Sioux City, IA 51101

10 Aug 2016

To the Woodbury County Board of Supervisors & Human Resources Department,

The Woodbury County Emergency Management Commission respectfully requests discussion and action on the authorization to hire for Emergency Management Coordinator, effective August 17, 2016. We request this be placed on the agenda for the Tuesday, August 16, 2016 Woodbury County Board of Supervisors meeting. Thank you.

Sincerely,

Sheriff Dave Drew - Commission Chair

Cc: file

WOODBURY COUNTY, IOWA

RESOLUTION NO. _____

A RESOLUTION THANKING AND COMMENDING

Jean Jessen

FOR HER SERVICE TO WOODBURY COUNTY

WHEREAS, Jean Jessen has capably served Woodbury County as an employee of the Woodbury County Auditor Office for 30 years from July 29, 1986 to September 30, 2016; and

WHEREAS, the service given by Jean Jessen as a Woodbury County employee, has been characterized by her dedication to the best interests of the citizens of Woodbury County; and

NOW THEREFORE, BE IT RESOLVED BY THE BOARD OF SUPERVISORS OF WOODBURY COUNTY, IOWA that the undersigned members of this Board thanks and commends Jean Jessen for her years of service to Woodbury County; and

BE IT FURTHER RESOLVED that it is the wish of all those signing below that the future hold only the best for this very deserving person, Jean Jessen.

BE IT SO RESOLVED this 16th day of August, 2016.

WOODBURY COUNTY BOARD OF SUPERVISORS

Jeremy J. Taylor, Chairman

Jaclyn D. Smith, Member

Larry D. Clausen, Member

Mark A. Monson, Member

Matthew A. Ung, Member

Attest:

Patrick F. Gill, Woodbury County Auditor

Resolution No._____

Resolution Honoring Deputy Brad Rose

Whereas, Deputy Brad Rose recently delivered papers to individuals who were going through medical hardship and treated the couple in need with dignity and respect in serving in a capacity that showed care, and

Whereas, Deputy Rose sought to personally give resources, financial help, and affirmation of the couple’s humanity during this hard time with understanding so that they wrote a letter and this story was featured on the local news,

Whereas, Deputy Rose has served the Sheriff’s Office for 14 years with distinction in the Civil Division,

Whereas, this is but one action among many that reflect great credit upon local law enforcement as an effective purveyor of public trust, safety, and civic duty, and

Whereas, Deputy Rose’s actions are indicative of the commitment of Woodbury County to provide high-quality service to its citizens,

NOW, THEREFORE, BE IT RESOLVED BY THE BOARD OF SUPERVISORS OF WOODBURY COUNTY, IOWA, that the undersigned members of this Board thank and commend Deputy Brad Rose for his dedication to duty and a reminder to us all of the way in which law enforcement touches lives on a daily basis; and

BE IT FURTHER RESOLVED that it is the wish of those signing below that the future hold only the best for this very deserving person, Brad Rose.

BE IT SO RESOLVED this 16th day of August, 2016.

WOODBURY COUNTY BOARD OF SUPERVISORS

Jeremy J. Taylor, Chairman

Jaclyn D. Smith, Member

Larry D. Clausen, Member

Mark A. Monson, Member

Matthew A. Ung, Member

Attest:

Patrick F. Gill, Woodbury County Auditor

WOODBURY COUNTY BOARD OF SUPERVISORS AGENDA ITEM(S) REQUEST FORM

Date: August 3, 2016 Weekly Agenda Date: August 16, 2016

ELECTED OFFICIAL / DEPARTMENT HEAD / CITIZEN: John Pylelo, Director Planning and Zoning

WORDING FOR AGENDA ITEM:

The approval of a resolution approving the Final Platting for Deer Run Addition - a minor subdivision and authorization of Chairman's signature upon said resolution.

ACTION REQUIRED:

- Approve Ordinance
- Approve Resolution
- Approve Motion
- Give Direction
- Other: Informational
- Attachments

EXECUTIVE SUMMARY:

See attached narrative, related documentation and a copy of the proposed final platting.

BACKGROUND:

See attached narrative, related documentation and a copy of the proposed final platting.

FINANCIAL IMPACT:

Administrative expenses offset by subdivision application filing fees.

IF THERE IS A CONTRACT INVOLVED IN THE AGENDA ITEM, HAS THE CONTRACT BEEN SUBMITTED AT LEAST ONE WEEK PRIOR AND ANSWERED WITH A REVIEW BY THE COUNTY ATTORNEY'S OFFICE?

Yes No

RECOMMENDATION:

Zoning Commission and Staff recommends you approve the Final Platting for Deer Run Addition - a minor subdivision and authorize your of Chairman's signature upon said resolution.

ACTION REQUIRED / PROPOSED MOTION:

A Motion to approve the Final Platting for Deer Run Addition - a minor subdivision and authorization of the Chairman's signature upon said resolution conditioned upon the recording of a Paving Agreement meeting County Paving Policies.

To: Board of Supervisors
From: John Pylelo – Planning and Zoning Director
Re: Supervisor’s Meeting Agenda of Tuesday August 16, 2016
Date: August 9, 2016

Application Background, Location and Zoning

Kathy L. Robley, Executor of the Estate of Dale Raphael Dice, has filed a subdivision application and final platting. The platting proposes to subdivide a 25.09 acre parcel into two (2) lots. The intent is to create independent parcels for the existing building site and the remaining farm ground as part of the probate administration process for the estate. No additional residential development is proposed. Any additional residential development of the lots would require a re-zoning procedure.

The parent parcel lies within rural Woodbury County on the northern side of Elk Creek road approximately 1.2 miles northeast of Sergeant Bluff. The closest intersection is 0.7 miles to the northwest at Elk Creek Road and Glen Ellen Road. The parcel is accessed by the driveway addressed 2025 Elk Creek Road.

The parent parcel is zoned AP (Agricultural Preservation). The parent parcel is not located within any special flood hazard area. The parcel is located within the Farmer’s Drainage Ditch. The current and proposed use of the parent parcel and its structures are permitted under Woodbury County zoning ordinances.

CSR

The primary uses of the parent parcel are residential and agricultural. CSR value for the row crop area on the parcel has an average unadjusted CSR2 value of 51.89. This value is below the threshold where county policy discourages subdivision platting approval.

Zoning Commission Recommendation:

On July 19, 2016 the Supervisors referred the application to the Zoning Commission for public hearing and recommendation. On July 25, 2016 the hearing was held. The Commissioner’s voted to recommend final plat approval subject to the following conditions:

- 1.) A paving agreement be recorded meeting county paving policy; and
- 2.) Certain platting certification changes be made. The final platting provided includes those changes.

Staff Recommendation:

Staff concurs with the Zoning Commissions conditional recommendation.

WOODBURY (E.Pt)

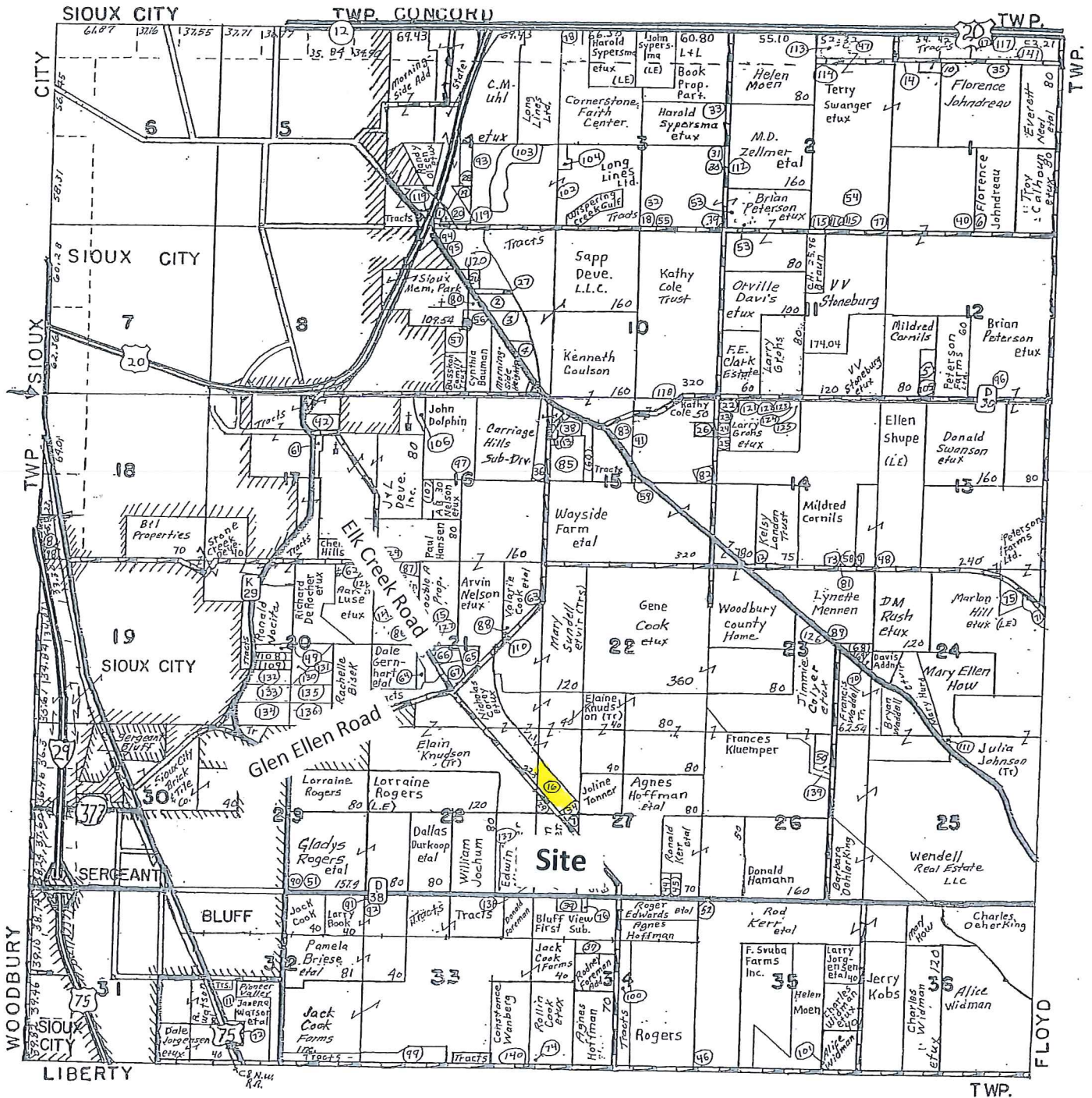
Deer Run Addition – a 2 Lot Minor Subdivision

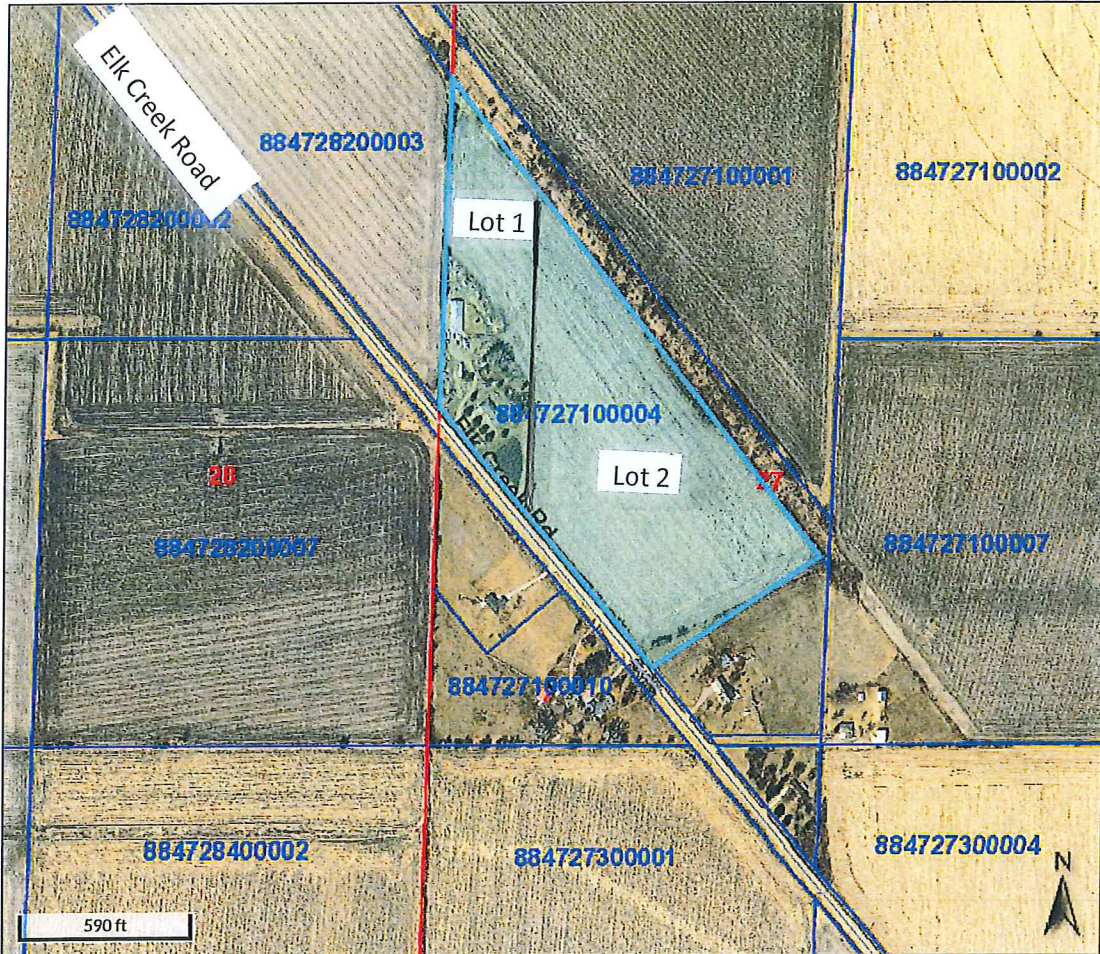
GIS Parcel #884727100004

25.09 Acres Zoned AP (Agricultural Preservation)

Portion of the W 1/2 NW 1/4 Section 27 Woodbury Township

2025 Elk Creek Road, Sergeant Bluff





Overview



Legend

- Roads
- Corp Boundaries
- Townships
- Sections
- Parcels

Parcel ID	884727100004	Alternate ID	000000000827160	Owner Address	DICE DALER
Sec/Twp/Rng	27-88-47	Class	A		2025 ELK CREEK RD
Property Address	2025 ELK CREEK RD	Acreage	25.09		SERGEANT BLUFF, IA 51054
	WOODBURY				

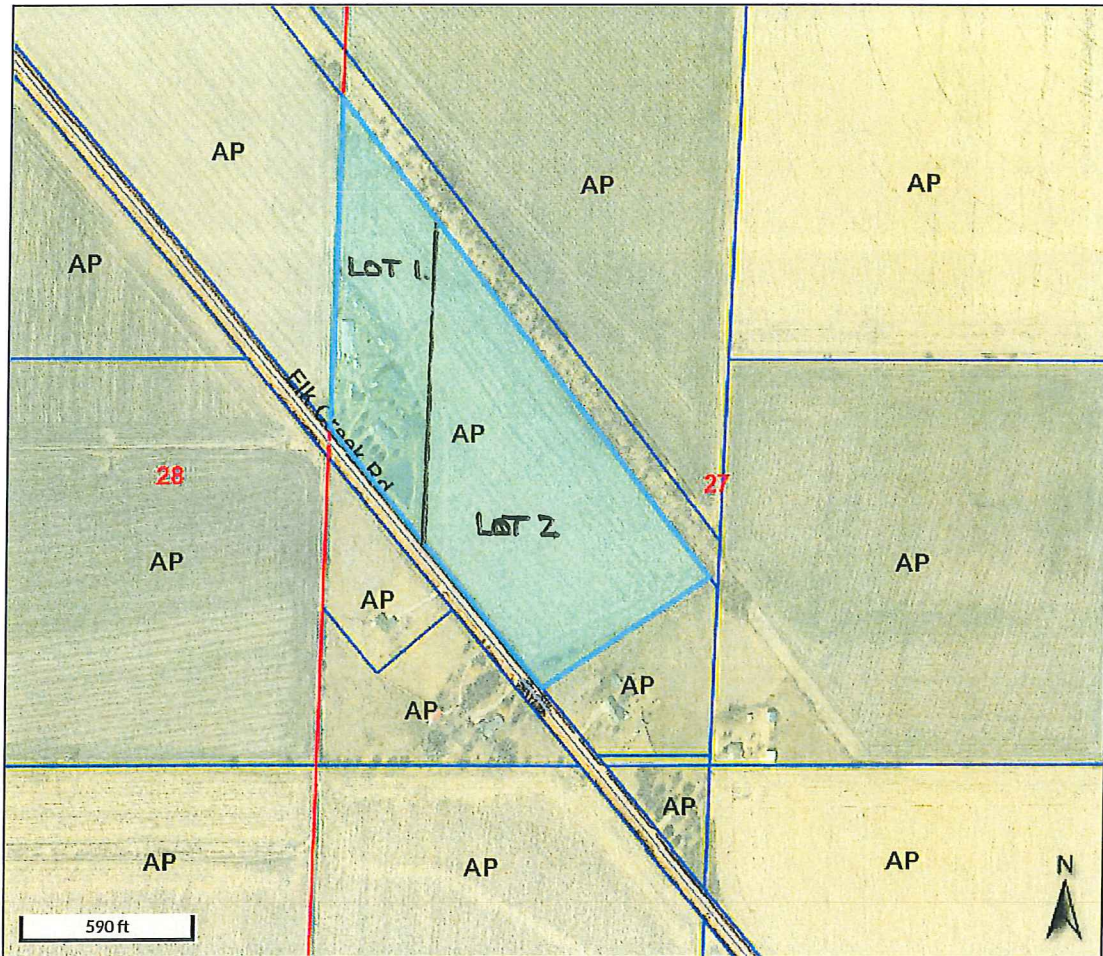
District 039 WOODBURY SGT BLUFF LUTON COMM
 Brief Tax Description WOODBURY TOWNSHIP
 EX S 33 FT E OF C/L
 ROAD & EX SW OF ROAD
 & EX IRREG TCT 270
 .35 FT X 693.2 FT
 X 45 FT X 549 FT X 4
 19 FT SE COR SW OF R
 R W 1/2 NW 27-88-47

(Note: Not to be used on legal documents)

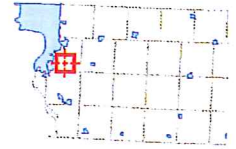
Date created: 7/7/2016

Developed by
The Schneider Corporation

Deer Run Addition – a 2 Lot Minor Subdivision
GIS Parcel #884727100004
25.09 Acres Zoned AP (Agricultural Preservation)
Portion of the W ½ NW ¼ Section 27 Woodbury Township
2025 Elk Creek Road, Sergeant Bluff



Overview



Legend

- Roads
- Corp Boundaries
- Townships
- Sections
- Parcels
- County Zoning**
- AE
- AE-PD
- AP
- AP-PD
- GC
- GC-PD
- GI
- GI-PD
- HC
- HC-PD
- LI-PD
- LI
- NR-PD
- SR
- SR-PD
- WR

Parcel ID	884727100004	Alternate ID	00000000827160	Owner Address	DICE DALER
Sec/Twp/Rng	27-88-47	Class	A		2025 ELK CREEK RD
Property Address	2025 ELK CREEK RD	Acreage	25.09		SERGEANT BLUFF, IA 51054
	WOODBURY				

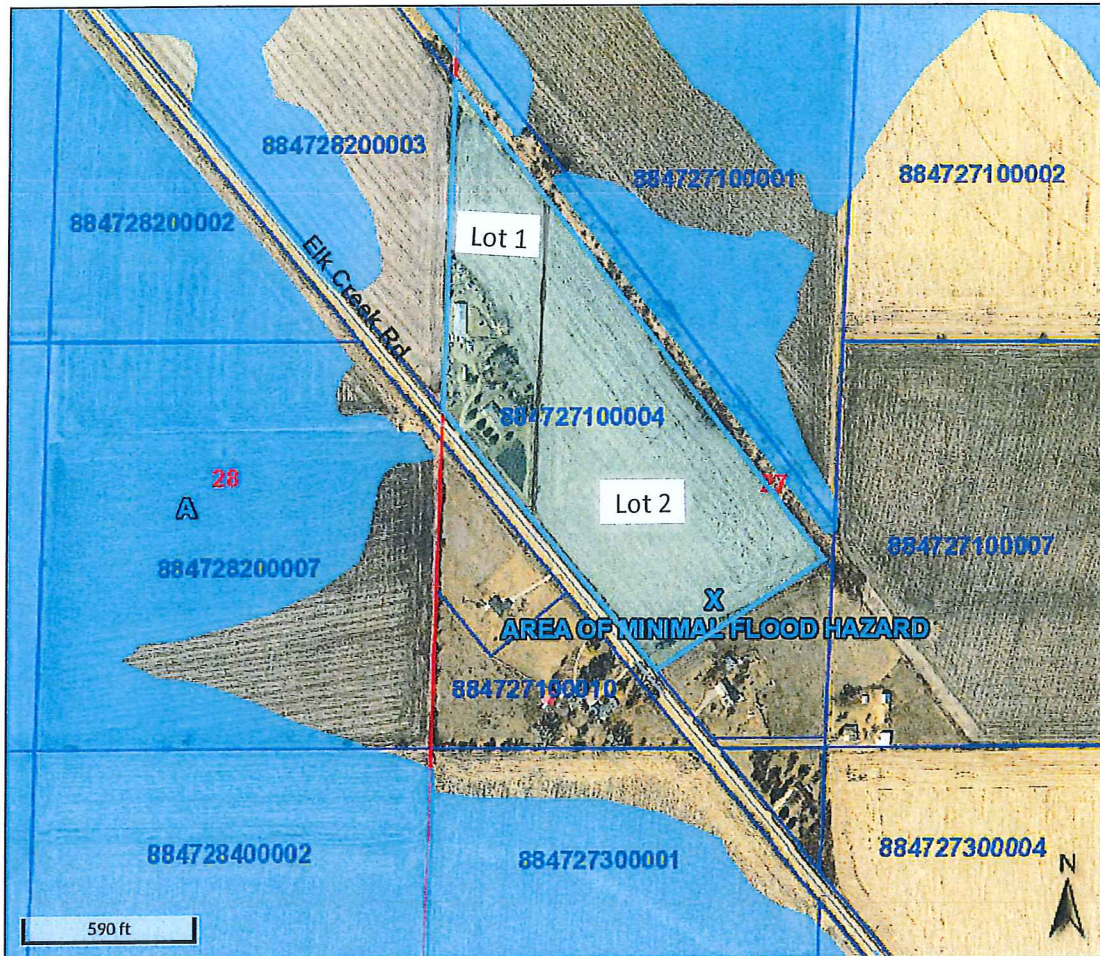
District 039 WOODBURY SGT BLUFF LUTON COMM
 Brief Tax Description WOODBURY TOWNSHIP
 EX S 33 FTE OF C/L
 ROAD & EX SW OF ROAD
 & EX IRREG TCT 270
 .35 FT X 693.2 FT
 X 45 FT X 549 FT X 4
 19 FT SECORSW OF R
 RW 1/2 NW 27-88-47

(Note: Not to be used on legal documents)

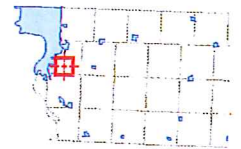
Date created: 7/7/2016



Deer Run Addition – a 2 Lot Minor Subdivision
GIS Parcel #884727100004
25.09 Acres Zoned AP (Agricultural Preservation)
Portion of the W 1/2 NW 1/4 Section 27 Woodbury Township
2025 Elk Creek Road, Sergeant Bluff



Overview



Legend

- Roads
- ▭ Corp Boundaries
- ▭ Townships
- ▭ Sections
- ▭ Parcels
- FEMA Flood Map**
- A,
- AE,
- AE, FLOODWAY
- AH,
- AO,
- X, 0.2 PCT ANNUAL CHANCE FLOOD HAZARD
- X, AREA WITH REDUCED FLOOD RISK DUE TO LEVEE

Parcel ID	884727100004	Alternate ID	00000000827160	Owner Address	DICE DALE R
Sec/Twp/Rng	27-88-47	Class	A		2025 ELK CREEK RD
Property Address	2025 ELK CREEK RD	Acreage	25.09		SERGEANT BLUFF, IA 51054
	WOODBURY				

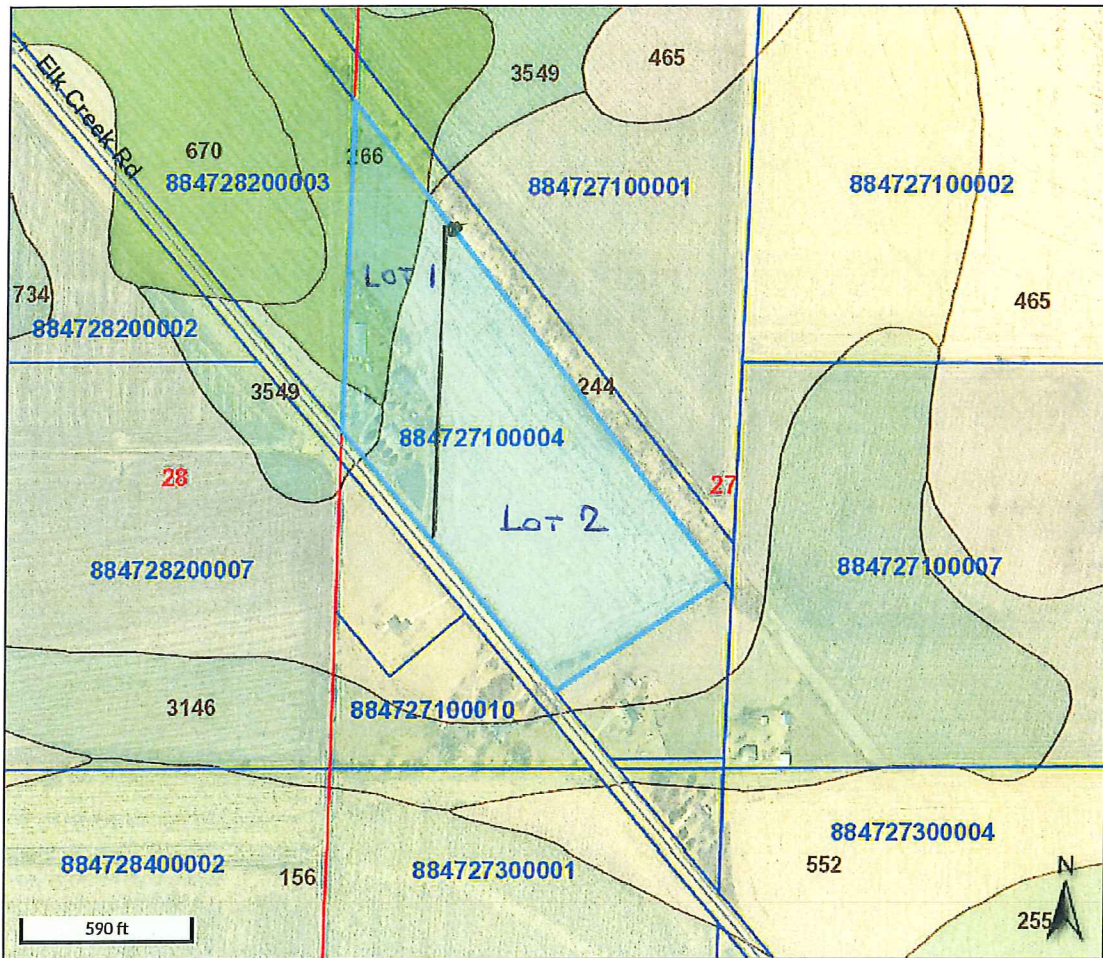
District 039 WOODBURY SGT BLUFF LUTON COMM
 Brief Tax Description WOODBURY TOWNSHIP
 EX S 33 FTE OF C/L
 ROAD & EX SW OF ROAD
 & EX I RREG TCT 270
 .35 FT X 693.2 FT
 X 45 FT X 549 FT X 4
 19 FT SEC OR SW OF R
 R W 1/2 NW 27-88-47

(Note: Not to be used on legal documents)

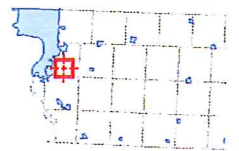
Date created: 7/7/2016

Developed by
 The Schneider Corporation

**Deer Run Addition – a 2 Lot Minor Subdivision
 GIS Parcel #884727100004
 25.09 Acres Zoned AP (Agricultural Preservation)
 Portion of the W 1/2 NW 1/4 Section 27 Woodbury Township
 2025 Elk Creek Road, Sergeant Bluff**



Overview



Legend

- Roads
- Soils**
- 0.000000 - 5.000000
- 5.000001 - 20.000000
- 20.000001 - 30.000000
- 30.000001 - 40.000000
- 40.000001 - 50.000000
- 50.000001 - 60.000000
- 60.000001 - 70.000000
- 70.000001 - 80.000000
- 80.000001 - 90.000000
- 90.000001 - 100.000000
- ▭ Corp Boundaries
- ▭ Townships
- ▭ Sections
- ▭ Parcels

Parcel ID	884727100004	Alternate ID	00000000827160	Owner Address	DICE DALER
Sec/Twp/Rng	27-88-47	Class	A		2025 ELK CREEK RD
Property Address	2025 ELK CREEK RD	Acreage	25.09		SERGEANT BLUFF, IA 51054
	WOODBURY				
District	039 WOODBURY SGT BLUFF LUTON COMM				
Brief Tax Description	WOODBURY TOWNSHIP EX S 33 FTE OF C/L ROAD & EX SW OF ROAD & EX I RREG TCT 270 .35 FT X 693.2 FT X 45 FT X 549 FT X 4 19 FT SEC OR SW OF R R W 1/2 NW 27-88-47				

Deer Run Addition – a 2 Lot Minor Subdivision
GIS Parcel #884727100004
25.09 Acres Zoned AP (Agricultural Preservation)
Portion of the W ½ NW ¼ Section 27 Woodbury Township
2025 Elk Creek Road, Sergeant Bluff



Summary

Parcel ID	884727100004	
Gross Acres	25.09	
ROW Acres	0.00	
Gross Taxable Acres	25.09	
Exempt Acres	0.00	
Net Taxable Acres	25.09	(Gross Taxable Acres - Exempt Land)
Average Unadjusted CSR2	51.89	(1301.97 CSR2 Points / 25.09 Gross Taxable Acres)
Agland Active Config	2013 NonCrop	

Sub Parcel Summary

Description	Acres	CSR2	Gross CSR2 Points	Assessed CSR2 Points
100% Value	21.61	51.13	1,104.99	1,104.99
Non-Crop	3.48	56.60	196.98	121.09
Total	25.09		1,301.97	1,226.08

Soil Summary

Description	SMS	Soil Name	CSR2	Unadjusted Acres	Unadjusted CSR2 Points	Spot & Line Acres	Adjusted Acres	Non Crop CSRP Reduct	Adjusted CSR2 Points
100% Value	244	BLEND SILTY CLAY, 0 TO 2 PERCENT SLOPES, RARELY FLOODED	47.00	18.53	870.91	0.00	18.53	0.00	870.91
100% Value	266	SMITHLAND SILTY CLAY LOAM, 0 TO 2 PERCENT SLOPES, OCCASIONAL	76.00	3.08	234.08	0.00	3.08	0.00	234.08
Non-Crop	244	BLEND SILTY CLAY, 0 TO 2 PERCENT SLOPES, RARELY FLOODED	47.00	2.09	98.23	0.00	2.09	31.73	66.50
Non-Crop	266	SMITHLAND SILTY CLAY LOAM, 0 TO 2 PERCENT SLOPES, OCCASIONAL	76.00	0.86	65.36	0.00	0.86	30.26	35.10
Non-Crop	3549	MODALE SOILS, 0 TO 2 PERCENT SLOPES, RARELY FLOODED	63.00	0.53	33.39	0.00	0.53	13.90	19.49
				25.09	1,301.97	0.00	25.09	75.89	1,226.08

The accuracy of this information is based on a survey. No

Deer Run Addition – a 2 Lot Minor Subdivision
GIS Parcel #884727100004
25.09 Acres Zoned AP (Agricultural Preservation)
Portion of the W 1/2 NW 1/4 Section 27 Woodbury Township
2025 Elk Creek Road, Sergeant Bluff

ation of
 e of the maps
 : a survey. No

Beacon™ Woodbury County, IA / Sioux City

Summary

Parcel ID 884727100004
 Alternate ID 00000000827160
 Property Address 2025 Elk Creek Rd
 Woodbury
 Sec/Twp/Rng 27-88-47
 Brief Legal Description WOODBURY TOWNSHIP EX S 33 FT E OF C/L ROAD & EX SW OF ROAD & EX I RREG TCT 270 .35 FT X 693.2 FT X 45 FT X 549 FT X 4 19 FT SE COR SW OF R R W 1/2 NW 27-88-47
 (Note: Not to be used on legal documents)
 Document(s) AFF: 704-10279 (7/15/2009)
 Gross Acres 25.09
 Net Acres 25.09
 Exempt Acres 0.00
 CSR 1226.08
 Class A - Agriculture; AD - Unknown
 Tax District 039 WOODBURY SGT BLUFF LUTON COMM
 School District SGT BLUFF LUTON



Owner

Primary Owner
 (Deed Holder)
 Dice Dale R

Secondary Owner

2025 Elk Creek Rd
 Sergeant Bluff, IA 51054

Land

Lot Area 25.09 Acres; 1,092,920 SF

Residential Dwellings

Deer Run Addition – a 2 Lot Minor Subdivision
GIS Parcel #884727100004
25.09 Acres Zoned AP (Agricultural Preservation)
Portion of the W 1/2 NW 1/4 Section 27 Woodbury Township
2025 Elk Creek Road, Sergeant Bluff

Residential Dwelling	
Occupancy	Single-Family / Owner Occupied
Style	1 Story Brick
Architectural Style	N/A
Year Built	1970
Condition	Normal
Grade what's this?	3+10
Roof	Asph / Hip
Flooring	HARDWOOD/L
Foundation	Conc
Exterior Material	Brk
Interior Material	Drwl
Brick or Stone Veneer	
Total Gross Living Area	2,366 SF
Attic Type	None;
Number of Rooms	7 above; 0 below
Number of Bedrooms	3 above; 0 below
Basement Area Type	Full
Basement Area	2,366
Basement Finished Area	
Plumbing	2 Base Plumbing (Full ; 1 Three Quarter Bath;
Appliances	1 Oven - Single; 1 Dishwasher; 1 Range Unit;
Central Air	Yes
Heat	Yes
Fireplaces	1 Masonry;
Porches	1S Frame Open (270 SF);
Decks	
Additions	
Garages	604 SF - Att Brick (Built 1970);

Agricultural Buildings

Plot #	Type	Description	Width	Length	Year Built	Building Count
0	Broiler House	BROODER HOUSE	40	100	1972	1

Sales

Date	Seller	Buyer	Recording	NUTC	Type	Multi Parcel	Amount
12/30/1899	DICE DALE R & JEANNE C	DICE DALE R	704/10279	NO CONSIDERATION	Deed		\$0.00

+

Valuation

	2015	2014	2013	2012
Classification	Agricultural	Agricultural	Agricultural	Agricultural
+ Assessed Land Value	\$55,540	\$55,540	\$62,240	\$40,900
+ Assessed Building Value	\$2,710	\$3,660	\$3,660	\$2,860
+ Assessed Dwelling Value	\$215,680	\$201,570	\$201,570	\$201,570
+ Exempt Value	\$0	\$0	\$0	\$0
= Gross Assessed Value	\$273,930	\$260,770	\$267,470	\$245,330
- Exempt Value	\$0	\$0	\$0	\$0

	2015	2014	2013	2012
= Net Assessed Value	\$273,930	\$260,770	\$267,470	\$245,330

Treasurer Link

[Click here to view tax information for this parcel](#)

Iowa Land Records

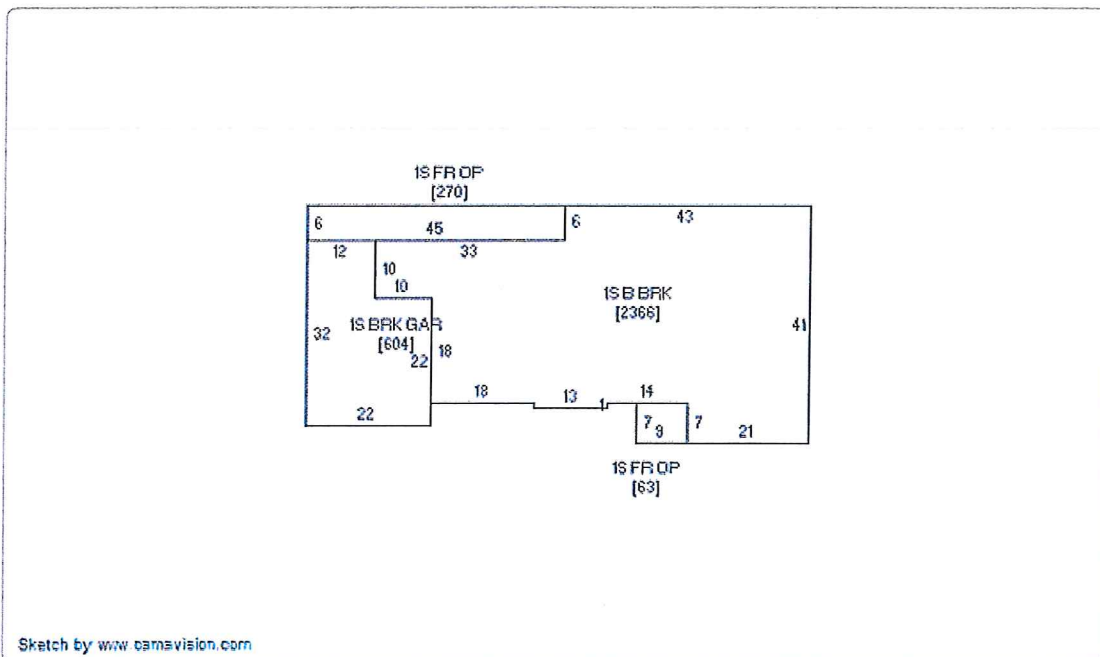
Book-Page: 704-10279 (7/15/2009)

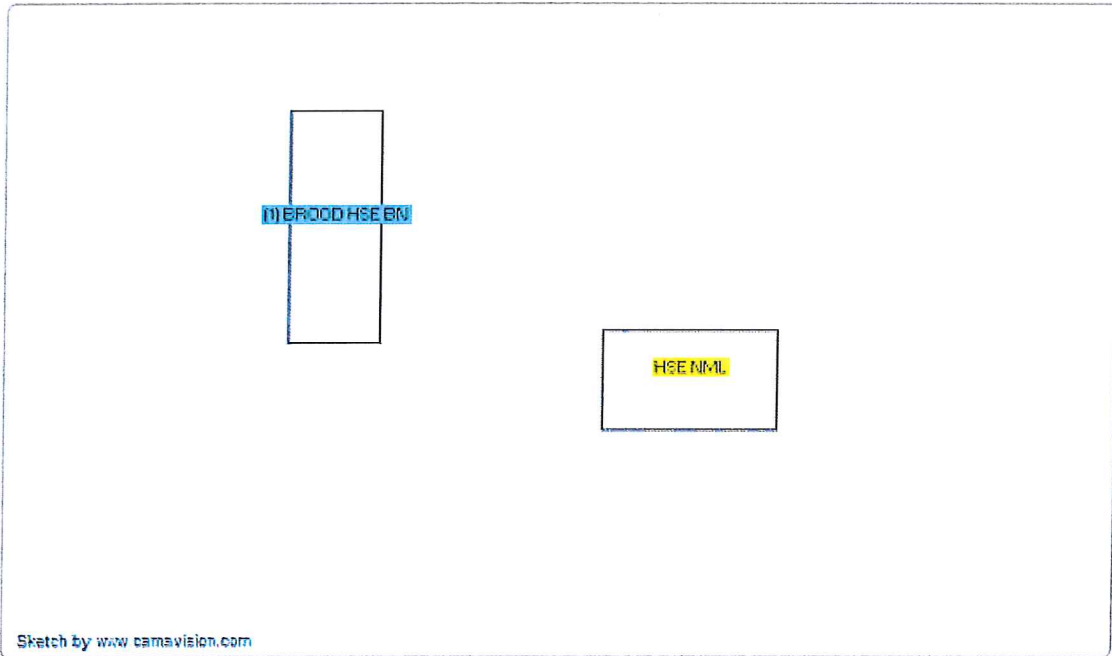
Data for Woodbury County between Beacon and Iowa Land Records is available on the Iowa Land Records site beginning in 1994.
For records prior to 1994, contact the County Recorder or Customer Support at www.IowaLandRecords.org.

Photos



Sketches





No data available for the following modules: Owner, Commercial Buildings, Yard Extras, Permits, Valuation (Sioux City).

The maps and data available for access at this website are provided "as is" without warranty or any representation of accuracy, timeliness, or completeness. There are no warranties, expressed or implied, as to the appropriate use of the maps and data or the fitness for a particular purpose. The maps and associated data at this website do not represent a survey. No liability is assumed for the accuracy of the data delineated on any map, either expressed or implied.

 Developed by
Schneider The Schneider Corporation

RESOLUTION 16-41

RESOLUTION TO WAIVE RIGHT TO REVIEW DEER RUN ADDITION

Councilwoman Carol Clark introduced and caused to be read the following resolution regarding the right to review the Final Plat of Deer Run Addition:

Whereas the City of Sergeant Bluff, Iowa has been presented with the Final Plat of Deer Run Addition, a Minor Subdivision to Woodbury County, Iowa; and

Whereas said Subdivision is within the City's extraterritorial review area; and

Whereas City Code provides the City may waive its right to review the Subdivision; and

Whereas being fully informed on the matter, the Sergeant Bluff City Council takes the following action:

NOW THEREFORE BE IT RESOLVED that the City of Sergeant Bluff, upon due consideration, declines to review and waives the right to extraterritorial review of said plat.

Motion to adopt said resolution made by Councilwoman Carol Clark, seconded by Councilman Ron Hanson. Where upon Mayor Winkel called for a roll call vote and Council voted as follows:

AYE: Gaukel, Clark, Hanson, Linafelter

NAY: None

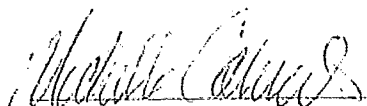
ABSENT: Cleveland

PASSED AND APPROVED this 11th day of July, 2016.



Jon Winkel, Mayor

ATTEST:


Michelle Colvert, City Clerk

John Pylelo - Deer Run Addition - July 25, 2016 Agenda item

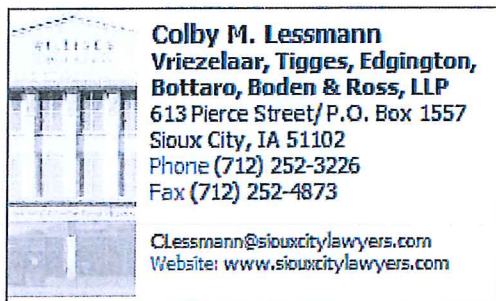
From: Colby Lessmann <clessmann@siouxcitylawyers.com>
To: "jpylelo@woodburycountyiowa.gov"
<jpylelo@woodburycountyiowa.gov>
Date: 7/14/2016 3:04 PM
Subject: Deer Run Addition - July 25, 2016 Agenda item
CC: Ryan Ross <rross@siouxcitylawyers.com>
Attachments: Sgt Bluff Resolution Waive Right to Review-Deer Run Addition.pdf

John,

Attached please find the Waiver of Right to Review by Sgt. Bluff re: the Deer Run Addition.

Are there any other documents you need from us prior to the July 25 hearing?

I talked to my client, Kathy Robley, and I will be present at the hearing in her place to answer any questions regarding the proposed Deer Run Addition.

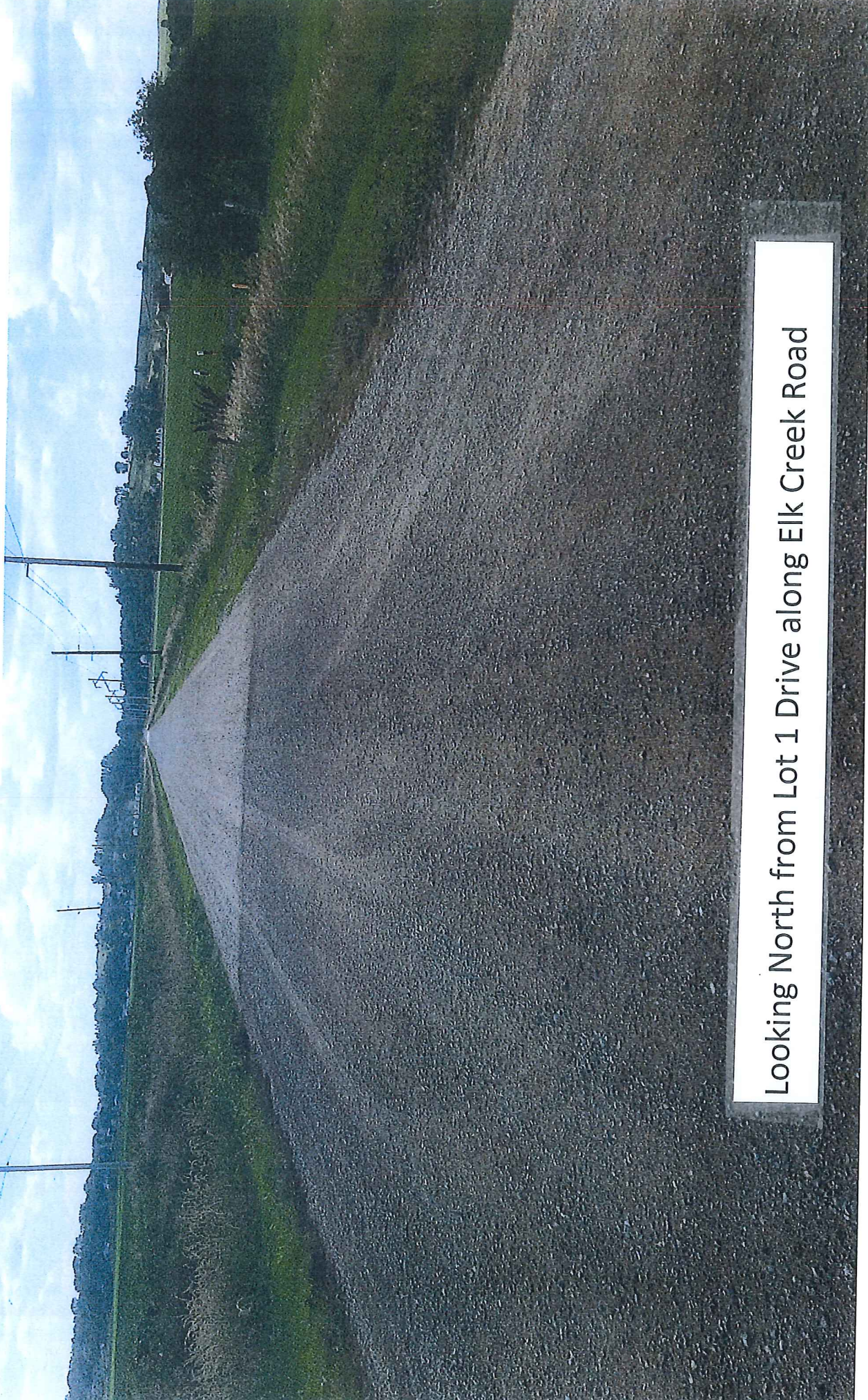


Deer Run Addition – a 2 Lot Minor Subdivision
GIS Parcel #884727100004
25.09 Acres Zoned AP (Agricultural Preservation)
Portion of the W 1/2 NW 1/4 Section 27 Woodbury Township
2025 Elk Creek Road, Sergeant Bluff

2025



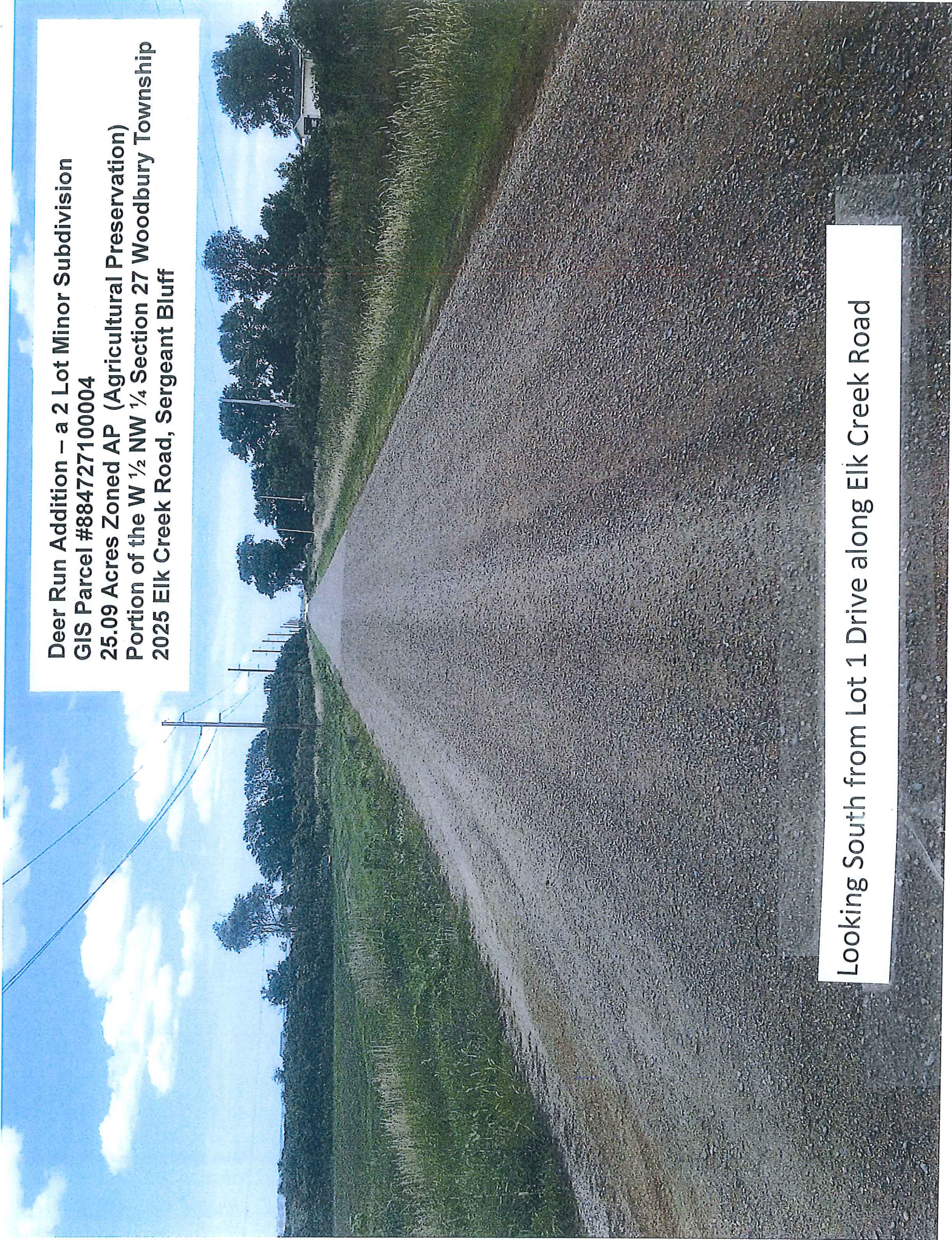
Deer Run Addition – a 2 Lot Minor Subdivision
GIS Parcel #884727100004
25.09 Acres Zoned AP (Agricultural Preservation)
Portion of the W ½ NW ¼ Section 27 Woodbury Township
2025 Elk Creek Road, Sergeant Bluff



Looking North from Lot 1 Drive along Elk Creek Road

**Deer Run Addition – a 2 Lot Minor Subdivision
GIS Parcel #884727100004
25.09 Acres Zoned AP (Agricultural Preservation)
Portion of the W 1/2 NW 1/4 Section 27 Woodbury Township
2025 Elk Creek Road, Sergeant Bluff**

Looking South from Lot 1 Drive along Elk Creek Road



Deer Run Addition – a 2 Lot Minor Subdivision
GIS Parcel #884727100004
25.09 Acres Zoned AP (Agricultural Preservation)
Portion of the W 1/2 NW 1/4 Section 27 Woodbury Township
2025 Elk Creek Road, Sergeant Bluff



Outbuilding Lot One Looking Northeast from Lot 1 Drive

Deer Run Addition – a 2 Lot Minor Subdivision
GIS Parcel #884727100004
25.09 Acres Zoned AP (Agricultural Preservation)
Portion of the W 1/2 NW 1/4 Section 27 Woodbury Township
2025 Elk Creek Road, Sergeant Bluff




Outbuilding and Residence Lot 1 Looking Northeast from Lot 1 Drive

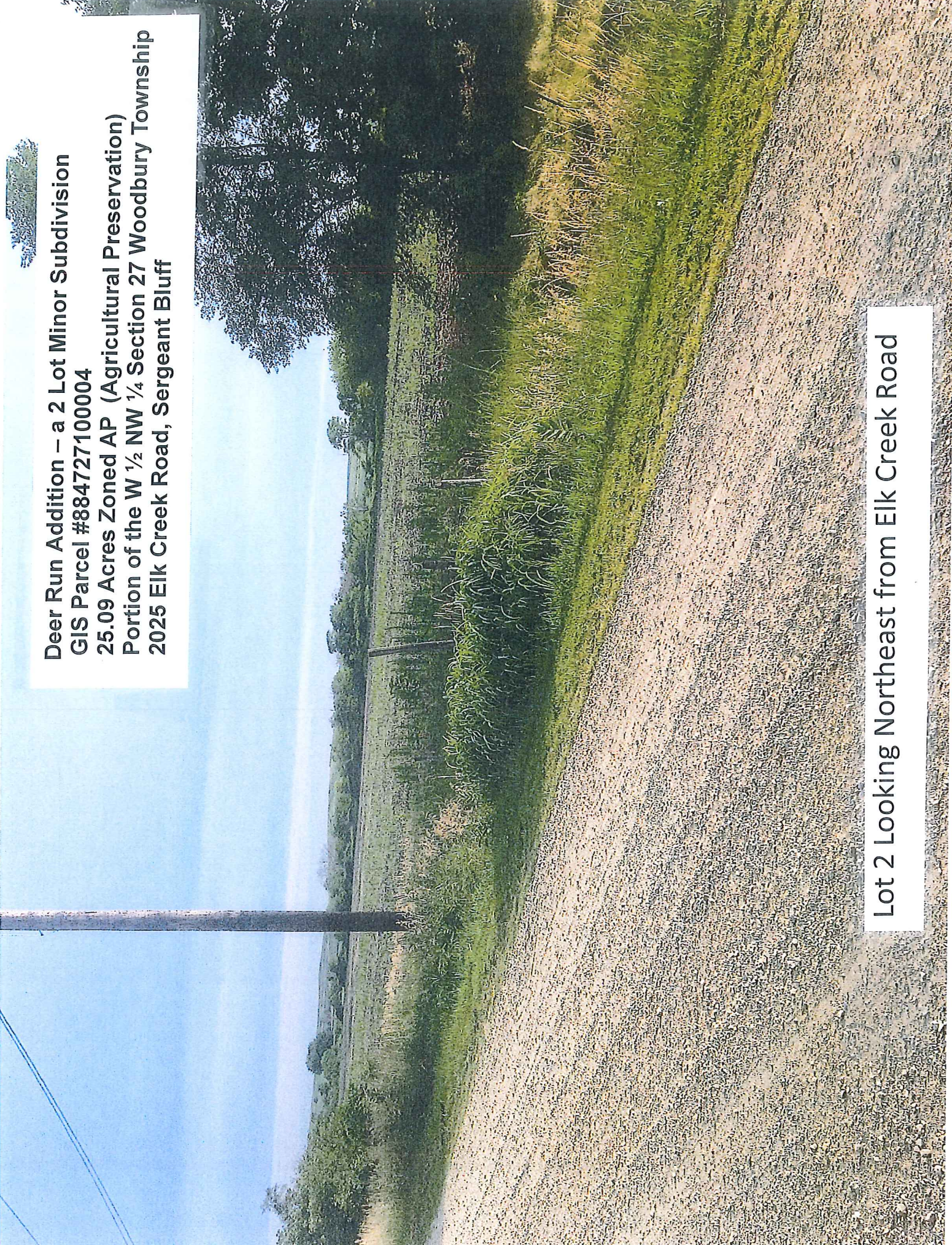
Residence Lot 1 Looking East from Lot 1 Drive



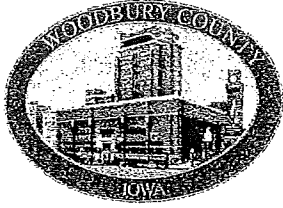
Deer Run Addition – a 2 Lot Minor Subdivision
GIS Parcel #884727100004
25.09 Acres Zoned AP (Agricultural Preservation)
Portion of the W 1/2 NW 1/4 Section 27 Woodbury Township
2025 Elk Creek Road, Sergeant Bluff



Deer Run Addition – a 2 Lot Minor Subdivision
GIS Parcel #884727100004
25.09 Acres Zoned AP (Agricultural Preservation)
Portion of the W 1/2 NW 1/4 Section 27 Woodbury Township
2025 Elk Creek Road, Sergeant Bluff



Lot 2 Looking Northeast from Elk Creek Road



Woodbury County Secondary Roads Department

759 E. Frontage Road • Merville, Iowa 51039
Telephone (712) 279-6484 • (712) 873-3215 • Fax (712) 873-3235

COUNTY ENGINEER
Mark J. Nahra, P.E.
mnahra@sioux-city.org

ASSISTANT TO THE COUNTY ENGINEER
Benjamin T. Kusler, E.I.T.
bkusler@sioux-city.org

SECRETARY
Tish Brice
tbrice@sioux-city.org

To: John Pylelo, Woodbury County Planning and Zoning Administrator

From: Mark J. Nahra, County Engineer

Date: August 3, 2016

Subject: Deer Run Addition- A minor subdivision

The Secondary Road Department has reviewed the final plat for the above referenced subdivision forwarded with your memo dated July 14, 2016.

I am offering the following comments for your consideration.

- We checked the closure on the plat and found it in compliance with the requirements for the full subdivision of 1 in 10,000 and 1 in 5,000 for each lot as required by Section 355.8 of the Code of Iowa.
- I reviewed the parcel for access issues. A new driveway could be placed anywhere along the frontage of Lot 2 along Elk Creek Road. A culvert will be required. Whenever the landowner wants a driveway for Lot 2, the owner should call the county for a permit for a new driveway.
- I have no other concerns or issues with this subdivision.

If there are any more questions or issues that arise later, please contact this office.

Cc: File

WOODBURY COUNTY BOARD OF SUPERVISORS AGENDA ITEM(S) REQUEST FORM

Date: 8-12-16

Weekly Agenda Date: 8-16-16

ELECTED OFFICIAL / DEPARTMENT HEAD / CITIZEN: Dennis Butler, Finance Director

WORDING FOR AGENDA ITEM:

ACTION REQUIRED:

Approve Ordinance

Approve Resolution

Approve Motion

Give Direction

Other: Informational

Attachments

EXECUTIVE SUMMARY:

After last Tuesdays discussion involving the Sioux Rivers, I have included information involving taxes (there was a correction on taxes levied), population and unexpected budget and a response for Woodbury County Board Chair Jeremy Taylor. Also included are a couple of e-mails received from Shane Walters, CEO for the Region, on numbers of clients served per County.

BACKGROUND:

FINANCIAL IMPACT:

No impact at this time.

IF THERE IS A CONTRACT INVOLVED IN THE AGENDA ITEM, HAS THE CONTRACT BEEN SUBMITTED AT LEAST ONE WEEK PRIOR AND ANSWERED WITH A REVIEW BY THE COUNTY ATTORNEY'S OFFICE?

Yes No

RECOMMENDATION:

ACTION REQUIRED / PROPOSED MOTION:

No action at this time as this is only for information.

To: Jeremy Taylor, Chairman of the Board of Supervisors

From: Dennis D. Butler, Finance/Operations Controller

RE: Sioux Rivers Financial Information

Date: August 11, 2016

As requested, here in the financial information in regards to the Sioux Rivers Region.

Attachment A shows the three fiscal years's history concerning property taxes, carryovers in excess of the 25% cash reserve in fund 110 and the equalization payment made in FY 2015 that was the last payment made to counties).

Shown below is the the history for four fiscal years comparing budget to expenditures and unspent budget for each fiscal year.

<u>FY</u>	<u>Budget</u>	<u>Expenditures</u>	<u>Unspent Budget</u>
2013	6,976,540	5,442,551	1,533,989
2014	7,094,686	4,993,564	2,101,121
2015	5,068,400	3,915,040	1,153,360
2016	6,027,390	4,239,272	1,788,118

Also shown below is the tax asking reductions passed by the Sioux Rivers Region Board that was an attempt to reduce the cash reserves to a level of 25% of accrued expenditures.

<u>County</u>	<u>FY of Reductions</u>		<u>Totals</u>
	<u>2017</u>	<u>2018</u>	
Woodbury	633,080	633,080	1,266,160
Sioux	125,021	125,021	250,042
Plymouth	0	0	0
	<u>760,118</u>	<u>760,119</u>	<u>1,520,237</u>

It should be remembered that after the 25% cash reserve is achieved, using reserves for tax reductions as shown could potentially result to a tax increase starting with FY 2019 and beyond.

If there are any questions I am available anytime.

Attachment A

Information on Sioux Rivers Region

<u>County</u>	<u>Three Years Totals</u>		<u>Population**</u>	
	<u>Tax Askings*</u>			
Woodbury County	10,059,178	71.30%	102,271	63.20%
Sioux County	2,957,143	21.00%	34,681	21.40%
Plymouth County	1,091,313	7.70%	24,874	15.40%
Totals	14,107,634	100.00%	161,826	100.00%

Sources:

* Department of Management

** Iowa Association of Counties

1. How much money did Woodbury County pay into Sioux Rivers Region:

	<u>Tax Dollars</u>	<u>Carryover Funds</u>	<u>Equalization Payment</u>	<u>Total</u>
A. 2014-2015 still in County	3,564,086.00	1,015,568.00	1,273,764.18	5,853,418.18
B. 2015-2016	3,564,086.00	2,051,873.00	0.00	5,615,959.00
C. 2016-2017 - Budgeted	2,931,006.00	0.00	0.00	2,931,006.00
D. Current Paid to Date	0.00	0.00	0.00	0.00
E. Owed for Current Year Not Paid	0.00	0.00	0.00	0.00

2. How much money did Sioux County pay into Sioux Rivers Region:

	<u>Tax Dollars</u>	<u>Carryover Funds</u>	<u>Equalization Payment</u>	<u>Total</u>
A. 2014-2015 still in County	1,027,388.00	385,305.00	592,803.00	2,005,496.00
B. 2015-2016	1,027,388.00	653,727.00	0.00	1,681,115.00
C. 2016-2017 - Budgeted	902,367.00	0.00	0.00	902,367.00
D. Current Paid to Date	0.00	0.00	0.00	0.00
E. Owed for Current Year Not Paid	0.00	0.00	0.00	0.00

3. How much money did Plymouth County pay into Sioux Rivers Region:

	<u>Tax Dollars</u>	<u>Carryover Funds</u>	<u>Equalization Payment</u>	<u>Total</u>
A. 2014-2015 still in County	363,771.00	602,080.00	813,832.00	1,779,683.00
B. 2015-2016	363,771.00	283,075.00	0.00	646,846.00
C. 2016-2017 - Budgeted	363,771.00	0.00	0.00	363,771.00
D. Current Paid to Date	0.00	0.00	0.00	0.00
E. Owed for Current Year Not Paid	0.00	0.00	0.00	0.00

Dennis Butler - RE: FY 16 clients service by county

From: Shane Walter <shanew@siouxcounty.org>
To: 'Dennis Butler' <dbutler@woodburycountyiowa.gov>
Date: 8/11/2016 3:56 PM
Subject: RE: FY 16 clients service by county
CC: "Jeremy Taylor (jtaylor@woodburycountyiowa.gov)" <jtaylor@woodburycounty...>

Hi Dennis,

The following numbers are maybe better for your purposes. They still are not entirely accurate (and as yet don't take all services into account due to the complexities of invoicing for group services), but are more reflective of active cases in our CSN database:

Total consumers: 1096 – Woodbury County

 415 – Between Sioux, Plymouth, State Cases and others (Sioux – 123, Plymouth 126, State Cases and other – 166).

These numbers should not be used for anything other than comparison purposes. Please be mindful of the difficulties in quantifying all services in a way that lends itself to this format – remember we are conducting business as a Region – not as individual counties.

Shane

From: Dennis Butler [dbutler@woodburycountyiowa.gov]
Sent: Thursday, August 11, 2016 11:59 AM
To: Shane Walter
Subject: FY 16 clients service by county

I need the number of clients served by the Sioux River Region during FY 2016 by County. If possible I need this by 3 p. m. this afternoon.
Thank you for your assistance.

Dennis Butler - RE: FY 16 clients service by county

From: Jeremy Taylor
To: Dennis Butler; Shane Walter
Date: 8/11/2016 11:02 PM
Subject: RE: FY 16 clients service by county
CC: Mark Loutsch

Mark,

I initially was going to respond in similar manner for my suggestions for Shane in the third person with Shane Cc'd, but thought better of it. I want to try to get beyond that sort of thing.

I do want to say that reading past (and not taking to heart) some of the comments below, I was appreciative of what you provided, Shane. I plan to share all of it with the Board and will do so only in the same way that you requested. If nothing else, the Region and its future is one that I believe we need to be engaged in discussing: if this is a viable thing, how we move on, etc. I will include all of the caveats mentioned.

I understand that you may have had some conversations about potentially moving on from focusing on the issue of space at the TriView Building, Mark, and if so, want to appreciate that we are (hopefully) moving beyond that.

Furthermore, let me reiterate some things in this message that are just not the case and would be clear from a review of our Board meeting. The vast majority of contributors--and consumers--residing within Woodbury County is clearly the case. My point was in light of some of the frustrations with direction and control as relates to several items, at the time requested rent at the TriView Building, in light of the majority of contribution--and yes services, clearly--residing within this county. Perhaps I could have been clearer to stipulate what I was not saying. For example, at no time did I say, "The Region is spending money frivolously."

I was responding to Larry Clausen who insisted for years that we keep the maximum levy, consistently have more than was necessary, spend aggressively toward the end of each year, and justify that same level of spending. My point is simply this: to have taxed to that level resulted in the potential surplus, for lack of a better term. Our Auditor and Budget Analyst consistently saw this, and I believe saw this as a problem. To say that it is only by virtue of regionalization that there is a "savings" is not true. That is not an aspersion toward you folks who recognized this--it's simply making the point that in the past, the Board (Woodbury) inappropriately overtaxed, which is clear to anyone that understands this issue from the fiduciary point of view.

If a college student said he needed from his folks \$1,000 / mo. for food, but only used \$500 for each of the first 9 months by eating conservatively but looked in the last 3 for a way to spend \$7500 by going out to restaurants with the idea that if he didn't hit the same level, the old budget adage of "If we don't spend it, we don't get it," might hold true. Then, to be in a club in which some others say, "Hey, that's not a good practice," and to recognize that those past actions weren't good or healthy, is simply what has happened here.

I hope that helps. Shane, again, thank you for the information today, which I plan to share with the Board in total.

Jeremy

>>> Shane Walter <shanew@siouxcounty.org> 08/11/16 12:50 PM >>>

Dennis,

I will attempt to provide you with those numbers, but I have two of my Service Coordinators out [REDACTED] so that may not happen in the next couple of hours. However, I will attempt to get something to you prior to 3:00. Please remember that raw data can be used to paint an incomplete picture of what is occurring within the Region. Your Board Chair needs to keep this in mind. I could probably help to give some clarity to that snapshot if he contacted me directly – it would be helpful to know what he was going to use this information for. A candid conversation on the topic would be welcomed and could be beneficial to both parties. I need not remind you that Woodbury County is not independent of the Region – it is in fact the biggest contributor to and the biggest beneficiary of Regional expenditures and the vast majority of consumers reside in Woodbury County. We have worked very cooperatively together in the past to plan for the future, including representatives from your Board, in order to meet current and anticipated needs, to meet DHS and legislative mandates to expand services into the Crisis realm and other areas, but it seems that cooperative approach is no longer available to us. Our approach to this must involve careful planning and consideration. It's impossible to plan new or expanded services without stable funding streams, so that obviously necessitates our working together in a cooperative manner. Contrary to what you may hear otherwise, we do have your best

interests at heart. We are attempting to balance the need to be responsible to consumers, DHS/Legislature and the taxpayers. That has always been our approach to doing business and will remain so in the future. Another reminder: When I hear in the news about how the Region is overtaxing Woodbury County and spending money frivolously, I need not remind you that the Regional Board attempted to lower levies in the counties, at my insistence, by double what they were this year – we were asking to provide \$2.4 million over two years in relief to Woodbury County alone - but it was your board representatives that were vehemently opposed to this. We made the case for doing this in order to lower the fund balances in all counties as we are mandated to get to the 25% fund balance threshold. We agree that there is too much money in the pot – it needs to come down, but we need your cooperation to get this accomplished. For your Board to now claim that we are overtaxing seems disingenuous. Please share these thoughts with your Board as you see fit. Thank you.

Shane Walter, CEO, Sioux Rivers Regional MHDS

From: Dennis Butler [dbutler@woodburycountyiowa.gov]
Sent: Thursday, August 11, 2016 11:59 AM
To: Shane Walter
Subject: FY 16 clients service by county

I need the number of clients served by the Sioux River Region during FY 2016 by County. If possible I need this by 3 p. m. this afternoon.
Thank you for your assistance.

	FY15 Contribution			FY16 Contribution			Total		
Sioux	\$	1,027,388	20.73%	\$	1,027,388	20.73%	\$	2,054,776	20.73%
Plymouth	\$	363,800	7.34%	\$	363,800	7.34%	\$	727,600	7.34%
Woodbury	\$	3,564,086	71.93%	\$	3,564,086	71.93%	\$	7,128,172	71.93%
	\$	4,955,274		\$	4,955,274		\$	9,910,548	

Actual

	FY15 Expenditures			FY16 Expenditures			Total		
Sioux	\$	932,730	14.16%	\$	795,318	22.04%	\$	1,728,048	16.94%
Plymouth	\$	1,265,931	19.21%	\$	508,038	14.08%	\$	1,773,969	17.40%
Woodbury	\$	4,390,638	66.63%	\$	2,305,432	63.88%	\$	6,696,070	65.66%
	\$	6,589,299		\$	3,608,788		\$	10,198,087	

WOODBURY COUNTY BOARD OF SUPERVISORS AGENDA ITEM(S) REQUEST FORM

Date: 8/10/2016

Weekly Agenda Date: 8/16/2016

ELECTED OFFICIAL / DEPARTMENT HEAD / CITIZEN: Kenny Schmitz

WORDING FOR AGENDA ITEM:

Woodbury County Buildings - HVAC Systems Information

ACTION REQUIRED:

Approve Ordinance

Approve Resolution

Approve Motion

Give Direction

Other: Informational

Attachments

EXECUTIVE SUMMARY:

A lack of operation, functionality, and the ability to control heating/ cooling systems throughout all County buildings exists. Rectifying these situations would require making a choice of correction, and establishing the best avenue to pursue.

BACKGROUND:

The Courthouse, LEC, and Tosper Hoyt buildings all currently have functional issue's with systems being able to adjust heating & cooling. While some problems are similar there are various problems that may be different at each building. At some point or another, the non-functioning items have to be addressed. Due to the costs associated with HVAC systems it will be necessary to make difficult choices and determine the best path forward.

Option #1- Replace existing Logic Panels at all buildings at one time & adding functionality & tie in large equipment in each building.
Option #2- Upgrade/ replace all system HVAC components throughout the Courthouse and the LEC building in their entirety.

Option #1

Positives: All Logic Panels to all Buildings get replaced at one time. We can communicate with each buildings system.

Negatives: No occupant comfort is addressed, No Rebates available, No energy savings for set-backs or free air cooling, we can interface and view each building system but it most cases still can't control them.

Option #2

Positives: Occupant comfort controls, Potential for Rebates, Energy savings related to set-back, free air cooling. Courthouse & LEC Building HVAC control systems are completely upgraded throughout.

Negatives: Courthouse & LEC are the only two buildings able to be controlled, other buildings are not addressed.

2017 C.I.P. Funding - Buildings combined total HVAC funding is sufficient to provide for only one of the two options listed above.

FINANCIAL IMPACT:

IF THERE IS A CONTRACT INVOLVED IN THE AGENDA ITEM, HAS THE CONTRACT BEEN SUBMITTED AT LEAST ONE WEEK PRIOR AND ANSWERED WITH A REVIEW BY THE COUNTY ATTORNEY'S OFFICE?

Yes No

RECOMMENDATION:

Costs associated with both options should be very close therefore is not necessarily a determining factor in choosing one option over the other. If the Board was interested in completing one of the options Building Services would recommend Option #2. This option completely upgrades and addresses all HVAC temperature control needs in two County buildings.

ACTION REQUIRED / PROPOSED MOTION:

To: Jeremy Taylor, Chairman of the Board of Supervisors

From: Dennis D. Butler, Finance/Operations Controller

RE: Juvenile Detention Revenues

Date: August 12, 2016

Following up a previous Board meeting, I have met with Mark Olsen on revenue projections relating to FY 2016 and FY 2017. The projections and revenues are correct after consultation. Attachment A shows that we will have a shortfall in FY 2016 of \$95,988. Also FY 2017 BIA projections will be short approximately \$67,000. This is the result of no signed contract with the BIA, subsequently there were no housing of juveniles during the months of July and August. A signed contract will be forthcoming.

The good news is that revenue projections were artificially low because our numbers didn't accurately reflect the increase in per-resident cost charged (+50% increase).

I am available at anytime if there are any questions.

Juvenile Detention RevenuesFY 2017Total Revenue Budget:

Dakota County & State of Nebraska	80,000
BIA Contract	260,000
State of Iowa Reimbursement	350,000
Total Budgeted Revenues	<u>690,000</u>

Entity Received from

Dakota County:

BIA Reimbursement:

State of Iowa Reimbursement:

FY 2016Total Revenue Budget:

Dakota County & State of Nebraska	107,550
BIA Contract	400,000
State of Iowa Reimbursement	380,000
Total Budgeted Revenues	<u>887,550</u>

Entity Received from

<u>Date</u>	<u>Entity</u>	<u>Amount</u>	<u>Total</u>
Dakota County & State of Nebraska:			
9-11-15	State of Nebraska	42,000	
11-6-15	State of Nebraska	19,350	
11-19-16	Dakota County	300	
1-4-16	Dakota County	20,550	
3-7-16	State of Nebraska	12,000	
6-15-16	Dakota County	3,750	
	Totals	<u>97,950</u>	97,950

BIA Reimbursement:

7-25-16	BIA Reimbursement	7,123	
7-25-16	BIA Reimbursement	9,153	
7-25-16	BIA Reimbursement	14,800	
7-25-16	BIA Reimbursement	22,332	
7-25-16	BIA Reimbursement	22,903	
7-25-16	BIA Reimbursement	31,471	
7-25-16	BIA Reimbursement	41,146	
7-25-16	BIA Reimbursement	46,061	
7-25-16	BIA Reimbursement	52,350	
?	BIA Reimbursement - Outstanding	100,050	
	Totals		347,389

State of Iowa Reimbursement:

8-28-15	State of Iowa		346,223
---------	---------------	--	---------

Revenue Totals for FY 2016

791,561

Recap for FY 2016

<u>Entity</u>	<u>Budget</u>	<u>Accrued</u>	
		<u>Revenue</u>	<u>Difference</u>
Dakota County & State of Nebraska	107,550	97,950	(9,600)
BIA Reimbursement	400,000	347,389	(52,611)
State of Iowa Reimbursement	380,000	346,223	(33,777)
Total	887,550	791,562	(95,988)

WOODBURY COUNTY JUVENILE DETENTION CENTER

Trosper-Hoyt Bldg.
822 Douglas St. - 4th Floor
Sioux City, Iowa 51101

Phone 712-279-6622
Email: molsen@sioux-city.org
Fax 712-234-2900

6:00 a.m.

6:00 p.m.

August, 2016

August 1, 2016		11
August 2, 2016	11	11
August 3, 2016	11	11
August 4, 2016	11	11
August 5, 2016	11	11
August 6, 2016	11	11
August 7, 2016	11	11
August 8, 2016	11	

The Center averaged 11 youths per day during the 6:00 a.m. head count and 11 during the 6:00 p.m. count for a weekly average of 11 youths.

As of August 8, 2016 five or forty five percent were identified gang members. Two or forty percent were identified as gange members.

We are currently detaining one juvenile from Dakota County. We have received our BIA contract and once approved we will begin to receive the Tribal Native Americans.

Mark Olsen,

Director
WCJDC

August 8, 2016