



**NOTICE OF MEETING OF THE WOODBURY COUNTY BOARD OF SUPERVISORS
(SEPTEMBER 12, 2017) (WEEK 37 OF 2017)**

Live streaming at:
<https://www.youtube.com/user/woodburycountyiowa>

Agenda and Minutes available at:
www.woodburycountyiowa.gov

Rocky L. DeWitt 253-0421 rdewitt@woodburycountyiowa.gov	Marty J. Pottebaum 251-1799 mpottebaum@woodburycountyiowa.gov	Keith W. Radig 560-6542 kradig@woodburycountyiowa.gov	Jeremy J. Taylor 259-7910 jtaylor@woodburycountyiowa.gov	Matthew A. Ung 490-7852 matthewung@woodburycountyiowa.gov
---	--	--	--	--

You are hereby notified a meeting of the Woodbury County Board of Supervisors will be held September 12, 2017 at **4:30 p.m.** in the Basement of the Courthouse, 620 Douglas Street, Sioux City, Iowa for the purpose of taking official action on the agenda items shown hereinafter and for such other business that may properly come before the Board.

This is a formal meeting during which the Board may take official action on various items of business. If you wish to speak on an item, please follow the seven participation guidelines adopted by the Board.

1. Anyone may address the Board on any agenda item after initial discussion by the Board.
2. Speakers will approach the microphone one at a time and be recognized by the Chair.
3. Speakers will give their name, their address, and then their statement.
4. Everyone will have an opportunity to speak. Therefore, your remarks may be limited to three minutes on any one item.
5. At the beginning of the discussion on any item, the Chair may request statements in favor of an action be heard first followed by statements in opposition to the action.
6. Any concerns or questions you may have which do not relate directly to a scheduled item on the agenda will also be heard under the first or final agenda item "Citizen Concerns."
7. For the benefit of all in attendance, please silence cell phones and other devices while in the Board Chambers.

AGENDA

4:30 p.m. Call Meeting to Order – Pledge of Allegiance to the Flag – Moment of Silence

- | | |
|--|-------------|
| 1. Citizen Concerns | Information |
| 2. Approval of the agenda September 12, 2017 | Action |

Consent Agenda

Items 3 through 9 constitute a Consent Agenda of routine action items to be considered by one motion. Items pass unanimously unless a separate roll call vote is requested by a Board Member.

3. Approval of the minutes of the September 5, 2017 meeting
4. Approval of claims
5. Public Bidder – Heather Satterwhite
Approval of Notice of Property Sale Resolution for Parcel #894720386007 & #894720386008 (aka 1123 W. 14th St. & 1402 Myrtle St.) setting for Tuesday, September 26th at 4:35
6. Human Resources – Ed Gilliland
Approval of Memorandum of Personnel Transactions

7. Receive Commission of Veteran Affairs Quarterly Report
8. Board of Supervisors – Jeremy Taylor
Approval of Change of Committee Form: Woodbury County Courthouse Advisory Committee for Historical Preservation – Addition of members Leesa McNeil and Shane Albrecht
9. Secondary Roads – Mark Nahra
 - a. Consideration of a permit to cross the county right of way with an underground tile
 - b. Consideration of a permit for use of the county right of way for an underground utility

End Consent Agenda

- | | |
|---|------------------|
| 10. Economic Development – David Gleiser
Approval of the 15 th Tri-State Governors’ Conference hosted by the
Siouxland Chamber of Commerce | Action |
| 11. Secondary Roads – Mark Nahra <ol style="list-style-type: none"> a. Consider award of Project number LFM-(L1)—79-97 b. Reject quotes for Slurry Levelers 2017 | Action
Action |
| 12. Chairman’s Report <ol style="list-style-type: none"> a. Winnebago Land Acquisition Notice b. Hungry Canyons Alliance Fall Quarterly Meeting and Tour (Sept. 8) c. Merville Chamber of Commerce Meeting (Ung & Radig; Sept. 11) | Information |
| 13. Reports on Committee Meetings | Information |
| 14. Citizen Concerns | Information |
| 15. Board Concerns | Information |

ADJOURNMENT

Subject to Additions/Deletions

CALENDAR OF EVENTS

WEDNESDAY, SEPT. 13	8:05 a.m.	Woodbury County Information Communication Commission, First Floor Boardroom
	6:30 p.m.	911 Service Board Meeting, Public Safety Center, Climbing Hill
	8:00 p.m.	County's Mayor Association Meeting, Public Safety Center, Climbing Hill
THURSDAY, SEPT. 14	10:00 a.m.	Policy Review Committee, First Floor Boardroom
	5:30 p.m.	Siouxland Chamber of Commerce 32 nd Annual Dinner, Sioux City Convention Center, 801 4 th Street
FRIDAY, SEPT. 15	2:00 p.m.	Decat Board Meeting, Western Hills AEA, Room F
MONDAY, SEPT. 18	8:00 a.m.	Department Head Meeting, LEC Conference Room
TUESDAY, SEPT. 19	11:30 a.m.	Woodbury County Employee Appreciation Picnic, Courthouse
WEDNESDAY, SEPT. 20	10:00 a.m.	Siouxland Center for Active Generations Board of Directors Meeting, 313 Cook St.
	12:00 p.m.	Siouxland Economic Development Corporation Meeting, 617 Pierce St., Ste. 202
	6:30 p.m.	Woodbury County Solid Waste Agency (Sanitary Landfill) Executive Committee Meeting, Public Safety Center, Climbing Hill
THURSDAY, SEPT. 21	10:30 a.m.	Siouxland Regional Transit Systems (SRTS) Board Meeting, SIMPCO Office, 1122 Pierce St.
	4:30 p.m.	Community Action Agency of Siouxland Board Meeting, 2700 Leech Avenue
MONDAY, SEPT. 25	6:00 p.m.	Zoning Commission Meeting, First Floor Boardroom
TUESDAY, SEPT. 26	1:00 p.m.	Sioux Rivers Regional Governance Board Meeting, Plymouth County Courthouse Annex Building, 215 4th Ave. S.E., Le Mars, Iowa
MONDAY, OCT. 2	6:00 p.m.	Board of Adjustment meeting, First Floor Boardroom
TUESDAY, OCT. 3	4:45 p.m.	Veteran Affairs Meeting, Veteran Affairs Office, 1211 Tri-View Ave.
WEDNESDAY, OCT. 4	12:00 p.m.	District Board of Health Meeting, 1014 Nebraska St.
THURSDAY, OCT. 5	5:00 p.m.	Conservation Board Meeting, Brown's Lake – Bigelow Park

The following Boards/Commission have vacancies: Commission to Assess Damages - Category A, Category B, Category C and Category D

Woodbury County is an Equal Opportunity Employer. In compliance with the Americans with Disabilities Act, the County will consider reasonable accommodations for qualified individuals with disabilities and encourages prospective employees and incumbents to discuss potential accommodations with the Employer.

Federal and state laws prohibit employment and/or public accommodation discrimination on the basis of age, color, creed, disability, gender identity, national origin, pregnancy, race, religion, sex, sexual orientation or veteran's status. If you believe you have been discriminated against, please contact the Iowa Civil Rights Commission at 800-457-4416 or Iowa Department of Transportation's civil rights coordinator. If you need accommodations because of a disability to access the Iowa Department of Transportation's services, contact the agency's affirmative action officer at 800-262-0003.

SEPTEMBER 5, 2017, THIRTYFOURTH MEETING OF THE WOODBURY COUNTY BOARD OF SUPERVISORS

The Board of Supervisors met on Tuesday, September 5, 2017 at 1:00 p.m. Board members present were De Witt, Pottebaum, Radig, Ung, and Taylor. Staff members present were Dennis Butler, Budget/Tax Analyst, Heather Satterwhite, Executive Secretary/Public Bidder, Ed Gilliland, Human Resources Director, Abigail Sills, Assistant County Attorney and Patrick Gill, Auditor/Clerk to the Board.

- 1. Motion by Ung second by De Witt to go into closed session per Iowa Code Section 21.5(1)(i). Carried 5-0 on a roll-call vote.

Motion by Taylor second by Ung to go out of closed session per Iowa Code Section 21.5(1)(i). Carried 5-0 on a roll-call vote.

- 2. Motion by Ung second by De Witt to go into close session per Iowa Code Section 21.5(1)(i). Carried 5-0 on a roll-call vote.

Motion by Ung second by Taylor to go out of closed session per Iowa Code Section 21.5(1)(i). Carried 5-0 on a roll-call vote.

- 3. Motion by Ung second by De Witt to go into closed session per Iowa Code Section 21.5(1)(i). Carried 5-0 on a roll-call vote.

Motion by Ung second by De Witt to go out of closed session per Iowa Code Section 21.5(1)(i). Carried 5-0 on a roll-call vote.

The regular meeting was called to order with the Pledge of Allegiance to the Flag and a Moment of Silence.

- 4. There were no citizen concerns.
- 5. Motion by Ung second by Taylor to approve the Agenda for September 5, 2017. Carried 5-0. Copy filed.

Motion by De Witt second by Ung to approve the following items by consent:

- 6. To approve minutes of the August 29, 2017 meeting. Copy filed.
- 7. To approve the claims totaling \$660,346.22. Copy filed.
- 8a. To approve and authorize the Chairperson to sign a Resolution setting the public hearing date and sale date of parcel #894717351012 & #894717351011, 1667 W. Lunah Ave. & 1673 W. Lunah Ave., Sioux City.

**RESOLUTION #12,621
NOTICE OF PROPERTY SALE**

WHEREAS Woodbury County, Iowa was the owner under a tax deed of a certain parcel of real estate described as:

Lot 29 Pleasant View Addition, City of Sioux City, in the County of Woodbury and State of Iowa (1667 W. Lunah Ave.)

Lot 28 Pleasant View Addition, City of Sioux City, in the County of Woodbury and State of Iowa (1673 W. Lunah Ave.)

NOW THEREFORE,

BE IT RESOLVED by the Board of Supervisors of Woodbury County, Iowa as follows:

- 1. That a public hearing on the aforesaid proposal shall be held on

the **19th Day of September, 2017 at 4:35 o'clock p.m.** in the basement of the Woodbury County Courthouse.

2. That said Board proposes to sell the said parcel of real estate at a public auction to be held on the **19th Day of September, 2017**, immediately following the closing of the public hearing.
3. That said Board proposes to sell the said real estate to the highest bidder at or above a **total minimum bid of \$511.00** plus recording fees.

Dated this 5th Day of September, 2017.

WOODBURY COUNTY BOARD OF SUPERVISORS

Copy filed.

- 8b. To approve and authorize the Chairperson to sign a Resolution setting the public hearing date and sale date of parcel #894721406004, 1924 Ingleside Ave., Sioux City.

**RESOLUTION #12,622
NOTICE OF PROPERTY SALE**

WHEREAS Woodbury County, Iowa was the owner under a tax deed of a certain parcel of real estate described as:

**Lot 2, except the East 100 feet thereof, in Block 2, Boulevard Addition to Sioux City, in the County of Woodbury and State of Iowa
(1924 Ingleside Ave.)**

NOW THEREFORE,

BE IT RESOLVED by the Board of Supervisors of Woodbury County, Iowa as follows:

1. That a public hearing on the aforesaid proposal shall be held on the **19th Day of September, 2017 at 4:37 o'clock p.m.** in the basement of the Woodbury County Courthouse.
2. That said Board proposes to sell the said parcel of real estate at a public auction to be held on the **19th Day of September, 2017**, immediately following the closing of the public hearing.
3. That said Board proposes to sell the said real estate to the highest bidder at or above a **total minimum bid of \$511.00** plus recording fees.

Dated this 5th Day of September, 2017.

WOODBURY COUNTY BOARD OF SUPERVISORS

Copy filed.

- 9a. To approve the separation of Tyler Moffatt, Sheriff Reserve Officer, County Sheriff Dept., effective 8-21-17. Resignation.; the separation of Michelle Kyle, Civilian Jailer, County Sheriff Dept., effective 8-28-17. Resignation.; and the transfer of Zachary Johnson, Civilian Jailer, County Sheriff Dept., effective 9-06-17, \$18.72/hour. Position Transfer from Sheriff Reserve to Civilian Jailer. Copy filed.
- 9b. To approve and authorize the Chairperson to sign the Authorization to initiate the hiring process for Civilian Jailer, County Sheriff Dept., CWA: \$18.72/hour. Copy filed.
10. To approve the above ground utility permits for Mid American Energy. Copy filed.

Carried 5-0.

- 11. Presentation of Award Certificate to David Gleiser. Copy filed.
- 12. Motion by Ung second by Radig to approve the proclamation of Woodbury County Loess Hills and Heritage Week. Carried 5-0. Copy filed.
- 13a. A public hearing was held at 4:45 p.m. for authorization of loan agreement and the issuance of notes to evidence the obligation of the County thereunder.

Motion by Taylor second by Ung to close the hearing. Carried 5-0.
- 13b. Motion by Ung second by De Witt to approve and authorize the Chairperson to sign a Resolution instituting proceedings to take additional action for the issuance of not to exceed \$850,000 General Obligation Capital Loan Notes. Carried 5-0.

RESOLUTION #12,623
RESOLUTION INSTITUTING PROCEEDINGS TO TAKE
ADDITIONAL ACTION FOR THE ISSUANCE OF NOT TO
EXCEED \$850,000 GENERAL OBLIGATION CAPITAL LOAN
NOTES

WHEREAS, pursuant to notice published as required by law, the Board of Supervisors has held a public meeting and hearing upon the proposal to institute proceedings for the authorization of a Loan Agreement and the issuance of not to exceed \$850,000 General Obligation Capital Loan Notes, for the essential county purposes, in order to provide funds to pay the costs of peace officer communication equipment and other emergency services communication equipment and systems, and has considered the extent of objections received from residents or property owners as to the proposed issuance of Notes; and following action is now considered to be in the best interests of the County and residents thereof.

NOW, THEREFORE, BE IT RESOLVED BY THE BOARD OF SUPERVISORS OF WOODBURY COUNTY, STATE OF IOWA:

Section 1. That this Board does hereby institute proceedings and take additional action for the authorization and issuance in the manner required by law of not to exceed \$850,000 General Obligation Capital Loan Notes, for the foregoing essential county purposes.

Section 2. This Resolution shall serve as a declaration of official intent under Treasury Regulation 1,150-2 and shall be maintained on file as a public record of such intent. It is reasonably expected that the general fund moneys may be advanced from time to time for capital expenditures which are to be paid from the proceeds of the above Notes. The amounts so advanced shall be reimbursed from the proceeds of the Notes not later than eighteen months after the initial payment of the capital expenditures or eighteen months after the property is placed in service. Such advancements shall not exceed the amount authorized in this Resolution unless the same are for preliminary expenditures or unless another declaration of intention is adopted.

PASSED AND APPROVED this 5th day of September, 2017.
WOODBURY COUNTY BOARD OF SUPERVISORS
Copy filed.

- 14a. Motion by Ung second by Pottebaum to approve Cooks Correctional Kitchen Equipment order through CBM Managed Food Service for \$125,000.00. Carried 5-0. Copy filed.
- 14b. Motion by Taylor second by Radig to approve the proposal from Goodwin Tucker, CW Suter, Thompson Electric, and Midwest Mech. for modification and installation of Kitchen Equipment and food storage areas. Carried 5-0. Copy filed.
- 14c. Information on Trospen Hoyt Juvenile Detention Master Control and Door Project – Bids received. Copy filed.

14d. A public hearing was held at 4:55 p.m. for Trospen Hoyt Juvenile Detention Master Control and Door Project.

Motion by Ung second by Taylor to close the public hearing. Carried 5-0.

15. Motion by Radig second by Ung to approve budgeting up to \$7,283 on local option sales tax to pay for half of the membership dues for rural cities that want a SIMPCO membership in FY 17/18. Carried 5-0. Copy filed.

16a. There was no bid letting for Project #M-(220th St)—73-97.

16b. Bid letting was held for Project #LFM9L1)—73-97. The bids are as follows:

Dixon Const., Correctionville, IA	\$145,852.80
Peterson Contractors, Reinbeck, IA	\$157,470.25
L.A. Carlson, Merrill, IA	\$158,693.68
Nelson & Rock, Onawa, IA	\$159,711.69
Midwest Contracting, Marshall, IA	\$175,375.00

Motion by Ung second by Radig to receive the bids and submit them to Secondary Roads for review and recommendation. Carried 5-0. Copy filed.

16c. Bid letting was held for project HMA Levelers 2017. The bids are as follows:

Knife River, Sioux City, IA	\$75,345.80
Henningson Construction, Atlantic, IA	\$101,585.20

Motion by Radig second by Ung to receive the bids and to award the project to Knife River, Sioux City, IA, for \$75,345.80. Carried 5-0. Copy filed.

16d. Bid letting was held for project Slurry Levelers 2017. The bids are as follows:

Ford Dodge Asphalt, Fort Dodge, IA	\$116,596.25
------------------------------------	--------------

Motion by Ung second by Pottebaum to receive the bid and submit it to Secondary Roads. Carried 5-0. Copy filed.

16e. Motion by Ung second by Radig to approve the federal aid project amendment for project #STP-S-CO97(134)—5E-97. Carried 5-0. Copy filed.

16f. Motion by Taylor second by Ung to approve the plans for project #M-HC 17-4. Carried 5-0. Copy filed.

16g. Bid letting was held for a tractor. The bids are as follows:

Icon Ag and Turf, Lawton, IA	\$90,957.50
D & K Implement, Correctionville, IA	\$64,960.00
S & S Equipment, Lawton, IA	\$82,500.00

Motion by Ung second by De Witt to receive the bids and submit them to Secondary Roads for review and recommendation. Carried 5-0. Copy filed.

16h. Motion by Ung second by Pottebaum to approve the contract for Maintenance Gravel, G-2018 with Hallett Materials, Wall Lake, IA, for \$982,625. Carried 5-0. Copy filed.

17. Motion by Ung second by De Witt to direct the Human Resources Dept. to produce a standardized performance evaluation of department heads form for board approval at the Oct. 31st meeting of earlier, for board members to evaluate the performance of department heads over the 2017 calendar year in the months of November/December. Carried 5-0. Copy filed.

18. The Chairperson reported on the day-to-day activities.
19. Reports on committee meetings were presented.
20. There were no citizen concerns.
21. Board member concerns were presented.

The Board adjourned the regular meeting until September 12, 2017.

Meeting sign in sheet. Copy filed.

RESOLUTION #**NOTICE OF PROPERTY SALE****Parcels #894720386007 & #894720386008**

WHEREAS Woodbury County, Iowa was the owner under a tax deed of a certain parcel of real estate described as:

The South Twenty-two feet of the West Thirty-two feet of Lot 7 in Block 38, North Sioux City Addition, in the County of Woodbury and State of Iowa (1123 W. 14th Street)

The West Forty-four feet of Lot 7, except the South Twenty-two feet of the West Thirty-two feet thereof, in Block 38, North Sioux City Addition, in the County of Woodbury and State of Iowa (1402 Myrtle Street)

NOW THEREFORE,

BE IT RESOLVED by the Board of Supervisors of Woodbury County, Iowa as follows:

1. That a public hearing on the aforesaid proposal shall be held on the **26th Day of September, 2017 at 4:35 o'clock p.m.** in the basement of the Woodbury County Courthouse.
2. That said Board proposes to sell the said parcel of real estate at a public auction to be held on the **26th Day of September, 2017**, immediately following the closing of the public hearing.
3. That said Board proposes to sell the said real estate to the highest bidder at or above a **total minimum bid of \$50.00** plus recording fees.
4. That this resolution, preceded by the caption "Notice of Property Sale" and except for this subparagraph 4 be published as notice of the aforesaid proposal, hearing and sale.

Dated this 12th Day of September, 2017.

ATTEST:

WOODBURY COUNTY BOARD OF SUPERVISORS

Patrick F. Gill
Woodbury County Auditor
and Recorder

Matthew A. Ung, Chairman

REQUEST FOR MINIMUM BID

Name: Ricardo Osorio Date: 11-14-16

Address: 1117 W. 14th St. Phone: 212-529

Address or approximate address/location of property interested in:

1123 W. 14th St. + 1402 Myrtle St.

GIS PIN # 894720386007 + 894720386008

**This portion to be completed by Board Administration **

Legal Description:

S 22ft W. 32ft. Lot 7 Block 38 North Sioux City Addition
Ex S 22ft. W 32ft. W 32ft. W 44ft. Lot 7 Block 38 North
Sioux City Addition

Tax Sale #/Date: 76/1992 77/1992 Parcel # 058860 058875

Tax Deeded to Woodbury County on: 4-14-94 6-15-94

Current Assessed Value: Land 500 1,300 Building — Total —

Approximate Delinquent Real Estate Taxes: —

Approximate Delinquent Special Assessment Taxes: —

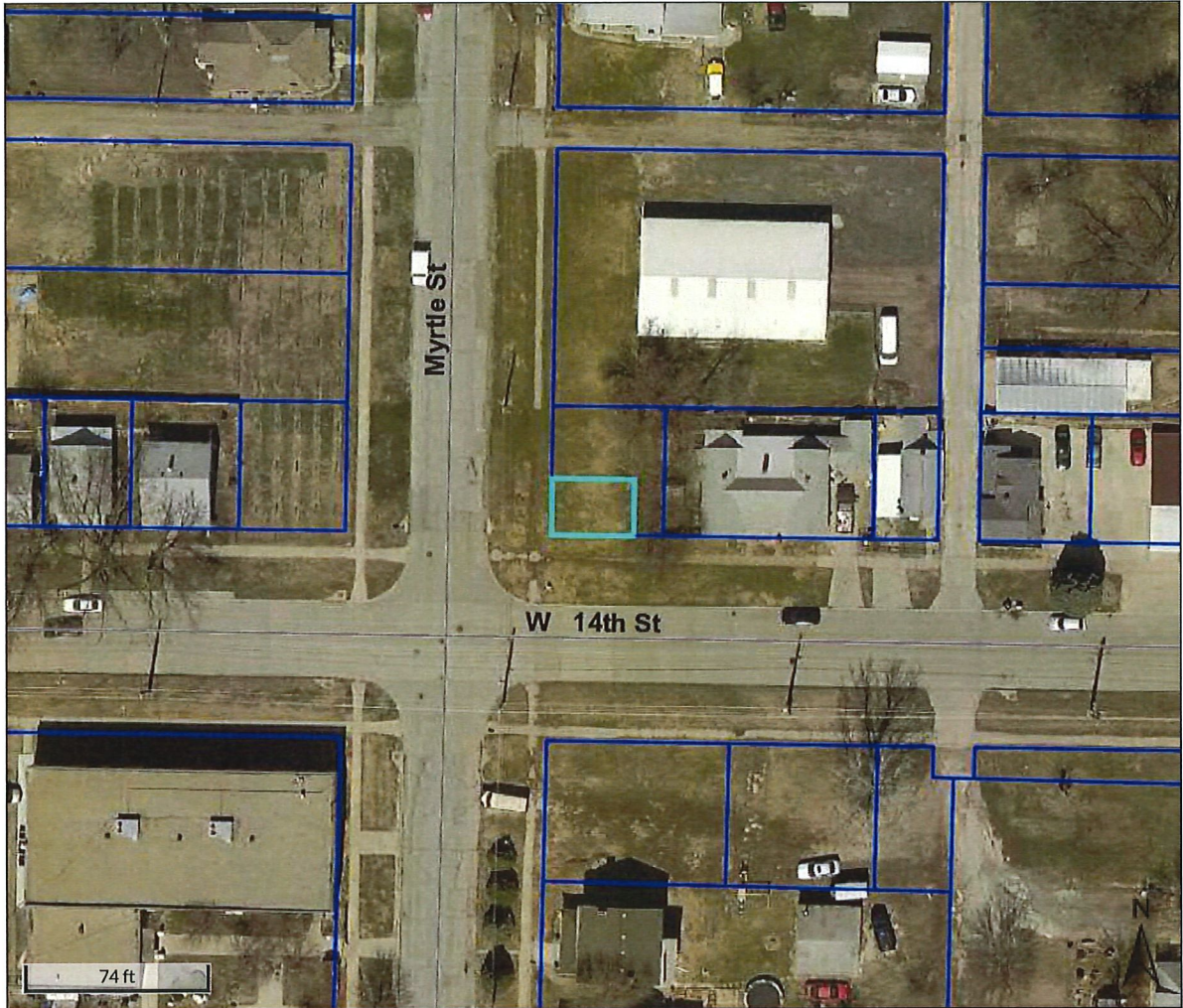
*Cost of Services: Ø

Inspection to: Jeremy Taylor Date: 11-14-16

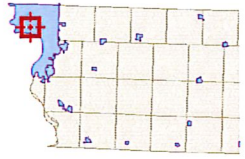
Minimum Bid Set by Supervisor: \$50 Total

Date and Time Set for Auction: Tuesday, September 26th @ 4:35

* Includes: Abstractors costs; Sheriff's costs; publishing costs; and mailing costs.



Overview

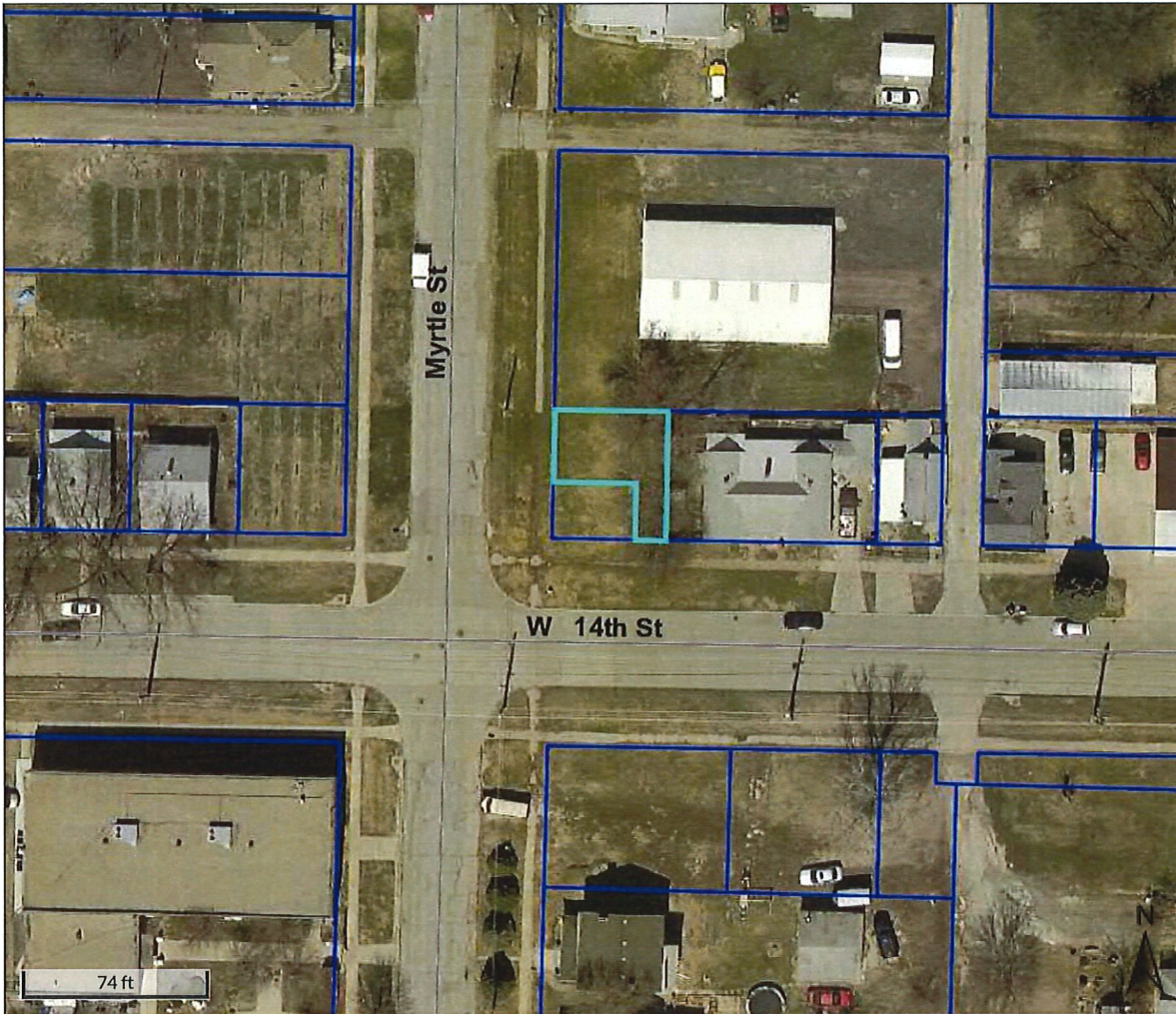


Legend

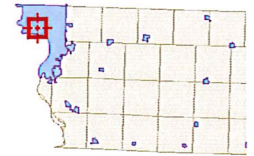
- Roads
- ▭ Corp Boundaries
- ▭ Townships
- County Residential Sales
 - 2014
 - 2015
 - 2016
 - Sioux City Residential Sales
- ▭ Parcels

Parcel ID	894720386007	Alternate ID	058860	Owner Address	WOODBURY COUNTY
Sec/Twp/Rng	0-0-0	Class	C		620 DOUGLAS ST
Property Address	1123 W 14TH ST	Acreage	n/a		RM 104
	SIOUX CITY				SIOUX CITY, IA 51101-1248
District	087 SC LL SIOUX CITY COMM				
Brief Tax Description	NORTH SIOUX CITY				
	S 22 FT W 32 FT LOT				
	7 BLK 38				
	(Note: Not to be used on legal documents)				








Date created: 11/22/2016
 Last Data Uploaded: 11/21/2016 11:22:20 PM



Overview

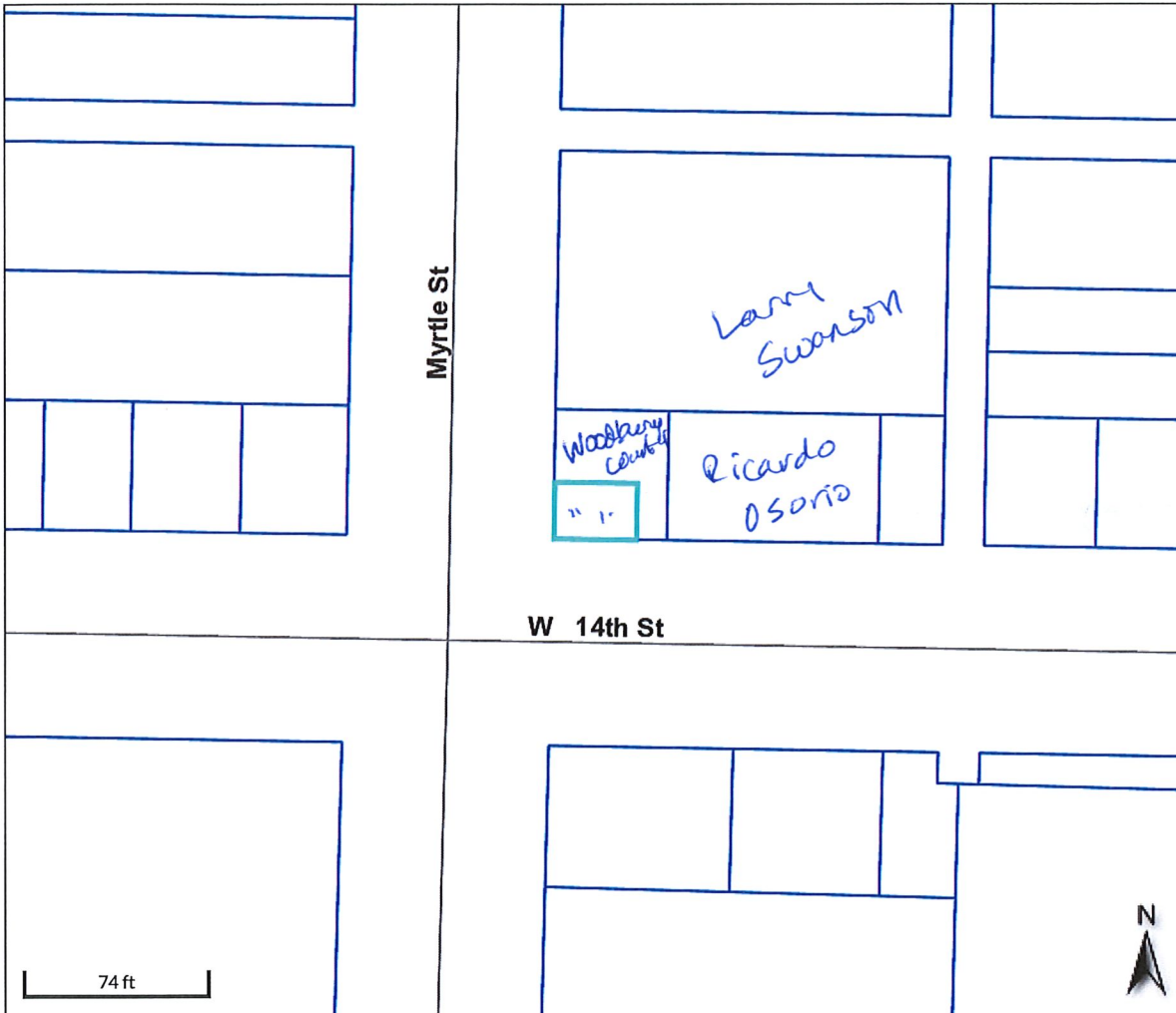


Legend

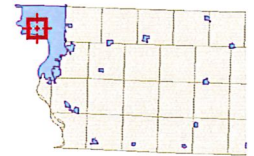
- Roads
-  Corp Boundaries
-  Townships
- County Residential Sales
-  2014
-  2015
-  2016
-  Sioux City Residential Sales
-  Parcels

Parcel ID	894720386008	Alternate ID	058875	Owner Address	WOODBURY COUNTY
Sec/Twp/Rng	0-0-0	Class	R		620 DOUGLAS ST
Property Address	1402 MYRTLE ST	Acreage	n/a		RM 104
	SIOUX CITY				SIOUX CITY, IA 51101-1248
District	087 SC LL SIOUX CITY COMM				
Brief Tax Description	NORTH SIOUX CITY				
	EX S 22 FTW 32 FTW				
	44 FT LOT 7 BLK 38				
	(Note: Not to be used on legal documents)				








Date created: 11/22/2016
 Last Data Uploaded: 11/21/2016 11:22:20 PM



Overview



Legend

- Roads
-  Corp Boundaries
-  Townships
- County Residential Sales
-  2014
-  2015
-  2016
-  Sioux City Residential Sales
-  Parcels

Parcel ID	894720386007	Alternate ID	058860	Owner Address	WOODBURY COUNTY
Sec/Twp/Rng	0-0-0	Class	C		620 DOUGLAS ST
Property Address	1123 W 14TH ST	Acreage	n/a		RM 104
	SIOUX CITY				SIOUX CITY, IA 51101-1248
District	087 SC LL SIOUX CITY COMM				
Brief Tax Description	NORTH SIOUX CITY				
	S 22 FT W 32 FT LOT				
	7 BLK 38				
	(Note: Not to be used on legal documents)				

Date created: 11/22/2016
 Last Data Uploaded: 11/21/2016 11:22:20 PM

HUMAN RESOURCES DEPARTMENT

MEMORANDUM OF PERSONNEL TRANSACTIONS

DATE: September 12, 2017

* PERSONNEL ACTION CODE:

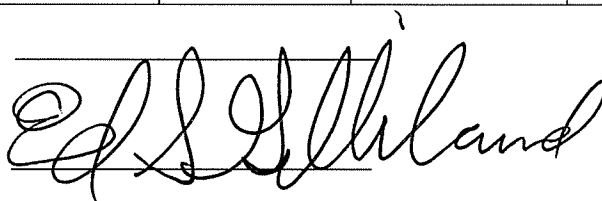
- A- Appointment
- T - Transfer
- P - Promotion
- D - Demotion
- R-Reclassification
- E- End of Probation
- S - Separation
- O - Other

TO: **WOODBURY COUNTY BOARD OF SUPERVISORS**

NAME	DEPARTMENT	EFFECTIVE DATE	JOB TITLE	SALARY REQUESTED	% INCREASE	*	REMARKS
Velasquez, Anthony	Juvenile Detention	9-28-17	P/T Youth Worker	\$19.80/hour	3%=\$.65/hour	R	Per AFSCME Juvenile Detention Contract agreement, from Grade 1/Step 2 to Grade 1/Step 3.

APPROVED BY BOARD DATE:

ED GILLILAND, HR DIRECTOR:



Ed Gilliland

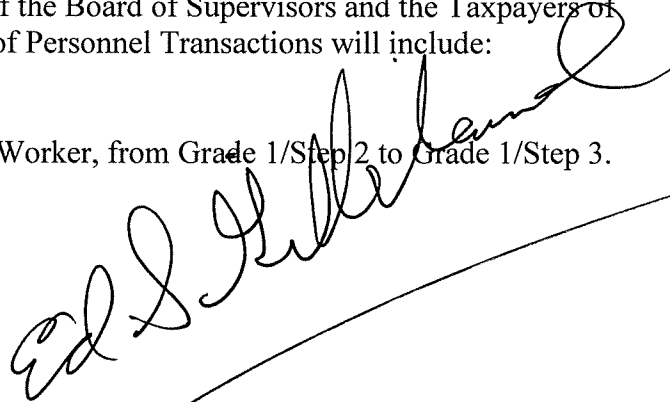
WOODBURY COUNTY
HUMAN RESOURCES DEPARTMENT

TO: Board of Supervisors and the Taxpayers of Woodbury County
FROM: Ed Gilliland, Human Resources Director
SUBJECT: Memorandum of Personnel Transactions
DATE: September 12, 2017

For the September 12, 2017 meeting of the Board of Supervisors and the Taxpayers of Woodbury County the Memorandum of Personnel Transactions will include:

- 1) Juvenile Detention P/T Youth Worker, from Grade 1/Step 2 to Grade 1/Step 3.

Thank you



Ed Gilliland

QUARTERLY REPORT
COMMISSION OF VETERAN AFFAIRS

STATE OF IOWA
WOODBURY COUNTY

We, the undersigned, members of the Commission of Veteran Affairs, hereby certify that the following is a correct statement of the initials and amounts of assistance given to persons entitled to relief under Chapter 35 of the Code of Iowa, and for the quarter ending June 30, 2017 – 4th Quarter (April, May and June 2017).

Len K Kostel

Kathy Mervin

JJ

Members of Veteran Affairs Commission

VETERAN	ASSISTANCE AMT
1061	\$650.00
1074	\$350.19
1097	\$629.53
1098	\$275.70
1102	\$9.88
1103	\$790.76
1104	\$919.28
1105	\$580.00
1106	\$1000.00
1107	\$1000.00
1108	\$2000.00
1109	\$2000.00
1110	\$2000.00
1111	\$387.00
1112	\$46.82
1113	\$148.69

TOTAL ASSISTANCE FY 15 - 16 4th QUARTER: \$ 12,787.85

CREATION/CHANGE OF COMMITTEE FORM
Form Approved by the Board of Supervisors 11/17/15

Board Approval Date: 9/12/2017

Date Originally Created: 3/8/16

Ending Date (if known):

Name of Committee:

Woodbury County Courthouse Advisory Committee for Historical Preservation

Purpose:

Interpreting and balancing between the beauty of the past with the function of the present

	Members OR Position	Entity Represented
1.	Matthew Ung, Supervisor	Woodbury County Board of Supervisors
2.	Jeremy Taylor, Supervisor	Woodbury County Board of Supervisors
3.	Ed Gilliland, Director	Woodbury County Human Resources Dept.
4.	Terry Glade	CMBA Architects
5.	Jim Jung	Sioux City Historic Preservation
6.	Kenny Schmitz, Director	Woodbury County Building Services Dept.
7.	Ed Storm	FEH Architects - Historian
8.	Mike Walsh	Public citizen
9.	Pat Gill, Auditor	Woodbury County Auditor's Office
10.	Leesa McNeil	3rd Judicial District Court Administrator
11.	Shane Albrecht	Baker Group - Project Manager
12.		

Is this Committee - X the box that applies

- Required by Iowa Code
- Created by the provision of Iowa Code Chapter 28E
- Committee Created by Agreement
- Committee Created for Special Purpose*

The Committee plans to at least meet - X the box that applies

- Weekly
- Monthly
- Quarterly
- Annually
- Other/Unknown

* Special committees will sunset at the end of every calendar year unless re-approved each year.

WOODBURY COUNTY BOARD OF SUPERVISORS AGENDA ITEM(S) REQUEST FORM

Date: 9/7/2017 Weekly Agenda Date: 9/12/2017

ELECTED OFFICIAL / DEPARTMENT HEAD / CITIZEN: Mark J. Nahra, County Engineer

WORDING FOR AGENDA ITEM:

Consideration of a permit to cross the county right of way with an underground tile

ACTION REQUIRED:

- Approve Ordinance
- Approve Resolution
- Approve Motion
- Public Hearing
- Other: Informational
- Attachments

EXECUTIVE SUMMARY:

Schmillen Construction has requested the approval of a permit to install an underground tile crossing in the right of way of 110th St. at the Jeff Barthole farm.

BACKGROUND:

Work in county ROW requires permit by Board of Supervisors per section 318.8 of the Code of Iowa. Tile crossings in the ROW are paid for by the county with the farm owners on both sides of the road paying for the connection.

FINANCIAL IMPACT:

The county will be required to pay for the crossing pipe within the right of way. The cost of connecting to the road tile crossing is paid by the farm owners.

IF THERE IS A CONTRACT INVOLVED IN THE AGENDA ITEM, HAS THE CONTRACT BEEN SUBMITTED AT LEAST ONE WEEK PRIOR AND ANSWERED WITH A REVIEW BY THE COUNTY ATTORNEY'S OFFICE?

Yes No

RECOMMENDATION:

Recommend approval of the permit for Schmillen Construction.

ACTION REQUIRED / PROPOSED MOTION:

Motion to approve the tile crossing permits for Schmillen Construction and to direct the chair to sign the permits.

WOODBURY COUNTY IOWA

Application for use of Highway Right-of-Way for Underground Tile Line Facility

Permit No. _____

Woodbury County Board of Supervisors
Court House
Sioux City, Iowa

Re: Permit request for use of County Highway right-of-way for underground tile line facility

Applicant: Jeff Barthole
(Name of Individual or Company)

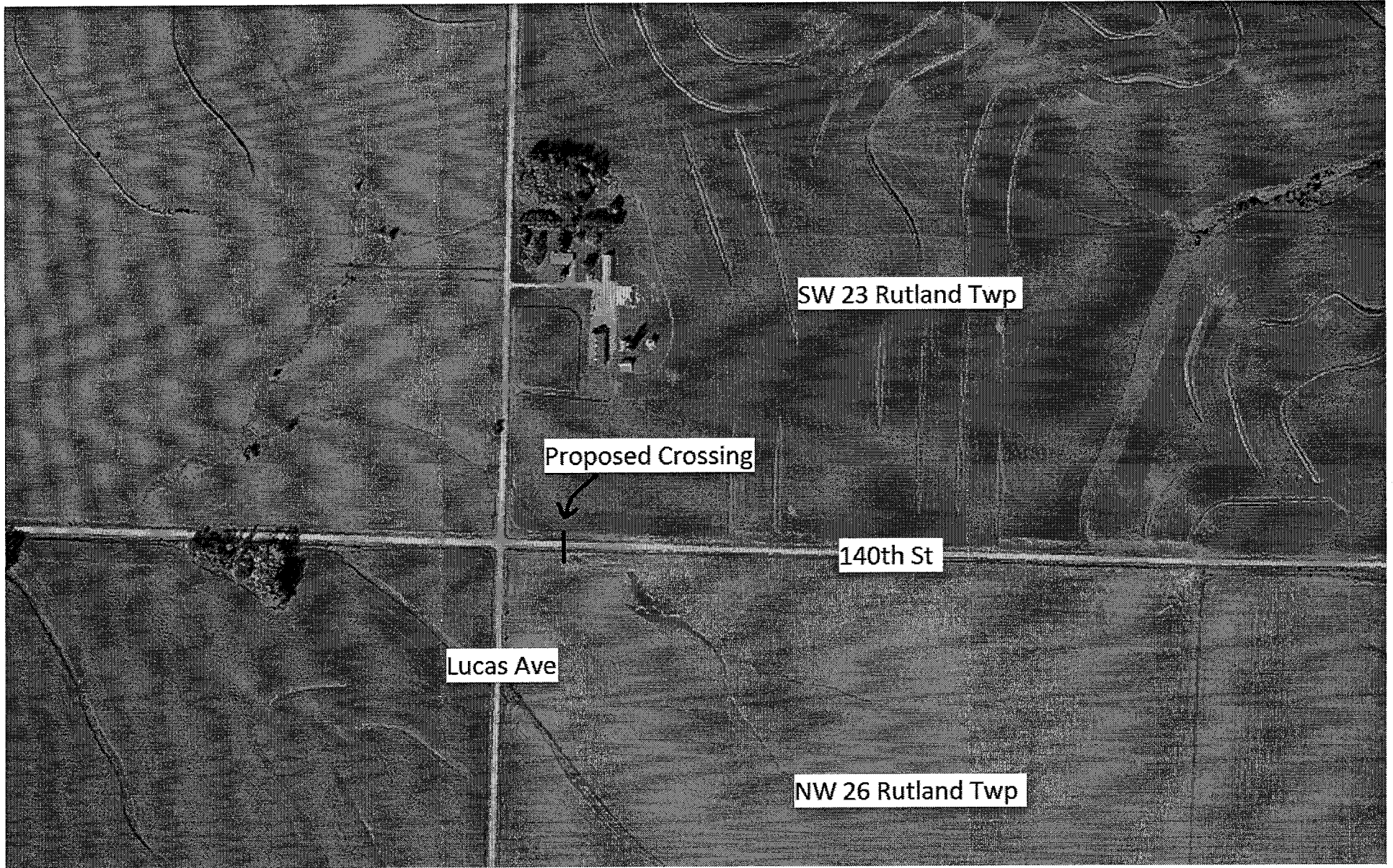
Address: _____

Applicant hereby requests use of county highway right-of-way to install, operate, and maintain a buried tile line facility. The facility consists of a 6" tile road crossing between SW 23 Rutland + NW 26 Rutland, across 140th St.

The above named applicant is hereby granted permission and authority to lay, construct, operate, and maintain the above described facility in County road right-of-way at said location and as set forth in Exhibit "A" attached hereto and made a part of this permit as fully as if set out in length herein.

AGREEMENT: The applicant agrees that the following stipulations shall govern under this permit.

1. The applicant will at any time subsequent to placing said facility agree to relay, replace, reconstruct, or relocate said facility and appurtenances thereto as may become necessary to conform to new grades, alignment or widening of right-of-way resulting from maintenance or construction operations by the Board of Supervisors irrespective of whether or not additional right-of-way is acquired in connection with such highway improvement. The applicant agrees to do this promptly on order by the Board of Supervisors. If the applicant is unable to comply promptly, the Board of Supervisors may cause the work to be done.
2. The Board of Supervisors will endeavor to give the applicant sufficient notice of any proposed construction or maintenance work on either existing or newly acquired right-of-way that is likely to expose, cover-up, or disturb any part of the facility belonging to the applicant in order that the applicant may arrange to protect the facility. The Board of Supervisors will inform contractors and others working on the right-of-way of the location of the facility so that reasonable care may be taken to avoid damaging the facility. The County and the Board of Supervisors assume no responsibility, however, for failure to give such notice.
3. The County and the Board of Supervisors assume no responsibility for damages to the applicant's property occasioned by any construction or maintenance operations on said highways, including new or additional right-of-way acquired in connection therewith, subsequent to the building of the applicant's facility.
4. The applicant shall take all reasonable precaution during the construction of said facility to protect and safeguard the lives and property of the traveling public and adjacent property owners and shall indemnify and hold the County and the Board of Supervisors harmless of any damage or losses that may be sustained by the traveling public or adjacent property owners on account of such construction operations.



SW 23 Rutland Twp

Proposed Crossing

140th St

Lucas Ave

NW 26 Rutland Twp

Application for use of highway right-of-way for underground tile line facility continued

5. Operations in the construction and maintenance of said facility shall be carried on in such a way as not to interfere with, or interrupt traffic on said highway.

6. The applicant shall hold the County and the Board of Supervisors harmless from any damage that may result to said highway because of the construction, maintenance, or operation of said facility and shall reimburse the County of the Board of Supervisors for any expenditures that the County or the Board of Supervisors may have to make on said highway on account of the applicant's facility having been constructed thereon, including bridge and culvert repairs.

7. If approved by the County Engineer, an open trench may be dug and the facility placed therein, and the trench backfilled over the facility. All backfill of tunnels and trenches shall be thoroughly compacted in layers of 6" or less in depth. Backfilling of trenches within the right-of-way but not under the traveled roadway shall be tamped sufficiently to avoid settlement. The Applicant agrees to give the County forty-eight hours notice of its intention to start work on the highway right-of-way. Said notice shall be made in writing to the County Engineer.

All work shall be done in a workmanlike manner; the surrounding ground, slopes, and ditch bottoms shall be reshaped to conform to the area and left in a neat condition satisfactory to the County Engineer and all areas where sod has been destroyed or damaged shall be reseeded.

Applicant agrees to assume responsibility for all damages that may arise, and to this end, indemnify and hold the County and all authorized representatives thereof harmless from any and all claims, damages, loss and expense including judgments, costs and including attorneys' fees for personal injuries (including death) or property damages arising or resulting from the activities of the Applicant in connection herewith, now and at all times in the future.

Engagement in the operations as herein applied for by the applicant shall be considered and constituted an acceptance of all the terms and conditions herein set forth.

APPROVAL OF
WOODBURY COUNTY BOARD OF SUPERVISORS

APPLICANT

BY: _____
(Chairman)

Schmillen Const. Inc
(Name of Individual or Company)

DATE: _____

BY: Steve Rupp
(Signature) (Title)
P.O. Box 488 Marcus IA
(Address)

DATE: July 15, 2017

Note: Applicant is to complete the original and two copies and mail to the County Engineer for his distribution as follows:

- 1 – Applicant
- 1 – County Engineer
- 1 – County Auditor

WOODBURY COUNTY BOARD OF SUPERVISORS AGENDA ITEM(S) REQUEST FORM

Date: 9/7/2017 Weekly Agenda Date: 9/12/2017

ELECTED OFFICIAL / DEPARTMENT HEAD / CITIZEN: Mark J. Nahra, County Engineer

WORDING FOR AGENDA ITEM:

Consideration of a permit for use of the county right of way for an underground utility

ACTION REQUIRED:

- Approve Ordinance
- Approve Resolution
- Approve Motion
- Public Hearing
- Other: Informational
- Attachments

EXECUTIVE SUMMARY:

Frontier Communciations has requested the approval of a permit to install electrical lines in the right of way of Jewell Ave., Knox Ave., and 110th St. north of Merville.

BACKGROUND:

Work in county ROW requires permit by Board of Supervisors per section 318.8 of the Code of Iowa. New facilities will be constructed in county right of way. This project will connect new above ground equipment to their network.

FINANCIAL IMPACT:

No financial impact to the county.

IF THERE IS A CONTRACT INVOLVED IN THE AGENDA ITEM, HAS THE CONTRACT BEEN SUBMITTED AT LEAST ONE WEEK PRIOR AND ANSWERED WITH A REVIEW BY THE COUNTY ATTORNEY'S OFFICE?

Yes No

RECOMMENDATION:

Recommend approval of the permits for Frontier Communications.

ACTION REQUIRED / PROPOSED MOTION:

Motion to approve the above ground utility permits for Frontier Communications and to direct the chair to sign the permits.



August 28th, 2017

Mark Nahra, P.E.
Woodbury County Engineer
759 E. Frontage Rd.
Moville, IA 51039

**RE: Frontier Communications
2017 Construction (Kingsley)
2408483, 2408484**

Dear Mr. Nahra:

Enclosed is a permit application for the placement of telecommunications facilities along and across multiple roads in Woodbury County. The telephone company intends to place this cable during the 2017 construction season. The cable will be placed by means of vibratory plow and directional bore.

At both locations in the packet, new above-ground equipment sites will be placed at the back of the ROW and short lengths of copper and fiber optic cable will be used to tie into the existing networks. A typical profile is attached showing these types of sites. If you have any questions or concerns, feel free to contact me at (920) 872-2902, or tjschultz@mscon.com. Your attention in this matter is greatly appreciated.

Once the permit is approved, please return it to our office, as we are responsible for putting the permits into one neat packet for construction. The address is: Mid-State Consultants, 680 E. Fond du Lac St., Ripon, WI 54971. You may also email it back to me.

Sincerely,

A handwritten signature in black ink, appearing to read "TJ Schultz", is written over a light blue horizontal line.

TJ Schultz
Mid-State Consultants

Enclosure: Permit Application

**PROVIDING COMMUNICATION
SYSTEMS ENGINEERING**

CORPORATE OFFICE
1475 NORTH 200 WEST
POST OFFICE BOX 311
NEPHI, UT 84648
TEL: (435) 623-8601
FAX: (435) 623-8610

REGIONAL OFFICE
1222 N. SUPERIOR
PO BOX 686
TOMAH, WI 54680
TEL: (608) 372-4127
FAX: (608) 372-4934

PERMIT FOR USE OF COUNTY ROAD/HIGHWAY RIGHT-OF-WAY FOR OVERHEAD AND/OR BURIED UTILITIES ACCOMMODATION

REQUEST BY APPLICANT:

Name Frontier Communications Highway 110th, Jewell Ave., Knox Ave.
Address 1470 Industrial Rd., LaMars, IA 51031 Township Arlington, Rutland
City of West of Pierson
Office Phone 515-573-1268 Local Phone Section: 1/4 of 1/4 Sec See attached plans
Type of Utility Installation Fiber and copper cables/facilities T 89 N, R W 43,44
Plans Prepared By Mid-State Consultants Copy Enclosed X Yes No
Map Showing Location Enclosed X Yes No
Utility Location is X cross right-of-way X parallel to right-of-way
overhead X underground
Proposed Method of Installation
tunnel suspend on poles cased
jack & bore suspend on towers X trench
open cut X plow X Directional Bore

Estimated Starting Date 9/5/17 Estimated Restoration Date 12/30/17

The Applicant understands and agrees that the permitted work shall comply with all permit provisions and conditions listed on the reverse side hereof, and special provisions listed below or attached hereto, and any and all plans, details, or notes attached hereto and made a part thereof. Applicant is to complete in triplicate and send all copies including plans and maps to Woodbury County Engineer, 759 E. Frontage Road, Moxley, IA 51039. One executed copy will be returned to the Applicant.

By [Signature] Title Permit Agent, Mid-State Consultants
(Signature of Authorized Utility Representative) Date 8/28/17

PERMIT APPROVAL BY PERMITTING AUTHORITY

The forgoing application is hereby approved and permit issued by the Permitting Authority subject to full compliance by the Applicant with all provisions and conditions stated herein and on the reverse side hereof and all attachments hereto.

By _____ Title _____
(Signature of Woodbury County Board Chairman)

Date _____

By _____
(Signature of Woodbury County Engineer)

Title _____

Date _____

Other Special Provisions:

Permit Provisions and Conditions of Issuance

- 1. The County and/or the County Board of Supervisors will not be charged with any responsibility for damages to the Applicant's property occasioned by any construction or maintenance operations on said county roads, including new or additional right-of-way acquired in connection therewith, subsequent to the building of the Applicant's facilities. The Board will endeavor to give the Applicant sufficient notice of any proposed construction or maintenance work, on either existing or newly acquired right-of-way that is likely to expose, cover up, or disturb any facilities belonging to the Applicant, in order that the Applicant may arrange to protect the facilities. The Board will inform contractors, and others working on the job of the location of the facilities so that reasonable care may be taken to avoid damaging the facilities, however the County and the Board of Supervisors will assume no responsibility for failure to give such notice.

2. The Applicant shall take all reasonable precaution during the construction of said facilities to protect and safeguard the lives and property of the adjacent property owners and the traveling public and shall save the County and the Board of Supervisors harmless of any damages or losses that may be sustained by adjacent property owners and the traveling public on account of such construction operations.
3. Operations in the construction and maintenance of said facilities shall be carried on in such a way as to not interfere with, or interrupt traffic on said roads. However, should the performance of work called for in this permit in any way interfere with or obstruct traffic on said roads, the Applicant shall provide the necessary flagmen as required by the Statutes when one-way traffic is involved and/or otherwise mark said work so as to protect the traveling public.
4. The Applicant shall hold the County and the Board of Supervisors harmless from any damages that may result to said highway because of the construction or maintenance of said facilities and shall reimburse the County or the Board of Supervisors for any expenditures that the County or the Board of Supervisors may have to make on said roads on account of replacement of surfacing gravel and bridge and culvert repairs.
5. Applicant shall lay, construct, operate and maintain said facilities so as not to interfere with natural drainage of the road and so as not to interfere with the construction or maintenance of said roads. When buried cable or wire lines are to be placed lengthwise with the roadway, they shall be placed in the County road shoulder or ditch near the toe of the fore-slope and parallel to centerline of roadbed at a depth of three (3) to four (4) feet by using specially designed plows or by trenching, whichever is appropriate. Plow slots and trenches shall be repacked as necessary to restore the disturbed area to its original condition. For buried line crossings of roadways not paved, an open trench may be dug and the lines placed therein, and the trench back-filled over the lines. Buried line crossings on paved roadways, lines may be placed through the sub-grade by jacking, or by boring a hole just large enough to take the lines; or if the County Engineer approves, a tunnel may be dug through and the cable or wire lines placed therein. All backfill of tunnels and trenches shall be thoroughly compacted in layers of 6" or less in depth. Back-filling of trenches within the right-of-way by not under the traveled roadway shall be tamped sufficiently to avoid settlement. When crossing an existing roadway, all buried facilities shall be placed a minimum of three (3) to four (4) below the bottom of the existing adjacent ditches. Overhead lines, where practical, shall be placed adjacent to and with two (2) feet of the Road/Highway Right-of-Way Line.
6. The Applicant will at any time subsequent to placing the facilities, and at the Applicant's expense, relay, replace, alter, change, reconstruct, or relocate its overhead and/or buried facilities and appurtenances thereto as may become necessary to conform to new grades, alignment, or widening right-of-way, resulting from maintenance or construction operations by the County Board of Supervisors irrespective of whether or not additional right-of-way is acquired in connection with such road improvements. The Applicant agrees to do this within ninety (90) days written notice from the Board of Supervisors, and without cost to the County. If the Applicant is unable to comply within said ninety (90) days, the Board of Supervisors may cause the work to be done and the Applicant will pay the cost thereof upon receipt of statement.
7. All work shall be done in a workmanlike manner; the surrounding ground, slopes, and ditch bottoms shall be reshaped to conform to the area and left in a neat condition satisfactory to the County Engineer. All areas where sod has been damaged or destroyed shall be re-seeded.
8. The Applicant shall notify the County Board of Supervisors at least forty-eight (48) hours in advance of the Applicant's intention of starting work covered by this permit on the road right-of-way. Said notice shall be in writing to the County Engineer.
9. Applicant, its' successors, grantees and assigns shall and hereby agrees to assume all responsibility, risks and liabilities for all accidents and damages that may occur to persons and/or property on account of the work done under this permit, and to this end, indemnify and hold the County and all authorized representatives thereof harmless from any and all claims, damages, losses, and expense including judgements, costs and including attorney's fees, for personal injuries (including death) or property damage arising or resulting from the activities of the Applicant in connection herewith, now and at all times in the future.
10. It is understood that this permit is issued only insofar as Woodbury County has jurisdiction and does not presume to release the Applicant from fulfilling any existing statutes relating to the installation, construction and operation of said facilities.
11. It is further understood that the facilities covered by this permit shall be constructed or installed within one (1) year after the date of approval of this permit, unless otherwise extended in writing by Woodbury County.
12. Engagement in the operations as herein applied for by the Applicant shall be considered and constitute an acceptance of all the terms and conditions herein set forth.

Project Locations

R-44W
ENTERPRISE PRODUCTS
OPERATING LLC. (2 LINES)

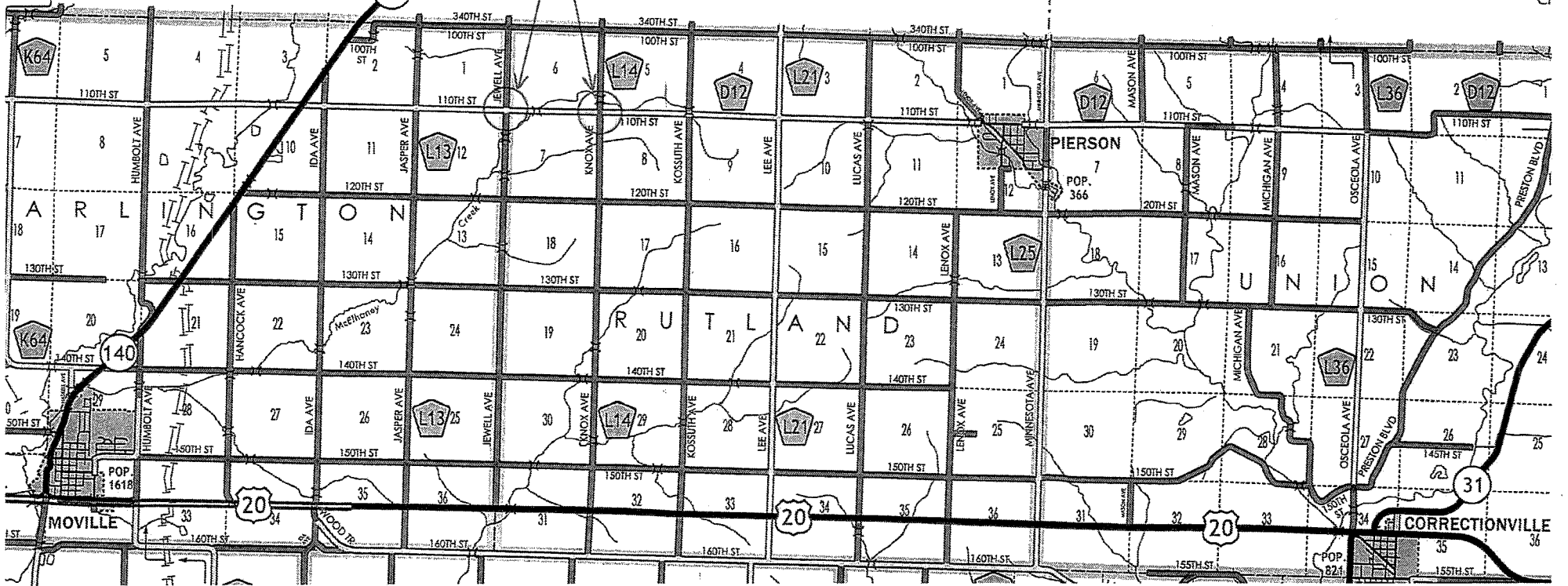
R-43W

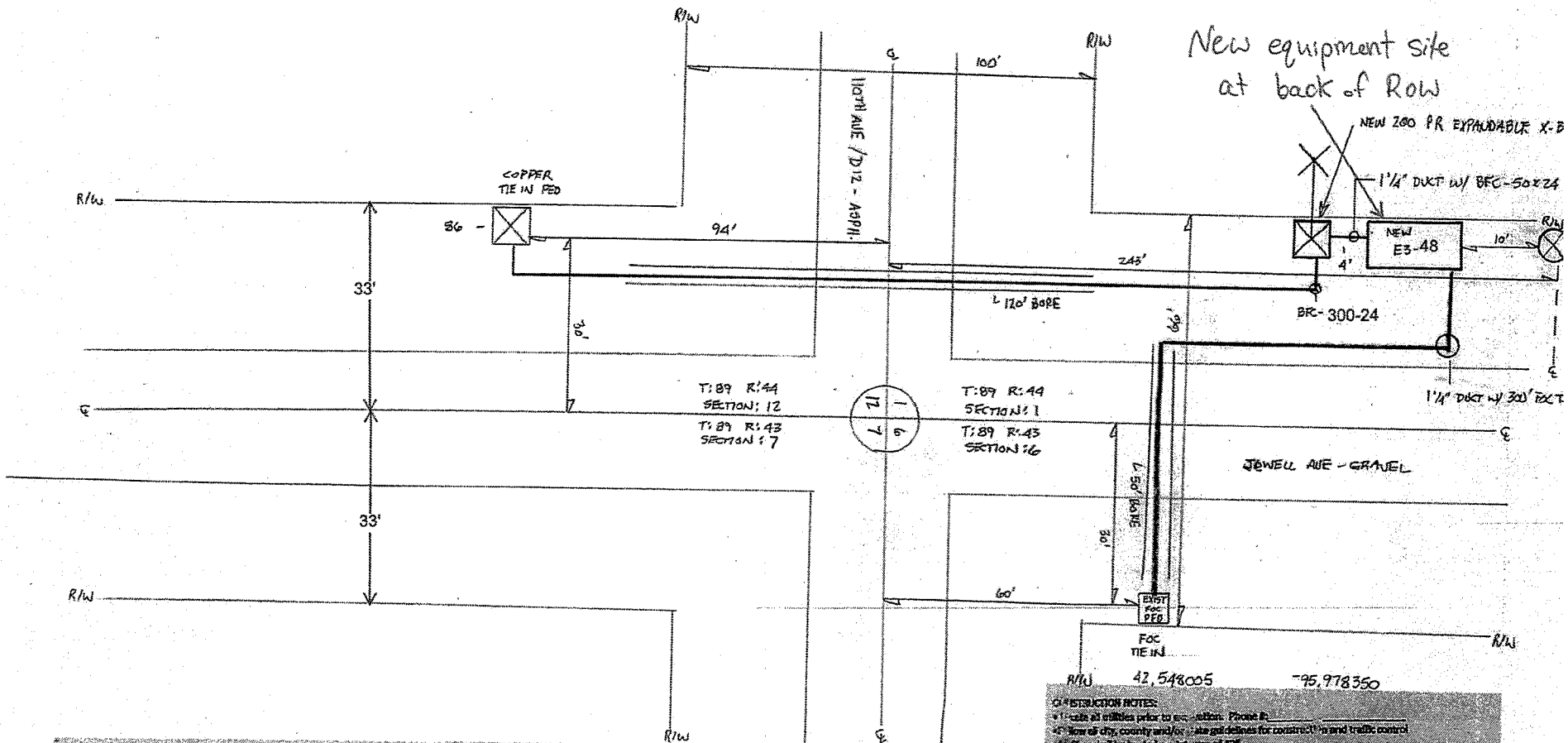
PLYMOUTH CO.

CHEROKEE CO.

R-42W

CI



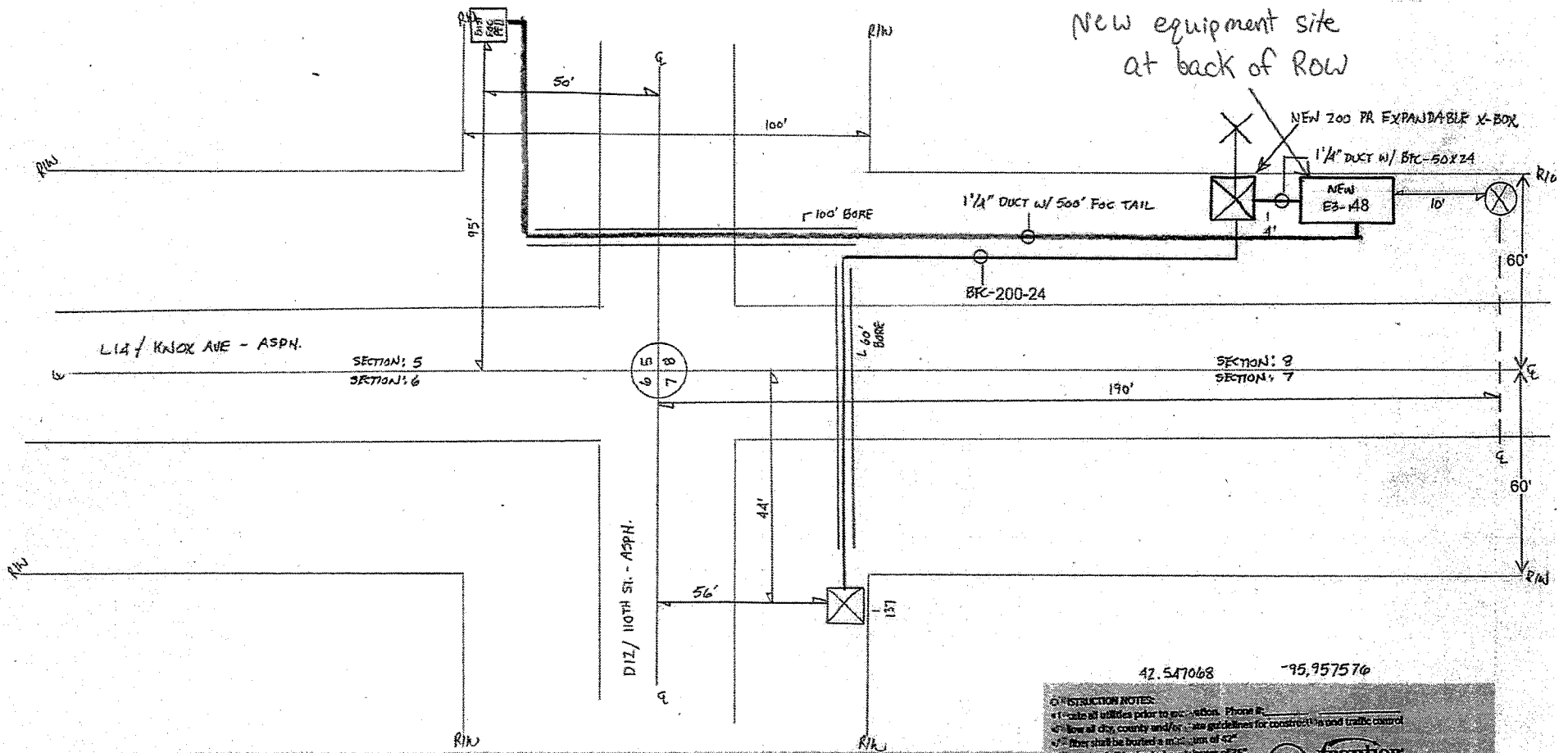


R/W 42.548005 -95.978350
 CONSTRUCTION NOTES:
 1. Call all utilities prior to excavation. Phone # _____
 2. Notify all city, county and local agencies for construction and traffic control.
 3. All fiber shall be buried a minimum of 36"
 4. All copper shall be buried a minimum of 36"
 5. All conduit/waterway crossings shall be bored
 6. 18" below all conduits

QTY	UNIT	DESC	QTY	UNIT	DESC	QTY	UNIT	DESC
340	BFC	TOTAL FIBER	180	P51A	PLOW (36")	175	P43D	PLACE COPPER IN CONDUIT
	BFC	TOTAL COPPER 300-24	180	P51E	X DEPTH (6")		P51F	PLOW ADDITIONAL CABLE (DUAL)
	P58B	AND HOLE (2'X3')	50	P51A	BORE TOTAL	16	L30A	HOURLY SPlicing
40	P51A	PEDESTAL (<12")	300	P43C	PLACE FIBER IN CONDUIT	16	E30A	HOURLY SPlicing
60	P55A	BACKHOE	120	L59A	BORE COPPER	12	L30A	COPPER SPlicing

PROJECT: CAF II - REMOTE SITE - 010
 DRAWING NO: JWB 2403923 REV. 06/16
 DATE: 7-29-17
 SCALE: N.T.S.
 DRAWN BY: H. TURKEL
 CHECKED BY: [Signature]
 PROJECT: [Signature]
 DATE: [Signature]

ED. ARE: RINGSDEN
 EXCH. CODE:
 ENTRE: Woodbury Co
 SHEET: 1 OF 1
 SEC:



42.547068 -95.957576

- CONSTRUCTION NOTES:
- * Call all utilities prior to excavation. Phone #:
 - * Follow all city, county and/or state guidelines for construction and traffic control.
 - * Fiber shall be buried a minimum of 42"
 - * Copper shall be buried a minimum of 36"
 - * Where/whenever crossing, shall be bored
 - * 18" below all conduits

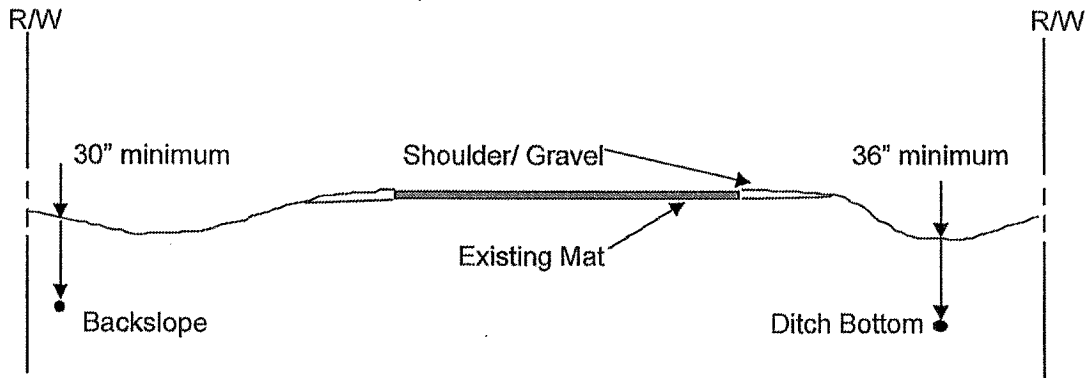


PROJECT: CAP II	REVISION: 008	JOB NO: 1088884	REV. ORG.
DATE: 7-29-17	BY: H. TORNER	FILE:	
SCALE: AS SHOWN	AK DISTRICT:	AK DISTRICT:	
TYPE: 09N	REV: 45W	REV: 45W	

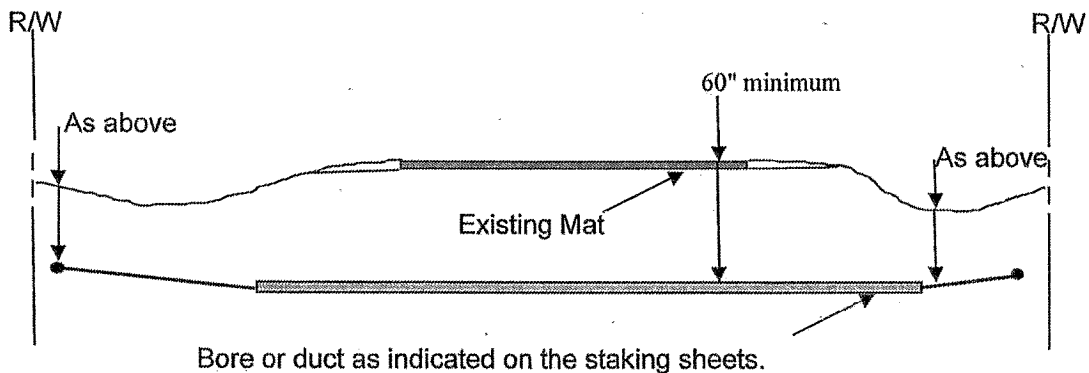
QTY	UNIT	DESC	QTY	UNIT	DESC	QTY	UNIT	DESC
240	BFO	TOTAL FIBER	190	P514	FLOW (36")	120	P43D	PLACE COPPER IN CONDUIT
	BFC	TOTAL COPPER	200-24	P51E	X DEPTH (6")	16	P51F	FLOW ADDITION CABLE (DUAL)
	P536	HAND HOLE (2'X3')	100	P51A	BORE TOTAL	16	L30A	HOURLY SPLICING
	P61A	PEDestal (12")	320	P43E	PLACE FIBER IN CONDUIT	12	E30A	HOURLY SPLICING
40	P55A	BACKHOE	60	P59A	BORE COPPER		L30A	COPPER SPLICING
40	P55A	BACKHOE COPPER						

TYPICAL INFORMATION REQUIRED FOR HIGHWAY PERMIT APPLICATION

CROSS SECTIONS



Typical depth(s) of longitudinal facilities occupying highway right-of-way.

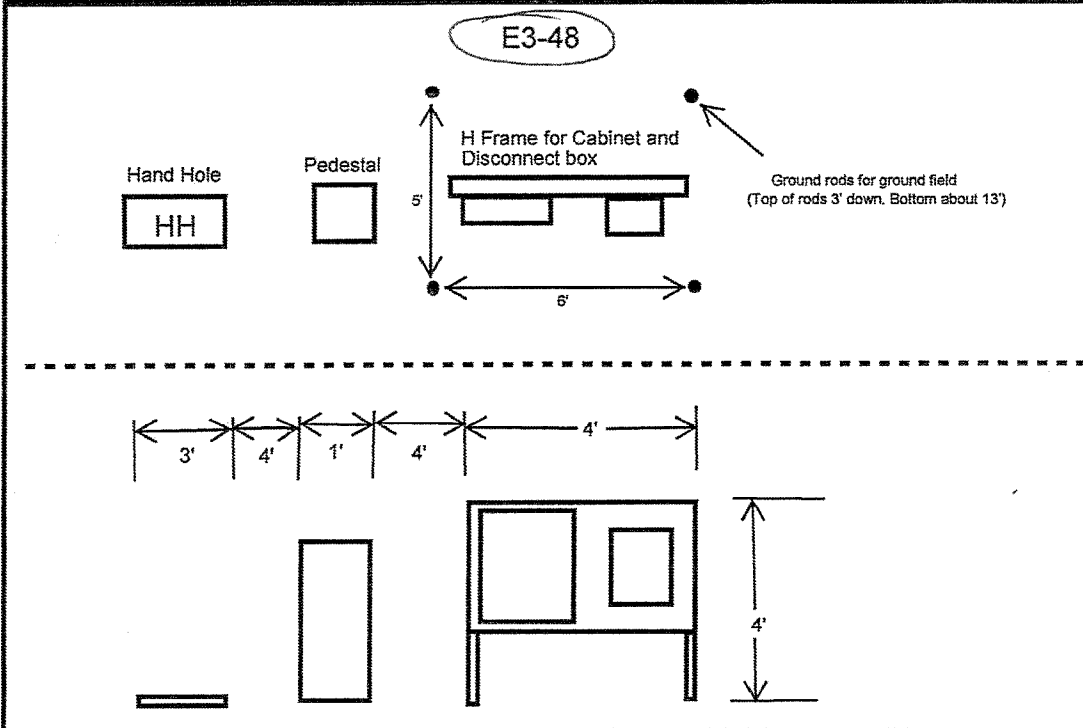
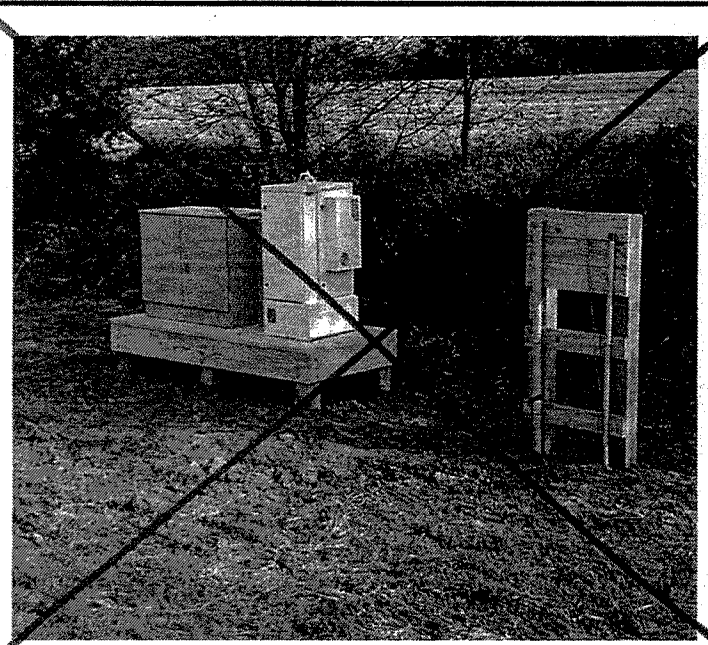
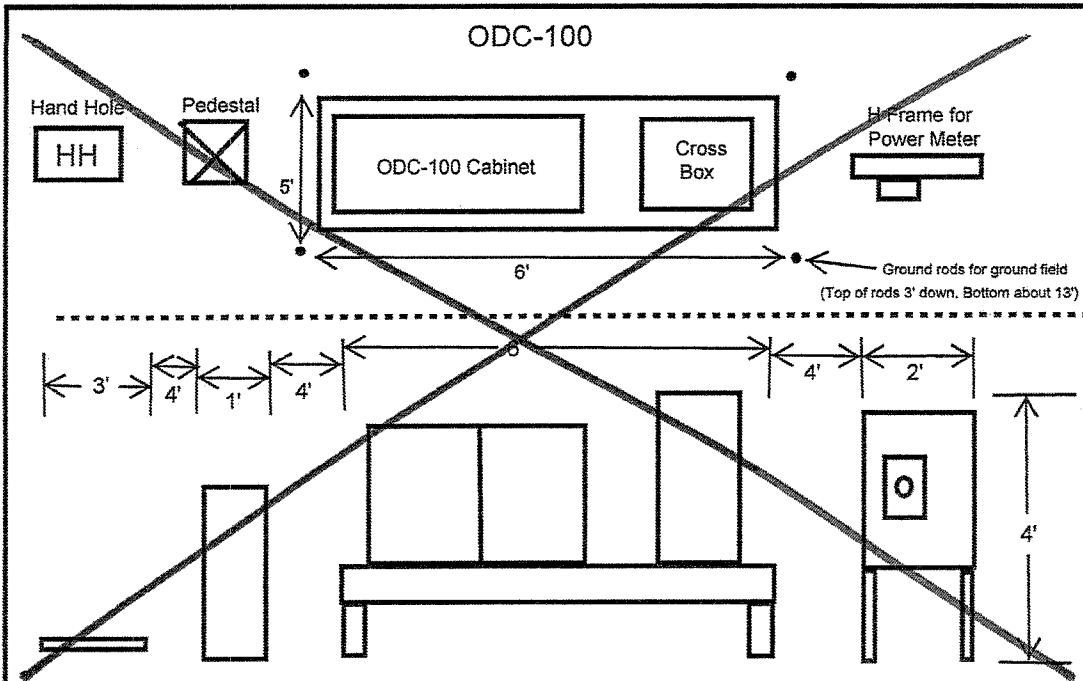


Bore or duct as indicated on the staking sheets.

Typical depth(s) of perpendicular facilities occupying highway right-of-way.

Notes: The distances from centerline are indicated on the staking sheets (plan views) for the areas involved with construction. See the Key Map for general locations of construction corridors. Clean up for the construction process will commence immediately and be completed no later than 10 working days later. Depths reflect *minimums* for copper and fiber cables. Actual placement depths may vary depending on contract requirements.

Town:	Range:	Section(s):
Company requesting permit:		



WOODBURY COUNTY BOARD OF SUPERVISORS AGENDA ITEM(S) REQUEST FORM

#10

Date: 9/7/17 Weekly Agenda Date: 9/12/17

ELECTED OFFICIAL / DEPARTMENT HEAD / CITIZEN: David Gleiser, RED Director

WORDING FOR AGENDA ITEM:

Discussion/Action - The 15th Tri-State Governors' Conference hosted by the Siouxland Chamber of Commerce

ACTION REQUIRED:

- | | | |
|--|---|--|
| Approve Ordinance <input type="checkbox"/> | Approve Resolution <input type="checkbox"/> | Approve Motion <input checked="" type="checkbox"/> |
| Public Hearing <input type="checkbox"/> | Other: Informational <input type="checkbox"/> | Attachments <input checked="" type="checkbox"/> |

EXECUTIVE SUMMARY:

The Board of Supervisors will discuss the 15th Tri-State Governors' Conference and decide whether or not they will designate specific county staff and elected officials to attend.

BACKGROUND:

IA Gov. Kim Reynolds, NE Gov. Pete Ricketts, and SD Gov. Dennis Daugaard will provide remarks over lunch (12-1pm), followed by an Issues Presentation (1-2:30pm). The event will be held at the Stoney Creek Hotel Conference Center on 9/26/17. Seating is first come, first served. However, if you purchase a table it will be reserved for your attendees. Registration deadline is 9/18/17.

FINANCIAL IMPACT:

\$50 per person
\$400 per table (seats 8)

IF THERE IS A CONTRACT INVOLVED IN THE AGENDA ITEM, HAS THE CONTRACT BEEN SUBMITTED AT LEAST ONE WEEK PRIOR AND ANSWERED WITH A REVIEW BY THE COUNTY ATTORNEY'S OFFICE?

Yes No

RECOMMENDATION:

Allow the Rural Economic Development Director to attend (paying out of his budget). If the Board of Supervisors wish to attend, direct the Board Administration office to register the Supervisors (paying out of the Board's budget).

ACTION REQUIRED / PROPOSED MOTION:

Motion to allow the Rural Economic Development Director to attend and pay the registration out of his budget. Motion to direct the Board Administration office to register Supervisors _____ and pay the registration out of the Board's budget.

Join us for the...

15th Tri-State Governors' Conference



Iowa Governor Kim Reynolds
Nebraska Governor Pete Ricketts
South Dakota Governor Dennis Daugaard

ITINERARY

~ 12:00 noon – 1:00 p.m.

Lunch including Governors' Remarks

~ 1:00 p.m. – 2:30 p.m. ~

Issues Presentation

Tuesday, September 26, 2017

Stoney Creek Hotel & Conference Center
300 3rd St.
Sioux City, Iowa

Conference Fee: \$50.00/person

Registration...

Please submit the completed form with payment **no later than Monday, September 18, 2017:**

Siouxland Chamber of Commerce
101 Pierce Street
Sioux City, IA 51101
Fax: 712.258.7578

E-Mail: trosenboom@siouxlandchamber.com

Name _____

Company _____

E-mail Address _____

Please reserve ___ ticket(s) @ \$50.00 per person (Tables will seat 8)

List names of all guests attending: _____

Check is enclosed

Please apply to: Visa MasterCard Discover

Name on Card _____

Card # _____

Exp. Date _____ CVV# (from the back of card) _____

Card Billing Street Address _____

Card Billing City/State/Zip _____

Phone # _____

Questions?
Contact Barbara Sloniker
or Teresa Rosenboom
at 712.255.7903

Siouxland
Chamber
of Commerce

WOODBURY COUNTY BOARD OF SUPERVISORS AGENDA ITEM(S) REQUEST FORM

Date: 9/7/2017 Weekly Agenda Date: 9/12/2017

ELECTED OFFICIAL / DEPARTMENT HEAD / CITIZEN: Mark J. Nahra, County Engineer

WORDING FOR AGENDA ITEM:

Consider award of Project number LFM-(L1)--73-97

ACTION REQUIRED:

- Approve Ordinance
- Approve Resolution
- Approve Motion
- Public Hearing
- Other: Informational
- Attachments

EXECUTIVE SUMMARY:

The county received bids for the above captioned bridge project on September 5, 2017. The bids have been reviewed and an award is recommended.

BACKGROUND:

The county engineer completed plans for the replacement of a bridge on 160th Street west of Cushing for bridge number L1. The bridge is load restricted due to deterioration of the substructure. The new structure is a precast box culvert.

FINANCIAL IMPACT:

The project is funded with local secondary road funding.

IF THERE IS A CONTRACT INVOLVED IN THE AGENDA ITEM, HAS THE CONTRACT BEEN SUBMITTED AT LEAST ONE WEEK PRIOR AND ANSWERED WITH A REVIEW BY THE COUNTY ATTORNEY'S OFFICE?

Yes No

RECOMMENDATION:

Recommend that the board award the bridge project to Dixon Construction, Inc. of Correctionville, Iowa for \$145,852.80.

ACTION REQUIRED / PROPOSED MOTION:

Motion that the board award the bridge project to Dixon Construction, Inc. of Correctionville, Iowa for \$145,852.80.

TABULATION OF BIDS

PROJECT NO. LFM-(L1)--73-97
 LETTING: TUESDAY, September 05, 2017
 RCB Culvert
 IN SECTION 2 T88N, R43W

NOTE: IN CASE OF MATHEMATICAL ERROR, UNIT PRICE SHALL GOVERN

		***** ** ** ** ** ** *****		***** * * * * * *****		***** * * * * * *****		***** * * * * * *****		***** * * * * * *****		***** * * * * * *****		
			** Engineer's Estimate	* Dixon Const * 409 Driftwood * PO Box * Correctionville, Iowa 51016	* Midwest Contracting * 2948 271st Ave. * Marshall, Minnesota 56258	* Nelson & Rock * 23565 Hwy K45 * Onawa, Iowa 51040	* Peterson Contractors * 104 Black Hawk St. * Reinbeck, Iowa 50669	* L.A. Carlson * 20984 C43 * Merrill, Iowa 51038						
ITEM NO	ITEM	QUANTITIES	UNIT PRICE	AMOUNT	UNIT PRICE	AMOUNT	UNIT PRICE	AMOUNT	UNIT PRICE	AMOUNT	UNIT PRICE	AMOUNT	UNIT PRICE	AMOUNT
1	Clearing and Grubbing	0.10 Acres	\$ 4,000.00	\$ 400.00	\$ 10,000.00	\$ 1,000.00	\$ 6,000.00	\$ 600.00	\$ 10,000.00	\$ 1,000.00	\$ 9,000.00	\$ 900.00	\$ 15,000.00	\$ 1,500.00
2	Excav Class 10 Rdway & Borrow	526 Cu.Yds	\$ 7.00	\$ 3,682.00	\$ 20.00	\$ 10,520.00	\$ 12.00	\$ 6,312.00	\$ 15.00	\$ 7,890.00	\$ 6.50	\$ 3,419.00	\$ 18.00	\$ 9,468.00
3	Modified Base	49 Cu.Yds	\$ 65.00	\$ 3,185.00	\$ 70.00	\$ 3,430.00	\$ 69.00	\$ 3,381.00	\$ 70.00	\$ 3,430.00	\$ 68.00	\$ 3,332.00	\$ 95.00	\$ 4,655.00
4	Granular Shoulders, Type B	36 Ton	\$ 45.00	\$ 1,620.00	\$ 57.00	\$ 2,052.00	\$ 44.00	\$ 1,584.00	\$ 50.00	\$ 1,800.00	\$ 39.00	\$ 1,404.00	\$ 65.00	\$ 2,340.00
5	PCC Pavement 9"	244.44 SY	\$ 75.00	\$ 18,333.00	\$ 70.00	\$ 17,110.80	\$ 100.00	\$ 24,444.00	\$ 60.50	\$ 14,788.62	\$ 100.00	\$ 24,444.00	\$ 97.00	\$ 23,710.68
6	Removal of Existing Bridge	1 L.S.	\$ 26,000.00	\$ 26,000.00	\$ 10,000.00	\$ 10,000.00	\$ 7,500.00	\$ 7,500.00	\$ 15,000.00	\$ 15,000.00	\$ 9,500.00	\$ 9,500.00	\$ 7,500.00	\$ 7,500.00
7	Granular Backfill	249 Cu.Yds	\$ 35.00	\$ 8,715.00	\$ 50.00	\$ 12,450.00	\$ 36.00	\$ 8,964.00	\$ 25.93	\$ 6,456.57	\$ 31.75	\$ 7,905.75	\$ 45.00	\$ 11,205.00
8	Excavation Class 20	439 Cu. Yds	\$ 10.00	\$ 4,390.00	\$ 10.00	\$ 4,390.00	\$ 10.00	\$ 4,390.00	\$ 10.00	\$ 4,390.00	\$ 4.50	\$ 1,975.50	\$ 15.00	\$ 6,585.00
9	Excavate and Dewater	1 L.S.	\$ 5,000.00	\$ 5,000.00	\$ 1,500.00	\$ 1,500.00	\$ 1,500.00	\$ 1,500.00	\$ 1,000.00	\$ 1,000.00	\$ 1,500.00	\$ 1,500.00	\$ 2,500.00	\$ 2,500.00
10	Precast Concrete Box 12' x 6'	58 L.F.	\$ 900.00	\$ 52,200.00	\$ 700.00	\$ 40,600.00	\$ 950.00	\$ 55,100.00	\$ 927.25	\$ 53,780.50	\$ 830.00	\$ 48,140.00	\$ 810.00	\$ 46,980.00
11	Precast Concrete Box End Sec	2 Each	\$ 18,000.00	\$ 36,000.00	\$ 13,000.00	\$ 26,000.00	\$ 15,000.00	\$ 30,000.00	\$ 15,838.00	\$ 31,676.00	\$ 14,750.00	\$ 29,500.00	\$ 14,000.00	\$ 28,000.00
12	Temporary Stream Diversion	1 L.S.	\$ 6,000.00	\$ 6,000.00	\$ 1,500.00	\$ 1,500.00	\$ 3,000.00	\$ 3,000.00	\$ 5,000.00	\$ 5,000.00	\$ 2,850.00	\$ 2,850.00	\$ 2,500.00	\$ 2,500.00
13	Safety Closure	2 Each	\$ 500.00	\$ 1,000.00	\$ 300.00	\$ 600.00	\$ 100.00	\$ 200.00	\$ 250.00	\$ 500.00	\$ 150.00	\$ 300.00	\$ 500.00	\$ 1,000.00
14	Traffic Control	1 L.S.	\$ 3,000.00	\$ 3,000.00	\$ 3,400.00	\$ 3,400.00	\$ 1,400.00	\$ 1,400.00	\$ 2,000.00	\$ 2,000.00	\$ 2,000.00	\$ 2,000.00	\$ 750.00	\$ 750.00
15	Mobilization	1 L.S.	\$ 28,900.00	\$ 28,900.00	\$ 10,000.00	\$ 10,000.00	\$ 26,000.00	\$ 26,000.00	\$ 10,000.00	\$ 10,000.00	\$ 16,800.00	\$ 16,800.00	\$ 7,500.00	\$ 7,500.00
16	Mulching	.10 Acre	\$ 3,600.00	\$ 360.00	\$ 6,500.00	\$ 650.00	\$ 5,000.00	\$ 500.00	\$ 5,000.00	\$ 500.00	\$ 15,000.00	\$ 1,500.00	\$ 12,500.00	\$ 1,250.00
17	Seeding and Fertilizing (Rural)	.10 Acre	\$ 3,600.00	\$ 360.00	\$ 6,500.00	\$ 650.00	\$ 5,000.00	\$ 500.00	\$ 5,000.00	\$ 500.00	\$ 20,000.00	\$ 2,000.00	\$ 12,500.00	\$ 1,250.00
TOTAL				\$ 199,145.00		\$ 145,852.80		\$ 175,375.00		\$ 159,711.69		\$ 157,470.25		\$ 158,693.68

SUMMARY OF BIDS

1) Dixon Const.	\$ 145,852.80
2) Peterson Contractors	\$ 157,470.25
3) L.A. carlson	\$ 158,693.68
4) Nelson & Rock	\$ 159,711.69
5) Midwest Contracting	\$ 175,375.00

Engineer's Est. \$ 199,145.00

WOODBURY COUNTY BOARD OF SUPERVISORS AGENDA ITEM(S) REQUEST FORM

Date: 9/7/2017 Weekly Agenda Date: 9/12/2017

ELECTED OFFICIAL / DEPARTMENT HEAD / CITIZEN: Mark J. Nahra, County Engineer

WORDING FOR AGENDA ITEM:

Reject quotes for Slurry Levelers 2017

ACTION REQUIRED:

- Approve Ordinance
- Approve Resolution
- Approve Motion
- Public Hearing
- Other: Informational
- Attachments

EXECUTIVE SUMMARY:

The county engineer has prepared plans for the application of slurry levelers on various HMA paved roads and bridge approaches in Woodbury County.

BACKGROUND:

The county received on bid for placement of slurry levelers for its HMA paved road system. The proposed project was scheduled to be completed during the 2017 construction season. Bids came in almost double the engineers estimate and beyond what was budgeted for this work

FINANCIAL IMPACT:

The project is paid for with local Woodbury County secondary road funds.

IF THERE IS A CONTRACT INVOLVED IN THE AGENDA ITEM, HAS THE CONTRACT BEEN SUBMITTED AT LEAST ONE WEEK PRIOR AND ANSWERED WITH A REVIEW BY THE COUNTY ATTORNEY'S OFFICE?

Yes No

RECOMMENDATION:

Recommend that the board reject the quote and allow the county engineer to revise the project scope and rebid the work.

ACTION REQUIRED / PROPOSED MOTION:

Motion that the board reject the quote for project HMA Levelers 2017 and allow the county engineer to revise the project scope and rebid the work at a later date.

#12a



United States Department of the Interior

BUREAU OF INDIAN AFFAIRS
Winnebago Agency
Route 1, Box 18
Winnebago, Nebraska 68071

AUG 31 2017 AM 10:48

IN REPLY REFER TO:
Real Property Management
(402) 878-2475
(402) 878-2943 Fax

AUG 29 2017

CERTIFIED MAIL-RETURN RECEIPT REQUESTED – 7016 3010 0000 1898 1474

Woodbury County Board of Supervisors
Marty Pottebaum – District 3
620 Douglas Street
Sioux City, Iowa 51101

Dear Mr. Pottebaum:

With this official notification, the Bureau of Indian Affairs, Winnebago Agency, Winnebago, Nebraska has under consideration, an application of land to be taken into trust by the United States of America, for the use and benefit of the Winnebago Tribe of Nebraska. The proposed use of the property is for agricultural purposes working toward economic development for the tribal members of the Winnebago Tribe.

The property is described as follows:

Section 27 in Township 86 North, Range 47 West of the 5th P.M., **Woodbury County**, Iowa, Government Lot 3 in all that part of the SW¹/₄ SE¹/₄ and SE¹/₄ SE¹/₄ described as follows:

Beginning at the SW corner of the SW¹/₄ SE¹/₄ of said Section 27; thence northerly along the westerly line of the SE¹/₄ on an assumed bearing of N00°01'15"W (with all subsequent bearings referenced therefrom) for a distance of 1312.75' to the NW corner of the SW¹/₄ SE¹/₄; thence N88°18'59"E along the northerly line of said quarter-quarter for a distance of 2009.48 feet; thence S48°21'22"W for a distance of 97.99 feet to a point on the centerline of the Sandhill-Lakeport Inter-County Ditch; the following courses are along the Ditch centerline; thence S39°19'47"W for a distance of 64.41 feet; thence S26°03'53"W for a distance of 96.33 feet; thence S18°51'38"W for a distance of 759.27 feet; thence S18°24'38"W for a distance of 143.47 feet; thence S21°58'56"W for a distance of 185.08 feet; thence S16°33'19"W for a distance of 104.63 feet to a point on the Southerly line of Section 27; thence S88°16'53"W along said section line for a distance of 1459.13 feet to the SW corner of the SE¹/₄ and Point of Beginning containing 51.07 acres more or less.

AND

Section 33 in Township 86 North, Range 47 West of the 5th P.M., **Woodbury County**, Iowa, a parcel of land located the S¹/₂ SW¹/₄ and the S¹/₂ SE¹/₄, described as follows;

Beginning at the SE corner of Section 33; thence westerly along the southerly line of the SE¹/₄ on an assumed bearing of S89°20'216"W (with all subsequent bearings referenced therefrom) for a distance of 2640.60 feet to the SE corner of the SW¹/₄; thence S89°20'13"W along the southerly line of the SW¹/₄ a distance of 2640.43 feet to the SW corner of the SW¹/₄; thence N00°39'47"W along the westerly line of

said section for a distance of 1120.01 feet to the SW corner of a previously recorded parcel; thence N89°21'29"E, a distance of 472.51 feet; thence N00°40'27"W for a distance of 200.17 feet to a point on the Southerly Boundary Line of the Winnebago Indian Reservation; thence S89°20'22"W along said Boundary line for a distance of 4823.93 feet to a point on the easterly line of Section 33; thence S00°00'15"W along said section line for a distance of 1320 feet to the SE corner of said Section 33, the Point Beginning containing 158.09 acres more or less.

AND

Section 34 in Township 86 North, Range 47 West of the 5th P.M., **Woodbury County**, Iowa. A parcel of land located the N½ NW¼, SW¼ NW¼, Gov't Lot 2, W½ SW¼, E½ SW¼, and the NW¼ SE¼, described as follows:

Beginning at the NW corner of Section 34; thence easterly along the northerly line of said section on an assumed bearing of N88°16'56"E (with all subsequent bearings referenced therefrom) for a distance of 2628.36 feet to the NE corner of the N½NW¼; thence S01°30'11"E along the easterly line of said NW¼ for a distance of 1293.75 feet to the SW corner of the N½ NW¼; thence N88°30'24"E for a distance of 747.02 feet to the NE corner of Gov't Lot 2, said point also being on the centerline of the Sandhill-Lakeport Inter-County Ditch; the following courses being along the centerline of said ditch; thence S24°05'46"W for a distance of 246.99 feet; thence S24°40'18"W for a distance of 487.06 feet; thence S24°53'57"W, 708.08 feet to a point on the southerly line of Government Lot 2 thence S24°10'43"W for a distance of 375.57 feet; thence S24°32'23"W for a distance of 2130.19 feet; thence S19°22'22"W for a distance of 238.84 feet; thence S03°15'36"W for a distance of 90.21 feet to a point of the southerly line of the SW¼; thence S89°20'37"W along said southerly line for a distance of 362.16 feet to the SE corner of SW¼ SW¼; thence continuing S89°20'37"W along the southerly section line for a distance of 1319.73 feet to the SW Quarter corner of said section; thence N00°00'15"E along the westerly section line for a distance of 2560.66 feet to the W¼ corner; thence N00°00'15"W continuing along said section line for a distance of 2559.71 feet to the NW corner of said Section, the Point of Beginning containing 300.81 acres more or less.

The following are the statutory authorities that allow for acquiring land for Indians (both tribes and individual Indians) are the Indian Reorganization Act (IRA) of 1934, 25 U.S.C.§465, 45 Federal Register 62036 (September 18, 1980) and 25 CFR Part 151.

The determination to acquire or not to acquire this property in trust will be made in the exercise of the Secretary of the Interior's discretionary authority. To assist the Secretary in the exercise of the discretion, and pursuant to the regulations in Title 25 Code of Federal Regulations, Part 151, entitled Land Acquisitions, we invite your comments on the proposed acquisition. In order for the Secretary to assess the impact of the removal of this property from the tax rolls, we also request the following information.

1. The annual amount of property taxes currently levied on the property,
2. Any special assessments and amount thereof, which are currently assessed against the property,
3. Any governmental services which are currently provided to the property in your jurisdiction,
4. If subject to zoning, how the property is currently zoned.

Please address the information and comments to the Bureau of Indian Affairs, Winnebago Agency, Rt. 1, Box 18, Winnebago, Nebraska, 68071, to the attention of Mr. Monte D. LeBeau, Superintendent. Any comments received within thirty (30) days of the date of receipt of this letter at the above address will be

considered. You may be granted an extension of time to furnish comments, provided, you submit written justification requesting such an extension within thirty (30) days of receipt of this letter. An extension of ten (10) to thirty (30) days may be granted. Your comments will be made available to the applicant. You will be notified of the decision to approve or deny the application. Also, please forward this consultation notice to interested sub-districts.

A copy of the application, excluding any documents exempted under the Freedom of Information Act, is available for review at the address above. Please contact the Branch of Realty at 402-878-2475 to make an appointment to review the application.

Sincerely,

A handwritten signature in black ink, appearing to read "Monte D. LeBeau". The signature is fluid and cursive, with the first name being the most prominent.

Monte D. LeBeau
Superintendent, Winnebago Agency

cc: Winnebago Tribe of Nebraska (7016 3010 0000 1898 1481)
Frank White, Chairman
P. O. Box 687
Winnebago, Nebraska



Woodbury County Sheriff's Office

DAVID A. DREW, SHERIFF

WOODBURY COUNTY JAIL WEEKLY POPULATION REPORT AT 0600 HRS.

LEC 24 HOUR DAILY COUNT

DATE	DAILY TOTAL	LEC	ELECTRONIC MONITORING	JUVENILE	FEDERAL PRISONERS	RELEASED
8/1/17	202	185	13	4	15	21
8/2/17	204	187	13	4	15	26
8/3/17	207	190	13	4	15	28
8/4/17	211	194	13	4	16	24
8/5/17	214	196	14	4	16	21
8/6/17	214	197	14	3	16	19
8/7/17	207	190	14	3	16	17
8/8/17	197	178	16	3	16	25
8/9/17	205	187	16	2	17	12
8/10/17	211	195	14	2	16	22
8/11/17	202	186	14	2	16	31
8/12/17	208	190	16	2	17	30
8/13/17	204	186	16	2	17	14
8/14/17	210	192	16	2	17	17
8/15/17	219	202	15	2	17	20
8/16/17	215	199	13	3	18	28
8/17/17	206	192	11	3	23	23
8/18/17	198	185	11	2	14	26
8/19/17	201	187	12	2	14	16
8/20/17	206	192	12	2	14	10
8/21/17	197	183	12	2	14	18
8/22/17	204	188	14	2	14	7
8/23/17	211	195	14	2	16	14
8/24/17	209	192	15	2	15	22
8/25/17	208	192	15	1	16	23
8/26/17	212	196	15	1	17	22
8/27/17	224	208	15	1	17	19
8/28/17	211	195	15	1	17	27
8/29/17	211	195	15	1	16	24
8/30/17	208	192	15	1	17	19
8/31/17	200	184	15	1	16	24
	6436	5930	436	70	500	649

TOTAL	MALE	FEMALE
206	176	30
213	184	29
218	187	31
218	182	36
217	180	37
216	182	34
207	176	31
203	174	29
199	169	30
217	189	28
217	185	32
220	183	37
200	161	39
209	179	30
222	186	36
227	189	38
215	180	35
211	175	36
203	166	37
202	163	39
201	167	34
195	160	35
209	173	36
214	180	34
215	180	35
218	174	44
227	181	46
222	177	45
219	173	46
211	166	45
208	163	45
6579	5460	1119

*Highest population count each day

LEC TOTAL AVG:	211.4
TOTAL INMATE AVG:	228.5

WOODBURY COUNTY JUVENILE DETENTION CENTER

Trosper-Hoyt Bldg.
822 Douglas St. - 4th Floor
Sioux City, Iowa 51101

Phone 712-279-6622
Email: molsen@sioux-city.org
Fax 712-234-2900

6:00 a.m.

6:00 p.m.

August, 2017

August 21, 2017		8
August 22, 2017	8	8
August 23, 2017	8	8
August 24, 2017	8	8
August 25, 2017	17	17
August 26, 2017	17	17
August 27, 2017	17	17
August 28, 2017	17	

The Center averaged 13.1 residents per day during the 6 am head count and 11.9 during the 6 pm check, for a weekly average of 12.5 residents per day during the above week.

Of the seventeen residents detained on August 28, 2017, seven or forty one percent were identified as gang members. Of the seven, three or forty three percent were identified as highly active.

The Center is currently detaining nine BIA, two Thurston County and one Dakota County

Mark Olsen


Director

WCJDC

August 28, 2017

WOODBURY COUNTY JUVENILE DETENTION CENTER

Trosper-Hoyt Bldg.
822 Douglas St. - 4th Floor
Sioux City, Iowa 51101

Phone 712-279-6622
Email: molsen@sioux-city.org
Fax 712-234-2900

6:00 a.m.

6:00 p.m.

August, 2017

August 28, 2017		17
August 29, 2017	17	17
August 30, 2017	17	17
August 31, 2017	17	16

September, 2017

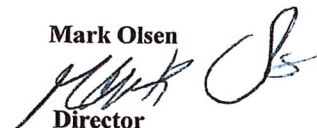
September 1, 2017	17	17
September 2, 2017	17	17
September 3, 2017	17	17
September 4, 2017.	17	

The Center averaged 17 juveniles during the 6 am and 6 pm count during the above week for an over-all average of 17 juveniles per day.

Of the seventeen residents detained on September 4, 2017, eight or forty seven percent were identified as gang members. Of the eight, two or twenty five percent were identified as hard-core members.

The Center is currently detaining nine BIA juveniles, and two from Thurston County.

Mark Olsen



Director
WCJDC

September 4, 2017