



NOTICE OF MEETING OF THE WOODBURY COUNTY BOARD OF SUPERVISORS
(JANUARY 2, 2019) (WEEK 1 OF 2019)

Agenda and Minutes also available at
www.woodburycountyiowa.gov

Rocky L. DeWitt 253-0421 rdewitt@woodburycountyiowa.gov
Marty J. Pottebaum 251-1799 mpottebaum@woodburycountyiowa.gov
Keith W. Radig 560-6542 kradig@woodburycountyiowa.gov
Jeremy J. Taylor 259-7910 jtaylor@woodburycountyiowa.gov
Matthew A. Ung 490-7852 matthewung@woodburycountyiowa.gov

You are hereby notified a meeting of the Woodbury County Board of Supervisors will be held January 2, 2019 at 2:00 p.m. in the Basement of the Courthouse, 620 Douglas Street, Sioux City, Iowa for the purpose of taking official action on the agenda items shown hereinafter and for such other business that may properly come before the Board.

This is a formal meeting during which the Board may take official action on various items of business. If you wish to speak on an item, please follow the seven participation guidelines adopted by the Board for speakers.

- 1. Anyone may address the Board on any agenda item after initial discussion by the Board.
2. Speakers will approach the microphone one at a time and be recognized by the Chair.
3. Speakers will give their name, their address, and then their statement.
4. Everyone will have an opportunity to speak. Therefore, please limit your remarks to three minutes on any one item.
5. At the beginning of the discussion on any item, the Chair may request statements in favor of an action be heard first followed by statements in opposition to the action.
6. Any concerns or questions you may have which do not relate directly to a scheduled item on the agenda will also be heard under the first or final agenda item "Citizen Concerns."
7. For the benefit of all in attendance, please turn off all cell phones and other devices while in the Board Chambers.

AGENDA

- 1:00 p.m. 1. Closed Session {Iowa Code Section 21.5 (1) (c)}
To discuss matters that are presently in litigation or litigation is imminent
First Floor Boardroom
1:30 p.m. 2. Closed Session {Iowa Code Section 21.5 (1) (c)}
To discuss matters that are presently in litigation or litigation is imminent
First Floor Boardroom
2:00 p.m. 3. State of the Budget presentation – Dennis Butler Information
4. Budget Review Discussion for FY 2020 Page
a. General Relief
1. Administration – General Basic 1
2. Assistance – General Basic 2
b. Department of Human Services – General Basic 1 - 2
c. Board of Supervisors
1. Woodbury County Solid Waste – Rural Basic 49
2. Miscellaneous Refunds – General Basic 3
3. Medical Examiner – General Basic 4 - 5
4. Soil Conservation – Currently Funded thru L.O.S.T.
5. Public Bidder – General Basic 13 - 14
6. Mail Services – General Basic 15
7. District Court Operations – General Supplemental 30 - 31

	8. Court Appointed Juvenile Attorneys – General Supplemental	32
	9. Risk Management Services – General Supplemental	33
	10. Board of Supervisors Expense – General Basic	7 - 9
	11. Board Administration – General Basic	10 - 2
	12. Sheriff Training Center – Non - Tax	41 - 44
	13. Starcom Program – General Supplemental	29
	<b>d. County Library – Rural Basic</b>	2 - 9
	<b>e. County Treasurer</b>	
	1. Motor Vehicle – General Basic	2 - 3
	2. Tax Department - General Basic	7 - 10
	<b>f. Civil Service – General Basic</b>	1
	<b>g. Emergency Management – General Supplemental</b>	28
	<b>h. Human Resources – General Basic</b>	3 - 4
<b>4:00 p.m.</b>	5. Swearing in of Elected Officials	
	a. County Board of Supervisors – Jeremy Taylor	
	b. County Board of Supervisors – Matthew Ung	
	c. County Attorney – PJ Jennings	
	d. County Treasurer – Michael Clayton	
	6. Call Meeting to Order – Pledge of Allegiance to the Flag – Moment of Silence	
	7. Adoption of Current Board of Supervisors Bylaws	Action
	8. Election of Temporary Chair to preside over Election of Chairperson	Action
	9. Election of Chairperson	Action
	10. Election of Vice- Chairperson	Action
	11. Citizen Concerns	Information
	12. Approval of the agenda	Action

### **Consent Agenda**

**Items 13 through 19 constitute a Consent Agenda of routine action items to be considered by one motion. Items pass unanimously unless a separate vote is requested by a Board Member.**

13. Approval of the minutes of the December 26, 2018 meeting
14. Approval of claims
15. Approval of Appointments of:
  - a. County Engineer – Mark Nahra
  - b. County Medical Examiner – Dr. Julie Breiner
  - c. County Weed Commissioner – Jered Jepsen
  - d. County Official Newspapers
  - e. County Representation to the Third Judicial Department of Correctional Services

16. Approval of Various Boards/Commissions
  - a. Conservation Board
  - b. Siouxland District Board of Health
  - c. Commission to Assess Damages
  
17. Human Resources – Melissa Thomas  
 Authorize Chairman to sign property and casualty policies with One Beacon and Travelers Insurance for calendar year 2019
  
18. Public Bidder – Heather Satterwhite
  - a. Approval of Notice of Property Sale Resolution for Parcel #894729177013 (aka 423 Myrtle Street) for Tuesday, January 15<sup>th</sup> at 4:35 p.m.
  - b. Approval of Notice of Property Sale Resolution for Parcel #894721451009 (aka 836 17th Street) for Tuesday, January 15<sup>th</sup> at 4:37 p.m.
  
19. Secondary Roads – Mark Nahra
  - a. Consideration of resolution authorizing the County Engineer to close roads for construction, maintenance, and emergencies during 2019
  - b. Consideration of resolution authorizing the County Engineer to execute certification of completion of work on Federal Aid, State Aid and Farm to Market Construction during 2019

**End Consent Agenda**

- |  |             |
|--|-------------|
| 20. Board of Supervisors – Jeremy Taylor<br>Rolling Hills Region Governance Board Meeting & Update | Information |
| 21. Reports on Committee Meetings  | Information |
| 22. Citizen Concerns   | Information |
| 23. Board Concerns   | Information |

**ADJOURNMENT**

*Subject to Additions/Deletions*

## CALENDAR OF EVENTS

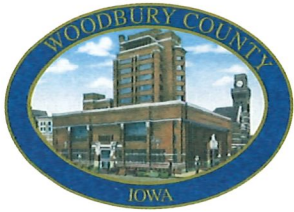
- TUES., JAN. 8**      **4:45 p.m.** Veteran Affairs Meeting, Veteran Affairs Office, 1211 Tri-View Ave.
- WED., JAN. 9**      **8:05 a.m.** Woodbury County Information Communication Commission, First Floor Boardroom
- 10:00 a.m.** STARComm Board Meeting, Security Institute
- 12:00 p.m.** District Board of Health Meeting, 1014 Nebraska St.
- 6:30 p.m.** E911 Service Board Meeting, Climbing Hill Disaster Services Class Room
- 8:00 p.m.** County's Mayor Association Meeting, Public Safety Center, Climbing Hill
- THUR., JAN. 10**    **12:00 p.m.** SIMPCO Board of Directors, 1122 Pierce St.
- 4:30 p.m.** Conservation Board Meeting, Dorothy Pecaut Nature Center, Stone Park
- WED., JAN. 16**    **10:00 a.m.** Siouxland Center for Active Generations Board of Directors Meeting, 313 Cook St.
- 12:00 p.m.** Siouxland Economic Development Corporation Meeting, 617 Pierce St., Ste. 202
- THUR., JAN. 17**    **4:30 p.m.** Community Action Agency of Siouxland Board Meeting, 2700 Leech
- TUES., JAN. 22**    **1:00 p.m.** Sioux Rivers Regional Governance Board Meeting, Plymouth County Courthouse Annex Building, 215 4th Ave. S.E., Le Mars, Iowa
- 2:00 p.m.** Decat Board Meeting, Western Hills AEA, Room F
- THURS, JAN.24**    **11:00 a.m.** Siouxland Regional Transit Systems (SRTS) Board Meeting, SIMPCO Office, 1122 Pierce St.

**The following Boards/Commission have vacancies:** Commission To Assess Damages - Category A, Category B, Category C and Category D

**Woodbury County is an Equal Opportunity Employer. In compliance with the Americans with Disabilities Act, the County will consider reasonable accommodations for qualified individuals with disabilities and encourages prospective employees and incumbents to discuss potential accommodations with the Employer.**

*Federal and state laws prohibit employment and/or public accommodation discrimination on the basis of age, color, creed, disability, gender identity, national origin, pregnancy, race, religion, sex, sexual orientation or veteran's status. If you believe you have been discriminated against, please contact the Iowa Civil Rights Commission at 800-457-4416 or Iowa Department of Transportation's civil rights coordinator. If you need accommodations because of a disability to access the Iowa Department of Transportation's services, contact the agency's affirmative action officer at 800-262-0003.*





# Woodbury County Board of Supervisors

Courthouse • Room 104

620 Douglas Street • Sioux City, Iowa 51101

Telephone (712) 279-6525 • Fax (712) 279-6577

## MEMBERS

ROCKY L. DE WITT  
LAWTON

MARTY POTTEBAUM  
SIOUX CITY

KEITH W. RADIG  
SIOUX CITY

JEREMY J. TAYLOR  
SIOUX CITY

MATTHEW A. UNG  
SIOUX CITY

FINANCE / BUDGET DIRECTOR  
DENNIS BUTLER

ADMINISTRATIVE ASSISTANT  
KAREN JAMES

EXECUTIVE SECRETARY / PUBLIC BIDDER  
HEATHER SATTERWHITE

To: Woodbury County Board of Supervisors  
  
From: Dennis D. Butler, Finance/Operations Controller  
  
RE: FY 2020 Proposed Budget  
  
Date: December 28, 2018

This memo's purpose is to provide the Board of Supervisors an overall view of the proposed Woodbury County budget for FY 2020. As everybody knows, the economic environment is improving and the County's cash reserves are approaching the County's Financial Policies. These will be challenging times as there are new factors involved in getting to the end result of a balanced budget. The County will get through this this without major disruptions in services provided to the citizens of Woodbury County.

Included in this memo are schedules that summarize the total budget by fund, total tax asking's as they stand in the proposed budget, the tax funds that are out of balance and the County's accrued cash reserves. As the Board of Supervisors review this memo I will explain each category.

The total Proposed FY 20 budget is compared to the current FY 19 budget. **Please remember that FY 20 is only proposed at this point.** It includes three Improvement Requests that total \$ 493,628.

<u>Fund</u>	<u>FY 19 Appropriations</u>	<u>FY 20 Appropriations</u>	<u>Difference</u>
General Basic	27,755,996	28,969,856	1,213,860
General Supplemental	6,032,726	6,168,297	135,571
County Services (Mental Health)	2,340,330	3,123,060	782,730
Debt Service	2,276,507	1,519,374	(757,133)
Rural Basic	1,761,690	1,743,339	(18,351)
Other Funds - Non Tax	<u>14,464,429</u>	<u>15,341,126</u>	<u>876,697</u>
Total	54,631,678	56,865,052	2,233,374

The County has five funds that levy taxes. They are General Basic, General Supplemental, County Services, Debt Service and Rural Basic. In the following schedules I will show the budget short falls of revenue to expenditures, amount of new taxes without raising the tax rate and highlights by tax fund.

First, I will present the status of revenue to expenditures by tax fund. **It must be remembered that this is our starting point in balancing the budget.** The county will have new availability of revenues from a slight increase in TIF releases from all TIF Projects in Woodbury County, new construction, change in rollbacks and CF valuations coming on-line. This availability may be used to balance the County budgets. Also the county has two other options: find additional sources of revenues or decrease expenses.

<u>Fund</u>	<u>Expenditures Over Revenues</u>
General Basic Fund	1,888,852
General Supplemental Fund	283,125
County Services (Region contribution)	739,730
Debt Service	(811,343)
Rural Basic (Township)	340,429
Total	<u>2,440,793</u>

The following will show what the potential tax asking's would be **if we keep the FY 20 tax rates the same** as the FY 19 tax rates. The total increase in taxable valuations amounted to \$ 104,468,722 county wide and an increase of \$ 42,808,476 of township purposes.

<u>Fund</u>	<u>FY 18 Tax Rate</u>	<u>Additional Taxes</u>
General Basic Fund	3.69591	\$ 386,107
General Supplemental Fund	2.65730	277,604
County Services ( Sioux Rivers Region)	.53132	39,401
Debt Service	.37716	39,401
Rural Basic (Township)	2.24345	234,370

Again, the new revenues are coming from an slight increase in TIF releases, change in rollbacks, new construction and CF Valuations coming on line..

After reviewing the overall summary, I will now highlight by major fund revenues and expenditures.

Here are the highlights of changes in the General Basic Fund:

Revenues:

1. The transfers-in for employee benefits is up \$ 75,014 because of an increase in FY 20 benefits.
2. Tax revenues will increase in this fund as the county must maintain a \$3.50 tax rate which is is maximum allowed by law. The maximum rate has been exceeded according to state law through the use of a additional public hearing. Currently, the County is at \$3.69591. To use the General Supplemental Fund, the maximum General Basic levy has to be \$3.50 or higher.

3. Federal prisoner & billing of prisoners is down \$140,000.
4. Interest and received by County Treasurer increased \$130,000.

Expenditures:

1. In the Sheriff's Divisions there is a overall increase of \$882,884 which includes two improvement requests for \$320,717.
2. The conservation divisions have a overall increase of \$322,192. Improvement requests are included in the overall increase in the amount of \$153,072.
3. There is a zero % increase for the county share of health insurance costs. The past two budgeted FY's there have been health insurance increases.

Here are the highlights of changes in the General Supplemental Fund:

Revenues:

1. Revenue generated for juvenile care has decreased by \$150,000 because of fewer out of county juveniles housed at the Detention Facility.
2. Increase in tax revenues of \$283,125.

Expenditures:

1. In Courthouse Security there is a request of \$41,214 in wages.
2. There is a zero % increase for the county share of health insurance costs. The past two budgeted FY's there have been health insurance increases.
3. In 2018 there will be a General Election that will cost the taxpayer \$186,175.

The Rural Basic Fund tax asking for FY 20 is up by \$ 340,429 due to the increase in in taxable valuation and the minimum levy requirement for Secondary roads which is an additional \$350,000.

The Debt Service Fund is projected to have a tax asking decrease of \$811,343. This is the result of borrowing new debt for our FY 19 CIP projects and also paying off a Capital Loan note for the FY 16 Capital Loan projects. This Capital Loan note will be paid off two years early. The County will have used 2.31% of our debt limit which is 5% of the County's Assessed Valuation or \$350,292,393.

The County Services (M.H.) Fund tax asking will be increased by \$739,730 for FY 2020. This number will fluctuate as Woodbury County will be moving to Rolling Hills Region and receive a distribution of funds balances that will reduce the levy by Woodbury County.

When all is said and done, the Board of Supervisors will have to make some difficult decisions to balance the budget. There will have to be potential expenditure reductions, use the same total tax rate to generate new revenues and there will have to be a hard look at creating new revenues through the cooperation of all Elected Officials and Department Heads.

The Board of Supervisors will fulfill the responsibility of balancing the budget with the taxpayers in mind, in order to provide the functions and services to the citizens of Woodbury County through the most cost effective and efficient way possible.

FY 2020 should be a great year, as there will be economic growth, tax base increases and creation of jobs.

I will be available for any questions that you may have.

# *The Running Total: Current Tax Rates for FY 19*

Certified budget March 15, 2018

Woodbury County: County-Wide  
\$7.26 / \$1,000

-\$0.15

Woodbury County: Rural Unincorporated  
\$9.51 / \$1,000

-\$0.86

# *The Running Total: Current Tax Rates for FY 20*

Proposed January 1, 2019 Tax Rates\*

Woodbury County: County-Wide  
\$7.57 / \$1,000

+\$0.31

Woodbury County: Rural Unincorporated  
\$10.00 / \$1,000

+\$0.49

*\*Total department budget requests including improvement items*

**General Basic Fund Recap of Proposed FY 20**

**Revenues:**

Transfers in - General Supplemental & Sec. Rd.		(139,986)
Overtime Reimbursements		(18,054)
Sheriff:		
Jail Facility Revenues		(165,000)
Administration Fees		(16,000)
Highway Safety Grant		(3,754)
County Attorney:		
HIDTA Grant	7,891	
Edward Byrne Grant	548	
Collections	2,984	
HIDTA Grant	(12,218)	
Domestic Violence Grant	<u>44,114</u>	43,319
Medical Examiner		(1,000)
DHS Sdministration Reimbursement		(66,500)
Veteran Affairs - IDVA Grant		425
Gas Tax Refund		(4,500)
Conservation:		
Conservation Advertising		(1,000)
Rents		(1,500)
Treasurer - Motor Vehicle Fees		(2,000)
Supervisors - Farm Rent		(6,312)
Auditor's Office Miscellaneous Fees		14,848
Treasurers Office:		
Interest Idle Fund Investment	130,000	
Peanalty and Interes Taxes	(10,500)	
Other County Taxes	<u>(33,000)</u>	86,500
Taxes		<u>1,888,852</u>
Revenue Increase/Decrease		<u><u>1,608,338</u></u>

**Disbursements:**

Transfers out - Emergency Paramedics		6,660
Refunds & Rebates		(9,662)
Sheriff:		
*Uniform Patrol	492,950	
Investigations	(206,662)	
Overtime Reimbursements	(1,508)	
**Correctional Facility - LEC	520,098	
Administration	55,901	
Civil Division	(10,020)	
Highway Safety	8,180	
Crime Prevention	<u>23,945</u>	882,884

County Attorney:

Administration	(7,299)	
HIDTA Grant #1	8,216	
Edward Byrne Grant	8,158	
Juvenile Attorneys	100,853	
Collections	24,423	
HIDTA Grant #2	(11,893)	
Domestic Violence Grant	<u>44,114</u>	166,572
Medical Examiner		24,000
District Health Allotment		75,135
DHS Administration - State		10,476

Veteran Affairs:

Administration	15,588	
IDVA Grant	<u>425</u>	16,013

Conservation:

Administration	33,322	
*** Parks	183,183	
Naturalist	20,919	
Nature Center	<u>1,200</u>	238,624

Treasurer:

Motor Vehicle	20,676	
Tax Collections	<u>19,084</u>	39,760

Auditor:

Recorder	14,904	
Auditor	<u>6,080</u>	20,984

Board of Supervisors Expense		11,918
Board Administration		27,871
Human Resources		25,478
Civil Service		816

Building Services:

Courthouse	35,921	
LEC	(80,090)	
Trosper/Hoyt	14,506	
Praire Hills Facility	(6,558)	
District Health	(2,800)	
Building Services	(34,573)	
Tri-View Facility	<u>1,295</u>	(72,299)

WCICC		114,257
Comm. Center		<u>28,851</u>

Disbursements - Increase/(Decrease) 1,608,338

**Improvement requests included above:**

* Uniform Patrol	254,229
** Correctional Facility - LEC	66,488
*** Conservation Parks	153,072

**General Supplemental Fund Recap of Proposed FY 20**

**Revenues:**

Emergency Services		5,000	
District Court - Telephone		(3,000)	
Juvenile Detention Revenue:			
GPS Bracelets	(600)		
School Lunch Program	(2,000)		
Juvenile Care	<u>(150,000)</u>	(152,600)	
Auditor			
Miscellaneous	500		
School Elections	24,485		
City Primary Elections	23,305		
City General Elections	<u>29,770</u>	78,060	
Taxes		<u>283,125</u>	
Revenue - Increase/(Decrease)			<u><u>210,585</u></u>

**Disbursements:**

Transfers out - General Basic		75,014	
Emergency Services*		105,845	
Emergency Management		3,339	
Starcom		1,841	
District Court Operations		(1,950)	
Sheriff - Court Security		(16,977)	
Sheriff - Courthouse Security		50,047	
Court Appointed Attornys		40,000	
Juvenile Detention		(20,978)	
Auditor:			
Administration		7,529	
General Primary		75,490	
General Election		(186,175)	
School Elections		24,485	
City Primary Election		23,305	
City General Election		<u>29,770</u>	
Disbursements - Increase/(decrease)			<u><u>210,585</u></u>

**Improvement requests included above:**

* Emergency Services	19,839
----------------------	--------



Rural Basic Fund Recap of Proposed FY 20

**Revenues:**

Transfers -In		(2,713)
Other Taxes		(696)
Taxes		<u>340,429</u>

Revenue - Increase/Decrease) 337,020

**Disbursements:**

Transfers - Out			
Secondary Roads	350,000		
County Library	(1,286)		
1/2 of Emergency Paramedics	<u>6,660</u>	355,374	
Tax Rebate - CF		(1,919)	
Sheriff:			
Uniform Patrol		(28,182)	
Roadside Management		5,373	
Sanitary Landfill		6,198	
Soil Conservation		3,000	
Community/Economic Development		(3,824)	
Township Officers		<u>1,000</u>	

Disbursements - Increase/(Decrease) 337,020

**BYLAWS  
OF  
THE WOODBURY COUNTY BOARD OF SUPERVISORS**

**ARTICLE I  
Name**

The name of this statutorily created assembly is the Woodbury County Board of Supervisors.

**ARTICLE II  
Purpose**

The purpose of this assembly is to perform the duties of the Board of Supervisors according to the Iowa Code.

**ARTICLE III  
Members**

There are five members of the Woodbury County Board of Supervisors. They are elected at large from Woodbury County, Iowa but with equal-population district residence requirements.

**ARTICLE IV  
Officers**

**Section 1. Officers and Duties.** The officers shall be a Chairperson, a Vice Chairperson and a Clerk to the Board. These officers shall perform the duties as prescribed by Iowa Code, these bylaws and by the parliamentary authority adopted by the Board in descending order.

- a. Chairperson.** The Chairperson shall preside at all the meetings of the Board during the year. The Chairperson shall make all committee assignments to committees recognized in these bylaws. The Chairperson shall set the tentative agenda for all meetings of the Board. The Chairperson shall oversee the daily operations of county administration while acting within the policies established by the Board. Subject to approval of the Board, the Chairperson shall be authorized, with a Board approved committee form, to establish special purpose committees as needed.
- b. Vice Chairperson.** The Vice Chairperson shall serve during the absence of the Chairperson and be the presiding officer when the Chairperson participates by electronic means.
- c. Clerk to the Board.** The Auditor and Recorder or the designee of the Auditor and Recorder shall serve as Clerk to the Board *ex officio*. The Clerk to the Board shall be recognized as the parliamentarian for all meetings of the Board.

**Section 2. Time, Nomination Procedure, Method of Election and Term of Office.** The election of The Chairperson and Vice Chairperson shall occur at the first meeting in each year. Nominations shall be made from the floor and elections shall be by roll call vote. A temporary chair shall be elected to preside over the election of the Chairperson. The Chairperson's term shall begin immediately. The Chairperson shall preside over the election of the Vice Chairperson.

## **ARTICLE V Meetings**

**Section 1. Compliance with Open Meetings Law.** All meetings of the Board shall be scheduled and conducted in compliance with Chapter 21 of the Code of Iowa and other applicable law.

**Section 2. First Meeting.** The Board shall meet on the first day of January which is not a Saturday, Sunday or holiday.

**Section 3. Regular Meetings.** The Board shall hold regular meetings on each Tuesday of the year unless canceled or postponed by a majority of the Board.

**Section 4. Special Meetings.** The Board may hold special meetings from time to time as required to conduct the business of the county. A special meeting may be called by the Chairperson or by the Vice Chairperson in the absence of the Chairperson.

**Section 5. Agenda.** Items to be considered for a meeting shall be submitted in a format prescribed by the Board. All items requested for Board action shall be submitted in the form of a proposed written motion. Any member of the Board may direct the Chairperson to place an information or discussion item on the agenda of a subsequent meeting. The Chairperson shall place an action item on the agenda of a subsequent meeting when directed by a majority of the Board. The chairperson may place items of routine business on a consent agenda to be considered in gross by the Board without debate or amendment. A member may, at the time of approval of the agenda, ask for an item to be considered as a separate item.

**Section 6. Quorum and Consensus.** A quorum and consensus shall consist of three members of the Board. A quorum is required to transact the official business of the County.

**Section 7. Majority Required.** Unless where otherwise provided by law, a majority of the quorum present is required for the adoption of any matter to come before the Board.

**Section 8. Manner of Acting.** Any question to come before the Board shall be in the form of a motion made by a member and shall require a second for consideration. Remarks by members shall be limited to ten minutes unless an extension is granted by a majority of the Board. A member or any other elected official of the county shall address the Chairperson and confine their remarks to the question before the Board and shall be respectful of other elected officials and avoid referencing or questioning the motives of another elected official.

**Section 9. Roll Call Votes.** The Chairperson shall order a roll call vote when requested by a member. The roll shall be called alphabetically except the Chairperson shall be called last. If a member is not ready to vote, the member may pass and shall be called upon again after the roll has been completely called and shall vote or abstain.

**Section 10. Effect of Abstention.** When a member abstains due to a conflict of interest, the vote of the Board shall be computed on the basis of the number of members not disqualified by reason of conflict of interest. However, at least three (3) members eligible to vote are required for a quorum on any matter. Abstentions that are not due to a conflict of interest shall be counted as a “no” vote.

**Section 11. Electronic Participation.** A member of the Board may participate in a meeting by electronic means only in circumstances where participation in person is impossible or impractical. Any member participating electronically shall be connected by a speaker phone, video conference, or other device or software, so that the public can hear any discussion by that member. The vote of any member participating electronically must be made public at the meeting and the minutes of the meeting shall include sufficient information to indicate the vote of each member participating.

## **ARTICLE VI Committees**

**Section 1. Committees Required by Iowa Code.** All Board representation on committees required by the Iowa Code shall be appointed by the Chairperson subject to approval of the Board.

**Section 2. Committees Created by the provisions of Iowa Code Chapter 28E.** All Board representation on committees required by 28E agreements shall be appointed by the Chairperson subject to approval of the Board and the requirements of the 28E agreement.

**Section 3. Committees Created by Agreement.** All Board representation on committees required by agreement shall be appointed by the Chairperson subject to approval of the Board.

**Section 4. Committees Created for Special Purpose.** All Board representation on committees required for a special purpose shall be appointed by the Chairperson subject to approval of the Board.

**Section 5. Attendance at Committees Created Under Article VI.** Attendance by members of the Board at committees created under Article VI of these bylaws shall be limited to those approved by the Board as committee representatives unless the committee meeting has also been posted as a special meeting of the Board of Supervisors.

## **ARTICLE VII Conflicts of Interest**

Except as otherwise provided by law, members shall not have an interest, direct or indirect, in any contract, or job of work, or material, or the profits thereof, or services to be furnished or performed for Woodbury County. Members should avoid any action that would result in, or create the impression of, using public office for private gain, giving preferential treatment to any person, or losing impartiality in conducting county business.

**ARTICLE VIII**  
**Parliamentary Authority**

The rules contained in the most current edition of Robert's Rules of Order Newly Revised shall govern the Board in all cases to which they are applicable and in which they are not inconsistent with the Iowa Code, these bylaws and any special rules of order that the Board may adopt.

**ARTICLE IX**  
**Bylaws**

**Section 1. Adoption of Bylaws.** Bylaws shall be adopted at the first meeting in each year following a General Election.

**Section 2. Amendment of Bylaws.** These bylaws may be amended at any regular meeting of the Board with a majority vote, provided that the amendment has been submitted in writing at the previous regular meeting.

---

**DATE ADOPTED**

---

**CHAIRPERSON**

---

**ATTESTOR**

**DECEMBER 26, 2018, FIFTY-FIRST MEETING OF THE WOODBURY COUNTY BOARD OF SUPERVISORS**

The Board of Supervisors met on Wednesday, December 26, 2018 at 9:00 a.m. Board members present were Ung (by phone), De Witt, Radig, Taylor, and Pottebaum. Staff members present were Heather Satterwhite, Public Bidder, Board Administrative Assistant, Joshua Widman, Assistant County Attorney, Dennis Butler, Budget/Tax Analyst, and Patrick Gill, Auditor/Clerk to the Board.

The regular meeting was called to order with the Pledge of Allegiance to the Flag and a Moment of Silence.

1. There were no citizen concerns.
2. Motion by De Witt second by Taylor to approve the agenda for December 26, 2018. Carried 5-0. Copy filed.  
Motion by De Witt second by Radig to approve the following items by consent:
  3. To approve minutes of the December 18, 2018 meeting. Copy filed.
  4. To approve the claims totaling \$451,977.29. Copy filed.
  5. To approve the appointment of Jana Nash, Civilian Jailer, County Sheriff Dept., effective 12-27-18, \$19.28/hour. Job Vacancy Posted 11-14-18. Entry Level Salary: \$19.28/hour. Copy filed.

Carried 5-0.

6. The Board heard reports on committee meetings.
7. Citizen concerns.
8. Dennis Butler discussed budget process.

The Board adjourned the regular meeting until January 2, 2018.

Meeting sign in sheet. Copy filed.

# The Sergeant Bluff Advocate

---

Pioneer Mall  
204 First St., Suite 2A  
Sergeant Bluff, IA 51054-0712  
(FAX) 712-943-4606 (Ph:)712-943-2583  
advocate@longlines.com

Oct. 15, 2018

Woodbury County Board of Supervisors  
ATTN: Board Administrative Coordinator  
Courthouse, Room 104  
620 Douglas Street  
Sioux City, IA, 51101

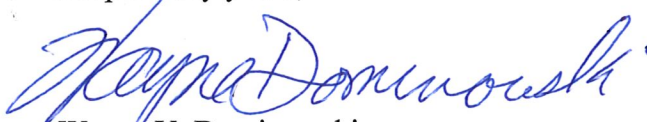
OCT 23 2018 PM 12:30

Dear Woodbury County Board of Supervisors:

Please find attached our Statement of Ownership, Management and Circulation (SOMC), published in the OCT. 4, 2018 issue of the Sergeant Bluff Advocate weekly newspaper. The SOMC published notification details our publishing information and numbers. This is in accordance with requirements for the annual status consideration of Official Woodbury County Newspaper of which we are applying.

Thank you for permitting the Sergeant Bluff Advocate to serve the Woodbury County Board of Supervisors as an Official Woodbury County Newspaper and the people of Sergeant Bluff, Salix, Sloan, Hornick, Climbing Hill, Sioux City and elsewhere in Woodbury County.

Respectfully yours,



Wayne V. Dominowski  
Publisher/Editor  
Lt.Col., USAR, (Ret.)

---

Box 546 • 238 Main Street  
Moyile, Iowa 51039  
Phone: 712-873-3141 • 844-873-3141

---

Your Regional Newspaper Serving Your Friends And Neighbors In  
Moyile - Kingsley - Lawton - Correctionville - Anthon - Pierson  
Bronson - Quimby - Washta - Hornick - Cushing - Oto - Climbing Hill

December 4, 2018

Woodbury County Board of Supervisors  
6th & Douglas St  
Room 104  
Sioux City, IA 51101

Dear Sirs:

Please accept this letter as our 2019 request to be an official newspaper for Woodbury County, Iowa. Thank you for your consideration in this matter. We look forward to serving you in the coming year.

Sincerely,



Blake Stubbs  
Publisher/Editor



SIoux CITY  
**JOURNAL**  
COMMUNICATIONS

December 10, 2018

Dear Woodbury County Board of Supervisors;

The Sioux City Journal would like to be considered the official county newspaper for Woodbury County.

Sincerely,



Sue Stusse, Controller

Sioux City Journal

*515 Pavonia St. • P.O. Box 118 • Sioux City, Iowa 51102*

Advertising: (712) 293-4325 Fax: (712) 279-5099 • Business Office: (712) 293-4294 • Circulation: (712) 293-4200

Classifieds: (712) 293-4300 • Editorials: (712) 293-4217 Fax: (712) 279-5059

Website: [www.siouxcityjournal.com](http://www.siouxcityjournal.com) • Email: [scj@siouxcityjournal.com](mailto:scj@siouxcityjournal.com)



# DEPARTMENT OF CORRECTIONAL SERVICES

---

---

December 7, 2018

TO: Chair, County Board of Supervisors

From: Jody Hagaman *JMH*  
Board of Director's Secretary

Subject: Membership Notices

Enclosed herein please find a Notice of Appointment for calendar year 2019 to be completed in order to appoint representation from your county to our Board of Directors.

Thank you for your assistance in returning this to me by mid-January 2019. Also, if your representative is a first-time appointment, please include the member's physical address, email address and phone number.

If you have any questions, feel free to contact me at 712-224-6821.

---

---

515 Water Street  
Sioux City, Iowa 51103  
(712) 252-0590  
RTF: 252-3451  
FAX: 252-0634

Suite One  
100 West 5<sup>th</sup> St.  
Spencer, Iowa 51301  
(712) 262-5252  
FAX: 262-5391

720 Western Avenue  
P.O. Box 39  
Sheldon, Iowa 51201  
(712) 324-5384  
FAX: 324-5366

# NOTICE OF APPOINTMENT

PURSUANT to Section 905.3(1)(a), Code of Iowa,

The Board of Supervisors

of \_\_\_\_\_ County

hereby appoint

\_\_\_\_\_

to serve on the Board of Directors of the

**THIRD JUDICIAL DISTRICT  
DEPARTMENT OF CORRECTIONAL SERVICES**

for the calendar year 2019.

Dated this \_\_\_\_ day of \_\_\_\_\_, \_\_\_\_\_.

\_\_\_\_\_  
Board Chairperson

\_\_\_\_\_ County



WOODBURY COUNTY, IOWA  
BOARD ADMINISTRATION

MEMORANDUM

TO: Board of Supervisors  
FROM: Karen James, Board Administrative Assistant  
RE: Responses from Members of Boards/Commissions on Consideration of a Reappointment  
DATE: December 20, 2018

Below are the responses of all the members of the various Boards/Commissions.

CONSERVATION BOARD

YES Cindy Bennet, 2501 Apache Dr., Sioux City, IA 51104

SIouxLAND DISTRICT BOARD OF HEALTH

YES Rod Earleywine, 1019 Coffie Farm Rd., Sergeant bluff, IA 51054  
James O'Kane, 2505 W. 15<sup>th</sup> St. Place, Sioux City, IA 51103 No Response

COMMISSION TO ASSESS DAMAGES

**Category A - Owner/operators of Agricultural Property:**

YES Leo Jochum 1691 – 250<sup>TH</sup>, Salix, IA 51052  
YES Thomas Ullrich, 819 Brown Street, Sloan, Iowa 51055  
Debbie DeForrest, 1861 Buchanan Ave., Sioux City, Iowa 51106 No Response

**Category B - Owners of City Property:**

YES Bob Batcheller, PO Box 3311, Sioux City, IA 51102  
YES Ruth A. Groth, 305 North Cauley Ave, Anthon, IA 51004  
YES Kathleen F. Fenceroy, 323 Oakland, Sioux City, Iowa 51103 No Response

**Category C - Licensed Real Estate Salesman or Real Estate Broker:**

YES Colleen R. Baker, 3422 Jackson Street, Sioux City, Iowa 51104  
YES Anita Small, 4629 – 46<sup>th</sup> Street, Sioux City, IA 51108  
YES Nancy Henry CRS, P.O. Box 2484, Sioux City, IA 51102  
YES Tori Jackson, 103 Virginia St., Suite 100, Sioux City, IA 51101

**Category D - Persons Having Knowledge of Property Values in the County by Reason of their Occupation:**

- YES** Patrick Curry, 502 Huntington Court., Sergeant Bluff, Iowa 51054  
**YES** Linda Mathison, 5008 Ravine Park Lane, Sioux City, IA 51106  
**YES** Doug Lehman, P. O. Box 1381, Sioux City, IA 51105

**In conclusion the Board needs appointments for:**

Commission to Assess Damages

- ❖ Category A – Five persons
- ❖ Category B – Five persons
- ❖ Category C - Three persons
- ❖ Category D – Four persons

**WOODBURY COUNTY BOARD OF SUPERVISORS AGENDA ITEM(S) REQUEST FORM**

Date: 12/27/2018 Weekly Agenda Date: 01/02/2019

**ELECTED OFFICIAL / DEPARTMENT HEAD / CITIZEN:** Melissa Thomas

**WORDING FOR AGENDA ITEM:**

Approval for the Chairman to sign the property and casualty policies with One Beacon and Travelers Insurance for calendar year 2019

**ACTION REQUIRED:**

- Approve Ordinance
- Approve Resolution
- Approve Motion
- Public Hearing
- Other: Informational
- Attachments

**EXECUTIVE SUMMARY:**

The paper work for the renewal of Woodbury County's property and casualty insurance is being submitted. The paperwork lays out the exact limits and premiums for the 2019 calendar year.

**BACKGROUND:**

Renewal for the property and casualty is an annual event (January 1)

**FINANCIAL IMPACT:**

General Liability, \$31,846.00, Professional Liability, \$52,852.00, Auto Liability, \$39,798.00 and excess (umbrella liability) \$96,302.00, TRIA, \$1918.0 with One Beacon.  
Property and Equipment, \$129,223.00, Crime, \$5706.00. with Travelers.

**IF THERE IS A CONTRACT INVOLVED IN THE AGENDA ITEM, HAS THE CONTRACT BEEN SUBMITTED AT LEAST ONE WEEK PRIOR AND ANSWERED WITH A REVIEW BY THE COUNTY ATTORNEY'S OFFICE?**

Yes  No

**RECOMMENDATION:**

Please accept the renewal paperwork and provide the necessary signature.

**ACTION REQUIRED / PROPOSED MOTION:**

Accept and sign the 2019 Property and Casualty renewal.

## IOWA SELECTION OF UNINSURED MOTORISTS COVERAGE AND UNDERINSURED MOTORISTS COVERAGE LIMITS

<b>Applicant/Named Insured:</b> WOODBURY COUNTY 620 DOUGLAS, RM 701 SIOUX CITY, IA 51101	<b>Producer:</b> ARTHUR J. GALLAGHER RISK MANAGEMENT SERVICES, INC. 2850 GOLF ROAD ROLLING MEADOWS, IL 60008
<b>Policy Effective Date:</b> 01/01/2019	<b>Policy Number:</b> 791000626-0006

Iowa law permits you to make certain decisions regarding Uninsured Motorists Coverage and Underinsured Motorists Coverage. This document briefly describes these coverages and the options available.

You should read this document carefully and contact your agent if you have any questions regarding Uninsured Motorists Coverage or Underinsured Motorists Coverage and your options with respect to these coverages.

This document includes general descriptions of coverage. However, no coverage is provided by this document. You should read your policy and review your Declaration Page(s) and/or Schedule(s) for complete information on the coverages you are provided.

Uninsured Motorists Coverage provides insurance protection to an insured for compensatory damages which the insured is legally entitled to recover from the owner or operator of an uninsured motor vehicle because of bodily injury caused by an automobile accident. Also included are damages due to the bodily injury that result from an automobile accident with a hit-and-run vehicle whose owner or operator cannot be identified.

Underinsured Motorists Coverage provides insurance protection to an insured for compensatory damages which the insured is legally entitled to recover from the owner or operator of an underinsured motor vehicle because of bodily injury caused by an automobile accident.

Unless rejected, the Uninsured Motorists Coverage and Underinsured Motorists Coverage contained in your policy will be afforded at a limit at least equal to a combined single limit of \$40,000 for each accident. If you elect both Uninsured Motorists Coverage and Underinsured Motorists Coverage, both coverages must be provided at the same limit.

Please complete Sections A. and B. below.

**A. Selection Of Uninsured Motorists Coverage Limit**

Please indicate your choice by initialing next to the appropriate item and by signing below.

<b>(Initials)</b> _____ I have already rejected all Uninsured Motorists coverage in connection with my policy.			
I select the following limit for Uninsured Motorists Coverage. (The limit selected cannot exceed the Liability limit of you policy.)			
<b>(Choose one):</b>			
<b>(Initials)</b> _____	<b>Combined Single Limit</b> \$ 40,000	<b>(Initials)</b> _____	<b>Combined Single Limit</b> \$ 350,000
_____	\$ 50,000	_____	\$ 500,000
_____	\$ 100,000	_____	\$ 1,000,000 ✗
_____	\$ 250,000		
_____ <b>Applicant's/Named Insured's Signature</b>		_____ <b>Date</b>	

**B. Selection Of Underinsured Motorists Coverage Limit**

Please indicate your choice by initialing next to the appropriate item and signing below.

<b>(Initials)</b> _____ I have already rejected all Underinsured Motorists coverage in connection with my policy.			
I select the following limit for Underinsured Motorists Coverage. (The limit selected cannot exceed the Liability limit of you policy.)			
<b>(Choose one):</b>			
<b>(Initials)</b> _____	<b>Combined Single Limit</b> \$ 40,000	<b>(Initials)</b> _____	<b>Combined Single Limit</b> \$ 350,000
_____	\$ 50,000	_____	\$ 500,000
_____	\$ 100,000	_____	\$ 1,000,000 ✗
_____	\$ 250,000		
_____ <b>Applicant's/Named Insured's Signature</b>		_____ <b>Date</b>	



## IOWA UNINSURED MOTORISTS COVERAGE AND UNDERINSURED MOTORISTS COVERAGE REJECTION

<b>Applicant/Named Insured:</b> WOODBURY COUNTY 620 DOUGLAS, RM 701 SIOUX CITY, IA 51101	<b>Producer:</b> ARTHUR J. GALLAGHER RISK MANAGEMENT SERVICES, INC. 2850 GOLF ROAD ROLLING MEADOWS, IL 60008
<b>Policy Effective Date:</b> 01/01/2019	<b>Policy Number:</b> 791000626-0006

Iowa law permits you to make certain decisions regarding Uninsured Motorists Coverage and Underinsured Motorists Coverage. This document briefly describes these coverages.

Uninsured Motorists Coverage provides insurance protection to an insured for compensatory damages which the insured is legally entitled to recover from the owner or operator of an uninsured motor vehicle because of bodily injury caused by an automobile accident. Also included are damages due to the bodily injury that result from an automobile accident with a hit-and-run vehicle whose owner or operator cannot be identified.

Underinsured Motorists Coverage provides insurance protection to an insured for compensatory damages which the insured is legally entitled to recover from the owner or operator of an underinsured motor vehicle because of bodily injury caused by an auto accident.

Iowa Law requires that all automobile liability policies contain both Uninsured Motorists Coverage and Underinsured Motorists Coverages, unless you reject either or both coverages.

You should read this document carefully and contact your agent if you have any questions regarding Uninsured or Underinsured Motorists Coverage and your options with respect to these coverages.

If you wish to reject either or both of these coverages, you may do so by initialing and signing below.

If more than one named insured is shown on the Declaration Page(s), each named insured must separately reject Uninsured Motorists Coverage and/or Underinsured Motorists Coverage by initialing next to the item and signing below.

**A. Rejection Of Uninsured Motorists Coverage**

(Initials)	_____ I reject Uninsured Motorists Coverage.
_____ <b>Applicant's/Named Insured's Signature</b>	_____ <b>Date</b>

(Initials)	_____ I reject Uninsured Motorists Coverage.
_____ <b>Applicant's/Named Insured's Signature</b>	_____ <b>Date</b>

(Initials)	_____	
	I reject Uninsured Motorists Coverage.	
	_____	_____
	Applicant's/Named Insured's Signature	Date

**B. Rejection Of Underinsured Motorists Coverage**

(Initials)	_____	
	I reject Underinsured Motorists Coverage.	
	_____	_____
	Applicant's/Named Insured's Signature	Date

(Initials)	_____	
	I reject Underinsured Motorists Coverage.	
	_____	_____
	Applicant's/Named Insured's Signature	Date

(Initials)	_____	
	I reject Underinsured Motorists Coverage.	
	_____	_____
	Applicant's/Named Insured's Signature	Date



Atlantic Specialty Insurance Company  
150 Royall Street  
Canton, MA 02021

Insured Name and Address:  
WOODBURY COUNTY  
620 DOUGLAS, RM 701  
SIOUX CITY, IA 51101

Quote Number: 2234279-2

## POLICYHOLDER DISCLOSURE NOTICE OF TERRORISM INSURANCE COVERAGE

You are hereby notified that under the Terrorism Risk Insurance Act (the Act), as amended, you have a right to purchase insurance coverage for losses resulting from acts of terrorism, as defined in Section 102(1) of the Act: The term "act of terrorism" means any act or acts that are certified by the Secretary of the Treasury, in consultation with the Secretary of Homeland Security, and the Attorney General of the United States - to be an act of terrorism; to be a violent act or an act that is dangerous to human life, property, or infrastructure; to have resulted in damage within the United States, or outside the United States in the case of an air carrier or vessel or the premises of a United States mission; and to have been committed by an individual or individuals as part of an effort to coerce the civilian population of the United States or to influence the policy or affect the conduct of the United States Government by coercion.

YOU SHOULD KNOW THAT WHERE COVERAGE IS PROVIDED BY THIS POLICY FOR LOSSES RESULTING FROM CERTIFIED ACTS OF TERRORISM, SUCH LOSSES MAY BE PARTIALLY REIMBURSED BY THE UNITED STATES GOVERNMENT UNDER A FORMULA ESTABLISHED BY FEDERAL LAW. HOWEVER, YOUR POLICY MAY CONTAIN OTHER EXCLUSIONS WHICH MIGHT AFFECT YOUR COVERAGE, SUCH AS AN EXCLUSION FOR NUCLEAR EVENTS. UNDER THE FORMULA, THE UNITED STATES GOVERNMENT GENERALLY REIMBURSES 85% THROUGH 2015; 84% BEGINNING ON JANUARY 1, 2016; 83% BEGINNING ON JANUARY 1, 2017; 82% BEGINNING ON JANUARY 1, 2018; 81% BEGINNING ON JANUARY 1, 2019 AND 80% BEGINNING ON JANUARY 1, 2020, OF COVERED TERRORISM LOSSES EXCEEDING THE STATUTORILY ESTABLISHED DEDUCTIBLE PAID BY THE INSURANCE COMPANY PROVIDING THE COVERAGE. THE PREMIUM TO BE CHARGED FOR THIS COVERAGE IS PROVIDED BELOW AND DOES NOT INCLUDE ANY CHARGES FOR THE PORTION OF LOSS THAT MAY BE COVERED BY THE FEDERAL GOVERNMENT UNDER THE ACT.

YOU SHOULD ALSO KNOW THAT THE TERRORISM RISK INSURANCE ACT, AS AMENDED, CONTAINS A \$100 BILLION CAP THAT LIMITS U.S. GOVERNMENT REIMBURSEMENT AS WELL AS INSURERS' LIABILITY FOR LOSSES RESULTING FROM CERTIFIED ACTS OF TERRORISM WHEN THE AMOUNT OF SUCH LOSSES IN ANY ONE CALENDAR YEAR EXCEEDS \$100 BILLION. IF THE AGGREGATE INSURED LOSSES FOR ALL INSURERS EXCEED \$100 BILLION, YOUR COVERAGE MAY BE REDUCED.

### SELECTION OR REJECTION OF TERRORISM INSURANCE COVERAGE

The prospective premium required for your terrorism coverage is: \$ 1,918.

If you wish to reject this offer of coverage, you should check the box below, sign this notice and send it to your agent. An **exclusion** of terrorism losses, as defined by the Act, will then be made part of your policy.

<input type="checkbox"/>	I hereby reject the offer of terrorism coverage. I understand that I will have no coverage for losses arising from acts of terrorism, as defined in the act.
--------------------------	--

**If your policy includes Property Coverage in one or more of these states: CA, CT, GA, HI, IA, IL, MA, ME, MO, NC, NJ, NY, OR, RI, VA, WA, WI, or WV; the following statement applies:**

The terrorism exclusion makes an exception for (and thereby continues your coverage for) property fire losses resulting from an act of terrorism. Therefore, if you reject the offer of terrorism coverage, that rejection does not apply to fire losses resulting from an act of terrorism - the coverage in your policy for such fire losses will continue. If such a loss occurs, and is certified under the Act, the loss will be reimbursed by the United States Government under the formula detailed above.

The portion of your policy premium attributable to terrorism (fire only) coverage in all of the states listed above, in which your policy provides property coverage, is \$0. This amount is included in your policy premium and cannot be rejected.

**If your policy includes inland Marine Coverage in one or more of these states: CA, ME, MO, OR or WI, the following statement applies:**

The terrorism exclusion makes an exception for (and thereby continues your coverage for) direct property damage fire losses resulting from an act of terrorism. Therefore, if you reject the offer of terrorism coverage, that rejection does not apply to direct property damage fire losses resulting from an act of terrorism - the coverage in your policy for such fire losses will continue. If such a loss occurs, and is certified under the Act, the loss will be reimbursed by the United States under the formula detailed above.

In all of the states listed above in which your policy provides inland Marine Coverage, the portion of your inland Marine policy premium attributable to coverage for direct property damage from fire resulting from terrorism is \$0. This amount is included in your policy premium and cannot be rejected.

_____	Atlantic Specialty Insurance Company
Policyholder/Applicant's Signature	Insurance Company
_____	_____
Print Name	Date

If you have any questions about this notice, please contact your agent.

Bldg	Address 1	City	ST	Bldg value	Pers prop value	Bl & Extra exp value	TIV
1	620 DOUGLAS ST	SIoux CITY	IA	\$67,000,000	\$1,759,240	\$500,000	\$69,259,240
2	407 7TH ST	SIoux CITY	IA	\$31,500,000	\$1,809,296	\$500,000	\$33,809,296
3	1600 COUNTY HOME RD	SIoux CITY	IA	\$1,000,000	\$200,000		\$1,200,000
4	1600 COUNTY HOME RD	SIoux CITY	IA	\$9,662,540	\$937,300		\$10,599,840
5	1600 COUNTY HOME RD	SIoux CITY	IA	\$573,420	\$317,240		\$890,660
6	1600 COUNTY HOME RD	SIoux CITY	IA	\$52,500			\$52,500
7	1600 COUNTY HOME RD	SIoux CITY	IA	\$31,500	\$70,000		\$101,500
8	1600 COUNTY HOME RD	SIoux CITY	IA		\$38,000		\$38,000
11	121 DEER RUN TRAIL	CLIMBING HILL	IA	\$1,000,000	\$600,000		\$1,600,000
12	121 DEER RUN TRAIL	CLIMBING HILL	IA	\$117,600	\$300,000		\$417,600
13	825 MAIN STREET	MOVILLE	IA		\$15,450		\$15,450
14	221 MAIN STREET	DANBURY	IA		\$15,450		\$15,450
15	321 4TH STREET	PIERSON	IA		\$15,450		\$15,450
16	510 MAIN ST	HORNICK	IA		\$15,450		\$15,450
17	SOUTHWOOD, 1MI SW OF SMITHLA	SMITHLAND	IA	\$161,595			\$161,595
18	SOUTHWOOD, 1MI SW OF SMITHLA	SMITHLAND	IA	\$126,000	\$50,000		\$176,000
19	SOUTHWOOD, 1MI SW OF SMITHLA	SMITHLAND	IA	\$61,600			\$61,600
20	SOUTHWOOD, 1MI SW OF SMITHLA	SMITHLAND	IA	\$94,500			\$94,500
21	SNYDER BEND	SALIX	IA	\$149,040			\$149,040
22	SNYDER BEND	SALIX	IA	\$150,480			\$150,480
23	RR 2, SNYDER BEND	SALIX	IA	\$136,890	\$50,000		\$186,890
24	SNYDER BEND	SALIX	IA	\$82,200			\$82,200
25	SNYDER BEND PARK	SALIX	IA	\$49,820			\$49,820
26	FOWLER FOREST	SMITHLAND	IA	\$58,240			\$58,240
27	FOWLER FOREST	SMITHLAND	IA	\$100,800			\$100,800
28	BIGELOW PARK	SALIX	IA	\$168,480			\$168,480
29	BIGELOW PARK	SALIX	IA	\$220,320			\$220,320
30	BIGELOW PARK	SALIX	IA	\$635,000	\$50,000		\$685,000
31	BIGELOW PARK	SALIX	IA	\$217,600			\$217,600
32	BIGELOW PARK	SALIX	IA	\$215,040	\$50,000		\$265,040
34	LITTLE SIOUX PARK	CORRECTIONVILLE	IA	\$208,640	\$1,000		\$209,640
35	LITTLE SIOUX PARK	CORRECTIONVILLE	IA	\$226,800	\$50,000		\$276,800
36	LITTLE SIOUX PARK	CORRECTIONVILLE	IA	\$416,780			\$416,780
37	LITTLE SIOUX PARK	CORRECTIONVILLE	IA	\$44,800	\$2,000		\$46,800
38	LITTLE SIOUX PARK	CORRECTIONVILLE	IA	\$141,625			\$141,625
39	LITTLE SIOUX PARK	CORRECTIONVILLE	IA	\$61,050			\$61,050
40	LITTLE SIOUX PARK	CORRECTIONVILLE	IA	\$91,960			\$91,960
41	LITTLE SIOUX PARK	CORRECTIONVILLE	IA	\$140,250			\$140,250
42	HWY 20	LAWTON	IA	\$262,500	\$62,500		\$325,000
43	HWY 20	MOVILLE	IA	\$265,125	\$63,125		\$328,250
44	HWY 20	MOVILLE	IA	\$159,600	\$38,000		\$197,600
45	106 SUMMIT ST	PIERSON	IA	\$105,000	\$25,000		\$130,000
46	112 KNOTTY PINE	CORRECTIONVILLE	IA	\$315,000	\$75,000		\$390,000
47	112 KNOTTY PINE	CORRECTIONVILLE	IA	\$70,875	\$16,875		\$87,750
48	NW CORNER OF BRIDGE ST & MILL	ANTHON	IA	\$119,070	\$28,350		\$147,420
49	205 WASHINGTON ST	OTO	IA	\$301,875	\$71,875		\$373,750
50	NE CORNER OF HWY 31 & 290TH S	OTO	IA	\$255,150	\$60,750		\$315,900
51	NE CORNER OF HWY 31 & 290TH S	OTO	IA	\$10,080	\$2,400		\$12,480
52	NE CORNER OF HWY 31 & 290TH S	OTO	IA	\$10,080	\$2,400		\$12,480
53	SW CORNER OF 250TH & O'BRIEN	MILLERSBURG	IA	\$33,600	\$8,000		\$41,600
54	NE CORNER OF 1ST ST & THOMAS	DANBURY	IA	\$84,000	\$20,000		\$104,000
55	220 MAIN	HORNICK	IA	\$21,420	\$61,250		\$82,670
56	E SIDE OF K64, 1 BLOCK N OF	HORNICK	IA	\$37,800	\$9,000		\$46,800
57	75 DEER RUN TRAIL	CLIMBING HILL	IA	\$105,000	\$25,000		\$130,000
58	822 DOUGLAS ST	SIoux CITY	IA	\$10,500,000	\$1,069,291	\$500,000	\$12,069,291
59	4500 SIOUX RIVER RD	SIoux CITY	IA	\$2,479,400	\$800,000		\$3,279,400
60	1014 NEBRASKA STREET	SIoux CITY	IA	\$3,675,000	\$557,127	\$500,000	\$4,732,127
62	SOUTHWOOD, 1MI SW OF SMITHLA	SMITHLAND	IA	\$23,040	\$2,000		\$25,040
63	SNYDER BEND	SALIX	IA	\$23,040	\$2,000		\$25,040
64	2244 HWY 31S	ANTHON	IA	\$50,400	\$12,000		\$62,400
68	401 8TH STREET	SIoux CITY	IA	\$842,400		\$500,000	\$1,342,400
69	1211 TRI-VIEW AVENUE	SIoux CITY	IA	\$725,000	\$125,000		\$850,000
70	759 E FRONTAGE ROAD	MOVILLE	IA	\$456,000	\$100,000		\$556,000
73	2924 SNYDER BEND ROAD	SALIX	IA	\$102,000	\$10,000		\$112,000
74	2924 SNYDER BEND ROAD	SALIX	IA	\$102,000	\$10,000		\$112,000

64	2244 HWY 31S	ANTHON	IA	\$50,400	\$12,000		\$62,400
68	401 8TH STREET	SIOUX CITY	IA	\$842,400		\$500,000	\$1,342,400
69	1211 TRI-VIEW AVENUE	SIOUX CITY	IA	\$725,000	\$125,000		\$850,000
70	759 E FRONTAGE ROAD	MOVILLE	IA	\$456,000	\$100,000		\$556,000
73	2924 SNYDER BEND ROAD	SALIX	IA	\$102,000	\$10,000		\$112,000
74	2924 SNYDER BEND ROAD	SALIX	IA	\$102,000	\$10,000		\$112,000
75	2924 SNYDER BEND ROAD	SALIX	IA	\$102,000	\$10,000		\$112,000
76	2924 SNYDER BEND ROAD	SALIX	IA	\$102,000	\$10,000		\$112,000
77	2508 DALLAS AVENUE	SALIX	IA	\$240,000	\$15,000		\$255,000
79	1600 COUNTY HOME ROAD	SIOUX CITY	IA	\$500,000	\$100,000		\$600,000
				<b>\$136,975,525</b>	<b>\$9,737,819</b>	<b>\$2,500,000</b>	<b>\$149,213,344</b>

Signed: \_\_\_\_\_

Dated: \_\_\_\_\_

**RESOLUTION #**

**NOTICE OF PROPERTY SALE**

**Parcels #894729177013**

**WHEREAS** Woodbury County, Iowa was the owner under a tax deed of a certain parcel of real estate described as:

**Lot Four (4) in Block Fourteen (14), Tredway's Addition, City of Sioux City, Woodbury County, Iowa  
(423 Myrtle Street)**

**NOW THEREFORE,**

**BE IT RESOLVED** by the Board of Supervisors of Woodbury County, Iowa as follows:

1. That a public hearing on the aforesaid proposal shall be held on the **15<sup>th</sup> Day of January, 2019 at 4:35 o'clock p.m.** in the basement of the Woodbury County Courthouse.
2. That said Board proposes to sell the said parcel of real estate at a public auction to be held on the **15<sup>th</sup> Day of January, 2019**, immediately following the closing of the public hearing.
3. That said Board proposes to sell the said real estate to the highest bidder at or above a **total minimum bid of \$220.00** plus recording fees.
4. That this resolution, preceded by the caption "Notice of Property Sale" and except for this subparagraph 4 be published as notice of the aforesaid proposal, hearing and sale.

Dated this 2<sup>nd</sup> Day of January, 2019.

ATTEST:

WOODBURY COUNTY BOARD OF SUPERVISORS

---

Patrick F. Gill  
Woodbury County Auditor  
and Recorder

---

Chairman

REQUEST FOR MINIMUM BID

Name: Marrill Tomlinson Date: 9/21/17  
Address: 426 Isabella St. Phone: 712-212-3008  
712-259-0898

Address or approximate address/location of property interested in:  
423 Myrtle Street

GIS PIN # 894729177013

*\*This portion to be completed by Board Administration \**

Legal Description:  
Lot 4 Block 14, Tredways Addition,  
City of Sioux City, Woodbury County,  
Iowa

Tax Sale #/Date: 6120114 #828 Parcel # 512580

Tax Deeded to Woodbury County on: 12/11/18

Current Assessed Value: Land \$7,200 Building ∅ Total \$7,200

Approximate Delinquent Real Estate Taxes: \$512-

Approximate Delinquent Special Assessment Taxes: \$572-

\*Cost of Services: \$120-

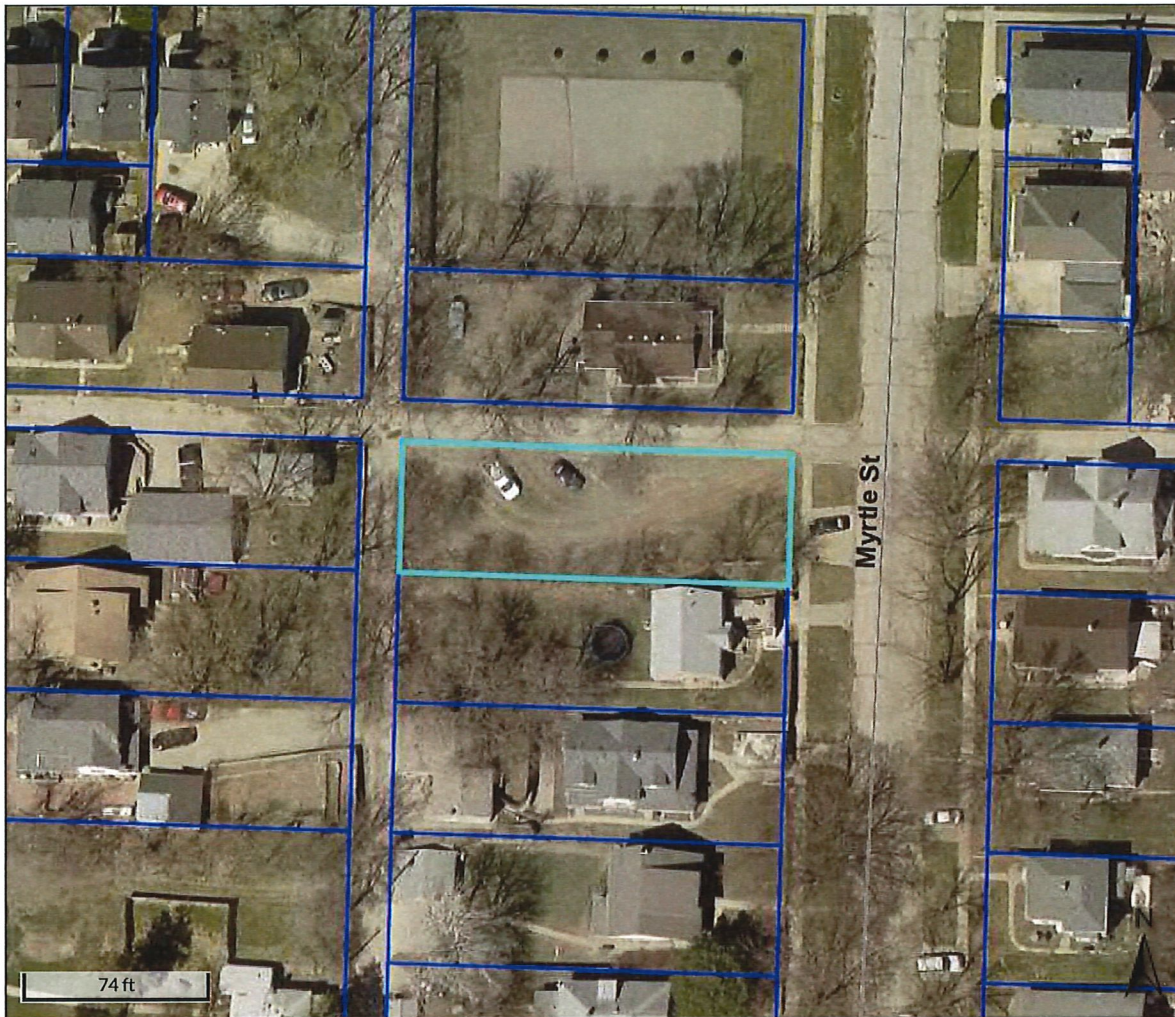
Inspection to: Matthew Ong Date: 9/21/17

Minimum Bid Set by Supervisor: \$100 plus \$120 for cost of services  
Total: \$220

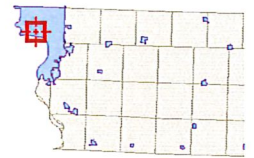
Date and Time Set for Auction: \_\_\_\_\_

\* Includes: Abstractors costs; Sheriff's costs; publishing costs; and mailing costs.





Overview



Legend

-  Roads
-  Corp Boundaries
-  Townships
-  Parcels

Parcel ID	894729177013	Alternate ID	512580	Owner Address	WOODBURY COUNTY
Sec/Twp/Rng	n/a	Class	R		620 DOUGLAS ST
Property Address	423 MYRTLE ST	Acreage	n/a		SIOUX CITY IA 51101
	SIOUX CITY				

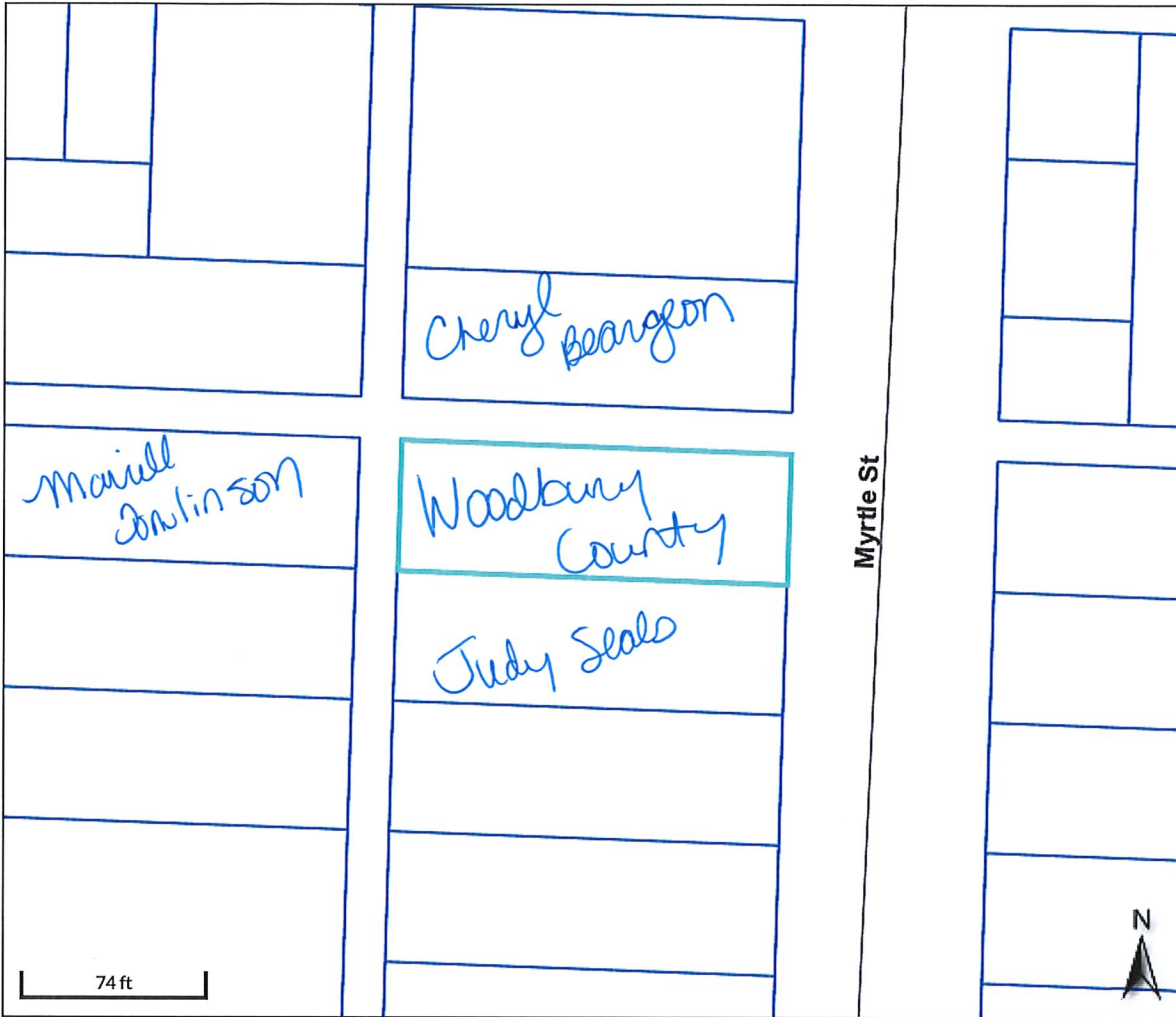
District 087  
 Brief Tax Description TREDWAYS LOT 4 BLK 14  
 (Note: Not to be used on legal documents)

Date created: 12/28/2018  
 Last Data Uploaded: 12/27/2018 6:49:43 PM

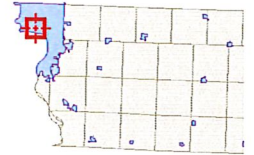
Developed by  Schneider  
 GEOSPATIAL



# Beacon™ Woodbury County, IA / Sioux City



### Overview



### Legend

- Roads
- Corp Boundaries
- Townships
- Parcels

Parcel ID 894729177013  
 Sec/Twp/Rng n/a  
 Property Address 423 MYRTLE ST  
 SIOUX CITY

Alternate ID 512580  
 Class R  
 Acreage n/a

Owner Address WOODBURY COUNTY  
 620 DOUGLAS ST  
 SIOUX CITY IA 51101

District 087  
 Brief Tax Description TREDWAYS LOT 4 BLK 14  
 (Note: Not to be used on legal documents)

Date created: 12/28/2018  
 Last Data Uploaded: 12/27/2018 6:49:43 PM

Developed by Schneider  
 GEOSPATIAL

**RESOLUTION #**

**NOTICE OF PROPERTY SALE**

**Parcel #894721451009**

**WHEREAS** Woodbury County, Iowa was the owner under a tax deed of a certain parcel of real estate described as:

**Lot Nine (9), except West Two Hundred Fifty (W 250) feet thereof, and the East Ten (E 10) feet of West Two Hundred Fifty (W 250) feet thereof, in Block Two (2), Kirk's Addition to Sioux City, in the County of Woodbury and State of Iowa  
(836 17<sup>th</sup> Street)**

**NOW THEREFORE,**

**BE IT RESOLVED** by the Board of Supervisors of Woodbury County, Iowa as follows:

1. That a public hearing on the aforesaid proposal shall be held on the **15<sup>th</sup> Day of January, 2019 at 4:37 o'clock p.m.** in the basement of the Woodbury County Courthouse.
2. That said Board proposes to sell the said parcel of real estate on the **15<sup>th</sup> Day of January, 2019**, immediately following the closing of the public hearing to the **City of Sioux City only per Code of Iowa 331.361(2)**.
3. That said Board proposes to sell the said real estate to the **City of Sioux City only for consideration of \$227.00 plus recording fees.**
4. That this resolution, preceded by the caption "Notice of Property Sale" and except for this subparagraph 4 be published as notice of the aforesaid proposal, hearing and sale.

Dated this 2<sup>nd</sup> Day of January, 2019

ATTEST:

WOODBURY COUNTY BOARD OF SUPERVISORS

\_\_\_\_\_  
Patrick F. Gill  
Woodbury County Auditor  
and Recorder

\_\_\_\_\_  
Chairman



**REQUEST FOR MINIMUM BID**

Name: Cheryl Reynolds Date: 5-30-18

Address: City of Sioux City Phone: \_\_\_\_\_

Address or approximate address/location of property interested in:  
836 17<sup>th</sup> St.

GIS PIN # 894721451009

*\*This portion to be completed by Board Administration \**

Legal Description:  
Kirks Ex. W250ft Lot 9 + E 10ft W250ft. Lot 9 Block 2

Tax Sale #/Date: #1159 6/19/06 Parcel # \_\_\_\_\_

Tax Deeded to Woodbury County on: 11/20/18

Current Assessed Value: Land \$100 Building — Total \$100

Approximate Delinquent Real Estate Taxes: \$229.00

Approximate Delinquent Special Assessment Taxes: \$1010.00

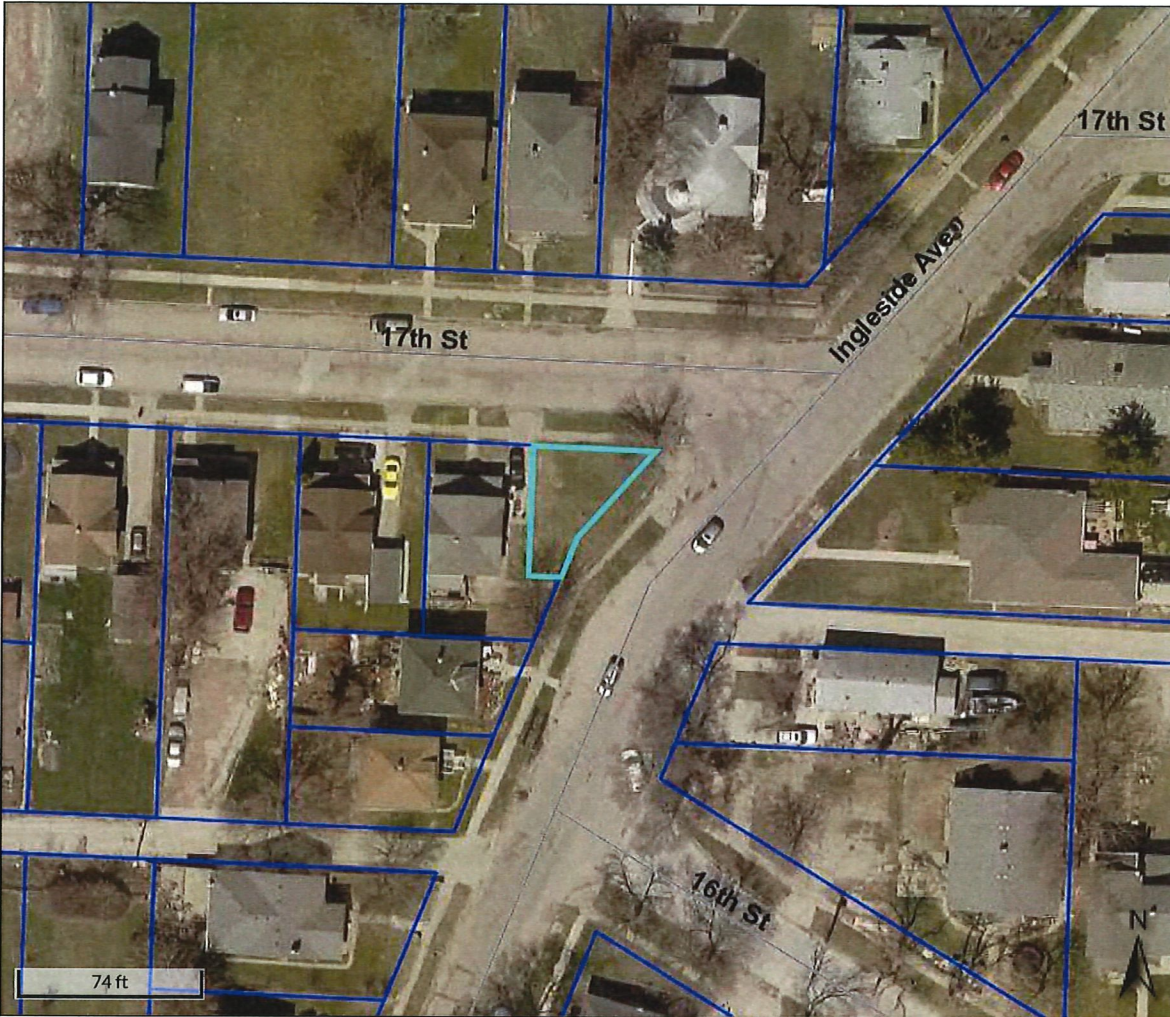
\*Cost of Services: \$127

Inspection to: Rocky Delwitt Date: 6-7-18

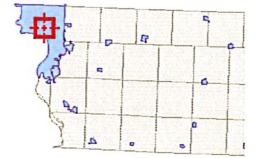
Minimum Bid Set by Supervisor: \$100.00 PLUS costs of \$127 min. bid

Date and Time Set for Auction: January 2<sup>nd</sup> @ 4:37 total: \$227

\* Includes: Abstractors costs; Sheriff's costs; publishing costs; and mailing costs.



Overview



Legend

-  Roads
-  Corp Boundaries
-  Townships
-  Parcels

Parcel ID	894721451009	Alternate ID	286170	Owner Address	WOODBURY COUNTY
Sec/Twp/Rng	n/a	Class	R		620 DOUGLAS ST
Property Address	836 17TH ST	Acreage	n/a		SIOUX CITY IA 51101
	SIOUX CITY				
District	087				
Brief Tax Description	KIRKS EX W 250 FT LOT 9 & E 10 FT W 250 FT LOT 9 BLK 2				
	<b>(Note: Not to be used on legal documents)</b>				

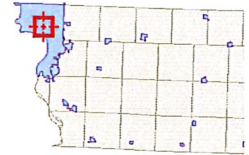
Date created: 12/28/2018  
 Last Data Uploaded: 12/27/2018 6:49:43 PM

Developed by  Schneider  
 GEOSPATIAL





Overview



Legend

-  Roads
-  Corp Boundaries
-  Townships
-  Parcels

Parcel ID	894721451009	Alternate ID	286170	Owner Address	WOODBURY COUNTY
Sec/Twp/Rng	n/a	Class	R		620 DOUGLAS ST
Property Address	836 17TH ST	Acreage	n/a		SIOUX CITY IA 51101
	SIOUX CITY				
District	087				
Brief Tax Description	KIRKS EX W 250 FT LOT 9 & E 10 FT W 250 FT LOT 9 BLK 2				
	<b>(Note: Not to be used on legal documents)</b>				

Date created: 12/28/2018  
 Last Data Uploaded: 12/27/2018 6:49:43 PM

**WOODBURY COUNTY BOARD OF SUPERVISORS AGENDA ITEM(S) REQUEST FORM**

Date: 12/27/2018 Weekly Agenda Date: 1/2/2019

**ELECTED OFFICIAL / DEPARTMENT HEAD / CITIZEN:** Mark J. Nahra, County Engineer

**WORDING FOR AGENDA ITEM:**

Consider a resolution authorizing the County Engineer to close county roads for construction, maintenance, and emergencies during 2019

**ACTION REQUIRED:**

Approve Ordinance

Approve Resolution

Approve Motion

Public Hearing

Other: Informational

Attachments

**EXECUTIVE SUMMARY:**

The County Engineer requests authorization to close roads as necessary for construction, maintenance, and emergencies during calendar year 2019.

**BACKGROUND:**

The Board of Supervisors has jurisdiction over the county road system. Long term and permanent closure of roads requires board approval. Temporary closure of county roads due to emergencies, maintenance work, and construction is sometimes necessary and may be required between board meetings. The Board can authorize the county engineer to close roads under these conditions. (Annual resolution)

**FINANCIAL IMPACT:**

There is no financial impact. This is an annual authorization to temporarily close county roads.

**IF THERE IS A CONTRACT INVOLVED IN THE AGENDA ITEM, HAS THE CONTRACT BEEN SUBMITTED AT LEAST ONE WEEK PRIOR AND ANSWERED WITH A REVIEW BY THE COUNTY ATTORNEY'S OFFICE?**

Yes  No

**RECOMMENDATION:**

Approve the resolution officially authorizing the county engineer to close roads for emergencies, maintenance operations, and construction on behalf of the county board of supervisors in 2019.

**ACTION REQUIRED / PROPOSED MOTION:**

Motion to approve the resolution authorizing the County Engineer to close roads for emergencies, maintenance operations, and construction on behalf of the county board of supervisors in 2019.

RESOLUTION NO. \_\_\_\_\_

RESOLUTION AUTHORIZING THE COUNTY ENGINEER TO CLOSE ANY SECONDARY ROAD FOR THE PURPOSE OF CONSTRUCTION, ROUTINE MAINTENANCE, OR EMERGENCIES DURING 2019

WHEREAS, the Woodbury County Board of Supervisors is concerned about traffic safety involved during construction and maintenance work or during natural or traffic emergencies on the secondary road system, and

WHEREAS, they are further interested in making appropriate traffic accommodations for the traveling public, adjacent landowners and related users during construction and maintenance operations, and

WHEREAS, the Board of Supervisors under section 306.41 of the Code of Iowa can delegate the authority to temporarily closure of roads to the County Engineer,

NOW, THEREFORE, IT IS HEREBY RESOLVED by the Woodbury County Board of Supervisors give Mark J. Nahra, Woodbury County Engineer the authority to temporarily close sections of highway in Woodbury County's road system when necessary because of construction, maintenance, emergencies, or natural disaster.

DATED this 2<sup>nd</sup> day of January, 2019.

WOODBURY COUNTY BOARD OF SUPERVISORS

ATTESTED:

BY: \_\_\_\_\_

Chair

\_\_\_\_\_  
Patrick F. Gill, County Auditor

\_\_\_\_\_  
\_\_\_\_\_  
\_\_\_\_\_  
\_\_\_\_\_



**WOODBURY COUNTY BOARD OF SUPERVISORS AGENDA ITEM(S) REQUEST FORM**

Date: 12/27/2018 Weekly Agenda Date: 1/2/2019

**ELECTED OFFICIAL / DEPARTMENT HEAD / CITIZEN:** Mark J. Nagra, County Engineer

**WORDING FOR AGENDA ITEM:**

Consider a resolution authorizing the County Engineer to execute certification of completion of work on Federal Aid, State Aid and Farm to Market Construction during 2019

**ACTION REQUIRED:**

- Approve Ordinance
- Approve Resolution
- Approve Motion
- Public Hearing
- Other: Informational
- Attachments

**EXECUTIVE SUMMARY:**

The County Engineer requests authorization to accept work and certify its completion in compliance with approved plans and specifications on behalf of Woodbury County.

**BACKGROUND:**

Section 309.21 Code of Iowa: Supervision of construction and maintenance work. - All construction and maintenance work shall be performed under the direct and immediate supervision of the county engineer who shall be deemed responsible for the efficient, economical and good-faith performance of said work. This resolution is approved annually.

**FINANCIAL IMPACT:**

There is no financial impact. This is an annual authorization to complete project closure paperwork.

**IF THERE IS A CONTRACT INVOLVED IN THE AGENDA ITEM, HAS THE CONTRACT BEEN SUBMITTED AT LEAST ONE WEEK PRIOR AND ANSWERED WITH A REVIEW BY THE COUNTY ATTORNEY'S OFFICE?**

Yes  No

**RECOMMENDATION:**

Approve the resolution officially authorizing the county engineer to certify completion of work on federal aid, state aid and farm to market construction work on behalf of the county.

**ACTION REQUIRED / PROPOSED MOTION:**

Motion to approve the resolution authorizing the County Engineer to accept federal aid, state aid and farm to market construction work on behalf of the county during 2019.

RESOLUTION NO. \_\_\_\_\_

RESOLUTION AUTHORIZING THE COUNTY ENGINEER TO EXECUTE  
CERTIFICATION OF COMPLETION OF WORK ON FEDERAL AID, STATE AID, AND  
FARM TO MARKET CONSTRUCTION DURING 2019

BE IT RESOLVED by the Board of Supervisors of Woodbury County, Iowa, that Mark J. Nahra, the County Engineer of Woodbury County, Iowa, be and is hereby designated, authorized, and empowered on behalf of the Board of Supervisors of said County to execute the certification of completion of work and final acceptance thereof in accordance with plans and specifications in connection with all Farm-to-Market and federal or state aid construction projects in this county.

Dated at Sioux City, Iowa, this 2<sup>nd</sup> day of January, 2019.

Board of Supervisors of Woodbury County, Iowa

\_\_\_\_\_  
Chair

\_\_\_\_\_

\_\_\_\_\_

\_\_\_\_\_

\_\_\_\_\_

ATTEST:

By \_\_\_\_\_  
Patrick F. Gill, Woodbury County Auditor

SEAL

There was an excellent meeting of the Rolling Hills governance board on December 27 in which non-core funding requests were considered. This will allow us to clearly discern a budget target, which is \$3,444,687. This figure includes \$323,000 in new core services, which are mandated by the legislature and have been programmed on a per capita basis. This amount grandfathered in a 250% over poverty level on reimbursements, which was our past practice and includes some additional community service money, \$70,000, to Friendship House/SMHC community support.

As you all know, Woodbury County must cover its full expenses through the mental health levy and whatever distribution from Sioux Rivers that rightfully belongs to Woodbury County taxpayers from their contributed reserves and leftover portion after withdrawal.

Rolling Hills had initially been set up to have both a region reserve as well as (7) separate county reserves. While they were targeting to get down to 25%, DHS and department of management guidance has clarified that their aggregate (combined) fund balances must be down to 20%.

This will significantly lower what the 7 counties contribute this year for two reasons. First, the population with Woodbury County will put them on a level that mandates 20% reserves (pop. exceeding 100,000) rather than 25% (pop. under 100,000). Second, by having to utilize this much reserve in one year (double what was previously projected), they are setting a target of 30%, which I believe is wise for all taxpayers. We will likewise target 30% as well.

The reason that this is wise is that the legislature may take action on the reserve funding percentages that are allowable (it's a key ISAC issue), there is no clawback or loss of contributed funds, and the mechanism for Iowa code is that if a region is higher than the mandated percentage, that it is lowered by property tax relief the next year on an equitable basis.

They are targeting 30%. If we bring 30% reserves and must fully cover our expenses the first year, assuming we do not spend one dollar more nor one dollar less, we will have 30%. This figure is \$1,033,406.18. This is a total of \$4,478,693. It is currently estimated conservatively that we will leave Sioux Rivers with \$1,448,000 of our money leaving \$3,030,093 to tax for. With a new population of 102,429, the effect is \$29.58 per capita.

Rolling Hills took action to reflect that they will not need as much up-front parity. The \$1,828,250 (\$1 million plus 25%) based on a previously conceived target of both the county reserves (that they are zeroing out) and region reserves bring at 25% will instead require just having our 30%, or \$1,033,406.18.

Remembering that we effectively paid off some debt (raising the same amount of overall levy and had resisted going down on the MH below the \$28.58 to \$22.58), the overall effect that this will have on the budget will be just over \$100,000.

Some of the key highlights that this budget on non-core funding includes the full funding request of Shessler Hall, which the board approved at \$70,661 for 19 beds.

The ARC of Woodbury County was funded at their full request of \$60,000. There is some interest in perhaps having adjacent counties utilize this service or even expand into other easterly counties in the near future. I made the point that it would seem reasonable for Plymouth or Sioux to simply be charged on a pro rata basis if they desire to continue to use this service. The program runs from the first week of June until July 27.

The Sanford Center was funded at half of the request at \$130,000 and Siouxland Mental Health agreed that they could provide \$306,254 in school-based services by billing Medicaid (Title 19) and private insurance. Gap funding within the Sioux City Community School District for a population who meets neither criteria is \$127,337 which was granted by Rolling Hills. The school district requests were deemed duplicative and additional monies requested were met with understandable resistance to backfill an expiring federal grant that their request of \$777,000 was seeking to help support.