



NOTICE OF MEETING OF THE WOODBURY COUNTY BOARD OF SUPERVISORS
(APRIL 27, 2021) (WEEK 17 OF 2021)

Live streaming at:
https://www.youtube.com/user/woodburycountyiowa

Agenda and Minutes available at:
www.woodburycountyiowa.gov

Live telephonic access at: 712-224-6014

Rocky L. DeWitt 253-0421 rdewitt@woodburycountyiowa.gov
Keith W. Radig 560-6542 kradig@woodburycountyiowa.gov
Mark A. Monson 204-1015 mmonson@woodburycountyiowa.gov
Matthew A. Ung 490-7852 matthewung@woodburycountyiowa.gov
Justin Wright 899-9044 jwright@woodburycountyiowa.gov

You are hereby notified a meeting of the Woodbury County Board of Supervisors will be held April 27, 2021 at 4:30 p.m. in the Basement of the Courthouse, 620 Douglas Street, Sioux City, Iowa for the purpose of taking official action on the agenda items shown hereinafter and for such other business that may properly come before the Board.

This is a formal meeting during which the Board may take official action on various items of business. If you wish to speak on an item, please follow the seven participation guidelines adopted by the Board for speakers.

- 1. Anyone may address the Board on any agenda item after initial discussion by the Board.
2. Speakers will approach the microphone one at a time and be recognized by the Chair.
3. Speakers will give their name, their address, and then their statement.
4. Everyone will have an opportunity to speak. Therefore, please limit your remarks to three minutes on any one item.
5. At the beginning of the discussion on any item, the Chair may request statements in favor of an action be heard first followed by statements in opposition to the action.
6. Any concerns or questions you may have which do not relate directly to a scheduled item on the agenda will also be heard under the first or final agenda item "Citizen Concerns."
7. For the benefit of all in attendance, please turn off all cell phones and other devices while in the Board Chambers.

AGENDA

4:30 p.m. Call Meeting to Order – Pledge of Allegiance to the Flag – Moment of Silence

- 1. Citizen Concerns Information
2. Approval of the agenda Action

Consent Agenda

Items 3 through 5 constitute a Consent Agenda of routine action items to be considered by one motion. Items pass unanimously unless a separate vote is requested by a Board Member.

- 3. Approval of the minutes of the April 20, 2021 meeting
4. Approval of claims
5. Human Resources – Melissa Thomas
a. Approval of Memorandum of Personnel Transactions
b. Authorization to Initiate Hiring Process
c. Approval of retiree request to remain on the county health, dental and vision plans

End Consent Agenda

6. Secondary Roads – Mark Nahra
  - a. Approval of resolution setting the interest rates on drainage district warrants during fiscal year 2022
  - b. Approval of resolutions for drainage district tax levies

**Recess Board of Supervisors Meeting  
Convene Wolf Creek Drainage District Trustees Meeting**

7. Approval of contract for embankment repair and debris cleanup in the Wolf Creek Drainage District

**Adjourn Wolf Creek Drainage District Trustees Meeting  
Continue Board of Supervisors Meeting**

- |                                |   |             |
|--------------------------------|---|-------------|
| <b>4:35 p.m.</b><br>(Set time) | 8. Board Administration – Heather Satterwhite<br>Public hearing and sale of property parcel #894720382013 (aka 1510 Myrtle St.)   | Action      |
|                                | 9. Board Administration – Dennis Butler<br>Approval of the Woodbury County Non-profit Funding Request for Siouxland Mental Health | Action      |
|                                | 10. Board of Supervisors – Rocky De Witt<br>Approval of number of appointees for redistricting & reprecincting                    | Action      |
|                                | 11. Reports on Committee Meetings   | Information |
|                                | 12. Citizen Concerns  | Information |
|                                | 13. Board Concerns  | Information |

**ADJOURNMENT**

*Subject to Additions/Deletions*

---

## CALENDAR OF EVENTS

- MON. APR., 26 6:00 p.m.** Zoning Commission Meeting, First Floor Boardroom
- TUE., APR., 27 2:00 p.m.** Decat Board Meeting, Western Hills AEA, Room F
- WED., APR. 28 1:00 p.m.** Annual Hazardous Materials Response Commission, The Security Institute, Lower Level
- 1:30 p.m.** Region IV Local Emergency Planning Committee (LEPC), The Security Institute
- 2:30 p.m.** Rolling Hills Community Services Region Governance Board Meeting
- MON., MAY 3 6:00 p.m.** Board of Adjustment meeting, First Floor Boardroom
- WED., MAY 5 9:00 a.m.** Loess Hills Alliance Protection Committee Meeting, Pisgah, Iowa
- 10:30 a.m.** Loess Hills Alliance Stewardship Meeting
- 12:00 p.m.** District Board of Health Meeting, 1014 Nebraska St.
- 1:00 p.m.** Loess Hills Alliance Executive Meeting
- 3:45 p.m.** Veteran Affairs Meeting, Veteran Affairs Office, 1211 Tri-View Ave.
- THU., MAY 6 10:00 a.m.** COAD Meeting, The Security Institute
- TUE., MAY 11 4:00 p.m.** Conservation Board Meeting, Dorothy Pecaut Nature Center, Stone Park
- THU., MAY 13 12:00 p.m.** SIMPCO Board of Directors, 1122 Pierce St.
- WED. MAY 19 8:05 a.m.** Woodbury County Information Communication Commission, First Floor Boardroom
- 10:00 a.m.** Siouxland Center for Active Generations Board of Directors Meeting, 313 Cook St.
- 12:00 p.m.** Siouxland Economic Development Corporation Meeting, 617 Pierce St., Ste. 202
- THU. MAY 20 4:30 p.m.** Community Action Agency of Siouxland Board Meeting, 2700 Leech Avenue
- FRI. MAY 21 12:00 p.m.** Siouxland Human Investment Partnership Board Meeting, ZOOM
- MON. MAY 24 6:00 p.m.** Zoning Commission Meeting, First Floor Boardroom
- TUE. MAY 25 2:00 p.m.** Decat Board Meeting, Western Hills AEA, Room F
- WED. MAY 26 2:30 p.m.** Rolling Hills Community Services Region Governance Board Meeting
- THU. MAY 27 11:00 a.m.** Siouxland Regional Transit Systems (SRTS) Board Meeting, SIMPCO Office, 1122 Pierce

**Woodbury County is an Equal Opportunity Employer. In compliance with the Americans with Disabilities Act, the County will consider reasonable accommodations for qualified individuals with disabilities and encourages prospective employees and incumbents to discuss potential accommodations with the Employer.**

*Federal and state laws prohibit employment and/or public accommodation discrimination on the basis of age, color, creed, disability, gender identity, national origin, pregnancy, race, religion, sex, sexual orientation or veteran's status. If you believe you have been discriminated against, please contact the Iowa Civil Rights Commission at 800-457-4416 or Iowa Department of Transportation's civil rights coordinator. If you need accommodations because of a disability to access the Iowa Department of Transportation's services, contact the agency's affirmative action officer at 800-262-0003.*

## APRIL 20, 2021, SIXTEENTH MEETING OF THE WOODBURY COUNTY BOARD OF SUPERVISORS

The Board of Supervisors met on Tuesday, April 20, 2021 at 4:30 p.m. Board members present were Radig, Ung, Monson, De Witt, and Wright (by phone). Staff members present were Karen James, Board Administrative Assistant, Melissa Thomas, HR Director, Joshua Widman, Board Attorney, Dennis Butler, Budget/Tax Analyst, and Patrick Gill, Auditor/Clerk to the Board.

The regular meeting was called to order with the Pledge of Allegiance to the Flag and a Moment of Silence.

1. Gary Brown, Emergency Services Director, announced his retirement effective July 6<sup>th</sup>, 2021.
2. Motion by Monson second by De Witt to approve the agenda for April 20, 2021. Carried 5-0. Copy Filed.

Motion by De Witt second by Ung to approve the following items by consent:

3. To approve minutes of the April 13, 2021 meeting. Copy filed.
4. To approve the claims totaling \$537,225.59. Copy filed.
- 5a. To approve the appointment of Tina Bertrand, Treasurer, County Treasurer Dept., effective 04-20-21, \$93,865.21/year. Appointment.; the promotion of Preston Newman, Sheriff Deputy, County Sheriff Dept., effective 04-19-21, \$25.14/hour, 22%=\$4.68/hr. Promotion from Civilian Jailer to Deputy.; and reclassification of Madison Warder, Asst. County Attorney, County Attorney Dept., effective 05-03-21, \$71,131/year, 4.8%=\$3,262/year. Per AFSCME Asst. County Attorney Contract agreement, from Step 3 to Step 4. Copy filed.
- 5b. To approve the agreements with Infinisource to become Woodbury County's COBRA administrator. Copy filed.
6. To receive Iowa County Treasurer's Semi-Annual Report. Copy filed.
7. To receive Juvenile Detention's March population report. Copy filed.
8. To receive the County Recorder's Report of Fees Collected for the period of 01/01/2021 through 03/31/2021. Copy filed.
9. To approve items to be auctioned per Personal Property Disposition Policy. Copy filed.
- 10a. To approve the permit to work in the right of way for Rick Patterson. Copy filed.
- 10b. To approve the permit to work in the right of way for Kevin Heck. Copy filed.
- 10c. To approve the permit to work in the right of way for Daniel Hair. Copy filed.
- 10d. To approve the tile crossing permit for Gary Jepsen. Copy filed.

Carried 5-0.

11. Motion by Monson second by De Witt to approve the contract for project #CP-2021, CMP Culvert Supply for 2021 with Metal Culverts, Inc. for \$125,744.40. Carried 5-0. Copy filed.

Motion by De Witt second by Ung to receive Gary Brown's letter of resignation. Carried 5-0.

12. A public hearing was held at 4:40 p.m. for the proposed vacation of right of way. The Chairperson called on anyone wishing to be heard.

Motion by Monson second by De Witt to close the public hearing. Carried 5-0.

- 13a. A public hearing was held at 4:50 p.m. to levy General Basic property tax rate which exceed statutory maximum. The Chairperson called on anyone wishing to be heard.  
  
Motion by Monson second by De Witt to close the public hearing. Carried 5-0.
- 13b. A public hearing was held for proposed Fiscal Year 2022 budget.  
  
Motion by Monson second by De Witt to close the public hearing. Carried 5-0.
- 13c. Motion by Monson second by De Witt to approve and authorize the Chairperson to sign a Resolution approval of FY 2021/2022 Budget and Certification of Taxes. Carried 5-0.

**APPROVAL OF FY 2021/2022 BUDGET AND CERTIFICATION OF TAXES  
RESOLUTION #13,158**

WHEREAS, the Woodbury County Board of Supervisors has considered the proposed FY 2021/2022 county budget and certification of taxes, and

WHEREAS, a public hearing concerning the proposed county budget was held on April 20, 2021,

NOW, THEREFORE, BE IT RESOLVED by the Board of Supervisors of Woodbury County that the county budget and certificate of taxes for FY 2021/2022 as set forth in the budget summary, is hereby adopted and that the Woodbury County Auditor is directed to file said budget and to establish accounting records in accordance with the attached schedules.

BE IT FURTHER RESOLVED that the Chairperson and the County Auditor be and are hereby authorized to sign the approved FY 2021/2022 county budget.

Signed and dated this 20<sup>th</sup> day of April, 2021.  
WOODBURY COUNTY BOARD OF SUPERVISORS  
Copy filed.

- 14. The Board heard reports on committee meetings.
- 15. There were no citizen concerns.
- 16. Board concerns were heard.

The Board adjourned the regular meeting until April 27, 2021.

Meeting sign in sheet. Copy filed.

# HUMAN RESOURCES DEPARTMENT

## MEMORANDUM OF PERSONNEL TRANSACTIONS

**DATE:** April 27, 2021

**\* PERSONNEL ACTION CODE:**

A - Appointment	R - Reclassification
T - Transfer	E - End of Probation
P - Promotion	S - Separation
D - Demotion	O - Other

**TO: WOODBURY COUNTY BOARD OF SUPERVISORS**

NAME	DEPARTMENT	EFFECTIVE DATE	JOB TITLE	SALARY REQUESTED	% INCREASE	*	REMARKS
Carrell, Dustin	Secondary Roads	4-16-21	Motor Grader Operator			S	Separation.
Kessel, Jonah	County Sheriff	5-10-21	Civilian Jailer	\$20.46/hour		A	Job Vacancy Posted 3-3-21. Entry Level Salary: \$20.46/hour.
Brown, Gary	Emergency Services	7-06-21	Director			S	Retirement.

**APPROVED BY BOARD DATE:** \_\_\_\_\_

**MELISSA THOMAS, HR DIRECTOR:** *Melissa Thomas HR Director*

**HUMAN RESOURCES DEPARTMENT**

**WOODBURY COUNTY, IOWA**

**DATE: April 27, 2021**

**AUTHORIZATION TO INITIATE HIRING PROCESS**

<b>DEPARTMENT</b>	<b>POSITION</b>	<b>ENTRY LEVEL</b>	<b>APPROVED</b>	<b>DISAPPROVED</b>
Secondary Roads	Motor Grader Operator	CWA: \$24.31/hour		

\_\_\_\_\_  
Chairman, Board of Supervisors



# Woodbury County Secondary Roads Department

759 E. Frontage Road • Merville, Iowa 51039

Telephone (712) 279-6484 • (712) 873-3215 • Fax (712) 873-3235

COUNTY ENGINEER  
Mark J. Nahra, P.E.  
mnahra@sioux-city.org

ASSISTANT TO THE COUNTY ENGINEER  
Benjamin T. Kusler, E.I.T.  
bkusler@sioux-city.org

SECRETARY  
Tish Brice  
tbrice@sioux-city.org

To: Board of Supervisors  
Human Resources Department

From: Mark Nahra, Woodbury County Engineer

Date: April 21, 2021

Subject: Hornick District Staff Level – Dustin Carrel separation

With the separation of Dustin Carrel from county employment, a motor grader operator position will be vacant in our District 5 unit at Hornick. This will leave the district shorthanded if the vacancy is not filled.

**RECOMMENDATION:** It is my recommendation that we fill the vacant motor grader operator position immediately. Thank you for your attention.



Gary E Brown  
160 West 40<sup>th</sup> St  
Sioux City, Iowa 51104  
April 20, 2021

Woodbury County Board of Supervisors  
Woodbury County Court House  
620 Douglas St  
Sioux City, Iowa 51101

Dear Woodbury County Board of Supervisors:

I am requesting to remain on the county's family healthcare, dental, and optical plans.

Thank you.



Gary Brown

**WOODBURY COUNTY BOARD OF SUPERVISORS AGENDA ITEM(S) REQUEST FORM**

Date: 04/22/2021 Weekly Agenda Date: 04/27/2021

**ELECTED OFFICIAL / DEPARTMENT HEAD / CITIZEN:** Mark J. Nahra, County Engineer

**WORDING FOR AGENDA ITEM:**

Consider a resolution to set the interest rates on drainage district warrants during fiscal year 2022.

**ACTION REQUIRED:**

- |  |  |   |
|--|--|---|
| Approve Ordinance <input type="checkbox"/> | Approve Resolution <input checked="" type="checkbox"/> | Approve Motion <input type="checkbox"/>         |
| Public Hearing <input type="checkbox"/>    | Other: Informational <input type="checkbox"/>          | Attachments <input checked="" type="checkbox"/> |

**EXECUTIVE SUMMARY:**

The Woodbury County Board of Supervisors can set the interest rate paid on drainage district warrants for districts for which the Board serves as trustees.

**BACKGROUND:**

Under Sec. 74A.3 (1c). Special assessment bonds, certificates, warrants or other obligations, the principal and interest of which are payable from special assessments levied against benefited property may bear interest at a rate to be set by the issuing governmental body or agency.  
74A.3(2). The interest rates authorized by this section to be set by the issuing government.

**FINANCIAL IMPACT:**

There is no financial impact to the county board. Interest rates are paid by drainage district properties benefited within each district under the jurisdiction of the Board. The past several years the interest rate has been set at 5.0%.

**IF THERE IS A CONTRACT INVOLVED IN THE AGENDA ITEM, HAS THE CONTRACT BEEN SUBMITTED AT LEAST ONE WEEK PRIOR AND ANSWERED WITH A REVIEW BY THE COUNTY ATTORNEY'S OFFICE?**

Yes  No

**RECOMMENDATION:**

Approve the resolution setting interest rates for drainage district warrants for districts under the jurisdiction of the Woodbury County Board of Supervisors.

**ACTION REQUIRED / PROPOSED MOTION:**

Motion to approve the resolution setting interest rates for drainage district warrants for districts under the jurisdiction of the Woodbury County Board of Supervisors.

**WOODBURY COUNTY, IOWA**

**RESOLUTION # \_\_\_\_\_**

**RESOLUTION ESTABLISHING THE INTEREST RATE PAID ON DRAINAGE WARRANTS**

**WHEREAS**, the Woodbury County Board of Supervisors has the authority to establish the interest rate on drainage warrants pursuant to Iowa Code Chapter 468.

**NOW, THEREFORE, BE IT RESOLVED**, by the Woodbury County Board of Supervisors that the interest rate for Drainage Warrants is hereby set at 5% APR for Fiscal Year 2022.

**SO RESOLVED** this 27<sup>th</sup> day of April, 2021.  
WOODBURY COUNTY BOARD OF SUPERVISORS

**DATED** this 27<sup>th</sup> day of April, ,2021

**WOODBURY COUNTY BOARD OF SUPERVISORS**

**ATTESTED:**

**BY:**

\_\_\_\_\_  
Rocky DeWitt, Chairman

\_\_\_\_\_  
Patrick F. Gill, County Auditor

\_\_\_\_\_  
\_\_\_\_\_  
\_\_\_\_\_  
\_\_\_\_\_

**WOODBURY COUNTY BOARD OF SUPERVISORS AGENDA ITEM(S) REQUEST FORM**

Date: 4/21/2021 Weekly Agenda Date: 4/27/2021

**ELECTED OFFICIAL / DEPARTMENT HEAD / CITIZEN:** Mark J. Nahra, County Engineer

**WORDING FOR AGENDA ITEM:**

Consider approval of drainage district tax levies

**ACTION REQUIRED:**

- |  |   |  |
|--|---|--|
| Approve Ordinance <input type="checkbox"/> | Approve Resolution <input type="checkbox"/>   | Approve Motion <input checked="" type="checkbox"/> |
| Public Hearing <input type="checkbox"/>    | Other: Informational <input type="checkbox"/> | Attachments <input type="checkbox"/>               |

**EXECUTIVE SUMMARY:**

The county board of supervisors serves as trustees for nine drainage districts. Annually tax levies to meet the expenses of maintaining the drainage districts are set by the Board.

**BACKGROUND:**

Recommended tax levies are attached for Board consideration.

**FINANCIAL IMPACT:**

The levies are imposed upon benefited lands by formulas approved at the adoption of the drainage district.

**IF THERE IS A CONTRACT INVOLVED IN THE AGENDA ITEM, HAS THE CONTRACT BEEN SUBMITTED AT LEAST ONE WEEK PRIOR AND ANSWERED WITH A REVIEW BY THE COUNTY ATTORNEY'S OFFICE?**

Yes  No

**RECOMMENDATION:**

Recommend that the board the attached resolutions setting levies for nine drainage districts.

**ACTION REQUIRED / PROPOSED MOTION:**

The Board is to make individual motions approving each drainage district resolution.

DRAINAGE TAX

FY 2021/22  
**RECOMMENDED DRAINAGE ASSESSMENTS FOR DRAINAGE DISTRICTS  
 UNDER THE DIRECT CONTROL OF THE  
 WOODBURY COUNTY BOARD OF SUPERVISORS, AS TRUSTEES**

Treasurer's Balance - Outstanding Warrants = Auditor's Balance

Drainage District	Year Built	Original Cost	County Treasurer's Balance April 15, 2021	Outstanding Warrants** April 15, 2021	County Auditor's Balance April 15, 2021	7/1/21 to 6/30/22 Other Est. Expenditures	FY 2021-22 Recommended Levy
1. Anthon Central	1925	\$ 4,943.00	\$ 357.03	\$ 155.45	\$ 201.58	\$ -.	\$ 100.00
2. Bennett-McDonald	1963	1,320.00	1,066.44	6.00	1,060.44	-.	0.00
3. Maple River	1920	44,249.00	143.47	---	143.47	-.	0.00
4. Orton Slough	1919	16,109.00	788.98	279.11	509.87	-.	0.00
5. Smithland	1916	12,473.00	17,846.23	---	17,846.23	-.	0.00
6. Smokey Hollow	1924	1,048.00	3,089.33	---	3,089.33	-.	0.00
7. Weber Creek	1931	9,599.00	3,555.55	---	3,555.55	-.	0.00
8. Wolf Creek	1908	34,418.00	19,202.50	5,683.72	13,518.78	-.	20,000.00
9. Wolf Creek Pump	1985	21,262.45	2,200.61	1,912.90	287.71	0.00	0.00 *
Sub-Dist 2			67.03	---	67.03	0.00	0.00
Sub-Dist 3			1,536.75	1,029.24	507.51	0.00	0.00

\*(Hearing not required.) Section 468.126,1c, Code of Iowa 2015, states in part: "If the estimated cost of a repair exceeds twenty thousand dollars, or seventy-five percent of the original total cost of the district and subsequent improvements, whichever is the greater amount, the board shall set a date for a hearing on the matter of making the proposed repairs, ---."

\*\*Balance verification

Dated this \_\_\_\_\_ day of April, 2021

\_\_\_\_\_  
 Dennis D. Butler - Supervisor's Office

\_\_\_\_\_  
 Mark J. Nahra - County Engineer

RESOLUTION NO. \_\_\_\_\_

ORTON SLOUGH DRAINAGE DISTRICT

RESOLUTION LEVYING SPECIAL ASSESSMENT AND CERTIFICATE  
TO THE COUNTY AUDITOR OF WOODBURY COUNTY, IOWA

WHEREAS, the Woodbury County Board of Supervisors is the governing body of the Orton Slough Drainage District of Woodbury County, Iowa; and

WHEREAS, said Board, as Trustees, has determined that it is necessary to levy a special tax and/or assessment on all tracts of land, lots, railroad companies and public highways within the boundaries of the said Drainage District.

NOW, THEREFORE, IT IS HEREBY RESOLVED by the Woodbury County Board of Supervisors as the governing body of the Orton Slough Drainage District, that a special tax and/or assessment in the sum of \$ 0.00 be levied against all the tracts of land, lots, railroad companies and public highways within said Drainage District, same to be in the same ratio and upon the same classification as heretofore established, adopted and confirmed.

BE IT FURTHER RESOLVED that the said levy and/or assessment be and the same is hereby certified to the Woodbury County Auditor who is hereby directed to effect said levy and/or assessment against all of the said lands, etc., in the same ratio and upon the same classification as heretofore adopted, established and confirmed and enter same upon the tax list of Woodbury County for collection with the first half of the current year real estate taxes.

DATED this \_\_\_\_\_ day of April, 2021

WOODBURY COUNTY BOARD OF SUPERVISORS

ATTESTED:

BY: \_\_\_\_\_

Chairman

\_\_\_\_\_  
Patrick F. Gill, County Auditor

\_\_\_\_\_  
\_\_\_\_\_  
\_\_\_\_\_

RESOLUTION NO. \_\_\_\_\_

SMOKEY HOLLOW DRAINAGE DISTRICT

RESOLUTION LEVYING SPECIAL ASSESSMENT AND CERTIFICATE  
TO THE COUNTY AUDITOR OF WOODBURY COUNTY, IOWA

WHEREAS, the Woodbury County Board of Supervisors is the governing body of the Smoky Hollow Drainage District of Woodbury County, Iowa; and

WHEREAS, said Board, as Trustees, has determined that it is necessary to levy a special tax and/or assessment on all tracts of land, lots, railroad companies and public highways within the boundaries of the said Drainage District.

NOW, THEREFORE, IT IS HEREBY RESOLVED by the Woodbury County Board of Supervisors as the governing body of the Smoky Hollow Drainage District, that a special tax and/or assessment in the sum of \$ 0.00 be levied against all the tracts of land, lots, railroad companies and public highways within said Drainage District, same to be in the same ratio and upon the same classification as heretofore established, adopted and confirmed.

BE IT FURTHER RESOLVED that the said levy and/or assessment be and the same is hereby certified to the Woodbury County Auditor who is hereby directed to effect said levy and/or assessment against all of the said lands, etc., in the same ratio and upon the same classification as heretofore adopted, established and confirmed and enter same upon the tax list of Woodbury County for collection with the first half of the current year real estate taxes.

DATED this \_\_\_\_\_ day of April, 2021.

WOODBURY COUNTY BOARD OF SUPERVISORS

ATTESTED:

BY: \_\_\_\_\_

Chairman

\_\_\_\_\_  
Patrick F. Gill, County Auditor

\_\_\_\_\_  
\_\_\_\_\_  
\_\_\_\_\_

RESOLUTION NO. \_\_\_\_\_

WEBER CREEK DRAINAGE DISTRICT

RESOLUTION LEVYING SPECIAL ASSESSMENT AND CERTIFICATE  
TO THE COUNTY AUDITOR OF WOODBURY COUNTY, IOWA

WHEREAS, the Woodbury County Board of Supervisors is the governing body of the Weber Creek Drainage District of Woodbury County, Iowa; and

WHEREAS, said Board, as Trustees, has determined that it is necessary to levy a special tax and/or assessment on all tracts of land, lots, railroad companies and public highways within the boundaries of the said Drainage District.

NOW, THEREFORE, IT IS HEREBY RESOLVED by the Woodbury County Board of Supervisors as the governing body of the Weber Creek Drainage District, that a special tax and/or assessment in the sum of \$ 0.00 be levied against all the tracts of land, lots, railroad companies and public highways within said Drainage District, same to be in the same ratio and upon the same classification as heretofore established, adopted and confirmed.

BE IT FURTHER RESOLVED that the said levy and/or assessment be and the same is hereby certified to the Woodbury County Auditor who is hereby directed to effect said levy and/or assessment against all of the said lands, etc., in the same ratio and upon the same classification as heretofore adopted, established and confirmed and enter same upon the tax list of Woodbury County for collection with the first half of the current year real estate taxes.

DATED this \_\_\_\_\_ day of April, 2021.

WOODBURY COUNTY BOARD OF SUPERVISORS

ATTESTED:

BY: \_\_\_\_\_  
Chairman

\_\_\_\_\_  
Patrick F. Gill, County Auditor

\_\_\_\_\_  
\_\_\_\_\_  
\_\_\_\_\_



RESOLUTION NO. \_\_\_\_\_

WOLF CREEK DRAINAGE DISTRICT

RESOLUTION LEVYING SPECIAL ASSESSMENT AND CERTIFICATE  
TO THE COUNTY AUDITOR OF WOODBURY COUNTY, IOWA

WHEREAS, the Woodbury County Board of Supervisors is the governing body of the Wolf Creek Drainage District of Woodbury County, Iowa; and

WHEREAS, said Board, as Trustees, has determined that it is necessary to levy a special tax and/or assessment on all tracts of land, lots, railroad companies and public highways within the boundaries of the said Drainage District.

NOW, THEREFORE, IT IS HEREBY RESOLVED by the Woodbury County Board of Supervisors as the governing body of the Wolf Creek Drainage District, that a special tax and/or assessment in the sum of \$ 20,000.00 be levied against all the tracts of land, lots, railroad companies and public highways within said Drainage District, same to be in the same ratio and upon the same classification as heretofore established, adopted and confirmed.

BE IT FURTHER RESOLVED that the said levy and/or assessment be and the same is hereby certified to the Woodbury County Auditor who is hereby directed to effect said levy and/or assessment against all of the said lands, etc., in the same ratio and upon the same classification as heretofore adopted, established and confirmed and enter same upon the tax list of Woodbury County for collection with the first half of the current year real estate taxes.

DATED this \_\_\_\_\_ day of April, 2021.

WOODBURY COUNTY BOARD OF SUPERVISORS

ATTESTED:

BY: \_\_\_\_\_  
Chairman

\_\_\_\_\_  
Patrick F. Gill, County Auditor

\_\_\_\_\_  
\_\_\_\_\_  
\_\_\_\_\_

RESOLUTION NO. \_\_\_\_\_

BENNETT-MCDONALD DRAINAGE DISTRICT

RESOLUTION LEVYING SPECIAL ASSESSMENT AND CERTIFICATE  
TO THE COUNTY AUDITOR OF WOODBURY COUNTY, IOWA

WHEREAS, the Woodbury County Board of Supervisors is the governing body of the Bennett-McDonald Drainage District of Woodbury County, Iowa; and

WHEREAS, said Board, as Trustees, has determined that it is necessary to levy a special tax and/or assessment on all tracts of land, lots, railroad companies and public highways within the boundaries of the said Drainage District.

NOW, THEREFORE, IT IS HEREBY RESOLVED by the Woodbury County Board of Supervisors as the governing body of the Bennett-McDonald Drainage District, that a special tax and/or assessment in the sum of \$ 0.00 be levied against all the tracts of land, lots, railroad companies and public highways within said Drainage District, same to be in the same ratio and upon the same classification as heretofore established, adopted and confirmed.

BE IT FURTHER RESOLVED that the said levy and/or assessment be and the same is hereby certified to the Woodbury County Auditor who is hereby directed to effect said levy and/or assessment against all of the said lands, etc., in the same ratio and upon the same classification as heretofore adopted, established and confirmed and enter same upon the tax list of Woodbury County for collection with the first half of the current year real estate taxes.

DATED this \_\_\_\_\_ day of April, 2021.

WOODBURY COUNTY BOARD OF SUPERVISORS

ATTESTED:

BY: \_\_\_\_\_  
Chairman

\_\_\_\_\_  
Patrick F. Gill, County Auditor

\_\_\_\_\_  
\_\_\_\_\_  
\_\_\_\_\_

RESOLUTION NO. \_\_\_\_\_

SMITHLAND DRAINAGE DISTRICT

RESOLUTION LEVYING SPECIAL ASSESSMENT AND CERTIFICATE  
TO THE COUNTY AUDITOR OF WOODBURY COUNTY, IOWA

WHEREAS, the Woodbury County Board of Supervisors is the governing body of the Smithland Drainage District of Woodbury County, Iowa; and

WHEREAS, said Board, as Trustees, has determined that it is necessary to levy a special tax and/or assessment on all tracts of land, lots, railroad companies, and public highways within the boundaries of the said Drainage District.

NOW, THEREFORE, IT IS HEREBY RESOLVED by the Woodbury County Board of Supervisors as the governing body of the Smithland Drainage District, that a special tax and/or assessment in the sum of \$ 0.00 be levied against all the tracts of land, lots, railroad companies, and public highways within said Drainage District and same to be in the same ratio and upon the same classification as heretofore established, adopted and confirmed.

BE IT FURTHER RESOLVED that the said levy and/or assessment be and the same is hereby certified to the Woodbury County Auditor who is hereby directed to effect said levy and/or assessment against all of the said lands, etc., in the same ratio and upon the same classification as heretofore adopted, established and confirmed and enter same upon the tax list of Woodbury County for collection with the first half of the current year real estate taxes.

DATED this \_\_\_\_ day of \_\_\_\_ April \_\_\_\_, 2021.

WOODBURY COUNTY BOARD OF SUPERVISORS

ATTESTED:

BY: \_\_\_\_\_  
Chairman

\_\_\_\_\_  
Patrick F. Gill, County Auditor

\_\_\_\_\_  
\_\_\_\_\_  
\_\_\_\_\_

RESOLUTION NO. \_\_\_\_\_

WOLF CREEK PUMPING DISTRICT #2

RESOLUTION LEVYING SPECIAL ASSESSMENT AND CERTIFICATE  
TO THE COUNTY AUDITOR OF WOODBURY COUNTY, IOWA

WHEREAS, the Woodbury County Board of Supervisors is the governing body of the Wolf Creek Pumping District #2 of Woodbury County, Iowa; and

WHEREAS, said Board, as Trustees, has determined that it is necessary to levy a special tax and/or assessment on all tracts of land, lots, railroad companies, and public highways within the boundaries of the said Pumping District.

NOW, THEREFORE, IT IS HEREBY RESOLVED by the Woodbury County Board of Supervisors as the governing body of the Wolf Creek Pumping District #2, that a special tax and/or assessment in the sum of \$ 0.00 be levied against all the tracts of land, lots, railroad companies, and public highways within said Pumping District and same to be in the same ratio and upon the same classification as heretofore established, adopted and confirmed.

BE IT FURTHER RESOLVED that the said levy and/or assessment be and the same is hereby certified to the Woodbury County Auditor who is hereby directed to effect said levy and/or assessment against all of the said lands, etc., in the same ratio and upon the same classification as heretofore adopted, established and confirmed and enter same upon the tax list of Woodbury County for collection with the first half of the current year real estate taxes.

DATED this \_\_\_\_\_ day of April, 2021.

WOODBURY COUNTY BOARD OF SUPERVISORS

ATTESTED:

BY: \_\_\_\_\_  
Chairman

\_\_\_\_\_  
Patrick F. Gill, County Auditor

\_\_\_\_\_  
\_\_\_\_\_  
\_\_\_\_\_

RESOLUTION NO. \_\_\_\_\_

ANTHON CENTRAL DRAINAGE DISTRICT

RESOLUTION LEVYING SPECIAL ASSESSMENT AND CERTIFICATE  
TO THE COUNTY AUDITOR OF WOODBURY COUNTY, IOWA

WHEREAS, the Woodbury County Board of Supervisors is the governing body of the Anthon Central Drainage District of Woodbury County, Iowa; and

WHEREAS, said Board, as Trustees, has determined that it is necessary to levy a special tax and/or assessment on all tracts of land, lots, railroad companies and public highways within the boundaries of the said Drainage District.

NOW, THEREFORE, IT IS HEREBY RESOLVED by the Woodbury County Board of Supervisors as the governing body of the Anthon Central Drainage District, that a special tax and/or assessment in the sum of \$ 100.00 be levied against all the tracts of land, lots, railroad companies and public highways within said Drainage District, same to be in the same ratio and upon the same classification as heretofore established, adopted and confirmed.

BE IT FURTHER RESOLVED that the said levy and/or assessment be and the same is hereby certified to the Woodbury County Auditor who is hereby directed to effect said levy and/or assessment against all of the said lands, etc., in the same ratio and upon the same classification as heretofore adopted, established and confirmed and enter same upon the tax list of Woodbury County for collection with the first half of the current year real estate taxes.

DATED this \_\_\_\_\_ day of April, 2021.

WOODBURY COUNTY BOARD OF SUPERVISORS

ATTESTED:

BY: \_\_\_\_\_  
Chairman

\_\_\_\_\_  
Patrick F. Gill, County Auditor

\_\_\_\_\_  
\_\_\_\_\_  
\_\_\_\_\_

RESOLUTION NO. \_\_\_\_\_

MAPLE RIVER DRAINAGE DISTRICT

RESOLUTION LEVYING SPECIAL ASSESSMENT AND CERTIFICATE  
TO THE COUNTY AUDITOR OF WOODBURY COUNTY, IOWA

WHEREAS, the Woodbury County Board of Supervisors is the governing body of the Maple River Drainage District of Woodbury County, Iowa; and

WHEREAS, said Board, as Trustees, has determined that it is necessary to levy a special tax and/or assessment on all tracts of land, lots, railroad companies and public highways within the boundaries of the said Drainage District.

NOW, THEREFORE, IT IS HEREBY RESOLVED by the Woodbury County Board of Supervisors as the governing body of the Maple River Drainage District, that a special tax and/or assessment in the sum of \$ 0.00 be levied against all the tracts of land, lots, railroad companies and public highways within said Drainage District, same to be in the same ratio and upon the same classification as heretofore established, adopted and confirmed.

BE IT FURTHER RESOLVED that the said levy and/or assessment be and the same is hereby certified to the Woodbury County Auditor who is hereby directed to effect said levy and/or assessment against all of the said lands, etc., in the same ratio and upon the same classification as heretofore adopted, established and confirmed and enter same upon the tax list of Woodbury County for collection with the first half of the current year real estate taxes.

DATED this \_\_\_\_\_ day of \_\_\_\_\_ April, 2021.

WOODBURY COUNTY BOARD OF SUPERVISORS

ATTESTED:

BY: \_\_\_\_\_

Chairman

\_\_\_\_\_  
Patrick F. Gill, County Auditor

\_\_\_\_\_  
\_\_\_\_\_  
\_\_\_\_\_

**WOODBURY COUNTY BOARD OF SUPERVISORS AGENDA ITEM(S) REQUEST FORM**

Date: 4/21/2021 Weekly Agenda Date: 4/27/2021

**ELECTED OFFICIAL / DEPARTMENT HEAD / CITIZEN:** Mark J. Nahra, County Engineer

**WORDING FOR AGENDA ITEM:**

Approve contract for Embankment Repair and Debris Cleanup in the Wolf Creek Drainage District - Board to meet as Trustees

**ACTION REQUIRED:**

Approve Ordinance                       Approve Resolution                       Approve Motion   
Public Hearing                       Other: Informational                       Attachments

**EXECUTIVE SUMMARY:**

The Wolf Creek Drainage district suffered damage to its facilities during the March 2019 flood event. FEMA awarded funds to repair the damage. Contracts have been returned for Board approval.

**BACKGROUND:**

The Board of Supervisors acts as trustees for the Wolf Creek Drainage District. This project was developed to repair damage to the drainage district dikes and clean up debris deposited within the channel. The contracts are being presented for approval. No public hearing was required since the estimate cost to the drainage district is below the state code threshold value.

**FINANCIAL IMPACT:**

The project will be paid for with 75% FEMA funds, 10% IHSEMD funds, and 15% local drainage tax levies .

**IF THERE IS A CONTRACT INVOLVED IN THE AGENDA ITEM, HAS THE CONTRACT BEEN SUBMITTED AT LEAST ONE WEEK PRIOR AND ANSWERED WITH A REVIEW BY THE COUNTY ATTORNEY'S OFFICE?**

Yes                       No

**RECOMMENDATION:**

I recommend that the Board approve the contract for Wolf Creek Drainage District repairs.

**ACTION REQUIRED / PROPOSED MOTION:**

1) Motion to approve the contract for Wolf Creek Drainage District Repairs with Johnston Excavation for \$168,148.00.



**WOODBURY COUNTY, IOWA  
CONTRACT**

Kind of Work Erosion Repairs  
Project No. Wolf Creek Drainage District Repairs County Woodbury

THIS AGREEMENT made and entered by and between Woodbury County, Iowa, by its Board of Supervisors consisting of the following members: Rocky De Witt, Mathew Ung, Keith Radig, Justin Wright and Mark Monson Contracting Authority, and Johnston Excavating, Sloan, IA, Contractor.

WITNESSETH: That the Contractor, for and in consideration of \_\_\_\_\_  
One Hundred Sixty Eight Thousand One Hundred Forty Eight and 00/100 \_\_\_\_\_ (\$168,148.00)  
payable as set forth in the specifications constituting a part of this contract, hereby agrees to construct in accordance with the plans and specifications therefore, and in the locations designated in the notice to bidders, the various items of work as follows:

Item No.	Item	Quantity	Unit Price	Amount
Project: Wolf Creek Drainage District Repairs				
1.	Embankment-In-Place	3,432 C.Y.	\$19.75	\$ 67,782.00
2.	Removal of Debris	541 Ton	13.00	7,033.00
3.	Excavation Class 10 Channel	2205 C.Y.	14.00	30,870.00
4.	Revetment, Class E	1020 Ton	49.85	50,847.00
5.	Mobilization	1 L.S.	6,000.00	6,000.00
6.	Stabilizing Crop Seeding and Fertilizing	3.12 Acre	1,800.00	5,616.00
<b>TOTAL BID</b>				<b>\$168,148.00</b>

Said specifications and plans are hereby made part of and the basis of this agreement and a true copy of said plans and specifications are now on file in the office of the County Engineer under the date of March 15, 2021

That in consideration of the foregoing, the Contracting Authority hereby agrees to pay the Contractor, promptly and according to the requirements of the specifications the amounts set forth, subject to the conditions as set forth in the specifications.

That it is mutually understood and agreed by the parties hereto that the notice to bidders, the proposal, the specifications for Project No. Wolf Creek Drainage District Repairs in Woodbury County, Iowa, the within contract, the contractor's bond, and the general and detailed plans are and constitute the basis of contract between the parties hereto.

That it is further understood and agreed by the parties of this contract that the above work shall be commenced and completed on or before:

Approximate Starting Date	Specified Starting Date	Late Start Date	Number of Working Days
		June 14, 2021	45

That time is the essence of this contract and that said contract contains all of the terms and conditions agreed upon by the parties hereto.

It is further understood that the Contractor consents to the jurisdiction of the courts of Iowa to hear, determine, and render judgment as to any controversy arising hereunder.

IN WITNESS WHEREOF the parties hereto have set their hands for the purposes herein expressed to this and three other instruments of like tenor, as the

18<sup>th</sup> day of APRIL, 20 21  
Approved: \_\_\_\_\_  
By [Signature]  
Contractor: Johnston Excavating  
Date 4/18/21

By \_\_\_\_\_  
Contracting Authority: Woodbury County Board Chairperson  
Date \_\_\_\_\_



# RESOLUTION #

## NOTICE OF PROPERTY SALE

### Parcels #894720382013

**WHEREAS** Woodbury County, Iowa was the owner under a tax deed of a certain parcel of real estate described as:

**All that part of the west one-half (W ½) of the vacated east/west alley as it abuts Lot Ten (10), Block Thirty-Three (33), North Sioux City Addition, City of Sioux City, Woodbury County, Iowa  
(1510 Myrtle Street)**

**NOW THEREFORE,**

**BE IT RESOLVED** by the Board of Supervisors of Woodbury County, Iowa as follows:

1. That a public hearing on the aforesaid proposal shall be held on the **27<sup>th</sup> Day of April, 2021 at 4:35 o'clock p.m.** in the basement of the Woodbury County Courthouse.
2. That said Board proposes to sell the said parcel of real estate at a public auction to be held on the **27<sup>th</sup> Day of April, 2021**, immediately following the closing of the public hearing.
3. That said Board proposes to sell the said real estate to the highest bidder at or above a **total minimum bid of \$232.00** plus recording fees.
4. That this resolution, preceded by the caption "Notice of Property Sale" and except for this subparagraph 4 be published as notice of the aforesaid proposal, hearing and sale.

Dated this 13<sup>th</sup> Day of April, 2021.

ATTEST:

WOODBURY COUNTY BOARD OF SUPERVISORS

---

Patrick F. Gill  
Woodbury County Auditor  
and Recorder

---

Rocky L. De Witt, Chairman

REQUEST FOR MINIMUM BID

Name: Saul Leon Date: 9-9-20

Address: 1512 Myrtle St. S.C. IA 51103 Phone: 712-389-1377

Address or approximate address/location of property interested in:

1510 Myrtle

GIS PIN # 894720382013

*\*This portion to be completed by Board Administration \**

Legal Description:

North Sioux City PT of W&V Vac Elw alley abutting  
Lot 10 Block 33

Tax Sale #/Date: 813/2016 Parcel # \_\_\_\_\_

Tax Deeded to Woodbury County on: 3/22/2021

Current Assessed Value: Land 216 Building 0 Total 216

Approximate Delinquent Real Estate Taxes: \_\_\_\_\_

Approximate Delinquent Special Assessment Taxes: \_\_\_\_\_

Total \$901.00

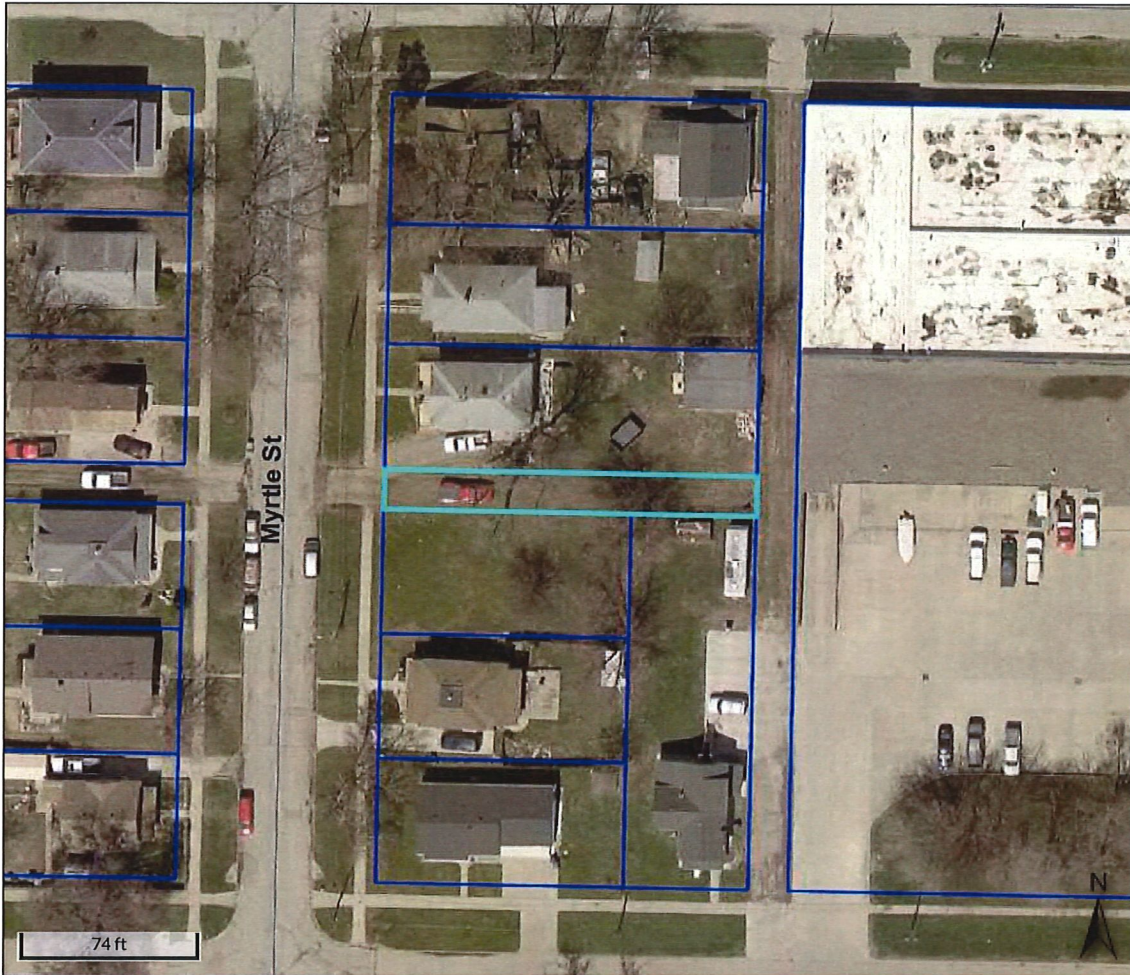
\*Cost of Services: \$130

Inspection to: Matthew Ung Date: 9-9-20

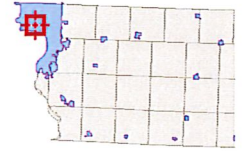
Minimum Bid Set by Supervisor: \$100 plus \$30 for cost of services  
Total: \$230

Date and Time Set for Auction: \_\_\_\_\_

\* Includes: Abstractors costs; Sheriff's costs; publishing costs; and mailing costs.



Overview



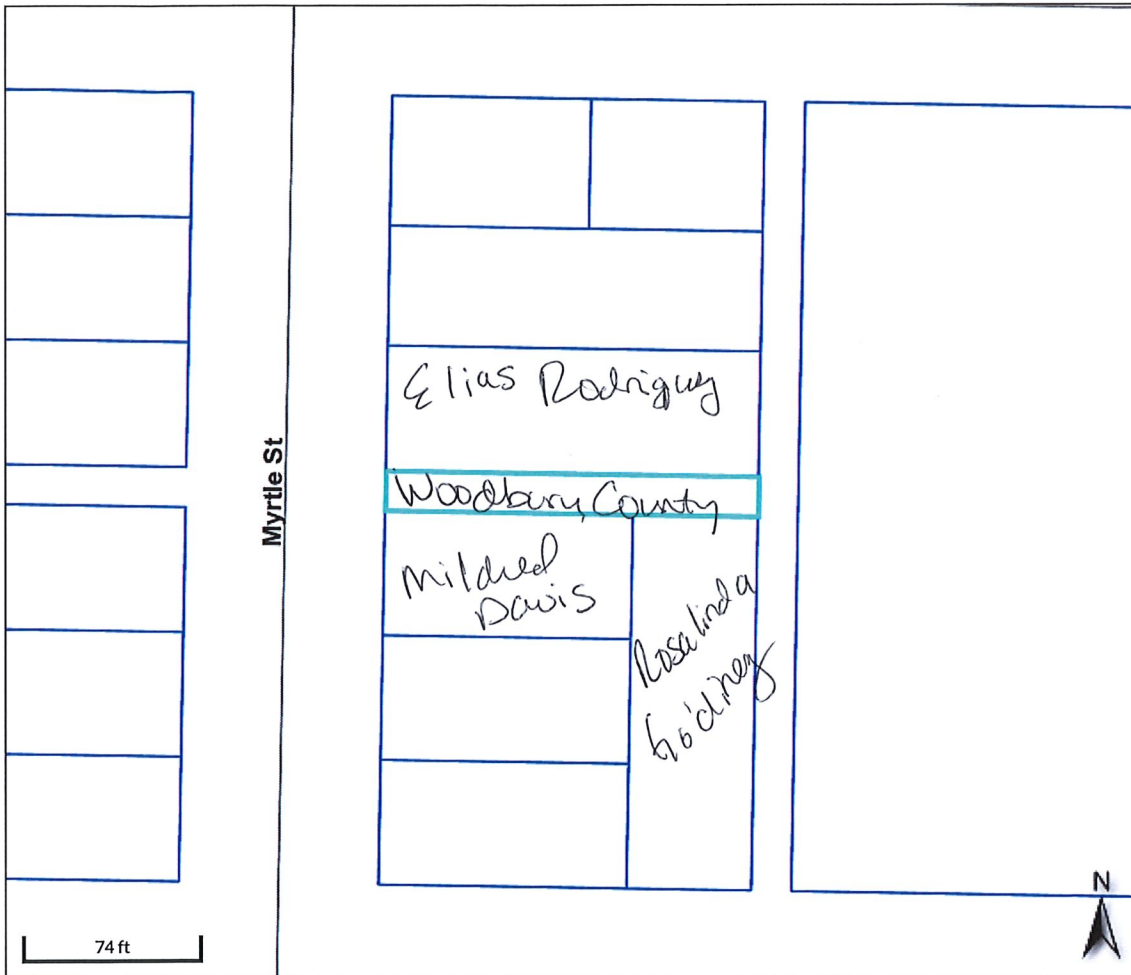
Legend

- Roads
- ▭ Corp Boundaries
- ▭ Townships
- ▭ Parcels

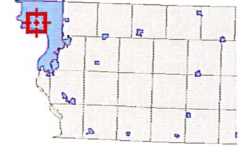
Parcel ID	894720382013	Alternate ID	57691	Owner Address	WOODBURY COUNTY
Sec/Twp/Rng	n/a	Class	R		620 DOUGLAS ST
Property Address	1510 MYRTLE ST	Acreage	n/a		SIOUX CITY, 51101
	SIOUX CITY				
District	0087				
Brief Tax Description	NORTH SIOUX CITY PT OF W 1/2 VAC E/W ALLEY ABUTTING LOT 10 BLK 33				
	<i>(Note: Not to be used on legal documents)</i>				

Date created: 4/8/2021  
 Last Data Uploaded: 4/7/2021 7:12:05 PM

Developed by  **Schneider**  
 GEOSPATIAL



Overview



Legend

- Roads
- Corp Boundaries
- Townships
- Parcels

Parcel ID	894720382013	Alternate ID	57691	Owner Address	WOODBURY COUNTY
Sec/Twp/Rng	n/a	Class	R		620 DOUGLAS ST
Property Address	1510 MYRTLE ST	Acreage	n/a		SIOUX CITY, 51101
	SIOUX CITY				
District	0087				
Brief Tax Description	NORTH SIOUX CITY PT OF W 1/2 VAC E/W ALLEY ABUTTING LOT 10 BLK 33				
	<i>(Note: Not to be used on legal documents)</i>				

Date created: 4/8/2021  
 Last Data Uploaded: 4/7/2021 7:12:05 PM

Developed by  Schneider  
 GEOSPATIAL

## Woodbury County Nonprofit Funding Request

Organization Name: Siouxland Mental Health Center

Are you a registered not-for-profit organization? Yes  No

Organization Mailing Address: P.O. Box 1917, Sioux City, IA 51102-1917

Program or Project Name: Mildred W. Anderson Estate Funds

Contact Person: Sherla L. Martin

Title: CEO

Telephone: 712-204-2023 E-Mail smartin@siouxlandmentalhealth.com

Dollar Amount Requested: \$36,788.82 County Fiscal Year 2021

Total Program/project Cost: \$36,788.82

Will County funding be leveraged with matching funds from another source? Yes  No

Summary of Funding Request and Project Goals and Objectives: \_\_\_\_\_

Please see attachment  
\_\_\_\_\_  
\_\_\_\_\_  
\_\_\_\_\_  
\_\_\_\_\_

Describe the Public Purpose(s) that will be served by the funding: \_\_\_\_\_

Please see attachment  
\_\_\_\_\_  
\_\_\_\_\_  
\_\_\_\_\_  
\_\_\_\_\_

Provide an Itemized Program/Project Budget Showing How the Funds will be expended: \_\_\_\_\_

Please see attachment  
\_\_\_\_\_  
\_\_\_\_\_  
\_\_\_\_\_  
\_\_\_\_\_

\*\*\*Attach additional pages if needed to fully answer any of the questions on this application\*\*\*

## ASSURANCES FOR WOODBURY COUNTY FUNDING

This signed page must accompany your funding request

The applicant hereby agrees and acknowledges that:

- (1) If awarded funds, the applicant will conduct operations in accordance with Title VI and the Civil Rights Act of 1964, as amended, and the Rehabilitation Act of 1973, as amended, which prohibits discrimination against any employee, applicant for employment, or any person participating in a sponsored program on the basis of race, creed, color, national origin, religion, sex, age, sexual orientation, or physical or mental disability, and require compensation for employment at no less than the minimum wage requirements and will provide safe and sanitary working conditions;
- (2) The applicant will expend funds received from Woodbury County solely for public purposes on the program or project described in the funding request;
- (3) All unexpended funds received pursuant to this request shall be returned to Woodbury County;
- (4) This funding request and assurances document has been approved by the legally authorized governing body of the applicant, if applicable;
- (5) The facts, figures, and information contained in this funding request, including all attachments, are true and correct;
- (6) Failure to comply with the rules for this program and this assurances agreement will result in the penalty of funding forfeiture and funds received during the applicable fiscal year shall be returned to Woodbury County;
- (7) At any time, the Board of Supervisors may require a representative from your organization to attend a public meeting to report progress toward completion of your program or project; and
- (8) Applicant shall quarterly, and at other times upon request by Woodbury County, provide an accounting of all expenditures of Woodbury County funds and further provide any other documentation deemed necessary by Woodbury County to provide oversight for the funding. Failure to timely comply with the provisions of this paragraph will result in suspension of funding.

Siouxland Mental Health Center  
Name of Organization

[Signature]      4/19/21  
Signature of Board President      Date

Sheila Y. Maub      4-19-21  
Signature of Executive Director (if applicable)      Date

---

March 10, 2021

Siouxland Mental Health Center  
PO Box 1917  
Sioux City, IA 51102-1917

Dear Woodbury County Supervisors,

Siouxland Mental Health Center (SMHC) is requesting funds from Mildred W. Anderson Estate. SMHC is a nonprofit community mental health center that provides a comprehensive range of mental health services for the evaluation and treatment of people of all ages experiencing mental illness, individual or family emotional distress, and overwhelmingly stressful circumstances. Located in Sioux City, Iowa, SMHC is the designated community mental health center for Woodbury County.

SMHC was founded in 1969 to address the unmet mental health needs in the community. This includes populations most affected by access barriers such as low income, uninsured, underinsured, and underserved. While these populations remain a priority, SMHC continues to serve its mission to provide a difference in the lives of individuals and families affected by mental illness and emotional distress. SMHC currently averages 150 new patients each month, serves over 6,500 patients each year, and performs over 85,000 encounters each year.

SMHC is requesting the use of these funds for the following based on criteria for comfort and cheer for patients:

- **Assist with activities at Friendship House/Peer Drop in Center.** Friendship House offers people with mental illness an opportunity to socialize in a setting that is not treatment oriented, while offering the opportunity for learning and problem-solving to occur with the assistance of staff or members. The program was created in 1981 in response to the needs of the people of Woodbury County. Since that time, Friendship House has authorized membership to more than 1,700 people. Approximately 100 people utilize Friendship House each month, with an average of 40 members visiting each day. Request amount of \$6,788.82.

Mildred Anderson had visions of bringing comfort and care to mental health patients, there are so many possibilities to bring her visions into reality today. These would involve community involvement, increasing physical activity, and being involved in outdoor opportunities. Friendship House would expand the ability to increase community involvement among our members by exploring community organizations. Many places, which due to budgets, or also being non-profit, are not able to provide free admittance. Friendship House members would be able to visit the Railroad Museum, Bandits Football, Musketeer Hockey, along with Community and Lamb Theaters. We would also expand our options by looking beyond the Siouxland area to visit places such as the Butterfly House and Aquarium in Sioux Falls, or Ashfall Fossil Beds State Historical Park in Nebraska. Increasing regularly scheduled opportunities for physical activity

Date	Activity	Price	Per Person	Total
Apr-21	Bowling & Shoe Rental	\$ 5.50	10	\$ 55.00
Apr-21	Craft Kits and Supplies	\$ 200.00		\$ 200.00
May-21	YMCA Day Outing	\$ 10.00	10	\$ 100.00
	Massage (5-10 minute chair. on site. charge per hour NOT			
May-21	per person)	\$ 60.00	5	\$ 300.00
	Relaxation Room -			\$ -
	*kinetic sand, light therapy lamp, bean bag chair, yoga			
	mat, relaxation CD's			\$ 890.00
Jun-21	Sioux Falls Zoo & Butterfly House Day Trip			\$ -
	*Van Rental & Gas	\$ 467.82		\$ 467.82
	*Zoo	\$ 14.00	28	\$ 392.00
	*Butterfly House	\$ 12.00	28	\$ 336.00
	*Lunch	\$ 11.00	28	\$ 308.00
Jun-21	Bowling & Shoe Rental	\$ 5.50	10	\$ 55.00
Jul-21	Pickled Pallet - Canvas Paint Lesson	\$ 35.00	10	\$ 350.00
Jul-21	Sioux City Community Theater	\$ 18.00	10	\$ 180.00
Aug-21	YMCA Day Outing	\$ 10.00	10	\$ 100.00
Aug-21	Cook out for Anniversary with catered lunch			\$ 750.00
Aug-21	New Logo t-Shirts 40th Anniversary	\$ 12.00	50	\$ 600.00
Sep-21	Bowling & Shoe Rental	\$ 5.50	10	\$ 55.00
Sep-21	Rail Road Museum	\$ 10.00	10	\$ 100.00
Sep-21	Camp High Hopes Day Outing			\$ 400.00
Oct-21	YMCA Day Outing	\$ 10.00	10	\$ 100.00
Oct-21	Pickled Pallet - Ceramics Painting	\$ 20.00	10	\$ 200.00
Nov-21	Bowling & Shoe Rental	\$ 5.50	10	\$ 55.00
Nov-21	SC Musketeers	\$ 14.50	10	\$ 145.00
	Massage (5-10 minute chair. on site. charge per hour NOT			
Nov-21	per person)	\$ 60.00	5	\$ 300.00
Dec-21	Mid American Air Museum	\$ 10.00	10	\$ 100.00
Dec-21	YMCA Day Outing	\$ 10.00	10	\$ 100.00
Dec-21	SC Musketeers	\$ 15.00	10	\$ 150.00

\$ 6,788.82



---

would be created both in the community by going to the YMCA and Camp High Hopes, and also at Friendship House with bringing in a weekly yoga class. Throughout the summer we would plan a picnic with a meal provided, and grow our current gardening space by adding another raised box.

- **Outdoor Therapeutic Sensory Equipment.** Siouxland Mental Health Center will use the funds to purchase outdoor therapeutic sensory equipment. This is an innovative way to improve the lives of the children and adults we serve. The equipment will be used by the mental health therapists in individual/group therapy settings to help the clients build self-esteem, self-confidence, crucial learning and coping skills, and physical stimulation while also bringing comfort and cheer to them as they work to decrease the symptoms associated with their particular diagnoses (i.e. Depression, Anxiety, Attention Deficit Hyperactivity Disorder, Posttraumatic Stress Disorder, etc.).

This program also will help with cultural/language barriers as some of the equipment is musically oriented which knows no boundaries and typically brings joy and cheer to those that hear it. The therapeutic equipment will also include an easel for art therapy, and a sandbox and a labyrinth panel for creative play. As this therapeutic modality will be located behind the Court Street building, this will help to minimize the risk of Covid-19 for clients and staff due to being outdoors as well as following other CDC recommendations to minimize the risk of exposure to the virus. Total request amount is **\$30,000.00.**

We are requesting these funds to start on April 1<sup>st</sup>, 2021. Reconciliation of all reimbursements will be submitted to the County on a quarterly basis for payment. We understand that there is a total amount of \$36,788.82 and would request usage of these funds for a one year time frame, expiring on April 1<sup>st</sup>, 2022. Thank you for your consideration.

Respectfully,

*Sheila L. Martin, LISW*

Sheila L. Martin, CEO  
Chief Executive Officer

# AMERICAN PARKS ★ COMPANY

ACCOUNT REPRESENTATIVE  
Sandy Hutchinson

TOLL FREE:  
(800) 381-4491

EMAIL:  
sandy@americanparkscompany.com

FAX:  
(888) 934-6441

QUOTE NAME:  
SMHC-Sensory Playground  
Project-For Grant Approval -  
2021

QUOTE NUMBER:  
122015150

CREATED DATE:  
12/08/2020 12:30 PM

EXPIRATION DATE:  
May 31,2021

**PREPARED FOR**

ORGANIZATION:  
SMHC: Mental Health Well  
Being of Children

PRIMARY CONTACT:  
Nancy Thieman

Billing and Shipping:  
*Is This Correct?*

CONTACT:  
SMHC: Mental Health Well  
Being of Children

SHIP TO:  
SMHC: Mental Health Well  
Being of Children

PHONE:  
(712) 244-5115

EMAIL:  
nthieman@siouxlandmentalhealth.com

BILLING ADDRESS:  
625 Court St  
Sioux City, IA 51101  
United States

SHIP TO ADDRESS:  
625 Court St  
Sioux City, IA 51101  
United States

**COMMENTS AND SPECIAL INSTRUCTIONS**

Shipping in 5-6 weeks. Price quoted for material cost and installation. Price Excludes: sitework, underground line location, permits, lift gates & impact fees. Customer is responsible for any taxes that may apply. Site must be clear, level and accessible at time of installation. If rock, concrete or any obstacle is found during installation, additional charges may apply. Specific insurance and/or vendor registration requirements may result in additional fees. If order is cancelled a 25% restocking fee may be assessed.

Product	Description	Product Code	Quantity	List Price	Sales Price	Total Price
Custom Shade Structure	Hanging Cantilever hip shade, 24' x 14' with 8' eave height. Footers 3.61 length and width, 3 depth. With Glide Elbow. Color posts: blue, color fabric: true blue	CUSTSHADE_	1.00	\$ 0.00	\$ 6,248.00	\$ 6,248.00
Miscellaneous	Steel Surcharge for shade structure	MISC	1.00	\$ 0.00	\$ 241.00	\$ 241.00
LILYPAD CYMBALS - In Ground - Recycled Post	10 note aluminum discs, 3 mallets, 1 brown recycled plastic post for in-ground install., Color: primary	LPAD-IG-REC	1.00	\$ 3,311.00	\$ 3,311.00	\$ 3,311.00
Labyrinth Panel	Age Range: 2-5 years, Use Zone: 0'7" x 4'6", Weight: 95 lbs, color: primary	MEC-118	1.00	\$ 1,533.00	\$ 1,533.00	\$ 1,533.00
Freenotes Deluxe Recycled Inground Ensemble Collection	Includes: Swirl, Imbarimba, Yantzee, and Tuned Drums, with recycled posts for in-ground mount, Color: primary	Freenotes Deluxe Ensemble IG-REC	1.00	\$ 18,320.00	\$ 18,320.00	\$ 18,320.00
PAINT 'N PLAY DOUBLE SIDED (Metal/Plastic)	Inground. Color posts: Primary	MEC-117-A	1.00	\$ 1,843.00	\$ 1,810.00	\$ 1,810.00

# AMERICAN PARKS ★ COMPANY

ACCOUNT REPRESENTATIVE  
Sandy Hutchinson

TOLL FREE:  
(800) 381-4491

EMAIL:  
sandy@americanparkscountry.com

FAX:  
(888) 934-6441

Product	Description	Product Code	Quantity	List Price	Sales Price	Total Price
Poured in Place	600 sf of Poured Rubber w/substrate - materials & installation. Color: 50/50% - black & std. color, blue/black (approx. 17' x 32')	PIP	1.00	\$ 0.00	\$ 12,770.00	\$ 12,770.00
Professional Installation	APC Professional Installation of Deluxe Collection (freenotes), and Paint n Play, Lilypad Cymbals, Labyrinth Panel. Also, installation of cantilever umbrella, footer Based on flat ground, inground mounting equipment, and availability access to water, electric and a dumpster for packaging debris. Also, based on easy site access to use a "bobcat" on and off the site.	INSTALL	1.00	\$ 0.00	\$ 6,430.00	\$ 6,430.00
DISCOUNTSHIPPING	Preferred customer discount	DSCNTShipping	1.00	\$ 0.00	\$ -2,500.00	\$ -2,500.00

SUBTOTAL \$ 48,163.00  
SHIPPING AND HANDLING \$ 3,151.00  
TAX \$ 0.00

**GRAND TOTAL \$51,314.00**

**WOODBURY COUNTY BOARD OF SUPERVISORS AGENDA ITEM(S) REQUEST FORM**

Date: 4/23/2021 Weekly Agenda Date: 4/27/2021

**ELECTED OFFICIAL / DEPARTMENT HEAD / CITIZEN:** Rocky De Witt - Chairman

**WORDING FOR AGENDA ITEM:**

Approval of number of appointees for redistricting & reprecincting

**ACTION REQUIRED:**

Approve Ordinance

Approve Resolution

Approve Motion

Public Hearing

Other: Informational

Attachments

**EXECUTIVE SUMMARY:**

Due to the 2020 census results, it is likely there will be a need to redraw district & precinct maps.

**BACKGROUND:**

**FINANCIAL IMPACT:**

None

**IF THERE IS A CONTRACT INVOLVED IN THE AGENDA ITEM, HAS THE CONTRACT BEEN SUBMITTED AT LEAST ONE WEEK PRIOR AND ANSWERED WITH A REVIEW BY THE COUNTY ATTORNEY'S OFFICE?**

Yes  No

**RECOMMENDATION:**

Approve motion to approve number of appointees for redistricting & reprecincting

**ACTION REQUIRED / PROPOSED MOTION:**

Approve motion to approve number of appointees for redistricting & reprecincting