

**RESOLUTION APPROVING THE CITY OF SIOUX CITY'S FY 2024 REQUEST TO THE IOWA DEPARTMENT OF TRANSPORTATION AND THE FEDERAL HIGHWAY ADMINISTRATION TO REVISE THE FEDERAL FUNCTIONAL CLASSIFICATION MAP.**

**RESOLUTION NO. 13702**

**WHEREAS**, Federal Functional Classification is the process by which streets and highways are grouped into classes according to the character of service they are intended to provide; and

**WHEREAS**, these Classifications include Interstate, Other Principal Arterial, Minor Arterial, Collector, and Local streets; and

**WHEREAS**, Woodbury County and the City of Sioux City periodically reviews the system of streets and highways for appropriate changes to classification of the various segments of the system; and

**WHEREAS**, a recent review of the system has revealed the need for a change to the Federal Functional Classification Map of road segments due to changes in traffic flow and existing and planned roadway infrastructure in Sioux City.

**NOW, THEREFORE, BE IT RESOLVED BY THE WOODBURYCOUNTY BOARD OF SUPERVISORS**, that Woodbury County hereby requests the Iowa Department of Transportation to request the Federal Highway Administration to make the following changes to the Federal Functional Classification Map:

Map Number	Street	From	To	Street Length	Current Classification	New Classification
Woodbury County						
51	Glen Ellen Road	Whispering Creek Drive	Gordon Drive	1730	N/A	Collector
52	Buchanan Avenue	Gordon Drive	Correctionville Road	7500	Local	Collector
53	155th Street	Buchanan Avenue	Stone Avenue	6050	Local	Collector

  
Matthew Ung, Chair

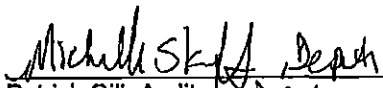
  
Daniel A. Blittinger II, Member

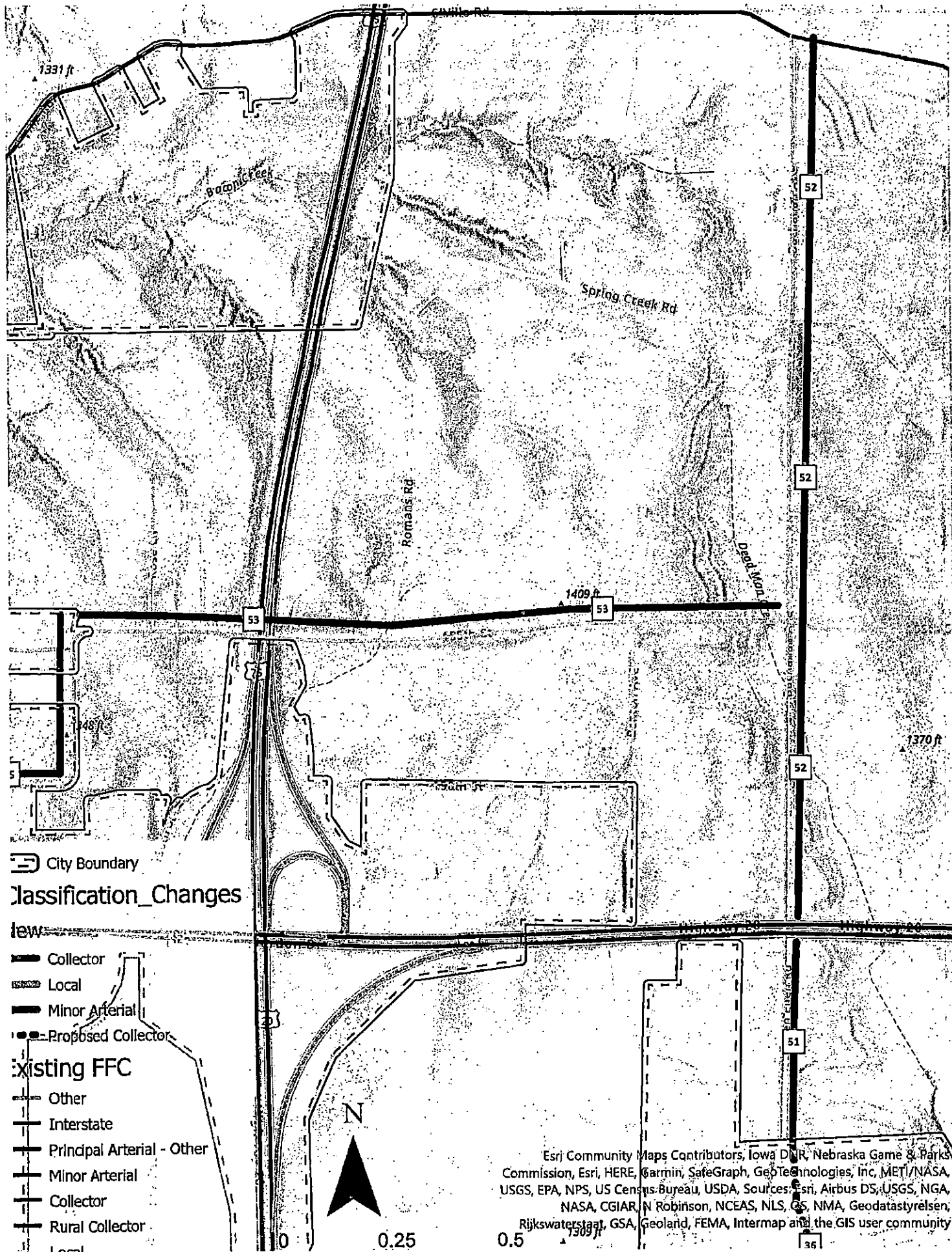
  
Mark Nelson, Member

  
Keith Radig, Member

  
Jeremy Taylor, Member

Attest:

  
Michelle Skoff, Deputy  
Patrick Gilt, Auditor  
Michelle K. Skoff



**Classification\_Changes**

- Collector
- Local
- Minor Arterial
- Proposed Collector

- Existing FFC**
- Other
  - Interstate
  - Principal Arterial - Other
  - Minor Arterial
  - Collector
  - Rural Collector
  - Local

Esri Community Maps Contributors, Iowa DNR, Nebraska Game & Parks Commission, Esri, HERE, Garmin, SafeGraph, GeoTechnologies, Inc, METI/NASA, USGS, EPA, NPS, US Census Bureau, USDA, Sources: Esri, Airbus DS, USGS, NGA, NASA, CGIAR, N Robinson, NCEAS, NLS, GSA, NMA, Geodatastyrelsen, Rijkswaterstaat, GSA, Geoland, FEMA, Intermap and the GIS user community