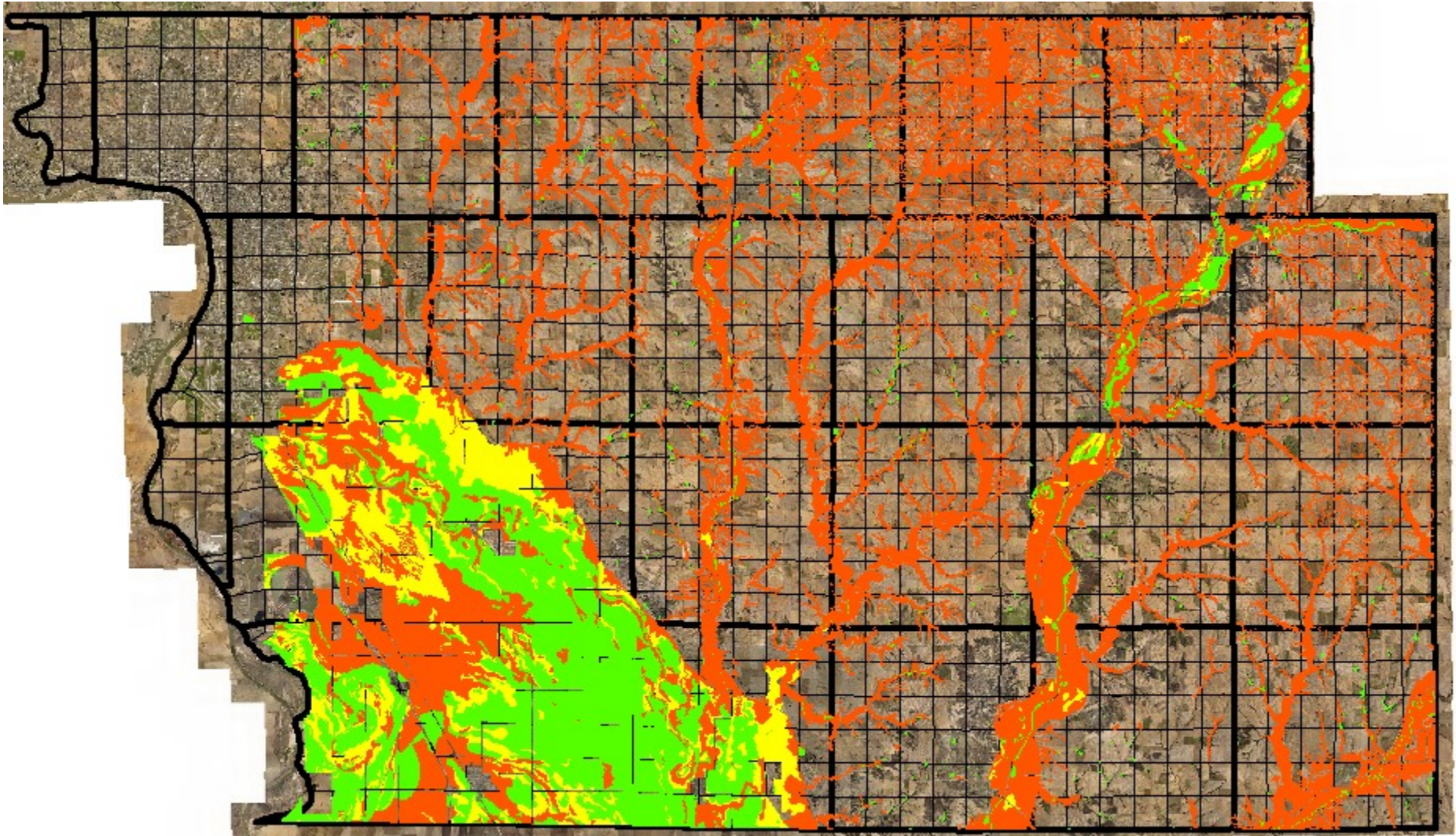


AP Zoned Area in

- 5 or less slope 363,124 acres (red)
- 5 or less slope and CSR2 \leq 75 138,991 acres (yellow)
- 5 or less slope and CSR2 \leq 65 122,556 acres (green)



ACRES IN EACH ZONING DISTRICT

- Agricultural Preservation (AP) 476,513 acres
- Agricultural Estates (AE) 7,556 acres
- General Industrial (GI) 11,221 acres
- Limited Industrial (LI) 101 acres
- General Commercial (GC) 2,032 acres
- Suburban Residential (SR) 623 acres