

A G E N D A

WOODBURY COUNTY BOARD OF SUPERVISORS

TUESDAY, SEPTEMBER 16, 2014

ITEMS OF BUSINESS

- 10:00 a.m.** 1. Call Meeting to Order, Approval of Minutes of the September 9, 2014, Meeting
- 10:01 a.m.** 2. Discussion and Approval of Claims
- 10:02 a.m.** 3. Human Resources – Ed Gilliland
- a. Approval of Memorandum of Personnel Transactions
 - b. United Way, Discussion and Action
 - c. Employee Flu Shots, Discussion and Action
- 10:05 a.m.** 4. Presentation of Resolution Thanking and Commending William L. Anderson for Years of Service
- 10:10 a.m.** 5. Approval of Two Resolutions Thanking and Commending Years of Service
- 10:11 a.m.** 6. County Auditor – Patrick Gill
Re: Receive a Council appointment for the City of Bronson
- 10:12 a.m.** 7. Approval of Resolution for Tax Abatement for Faith Christian Reform Church
- 10:13 a.m.** 8. Board Administration – Dennis Butler
- a. Investing in Woodbury County Loan Program – Release of Mortgage, Discussion and Action
 - b. Investing in Woodbury County Loan Program – Filing of UCC3 to Iowa Secretary of State, Discussion and Action
- 10:18 a.m.** 9. Juvenile Detention – Mark Olsen
Re: Discussion and Approval of the Proposed Detention Daily Rate Increase
- 10:23 a.m.** 10. Planning/Zoning – John Pylelo
Re: Resolution Accepting and Approving the Final Platting for Fauth Addition (a Minor Subdivision) and Authorizing Chairman's Signature
- 10:26 a.m.** 11. Secondary Roads – Mark Nahra
- a. Receive and Consider Quotation for a Hydraulic Excavator Submitted, But Not Opened Last Week
 - b. Consider Approval of a Permit for Utilities in the Right of Way for the Schaller Telephone
 - c. Consider Approval of Plans for 240th Street Extension Project L-G-240 ST(2014)—73-97
 - d. Consider Approval of Plans for Grading Project to Replace Bridge P6 (Special Bridge Levy Project)
 - e. Consider Approval of Completion Certificate for Pavement Marking 2014 Contract

A G E N D A

WOODBURY COUNTY BOARD OF SUPERVISORS

TUESDAY, SEPTEMBER 16, 2014

- 10:31 a.m. 12. Discussion on agreement with US Attorney's Office regarding Special Assistant US Attorney for Drug Prosecutions
- 10:36 a.m. 13. Hearing of any Individual/Group to Make a Presentation of Item(s) Not On the Agenda And Supervisors' Concerns
- 10:41 a.m. 14. Closed Session {Iowa Code 21.5 (1) (c)}

ADJOURNMENT

Subject to Additions/Deletions

CALENDAR OF EVENTS

- | | | |
|---------------------|------------|---|
| TUESDAY, SEPT. 16 | 4:30 p.m. | Community Action Agency of Siouxland Board Meeting, 2700 Leech Avenue |
| WEDNESDAY, SEPT. 17 | 12:00 noon | Siouxland Economic Development Corporation Meeting, Marina Inn |
| THURSDAY, SEPT. 18 | 11:00 a.m. | Siouxland Regional Transit Systems (SRTS) Board Meeting, SIMPCO Office, 1122 Pierce St., Sioux City, Iowa |
| | 7:30 p.m. | Fair Board Meeting, Woodbury County Fair Office, Fairgrounds, Merville, Iowa. |
| TUESDAY, SEPT. 23 | 2:00 p.m. | Decat Board Meeting, Western Hills AEA, Room F |
| WEDNESDAY, OCT. 1 | 12:00 noon | District Board of Health Meeting, 1014 Nebraska St. |
| THURSDAY, OCT. 2 | 5:00 p.m. | Conservation Board Meeting, Dorothy Pecaut Nature Center, Stone |
| MONDAY, OCT. 6 | 6:00 p.m. | Board of Adjustment meeting, Board of Supervisors' Chambers |
| TUESDAY, OCT. 7 | 4:00 p.m. | Veteran Affairs Meeting, Veteran Affairs Office, 1211 Tri-View Ave. |
| WEDNESDAY, OCT. 8 | 8:05 a.m. | Woodbury County Information Communication Commission, Board of Supervisors' Chambers |
| THURSDAY, OCT. 9 | 7:00 p.m. | Siouxland Mental Health Center, Board Meeting, 625 Court Street |
| | 12:00 p.m. | SIMPCO Board of Directors, 1122 Pierce St, Sioux City, Iowa |
| TUESDAY, OCT. 14 | 10:00 a.m. | Senior Center Board of Directors Meeting, 313 Cook Street |

Woodbury County is an Equal Opportunity Employer. In compliance with the Americans with Disabilities Act, the County will consider reasonable accommodations for qualified individuals with disabilities and encourages prospective employees and incumbents to discuss potential accommodations with the Employer.

Federal and state laws prohibit employment and/or public accommodation discrimination on the basis of age, color, creed, disability, gender identity, national origin, pregnancy, race, religion, sex, sexual orientation or veteran's status. If you believe you have been discriminated against, please contact the Iowa Civil Rights Commission at 800-457-4416 or Iowa Department of Transportation's civil rights coordinator. If you need accommodations because of a disability to access the Iowa Department of Transportation's services, contact the agency's affirmative action officer at 800-262-0003.

SEPTEMBER 9, 2014 — THIRTYSEVENTH MEETING OF THE WOODBURY COUNTY BOARD OF SUPERVISORS

The Board of Supervisors met on Tuesday, September 9, 2014 at 10:00 a.m. Board members present were Clausen, Smith, Boykin, Tripp and Monson. Staff members present were Karen James, Board Administrative Coordinator, Dennis Butler, Finance/Operations Controller, Joshua Widman, Assistant County Attorney, and Patrick Gill, Auditor/Clerk to the Board.

1. The meeting was called to order.

Motion by Clausen second by Monson to approve the minutes of the 09/02/2014 Board meeting. Carried 4-0; Tripp abstained. Copy filed.

2. Motion by Monson second by Tripp to approve the County's claims totaling \$388,463.23. Carried 5-0. Copy filed.

- 3a. Motion by Tripp second by Monson to approve the promotion of Michael Lenz, Sheriff Deputy, County Sheriff Dept., effective 09/02/14, \$21.12/hour, 23%=\$3.98/hr. From Civilian Jailer, 3rd Class to Sheriff Deputy, 2nd Class.; the separation of Joshua Hedum, Civilian Jailer, County Sheriff Dept., effective 09/05/14. Resignation.; the separation of Franklin Wigand, Equipment Operator, Secondary Roads Dept., effective 09/26/14. Retirement.; and the separation of Danny McCoy, Equipment Operator, Secondary Roads Dept., effective 10/06/14. Retirement. Carried 5-0. Copy filed.

- 3b. Motion by Monson second by Clausen to approve and authorize the Chairperson to sign an "Authorization to Initiate Hiring Process" for Civilian Jailer – (2) positions, County Sheriff Dept., CWA Civilian Officers: \$17.14/hour and for Equipment Operator, Secondary Roads Dept., CWA Secondary Roads: \$20.71/hour. Carried 5-0. Copy filed.

- 3c. Motion by Tripp second by Clausen to approve the request from Danny McCoy's spouse to remain on County Health Insurance Plan. Carried 5-0. Copy filed.

- 3d. Motion by Smith second by Tripp to approve designating Friday, December 26, 2014 as the floating Christmas Holiday date for Wage Plan employee. Carried 5-0. Copy filed.

- 3e. Motion by Smith second by Clausen to approve to working towards Woodbury County becoming a Blue Zone Designated Work Site. Carried 5-0. Copy filed.

- 6a. A public hearing was held at 10:15 a.m. for the sale of property parcel #004755 (117 Sioux St., Unit A).

Then the Chairperson called on anyone wishing to be heard.

Motion by Tripp second by Monson to close the public hearing. Carried 5-0.

Motion by Clausen second by Monson to approve and authorize the Chairperson to sign a Resolution for the sale of this parcel to Viking Education Services (P.O. Box 1111, Sioux City, IA) for real estate parcel #004755 (117 Sioux St., Unit A) for \$319.00 plus recording fees. Carried 5-0.

**RESOLUTION OF THE BOARD OF SUPERVISORS
OF WOODBURY COUNTY, IOWA
RESOLUTION #12,072**

BE IT RESOLVED by the Board of Supervisors of Woodbury County, Iowa, that the offer at public auction of:

By Viking Education Services in the sum of Three Hundred Nineteen Dollars & 00/100 (\$319.00)-----
-----dollars.

For the following described real estate, To Wit:

Parcel #004755

**The Westerly 49 feet of the Easterly 116 feet of Lot 17 in Block 18 Sioux City Addition in the County of Woodbury and State of Iowa
(117 Sioux Street Unit A)**

Now and included in and forming a part of the City of Sioux City, Iowa, the same is hereby accepted: said Amount being a sum LESS than the amount of the general taxes, interests, costs and penalties against the said Real Estate.

BE IT RESOLVED that payment is due by close of business on the day of passage of this resolution or this sale is null and void and this resolution shall be rescinded.

BE IT RESOLVED that per Code of Iowa Section 569.8(3 & 4), a parcel the County holds by tax deed shall not be assessed or taxed until transferred and upon transfer of a parcel so acquired gives the purchaser free title as to previously levied or set taxes. Therefore, the County Treasurer is requested to abate any taxes previously levied or set on this parcel(s).

BE IT FURTHER RESOLVED that the Chairman of this Board be and he is hereby authorized to execute a Quit Claim Deed for the said premises to the said purchaser.

SO DATED this 9th Day of September, 2014.
WOODBURY COUNTY BOARD OF SUPERVISORS
Copy filed.

6b. A public hearing was held at 10:17 a.m. for the sale of property parcel #004740 (117 Sioux St., Unit B).

Then the Chairperson called on anyone wishing to be heard.

Motion by Clausen second by Tripp to close the public hearing. Carried 5-0.

Motion by Clausen second by Tripp to approve and authorize the Chairperson to sign a Resolution for the sale of this parcel to Viking Education Services (P.O. Box 1111, Sioux City, IA) for real estate parcel #004740 (117 Sioux St., Unit B) for \$200.00 plus recording fees. Carried 5-0.

**RESOLUTION OF THE BOARD OF SUPERVISORS
OF WOODBURY COUNTY, IOWA
RESOLUTION #12,073**

BE IT RESOLVED by the Board of Supervisors of Woodbury County, Iowa, that the offer at public auction of:

By Viking Education Services in the sum of **Two Hundred Dollars & 00/100 (\$200.00)**-----
-----dollars.

For the following described real estate, To Wit:

Parcel #004740
Except 116 feet Lot 17, Block 18, Sioux City Addition , City of Sioux City, Woodbury County, Iowa
(117 Sioux Street Unit B)

Now and included in and forming a part of the City of Sioux City, Iowa, the same is hereby accepted: said Amount being a sum LESS than the amount of the general taxes, interests, costs and penalties against the said Real Estate.

BE IT RESOLVED that payment is due by close of business on the day of passage of this resolution or this sale is null and void and this resolution shall be rescinded.

BE IT RESOLVED that per Code of Iowa Section 569.8(3 & 4), a parcel the County holds by tax deed shall not be assessed or taxed until transferred and upon transfer of a parcel so acquired gives the purchaser free title as to previously levied or set taxes. Therefore, the County Treasurer is requested to abate any taxes previously levied or set on this parcel(s).

BE IT FURTHER RESOLVED that the Chairman of this Board be and he is hereby authorized to execute a Quit Claim Deed for the said premises to the said purchaser.

SO DATED this 9th Day of September, 2014.

WOODBURY COUNTY BOARD OF SUPERVISORS

Copy filed.

4. Motion by Monson second by Tripp to approve funding for Siouxland Paramedic Inc. from reserves. Carried 5-0. Copy filed.

5a. Motion by Monson second by Tripp to receive bids for a Hydraulic Excavator and to refer them to the County Engineer for review and recommendation. Carried 5-0.

The bids are as follows:

Sheehan Mack Sales & Equipment, Inc., Sioux Falls, SD	\$233,470.00
Ziegler Caterpillar, Sioux City, IA	\$263,315.00
Murphy Tractor & Equipment, Sioux City, IA	\$246,900.00
Murphy Tractor & Equipment, Sioux City, IA	\$193,200.00

Copy filed.

5b. Motion by Tripp second by Monson to approve and authorize the Chairperson to sign a permit for use of County Road/Highway Right of Way for overhead and/or buried utilities for the MidAmerican Energy. Carried 5-0. Copy filed.

6c. Motion by Monson second by Tripp to approve and authorize the Chairperson to sign a Resolution setting the public hearing and sale date for parcel #264990, 2005 W. Palmer Ave, Sioux City. Carried 5-0.

**RESOLUTION #12,074
NOTICE OF PROPERTY SALE**

WHEREAS Woodbury County, Iowa was the owner under a tax deed of a certain parcel of real estate described as:

The East 56 ft. of Lot 9, Block 32, Hornicks 3rd Addition situated in the County of Woodbury in the State of Iowa (2005 W. Palmer Ave.)

NOW THEREFORE,

BE IT RESOLVED by the Board of Supervisors of Woodbury County, Iowa as follows:

1. That a public hearing on the aforesaid proposal shall be held on the **23rd Day of September, 2014 at 10:15 o'clock a.m.** in the meeting room of the Board of Supervisors on the first floor of the Woodbury County Courthouse.
2. That said Board proposes to sell the said parcel of real estate at a public auction to be held on the **23rd Day of September, 2014,** immediately following the closing of the public hearing.
3. That said Board proposes to sell the said real estate to the highest bidder at or above a **total minimum bid of \$598.00** plus recording fees.

Dated this 9th Day of September, 2014.

WOODBURY COUNTY BOARD OF SUPERVISORS

Copy filed.

7. Gary Brown, Emergency Services Director, Mark Nahra, County Engineer and Aaron Lincoln, City Administrator of Sgt. Bluff updated the Board on the 8/31/14 storm.
8. The Chairperson asked if there were any individuals or groups wishing to make a presentation of items not on the agenda, or Supervisors concerns.
9. Motion by Clausen second by Monson to go into closed session per Iowa Code Section 21.5(1)(a). Carried 5-0 on a roll-call vote.

Motion by Tripp second by Monson to go out of closed session per Iowa Code Section 21.5(1)(a). Carried 5-0 on a roll-call vote.

Motion by Tripp second by Monson to allow the expenditure discussed during the appeal heard in executive session pending verification of the terms agreed to. Carried 5-0.

The Board adjourned the regular meeting until September 16, 2014.

**WOODBURY COUNTY
HUMAN RESOURCES DEPARTMENT**

MEMORANDUM

TO: Board of Supervisors

FROM: Ed Gilliland, Human Resources Director
Gloria Mollet, Human Resources Assistant Director
g mollet

RE: United Way

DATE: September 11, 2014

The United Way campaign has contacted David Gleiser about the Woodbury County participation. In the past the Board of Supervisors has graciously given guidance. We ask for discussion and action on the United Way campaign.

Thank you

**Woodbury County
Human Resources Department**

MEMORANDUM

To: Woodbury County Board of Supervisors

From: Ed Gilliland, Director, Gloria Mollet^{Smallt}, Assistant Director,
Melissa Miller, Safety / Risk Coordinator

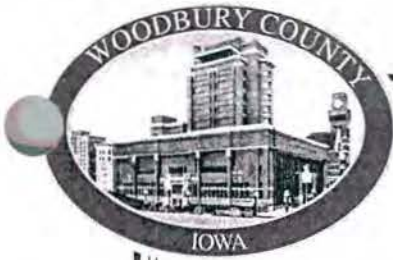
Date: September 12, 2014

RE: Woodbury County Employee Flu Shots

Once again the Woodbury County Board of Supervisors is being asked to fund influenza inoculations for the Employees of Woodbury County. Last year there were approximately 209 flu vaccinations administered, almost half of our workforce.

We are seeking Board direction and authorization to proceed on this item.

Thank you.



WOODBURY COUNTY, IOWA

RESOLUTION NO. 12,067

A RESOLUTION THANKING AND COMMENDING

William L. Anderson

FOR HIS SERVICE TO WOODBURY COUNTY

WHEREAS, William L. Anderson has capably served Woodbury County as an employee of the Woodbury County Conservation Department for 37 years from February 1, 1977 to September 20, 2014; and

WHEREAS, the service given by William L. Anderson as a Woodbury County employee, has been characterized by his dedication to the best interests of the citizens of Woodbury County; and

NOW THEREFORE, BE IT RESOLVED BY THE BOARD OF SUPERVISORS OF WOODBURY COUNTY, IOWA that the undersigned members of this Board thanks and commends William L. Anderson for his years of service to Woodbury County; and

BE IT FURTHER RESOLVED that it is the wish of all those signing below that the future hold only the best for this very deserving person, William L. Anderson.

BE IT SO RESOLVED this 2nd day of September, 2014.

WOODBURY COUNTY BOARD OF SUPERVISORS

George W. Boykin
George W. Boykin, Chairman

Jaclyn D. Smith
Jaclyn D. Smith, Member

Larry D. Clausen
Larry D. Clausen, Member

Mark A. Monson
Mark A. Monson, Member

David L. Tripp
David L. Tripp, Member

Attest:

Patrick F. Gill
Patrick F. Gill, Woodbury County Auditor

WOODBURY COUNTY, IOWA

RESOLUTION NO. _____

A RESOLUTION THANKING AND COMMENDING

Danny McCoy

FOR HIS SERVICE TO WOODBURY COUNTY

WHEREAS, Danny McCoy has capably served Woodbury County as an employee of the Woodbury County Secondary Roads Department for 43 years from October 7, 1971 to October 6, 2014; and

WHEREAS, the service given by Danny McCoy as a Woodbury County employee, has been characterized by his dedication to the best interests of the citizens of Woodbury County; and

NOW THEREFORE, BE IT RESOLVED BY THE BOARD OF SUPERVISORS OF WOODBURY COUNTY, IOWA that the undersigned members of this Board thanks and commends Danny McCoy for his years of service to Woodbury County; and

BE IT FURTHER RESOLVED that it is the wish of all those signing below that the future hold only the best for this very deserving person, Danny McCoy.

BE IT SO RESOLVED this 16th day of September, 2014.

WOODBURY COUNTY BOARD OF SUPERVISORS

George W. Boykin, Chairman

Jaclyn D. Smith, Member

Larry D. Clausen, Member

Mark A. Monson, Member

David L. Tripp, Member

Attest:

Patrick F. Gill, Woodbury County Auditor

WOODBURY COUNTY, IOWA

RESOLUTION NO. _____

A RESOLUTION THANKING AND COMMENDING

Franklin Wigand

FOR HIS SERVICE TO WOODBURY COUNTY

WHEREAS, Franklin Wigand has capably served Woodbury County as an employee of the Woodbury County Secondary Roads Department for 38 years from March 16, 1976 to September 26, 2014; and

WHEREAS, the service given by Franklin Wigand as a Woodbury County employee, has been characterized by his dedication to the best interests of the citizens of Woodbury County; and

NOW THEREFORE, BE IT RESOLVED BY THE BOARD OF SUPERVISORS OF WOODBURY COUNTY, IOWA that the undersigned members of this Board thanks and commends Franklin Wigand for his years of service to Woodbury County; and

BE IT FURTHER RESOLVED that it is the wish of all those signing below that the future hold only the best for this very deserving person, Franklin Wigand.

BE IT SO RESOLVED this 16th day of September, 2014.

WOODBURY COUNTY BOARD OF SUPERVISORS

George W. Boykin, Chairman

Jaclyn D. Smith, Member

Larry D. Clausen, Member

Mark A. Monson, Member

David L. Tripp, Member

Attest:

Patrick F. Gill, Woodbury County Auditor


WOODBURY COUNTY
SIOUX CITY, IOWA 51101

Office of Commissioner of Elections

620 DOUGLAS ST., ROOM 103

Patrick F. Gill
Commissioner
Phone 712-279-6465
Fax 712-279-6629
Email pgill@sioux-city.org

Steve Hofmeyer
Deputy Commissioner
Phone 712-279-6465
Fax 712-279-6629
Email shofmeyer@sioux-city.org

To: Board of Supervisors 

From: Patrick F. Gill, Auditor/Recorder & Commissioner of Elections

Date: September 11, 2014

Re: City of Bronson Council Appointment

Please receive the appointment of Brad Baldwin, 100 Oak Street, Bronson, IA, to the Bronson City Council for the office previously held by Dave Junge, until the next regular election.

Laura King - Re: Planning Worksheet

From: Bronson City Hall <jeslin@wiatel.net>
To: Steve Hofmeyer <shofmeyer@sioux-city.org>
Date: 9/10/2014 7:30 AM
Subject: Re: Planning Worksheet

Hi Steve,

One of our councilman, Dave Junge, moved out of town and has resigned as councilman....we have appointed Brad Baldwin to replace him. Let me know if you need any more information at this time...

Thanks

Lindy

On Monday 07/15/2013 at 11:53 am, Steve Hofmeyer wrote:

Lindy,

I received your note today along with your Planning Worksheet, thanks for explaining what went on. However in the future could you let us know when you have someone move or resign and you replace them so we can keep our records updated and correct. We didn't have any record of Jason Ross resigning or Mike Ott moving.

You're correct in listing Tony Thompson on the worksheet, that position will go on the ballot as "to fill a vacancy" since that term isn't up until 2015.

Thanks,

Steve Hofmeyer
Deputy Commissioner of Elections
shofmeyer@sioux-city.org
712/279-6465



Faith Christian Reformed Church
801 9th Street S.E.
P.O. Box 128
Sioux Center, IA 51250

September 2, 2014

Woodbury Board of Supervisors
620 Douglas Street—Room 104
Sioux City, IA 51101

RE: Requested tax abatement for property located at 601 Court Street (Parcel #8947-28-402022)

Friends,

We are requesting a real estate tax abatement on the above-referenced property for taxes due from July 1, 2013 to June 30, 2014 payable September 2014 and March 2015, your records will show that:

- For the last several years the property was owned by Alan and Carol Kramer. They allowed the Siouxland Unity Christian Reformed Congregation to use the building exclusively for worship and church-related functions, rent-free. The Kramers paid the real estate taxes.
- According to Woodbury Deed Document 1696, roll 730, image 748, the property was transferred on June 10, 2013 to Faith Christian Reformed Church (CRC) of Sioux Center, IA. Siouxland Unity is not an incorporated entity and unable to own property. Siouxland Unity continues to use the building exclusively for worship and church-related functions, rent-free.
- Faith CRC of Sioux Center of Sioux Center obtained a tax exempt status from the Sioux City Assessor's office in November of 2013, effective January 1, 2014

We request that all taxes due and payable on this property be abated.

Grounds:

1. For more than 8 years the property has been used exclusively for charitable purposes
2. The deed was transferred to Faith CRC on 6-10-2013 which was 20 days before the July 1, 2013 date on which taxes are being assessed.
3. We are simply asking that the tax exempt status obtained in November of 2013 be retro-active to our possession date, rather than delaying it until January 2014.

We ask that we be able to have a representative present at the meeting where this issue is discussed. Thank you for your consideration.

Sincerely,

Scott Hulstein, Clerk of Council

WOODBURY COUNTY, IOWA

RESOLUTION #

RESOLUTION APPROVING ABATEMENT OF TAXES

WHEREAS, Faith Christian Reformed Church is the titleholder of real estate Parcel #894728402022 located in Woodbury County, Iowa and legally described as follows:

Parcel #894728402022

Lot One (1) & Lot Two (2) Block Forty-seven (47) Middle Sioux City Addition, City of Sioux City, Woodbury County, Iowa

WHEREAS, the above-stated property has taxes owing for the 2013-2014 tax year, and the parcel is owned by Faith Christian Reformed Church; and

WHEREAS, the organization, namely Faith Christian Reformed Church is failing to immediately pay the taxes due; and

WHEREAS, the Board of Supervisors sees that good cause exists for the abatement of these taxes and; and

NOW, THEREFORE, BE IT RESOLVED, that the Woodbury County Board of Supervisors hereby abates the taxes owing on the above parcel according to Code of Iowa, 445.16 for the taxes owed for the tax year 2013/2014, and hereby directs the Woodbury County Treasurer to abate these aforementioned taxes from the tax records.

SO RESOLVED this 16th day of September, 2014.

ATTEST:

WOODBURY COUNTY BOARD OF SUPERVISORS

Patrick F. Gill
Woodbury County Auditor/Recorder

George W. Boykin, Chairman

WOODBURY COUNTY TREASURER

MICHAEL R CLAYTON

620 DOUGLAS ST ROOM 102
SIOUX CITY IA 51101 PHONE (712) 279-6495 000894728402022
taxdept@sioux-city.org

Receipt#
25862

WOODBURY COUNTY TREASURER

MICHAEL R CLAYTON

620 DOUGLAS ST ROOM 102
SIOUX CITY IA 51101 PHONE (712) 279-6495 000894728402022
taxdept@sioux-city.org

Receipt#
25862

TOTAL TAX DUE: or **SEPT 1, 2014**
\$5,770.00 **\$2,885.00**

DED 123486062 Delinquent OCT 1, 2014

TAX DUE: **MARCH 1, 2015**
\$2,885.00

DED 123486062 Delinquent APRIL 1, 2015

FAITH CHRISTIAN REFORMED CHURCH SIOUX CENTER IA
801 9TH SE
PO BOX 128
SIOUX CENTER, IA 51250

FAITH CHRISTIAN REFORMED CHURCH SIOUX CEN
801 9TH SE
PO BOX 128
SIOUX CENTER, IA 51250

087 087 SC LL SIOUX CITY COMM

087 087 SC LL SIOUX CITY COMM

WOODBURY COUNTY REAL ESTATE TAXES, SEND THE CORRECT STUBS ALONG WITH YOUR CHECK FOR PAYMENT

SEE REVERSE SIDE FOR MORE INFORMATION

Based on JANUARY 1, 2013 Valuations. Taxes FOR JULY 1, 2013 - JUNE 30, 2014, payable SEPTEMBER 2014 and MARCH 2015

Parcel 000894728402022 Location: 601 COURT ST SIOUX CITY

087 087 SC LL SIOUX CITY COMM

Sect 000Twn 000 Rng 000Gross Acres .00
000Exempt Acres .00
Net Acres .00

VIN 15,190.95 SQFT TITLE
LEGAL Description MIDDLE SIOUX CITY LOT 1 & LOT 2 BLK 47

VALUATIONS AND TAXES THIS YEAR

LAST YEAR

TAXES DUE

Delinquent Tax, Specials, Drainage, Tax Sale

	Assessed	Taxable	Assessed	Taxable
COM Land:	23,200	22,040	23,200	23,200
Buildings:	121,300	115,235	121,300	121,300
Dwelling:				
TOTAL VALUE:	\$144,500	\$137,275	\$144,500	\$144,500

Less Military Exemption:

NET TAXABLE VALUE: \$137,275 \$144,500

Value Times Levy per 1000 of: 42.0260900 41.6296600 123486062 00000000 00000000
EQUALS GROSS TAX OF: 5,769.13 6,015.49 FAITH CHRISTIAN REFORMED CHURCH SIOUX CENTER

Less Credits of:

- Homestead Credit
- Ag Land Credit
- Family Farm Credit
- Business Prop Tax Credit Fund
- Low Income/Elderly Credit
- Prepaid Tax

801 9TH SE
PO BOX 128
SIOUX CENTER, IA 51250

NET ANNUAL TAXES: \$5,770.00 \$6,016.00

House Tax: County EMS \$ 486,749.00

Taxing Authority:	Distribution of your current & prior year taxes			Total property taxes levied by taxing authority		
	%Total	Current	Prior	Current	Prior	Percent +/-

Adjusted Statement as of 9/12/2014	1st Half	2nd Half
Due	2885.00	2885.00
Plus Penalty	.00	.00
Plus Publish Cost	.00	.00
Less Payments	.00	.00
BALANCE DUE	2885.00	2885.00

Online Payment Available at: www.iowatreasurers.org

TOTALS:

WOODBURY COUNTY TREASURER	Receipt#	DUE SEPT 1, 2014	\$2,885.00	DUE MARCH 1, 2015	\$2,885.00
MICHAEL R CLAYTON	14/15 10-25862	Date Paid: _____		Date Paid: _____	
620 DOUGLAS ST ROOM 102		CHECK# _____		CHECK# _____	
SIOUX CITY IA 51101 PHONE (712) 279-6495					
taxdept@sioux-city.org					

RELEASE OF REAL ESTATE MORTGAGE RECORDER'S COVER SHEET

Prepared by:

David Gleiser, 620 Douglas Street – 6th Floor, Sioux City, IA 51101 (712) 279-6609

Return Document To:

David Gleiser, 620 Douglas Street – 6th Floor, Sioux City, IA 51101 (712) 279-6609

Taxpayer Information:

Not Applicable

Grantor(s):

Gary Holtz and Robin Holtz, Husband and Wife

Grantee:

Woodbury County, Iowa

Legal Description:

See page 2

Document of Instrument of previously recorded document(s):

RELEASE OF REAL ESTATE MORTGAGE

The undersigned, George Boykin, the duly elected Chairman of the Woodbury County Board of Supervisors, certifies and declares that the certain Mortgage and Promissory Note dated **April 26, 2013**, made and executed by Gary Holtz and Robin Holtz, to **Woodbury County, Iowa** and given in consideration of the receipt of funds for the rehabilitation of the following described real property:

All that part of the abandoned Chicago, Milwaukee, St. Paul and Pacific Railroad Company Right of Way in the SW ¼ of the SW ¼ of Section 28, Township 86 North, Range 45 West of the Fifth Principal Meridian, in the County of Woodbury and State of Iowa, described as follows: Commencing at the Southwest corner of said SW ¼ of the SW ¼ of said Section 28; thence North 0°00'00" East along the West line of said SW ¼ of the SW ¼ for 437.44 feet; thence North 90°00'00" East for 33.00 feet to the East Right of Way line of Main Street and the point of beginning; thence North 0°00'00" East along said East Right of Way line for 229.15 feet to the intersection of said East Right of Way line and the Southwesterly Right of Way line of Railway Street; thence South 40°17'28" East along said Southwesterly Right of Way line for 176.23 feet; thence South 50°16'04" West for 148.19 feet to the point of beginning. Said described parcel contains 0.300 acres, more or less.

Which Mortgage and Promissory Note were recorded in the office of the Woodbury County Auditor & Recorder on **April 29, 2013 at Roll 729 Image 1966**, is fully discharged.

Dated this _____ day of _____, 2014.

WOODBURY COUNTY, IOWA

George Boykin, Chairman – Woodbury County Board of Supervisors

STATE OF IOWA)
) SS:
WOODBURY COUNTY)

On this _____ day of _____, 2014, before me, the undersigned, a Notary Public in and for the County of Woodbury, State of Iowa, personally appeared **George Boykin, Chairman – Woodbury County Board of Supervisors**, to me personally known to be the person named in and who executed the foregoing instrument and acknowledged that he executed the same as his voluntary act and deed.

My Commission expires:

Notary Public in and for said County and State

UCC FINANCING STATEMENT AMENDMENT

FOLLOW INSTRUCTIONS

A. NAME & PHONE OF CONTACT AT FILER (optional) David Gleiser (712) 279-6609
B. E-MAIL CONTACT AT FILER (optional) dgleiser@sioux-city.org
C. SEND ACKNOWLEDGMENT TO: (Name and Address) Attention to: David Gleiser Woodbury County 620 Douglas Street, 6th Floor Sioux City, IA 51101

THE ABOVE SPACE IS FOR FILING OFFICE USE ONLY

1a. INITIAL FINANCING STATEMENT FILE NUMBER
E13032717-6

1b. This FINANCING STATEMENT AMENDMENT is to be filed [for record] (or recorded) in the REAL ESTATE RECORDS
Filer: attach Amendment Addendum (Form UCC3Ad) and provide Debtor's name in item 13

2. **TERMINATION:** Effectiveness of the Financing Statement identified above is terminated with respect to the security interest(s) of Secured Party authorizing this Termination Statement

3. **ASSIGNMENT** (full or partial): Provide name of Assignee in item 7a or 7b, and address of Assignee in item 7c and name of Assignor in item 9
For partial assignment, complete items 7 and 9 and also indicate affected collateral in item 8

4. **CONTINUATION:** Effectiveness of the Financing Statement identified above with respect to the security interest(s) of Secured Party authorizing this Continuation Statement is continued for the additional period provided by applicable law

5. **PARTY INFORMATION CHANGE:**
Check one of these two boxes: Debtor or Secured Party of record
AND Check one of these three boxes to:
 CHANGE name and/or address: Complete item 6a or 6b; and item 7a or 7b and item 7c
 ADD name: Complete item 7a or 7b, and item 7c
 DELETE name: Give record name to be deleted in item 6a or 6b

6. **CURRENT RECORD INFORMATION:** Complete for Party Information Change - provide only one name (6a or 6b)

6a. ORGANIZATION'S NAME

OR

6b. INDIVIDUAL'S SURNAME	FIRST PERSONAL NAME	ADDITIONAL NAME(S)/INITIAL(S)	SUFFIX
--------------------------	---------------------	-------------------------------	--------

7. **CHANGED OR ADDED INFORMATION:** Complete for Assignment or Party Information Change - provide only one name (7a or 7b) (use exact, full name; do not omit, modify, or abbreviate any part of the Debtor's name)

7a. ORGANIZATION'S NAME

OR

7b. INDIVIDUAL'S SURNAME	INDIVIDUAL'S FIRST PERSONAL NAME	INDIVIDUAL'S ADDITIONAL NAME(S)/INITIAL(S)	SUFFIX
--------------------------	----------------------------------	--	--------

7c. MAILING ADDRESS	CITY	STATE	POSTAL CODE	COUNTRY
---------------------	------	-------	-------------	---------

8. **COLLATERAL CHANGE:** Also check one of these four boxes: ADD collateral DELETE collateral RESTATE covered collateral ASSIGN collateral
Indicate collateral:

9. **NAME OF SECURED PARTY OF RECORD AUTHORIZING THIS AMENDMENT:** Provide only one name (9a or 9b) (name of Assignor, if this is an Assignment)
If this is an Amendment authorized by a DEBTOR, check here and provide name of authorizing Debtor

9a. ORGANIZATION'S NAME
Woodbury County, Iowa

OR

9b. INDIVIDUAL'S SURNAME	FIRST PERSONAL NAME	ADDITIONAL NAME(S)/INITIAL(S)	SUFFIX
--------------------------	---------------------	-------------------------------	--------

10. OPTIONAL FILER REFERENCE DATA:

WOODBURY COUNTY JUVENILE DETENTION CENTER

TO: Woodbury County Board of Supervisors

From: Mark Olsen, Director, WCJDC

Subject: Daily Detention Costs

Date: September 11, 2014

Board members:

The following is the proposed cost we would increase too for the daily detention with our current contractual partners including; Bureau of Indian Affairs, Dakota County and Union County.

- **I am recommending the board approve the increase in the daily detention costs from \$100.00 per day to \$150.00**
- **The proposed increase will bring in an additional \$100,000.00 to the county. Over the last three years we have averaged \$125,300 yearly from the BIA and \$81,300.00 from Dakota County for a yearly average of \$206,600.00. If the increase is approved the three contract would increase to a total of \$309,900.00.**
- **The daily increase will remain competitive with area detention centers allowing the business to stay with us.**
- **Costs that Woodbury County are not responsible for with contractual states but are responsible for with Woodbury County youth include:**
 - ✓ **All medical needs unless the injury happened while in our detention custody**
 - ✓ **All prescriptions: If it becomes necessary to purchase medication it is billed back to the state. Only has happened once.**
 - ✓ **Transportation: All transportation is the responsibility of the detaining state unless emergency transport is needed. If required the costs will be billed back to the state.**
- **Daily running of the detention center is already budgeted whether we have the contracted state youths detained or not.**
- **Last year's daily population average was fourteen youth per day. Left six beds open for outside revenue.**
- **Contracts are based on a bed availability basis. When we do reach our twenty bed capacity and it becomes necessary to bump clients to avoid over-**

**crowding the contracted states are the first to be immediately removed.
Woodbury County is our primary catchment area.**

I have continued to charge \$100.00 per day until I heard back from the BIA due to being a federal contract. I have recently received their paper work for their regular increase of \$50,000.00 to further detain their juveniles. I have notified both their Contracting Office and area representative of the possible cost increase. I have not received any requests from the three bodies to terminate contracts due to the potential increases.

If the board approves the increase I will meet with Josh Widman to develop new cost increase addendums.



OFFICE OF
Woodbury County Planning & Zoning Administrator

SIXTH FLOOR • SEVENTH AND DOUGLAS STREETS – SIOUX CITY, IA 51101

John Pylelo - Planning & Zoning Administrator • jpylelo@sioux-city.org

Peggy Napier - Clerk II • pnapier@sioux-city.org

Telephone (712) 279-6557

Fax (712) 279-6530

To: Board of Supervisors

From: John Pylelo – Planning and Zoning

**Re: Board of Supervisors Meeting
of Tuesday September 16, 2014**

Date: September 11, 2014

Planning and Zoning –John Pylelo, Director

Resolution Accepting and Approving the Final Platting for Fauth Addition, A Minor Subdivision and Authorization of Chairman's Signature; GIS Parcel #894534400006.

Lorne Fauth has filed an application and final platting to subdivide 7.19 acres into 2 lots. The applicant currently resides on the parcel within the existing single family dwelling. The applicant operates an over the road trucking business and wishes to construct an accessory structure allowing him to meet the home occupation rules within Woodbury County zoning ordinances. Placement of the proposed structure results in the applicant's request for an additional drive from the west side of Franklin Avenue. Woodbury County's Secondary Roads Department policy allows only one drive to service a parcel or lot 10 acres or less. It was suggested to the applicant that establishing an independent parcel abutting Franklin Avenue would allow the Secondary Road Department to accept a driveway permit application for the new independent parcel.

The parent parcel lies in rural Woodbury County approximately 2.0 miles east of Lawton at the northwest corner of Hwy 20 and Franklin Avenue. The parcel lies within a portion of the SE ¼ of Section 34 in Banner Township. The town of Lawton has the right to extraterritorial review which the Lawton Town Council has waived..

The parent parcel is zoned AP (Agricultural Preservation); not within a special flood hazard area; does not lie within any drainage district and is serviced by an existing drive addressed 2387 Hwy 20, Lawton.

** Plat available in the Board office for review*

As the use of the parent parcel is solely residential no CSR value history for the parcel exists. The average CSR values in the area range from 46.8 to 59.2. This range is within County policy allowing subdivision approval. The existing AP (Agricultural Preservation) zoning district designation permits the potential residential density.

Zoning Commission Recommendation:

On August 25, 2014, the Zoning Commission held a public hearing accepted testimony on the proposed subdivision. The Commission then voted to recommend final plat approval subject to:

1. The recording of a Paving Agreement meeting County paving policy. A Paving Agreement meeting County policy has been drafted and awaits signature.

Staff Recommendation:

The Office of Planning and Zoning staff concurs with the Zoning Commission recommendation including the condition above stated.

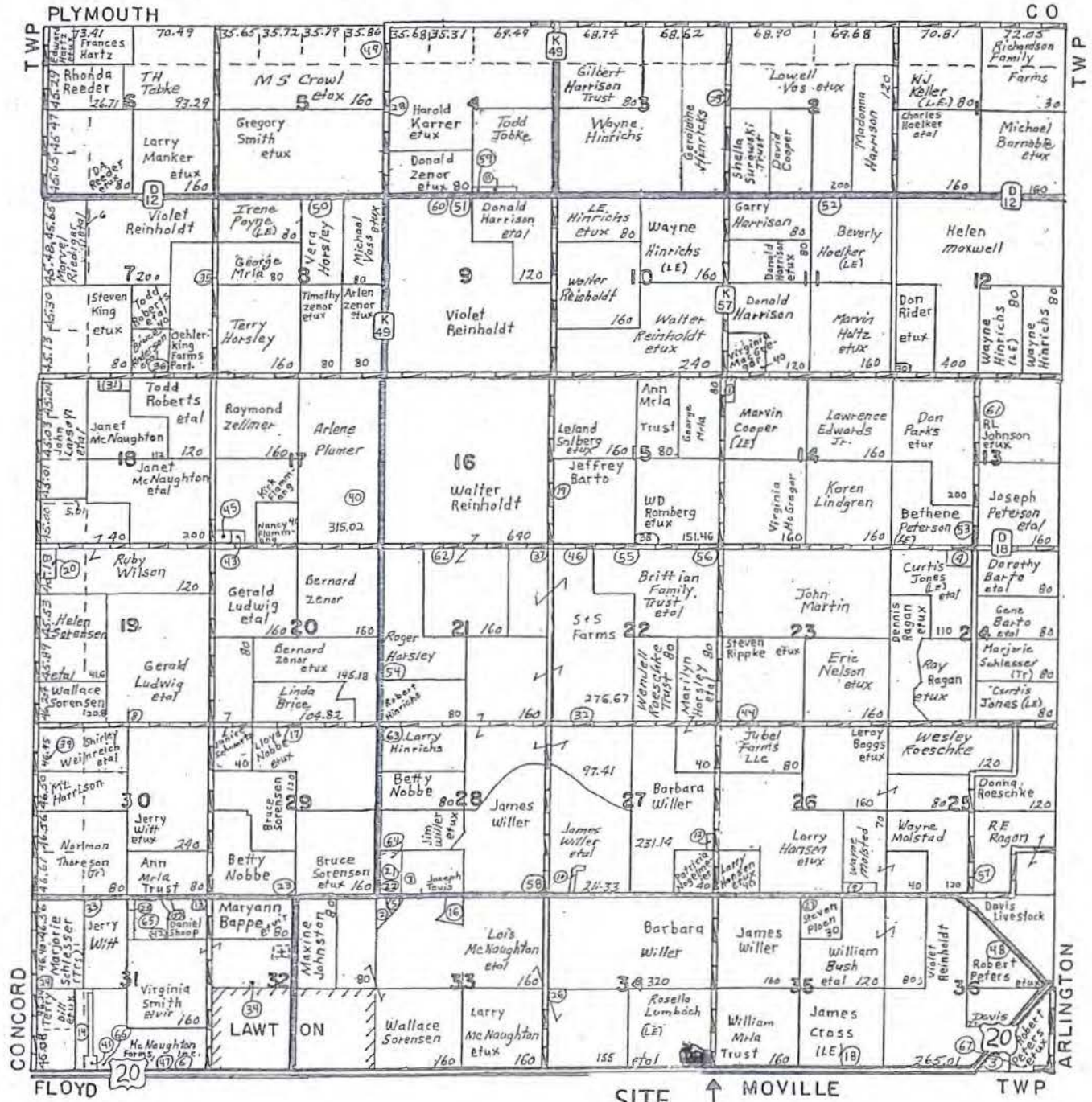
Provided by attachment find:

- Location Information
- Parent Parcel Information
- Site pictures
- Final Platting
- Paving Agreement

Your Board is asked to Approve the Final Platting for the Fauth Addition (a Minor Subdivision) and Authorize your Chairman's signature.

Fauth Additon – A Minor Subdivision
 2387 Hwy 20, Lawton
 GIS Parcel #894534400006
 Portion of SE ¼ Section 34, Banner
 Zoned AP (Ag Preservation)

- | | | | |
|--|---------------------------------------|--------------------------------------|---|
| 1. Sec.14 David Cooper, etux-9.54 | 12. Sec.27 Fred Helmich, etux-3.93 | 23. Sec.29 Marlene Nitzschke | 45. Sec.17 David Law, etux |
| 2. Sec.33 Thomas Thiesen, etux | 13. Sec.31 Douglas Marks, etux-5.22 | 24. Sec.31 Mark Davies, etux-5.5 | 46. Sec.22 Kent Zimmerman, etux-2.2 |
| 3. Sec.36 Brian Berkenpos, etux | 14. Sec.31 Kenneth Uhl, etux | 25. Sec.31 Scott Semple, etux-5 | 47. Sec.31 Stanley Chartier, etux-11.57 |
| 4. Sec.24 Donald Lee, etux-10 | 15. Sec.31 Thomas Robinson, etux-5 | 26. Sec.34 Lois McNaughton-5 | 48. Sec.36 Hans Nelson, etux-5.06 |
| 5. Sec.33 Joel Stilwell, etux | 16. Sec.33 Jerry Furne, etux | 27. Sec.35 Lee Lander, etux-10 | 49. Sec.5 Sheila Gerke-13.16 |
| 6. Sec.31 Bradley Pedersen, etux-2.8 | 17. Sec.29 Todd Copley | 28. Sec.4 Fred Davis, etux-2.98 | 50. Sec.8 Robert Weatherly, etux-3.0 |
| 7. Sec.28 Thomas Thiesen, etux | 18. Sec.35 Bradley Hopp, etux | 29. Sec.3 M. J. Beavers, etux-10 | 51. Sec.9 Walter Reinholdt, etux-2.43 |
| 8. Sec.36 Tracy Countryman, etux-2.02 | 19. Sec.15 Craig Pedersen, etux | 30. Sec.12 Roger Forch-5.5 | 52. Sec.11 Charles Hoelker, etal-10.09 |
| 9. Sec.25 Thone Mosier, etux | 20. Sec.19 Lee Coulter, etux-10 | 31. Sec.18 Rodney Lieber, etux-8 | 53. Sec.13 Kenneth Petersen, etux |
| 10. Sec.27 Larry Riemenschneider, etal | 21. Sec.28 Joseph Tevis, etal | 32. Sec.22 Arlan Kalker, etux-1.13 | 54. Sec.21 Roger Harsley, etux |
| 11. Sec.4 Phillip Greg, etux-4.25 | 22. Sec.28 Bobby Geisinger, etux-8.33 | 33. Sec.31 Marvin Roethler, etux | 55. Sec.22 Marty Anfinson, etux |
| | | 34. Sec.32 City of Lawton-7.26 | 56. Sec.22 Stephen Riser |
| | | 35. Sec.7 B. A. Anderson, etux-5.0 | 57. Sec.25 David Brosomie, etux |
| | | 36. Sec.7 R. M. Anderson, etux-5.0 | 58. Sec.28 Curtis Bloakenburg, etux |
| | | 37. Sec.21 Jon Zoek, etux | 59. Sec.4 Cindy Fink-2.0 |
| | | 38. Sec.15 Paul Roberts, etux-8.54 | 60. Sec.9 Gary Heath-2.27 |
| | | 39. Sec.30 Charles Hammack-5 | 61. Sec.13 William Destigher, etux-9.28 |
| | | 40. Sec.17 Dav. Swanger-4.98 | 62. Sec.21 Bradley Rohde, etux-2.54 |
| | | 41. Sec.31 Lawton Airport, Inc.-7.98 | 63. Sec.28 Richard Scott, etux-5.0 |
| | | 42. Sec.31 Marvin Harrison, etux | 64. Sec.28 Beverly Hoelker-5.33 |
| | | 43. Sec.17 Kirk Flammang, etux | 65. Sec.31 Mark Lofton, etux-6.10 |
| | | 44. Sec.23 Steven Rippe, etux-2 | 66. Sec.3 Curtis McNaughton, etux-5.0 |

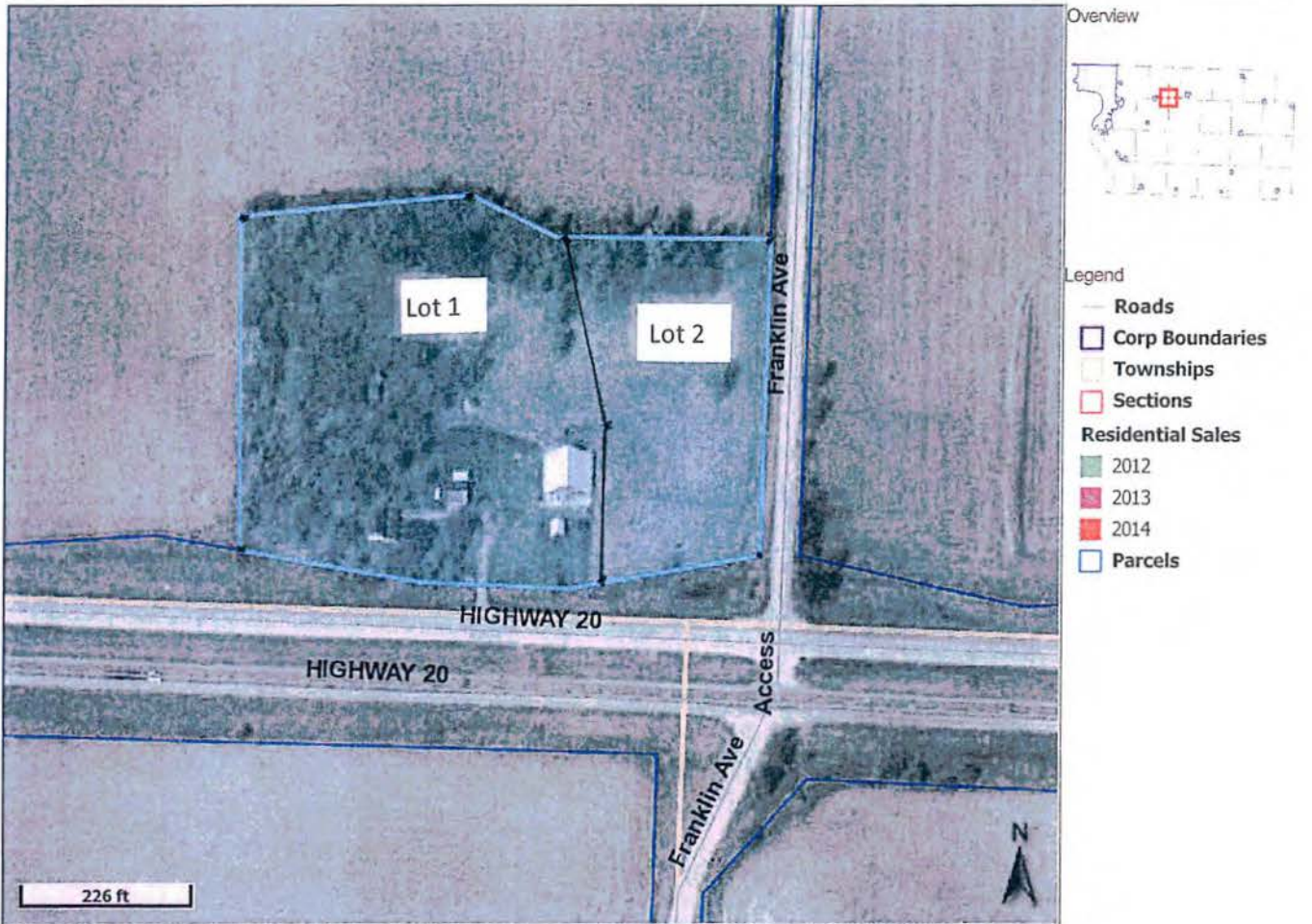


SITE ↑ MOVILLE TWP

Woodbury County, IA / Sioux City

Fauth Additon – A Minor Subdivision
 2387 Hwy 20, Lawton
 GIS Parcel #894534400006
 Portion of SE ¼ Section 34, Banner
 Zoned AP (Ag Preservation)

Date Created: 8/13/2014



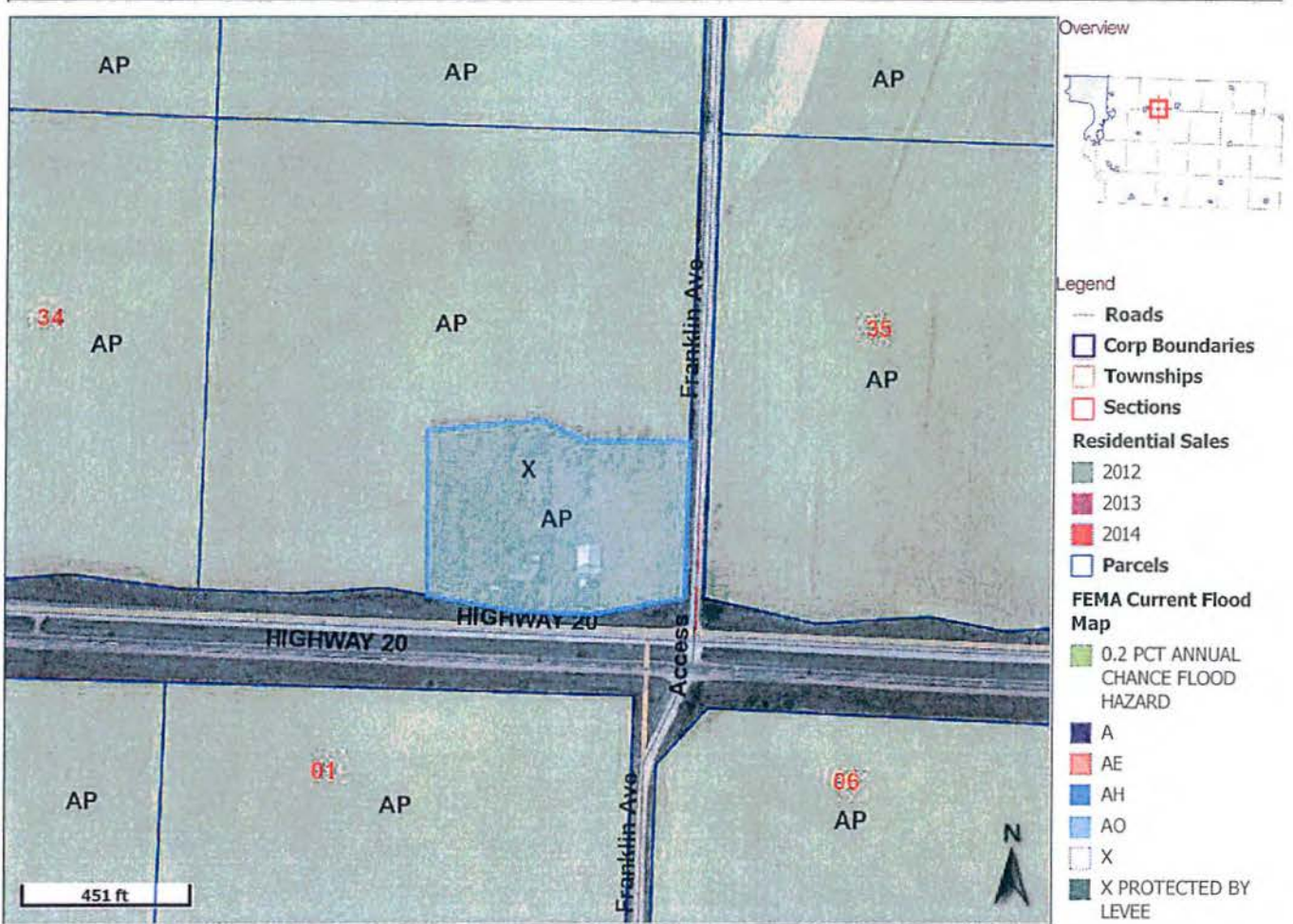
Parcel ID	894534400006	Alternate ID	00000000870736	Owner Address	FAUTH LORNE J
Sec/Twp/Rng	34-89-45	Class	R		2387 HWY 20
Property Address	2387 HWY 20 BANNER	Acreage	7.19		LAWTON, IA 51030

District 024 BANNER LAWTON BRONSON COMM
Brief Tax Description BANNER TOWNSHIP
 PT SE 1/4 COM SE COR
 THEC N 502.04 FT, W
 313.19 FT, NWLY 125
 .27 FT, SWLY 300.58
 FT, S 524.03 FT, & E
 717.87 FT 34-89-45

(Note: Not to be used on legal documents)

Last Data Upload: 8/13/2014 2:56:05 AM

Date Created: 8/18/2014



- Legend**
- Roads
 - Corp Boundaries
 - Townships
 - Sections
 - Residential Sales**
 - 2012
 - 2013
 - 2014
 - Parcels
 - FEMA Current Flood Map**
 - 0.2 PCT ANNUAL CHANCE FLOOD HAZARD
 - A
 - AE
 - AH
 - AO
 - X
 - X PROTECTED BY LEVEE
 - County Zoning**
 - AE
 - AE-PD
 - AP
 - AP-PD
 - GC
 - GC-PD
 - GI
 - GI-PD
 - HC
 - HC-PD
 - L I-PD
 - LI
 - NR-PD
 - SR
 - SR-PD
 - WR

Fauth Additon – A Minor Subdivision
 2387 Hwy 20, Lawton
 GIS Parcel #894534400006
 Portion of SE ¼ Section 34, Banner
 Zoned AP (Ag Preservation)

Parcel ID 894534400006

Alternate ID 00000000870736

Owner Address FAUTH LORNE J

Summary

Parcel ID 894534400006
Alternate ID 870736
Property Address 2387 Hwy 20
 Banner
Sec/Twp/Rng 34-89-45
Brief Legal Description BANNER TOWNSHIP PT SE 1/4 COM SE COR THEC N 502.04 FT, W 313.19 FT, NWLY 125 .27 FT, SWLY 300.58 FT, S 524.03 FT, & E 717.87 FT 34-89-45
 (Note: Not to be used on legal documents)
 WD: 735-7409 (5/30/2014)
Document(s)
Gross Acres 0.00
Net Acres 7.19
Exempt Acres -7.19
CSR N/A
Class R - Residential
Tax District 024 BANNER LAWTON BRONSON COMM
School District LAWTON BRONSON



Fauth Additon – A Minor Subdivision
 2387 Hwy 20, Lawton
 GIS Parcel #894534400006
 Portion of SE ¼ Section 34, Banner
 Zoned AP (Ag Preservation)

Owner

Primary Owner (Deed Holder)
 Fauth Lorne J
 2387 Hwy 20
 Lawton, IA 51030

Secondary Owner

Land

Lot Area 7.19 Acres; 313,196 SF

Residential Dwellings

Residential Dwelling
Occupancy Single-Family / Owner Occupied
Style 1 Story Frame
Architectural Style N/A
Year Built 2010
Condition Normal
Grade what's this? 3+5
Roof Asph / Hip
Flooring Carp / Tile / Hdw
Foundation None
Exterior Material Stucco
Interior Material Drwl
Brick or Stone Veneer 1/2 Story Sim Str; 101 linear ft.
Total Gross Living Area 1,838 SF
Attic Type None;
Number of Rooms 5 above; 1 below
Number of Bedrooms 3 above; 0 below
Basement Area Type Full
Basement Area 1,838
Basement Finished Area
Plumbing 1 Base Plumbing (Full) ; 1 Fbgls Service Sink;
Appliances
Central Air Yes
Heat FHA - Electric
Fireplaces
Porches 1S Frame Open (64 SF); 1S Frame Open (480 SF);
Decks
Additions
Garages 960 SF - Att Frame (Built 2010);

Agricultural Buildings

Plot #	Type	Description	Width	Length	Year Built	Building County
0	Barn - Flat		60	64	1950	1

Sales

Date	Seller	Buyer	Recording	NUTC	Type	Multi Parcel	Amount
4/30/2014	POSTHUMA GLEN D	FAUTH LORNE J	735/7409	Normal	Deed		\$289,900.00
8/27/2009	LUMBACH ROSELLA A LE ETAL	POSTHUMA GLEN D	705/9507	Normal	Deed		\$106,000.00

+

Permits

Permit #	Date	Description	Amount
5255	03/26/2010	New Dwlg	200,000

Valuation

	2014	2013	2012	2011	2010
+ Assessed Building Value	\$0	\$0	\$0	\$0	\$0
+ Assessed Dwelling Value	\$225,850	\$225,850	\$202,310	\$163,120	\$68,690
+ Assessed Land Value	\$32,000	\$32,000	\$32,000	\$32,000	\$32,000
+ Exempt Value	N/A	N/A	N/A	N/A	N/A
= Gross Assessed Value	\$257,850	\$257,850	\$234,310	\$195,120	\$100,690
- Exempt Value	N/A	N/A	N/A	N/A	N/A

= Net Assessed Value	\$257,850	\$257,850	\$234,310	\$195,120	\$100,690
----------------------	-----------	-----------	-----------	-----------	-----------

Taxation

	2013	2012	2011	2010
+ Taxable Land Value	\$17,408	\$16,901	\$16,241	\$15,530
+ Taxable Building Value	\$122,863	\$106,853	\$82,786	\$33,335
+ Taxable Dwelling Value	\$0	\$0	\$0	\$0
= Gross Taxable Value	\$140,271	\$123,754	\$99,027	\$48,865
- Military Exemption	\$0	\$0	\$0	\$0
= Net Taxable Value	\$140,271	\$123,754	\$99,027	\$48,865
x Levy Rate (per \$1000 of value)	28.43097	28.21579	27.57486	27.96603
= Gross Taxes Due	\$3,988.04	\$3,491.82	\$2,730.66	\$1,366.56
- Ag Land Credit	\$0.00	\$0.00	\$0.00	\$0.00
- DSC Credit	\$0.00	\$0.00	\$0.00	\$0.00
- Family Farm Credit	\$0.00	\$0.00	\$0.00	\$0.00
- Homestead Credit	(\$137.89)	(\$136.85)	(\$104.31)	\$0.00
- Business Property Credit	\$0.00	\$0.00	\$0.00	\$0.00
- Prepaid Tax	\$0.00	\$0.00	\$0.00	\$0.00
= Net Taxes Due	\$3,850.00	\$3,354.00	\$2,626.00	\$1,366.00

Treasurer Link

[Click here to view tax information for this parcel](#)

Tax History

Year	Due Date	Amount	Paid	Date Paid	Receipt
2013	March 2015	\$1,925	No		6119
	September 2014	\$1,925	No		
2012	March 2014	\$1,677	Yes	8/28/2013	6130
	September 2013	\$1,677	Yes	8/28/2013	
2011	March 2013	\$1,313	Yes	9/5/2012	6122
	September 2012	\$1,313	Yes	9/5/2012	
2010	March 2012	\$683	Yes	9/7/2011	6122
	September 2011	\$683	Yes	9/7/2011	

Iowa Land Records

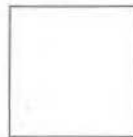
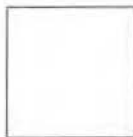
Book-Page: 735-7409 (5/30/2014)

Data for Woodbury County between Beacon and Iowa Land Records is available on the Iowa Land Records site beginning in 1994. For records prior to 1994, contact the County Recorder or Customer Support at www.IowaLandRecords.org.

Photos



Sketches



No data available for the following modules: Commercial Buildings, Yard Extras, Valuation (Sioux City). [Click here for help.](#)

IMPORTANT NOTICE

All data posted is certified as of July 1, 2013

The maps and data available for access at this website are provided "as is" without warranty or any representation of accuracy, timeliness, or completeness. There are no warranties, expressed or implied, as to the appropriate use of the maps and data or the fitness for a particular purpose. The maps and associated data at this website do not represent a survey. No liability is assumed for the accuracy of the data delineated on any map, either expressed or implied.

Legal descriptions should be obtained from the County Auditor's office located at 620 Douglas, Sioux City, or by calling 712-279-6603. The legal descriptions shown on the property record card are merely abbreviated tax descriptions intended only to help identify the property.

Last Data Upload: 8/13/2014 2:56:05 AM



2387

Fauth Additon – A Minor Subdivision
2387 Hwy 20, Lawton
GIS Parcel #894534400006
Portion of SE ¼ Section 34, Banner
Zoned AP (Ag Preservation)

Fauth Additon – A Minor Subdivision
2387 Hwy 20, Lawton
GIS Parcel #894534400006
Portion of SE ¼ Section 34, Banner
Zoned AP (Ag Preservation)



Hwy 20 ROW Looking East from Franklin Ave Intersection

Fauth Additon – A Minor Subdivision
2387 Hwy 20, Lawton
GIS Parcel #894534400006
Portion of SE ¼ Section 34, Banner
Zoned AP (Ag Preservation)



Hwy 20 ROW Looking West from Franklin Ave Intersection

Fauth Additon – A Minor Subdivision
2387 Hwy 20, Lawton
GIS Parcel #894534400006
Portion of SE ¼ Section 34, Banner
Zoned AP (Ag Preservation)



Franklin Ave ROW Looking North from Hwy 20

Fauth Additon – A Minor Subdivision
2387 Hwy 20, Lawton
GIS Parcel #894534400006
Portion of SE ¼ Section 34, Banner
Zoned AP (Ag Preservation)



Franklin Ave ROW Looking South toward Hwy 20

Fauth Additon – A Minor Subdivision
2387 Hwy 20, Lawton
GIS Parcel #894534400006
Portion of SE ¼ Section 34, Banner
Zoned AP (Ag Preservation)



Lot 1 Residence

Fauth Additon – A Minor Subdivision
2387 Hwy 20, Lawton
GIS Parcel #894534400006
Portion of SE ¼ Section 34, Banner
Zoned AP (Ag Preservation)



Lot 1 Barn

Fauth Additon – A Minor Subdivision
2387 Hwy 20, Lawton
GIS Parcel #894534400006
Portion of SE ¼ Section 34, Banner
Zoned AP (Ag Preservation)

Lot 2 Looking Northwest from Hwy20/Franklin Ave Intersection

Fauth Additon – A Minor Subdivision
2387 Hwy 20, Lawton
GIS Parcel #894534400006
Portion of SE ¼ Section 34, Banner
Zoned AP (Ag Preservation)



Lot 2 Looking Southwest from Franklin Ave ROW

Fauth Additon – A Minor Subdivision
2387 Hwy 20, Lawton
GIS Parcel #894534400006
Portion of SE ¼ Section 34, Banner
Zoned AP (Ag Preservation)



Lot 2 Looking East from Lot 1

AGREEMENT TO IMPOSE COVENANT

The undersigned, Lorne J. Fauth, a single person, is the owner of the following described real estate, to wit:

A parcel of land located in the Southeast Quarter (SE $\frac{1}{4}$) of Section Thirty-four (34), Township Eighty-nine (89) North, Range Forty-five (45) West of the Fifth Principal Meridian, Woodbury County, Iowa, described as follows: Beginning at the Southeast corner of the Southeast Quarter (SE $\frac{1}{4}$) of said Section Thirty-four (34); thence North Eighty-nine Degrees Twenty Minutes Ten Seconds (N 89°20'10") West Seven Hundred Seventeen and Eighty-seven Hundredths feet (717.87') along the South line of the Southeast Quarter (SE $\frac{1}{4}$); thence North Zero Degrees Forty-eight Minutes Thirty-seven Seconds (N 00°48'37") West Five Hundred Twenty-four and Three Hundredths feet (524.03'); thence North Eighty-four Degrees Forty-nine Minutes Twenty-four Seconds (N 84°49'24") East Three Hundred and Fifty-eight Hundredths feet (300.58'); thence South Sixty-four Degrees Seven Minutes Twenty-two Seconds (S 64°07'22") East One Hundred Twenty-five and Twenty-seven Hundredths feet (125.27'); thence South Eighty-nine Degrees Thirty Minutes Eighteen Seconds (S 89°30'18") East Three Hundred Thirteen and Nineteen Hundredths feet (313.19') to the East line of the Southeast Quarter (SE $\frac{1}{4}$); thence South Zero Degrees Zero Minutes Zero Seconds (S 00°00'00") West Five Hundred Two and Four Hundredths feet (502.04') to the point of beginning, containing 8.63 acres.

In consideration of the approval of the Plat of Fauth Addition to Woodbury County, Iowa, I agree as follows:

1. To impose a recorded covenant on Franklin Avenue agreeing to an assessment on the above described property in the event Franklin Avenue is hard surfaced and graded for that purpose (the Improvement).
2. At the time of the Improvement, the then owners, their successors, and assigns shall be assessed collectively a maximum of sixty percent (60%) of the total actual cost of the Improvement to the centerline of Franklin Avenue. The centerline to be fifty percent (50%) of the total Improvement of said roadway, therefore, the effective collective assessment against the above described real estate will be a

maximum of thirty percent (30%) of the total actual cost of the improvements abutting said real estate.

3. The collective assessment shall be individually prorated to the above described real estate on the basis of the number of lineal feet on which each separately owned parcel abuts said roadway and the respective owners shall have the responsibility for the assessment only on the parcel located within the above described real estate that he/she or it may own.
4. In the event the statutes, ordinance or ordinances existing at the time of the Improvements result in a lower assessment against the above described real estate, then the lower amount shall be assessed.

Dated this _____ day of _____, 2014.

LORNE J. FAUTH

SUBSCRIBED and **SWORN** to before me by Lorne J. Fauth, a single person on this _____ day of _____, 2014.

NOTARY PUBLIC



Woodbury County Secondary Roads Department

759 E. Frontage Road • Merville, Iowa 51039
Telephone (712) 279-6484 • (712) 873-3215 • Fax (712) 873-3235

COUNTY ENGINEER
Mark J. Nahra, P.E.
mnahra@sioux-city.org

ASSISTANT TO THE COUNTY ENGINEER
Benjamin T. Kusler, E.I.T.
bkusler@sioux-city.org

SECRETARY
Tish Brice
tbrice@sioux-city.org

Date: September 11, 2014
TO: Board of Supervisors
FROM: Mark Nahra, County Engineer
RE: Tuesday, September 16, 2014 Meeting

I am requesting the following agenda items for the Board's consideration.

- Receive and consider quotation for a hydraulic excavator submitted, but not opened last week
- Consider approval of a permit for utilities in the right of way for the Schaller telephone
- Consider approval of plans for 240th Street extension project L-G-240 ST(2014)—73-97
- Consider approval of plans for grading project to replace bridge P6 (special bridge levy project)

RUBBER TIRED HYDRAULIC EXCAVATOR

September 9, 2014

	Sheehan Mack Sales & Equipment, Inc.	Ziegler Caterpillar	Murphy Tractor & Equipment	Murphy Tractor & Equipment
	901 E. 60th Street North	5300 Harbor Drive	4900 Harbor Drive	4900 Harbor Drive
	P.O. Box 5130 (57117)	Sioux City, IA 51111-1114	Sioux City, IA 51111	Sioux City, IA 51111
	Sioux Falls, SD 57104			
Trade In Machine	1996 Gradall 4100XL	1996 Gradall 4100XL	1996 Gradall 4100XL	1996 Gradall 4100XL
Brand Name & Model	Volvo EW210D	Cat M322D	2014 John Deere 220D W Wheeled Excavator	2012 w/354 hours John Deere 220D W Wheeled Excavator
Purchase Price of Machine	\$ 255,470.00	\$ 276,815.00	\$ 257,100.00	\$ 203,400.00
Less Trade	\$ 22,000.00	\$ 13,500.00	\$ 10,200.00	\$ 10,200.00
Net Price of Machine	\$ 233,470.00	\$ 263,315.00	\$ 246,900.00	\$ 193,200.00
Options:				
36" General Excavation Bucket	\$3,835.00	\$8,390.00	\$4,588.00	\$4,588.00
60" Ditch Cleaning Bucket	\$5,254.00	\$6,831.00	\$3,677.00	\$3,677.00
Hydraulic Tree Shear	\$30,044.00	\$46,625.00	\$21,882.00	\$21,882.00

PERMIT FOR USE OF COUNTY ROAD/HIGHWAY RIGHT-OF-WAY
FOR OVERHEAD AND/OR BURIED UTILITIES ACCOMMODATION

REQUEST BY APPLICANT:

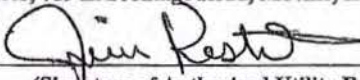
Name SCHALLER TELEPHONE COMPANY Highway _____
 Address 111 W 2ND St. SCHALLER, IA 51053 Township KEDRON
 Office Phone 712-275-4211 Local Phone _____ City of CORRECTIONVILLE
 Section: 3 1/4 of NE 1/4 Sec 2 NW NE
 Type of Utility Installation Directional bore fiber optic cable 88 N, R 43 W
 Plans Prepared By Jim Kestel Copy Enclosed Yes _____ No
 Map Showing Location Enclosed Yes _____ No
 Utility Location is _____ cross right-of-way & _____ parallel to right-of-way
 _____ overhead _____ underground

Proposed Method of Installation

_____ tunnel	_____ suspend on poles	_____ cased
<input checked="" type="checkbox"/> jack & bore	_____ suspend on towers	_____ trench
_____ open cut	_____ plow	

Estimated Starting Date 9-15-14 Estimated Restoration Date 11-15-14

The Applicant understands and agrees that the permitted work shall comply with all permit provisions and conditions listed on the reverse side hereof, and special provisions listed below or attached hereto, and any and all plans, details, or notes attached hereto and made a part thereof. Applicant is to complete in triplicate and send all copies including plans and maps to Woodbury County Engineer, 759 E. Frontage Road, Merville, IA 51039. One executed copy will be returned to the Applicant.

By  Title Outside Plant Mgr.
 (Signature of Authorized Utility Representative)

Date 9-10-14

PERMIT APPROVAL BY PERMITTING AUTHORITY

The forgoing application is hereby approved and permit issued by the Permitting Authority subject to full compliance by the Applicant with all provisions and conditions stated herein and on the reverse side hereof and all attachments hereto.

By _____ Title _____
 (Signature of Woodbury County Board Chairman)

Date _____

By _____ Title _____
 (Signature of Woodbury County Engineer)

Date _____

Other Special Provisions:

Permit Provisions and Conditions of Issuance

- The County and/or the County Board of Supervisors will not be charged with any responsibility for damages to the Applicant's property occasioned by any construction or maintenance operations on said county roads, including new or additional right-of-way acquired in connection therewith, subsequent to the building of the Applicant's facilities. The Board will endeavor to give the Applicant sufficient notice of any proposed construction or maintenance work, on either existing or newly acquired right-of-way that is likely to expose, cover up, or disturb any facilities belonging to the Applicant, in order that the Applicant may arrange to protect the facilities. The Board will inform contractors, and others working on the job of the location of the facilities so that reasonable care may be taken to avoid damaging the facilities, however the County and the Board of Supervisors will assume no responsibility for failure to give such notice.

2. The Applicant shall take all reasonable precaution during the construction of said facilities to protect and safeguard the lives and property of the adjacent property owners and the traveling public and shall save the County and the Board of Supervisors harmless of any damages or losses that may be sustained by adjacent property owners and the traveling public on account of such construction operations.
3. Operations in the construction and maintenance of said facilities shall be carried on in such a way as to not interfere with, or interrupt traffic on said roads. However, should the performance of work called for in this permit in any way interfere with or obstruct traffic on said roads, the Applicant shall provide the necessary flagmen as required by the Statutes when one-way traffic is involved and/or otherwise mark said work so as to protect the traveling public.
4. The Applicant shall hold the County and the Board of Supervisors harmless from any damages that may result to said highway because of the construction or maintenance of said facilities and shall reimburse the County or the Board of Supervisors for any expenditures that the County or the Board of Supervisors may have to make on said roads on account of replacement of surfacing gravel and bridge and culvert repairs.
5. Applicant shall lay, construct, operate and maintain said facilities so as not to interfere with natural drainage of the road and so as not to interfere with the construction or maintenance of said roads. When buried cable or wire lines are to be placed lengthwise with the roadway, they shall be placed in the County road shoulder or ditch near the toe of the fore-slope and parallel to centerline of roadbed at a depth of three (3) to four (4) feet by using specially designed plows or by trenching, whichever is appropriate. Plow slots and trenches shall be repacked as necessary to restore the disturbed area to its original condition. For buried line crossings of roadways not paved, an open trench may be dug and the lines placed therein, and the trench back-filled over the lines. Buried line crossings on paved roadways, lines may be placed through the sub-grade by jacking, or by boring a hole just large enough to take the lines; or if the County Engineer approves, a tunnel may be dug through and the cable or wire lines placed therein. All backfill of tunnels and trenches shall be thoroughly compacted in layers of 6" or less in depth. Back-filling of trenches within the right-of-way by not under the traveled roadway shall be tamped sufficiently to avoid settlement. When crossing an existing roadway, all buried facilities shall be placed a minimum of three (3) to four (4) below the bottom of the existing adjacent ditches. Overhead lines, where practical, shall be placed adjacent to and with two (2) feet of the Road/Highway Right-of-Way Line.
6. The Applicant will at any time subsequent to placing the facilities, and at the Applicant's expense, relay, replace, alter, change, reconstruct, or relocate its overhead and/or buried facilities and appurtenances thereto as may become necessary to conform to new grades, alignment, or widening right-of-way, resulting from maintenance or construction operations by the County Board of Supervisors irrespective of whether or not additional right-of-way is acquired in connection with such road improvements. The Applicant agrees to do this within ninety (90) days written notice from the Board of Supervisors, and without cost to the County. If the Applicant is unable to comply within said ninety (90) days, the Board of Supervisors may cause the work to be done and the Applicant will pay the cost thereof upon receipt of statement.
7. All work shall be done in a workmanlike manner; the surrounding ground, slopes, and ditch bottoms shall be reshaped to conform to the area and left in a neat condition satisfactory to the County Engineer. All areas where sod has been damaged or destroyed shall be re-seeded.
8. The Applicant shall notify the County Board of Supervisors at least forty-eight (48) hours in advance of the Applicant's intention of starting work covered by this permit on the road right-of-way. Said notice shall be in writing to the County Engineer.
9. Applicant, its' successors, grantees and assigns shall and hereby agrees to assume all responsibility, risks and liabilities for all accidents and damages that may occur to persons and/or property on account of the work done under this permit, and to this end, indemnify and hold the County and all authorized representatives thereof harmless from any and all claims, damages, losses, and expense including judgements, costs and including attorney's fees, for personal injuries (including death) or property damage arising or resulting from the activities of the Applicant in connection herewith, now and at all times in the future.
10. It is understood that this permit is issued only insofar as Woodbury County has jurisdiction and does not presume to release the Applicant from fulfilling any existing statutes relating to the installation, construction and operation of said facilities.
11. It is further understood that the facilities covered by this permit shall be constructed or installed within one (1) year after the date of approval of this permit, unless otherwise extended in writing by Woodbury County.
12. Engagement in the operations as herein applied for by the Applicant shall be considered and constitute an acceptance of all the terms and conditions herein set forth.

Schaller Telephone Company

111 West Second Street
P.O. Box 9
Schaller, Iowa 51053



Phone: (712) 275-4211
Fax: (712) 275-4121

Woodbury County, Kedron Twp., T-88-N, R-43-W
Section 3, N.E. Section 2, NW NE

Section 3 N.E. accessing handhole at the S.E. corner of Michigan Ave. and 160th St. (D22), directional bore 200' east in the south backslope of D22 encasing 36 fiber in 1 1/4" innerduct maintaining a 5 foot depth. Going north-east on the southeast shoulder of Michigan Ave.

Section 2 NW, NE - Continue east on the south and west shoulder of 155th St, placing a handhole in the west backslope of 155th St. across from 4063 155th St. Directional bore from handhole placement to east side of 155th St. existing handhole.

Vibrate plow maintaining minimum depth of 3 feet, 3 to 4 feet from the road shoulder edge. Directional bore all road crossings and culverts encasing 36 fiber in 1 1/4" duct.

See attached map for further details.

CERTIFICATION AS TO COMPLETION OF WORK
AND FINAL ACCEPTANCE BY THE BOARD OF SUPERVISORS
WOODBURY COUNTY, IOWA

PROJECT NO. PAVEMENT MARKING 2014

This is certify that work covered by contract entered into with

Vogel Traffic Services

Of Orange City, Iowa under the date of July 29, 2014

Pavement marking on various roads in Woodbury County

Contract Amount: **\$50,303.10**

in Woodbury County was completed in accordance with the plans and specifications

therefore, and in a satisfactory manner on **August 18, 2014**

September 16, 2014 By _____
Date County Engineer

Approved: Board of Supervisors
Woodbury County, Iowa

September 16, 2014 By _____
Date Chairperson



Federal Emergency Management Agency

Washington, D.C. 20472

CERTIFIED MAIL
RETURN RECEIPT REQUESTED

IN REPLY REFER TO:
115-I

September 2, 2015

Larry Clausen
Chairperson, Board of Supervisors
620 Douglas Street, Room 104
Sioux City, Iowa 51101

Community: Woodbury County, Iowa
(Unincorporated Areas)
Community No.: 190536
Map Panels Affected: See FIRM Index

Dear Mr. Clausen:

On June 28, 2013, you were notified of proposed modified flood hazard determinations (FHDs) affecting the Flood Insurance Rate Map (FIRM) and Flood Insurance Study (FIS) report for the Unincorporated Areas of Woodbury County. The statutory 90-day appeal period that was initiated on December 20, 2013, when the Department of Homeland Security's Federal Emergency Management Agency (FEMA) published a notice of proposed FHDs for your community in the Sioux City Journal, has elapsed.

FEMA received no valid requests for changes in the FHDs. Therefore, the determination of the Agency as to the FHDs for your community is considered final. The final FHDs will be published in the *Federal Register* as soon as possible. The modified FHDs and revised map panels, as referenced above, will be effective as of March 2, 2015, and revise the FIRM that were in effect prior to that date. For insurance rating purposes, the community number and new suffix code for the panels being revised are indicated above and on the maps and must be used for all new policies and renewals.

The modifications are pursuant to Section 206 of the Flood Disaster Protection Act of 1973 (Public Law 93-234) and are in accordance with the National Flood Insurance Act of 1968, as amended (Title XIII of the Housing and Urban Development Act of 1968, Public Law 90-448), 42 U.S.C. 4001-4128, and 44 CFR Part 65. Because of the modifications to the FIRM and FIS report for your community made by this map revision, certain additional requirements must be met under Section 1361 of the 1968 Act, as amended, within 6 months from the date of this letter. Prior to March 2, 2015, your community is required, as a condition of continued eligibility in the National Flood Insurance Program (NFIP), to adopt or show evidence of adoption of floodplain management regulations that meet the standards of Paragraph 60.3(d) of the NFIP regulations. These standards are the minimum requirements and do not supersede any State or local requirements of a more stringent nature.

It must be emphasized that all the standards specified in Paragraph 60.3(d) of the NFIP regulations must be enacted in a legally enforceable document. This includes the adoption of the effective FIRM and FIS report to which the regulations apply and the modifications made by this map revision. Some of the standards should already have been enacted by your community. Any additional requirements can be met by taking one of the following actions:

1. Amending existing regulations to incorporate any additional requirements of Paragraph 60.3(d);
2. Adopting all the standards of Paragraph 60.3(d) into one new, comprehensive set of regulations; or

3. Showing evidence that regulations have previously been adopted that meet or exceed the minimum requirements of Paragraph 60.3(d).

Communities that fail to enact the necessary floodplain management regulations will be suspended from participation in the NFIP and subject to the prohibitions contained in Section 202(a) of the 1973 Act as amended.

A Consultation Coordination Officer (CCO) has been designated to assist your community with any difficulties you may be encountering in enacting the floodplain management regulations. The CCO will be the primary liaison between your community and FEMA. For information about your CCO, please contact:

Mr. Michael R. Scott
Director, Federal Insurance and Mitigation Division
Federal Emergency Management Agency, Region VII
9221 Ward Parkway, Suite 300
Kansas City, MO 64114-3324
(816) 283-7004

To assist your community in maintaining the FIRM, we reviewed our records to determine if any previous Letters of Map Change (i.e., Letters of Map Amendment, Letters of Map Revision) will be superseded when the revised FIRM panels become effective. According to our records, no Letters of Map Change were issued previously for the affected FIRM panels.

If you have any questions regarding the necessary floodplain management measures for your community or the NFIP in general, we urge you to call the Director, Mitigation Division of FEMA in Kansas City, Missouri, at (816) 283-7002 for assistance. If you have any questions concerning mapping issues in general, please call FMIX at the number shown above. Additional information and resources your community may find helpful regarding the NFIP and floodplain management, such as *The National Flood Insurance Program Code of Federal Regulations*, *Answers to Questions About the NFIP*, *Use of Flood Insurance Study (FIS) Data as Available Data*, *Frequently Asked Questions Regarding the Effect that Revised Flood Hazards have on Existing Structures*, and *National Flood Insurance Program Elevation Certificate and Instructions*, can be found on our website at <http://www.floodmaps.fema.gov/lfd>. Paper copies of these documents may also be obtained by calling our FMIX.

Sincerely,



Luis Rodriguez, P.E., Chief
Engineering Management Branch
Federal Insurance and Mitigation Administration

cc: Community Map Repository
John Pylelo, Director, Planning and Zoning, Woodbury County

Join us for Business After Hours



Thursday,
September 18

4:30 pm - 6:30 pm

515 Pavonia St. • Sioux City, IA

Hors d'oeuvres and beverages provided
by Sioux City Journal Communications.

Celebrating 150 Years in Siouxland!

Siouxland
Chamber
of Commerce

WOODBURY COUNTY JUVENILE DETENTION CENTER

Trosper-Hoyt Bldg
822 Douglas St - 4th Floor
Sioux City, Iowa 51101

Phone 712-279-6622
Email: molten@sioux-city.org
Fax 712-234-2900

6:00 a.m.

6:00 p.m.

September

September 1, 2014		10
September 2, 2014	10	10
September 3, 2014	10	12
September 4, 2014	13	14
September 5, 2014	14	14
September 6, 2014	14	14
September 7, 2014	14	14
September 8, 2014	14	

The Center averaged 12.7 residents per day during the 6:00 a.m. head count and 12.6 during the 6:00 p.m. check for a weekly average of 12.7 residents per day during the above week.

Of the fourteen residents detained on September 8, 2014, seven or fifty percent were identified gang members. Of the seven, three or forty three percent were identified as hard-core members.

We are currently detaining seven juveniles from the BIA and one from Dakota County.

Mark Olsen

Director
WCJDC

September 8, 2014

WOODBURY COUNTY JAIL WEEKLY POPULATION REPORT

<u>DATE</u>	<u>Day</u>	<u>DAILY TOTAL</u>	<u>LEC</u>	<u>ELECTRONIC MONITORING</u>	<u>PRAIRIE HILLS</u>	<u>FEDERAL PRISONERS</u>
9/6/14	Saturday	214	203	11	0	2
9/7/14	Sunday	215	204	11	0	2
9/8/14	Monday	210	199	11	0	2
9/9/14	Tuesday	213	188	10	15	2
9/10/14	Wednesday	211	185	12	14	2
9/11/14	Thursday	212	186	12	14	2
9/12/14	Friday	207	181	12	14	2
		1482	1346	79	57	14