



**NOTICE OF MEETING OF THE WOODBURY COUNTY BOARD OF SUPERVISORS  
(MARCH 10, 2015) (WEEK 11 OF 2015)**

Agenda and Minutes also available at  
[www.woodburyiowa.com](http://www.woodburyiowa.com)

Larry D. Clausen  
389-5329  
[lclausen@sioux-city.org](mailto:lclausen@sioux-city.org)

Mark A. Monson  
204-1015  
[mark@mudflap.com](mailto:mark@mudflap.com)

Jaclyn D. Smith  
898-0477  
[jasmith435@cableone.net](mailto:jasmith435@cableone.net)

Jeremy J. Taylor  
259-7910  
[jeremytaylor@cableone.net](mailto:jeremytaylor@cableone.net)

Matthew A. Ung  
490-7852  
[matthewung@sioux-city.org](mailto:matthewung@sioux-city.org)

You are hereby notified a meeting of the Woodbury County Board of Supervisors will be held March 10, 2015 at **4:30 p.m.** in the Basement of the Courthouse, 620 Douglas Street, Sioux City, Iowa for the purpose of taking official action on the agenda items shown hereinafter and for such other business that may properly come before the Board.

This is a formal meeting during which the Board may take official action on various items of business. If you wish to speak on an item, please follow the seven participation guidelines adopted by the Board for speakers.

1. Anyone may address the Board on any agenda item after initial discussion by the Board.
2. Speakers will approach the microphone one at a time and be recognized by the Chair.
3. Speakers will give their name, spell their name, and give their address and then their statement.
4. Everyone will have an opportunity to speak. Therefore, please limit your remarks to **three minutes on any one item.**
5. At the beginning of the discussion on any item, the Chair may request statements in favor of an action be heard first followed by statements in opposition to the action.
6. Any concerns or questions you may have which do not relate directly to a scheduled item on the agenda will also be heard under the final agenda item "Citizen Concerns."
7. For the benefit of all in attendance, please turn off all cell phones and other devices while in the Board Chambers.

---

**AGENDA**

- 4:30 p.m.**
- |   |             |
|---|-------------|
| 1. Call Meeting to Order – Pledge of Allegiance to the Flag – Moment of Silence                   |             |
| 2. Canvassing of Correctionville Special Election   |             |
| 3. Citizen Concerns   | Information |
| 4. Approval of the agenda (March 10, 2015)  | Action      |
| 5. Approval of the minutes of March 3, 2015 meeting   | Action      |
| 6. Discussion and approval of claims  | Action      |
| 7. Human Resource – Ed Gilliland  |             |
| a. Approval of Memorandum of Personnel Transactions   | Action      |
| b. Authorize Chairman to Sign Authorization to Initiate Hiring Process                            | Action      |
| c. Approval of HIDTA Cross-Designated Employment Agreement for Attorney                           | Action      |
| d. Approval of Resolution Thanking and Commending Lonnie Gustafson for Service to Woodbury County | Action      |

- 5:00 p.m.**  
(Set time)
8. a. Public Hearing on Proposed Fiscal Year 2016 Budget
  - b. Discussion and Action on Compensation Board Recommendations Elected Officials Salaries for Fiscal Year 2016 Action
  - c. Discussion and Adoption of Fiscal Year 2016 County Budget Action
  
  9. Siouxland District Health – Kevin Grieme  
    Re: Approval of Appointment to Siouxland District Board of Health Action
  
  10. Approval of Appointment to the Judicial Magistrate Nomination Commission Action
  
  11. Board Administration – Karen James
    - a. Approval of Resolution Approving Petition for Suspension of Taxes Through the Redemption Process for C. R. Action
    - b. Approval of Resolution Approving Petition for Suspension of Taxes Through the Redemption Process for G. I. Action
    - c. Approval of Resolution for Notice of Property Sale Action
  
  12. County Sheriff – Dave Drew  
    Discussion and Action to Proceed with the Pay Your Jailer Program Action
  
  13. Building Services – Mark Elgert  
    Update on Elevator Situation Discussion
  
  14. Secondary Roads – Mark Nahra  
    Consider approval to work in the Right of Way (R.O.W.) for Midamerican Energy for the relocation of a 161 kV transmission line along the East Side of K45 (Old Hwy 75). Relocation of the transmission line extends from 240<sup>th</sup> Street South to 260<sup>th</sup> Street. The transmission line will be utilizing a private utility easement to the East of the Woodbury County R.O.W. line. Work in the R.O.W. required to remove existing transmission line. Action
  
  15. Reports on committee meetings Information
  
  16. Citizen's Concerns Information
  
  17. Board Concerns and Comments Information

## ADJOURNMENT

*Subject to Additions/Deletions*



## CALENDAR OF EVENTS

<b>TUESDAY, MARCH 10</b>	<b>8:30 a.m.</b> District Board of Health Meeting, 1014 Nebraska St.
	<b>10:00 a.m.</b> Senior Center Board of Directors Meeting, 313 Cook Street
<b>WEDNESDAY, MARCH 11</b>	<b>8:05 a.m.</b> Woodbury County Information Communication Commission, Board of Supervisors' Chambers
	<b>6:30 p.m.</b> 911 Service Board Meeting, Public Safety Center, Climbing Hill
	<b>8:00 p.m.</b> County's Mayor Association Meeting, Public Safety Center, Climbing Hill
<b>THURSDAY, MARCH 12</b>	<b>7:00 p.m.</b> Siouxland Mental Health Center, Board Meeting, 625 Court Street
	<b>12:00 p.m.</b> SIMPCO Board of Directors, 1122 Pierce St, Sioux City
	<b>5:00 p.m.</b> Conservation Board Meeting, Dorothy Pecaut Nature Center, Stone Park
<b>TUESDAY, MARCH 17</b>	<b>4:30 p.m.</b> Community Action Agency of Siouxland Board Meeting, 2700 Leech Avenue
<b>WEDNESDAY, MARCH 18</b>	<b>12:00 noon</b> Siouxland Economic Development Corporation Meeting, 617 Pierce St., Ste. 202, Sioux City, Iowa
	<b>6:30 p.m.</b> Woodbury County Solid Waste Agency (Sanitary Landfill) Executive Committee Meeting, Public Safety Center, Climbing Hill
<b>THURSDAY, MARCH 19</b>	<b>11:00 a.m.</b> Siouxland Regional Transit Systems (SRTS) Board Meeting, SIMPCO Office, 1122 Pierce St., Sioux City, Iowa
<b>MONDAY, MARCH 23</b>	<b>6:00 p.m.</b> Zoning Commission Meeting, Board of Supervisors' Chambers
	<b>7:30 p.m.</b> Fair Board Meeting, Woodbury County Fair Office, Fairgrounds, Merville, Iowa.
<b>WEDNESDAY, APRIL 1</b>	<b>12:00 noon</b> District Board of Health Meeting, 1014 Nebraska St.
<b>THURSDAY, APRIL 2</b>	<b>5:00 p.m.</b> Conservation Board Meeting, Dorothy Pecaut Nature Center, Stone Park
<b>MONDAY, APRIL 6</b>	<b>6:00 p.m.</b> Board of Adjustment meeting, Board of Supervisors' Chambers
<b>TUESDAY, APRIL 7</b>	<b>4:00 p.m.</b> Veteran Affairs Meeting, Veteran Affairs Office, 1211 Tri-View Ave.

**Woodbury County is an Equal Opportunity Employer. In compliance with the Americans with Disabilities Act, the County will consider reasonable accommodations for qualified individuals with disabilities and encourages prospective employees and incumbents to discuss potential accommodations with the Employer.**

Federal and state laws prohibit employment and/or public accommodation discrimination on the basis of age, color, creed, disability, gender identity, national origin, pregnancy, race, religion, sex, sexual orientation or veteran's status. If you believe you have been discriminated against, please contact the Iowa Civil Rights Commission at 800-457-4416 or Iowa Department of Transportation's civil rights coordinator. If you need accommodations because of a disability to access the Iowa Department of Transportation's services, contact the agency's affirmative action officer at 800-262-0003.

#5

**MARCH 3, 2015 — NINETH MEETING OF THE WOODBURY COUNTY BOARD OF SUPERVISORS**

The Board of Supervisors met on Tuesday, March 3, 2015 at 4:30 p.m. Board members present were Clausen, Ung, Monson, Taylor, and Smith. Staff members present were Karen James, Board Administrator, Dennis Butler, Finance/Operations Controller, Joshua Widman, Assistant County Attorney, and Jean Jessen, Deputy Auditor/Clerk to the Board.

1. The meeting was called to order – Pledge of Allegiance to the Flag – Moment of Silence.
2. Citizen concerns.  
  
Lindsay Oller, Sales Representative, Adventfs.com presented information on how the PayMyJailer program could be an option for recovering revenue for booking, boarding and other fees from jail inmates. Copy filed.
3. Motion by Taylor second by Ung to approve the Agenda for March 3, 2015. Carried 5-0. Copy filed.
4. Motion by Taylor second by Ung to approve the minutes of the 02/24/2015 Board meeting. Carried 5-0. Copy filed.
5. Motion by Taylor second by Ung to approve the county's claims totaling \$438,891.37. Carried 5-0. Copy filed.
6. Motion by Ung second by Smith to approve the appointment of Wesley Reuter, Sheriff Reserve Volunteer, County Sheriff Dept., effective 2-10-15, \$1.00/year. Per Iowa Code 80D.11.; the separation of Kayne Weaver, Civilian Jailer, County Sheriff Dept., effective 3-1-15. Resignation.; the appointment of Steven Hughes, Equipment Operator, Secondary Roads Dept., effective 3-4-15, \$20.71/hour. Job vacancy posted 12-10-14. Entry level salary: \$20.71/hour., the reclassification of Laura Kinnaman, Custodian, Building Services Dept., effective 3-18-15, \$15.73/hour, 6%=\$.93/hr. Per AFSCME Courthouse Contract agreement, from Grade 1/Step 3 to Grade 1/Step 4., and the reclassification of Kayla Vondromme, P/T Youth Worker, Juvenile Detention Dept., effective 3-19-15, \$17.86/hour, 3.8%=\$.67/hr. Per AFSCME Juvenile Detention Contract agreement, from Grade 1/Step 1 to Grade 1/Step 2. Carried 5-0. Copy filed.
7. Motion by Taylor second by Monson that the parking stalls configuration at the Tri-View building be changed, that on the short side of the building from left to right the first spot be a handicap van placement, the second be a normal handicap car placement, the third be a Veterans Affairs Customers Parking Only with a notice to tow, and the fourth be designated "No Parking" AND that the first two spots on the long side of the building (SW corner parallel to Hamilton) be designated "Veterans Affairs Customers Parking Only" with a notice to tow. Carried 4-1; Clausen was opposed. Copy filed.
8. Motion by Taylor second by Ung to apportion the monthly utilities at the Tri-View building by square footage usage; 74% to Social Services and 25% to Veterans Affairs. Carried 4-1; Clausen was opposed.
9. Motion by Ung second by Clausen to designate the Auditor's office to investigate the money listed in the Great Iowa Treasurer Hunt. Carried 5-0.
10. Motion by Monson second by Ung to approve a work agreement with McClure Engineering for services. Carried 3-0; Clausen and Smith opposed. Copy filed.
11. Motion by Taylor second by Ung to approve Woodbury County Emergency Services to apply for and accept the 2015 Missouri River Historical Development Grant. Carried 2-0; Clausen, Monson and Smith abstained.
12. Motion by Taylor second by Ung to approve a standard form format for a request to be on the Agenda. Carried 5-0. Copy filed.
13. The repair on both elevators in the County Courthouse for \$155,000, for each elevator, was postponed until next week.
14. Reports on committee meetings.



15. Citizen's concerns.

16. Board concerns and comments.

The Board adjourned the regular meeting until March 10, 2015.

# HUMAN RESOURCES DEPARTMENT

## MEMORANDUM OF PERSONNEL TRANSACTIONS

**DATE:** March 10, 2015

**\* PERSONNEL ACTION CODE:**

- |                 |                      |
|-----------------|----------------------|
| A - Appointment | R - Reclassification |
| T - Transfer    | E - End of Probation |
| P - Promotion   | S - Separation       |
| D - Demotion    | O - Other            |

**TO: WOODBURY COUNTY BOARD OF SUPERVISORS**

NAME	DEPARTMENT	EFFECTIVE DATE	JOB TITLE	SALARY REQUESTED	% INCREASE	*	REMARKS
Weitzel, Jason	Building Services	3-12-15	Custodian	\$14.09/hour		A	Job Vacancy Posted 1-28-15. Entry Level Salary: \$13.44-\$14.80/hour.
Fields, Kayse	Social Services	3-28-15	Case Manager	\$21.44/hour	6%=\$1.26/hr.	R	Per Wage Plan Matrix, 3 year Salary Increase.

**APPROVED BY BOARD DATE:** \_\_\_\_\_

**GLORIA MOLLET, ASST. HR DIRECTOR** *Gloria Mollet*

# 7a



**WOODBURY COUNTY  
HUMAN RESOURCES DEPARTMENT**

**MEMORANDUM**

**TO:** Board of Supervisors and the Taxpayers of Woodbury County

**FROM:** Ed Gilliland, Human Resources Director  
Gloria Mollet, Human Resources Assistant Director  
*gm*

**RE:** Memorandum of Personnel Transactions

**DATE:** March 10, 2015

For the March 10, 2015 meeting of the Board of Supervisors and the Taxpayers of Woodbury County the Memorandum of Personnel Transactions will include:

- 1) Building Services Custodian Appointment.
- 2) Social Services Case Manager, 3 year Salary Increase.

Thank you.

#76

HUMAN RESOURCES DEPARTMENT  
WOODBURY COUNTY, IOWA

D

AUTHORIZATION TO INITIATE HIRING PROCESS

DEPARTMENT	POSITION	ENTRY LEVEL	APPROVED	DISAPPROVED
County Sheriff	Civilian Jailer	CWA Civilian Officers Contract: \$17.14/hour		
	*Please See Attached Memo of Explanation.			

\_\_\_\_\_  
Chairman, Board of Supervisors





# Woodbury County Sheriff's Office

---

LAW ENFORCEMENT CENTER  
P. O. BOX 3715 SIOUX CITY, IOWA 51102

DAVID A. DREW, SHERIFF

PHONE: 712.279.6010  
E-MAIL: [ddrew@sioux-city.org](mailto:ddrew@sioux-city.org)  
FAX: 712.279.6522

February 5<sup>th</sup>, 2015

David A. Drew-Sheriff  
Ed Gilliland-HR Director

Good day,

Correctional Officer Kayne Weaver has resigned his position with the Woodbury County Sheriff's Office Jail Division, effective March 1<sup>st</sup>, 2015. Kayne has accepted a position with the South Dakota State Patrol. Sheriff Dave Drew is requesting HR Director Gilliland begin the Board approved application process to fill the opening with a qualified candidate.

Officer Weaver is an excellent employee and we wish him the very best in his future endeavors.

Greg Stallman, Major

**WOODBURY COUNTY BOARD OF SUPERVISORS AGENDA ITEM(S) REQUEST FORM**

Date: 3-5-15

Weekly Agenda Date: 3-10-15

DEPARTMENT HEAD / CITIZEN: Ed Gilliland

SUBJECT: HIDTA Cross-Designated Employment Agreement for Attorney

**ACTION REQUIRED:**

Approve Ordinance

Approve Resolution

Approve Motion

Give Direction

Other: Informational

Attachments

**WORDING FOR AGENDA ITEM:** HIDTA Cross-Designated Employment Agreement for Attorney

**EXECUTIVE SUMMARY:**

**BACKGROUND:** The United States Attorney's Office for the Northern District of Iowa and an attorney licensed in the states of Minnesota and Iowa and appointed by the United States Attorney's Office as a Special Assistant U.S. Attorney pursuant to the Midwest High Intensity Drug Trafficking Areas. The Midwest HIDTA Special Assistant United States Attorney Initiative is designed to enhance the resources of the U.S. Attorney's office to ensure that additional methamphetamine cases are aggressively prosecuted at the federal or state level.

**FINANCIAL IMPACT:** No financial impact since this position is contingent upon total funding from the Midwest High Intensity Drug Trafficking Areas (HIDTA) program with the U.S. Attorney's Office as a Special Assistant U.S. Attorney.

**RECOMMENDATION:** To approve the agreement for employment of the Woodbury County Attorney to fill this position. This position is contingent upon total funding from the Midwest HIDTA program.

**ACTION REQUIRED:** To approve the agreement for employment of this individual.

#7c

Approved by Board of Supervisors March 3, 2015.



**CROSS-DESIGNATED EMPLOYMENT AGREEMENT  
PURSUANT TO THE MIDWEST HIDTA (HIGH INTENSITY DRUG TRAFFICKING AREAS)  
PROGRAM**

This Agreement entered into this 4<sup>th</sup> day of March, 2015, between Woodbury County, Iowa and the Woodbury County Attorney (hereinafter referred to as "County"), the United States Attorney's Office for the Northern District of Iowa (hereinafter referred to as "U.S."), and Nathan Nelson, an attorney licensed in the State(s) of Minnesota and duly appointed by the United States Attorney's Office as a Special Assistant U.S. Attorney (hereinafter referred to as "Nelson") pursuant to the Midwest High Intensity Drug Trafficking Areas (HIDTA). The Midwest HIDTA Special Assistant United States Attorney (SAUSA) Initiative is designed to enhance the resources of the U.S. Attorney's office to ensure that additional methamphetamine cases are aggressively prosecuted at the federal or state level. The Midwest HIDTA funded SAUSA under this agreement will be cross-designated to assist state prosecutors (County) in addition to the U.S.

**WITNESSETH, IN CONSIDERATION** of the mutual undertakings and agreements hereinafter set forth, County, U.S., and Nelson, contingent upon total funding from the Midwest HIDTA program, agree as follows:

**I. NELSON AGREES TO:**

A. Services. Shall provide to the U. S. Attorney's Office, on a full-time basis, his/her services, as a competent, licensed attorney to serve as an Assistant Woodbury County Attorney and a Special Assistant United States Attorney for the Northern District of Iowa and as such, assist the U.S, Attorney's Office in aggressively prosecuting methamphetamine and other drug-related cases and perform other duties as may be designated by U.S, in fulfilling its duties and responsibilities pursuant to the terms of the HIDTA program.

B. Resignation. Nelson shall notify the County and his immediate supervisor at the U.S. Attorney's Office at least thirty (30) days prior to the desired date of resignation.

C. At Will Employee. Nelson hereby agrees that his appointment and employment as an Assistant Woodbury County Attorney and as a Special Assistant United States Attorney for the Northern District of Iowa are at will and such appointments and employment may be terminated at any time by the County or U.S. without cause. The foregoing shall apply and prevail notwithstanding any other policies or practices, written or verbal, of County or U.S. to the contrary.

## II. U.S. AGREES TO:

A. Performance Reviews. The immediate supervisor of Nelson at the U.S. Attorney's Office will conduct annual performance appraisals based upon a comparison of job performance and job expectations as set forth by U.S. Performance appraisals must be completed during March 1 - May 31 of each-fiscal year and a copy provided to County by May 31. Nelson shall not participate in any County merit pay plan and performance appraisals of Nelson shall not be the basis for a salary increase under any County merit pay plan.

B. Administrative Assistance. Provide the necessary administrative assistance, including but not limited to, office space, office equipment, support staff, and supplies, to SAUSA as may be necessary to allow Nelson to perform his duties as designated by U.S. Attorney's Office. U.S. shall absorb all costs related thereto.

C. Reimbursement to County. The Midwest HIDTA Northern Iowa SAUSA Initiative falls under the direction of the United States Attorney. These programs are responsible for reimbursing the County for all expenses related to the employment of Nelson, including salary, benefits and other expenses. Reimbursement is processed through the funds assigned to the HIDTA specifically for the SAUSA Initiatives. The County shall submit application for reimbursement to the U.S. for all funds paid to Nelson in the form of salary, benefits, and other expenses on a monthly basis. Upon review the U.S. will forward the



approved applications to the appropriate entities for reimbursement to be paid by the appropriate entities directly to the County. The County shall provide necessary accounting information directly to HIDTA program staff for the appropriate reimbursement through direct deposit.

### III. COUNTY AGREES TO:

A. Salary. Pay to Nelson for services provided as set forth in Section I(A) of this Agreement and as designated by U.S., an annual salary of \$80,000. Said salary may be increased during the term of this Agreement at the sole discretion of U.S. The Midwest HIDTA Northern Iowa SAUSA Initiative falls under the direction of the United States Attorney. These programs are responsible for reimbursing the County for all expenses related to the employment of Nelson, including salary, benefits and other expenses. Reimbursement is processed through the funds assigned to the HIDTA Program, specifically for the SAUSA initiatives. The County shall submit application for reimbursement to the U.S. for all funds paid to Nelson in the form of salary, benefits, and other expenses on a monthly basis. Upon review, the U.S. will forward the approved applications to the appropriate entities for reimbursement to be paid by the appropriate entities directly to the County. The County shall provide necessary accounting information directly to HIDTA program staff for the appropriate reimbursement through direct deposit.

B. Benefits. For purposes of this Agreement, Nelson shall at all times be designated a full-time employee of Woodbury County, Iowa as defined by Chapter 20 of the Code of Iowa, and as an employee of County, shall be entitled to the following County benefits of employment:

1. Paid Leave Policy. The Paid Leave Policy combines the benefits of paid sick leave, vacation and personal days. The Paid Leave Policy is comprised of (1) accrued Sick Days and (2) Long Term Disability for Illness/Injury Leave. Nelson's vacation and personal leave accumulation at the time of implementation of the Policy will be as set forth in the County's Policies and Procedures for Management, Attorneys and Confidential Personnel, dated July 1, 2013 - June 30, 2016, Paid Leave Policy Section, Pages 11-17,

and by this reference incorporated herein as if set forth verbatim herein. This policy does not supersede any federal laws including the Family and Medical Leave Act (FMLA). See, Family and Medical Leave Act section as set forth in the County's Policies and Procedures for Management, Attorneys and Confidential Personnel, dated July 1, 2013 - June 30, 2016, Family and Medical Leave Act, Pages 11-17, and by this reference incorporated herein as if set forth verbatim herein.

2. Holidays. There shall be eleven (11) regular paid holidays each calendar year. The parties agree that the days Nelson utilizes as the paid holidays shall be adjusted to coincide with the legal holidays observed by the U.S. Attorney's Office.

3. Other Leave. Nelson shall be entitled to the Family and Medical Leave Act, Military Leave, Court and Jury Leave, Bereavement Leave, Professional Leave and On-the-Job Injuries Leave benefits provided to County employees as set forth in the County's Policies and Procedures for Management, Attorneys and Confidential Personnel, dated July 1, 2011 - June 30, 2012, Pages 13-14, and by this reference incorporated herein as if set forth verbatim herein.

4. Group Insurance. Nelson shall be offered the County's group health, dental and life insurance policies as set forth in the Group Insurance section of the County's Policies and Procedures for Management, Attorneys and Confidential Personnel, dated July 1, 2012 - June 30, 2013, Pages 11-17, and by this reference incorporated herein as if set forth verbatim herein.

#### IV. ADMINISTRATION:

U.S. shall defend, save harmless and indemnify County, its elected officials, employees, and agents against any and all claims or demands, for, or in connection with, any accident, injury, death or damage, whatsoever, caused to any person or property arising, directly or indirectly, out of Nelson's acts or omissions, undertaken in the performance of this Agreement. This agreement to defend, save harmless, and indemnify shall apply whether or not County and/or U.S. is a party to the action and shall include,



but not be limited to, cases arising under Title 42 United States Code Section 1983.

This Agreement, as set forth in Sections I through VI herein, constitutes the entire agreement amongst County, U.S. and Nelson concerning Nelson's appointment and employment as an Assistant Woodbury County Attorney and appointment as a Special Assistant United States Attorney for the Northern District of Iowa. Representations made by anyone on behalf of County or U.S., and any policies or practices of County or U.S., verbal or written, are not binding. No party has relied upon any such representations, policies or practices in entering into this Agreement. Any change or alteration to the terms of this Agreement must be in the form of an addendum to the Agreement. Said addendum shall be effective only upon written approval of County and U.S.

It is the policy of the U.S. Attorney's Office and County to achieve a drug-free workplace that Nelson shall be required to pass a drug test to screen for illegal drug use prior to final appointment. Employment is contingent upon the satisfactory completion of a background investigation by the U.S. Attorney's Office.

The parties agree that Nelson shall exercise no authority as an Assistant Woodbury County Attorney, independent of his authority as a Special Assistant United States Attorney of the Northern District of Iowa, including but not limited to initiation of state criminal prosecutions, without the express consent of the Woodbury County Attorney.

**V. TERM OF THIS AGREEMENT:**

1 This Agreement shall commence on/about \_\_\_\_\_, and shall be in effect until on/about \_\_\_\_\_, unless terminated earlier by any party to this Agreement.

2. This Agreement shall terminate of its own accord and without further notice should NELSON no longer occupy the position of Special Assistant U.S. Attorney or Assistant Woodbury County Attorney for any reason.

3. If County fails to receive sufficient appropriation of funds or authorization for the expenditure of sufficient funds to continue employment pursuant to the terms of this agreement, County may submit a written notice to U.S. and Nelson seeking termination of this agreement. The County shall provide U.S. and Nelson with notice not less than thirty (30) days prior to the date of termination, and shall include a written statement documenting the reason for termination and including a document certifying the non-availability of funds.

VI. EFFECTIVE DATE:

This Agreement shall be effective upon its execution by the parties, retroactive to the commencement of the Agreement term as provided herein.

IN WITNESS WHEREOF, the parties hereto have set their hands for the purposes herein expressed to this instrument, as of the dates below indicated.

WOODBURY COUNTY, IOWA

BY:

BY:

\_\_\_\_\_  
CHAIRPERSON, WOODBURY  
COUNTY BOARD OF SUPERVISORS

\_\_\_\_\_  
WOODBURY COUNTY ATTORNEY

\_\_\_\_\_  
Date

\_\_\_\_\_  
Date

UNITED STATES ATTORNEY FOR THE NORTHERN DISTRICT OF IOWA

BY:

\_\_\_\_\_  
UNITED STATES ATTORNEY

\_\_\_\_\_  
Date

BY:

\_\_\_\_\_  
NATHAN NELSON

\_\_\_\_\_  
Date

**WOODBURY COUNTY BOARD OF SUPERVISORS AGENDA ITEM(S) REQUEST FORM**

Date: 3-5-15

Weekly Agenda Date: 3-10-15

DEPARTMENT HEAD / CITIZEN: Lonnie Gustafson

SUBJECT: Resolution

**ACTION REQUIRED:**

Approve Ordinance

Approve Resolution

Approve Motion

Give Direction

Other: Informational

Attachments

**WORDING FOR AGENDA ITEM:** Resolution

**EXECUTIVE SUMMARY:**

**BACKGROUND:** Lonnie Gustafson has demonstrated himself to be an outstanding citizen of Woodbury County by leading the Circle and Swing Square Dance Group as a long time caller for those who daily overcome intellectual disabilities.

**FINANCIAL IMPACT:**

**RECOMMENDATION:** Presentation to Lonnie Gustafson

**ACTION REQUIRED:**

#7d

*Approved by Board of Supervisors March 3, 2015.*



# WOODBURY COUNTY, IOWA



RESOLUTION NO. 001

A RESOLUTION THANKING AND COMMENDING

**Lonnie Gustafson**

FOR YOUR SERVICE TO WOODBURY COUNTY

WHEREAS, Lonnie Gustafson has demonstrated himself to be an outstanding citizen of Woodbury County by leading the Circle and Swing Square Dance Group as a long time caller for those who daily overcome intellectual disabilities; and

WHEREAS, your service as a Woodbury County citizen, has been characterized by your dedication to the best interests of the citizens of Woodbury County;

NOW THEREFORE, BE IT RESOLVED BY THE BOARD OF SUPERVISORS OF WOODBURY COUNTY, IOWA that the undersigned members of the Board thank and commend you for your years of service to Woodbury County; and

BE IT FURTHER RESOLVED that it is the wish of all those signing below that the future hold only the best for this very deserving person, Lonnie Gustafson.

BE IT SO RESOLVED this 10<sup>th</sup> day of March, 2015.

WOODBURY COUNTY BOARD OF SUPERVISORS

---

Mark A. Monson, Chairman

---

Jaclyn D. Smith, Member

---

Larry D. Clausen, Member

---

Jeremy J. Taylor, Member

---

Matthew A. Ung, Member

---

Attest: Patrick F. Gill, Woodbury County Auditor



**ADOPTION OF BUDGET & CERTIFICATION OF TAXES**  
Fiscal Year July 1, 2015 - June 30, 2016

Budget Basis GAAP

Iowa Department of Management  
03-10-2015  
County Name: Woodbury  
County Number: 97  
Date Budget Adopted: \_\_\_\_\_

At the meeting of the Board of Supervisors of this County, held after the public hearing as required by law, on the date specified above and to the right, the proposed budget for the fiscal year listed above was adopted as summarized and attached hereto, and tax levies, as itemized below, were approved for all taxable property of this County.

Note: Utility Tax Replacements are estimated by subtracting the amounts produced in Column T from the amounts entered in Column P. The software performs this calculation and places the budget-year estimated Utility Tax Replacement amounts on line 11 of the Revenues Detail sheet.

There is attached a Long-Term Debt Schedule (Form 703) for the debt service needs, if any.

Maximum County Mental Health and Disabilities Services (MHDS) Fund (Information Only):

1M Base Year Expenditures for Mental Health/Disabilities Services	3,564,086
2M County Population Expenditure Target Amount	4,828,706
3M Any Medicaid Offset Reduction	0
4M Maximum County MHDS Fund Levy Dollars	3,564,086

4M is the lesser of 1M and 2M minus any Medicaid Offset Reduction

Certification of Mental Health and Disabilities Services Fund Levy Dollars:

3M Enter County MHDS Fund Levy Dollars (cannot exceed 4M above)

	(P) UTILITY REPLACEMENT AND PROPERTY TAX DOLLARS	(Q) VALUATION WITH GAS & ELEC UTILITIES	(R) LEVY RATE	(S) VALUATION WITHOUT GAS & ELEC UTILITIES	(T) PROPERTY TAXES LEVIED
<b>A. Countywide Levies:</b>					
1 General Basic		3,639,890,644	3,564,086	3,278,601,250	
2 General Basic	12,739,617		3.5		11,475,104
3 + Cemetery (Pioneer - 331.424B)			0		0
4 = Total for General Basic	12,739,617				11,475,104
5 Emerg Mgmt Dollars Included Above in Gen Basic-Info Only for Tax Statement					0
6 General Supplemental	10,281,164		2.82458		9,260,672
7 Emerg Mgmt Dollars Included Above in Gen Supp-Info Only for Tax Statement	107,900				97,178
8 County MHDS Fund (from '5M' certification above)	3,564,086		0.97917		3,210,308
9 Debt Service (from Form 703 col. 1 Countywide total)	857,313	4,036,412,249	0.21239	3,675,122,855	780,559
10 Voted Emergency Medical Services (Countywide)			0		0
11 Other (specify)			0		0
12 <b>Subtotal Countywide (A)</b>	27,442,180		7.51614		24,726,643
<b>B. All Rural Services Only Levies:</b>		1,050,067,459		817,834,280	
13 Rural Services Basic	3,691,766		3.51574		2,875,293
14 Rural Services Supplemental			0		0
15 Unified Law Enforcement			0		0
16 Other (specify)			0		0
17 Other (specify)			0		0
18 <b>Subtotal All Rural Services Only (B)</b>	3,691,766		3.51574		2,875,293
19 <b>Subtotal Countywide/All Rural Services (A + B)</b>	31,133,946		11.03188		27,601,936
<b>C. Special District Levies:</b>					
20 Flood & Erosion		0	0	0	0
21 Voted Emergency Medical Services (partial county)		0	0	0	0
22 Other (specify)	0	0	0	0	0
23 Other (specify)		0	0	0	0
24 Other (specify)		0	0	0	0
25 Other (specify)		0	0	0	0
26 Township ES Levies (Summary from Form 638-RE)		0	0	0	0
27 <b>Subtotal Special Districts (C)</b>		0		0	0
28 <b>GRAND TOTAL (A + B + C)</b>	31,133,946				27,601,936

Compensation Schedule for FY:  
Elected Official:  
Attorney  
Auditor  
Recorder  
Treasurer  
Sheriff  
Supervisors  
Supervisor Vice Chair, if different  
Supervisor Chair, if different

2015/2016 Annual Salary

Number of Official County Newspapers: 3

- Names of Official County Newspapers:
- The Sioux City Journal
  - The Moxville Record
  - The Sergeant Bluff Advocate
  - 
  - 
  -

**The County Auditor represents the following to be true:**

- \_\_\_ The prescribed Budget Public Hearing Notice and Proposed Budget Estimate (Form 630) was lawfully published in all official newspapers, with said publication(s) being individually evidenced by verified and filed proof(s) of publication. If applicable, there was lawful publication of any rates exceeding statutory maximums.
- \_\_\_ All budget hearing notices were published not less than 10 days, nor more than 20 days, prior to the budget hearing.
- \_\_\_ Adopted property taxes do not exceed published amounts.
- \_\_\_ Adopted expenditures do not exceed published amounts for any of the 10 individual expenditure classes, or in total.
- \_\_\_ This budget was certified on or before March 15 unless otherwise documented to the Department of Management.

Board Chairperson (signature) \_\_\_\_\_

County Auditor (signature) \_\_\_\_\_



COUNTY NAME:	NOTICE OF PUBLIC HEARING – BUDGET ESTIMATE	CO NO:
Woodbury	Fiscal Year July 1, 2015 - June 30, 2016	97

The County Board of Supervisors will conduct a public hearing on the proposed Fiscal Year County budget as follows:

Meeting Date:	Meeting Time:	Meeting Location:
03-10-2015	5:00 pm	Board of Supervisors, Courthouse Basement

At the public hearing any resident or taxpayer may present objections to, or arguments in favor of, any part of the proposed budget. This notice represents a summary of the supporting detail of revenues and expenditures on file with the County Auditor. A copy of the supporting detail will be furnished upon request.

Average annual percentage changes between "Actual" and "Budget" amounts for "Taxes Levied on Property", "Other County Taxes/TIF Tax Revenues", and for each of the ten "Expenditure Classes" must be published. Expenditure classes proposing "Budget" amounts, but having no "Actual" amounts, are designated "NEW".

County Web Site (if available):	County Telephone Number:
	712-234-2910

Iowa Department of Management Form 630 (Publish)	Budget 2015/2016	Re-Est 2014/2015	Actual 2013/2014	AVG Annual % CHG
<b>REVENUES &amp; OTHER FINANCING SOURCES</b>				
Taxes Levied on Property*	1 27,601,936	28,333,075	27,035,428	1.04
Less: Uncollected Delinquent Taxes - Levy Year	2 0			
Less: Credits to Taxpayers	3 998,504	880,775	1,075,735	
Net Current Property Taxes	4 26,603,432	27,452,300	25,959,693	
Delinquent Property Tax Revenue	5 15,500	8,700	-253,733	
Penalties, Interest & Costs on Taxes	6 406,000	422,500	386,553	
Other County Taxes/TIF Tax Revenues	7 6,620,789	5,920,872	5,766,349	7.15
Intergovernmental	8 11,473,634	11,280,857	10,552,536	
Licenses & Permits	9 37,250	30,550	645,024	
Charges for Service	10 2,444,498	2,275,300	2,693,688	
Use of Money & Property	11 233,592	265,292	352,265	
Miscellaneous	12 303,004	266,400	816,955	
<b>Subtotal Revenues</b>	13 48,137,699	47,922,771	46,919,330	
Other Financing Sources:				
General Long-Term Debt Proceeds	14 1,095,500	839,000	845,000	
Operating Transfers In	15 9,165,690	8,674,970	8,085,760	
Proceeds of Fixed Asset Sales	16 0			
<b>Total Revenues &amp; Other Sources</b>	17 58,398,889	57,436,741	55,850,090	
<b>EXPENDITURES &amp; OTHER FINANCING USES</b>				
Operating:				
Public Safety and Legal Services	18 15,569,411	14,063,336	13,700,876	6.6
Physical Health and Social Services	19 5,068,312	5,516,778	5,420,019	-3.3
Mental Health, ID & DD	20 4,780,782	4,596,329	4,993,564	-2.15
County Environment and Education	21 2,550,200	2,481,277	2,380,294	3.51
Roads & Transportation	22 8,255,200	7,839,500	6,932,727	9.12
Government Services to Residents	23 2,489,021	2,454,960	2,296,383	4.11
Administration	24 6,235,512	6,832,579	5,893,990	2.86
Nonprogram Current	25 20,000	20,000	28,420	-16.11
Debt Service	26 1,069,776	1,114,677	1,030,292	1.9
Capital Projects	27 5,569,177	6,041,583	2,219,078	58.42
<b>Subtotal Expenditures</b>	28 51,607,391	50,961,019	44,895,643	
Other Financing Uses:				
Operating Transfers Out	29 9,165,690	8,674,970	8,085,760	
Refunded Debt/Payments to Escrow	30 0			
<b>Total Expenditures &amp; Other Uses</b>	31 60,773,081	59,635,989	52,981,403	
<b>Excess of Revenues &amp; Other Sources over (under) Expenditures &amp; Other Uses</b>	32 -2,374,192	-2,199,248	2,868,687	
Beginning Fund Balance - July 1,	33 15,628,185	17,827,433	14,958,746	
Increase (Decrease) in Reserves (GAAP Budgeting)	34 0			
Fund Balance - Nonspendable	35 1,732,423	1,035,000	942,263	
Fund Balance - Restricted	36 6,728,758	8,457,500	11,031,311	
Fund Balance - Committed	37 0	975,240	864,086	
Fund Balance - Assigned	38 0			
Fund Balance - Unassigned	39 4,792,812	5,160,445	4,989,773	
<b>Total Ending Fund Balance - June 30,</b>	40 13,253,993	15,628,185	17,827,433	

Proposed property taxation by type:	Proposed tax rates per \$1,000 taxable valuation:
Countywide Levies*: 24,726,643	Urban Areas: 7.51614
Rural Only Levies*: 2,875,293	Rural Areas: 11.03188
Special District Levies*: 0	Any special district tax rates not included.
TIF Tax Revenues: 125,779	Date: 03-10-2015
Utility Replacmnt. Excise Tax: 3,532,010	

Explanation of any significant items in the budget:



**Woodbury County PROPOSED BUDGET SUMMARY**

03-10-2015

						TOTALS				
	General (A)	Special Revenue (B)	Capital Projects (C)	Debt Service (D)	Permanent (E)	Budget	Re-estimated	Actual		
						2015/2016 (F)	2014/2015 (G)	2013/2014 (H)		
<b>REVENUES &amp; OTHER FINANCING SOURCES</b>										
Taxes Levied on Property	1	20,735,776	6,085,601		780,559				1	
Less: Uncollected Delinquent Taxes - Levy Year	2	0	0			0			2	
Less: Credits to Taxpayers	3	771,553	226,951			998,504	880,775	1,075,735	3	
Net Current Property Taxes	4	19,964,223	5,858,650		780,559	26,603,432	27,452,300	25,959,693	4	
Delinquent Property Tax Revenue	5	15,000	500			15,500	8,700	-253,733	5	
Penalties, Interest & Costs on Taxes	6	406,000				406,000	422,500	386,553	6	
Other County Taxes/TIF Tax Revenues	7	2,748,005	3,796,030	0	76,754	0	6,620,789	5,920,872	5,766,349	7
Intergovernmental	8	4,770,689	6,702,945	0	0	0	11,473,634	11,280,857	10,552,536	8
Licenses & Permits	9	1,250	36,000				37,250	30,550	645,024	9
Charges for Service	10	2,134,050	310,448				2,444,498	2,275,300	2,693,688	10
Use of Money & Property	11	171,092	62,500				233,592	265,292	352,265	11
Miscellaneous	12	83,400	219,604				303,004	266,400	816,955	12
<b>Subtotal Revenues</b>	13	30,293,709	16,986,677	0	857,313	0	48,137,699	47,922,771	46,919,330	13
Other Financing Sources:										
General Long-Term Debt Proceeds	14	0	0	1,095,500			1,095,500	839,000	845,000	14
Operating Transfers In	15	6,243,865	2,665,054	150,000	106,771	0	9,165,690	8,674,970	8,085,760	15
Proceeds of Fixed Asset Sales	16	0	0				0			16
<b>Total Revenues &amp; Other Sources</b>	17	36,537,574	19,651,731	1,245,500	964,084	0	58,398,889	57,436,741	55,850,090	17
<b>EXPENDITURES &amp; OTHER FINANCING USES</b>										
Operating:										
Public Safety and Legal Services	18	14,345,059	1,224,352			0	15,569,411	14,063,336	13,700,876	18
Physical Health and Social Services	19	5,068,312	0			0	5,068,312	5,516,778	5,420,019	19
Mental Health, ID & DD	20	1,216,696	3,564,086			0	4,780,782	4,596,329	4,993,564	20
County Environment and Education	21	1,681,227	868,973			0	2,550,200	2,481,277	2,380,294	21
Roads & Transportation	22	0	8,255,200			0	8,255,200	7,839,500	6,932,727	22
Government Services to Residents	23	2,275,973	213,048			0	2,489,021	2,454,960	2,296,383	23
Administration	24	6,213,318	22,194			0	6,235,512	6,832,579	5,893,990	24
Nonprogram Current	25	20,000	0			0	20,000	20,000	28,420	25
Debt Service	26	0	0		1,069,776	0	1,069,776	1,114,677	1,030,292	26
Capital Projects	27	283,341	4,040,336	1,245,500		0	5,569,177	6,041,583	2,219,078	27
<b>Subtotal Expenditures</b>	28	31,103,926	18,188,189	1,245,500	1,069,776	0	51,607,391	50,961,019	44,895,643	28
Other Financing Uses:										
Operating Transfers Out	29	6,043,145	3,122,545	0	0	0	9,165,690	8,674,970	8,085,760	29
Refunded Debt/Payments to Escrow	30	0	0				0			30
<b>Total Expenditures &amp; Other Uses</b>	31	37,147,071	21,310,734	1,245,500	1,069,776	0	60,773,081	59,635,989	52,981,403	31
<b>Excess of Revenues &amp; Other Sources over (under) Expenditures &amp; Other Uses</b>	32	-609,497	-1,659,003	0	-105,692	0	-2,374,192	-2,199,248	2,868,687	32
Beginning Fund Balance - July 1,	33	6,220,434	8,629,922	454,312	287,856	35,661	15,628,185	17,827,433	14,958,746	33
Increase (Decrease) in Reserves (GAAP Budgeting)	34	0	0				0			34
Fund Balance - Nonspendable	35	0	1,732,423				1,732,423	1,035,000	942,263	35
Fund Balance - Restricted	36	1,182,614	4,874,007	454,312	182,164	35,661	6,728,758	8,457,500	11,031,311	36
Fund Balance - Committed	37	0	0				0	975,240	864,086	37
Fund Balance - Assigned	38	0	0				0			38
Fund Balance - Unassigned	39	4,428,323	364,489	0	0	0	4,792,812	5,160,445	4,989,773	39
<b>Total Ending Fund Balance - June 30,</b>	40	5,610,937	6,970,919	454,312	182,164	35,661	13,253,993	15,628,185	17,827,433	40

Proposed tax rate per \$1,000 valuation for County purposes: 7.51614 urban areas; 11.03188 rural areas; Any special district rates excluded. \_\_\_\_\_  
This line and the next line reserved for notes:





REVENUES DETAIL

	GENERAL FUND			SPECIAL REVENUE FUNDS					All Capital Projects (I)	All Debt Service (J)	All Permanent (K)	TOTALS				
	General Basic (A)	General Supplemental (B)	General Other (C)	County MHDS Fund (D)	Rural Services Basic (E)	Rural Services Supplemental (F)	Secondary Roads (G)	Other (H)				Budget 2015/2016 (L)	Re-estimated 2014/2015 (M)	Actual 2013/2014 (N)		
TAXES LEVIED ON PROPERTY	1	11,475,104	9,260,672		3,210,308	2,875,293	0		0		780,559		27,601,936	28,333,075	27,035,428	1
LESS: UNCOLL. DEL. TAXES LEVY YEAR	2												0			2
LESS: CREDITS TO TAXPAYERS	3	407,562	363,991		129,558	97,393							998,504	880,775	1,075,735	3
=1000 NET CURRENT PROPERTY TAXES	*4	11,067,542	8,896,681		3,080,750	2,777,900	0		0		780,559		26,603,432	27,452,300	25,959,693	*4
1010 DELINQ. PROPERTY TAX REVENUE	*5	10,000	5,000			500							15,500	8,700	-253,733	*5
11xx PENALTIES, INT. & COSTS ON TAXES	*6	406,000											406,000	422,500	386,553	*6
OTHER COUNTY TAXES/TIF REVENUES:																
12xx Other County Taxes	7	16,000	12,000										28,000	28,000		7
13xx Local Option Taxes	8						2,000,000	500,000					2,500,000	2,370,000	2,536,358	8
14xx Gambling Taxes	9			435,000									435,000	250,000	184,325	9
15xx TIF Tax Revenues	10								125,779				125,779	56,827		10
16xx Utility Replacement Excise Taxes	11	1,264,513	1,020,492		353,778	816,473	0		0		76,754		3,532,010	3,216,045	3,045,666	11
Subtotal (lines 7 - 11)	*12	1,280,513	1,032,492	435,000	353,778	816,473	0	2,000,000	625,779	0	76,754	0	6,620,789	5,920,872	5,766,349	*12
INTERGOVERNMENTAL REVENUE:																
20xx State Shared Revenues	13	13,000						4,246,857					4,259,857	4,019,947	4,975,869	13
21xx State Replacements Against Levied Taxes	14	407,562	363,991		129,558	97,393							998,504	880,775	1,075,735	14
22xx Other State Tax Replacements	15	365,887	326,773			25,999							718,659	656,687	11,322	15
23xx, 24xx State/Federal Pass-thru Revenues	16												0	1,157,051		16
25xx Contributions From Other Intergovernmental Units	17	480,302	612,275						82,235				1,174,812	1,137,930	1,007,318	17
26xx, 27xx State Grants and Entitlements	18	405,710	419,000					1,678,903	42,000				2,545,613	3,172,467	584,830	18
28xx Federal Grants and Entitlements	19	159,493		1,216,696				400,000					1,776,189	256,000	2,897,462	19
29xx Payments in Lieu of Taxes	20												0			20
Subtotal (lines 13 - 20)	*21	1,831,954	1,722,039	1,216,696	129,558	123,392	0	6,325,760	124,235	0	0	0	11,473,634	11,280,857	10,552,536	*21
3xxx LICENSES & PERMITS	*22	1,250				25,000		11,000					37,250	30,550	645,024	*22
4xxx, 5xxx CHARGES FOR SERVICE	*23	2,134,050							310,448				2,444,498	2,275,300	2,693,688	*23
6xxx USE OF MONEY & PROPERTY	*24	171,092						30,000	32,500				233,592	265,292	352,265	*24
8xxx MISCELLANEOUS	*25	83,400						130,618	88,986				303,004	266,400	816,955	*25
Total Revenues*	26	16,985,801	11,656,212	1,651,696	3,564,086	3,743,265	0	8,497,378	1,181,948	0	857,313	0	48,137,699	47,922,771	46,919,330	26
OTHER FINANCING SOURCES:																
OPERATING TRANSFERS IN:																
9000 From General Basic	27												0			27
9020 From Rural Services Basic	28							2,328,000					2,328,000	2,504,407	1,028,000	28
90xx From Other Budgetary Funds	29	6,064,615		179,250		171,174			165,880	150,000	106,771		6,837,690	6,170,563	7,057,760	29
Subtotal (lines 27 - 29)	30	6,064,615	0	179,250	0	171,174	0	2,328,000	165,880	150,000	106,771	0	9,165,690	8,674,970	8,085,760	30
91xx PROCEEDS/GEN LONG-TERM DEBT	31									1,095,500			1,095,500	839,000	845,000	31
92xx PROCEEDS/GEN FIXED ASSET SALES	32												0			32
Total Revenues and Other Sources	33	23,050,416	11,656,212	1,830,946	3,564,086	3,914,439	0	10,825,378	1,347,828	1,245,500	964,084	0	58,398,889	57,436,741	55,850,090	33
BEGINNING FUND BALANCE JULY 1,	34	4,779,228	918,382	522,824	2,119,961	208,142		4,944,948	1,356,871	454,312	287,856	35,661	15,628,185	17,827,433	14,958,746	34
TOTAL RESOURCES	35	27,829,644	12,574,594	2,353,770	5,684,047	4,122,581	0	15,770,326	2,704,699	1,699,812	1,251,940	35,661	74,027,074	75,264,174	70,808,836	35
Loss on Nonreplaced Credits Against Levied Taxes	36	0	0		0	0	0		0		0		0	0	0	36



SERVICE AREA 1  
PUBLIC SAFETY AND LEGAL SERVICES

County Name: Woodbury

County No: 97  
03-10-2015

	GENERAL FUND			SPECIAL REVENUE FUNDS					All Permanent (K)	TOTALS				
	General Basic (A)	General Supplemental (B)	General Other (C)	County MHDS Fund (D)	Rural Services Basic (E)	Rural Services Supplemental (F)	Secondary Roads (G)	Other (H)		Budget	Re-estimated	Actual		
										2015/2016 (L)	2014/2015 (M)	2013/2014 (N)		
<b>LAW ENFORCEMENT PROGRAM</b>														
1000 - Uniformed Patrol Services	1	961,011			930,429						1,891,440	1,872,204	1,864,408	1
1010 - Investigations	2	603,726									603,726	567,769	805,844	2
1020 - Unified Law Enforcement	3										0			3
1030 - Contract Law Enforcement	4										0			4
1040 - Law Enforcement Communications	5	566,478									566,478			5
1050 - Adult Correctional Services	6	5,702,548									5,702,548	5,272,513	5,182,684	6
1060 - Administration	7	1,338,804	190,429					23,000			1,552,233	1,770,239	1,712,123	7
Subtotal	8	9,172,567	190,429	0	0	930,429	0	0	23,000	0	10,316,425	9,482,725	9,565,059	8
<b>LEGAL SERVICES PROGRAM</b>														
1100 - Criminal Prosecution	9	1,969,310		23,250							2,092,560	2,397,261	2,476,595	9
1110 - Medical Examinations	10	130,000									130,000	133,347	99,346	10
1120 - Child Support Recovery	11	621,664									621,664			11
Subtotal	12	2,720,974	0	23,250	0	0	0	0	100,000	0	2,844,224	2,530,608	2,575,941	12
<b>EMERGENCY SERVICES</b>														
1200 - Ambulance Services	13		643,994								814,917	802,399	561,119	13
1210 - Emergency Management	14										0			14
1220 - Fire Protection and Rescue Services	15										0			15
1230 - E911 Service Board	16										0			16
Subtotal	17	0	643,994	0	0	0	0	0	170,923	0	814,917	802,399	561,119	17
<b>ASSISTANCE TO DISTRICT COURT SYSTEM PROGRAM</b>														
1400 - Physical Operations	18		21,000								21,000	273,000		18
1410 - Research & Other Assistance	19										0			19
1420 - Bailiff Services	20		786,216								786,216	724,604	706,962	20
Subtotal	21	0	807,216	0	0	0	0	0	0	0	807,216	997,604	706,962	21
<b>COURT PROCEEDINGS PROGRAM</b>														
1500 - Juries & Witnesses	22		30,000								30,000	30,000	32,141	22
1510 - (Reserved)	23													23
1520 - Detention Services	24										0			24
1530 - Court Costs	25										0		23,047	25
1540 - Service of Civil Papers	26	531,629									531,629			26
Subtotal	27	531,629	30,000	0	0	0	0	0	0	0	561,629	30,000	55,188	27
<b>JUVENILE JUSTICE ADMINISTRATION PROGRAM</b>														
1600 - Juvenile Victim Restitution	28										0			28
1610 - Juvenile Representation Services	29										0	220,000	236,607	29
1620 - Court-Appointed Attorneys & Court Costs for Juveniles	30		225,000								225,000			30
Subtotal	31	0	225,000	0	0	0	0	0	0	0	225,000	220,000	236,607	31
<b>TOTAL - PUBLIC SAFETY &amp; LEGAL SERVICES</b>	32	12,425,170	1,896,639	23,250	0	930,429	0	0	293,923	0	15,569,411	14,063,336	13,700,876	32

**SERVICE AREA 3**  
**PHYSICAL HEALTH & SOCIAL SERVICES**

County Name: Woodbury County No. 97  
03-10-2015

	GENERAL FUND			SPECIAL REVENUE FUNDS					All Permanent (K)	TOTALS		
	General Basic (A)	General Supplemental (B)	General Other (C)	County MHDS Fund (D)	Rural Services Basic (E)	Rural Services Supplemental (F)	Secondary Roads (G)	Other (H)		Budget	Re-estimated	Actual
										2015/2016 (L)	2014/2015 (M)	2013/2014 (N)
<b>PHYSICAL HEALTH SERVICES PROGRAM</b>												
3000 - Personal & Family Health Services	1									0		1
3010 - Communicable Disease Prevention & Control Services	2									0		2
3020 - Sanitation	3									0		3
3040 - Health Administration	4	2,225,226								2,225,226	2,203,287	2,186,295
3050 - Support of Hospitals	5									0		5
Subtotal	6	2,225,226	0	0	0	0	0	0	0	2,225,226	2,203,287	2,186,295
<b>SERVICES TO POOR PROGRAM</b>												
3100 - Administration	7	148,725								148,725	146,950	147,286
3110 - General Welfare Services	8	109,700								109,700	112,200	75,062
3120 - Care in County Care Facility	9									0		9
Subtotal	10	258,425	0	0	0	0	0	0	0	258,425	259,150	222,348
<b>SERVICES TO MILITARY VETERANS PROGRAM</b>												
3200 - Administration	11	215,230								215,230	218,597	212,198
3210 - General Services to Veterans	12	42,000								42,000	50,000	30,424
Subtotal	13	257,230	0	0	0	0	0	0	0	257,230	268,597	242,622
<b>CHILDREN'S &amp; FAMILY SERVICES PROGRAM</b>												
3300 - Youth Guidance	14		2,324,931	2,500						2,327,431	2,392,945	2,191,751
3310 - Family Protective Services	15									0	186,925	486,455
3320 - Services for Disabled Children	16									0		16
Subtotal	17	0	2,324,931	2,500	0	0	0	0	0	2,327,431	2,579,870	2,678,206
<b>SERVICES TO OTHER ADULTS PROGRAM</b>												
3400 - Services to the Elderly	18									0	74,971	69,385
3410 - Other Social Services	19									0		21,163
3420 - Soc Serv Bus Operations	20									0		20
Subtotal	21	0	0	0	0	0	0	0	0	0	74,971	90,548
<b>CHEMICAL DEPENDENCY PROGRAM</b>												
3500 - Treatment Services	22									0	130,903	22
3510 - Preventive Services	23									0		23
Subtotal	24	0	0	0	0	0	0	0	0	0	130,903	0
<b>TOTAL-PHYSICAL HEALTH &amp; SOCIAL SERVICES</b>	25	2,740,881	2,324,931	2,500	0	0	0	0	0	5,068,312	5,516,778	5,420,019



**SERVICE AREA 4**  
**MENTAL HEALTH, INTELLECTUAL DISABILITY & DEVELOPMENTAL DISABILITIES**

County Name: Woodbury County No: 97  
03-10-2015

**SERVICES TO PERSONS WITH:**

	GENERAL FUND			SPECIAL REVENUE FUNDS					All Permanent (K)	TOTALS		
	General Basic (A)	General Supplemental (B)	General Other (C)	County MHDS Fund (D)	Rural Services Basic (E)	Rural Services Supplemental (F)	Secondary Roads (G)	Other (H)		Budget 2015/2016 (L)	Re-estimated 2014/2015 (M)	Actual 2013/2014 (N)
<b>40XX - MENTAL HEALTH PROBLEMS/ MENTAL ILLNESS</b>												
400X - Information & Education Services	1									0	350,000	1
402X - Coordination Services	2									0	181,971	69,895
403X - Personal & Environmental Sprt	3									0	17,500	3
404X - Treatment Services	4									0	1,474,418	1,469,981
405X - Vocational & Day Services	5									0	350,000	5
406X - Lic/Certified Living Arrangements	6									0	535,000	6
407X - Inst/Hospital & Commit Services	7									0	249,832	147,866
Subtotal	8	0	0	0	0	0	0	0	0	0	3,158,721	1,687,742
<b>41XX - CHRONIC MENTAL ILLNESS</b>												
410X - Information & Education Services	9									0		69,894
412X - Coordination Services	10									0		96,573
413X - Personal & Environmental Sprt	11									0		15,625
414X - Treatment Services	12									0		242,168
415X - Vocational & Day Services	13									0		13
416X - Lic/Certified Living Arrangements	14									0		14
417X - Inst/Hospital & Commit Services	15									0		784,006
Subtotal	16	0	0	0	0	0	0	0	0	0	0	1,208,266
<b>42XX - INTELLECTUAL DISABILITY</b>												
420X - Information & Education Services	17									0		170,474
422X - Coordination Services	18									0	25,450	963,124
423X - Personal & Environmental Sprt	19									0	17,500	15,625
424X - Treatment Services	20									0	21,000	17,884
425X - Vocational & Day Services	21									0		21
426X - Lic/Certified Living Arrangements	22									0		300
427X - Inst/Hospital & Commit Services	23									0		23
Subtotal	24	0	0	0	0	0	0	0	0	0	63,950	1,167,407
<b>43XX - OTHER DEVELOPMENTAL DISABILITIES</b>												
430X - Information & Education Services	25									0		25
432X - Coordination Services	26									0	69,200	56,537
433X - Personal & Environmental Sprt	27									0	1,500	1,300
434X - Treatment Services	28									0		28
435X - Vocational & Day Services	29									0	14,200	9,080
436X - Lic/Certified Living Arrangements	30									0		30
437X - Inst/Hospital & Commit Services	31									0		31
Subtotal	32	0	0	0	0	0	0	0	0	0	84,900	66,917
<b>44XX - GENERAL ADMINISTRATION</b>												
4411 - Direct Administration	33									0	200,907	38,968
4412 - Purchased Administration	34									0		790,055
4413 - Distrib to Regional Fiscal Agent	35				3,564,086					3,564,086		35
Subtotal	36	0	0	0	3,564,086	0	0	0	0	3,564,086	200,907	829,023
<b>45XX - COUNTY PRVD CASE MGMT</b>												
Subtotal	37			1,216,696						1,216,696		32,710
<b>46XX - COUNTY PRVD SERVICES</b>												
Subtotal	38									0	1,043,051	1,499
<b>47XX - BRAIN INJURY</b>												
470X - Information & Education Services	39									0		39
472X - Coordination Services	40									0	44,800	40
473X - Personal & Environmental Sprt	41									0		41
474X - Treatment Services	42									0		42
475X - Vocational & Day Services	43									0		43
476X - Lic/Certified Living Arrangements	44									0		44
477X - Inst/Hospital & Commit Services	45									0		45
Subtotal	46	0	0	0	0	0	0	0	0	0	44,800	0
<b>TOTAL - MENTAL HEALTH, ID &amp; DD</b>	47	0	0	1,216,696	3,564,086	0	0	0	0	4,780,782	4,596,329	4,993,564



SERVICE AREA 6  
COUNTY ENVIRONMENT AND EDUCATION

County Name: Woodbury County No: 97  
03-10-2015

	GENERAL FUND			SPECIAL REVENUE FUNDS					All Permanent (K)	TOTALS				
	General Basic (A)	General Supplemental (B)	General Other (C)	County MHDS Fund (D)	Rural Services Basic (E)	Rural Services Supplemental (F)	Secondary Roads (G)	Other (H)		Budget 2015/2016 (L)	Re-estimated 2014/2015 (M)	Actual 2013/2014 (N)		
<b>ENVIRONMENTAL QUALITY PROGRAM</b>														
6000 - Natural Resources Conservation	1				31,000					31,000	31,000	31,000	1	
6010 - Weed Eradication	2				97,622					97,622	74,022	73,343	2	
6020 - Solid Waste Disposal	3				190,872					190,872	190,872	190,872	3	
6030 - Environmental Restoration	4									0			4	
Subtotal	5	0	0	0	319,494	0	0	0	0	319,494	295,894	295,215	5	
<b>CONSERVATION &amp; RECREATION SERVICES PROGRAM</b>														
6100 - Administration	6	334,852		90,000				129,123		553,975	494,378	486,980	6	
6110 - Maintenance & Operations	7	910,944								910,944	890,447	870,263	7	
6120 - Recreation & Environmental Educ.	8	345,431								345,431	335,727	327,050	8	
Subtotal	9	1,591,227	0	90,000	0	0	0	129,123	0	1,810,350	1,720,552	1,684,293	9	
<b>ANIMAL CONTROL PROGRAM</b>														
6200 - Animal Shelter	10				7,067					7,067	7,067	6,135	10	
6210 - Animal Bounties & State Apiarist Expenses	11									0			11	
Subtotal	12	0	0	0	7,067	0	0	0	0	7,067	7,067	6,135	12	
<b>COUNTY DEVELOPMENT PROGRAM</b>														
6300 - Land Use & Building Controls	13				171,174					171,174	176,656	164,197	13	
6310 - Housing Rehabilitation & Develop.	14									0			14	
6320 - Economic Development	15									0			15	
Subtotal	16	0	0	0	171,174	0	0	0	0	171,174	176,656	164,197	16	
<b>EDUCATIONAL SERVICES PROGRAM</b>														
6400 - Libraries	17							242,115		242,115	257,480	206,826	17	
6410 - Historic Preservation	18									0			18	
6420 - Fair & 4-H Clubs	19									0	23,628	23,628	19	
6430 - Fairgrounds	20									0			20	
6440 - Memorial Halls	21									0			21	
6450 - Other Educational Services	22									0			22	
Subtotal	23	0	0	0	0	0	0	242,115	0	242,115	281,108	230,454	23	
<b>PRESIDENT OR GOVERNOR DECLARED DISASTERS PROGRAM</b>														
6500 - Property	24									0			24	
6510 - Buildings	25									0			25	
6520 - Equipment	26									0			26	
6530 - Public Facilities	27									0			27	
Subtotal	28	0	0	0	0	0	0	0	0	0	0	0	28	
<b>TOTAL - COUNTY ENVIRONMT. &amp; ED.</b>	29	1,591,227	0	90,000	0	497,735	0	0	371,238	0	2,550,200	2,481,277	2,380,294	29

**SERVICE AREA 7  
ROADS & TRANSPORTATION**

County Name: Woodbury County No: 97  
03-10-2015

	GENERAL FUND			SPECIAL REVENUE FUNDS					All Permanent (K)	TOTALS			
	General Basic (A)	General Supplemental (B)	General Other (C)	County MHDS Fund (D)	Rural Services Basic (E)	Rural Services Supplemental (F)	Secondary Roads (G)	Other (H)		Budget	Re-estimated	Actual	
										2015/2016 (L)	2014/2015 (M)	2013/2014 (N)	
<b>SECONDARY ROADS ADMINISTRATION &amp; ENGINEERING PROGRAM</b>													
7000 - Administration	1						288,425			288,425	22,800	19,001	1
7010 - Engineering	2						847,270			847,270	977,548	929,608	2
Subtotal	3	0	0	0	0	0	1,135,695	0	0	1,135,695	1,000,348	948,609	3
<b>ROADWAY MAINTENANCE PROGRAM</b>													
7100 - Bridges & Culverts	4						243,705			243,705	140,000	38,317	4
7110 - Roads	5						2,979,900			2,979,900	4,169,652	3,556,563	5
7120 - Snow & Ice Control	6						486,310			486,310	35,000		6
7130 - Traffic Controls	7						316,900			316,900	210,000	118,255	7
7140 - Road Clearing	8						244,000			244,000	1,000	45	8
Subtotal	9	0	0	0	0	0	4,270,815	0	0	4,270,815	4,555,652	3,713,180	9
<b>GENERAL ROADWAY EXPENDITURES PROGRAM</b>													
7200 - New Equipment	10						705,000			705,000	680,000	619,995	10
7210 - Equipment Operations	11						1,850,190			1,850,190	1,315,000	1,395,278	11
7220 - Tools, Materials & Supplies	12						203,500			203,500	198,500	190,127	12
7230 - Real Estate & Buildings	13						90,000			90,000	90,000	65,538	13
Subtotal	14	0	0	0	0	0	2,848,690	0	0	2,848,690	2,283,500	2,270,938	14
<b>MASS TRANSIT PROGRAM</b>													
7300 - Air Transportation	15									0			15
7310 - Ground Transportation	16									0			16
Subtotal	17	0	0	0	0	0	0	0	0	0	0	0	17
<b>TOTAL - ROADS &amp; TRANSPORTATION</b>	18	0	0	0	0	0	8,255,200	0	0	8,255,200	7,839,500	6,932,727	18

**SERVICE AREA 8  
GOVERNMENT SERVICES TO RESIDENTS**

County Name: Woodbury County No: 97  
03-10-2015

	GENERAL FUND			SPECIAL REVENUE FUNDS					All Permanent (K)	TOTALS				
	General Basic (A)	General Supplemental (B)	General Other (C)	County MHDS Fund (D)	Rural Services Basic (E)	Rural Services Supplemental (F)	Secondary Roads (G)	Other (H)		Budget	Re-estimated	Actual		
										2015/2016 (L)	2014/2015 (M)	2013/2014 (N)		
<b>REPRESENTATION SERVICES PROGRAM</b>														
8000 - Elections Administration	1	367,241								367,241	359,863	396,096	1	
8010 - Local Elections	2	198,945								198,945	190,850	198,522	2	
8020 - Township Officials	3				7,000					7,000	7,000	11,034	3	
Subtotal	4	0	566,186	0	0	7,000	0	0	0	573,186	557,713	605,652	4	
<b>STATE ADMINISTRATIVE SERVICES</b>														
8100 - Motor Vehicle Registrations & Licensing	5	1,062,603								1,062,603	1,058,870	1,033,699	5	
8101 - Drivers License Services	6									0			6	
8110 - Recording of Public Documents	7	647,184						206,048		853,232	838,377	657,032	7	
Subtotal	8	1,709,787	0	0	0	0	0	206,048	0	1,915,835	1,897,247	1,690,731	8	
<b>TOTAL - GOVT. SVCS. TO RESIDENTS</b>	9	1,709,787	566,186	0	0	7,000	0	0	206,048	0	2,489,021	2,454,960	2,296,383	9



**SERVICE AREA 9  
ADMINISTRATION**

	GENERAL FUND			SPECIAL REVENUE FUNDS					All Permanent (K)	TOTALS				
	General Basic (A)	General Supplemental (B)	General Other (C)	County MHDS Fund (D)	Rural Services Basic (E)	Rural Services Supplemental (F)	Secondary Roads (G)	Other (H)		Budget	Re-estimated	Actual		
										2015/2016 (L)	2014/2015 (M)	2013/2014 (N)		
<b>POLICY &amp; ADMINISTRATION PROGRAM</b>														
9000 - General County Management	1	648,551									648,551	660,395	602,059	1
9010 - Administrative Management Services	2	292,288									292,288	411,883	280,380	2
9020 - Treasury Management Services	3	598,540									598,540	573,095	558,959	3
9030 - Other Policy & Administration	4	543,758	35,496				22,194				601,448	476,908	313,232	4
Subtotal	5	2,083,137	35,496	0	0	0	22,194	0	0		2,140,827	2,122,281	1,754,630	5
<b>CENTRAL SERVICES PROGRAM</b>														
9100 - General Services	6	1,931,558	63,500								1,995,058	1,774,402	1,869,922	6
9110 - Information Technology Services	7	899,627									899,627	1,435,896	1,269,438	7
9120 - GIS Systems	8										0			8
Subtotal	9	2,831,185	63,500	0	0	0	0	0	0		2,894,685	3,210,298	3,139,360	9
<b>RISK MANAGEMENT SERVICES PROGRAM</b>														
9200 - Tort Liability	10		1,200,000								1,200,000	1,500,000	1,000,000	10
9210 - Safety of Workplace	11										0			11
9220 - Fidelity of Public Officers	12										0			12
9230 - Unemployment Compensation	13										0			13
Subtotal	14	0	1,200,000	0	0	0	0	0	0		1,200,000	1,500,000	1,000,000	14
<b>TOTAL - ADMINISTRATION</b>	15	4,914,322	1,235,496	63,500	0	0	22,194	0	0		6,235,512	6,832,579	5,893,990	15

SERVICE AREA 0

County Name:

Woodbury

County No. 97

NONPROGRAM EXPENDITURES, DISBURSEMENTS AND OTHER FINANCING USES

03-10-2015

	GENERAL FUND			SPECIAL REVENUE FUNDS					All Capital Projects (I)	All Debt Service (J)	All Permanent (K)	TOTALS					
	General Basic (A)	General Supplemental (B)	General Other (C)	County MHDS Fund (D)	Rural Services Basic (E)	Rural Services Supplemental (F)	Secondary Roads (G)	Other (H)				Budget	Re-estimated	Actual			
												2015/2016 (L)	2014/2015 (M)	2013/2014 (N)			
<b>NONPROGRAM CURRENT EXPENDITURES</b>																	
0010 - County Farm Operations	1											0			1		
0020 - Interest on Short-Term Debt	2											0			2		
0030 - Other Nonprogram Current	3	20,000										20,000	20,000	28,420	3		
0040 - Other County Enterprises	4											0			4		
<b>TOTAL - NONPROGRAM CURRENT</b>	5	20,000	0	0	0	0	0	0	0			0	20,000	20,000	28,420	5	
<b>LONG-TERM DEBT SERVICE</b>																	
0100 - Principal	6											984,400	984,400	1,046,800	6		
0110 - Interest	7											85,376	85,376	67,877	7		
<b>TOTAL - LONG-TERM DEBT SERVICE</b>	8	0	0	0	0	0	0	0	0			1,069,776	1,069,776	1,114,677	1,030,292	8	
<b>CAPITAL PROJECTS</b>																	
0200 - Roadway Construction	9							3,200,000						3,200,000	3,600,000	763,801	9
0210 - Conservation Land Acquisition/Dev	10													0			10
0220 - Other Capital Projects	11			283,341					840,336	1,245,500				2,369,177	2,441,583	1,455,277	11
<b>TOTAL - CAPITAL PROJECTS</b>	12	0	0	283,341	0	0	0	3,200,000	840,336	1,245,500		0	5,569,177	6,041,583	2,219,078	12	
<b>EXPENDITURES SUMMARY</b>																	
- Total Public Safety and Legal Services	13	12,425,170	1,896,639	23,250	0	930,429	0	0	293,923			0	15,569,411	14,063,336	13,700,876	13	
- Total Physical Health and Social Services	14	2,740,881	2,324,931	2,500	0	0	0	0	0			0	5,068,312	5,516,778	5,420,019	14	
- Total Mental Health, ID & DD	15	0	0	1,216,696	3,564,086	0	0	0	0			0	4,780,782	4,596,329	4,993,564	15	
- Total County Environment and Education	16	1,591,227	0	90,000	0	497,735	0	0	371,238			0	2,550,200	2,481,277	2,380,294	16	
- Total Roads & Transportation	17	0	0	0	0	0	0	8,255,200	0			0	8,255,200	7,839,500	6,932,727	17	
- Total Governmental Services to Residents	18	1,709,787	566,186	0	0	7,000	0	0	206,048			0	2,489,021	2,454,960	2,296,383	18	
- Total Administration	19	4,914,322	1,235,496	63,500	0	0	0	22,194	0			0	6,235,512	6,832,579	5,893,990	19	
- Total Nonprogram Current Expenditures	20	20,000	0	0	0	0	0	0	0			0	20,000	20,000	28,420	20	
- Total Long-Term Debt Service	21	0	0	0	0	0	0	0	0			1,069,776	1,069,776	1,114,677	1,030,292	21	
- Total Capital Projects	22	0	0	283,341	0	0	0	3,200,000	840,336	1,245,500		0	5,569,177	6,041,583	2,219,078	22	
<b>TOTAL - ALL EXPENDITURES (lines 13-24)</b>	23	23,401,387	6,023,252	1,679,287	3,564,086	1,435,164	0	11,477,394	1,711,545	1,245,500	1,069,776	0	51,607,391	50,961,019	44,895,643	23	
<b>OTHER BUDGETARY FINANCING USES</b>																	
<b>OPERATING TRANSFERS OUT</b>																	
- To General Supplemental	24															4,503,559	24
- To Rural Services Supplemental	25															0	25
- To Secondary Roads	26					2,328,000							2,328,000	2,328,000	2,328,000	26	
- To Other Budgetary Funds	27		5,678,120	365,025		165,880			628,665				6,837,690	6,346,970	1,254,201	27	
<b>TOTAL OPERATING TRANSFERS OUT</b>	28	0	5,678,120	365,025	0	2,493,880	0	0	628,665	0	0	0	9,165,690	8,674,970	8,085,760	28	
<b>REFUNDED DEBT/PAYMENTS TO ESCROW</b>	29															0	29
Increase (Decrease) In Reserves (GAAP Budgets)	30															0	30
Fund Balance - Nonspendable	31							1,732,423					1,732,423	1,035,000	942,263	31	
Fund Balance - Restricted	32		873,222	309,392	2,119,961	193,537		2,560,509		454,312	182,164	35,661	6,728,758	8,457,500	11,031,311	32	
Fund Balance - Committed	33												0	975,240	864,086	33	
Fund Balance - Assigned	34												0			34	
Fund Balance - Unassigned	35	4,428,257	0	66	0	0	0	0	364,489	0	0	0	4,792,812	5,160,445	4,989,773	35	
<b>TOTAL ENDING FUND BALANCE - JUNE 30,</b>	36	4,428,257	873,222	309,458	2,119,961	193,537	0	4,292,932	364,489	454,312	182,164	35,661	13,253,993	15,628,185	17,827,433	36	
<b>TOTAL REQUIREMENTS (23+28+29-30+36)</b>	37	27,829,644	12,574,594	2,353,770	5,684,047	4,122,581	0	15,770,326	2,704,699	1,699,812	1,251,940	35,661	74,027,074	75,264,174	70,808,836	37	



**LONG TERM DEBT SCHEDULE**  
**GENERAL OBLIGATION BONDS, TIF BONDS, REVENUE BONDS, LOANS, LEASE-PURCHASE PAYMENTS**  
**This area, lines 1 through 20, is for Countywide Debt Service**

FY 2015/2016

Project Name (A)	Amount of Issue (B)	Date Certified To County Auditor (format: XX/XX/XX) (C)	Principal	Interest	Bond Registration	Total Obligation	Amount Paid by Other Funds & Debt Service Fund Balance (H)	Current Year
			Due 2015/2016 (D)	Due 2015/2016 (E)	Due 2015/2016 (F)	Due 2015/2016 (G)		Utility Replacement & Debt Service Taxes (I)
			(D)	+(E)	+(F)	=(G)	-(H)	=(I)
1 Capital Loan Note - 2010	900,000	2/19/08	95,000	11,771		106,771	106,771	0
2 Capital Loan Note - 2012	479,000	8/1/11	99,000	1,812		100,812	80,000	20,812
3 Capital Loan Note - 2013	1,400,000	3/1/13	273,600	7,059		280,659		280,659
4 Capital Loan Note - 2014	845,000	8/1/13	169,000	10,140		179,140		179,140
5 Capital Loan Note - 2015	900,000	11/1/14	180,000	15,660		195,660		195,660
6 Capital Loan Note - 2015	839,000	3/1/15	167,800	13,424		181,224	25,692	155,532
7 Capital Loan Note - 2016				25,510		25,510		25,510
8						0		0
9						0		0
10						0		0
11						0		0
12						0		0
13						0		0
14						0		0
15						0		0
16						0		0
17						0		0
18						0		0
19						0		0
20						0		0
<b>TOTALS FOR COUNTYWIDE DEBT SERVICE:</b>			984,400	85,376	0	1,069,776	212,463	857,313
<b>This area, lines 21 through 25, is for Partial County Debt Service Only -- Such as for Special Assessment District Debt Service</b>								
21						0		0
22						0		0
23						0		0
24						0		0
25						0		0
<b>TOTALS FOR PARTIAL COUNTY DEBT SERVICE:</b>			0	0	0	0	0	0





# Woodbury County Board of Supervisors

Courthouse • Room 104  
620 Douglas Street • Sioux City, Iowa 51101  
Telephone (712) 279-6525 • Fax (712) 279-6577

## MEMBERS

LARRY D. CLAUSEN  
SIOUX CITY

MARK A. MONSON  
SERGEANT BLUFF

JACLYN D. SMITH  
SIOUX CITY

MATTHEW A. UNG  
SIOUX CITY

JEREMY J. TAYLOR  
SIOUX CITY

BOARD ADMINISTRATIVE COORDINATOR  
KAREN JAMES

EXECUTIVE SECRETARY / PUBLIC BIDDER  
HEATHER SATTERWHITE



To: Woodbury County Board of Supervisors  
From: Dennis D. Butler, Finance/Operations Controller  
RE: FY 2016 Tax Rates & Tax Askings  
Date: February 20, 2015

### New Proposed Tax Rates for FY 2016

<u>Fund</u>	<u>FY 2015</u>	<u>FY 2016</u>	<u>Increase or Decrease by Dollars</u>	<u>Increase or Decrease by %</u>
General Basic	3.50000	3.50000	0.00000	
General Supplemental	3.12584	2.82458	(0.30126)	
Mental Health Services	0.90867	0.97917	0.07050	
Debt Service	0.22902	0.21239	(0.01663)	
Countywide for Cities & Townships	7.76353	7.51614	(0.24739)	-3.19%
Rural Basic - Townships Only	3.65218	3.51574	(0.13644)	
Total for Townships	11.41571	11.03188	(0.38383)	-3.36%

**Tax Askings by Fund**

<b><u>Fund</u></b>	<b><u>FY 2015</u></b>	<b><u>FY 2016</u></b>	<b><u>Increase or Decrease by Dollars</u></b>	
General Basic	12,536,380	12,739,617	203,237	
General Supplemental	11,196,204	10,281,164	(915,040)	
Mental Health Services	3,254,694	3,564,086	309,392	
Debt Service	910,763	857,313	(53,450)	
Countywide for Cities & Townships	27,898,041	27,442,180	(455,861)	
Rural Basic - Townships Only	3,651,079	3,691,766	40,687	
<b>Grand Total</b>	<b>31,549,120</b>	<b>31,133,946</b>	<b>(415,174)</b>	<b>-1.32%</b>

**Effects on Different Land Classes**

		<b><u>FY 2015</u></b>	<b><u>FY 2016</u></b>	<b><u>Increase</u></b>	<b><u>Increase</u></b>
<b><u>Cities:</u></b>					
	Residential	\$776.54	\$770.04	(\$6.50)	-0.84%
	Commercial	\$817.21	\$712.06	(\$105.15)	-12.87%
<b><u>Townships:</u></b>					
	Residential	\$1,141.57	\$1,130.23	(\$11.34)	-0.99%
	Commercial	\$1,201.65	\$1,045.13	(\$156.52)	-13.03%
	Ag Lands	\$1,141.57	\$1,136.28	(\$5.29)	-0.46%

**State Ordered Rollbacks**

	<b><u>FY 2015</u></b>	<b><u>FY 2016</u></b>	<b><u>Increase</u></b>
Residential	54.4002	55.7335	1.3333
Ag Land	43.3997	44.7021	1.3024
Commercial	95.0000	90.0000	(5.0000)

#86

February 24, 2015

*Via Facsimile*

Mark Monson, Chairman  
Woodbury County Board of Supervisors  
Woodbury County Courthouse  
620 Douglas Street, Room 101  
Sioux City, IA 51101

Re: *FY 2015 Woodbury County Compensation Board Meeting*

Dear Mr. Monson:

The Woodbury County Compensation Board met on February 23, 2015 at 5:00 p.m. In attendance were: Frank Baron, Tim Bottaro, Brian Buckmeier, Katie Colling, Doug Phillips, and Al Sturgeon. Motion to elect Brian Buckmeier Chair and Katie Colling Secretary (Sturgeon, 2<sup>nd</sup> by Baron). Motion approved, 5-1. Chair called for a brief discussion of elected official salary proposals for FY 2016.

Motion for a 5% increase for the following elected officials: Sheriff; Treasurer; County Attorney and Auditor and 0% for Woodbury County Supervisors (Sturgeon, 2<sup>nd</sup> by Phillips). Motion accepted 4 to 2.

Meeting adjourned at 5:15 p.m.

Thank you for this opportunity to serve the citizens of Woodbury County.

Sincerely,

*Brian Buckmeier, by KLC*

Brian Buckmeier, Chairperson  
Woodbury County Compensation Board

cc: Compensation Board



**331.907 Compensation schedule — preparation and adoption.**

1. The annual compensation of the auditor, treasurer, recorder, sheriff, county attorney, and supervisors shall be determined as provided in **this section**. The county compensation board annually shall review the compensation paid to comparable officers in other counties of this state, other states, private enterprise, and the federal government. In setting the salary of the county sheriff, the county compensation board shall consider setting the sheriff's salary so that it is comparable to salaries paid to professional law enforcement administrators and command officers of the state patrol, the division of criminal investigation of the department of public safety, and city police agencies in this state. The county compensation board shall prepare a compensation schedule for the elective county officers for the succeeding fiscal year. A recommended compensation schedule requires a majority vote of the membership of the county compensation board.

2. At the public hearing held on the county budget as provided in **section 331.434**, the county compensation board shall submit its recommended compensation schedule for the next fiscal year to the board of supervisors for inclusion in the county budget. **The board of supervisors shall review the recommended compensation schedule for the elected county officers and determine the final compensation schedule which shall not exceed the compensation schedule recommended by the county compensation board. In determining the final compensation schedule if the board of supervisors wishes to reduce the amount of the recommended compensation schedule, the amount of salary increase proposed for each elected county officer, except as provided in subsection 3, shall be reduced an equal percentage.** A copy of the final compensation schedule shall be filed with the county budget at the office of the director of the department of management. The final compensation schedule takes effect on July 1 following its adoption by the board of supervisors.

**WOODBURY COUNTY BOARD OF SUPERVISORS AGENDA ITEM(S) REQUEST FORM**

Date: March 4, 2015

Weekly Agenda Date: March 10, 2015

DEPARTMENT HEAD / CITIZEN: Kevin Grieme, Siouxland District Health Department

SUBJECT: Appointment of Siouxland District Board of Health member

**ACTION REQUIRED:**

Approve Ordinance

Approve Resolution

Approve Motion

Give Direction

Other: Informational

Attachments

**WORDING FOR AGENDA ITEM:** Approval of Appointment to Siouxland District Board of Health

**EXECUTIVE SUMMARY:** The Woodbury County Board of Supervisors have been designated as the appointing authority for the Siouxland District Board of Health as outlined in Iowa Code, Chapter 137.105. The Siouxland District Board of Health consists of seven members. This appointment will fill all vacancies on the board. The appointments are for three year terms and are on a rotating basis.

**BACKGROUND:** Vacancies on the Siouxland District Board of Health are posted through a notification process and applications are requested. The applications are reviewed by the Siouxland District Health Department Director with a recommendation brought to the Board of Supervisors. Board members experience is taken into consideration, seeking to have representatives from business, finance, healthcare, education, community and underserved audiences represented. The Board of Health is also required by Iowa Code to have one licensed physician as a member. Siouxland District Board of Health is also interested in maintaining a gender balance and is also seeking to identify members to represent the rural areas of Woodbury County.

**FINANCIAL IMPACT:** There is no financial impact with this appointment.

**RECOMMENDATION:** To appoint Adam Lloyd, Merville to serve a three year term through December 31, 2017 on the Siouxland District Board of Health.

**ACTION REQUIRED:** Formal vote of approval for the recommendation as stated above.

*Approved by Board of Supervisors March 3, 2015.*





### APPLICATION FORM FOR WOODBURY COUNTY BOARD/COMMISSION

Please Return To:

Woodbury County Board of Supervisors, Room 104, Woodbury County Courthouse,  
620 Douglas St., Sioux City, Iowa 51101

Phone: (712) 279-6525 Fax: (712) 279-279-6577 Website: <http://woodburyiowa.com>

Application For: SIouxLAND DISTRICT HEALTH (Board/Commission)

Date 2-12-15 E-mail Address adam.lloyd@wellsfargo.com

Name ADAM LLOYD

Address 605 N 4th ST MOVILLE, IA 51039

Phone Number \_\_\_\_\_ Fax Number \_\_\_\_\_

Business Phone 712-277-7120 Cell Phone 712-251-2990

This form assists the Board of Supervisors in evaluating the qualifications of applicants for appointment to a board or commission. State law requires political subdivisions to make a good faith effort to balance most appointive boards, commissions, committees, and councils according to gender by January 1, 2012, and each year thereafter.

Female  Male

Place of employment and position (and/or activities such as hobbies, volunteer work, etc. that you feel may qualify you for this position):

SEE ATTACHMENT - A

The following questions will assist the Board of Supervisors in its selection.

■ How much time will you be willing to devote in this position?

AS NECESSARY

■ Interest in Appointment: Describe in detail why you are interested in serving on a county board or commission. Include information about your background that supports your interest.

SEE ATTACHMENT - B

■ Contributions you feel you can make to the Board/Commission:

SEE ATTACHMENT - C



■ Direction/role you perceive of this Board/Commission:

SEE ATTACHMENT - D

■ In lieu of/in addition to the above, do you have any comments to add that may assist the Board of Supervisors in its selection?

SEE ATTACHMENT - E

■ Please provide two references who may be contacted on your qualifications for this position.

Name	Address	Phone number	Email address	Relationship
SEE ATTACHMENT - F				

I certify that there is nothing that would prohibit me from serving on this board or commission.

Signature Alan P. J. J. Date 2-12-15

**YOUR APPLICATION WILL BE RETAINED IN OUR FILES FOR ONE YEAR  
THIS APPLICATION IS A PUBLIC DOCUMENT AND AS SUCH CAN BE REPRODUCED AND  
DISTRIBUTED FOR THE PUBLIC.**

## Siouxland District Health Board Vacancy Application

- A. Wells Fargo – Business Relationship Manager / AVP
- Commercial Banker with a special emphasis in the Healthcare Industry
- Siouxland American Heart Association
- > 2 year board member
  - Sponsor Family for Plymouth/Sioux County Heart Walk (2013)
  - Sponsor Family for the Woodbury County Heart Walk (2014)
  - Daughter was a Princess for the Siouxland Heart Ball (Feb. 2014)
- March of Dimes
- Sponsor Family for the 2013 Signature Chef's Auction
- B. My primary interest in serving on the board is the personal passion I have for the health and safety of our community members. Having a child with a congenital health condition, it is imperative for my wife and I to keep our family healthy and stay abreast of the issues surrounding our community.
- Since 2012, I have read articles and attempted to stay current with the events and the concerns of our community, primarily for the health of our youngest daughter. It is my interest in taking this passion and drive to help my fellow county residents as well.
- C. I can contribute my personal experience and my financial experiences to the board. As a community banker, I can bring my finance and analytical background to use for the benefit of the board and our community.
- D. I want to continue the work of the current and past board members, by overseeing and bringing a new mind, hard work ethic and accountability to any task.
- E. With personal and professional background in health and finance, I believe that I would be a great advocate to our Siouxland District Health Board and our Woodbury County residents. I also Thank You for your consideration and review of my application.
- F. References:
- |                        |  |
|------------------------|--|
| 1. Dr. Eyad K Najdawi  | 2. Bob Scott   |
| 1125 Pierce St.        | 916 Grandview Blvd                                       |
| Sioux City, IA 51105   | Sioux City, IA 51101                                     |
| 712.255.8901           | 712.251.2216   |
| Unknown                | <a href="mailto:bob@rescottco.com">bob@rescottco.com</a> |
| Daughters Cardiologist | Personal Relationship                                    |

APPLICATION FORM FOR WOODBURY COUNTY  
BOARD/COMMISSION

Please Return To:

Woodbury County Board of Supervisors, Room 104, Woodbury County Courthouse,  
620 Douglas St., Sioux City, Iowa 51101

Phone: (712) 279-6525 Fax: (712) 279-279-6577 Website: <http://woodburyiowa.com>

FEB 26 2015 PM 1:19

Application For: District Board of Health (Board/Commission)

Date 2-25-15 E-mail Address mnitz@slandhc.com

Name Michael Nitz

Address 3620 Pawnee Place Sioux City, IA 51104

Phone Number 712-226-4887 Fax Number \_\_\_\_\_

Business Phone 712-202-1191 Cell Phone \_\_\_\_\_

This form assists the Board of Supervisors in evaluating the qualifications of applicants for appointment to a board or commission. State law requires political subdivisions to make a good faith effort to balance most appointive boards, commissions, committees, and councils according to gender by January 1, 2012, and each year thereafter.

Female  Male

Place of employment and position (and/or activities such as hobbies, volunteer work, etc. that you feel may qualify you for this position):

Siouxland Community Health Center - Controller  
I have also served as a federal grant reviewer for  
the Dept of Health and Human Services during the past  
8 years.  
I am currently in the Leadership Siouxland Class of 2015,

The following questions will assist the Board of Supervisors in its selection.

■ How much time will you be willing to devote in this position?

10-20 hrs/month as needed

■ Interest in Appointment: Describe in detail why you are interested in serving on a county board or commission. Include information about your background that supports your interest.

I enjoy working collaboratively with groups to address and solve  
community health issues. I am also interested due to the Health Dept's  
number of grants and my background with the State Dept of Public  
Health grants and budgeting. I have worked at SCHR for  
13 years and have a Master's Degree in Healthcare Admin.

■ Contributions you feel you can make to the Board/Commission:

I would bring a community non-profit medical perspective  
to the Board. This includes discussing emerging primary care  
issues/needs as well as sharing experience from completing  
State grants and budgets.



■ Direction/role you perceive of this Board/Commission:

The Board should advocate and promote health and wellness partnerships within the County. The Board should also assess community health needs and emerging trends to recommend future programs to the Health Director for implementation.

■ In lieu of/in addition to the above, do you have any comments to add that may assist the Board of Supervisors in its selection?

\_\_\_\_\_  
\_\_\_\_\_  
\_\_\_\_\_  
\_\_\_\_\_

■ Please provide two references who may be contacted on your qualifications for this position.

Name            Address            Phone number            Email address            Relationship

Jan Anderson    714 Deerfield Drive    Sioux City, IA 51108  
712-202-1002    janderson@slmdchc.com    Supervisor

Brett Padgett    2212 Terrace Place    Sioux City, IA 51104  
712-251-8611    Friend

I certify that there is nothing that would prohibit me from serving on this board or commission.

Signature Michael W. [Signature]            Date 2-25-15

**YOUR APPLICATION WILL BE RETAINED IN OUR FILES FOR ONE YEAR  
THIS APPLICATION IS A PUBLIC DOCUMENT AND AS SUCH CAN BE REPRODUCED AND  
DISTRIBUTED FOR THE PUBLIC.**

**WOODBURY COUNTY, IOWA  
BOARD ADMINISTRATION**

**MEMORANDUM**



**TO:** Board of Supervisors  
**FROM:** Karen James, Board Administrative Coordinator  
**RE:** Consideration of Appointments  
**DATE:** March 1, 2015

Ads for openings on the Siouxland District Board of Health, Woodbury County Commission to Assess Damages and Judicial Magistrate Nomination Commission were published in the Sioux City Journal on February 8 and February 11, 2015. Applications were accepted until 4:30 p.m., February 27, 2015.

We received two applications for Siouxland District Board of Health and two for the Judicial Magistrate Nomination Commission. We did not receive anything for the Commission to Assess Damages.

Attached are the copies of the applications.

**Karen James - ref: Board & Commission Application Paperwork**

---

**From:** Judy Darwin <darwinjudy686@yahoo.com>  
**To:** KJAMES@sioux-city.org; darwinjudy686@yahoo.com  
**Date:** 1/21/2015 5:22 PM  
**Subject:** ref: Board & Commission Application Paperwork  
**Attachments:** IMG.jpg; IMG\_0001.jpg

---

Karen,

Here is my application for board and Commission, if they have all boards and commission filled, just keep my application on file for openings. Sorry I kinda didn't have enough room to write everything that I have been active in...

thank you for your help Karen, greatly appreciated.

Judy Darwin  
[712-560-9760](tel:712-560-9760)



**APPLICATION FORM FOR WOODBURY COUNTY  
BOARD/COMMISSION**

Please Return To:

Woodbury County Board of Supervisors, Room 104, Woodbury County Courthouse,  
620 Douglas St., Sioux City, Iowa 51101

Phone: (712) 279-6525 Fax: (712) 279-279-6577 Website: <http://woodburyiowa.com>

Application For: Juvenile Prevention Commission, or judicial  
(Board/Commission)

Date 01/21/2015 E-mail Address dawsonjudy186@yahoo.com

Name Judy Dawson

Address 55 West Platten Avenue Apt. 100, Sioux City, IA 51104

Phone Number 712-560-9260 Fax Number n/a

Business Phone n/a Cell Phone n/a

This form assists the Board of Supervisors in evaluating the qualifications of applicants for appointment to a board or commission. State law requires political subdivisions to make a good faith effort to balance most appointive boards, commissions, committees, and councils according to gender by January 1, 2012, and each year thereafter.

Female  Male

Place of employment and position (and/or activities such as hobbies, volunteer work, etc. that you feel may qualify you for this position): 30 years

Retired - Property Manager - Disabled

Past President - Neighborhood Network

Past Siouxland Cases Board Member

Past President PTA Council - Siouxland Committee for the Handicapped

Past Juvenile Intervention/Gang - Drugs

The following questions will assist the Board of Supervisors in its selection. Past: Iowa Missions

■ How much time will you be willing to devote in this position? As much as needed. Past: \*Exploited  
Past: Victim - Test force

■ Interest in Appointment: Describe in detail why you are interested in serving on a county board or commission. Include information about your background that supports your interest.

Working over 23 years with families

in Neighborhoods, finding runaways

and wanted juveniles, assisting Les Miller

with Gang intelligence.

30 years of Community Activities with Healthcare

■ Contributions you feel you can make to the Board/Commission: educator - Disabled

Just all of my expertise and my background

working in education, healthcare, juveniles,

senior citizens, Crime Prevention, Intervention

dealing with social needs and quality of

life issues in City and County areas. Helping

with mental Health funding, advocating at

Federal and State levels.

## Applicant's Statement

I understand that the employer follows an employment-at-will policy, in that I or the employer may terminate my employment at any time or for any reason consistent with applicable state or federal law. I understand that this application is not a contract of employment. I understand that to be employed I must be lawfully authorized to work in the United States and that I must show the employer documents that will prove this, if I am offered employment.

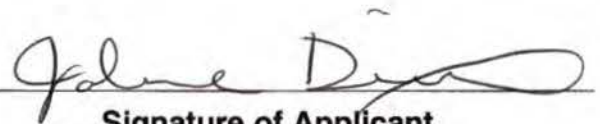
I certify that answers given herein are true and complete to the best of my knowledge. I authorize investigation of all statements made in this application for employment as may be necessary in arriving at an employment decision. In the event of employment, I understand that false or misleading statements given in my application or interview(s) shall be considered sufficient cause for dismissal. I further understand that an incomplete application or an absence of my signature on this application is just cause for rejection of this application. I agree to employment entrance exams, if necessary, at County cost.

I understand this application is only for the position I listed on the front of the application. If I would like to apply for another position, I must submit another employment application with any required written information.

If selected for employment, I understand that a pre-employment drug screen test, pre-employment physical and background check are required for employment and that I must pass these pre-employment tests to be employed by Woodbury County.

2/25/15

Date



Signature of Applicant

**Woodbury County seeks to employ individuals who have demonstrated in their job and life experiences a meaningful understanding and respect for Professionalism, Responsiveness, Involvement, Dedication, and Excellence. We have combined these qualities to reflect our definition and commitment to the service we provide our citizens as PRIDE.**

*Individuals in need of special accommodation are asked to notify our office in advance.*



**Jolene K. Dixon**  
435 Terrtam Street  
Merville, IA 51039  
712-389-1673  
[jlnctr@yahoo.com](mailto:jlnctr@yahoo.com)

## **PROFILE**

---

Master's degree in Justice Administration and Crime Management with experience as a paralegal for a municipality, searching for employment in public service.

## **SUMMARY OF QUALIFICATIONS**

---

- Highly motivated professional able to work with little direction or supervision
- Capacity to interact well with colleagues and the general public in a fast-paced, demanding environment
- Very thorough and well organized with excellent problem-solving skills
- Highly effective written and oral communication skills
- Exceptional interpersonal skills

## **RELEVANT PROFESSIONAL EXPERIENCE**

---

- Prepared for and taught classes in the Paralegal Studies program for WITCC
- Prepared for and facilitated Foster Care Youth Council Meetings while promoting the Iowa Foster Care Youth Council agenda through communication with the Department of Human Services, foster parents and community leaders
- Successfully managed all facets of collection activity for the City of Des Moines including setting goals to meet organizational objectives
- Served as a liaison between the County Attorney's office and the City of Des Moines for all property damage cases
- Worked with a variety of people to solve problems and disputes regarding legal collection issues with CIC Plan, Inc. and the City of Des Moines

## **RELEVANT EMPLOYMENT HISTORY**

---

<b>Adjunct Instructor</b> Western Iowa Tech Community College, Sioux City, Iowa	<b>2013-2014</b>
<b>Iowa Foster Care Youth Council Facilitator</b> Children's Square, Council Bluffs, Iowa	<b>2012-2013</b>
<b>Legal Assistant</b> City of Des Moines Legal Department, Des Moines, Iowa	<b>1996-2004</b>
<b>Legal Assistant</b> CIC Plan, Inc., Des Moines, Iowa	<b>1995-1996</b>

## **EDUCATION**

---

<b>Master of Science, Justice Administration and Crime Management</b> Bellevue University, Bellevue, Nebraska	<b>2011</b>
<b>Bachelor of Science, Criminal Justice</b> Bellevue University, Bellevue, Nebraska	<b>2008</b>
<b>Associate of Science, Legal Assistant</b> Des Moines Area Community College, Des Moines, Iowa	<b>1991</b>



**RESOLUTION #**  
**NOTICE OF PROPERTY SALE**

**#11c**

**Parcel #026565**

**WHEREAS** Woodbury County, Iowa was the owner under a tax deed of a certain parcel of real estate described as:

**Lot Twelve and all of Lot Eleven, except the South Ten Feet thereof, all in Block Sixty-three, Sioux City East Addition, Woodbury County, Iowa (1117 Douglas Street)**

**NOW THEREFORE,**

**BE IT RESOLVED** by the Board of Supervisors of Woodbury County, Iowa as follows:

1. That a public hearing on the aforesaid proposal shall be held on the **24<sup>th</sup> Day of March, 2015 at 4:40 o'clock p.m.** in the meeting room of the Board of Supervisors on the first floor of the Woodbury County Courthouse.
2. That said Board proposes to sell the said parcel of real estate at a public auction to be held on the **24<sup>th</sup> Day of March, 2015**, immediately following the closing of the public hearing.
3. That said Board proposes to sell the said real estate to the highest bidder at or above a **total minimum bid of \$406.00** plus recording fees.
4. That this resolution, preceded by the caption "Notice of Property Sale" and except for this subparagraph 4 be published as notice of the aforesaid proposal, hearing and sale.

Dated this 10<sup>th</sup> Day of March, 2015.

ATTEST:

WOODBURY COUNTY BOARD OF SUPERVISORS

\_\_\_\_\_  
Patrick F. Gill  
Woodbury County Auditor  
and Recorder

\_\_\_\_\_  
Mark A. Monson, Chairman

REQUEST FOR MINIMUM BID

Name: Robert Corey Date: 3/18/14

Address: 1115 Douglas St. Phone: 712-253-6539

Address or approximate address/location of property interested in:

1117 Douglas St.

GIS# 894728111007

*\*This portion to be completed by Board Administration \**

Legal Description:

Lot twelve and all of lot eleven except  
the S 10' thereof, all in Block 103, Sioux City  
East Addition, Woodbury County, Iowa

Tax Sale #/Date: 6/17/13 # 1112 Parcel # 026565

Tax Deeded to Woodbury County on: 1/15/15

Current Assessed Value: Land \$24,000- Building 0 Total \$24,000-

Approximate Delinquent Real Estate Taxes: \$10,877-

Approximate Delinquent Special Assessment Taxes: \$57,563-

\*Cost of Services: \$106-

Inspection to: George Boyken Date: \_\_\_\_\_

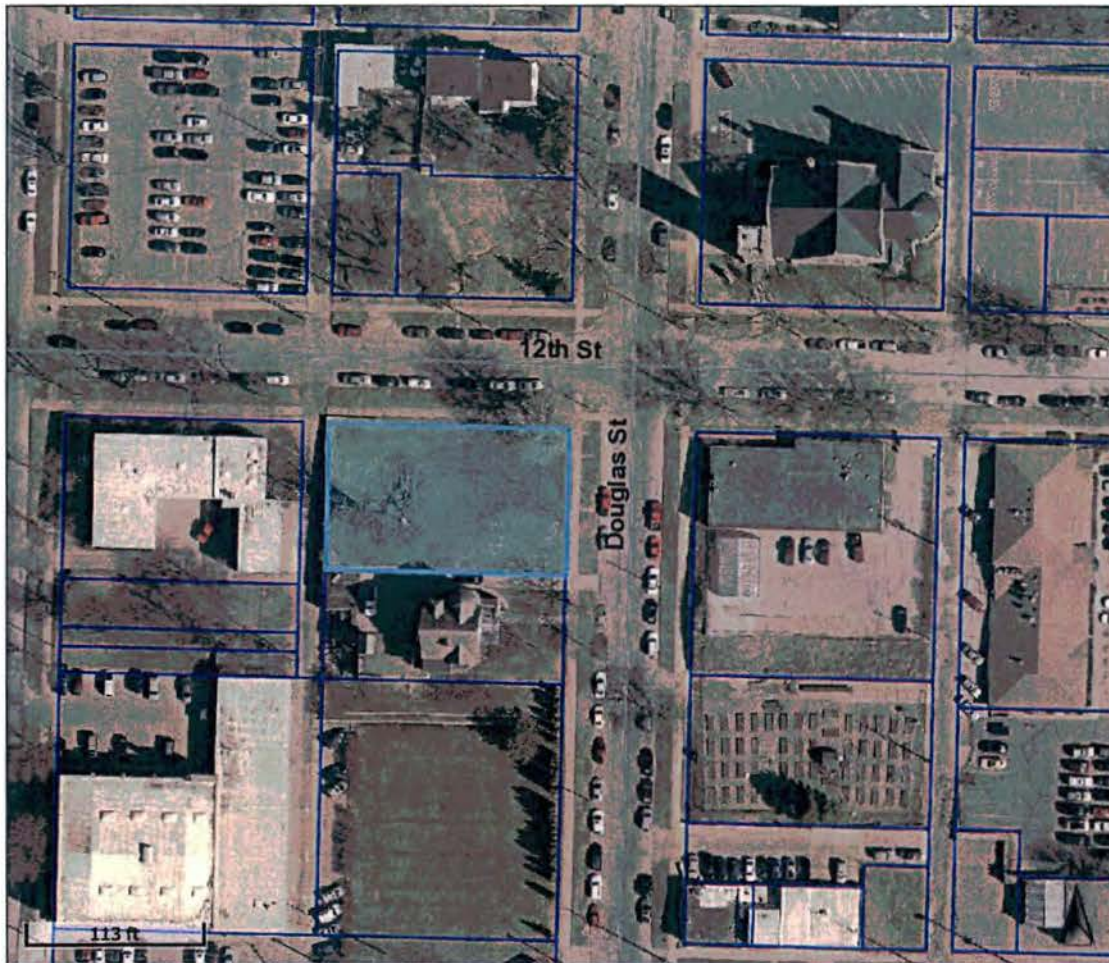
Minimum Bid Set by Supervisor: \$300 total: \$406-

Date and Time Set for Auction: March 24<sup>th</sup> @ 4:40 P.M.  
~~March 24<sup>th</sup> @ 4:40 P.M.~~

\* Includes: Abstractors costs; Sheriff's costs; publishing costs; and mailing costs.



Date Created: 1/21/2015



Overview



Legend

- Roads
- Corp Boundaries
- Townships
- Sections
- Residential Sales**
- 2012
- 2013
- 2014
- Parcels

<b>Parcel ID</b>	894728111007	<b>Alternate ID</b>	026580	<b>Owner Address</b>	WOODBURY COUNTY WOODBURY COUNTY COURTHOUSE 620 DOUGLAS ST SIOUX CITY, IA 51101-0000
<b>Sec/Twp/Rng</b>	0-0-0	<b>Class</b>	C		
<b>Property Address</b>	1117 DOUGLAS ST SIOUX CITY	<b>Acreage</b>	n/a		
<b>District</b>	087 SC LL SIOUX CITY COMM				
<b>Brief Tax Description</b>	SIOUX CITY EAST N 40 FT LOT 11 BLK 6 3 LOT 12 BLK 6 <i>(Note: Not to be used on legal documents)</i>				

Last Data Upload: 1/21/2015 1:47:30 AM

Date Created: 1/21/2015



<b>Parcel ID</b>	894728111007	<b>Alternate ID</b>	026580	<b>Owner Address</b>	WOODBURY COUNTY WOODBURY COUNTY COURTHOUSE 620 DOUGLAS ST SIOUX CITY, IA 51101-0000
<b>Sec/Twp/Rng</b>	0-0-0	<b>Class</b>	C		
<b>Property Address</b>	1117 DOUGLAS ST SIOUX CITY	<b>Acreage</b>	n/a		
<b>District</b>	087 SC LL SIOUX CITY COMM				
<b>Brief Tax Description</b>	SIOUX CITY EAST N 40 FT LOT 11 BLK 6 3 LOT 12 BLK 63 <i>(Note: Not to be used on legal documents)</i>				

Last Data Upload: 1/21/2015 1:47:30 AM



#14

Date: March 05, 2015  
TO: Board of Supervisors  
FROM: Mark Nahra, County Engineer  
RE: Tuesday, March 10, 2014 Meeting

I am requesting the following agenda items for the Board's consideration.

- Consider approval to work in the Right of Way (R.O.W.) for MidAmerican Energy for the relocation of a 161 kV transmission line along the east side of K45 (Old Hwy 75). Relocation of the transmission line extends from 240<sup>th</sup> Street south to 260<sup>th</sup> Street. The transmission line will be utilizing a private utility easement to the east of the Woodbury County R.O.W. line. Work in the R.O.W. required to remove existing transmission line.



# Woodbury County Secondary Roads Department

759 E. Frontage Road • Merville, Iowa 51039  
Telephone (712) 279-6484 • (712) 873-3215 • Fax (712) 873-3235

COUNTY ENGINEER  
Mark J. Nahra, P.E.  
mnahra@sioux-city.org

ASSISTANT TO THE COUNTY ENGINEER  
Benjamin T. Kusler, E.I.T.  
bkusler@sioux-city.org

SECRETARY  
Tish Brice  
tbrice@sioux-city.org

## WOODBURY COUNTY SECONDARY ROAD DEPARTMENT PERMIT & AGREEMENT TO PERFORM WORK WITHIN WOODBURY COUNTY RIGHT OF WAY

Name of Permittee: Mid American Energy Company Phone No.: 1-663-333-8128

Mailing Address: ATTS Carolanne Waiters Eng. II 106 East 2<sup>nd</sup> St. Davenport IA 52801

Township: Liberty Section: 16, 21 & 22

Woodbury County, State of Iowa, and Mid American Energy Company (hereinafter referred to as property owner, organization or authorized representative) do hereby enter into the following permit and agreement:

1. Woodbury County hereby consents to and grants permission to the property owner, organization or authorized representative, to conduct the following described construction or activities within the right-of-way:

Removal of existing Power Poles which are located in woodbury County R.O.W. Mid American  
is placing a new 161 KV line on a private easement outside of the R.O.W.  
Construction requires equipment to use Woodbury County R.O.W. To do the work.

2. In consideration of Woodbury County granting said permission and consent, the property owner, organization or authorized representative hereby promises and agrees to the following:

A. The applicant shall carry on the construction, repair and maintenance with serious regard to the safety of the traveling public and adjacent property owners.

B. The property owner, organization or authorized representative, at his/her own expense, shall provide all safety measures and warning devices necessary to protect the traveling public such as but not limited to, signs, lights, and barricades during the day and at night if the roadway will be obstructed. Traffic protection shall be in accordance with Part VI of the current Manual on Uniform Traffic Control Devices for Streets and Highways. The Department will loan the required signs to the applicant who shall be responsible for placing the signs and covering or removing when not in use, removal after the work has been completed, and return of the Department owned signs to the Department maintenance facility from which obtained. The applicant shall be responsible for correctly using signs as needed while work is in progress. Flagging operations are the responsibility of the applicant.

C. In placing any drainage structure, no natural drainage course will be altered or blocked.

D. The finished project shall be left in a satisfactory condition subject to the approval of the County Engineer. The traveled portion of the roadway shall not be damaged or disturbed. The property owner, organization or authorized representative assumes all liability and agrees to reimburse Woodbury County for any damage to the roadway or ditch caused by placement of this structure. Permittee is to call County Engineer for upon completion for final inspection.

E. The property owner, organization or authorized representative shall notify all appropriate telephone and utility companies in advance of any excavation and shall check for underground electric or telephone lines.



F. Woodbury County will not assume any of the cost of the construction of the said improvement or structure nor will Woodbury County assume any future costs for maintenance or replacement of said improvement or structure. If in the best interest of Woodbury County, the said improvement or structure may be removed by the County, or may be caused to be removed, without any obligation by Woodbury County to pay damages or cost of replacement.

G. Property owner, organization or authorized representative will reseed and mulch the disturbed areas. Property owner, organization or authorized representative will be responsible for seed, mulch, and labor unless otherwise provided in section L.

H. The property owner, organization, or authorized representative hereby agrees to hold Woodbury County and the Woodbury County Secondary Road Department, its employees and agents harmless against any and all claims for damages and personal injury arising out of work performed or actions taken by the applicant related to the construction or maintenance of the facility. The applicant further agrees to reimburse the County or the Department for any expenditures that the County or Department may have to make on said highway rights of way on account of said applicant's construction or maintenance activity or other activities or lack thereof. The applicant shall also save Woodbury County and the Woodbury County Secondary Road Department harmless of any damage or losses that may be sustained by the traveling public on account of such construction, repair or maintenance operations, or other activities.

I. **FAILURE TO CONFORM TO OR TO ACQUIRE A PERMIT IS A VIOLATION OF SECTION 318.8, 2009 CODE OF IOWA.** This permit is subject to any laws now in effect or any laws that may be hereafter enacted and all applicable rules and regulations of local, state and federal agencies. This permit is subject to all the rules and regulations of Woodbury County and the Woodbury County Secondary Road Department.

J. This permit is subject to revocation by the Department at any time and at no cost to the Department, when in the judgment of the Department it is necessary in the improvement or maintenance of the highway or for other reasonable cause.

K. All proposed work covered by this permit shall be at the applicant's expense. The applicant shall reimburse the Woodbury County Secondary Road Department for any materials removed from the highway right of way described as follows:

Mid American shall repair any drives or entrances damaged during  
equipment movements

L. Woodbury County agrees to provide the following contribution toward completion of this project:

N/A

M. All work done by property owner, organization or authorized representative pursuant to this agreement shall be completed prior to the 1st day of December, 2015

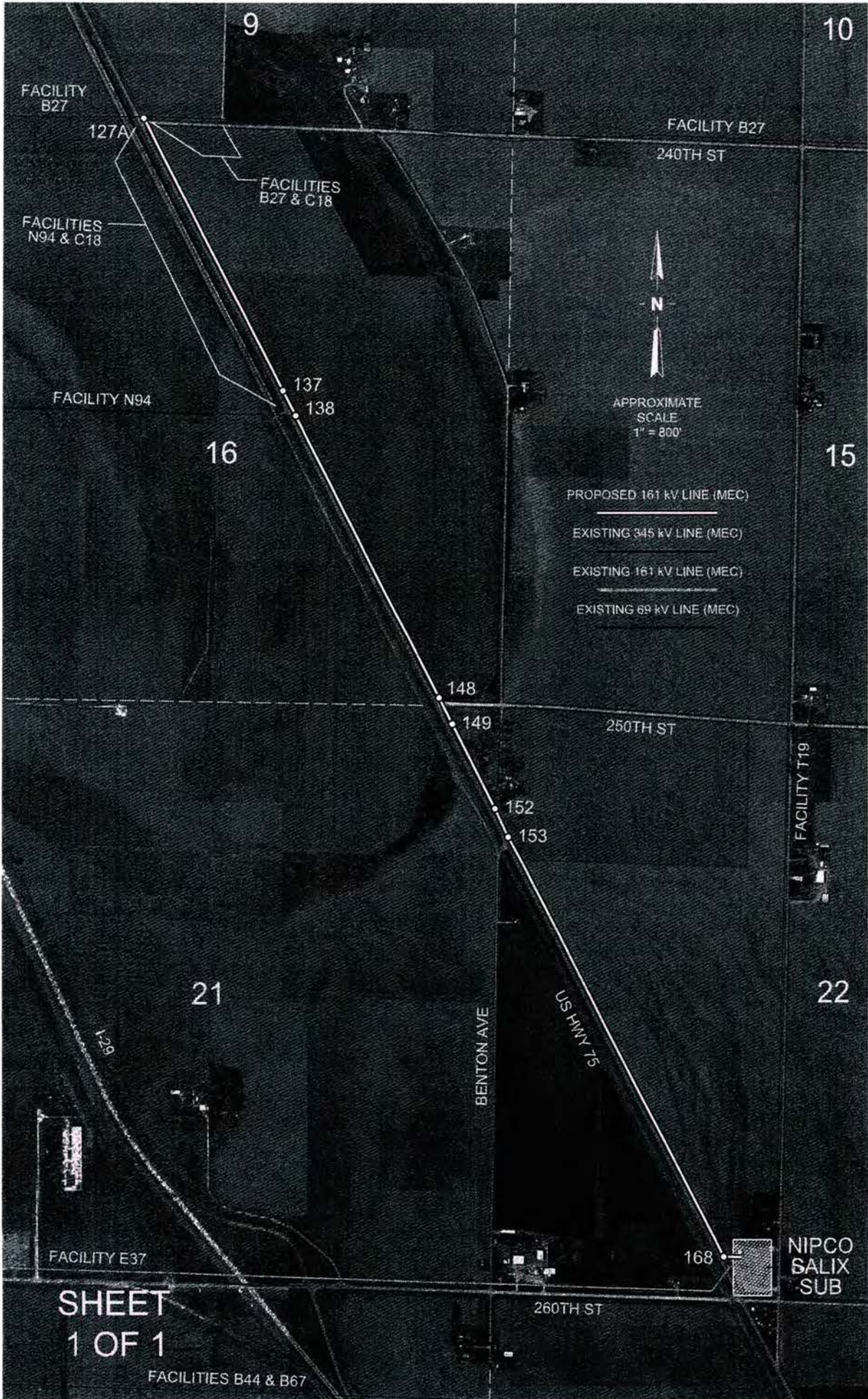
Entered into this 3rd day of March, 2015

Caroline E. Walter  
Signature of Property Owner or Authorized Representative

\_\_\_\_\_  
Woodbury County Engineer

\_\_\_\_\_  
Chair, Woodbury County Board of Supervisors





FACILITY B27

FACILITY B27

FACILITIES N94 & C18

FACILITIES B27 & C18

FACILITY N94

APPROXIMATE SCALE  
1" = 800'

- PROPOSED 161 kV LINE (MEC)
- EXISTING 345 kV LINE (MEC)
- EXISTING 161 kV LINE (MEC)
- EXISTING 69 kV LINE (MEC)

FACILITY E37

NIPCO SALIX SUB

SHEET  
1 OF 1

FACILITIES B44 & B67

9

10

16

15

21

22

1-29

BENTON AVE

US HWY 75

FACILITY T19

127A

137

138

148

149

152

153

168

240TH ST

250TH ST

260TH ST



**WOODBURY COUNTY, IOWA  
BOARD ADMINISTRATION  
MEMORANDUM**

TO: Board of Supervisors  
FROM: Karen James, Administrative Coordinator  
DATE: March 2, 2015  
RE: Farm Receipt

Attached to this memo is a copy of the check received from Tony and Kim Kohn for:

Land Contract	\$46,296.25
---------------	-------------

Thank you.



**Woodbury County Conservation Board**  
4500 Sioux River Road Sioux City, IA 51109-1657

Phone: 712/258-0838  
Fax: 712/258-1261

Board Members:  
Cindy Bennett  
Suzan Boden  
Don Dixon  
Mark Taylor, D.O.  
Christine Zellmer-Zant

Rick D. Schneider, Director  
Mark Peterson, Deputy Director  
Dawn Snyder, Education Director

Thursday, March 12, 2015

**MONTHLY MEETING AGENDA – 5:00 P.M.**  
Dorothy Pecaut Nature Center  
4500 Sioux River Road, Sioux City, IA 51109

- **Call to order / roll call** – quorum / open meeting compliance
- **Public comment / input** – this is an opportunity for the public to address any subject pertaining to Conservation Board business.

**CONSENT AGENDA**

- C1. Approve minutes of the February 3, 2015 monthly meeting.
- C2. Approve February 2015 claims and expenditures.
- C3. Receive and place on file the February 2015 financial / budget report.
- C4. Acceptance of Grant:
  - 1. Union Pacific Railroad Foundation - \$10,000 grant for nature center projects/operations
- C5. Acceptance of Gifts/Donations:
  - 1. 1<sup>st</sup> Financial Bank USA – Monetary donation (\$100)
  - 2. River City Anglers Fishing Club – Monetary donation (\$300) for Summer Intern
  - 3. Chloe McClure – Monetary donation (\$25) for box turtle care
  - 4. The Prairie Flower – 105 butterfly milkweed seed packets
  - 5. Rod Tondreau – Wildflower print

**REGULAR AGENDA**

- R1. Approve consent agenda. (Conservation Board)
- R2. Review of Request for Proposal Form for solar energy installations. (Rob Hach - President, Wind and Solar Specialists)

*"Conservation is everybody's business"*



- R3. FY 15 Equipment Purchase – Results of proposals for replacement of a ¾ T. pickup truck. (Peterson)
- R4. Review options for shooting range operation policies. (Schneider, Board)
- R5. Capital Improvement Projects Update (Schneider)
  - 1. Stub Gray Shooting Range
  - 2. Brown's Lake manager's residence
  - 3. Snyder Bend Park office
- R6. Board member / staff reports – Board members and staff may report on meetings or activities that they have been involved with. (Board and staff)
  - 1. Nature Center activities (Snyder)
  - 2. Park activities (Peterson)
  - 3. Administrative items (Schneider)
    - a. Snyder Bend cabin long term rental update
    - b. Resource Technician position update
    - c. Long Range planning meeting – April board meeting
    - d. Land acquisition update
- R7. Closed Session of the Board requested by employee for annual evaluation of employee's performance. (Iowa Code 21.5 (1)(i))
- R8. Adjournment

**CALENDAR OF EVENTS:**

- 1. Volunteer Recognition and Awards Event, March 26, 2015 – DPNC
- 2. Conservation Board meeting, April 9, 2015 - DPNC

**WOODBURY COUNTY JUVENILE DETENTION CENTER**

Trosper-Hoyt Bldg.  
822 Douglas St. - 4th Floor  
Sioux City, Iowa 51101

Phone 712-279-6622  
Email: molsen@sioux-city.org  
Fax 712-234-2900

**6:00 a.m.**

**6:00 p.m.**

**February, 2015**

February 23, 2015		18
February 24, 2015	19	19
February 25, 2015	19	18
February 26, 2015	18	18
February 27, 2015	18	18
February 28, 2015	17	17

1

**March 2015**

March 1, 2015	17	17
March 2, 2015	18	

The Center averaged 18 youths per day during the 6:00 a.m. head count and 18 during the 6:00 p.m. check for a weekly average of 18 youths per day during the above week.

Of the eighteen youths detained on March 2, 2015, fourteen were identified gang members of seventy eight per cent of the population. Of the fourteen, six or were identified as hard-core members.

We are currently detaining four juveniles from the BIA and three from Dakota County.

Mark Olsen

Director

WCJDC

March 2, 2015



**WOODBURY COUNTY JAIL WEEKLY POPULATION REPORT AT 0600 HRS.**

<u>DATE</u>	<u>Day</u>	<u>DAILY TOTAL</u>	<u>LEC</u>	<u>ELECTRONIC MONITORING</u>	<u>PRAIRIE HILLS</u>	<u>FEDERAL PRISONERS</u>
2/28/15	Saturday	228	201	14	13	11
3/1/15	Sunday	230	204	14	12	11
3/2/15	Monday	217	194	14	9	11
3/3/15	Tuesday	230	203	15	12	11
3/4/15	Wednesday	226	198	16	12	11
3/5/15	Thursday	234	205	17	12	12
3/6/15	Friday	235	205	18	12	14
		<b>1600</b>	<b>1410</b>	<b>108</b>	<b>82</b>	<b>81</b>
<b>24 HOUR DAILY COUNT</b>						
<u>DATE</u>	<u>TOTAL</u>	<u>MALE</u>	<u>FEMALE</u>			
2/28/15	249	203	46			
3/1/15	250	208	42			
3/2/15	245	203	42			
3/3/15	253	211	42			
3/4/15	242	200	42			
3/5/15	248	206	42			
3/6/15	258	211	47			
	<b>1745</b>	<b>1442</b>	<b>303</b>			
*Highest population count each day						