



NOTICE OF MEETING OF THE WOODBURY COUNTY BOARD OF SUPERVISORS  
(JANUARY 26, 2016) (WEEK 4 OF 2016)

Agenda and Minutes also available at  
[www.woodburycountyiowa.gov](http://www.woodburycountyiowa.gov)

Larry D. Clausen 389-5329 [lclausen@woodburycountyiowa.gov](mailto:lclausen@woodburycountyiowa.gov)  
Mark A. Monson 204-1015 [mark@mudflap.com](mailto:mark@mudflap.com)  
Jaclyn D. Smith 898-0477 [ja-smith@woodburycountyiowa.gov](mailto:ja-smith@woodburycountyiowa.gov)  
Jeremy J. Taylor 259-7910 [taylor@woodburycountyiowa.gov](mailto:taylor@woodburycountyiowa.gov)  
Matthew A. Ung 490-7852 [matthewung@woodburycountyiowa.gov](mailto:matthewung@woodburycountyiowa.gov)

You are hereby notified a meeting of the Woodbury County Board of Supervisors will be held January 26, 2016 at 4:30 p.m. in the Basement of the Courthouse, 620 Douglas Street, Sioux City, Iowa for the purpose of taking official action on the agenda items shown hereinafter and for such other business that may properly come before the Board.

This is a formal meeting during which the Board may take official action on various items of business. If you wish to speak on an item, please follow the seven participation guidelines adopted by the Board for speakers.

1. Anyone may address the Board on any agenda item after initial discussion by the Board.
2. Speakers will approach the microphone one at a time and be recognized by the Chair.
3. Speakers will give their name, their address, and then their statement.
4. Everyone will have an opportunity to speak. Therefore, please limit your remarks to **three minutes on any one item.**
5. At the beginning of the discussion on any item, the Chair may request statements in favor of an action be heard first followed by statements in opposition to the action.
6. Any concerns or questions you may have which do not relate directly to a scheduled item on the agenda will also be heard under the final agenda item "Citizen Concerns."
7. For the benefit of all in attendance, please turn off all cell phones and other devices while in the Board Chambers.

---

**AGENDA**

- 4:15 p.m. 1. General Relief Appeal Hearing for R. W. {Iowa Code Section 21.5(1)(a)}  
**First Floor Board of Supervisors Meeting Room**
- 4:30 p.m. 2. Call Meeting to Order – Pledge of Allegiance to the Flag – Moment of Silence
3. Citizen Concerns Information
4. Approval of the agenda January 26, 2016 Action
5. Approval of the minutes of the January 19, 2016 meeting Action
6. Discussion and approval of claims Action
- 4:35 p.m. 7. Board Administration/Public Bidder – Karen James  
(Set time) a. Public Hearing and Sale of Property Parcel #090300 (aka 1206 22nd Street) Action
- 4:37 p.m. b. Public Hearing and Sale of Property Parcel #059190 (aka 1420 Center) Action  
(Set time) c. Approval of Resolution for Notice of Property Sale Parcel #524265 Action  
d. Approval of Resolution for Notice of Property Sale Parcel #059190 Action
8. Presentation of Resolution honoring Lt. Tony Wingert and Deputy David Hansen Information

9. Secondary Roads – Mark Nahra
- a. Receive and consider bids for Project Number L-B(W153)—73-97
  - b. Consideration of a resolution to revise the Secondary Roads FY 2016 to FY 2020 Construction Program
- Action  
Action

10. **Budget Review Discussion for FY 2017**

- a. Update on Tax Rate Report
- b. Building Services
  - 1. Trosper-Hoyt Building
  - 2. Prairie Hills Facility
  - 3. Building Service (Old Eagles Building)
  - 4. County Services Building (Tri-View)
- c. County Auditor
  - 1. Recorder/Vital Statistics
  - 2. Administration
  - 3. Elections:
    - Administration
    - General Election
- d. County Supervisors
  - 1. Refunds
  - 2. Medical Examiner
  - 3. Board of Supervisors Expense
  - 4. Board Administration
  - 5. Public Bidder
  - 6. Mail Services
  - 7. Communication Center
  - 8. Emergency Management
  - 9. Starcom Program
  - 10. Ambulance Services – SPI
  - 11. District Court Operations
  - 12. Court Appointment Juvenile
  - 13. Risk Management Services
  - 14. Hard Rock Gaming Fees – Non Tax
    - Siouxland Regional Transit
    - Woodbury County Senior Meal Program
  - 15. Woodbury County Solid Waste
  - 16. Soil Conservation
  - 17. Township Officers
  - 18. Infrastructure/Economic Development – Non Tax
    - Western Iowa Community Improvement Regional Housing
    - Senior Community Service Action Agency of Siouxland
    - Woodbury County Fair
  - 19. Debt Service Fund
  - 20. Veteran Affairs
    - Administration
    - IDVA Grant
    - Assistance

11. Human Resources – Ed Gilliland

- a. Approval of Memorandum of Personnel Transactions
  - b. AFSCME Juvenile Detention Ratified Agreement for Approval, Discussion and Action
  - c. AFSCME Courthouse Ratified Agreement for Approval Discussion and Action
- Action  
Action  
Action

- |   |             |
|---|-------------|
| d. AFSCME Assistant County Attorney Ratified Agreement, for Approval Discussion and Action              | Action      |
| 12. County Auditor – Patrick Gill<br>Amend and Adopt Bylaws of the Woodbury County Board of Supervisors | Action      |
| 13. Board of Supervisors – Jeremy Taylor<br>LEC Expansion Committee Substitution for RFQ Process        | Action      |
| 14. Reports on Committee Meetings   | Information |
| 15. Citizen's Concerns  | Information |
| 16. Board Concerns and Comments   | Information |

## ADJOURNMENT

*Subject to Additions/Deletions*

---

### CALENDAR OF EVENTS

- |                               |                   |   |
|-------------------------------|-------------------|---|
| <b>MONDAY, JANUARY 25</b>     | <b>6:00 p.m.</b>  | Zoning Commission Meeting, Board of Supervisors' Chambers   |
|                               | <b>7:30 p.m.</b>  | Fair Board Meeting, Woodbury County Fair Office, Fairgrounds  |
| <b>TUESDAY, JANUARY 26</b>    | <b>1:30 p.m.</b>  | Sioux Rivers Regional Governance Board Meeting, Plymouth County Courthouse Annex Building, 215 4th Ave. S.E., Le Mars, Iowa |
|                               | <b>2:00 p.m.</b>  | Decat Board Meeting, Western Hills AEA, Room F  |
| <b>MONDAY, FEBRUARY 1</b>     | <b>6:00 p.m.</b>  | Board of Adjustment meeting, Board of Supervisors' Chambers   |
| <b>TUESDAY, FEBRUARY 2</b>    | <b>4:45 p.m.</b>  | Veteran Affairs Meeting, Veteran Affairs Office, 1211 Tri-View Ave.   |
| <b>WEDNESDAY, FEBRUARY 3</b>  | <b>12:00 noon</b> | District Board of Health Meeting, 1014 Nebraska St.   |
| <b>THURSDAY, FEBRUARY 4</b>   | <b>5:00 p.m.</b>  | Conservation Board Meeting, Dorothy Pecaut Nature Center, Stone Park  |
| <b>WEDNESDAY, FEBRUARY 10</b> | <b>8:05 a.m.</b>  | Woodbury County Information Communication Commission, Board of Supervisors' Chambers  |
| <b>THURSDAY, FEBRUARY 11</b>  | <b>7:00 p.m.</b>  | Siouxland Mental Health Center, Board Meeting, 625 Court Street   |
|                               | <b>12:00 p.m.</b> | SIMPCO Board of Directors, 1122 Pierce St, Sioux City, Iowa   |
| <b>MONDAY, FEBRUARY 15</b>    | <b>4:30 p.m.</b>  | Community Action Agency of Siouxland Board Meeting, 2700 Leech  |
| <b>WEDNESDAY, FEBRUARY 17</b> | <b>12:00 noon</b> | Siouxland Economic Development Corporation Meeting, 617 Pierce St., Ste. 202, Sioux City, Iowa                              |
|                               | <b>10:00 a.m.</b> | Senior Center Board of Directors Meeting, 313 Cook Street   |
| <b>THURSDAY, FEBRUARY 18</b>  | <b>11:00 a.m.</b> | Siouxland Regional Transit Systems (SRTS) Board Meeting, SIMPCO Office, 1122 Pierce St., Sioux City, Iowa                   |

Woodbury County is an Equal Opportunity Employer. In compliance with the Americans with Disabilities Act, the County will consider reasonable accommodations for qualified individuals with disabilities and encourages prospective employees and incumbents to discuss potential accommodations with the Employer.

*Federal and state laws prohibit employment and/or public accommodation discrimination on the basis of age, color, creed, disability, gender identity, national origin, pregnancy, race, religion, sex, sexual orientation or veteran's status. If you believe you have been discriminated against, please contact the Iowa Civil Rights Commission at 800-457-4416 or Iowa Department of Transportation's civil rights coordinator. If you need accommodations because of a disability to access the Iowa Department of Transportation's services, contact the agency's affirmative action officer at 800-262-0003.*



**JANUARY 19, 2016 —THIRD MEETING OF THE WOODBURY COUNTY BOARD OF SUPERVISORS**

The Board of Supervisors met on Monday, January 19, 2016 at 1:30 p.m. Board members present were Monson, Ung, Smith, and Taylor; Clausen arrived at 2:15 PM. Staff members present were Karen James, Board Administrative Coordinator, Dennis Butler, Finance/Operations Controller, Ed Gilliland, Human Resources Director and Patrick Gill, Auditor/Clerk to the Board.

1a. Update on Tax Rate Report.

1b. Motion by Clausen second by Monson to receive the Sheriff Uniform Patrol budget reduced by \$24,476.00. Carried 5-0.

Motion by Clausen second by Smith to receive the Sheriff CF Traffic Control budget as submitted. Carried 5-0.

Motion by Monson second by Smith to receive the Sheriff investigations budget increased by \$24,476.00. Carried 5-0.

Motion by Smith second by Monson to receive the Sheriff HIDTA – Federal Reimbursement budget as submitted 5-0. Carried.

Motion by Clausen second by Monson to receive the Sheriff US Marshall – Federal Reimbursement budget as submitted. Carried 5-0.

Motion by Monson second by Smith to receive the Sheriff Drug Task Force – Federal Reimbursement budget as submitted. Carried 5-0.

Motion by Clausen second by Smith to receive the revenue side of the Sheriff's Correctional Facility – LEC budget increased by \$10,000.00. Carried 5-0.

Motion by Monson second by Clausen to receive the Sheriff Correctional Facility – LEC budget reduced by \$20,000.00. Carried 5-0.

Motion by Ung second by Monson to receive the Sheriff Correctional Facility – Prairie Hills budget reduced by \$47,000.00. Carried 5-0.

Motion by Monson second by Clausen to receive the Sheriff Administration budget reduced by \$31,600.00. Carried 5-0.

Motion by Smith second by Ung to receive the Sheriff Civil Division budget as submitted. Carried 5-0.

Motion by Monson second by Smith to receive the Sheriff Highway Safety Grant budget as submitted. Carried 5-0.

Motion by Smith second by Monson to receive the Sheriff Crime Prevention budget as submitted. Carried 5-0.

Motion by Monson second by Ung to eliminate the Sheriff DARE Grant budget. Carried 5-0.

Motion by Clausen second by Monson to receive the Sheriff Courtroom Security budget reduced by \$2,000.00. Carried 5-0.

Motion by Clausen second by Smith to receive the Sheriff Courthouse Security budget as submitted. Carried 5-0.

Motion by Monson second by Ung to receive the Rural Services Sheriff Uniform Patrol budget as submitted. Carried 5-0.

Motion by Clausen second by Monson to receive the Sheriff Forfeiture budget as submitted. Carried 5-0.

Motion by Monson second by Smith to receive and approve the canvass of the Garretson and Farmers Drainage Districts. Carried 5-0.

We the undersigned Members of the Board of Supervisors and ex-officio Board of County Canvassers, for Woodbury County, hereby certify the following to be a true and correct abstract of the ballots cast in this county at the **Garretson Drainage District Elections for Sub-District #1** held on the **16<sup>th</sup>** day of **January, 2016** as shown by the tally list returned from the election precincts.

For the office of **Garretson Drainage District Trustee for Sub-District #1** there were eight hundred and forty-three (843) ballots cast.

**Charles Widman** Received eight hundred and forty-three (843) votes

We therefore declare **Charles Widman** duly elected to the office of **Garretson Drainage District Trustee for Sub-District #1** for a term of three (3) years (2016, 2017, and 2018).

Motion by second by to receive for signatures the canvass of the Garretson Drainage District election held January 16, 2016. Carried . Copy filed.

We the undersigned Members of the Board of Supervisors and ex-officio Board of County Canvassers, for Woodbury County, hereby certify the following to be a true and correct abstract of the ballots cast in this county at the **Farmers Drainage District Election for Sub-District #1** held on the **16<sup>th</sup>** day of **January, 2016** as shown by the tally list returned from the election precinct.

For the office of **Farmers Drainage District Trustee for Sub-District #1** there were two-thousand, three-hundred and seventy-two (2,372) ballots cast as follows:

**Gary Walters** Received two-thousand, three-hundred and seventy-two (2,372) votes

We therefore declare **Gary Walters** duly elected to the office of **Farmers Drainage District Trustee for Sub-District #1** for a term of three (3) years (2016, 2017, and 2018).

1c. Motion by Monson second by Ung to receive the Human Resources budget as submitted. Carried 5-0.

1d. Motion by Monson second by Clausen to receive the Building Services Courthouse budget reduced by \$28,740.00. Carried 5-0.

Motion by Ung second by Monson to receive the Building Services LEC budget reduced by \$23,360.00. Carried 5-0.

Motion by Ung second by Clausen to postpone action to review the Building Services Trospen-Hoyt budget, the Building Services Prairie Hills budget, the Building Services (Old Eagles Building) budget and the Building Services County Services Building (Tri-View) budget. Carried 5-0.

2. The meeting was called to order – Pledge of Allegiance to the Flag – Moment of Silence.

3. Citizen concerns.

4. Motion by Clausen second by Monson to approve the Agenda as submitted for January 19, 2016. Carried 5-0. Copy filed.

5. Motion by Monson second by Ung to approve the minutes of the January 12, 2016 Board meeting. Carried 4-0; Smith abstained. Copy filed.

6. Motion by Clausen second by Smith to approve the claims totaling \$736,250.76. Carried 5-0. Copy filed.

- 7a. Kenny Schmitz, Building Services Director, opened responses to a request for qualifications to retain Architectural services. Responses were submitted by RML Architects, M+ Architects and Cannon Moss Brygger Architects.

Motion by Taylor second by Monson to receive the responses and refer them to a committee appointed by the Board for review and recommendation. Carried 5-0. Copy filed.

- 7b. Motion by Monson second by Ung to award the bid for inmate clothes washer replacement to Horwath Laundry Equipment for \$9,999.00. Carried 5-0. Copy filed.

8. Motion by Clausen second by Ung to receive for signatures a Resolution Thanking and Commending Resolution Honoring Two Lifesaving Deputies. Carried 5-0.

**RESOLUTION #12,319**  
**A RESOLUTION THANKING AND COMMENDING**  
**RESOLUTION HONORING TWO LIFESAVING DEPUTIES**

Whereas a 24-year-old woman who went missing was found nearly two days later lying in severe weather conditions in rural Woodbury County by two deputies in the county sheriff's office;

Whereas these deputies, Deputy David Hansen and Lieutenant Tony Wingert, were able to locate the missing person in the snow and suffering from extreme exposure to the weather conditions;

Whereas the individual was transported in Lieutenant Wingert's patrol vehicle to a waiting Merville ambulance where she was then taken to Mercy Medical Center;

And whereas both Deputy Hansen and Lieutenant Wingert's actions show exemplary service as they are credited for saving this individual's life;

Now therefore be it resolved that the Woodbury County Board of Supervisors thanks, commends, and honors the service actions of Deputy Hansen and Lieutenant Wingert and wishes them the absolute best as they continue to show honor in their steadfast commitment to the citizens of Woodbury County.

SO RESOLVED this 19th day of January, 2016  
WOODBURY COUNTY BOARD OF SUPERVISORS  
Copy filed.

- 9a. Motion by Clausen second by Monson to approve the appointment of Paul Handke, P/T Operations Officer, Emergency Services Dept., effective 1-20-16., \$14.78/hour. Job Vacancy Posted 11-12-15. Entry Level Salary: \$13.46 to \$14.87/hr.; and the reclassification of Kelly Hansen, Service Officer, Veteran Affairs Dept., effective 02-04-16, \$19.22/hour, 4%=\$.74/hour. Per Wag Plan comparability w/AFSCME Courthouse Contract, from Grade 5/Step 1 to Grade 5/Step2. Carried 5-0. Copy filed.
- 9b. Motion by Monson second by Ung postpone action to approve the AFSCME Juvenile Detention Tentative Agreement, the AFSCME Courthouse Tentative Agreement and the AFSCME Assistant County Attorney Tentative Agreement. Carried 5-0. Copy filed.
- 10a. Motion by Monson second by Clausen to approve the lifting of tax suspension for Michael Anderson, 3117 Garretson Ave, Sioux City. Carried 5-0. Copy filed.
- 10b. Motion by Monson second by Smith to approve the lifting of tax suspension for Dorothy Lalumendre, 2701 Center St., Sioux City. Carried 5-0. Copy filed.
- 11a. Motion by Clausen second by Ung to approve and authorize the Chairperson to sign a Resolution approving abatement for taxes for Karla Fergen, building on leased land for a mobile home, parcel #884730301972, taxes for 2009-10 through 2014-15, total \$170.00 plus interest. Carried 5-0.

**RESOLUTION #12,320**  
**RESOLUTION APPROVING ABATEMENT OF TAXES**

**WHEREAS**, Karla Fergen. is the titleholder of a building on leased land Parcel #884730301972 located in Woodbury County, Iowa and legally described as follows:

Parcel #884730301972

SERGEANT BLUFF CITY B/LL LOT 367 LOC ON P 641374 RAIL ADDN

**WHEREAS**, the above-stated property has taxes payable Including special assessments and the parcel is owned by Karla Fergen

**WHEREAS**, these taxes are uncollectable or impractical to pursue collection through personal judgment or tax sale

**WHEREAS**, the Board of Supervisors sees that good cause exists for the abatement of these taxes and

**NOW, THEREFORE, BE IT RESOLVED**, that the Woodbury County Board of Supervisors hereby abates the taxes owing on the above parcel according to Code of Iowa, 445.16 for the taxes owed and hereby directs the Woodbury County Treasurer to abate these aforementioned taxes from the tax records.

**SO RESOLVED** this 19th day of January, 2016  
WOODBURY COUNTY BOARD OF SUPERVISORS  
Copy filed.

- 11b. Motion by Clausen second by Smith to approve and authorize the Chairperson to sign a Resolution approving abatement for taxes for Carolyn Kay Jacobsen, building on leased land for a mobile home, parcel #894432131912, taxes for 2009-10 through 2014-15, total \$186.00 plus interest. Carried 5-0.

**WOODBURY COUNTY, IOWA**  
**RESOLUTION #12,321**  
**RESOLUTION APPROVING ABATEMENT OF TAXES**

**WHEREAS**, Carolyn Kay Jacobsen is the titleholder of a building on leased land Parcel #894432131912 located in Woodbury County, Iowa and legally described as follows:

Parcel #894432131912

MOVILLE CITY OF B/LL LOT 25 LOC ON P #622995 UNPLATTED LA NDS 689' E & W X 230 ' N & S S OF  
BLK 3 HALLS ADDN 32-89-44

**WHEREAS**, the above-stated property has taxes payable Including special assessments and the parcel is owned by Carolyn Kay Jacobsen and

**WHEREAS**, these taxes are uncollectable or impractical to pursue collection through personal judgment or tax sale

**WHEREAS**, the Board of Supervisors sees that good cause exists for the abatement of these taxes and

**NOW, THEREFORE, BE IT RESOLVED**, that the Woodbury County Board of Supervisors hereby abates the taxes owing on the above parcel according to Code of Iowa, 445.16 and hereby directs the Woodbury County Treasurer to abate these aforementioned taxes from the tax records.

**SO RESOLVED** this 19th day of January, 2016.  
WOODBURY COUNTY BOARD OF SUPERVISORS  
Copy filed.

- 11c. Motion by Monson second by Clausen to approve and authorize the Chairperson to sign a Resolution approving abatement for taxes for Virasack Phonphiboun, building on leased land for a mobile home, parcel #884730301923, taxes for 2012-13 through 2014-15, total \$74.00 plus interest. Carried 5-0.

**WOODBURY COUNTY, IOWA  
RESOLUTION #12,322  
RESOLUTION APPROVING ABATEMENT OF TAXES**

**WHEREAS**, Virasack Phonphiboun is the titleholder of a building on leased land Parcel #884730301923, located in Woodbury County, Iowa and legally described as follows:

Parcel #884730301923

SERGEANT BLUFF CITY B/LL LOT 246 LOC ON P 641374 RAIL ADDN

**WHEREAS**, the above-stated property has taxes payable Including special assessments and the parcel is owned by Virasack Phonphiboun, and

**WHEREAS**, these taxes are uncollectable or impractical to pursue collection through personal judgment or tax sale

**WHEREAS**, the Board of Supervisors sees that good cause exists for the abatement of these taxes and

**NOW, THEREFORE, BE IT RESOLVED**, that the Woodbury County Board of Supervisors hereby abates the taxes owing on the above parcel according to Code of Iowa, 445.16 for the taxes owed and hereby directs the Woodbury County Treasurer to abate these aforementioned taxes from the tax records.

**SO RESOLVED** this 19th day of January, 2016  
WOODBURY COUNTY BOARD OF SUPERVISORS  
Copy filed.

- 12a. Motion by Smith second by Clausen to approve the request of \$1,000 from the Rural Economic Development Department budget to support the regional entrepreneur grant competition "Swimming with the Sharks". Carried 3-2 on a roll call vote; Taylor and Ung opposed. Copy filed.
- 12b. Motion by Monson second by Smith to receive for signatures a Resolution to provide a financial contribution in support of the City of Correctionville and their filing of an application for funding with the vision Iowa community attraction and tourism grant program. Carried 5-0.

**WOODBURY COUNTY, IOWA  
RESOLUTION #12,323  
A RESOLUTION TO PROVIDE A FINANCIAL CONTRIBUTION IN SUPPORT OF THE CITY  
OF CORRECTIONVILLE AND THEIR FILING OF AN APPLICATION FOF FUNDING WITH  
THE VISION IOWA COMMUNITY ATTRACTION AND TOURISM GRANT PROGRAM**

**WHEREAS**, the City of Correctionville, is an incorporated municipality in Woodbury County, Iowa, and owner of the public pool located at 819 8<sup>th</sup> Street, Correctionville, Iowa, 51016; and

**WHEREAS**, the Woodbury County Board of Supervisors supports the need for this project to repair and make significant improvements to the public pool; and

**WHEREAS**, such proposed improvements will create an expanded recreational and quality of life amenity for all residents of Correctionville and the surrounding rural areas and small communities within Woodbury County through new and expanded recreational, wellness, and education opportunities, and



**WHEREAS**, the City of Correctionville has successfully approved a bond issue and have secured private grants along with local funding to carry out the project's scope of work; and is submitting an application for a Vision Iowa Community Attraction and Tourism program grant award to supplement funds already secured; and

**WHEREAS**, the Vision Iowa Board of Directors requires county governments to provide a direct financial contribution to Vision Iowa-eligible projects located within its jurisdiction as part of the project's total funding mix; and the City of Correctionville will not be able to complete their preservation and redevelopment of their public pool without the aid of a Vision Iowa program grant; and

**NOW, THEREFORE IT BE RESOLVED BY THE BOARD OF SUPERVISORS THAT WOODBURY COUNTY** does hereby demonstrate its full support for the City of Correctionville Project with a financial contribution of \$5,000 to the proposed public pool improvements. Woodbury County's financial commitment to this project is contingent upon the successful award of a Vision Iowa program grant.

**Dated this 19th day of January 2016.**

WOODBURY COUNTY BOARD OF SUPERVISORS  
Copy filed.

13a. Motion by Monson second by Clausen to approve and authorize the 2016 amendment to development agreement between Woodbury County and CF Industries Nitrogen, LLC related to State of Iowa High Quality Jobs Program. Carried 5-0. Copy filed.

Motion by Ung second by Smith to authorize the Chairperson to sign a Resolution and development agreement between Woodbury County and CF Industries Nitrogen, LLC. Carried 5-0.

**RESOLUTION #12,324**

**APPROVING 2016 AMENDMENT TO DEVELOPMENT AGREEMENT BETWEEN WOODBURY COUNTY AND CF INDUSTRIES, LLC RELATED TO STATE OF IOWA HIGH QUALITY JOBS PROGRAM**

WHEREAS, Woodbury County (the "County") and CF Industries Nitrogen, LLC (the "Company") have entered into a development agreement dated as of the 9<sup>th</sup> day of September, 2013 (the "Development Agreement"), pursuant to which the Company has agreed to construct a facility (the "Project") and the County has agreed to provide certain incentives; and

WHEREAS, in the Development Agreement, the Company agreed to invest not less than \$1,690,000,000 on capital improvements; and

WHEREAS, the Company now anticipates that its capital improvement investment will be not less than \$2,100,000,000; and

WHEREAS, in the Development Agreement, the County agreed to provide an exemption from property taxation for new taxable valuation that would result from the construction of the Project, beginning with the January 1, 2016 tax assessment year and continuing through the January 1, 2035 tax assessment year; and

WHEREAS, it has been proposed that an amendment to the Development Agreement be approved, in the form attached to this resolution as Exhibit A (the "2016 Amendment"), which would modify the Property Valuation Exemption Schedule shown as Exhibit C to the Development Agreement to add 100% exemption for valuation added in the January 1, 2015 assessment year, to delete any exemption for the January 1, 2035 assessment year, and to modify the exemptions in the intervening years to equalize the economic loss of the exemption in 2035;

NOW, THEREFORE, IT IS RESOLVED by the Board of Supervisors of Woodbury County, Iowa, as follows:

Section 1. The 2016 Amendment to Development Agreement attached hereto as Exhibit A is hereby approved.

Section 2. All resolutions or parts of resolutions in conflict herewith are hereby repealed.

Passed and approved January 19, 2016.  
WOODBURY COUNTY BOARD OF SUPERVISORS  
Copy filed.

- 13b. An update on Tax Rate Report was presented.
- 14a. Motion by Monson second by Ung to approve and authorize the Chairperson to sign a certification of completion for L.A. Carlson Construction. Carried 5-0. Copy filed.
- 14b. Motion by Smith second by Clausen to approve and authorize the Chairperson to sign a certification of completion for Dixon Construction. Carried 5-0. Copy filed.
- 14c. Motion by Monson second by Ung to approve and authorize the Chairperson to sign final payment voucher for Knife River Paving Corporation for project FM-CO97(122)—55-97. Carried 5-0. Copy filed.
- 14d. Motion by Smith second by Clausen to approve and authorize the Chairperson to sign final payment voucher for Knife River Paving Corporation for project STP-S-CO97(110)005E-97. Carried 5-0. Copy filed.
- 14e. Motion by Monson second by Clausen to reapprove the construction plans for project #STP-S-CO97(127)—5E-97. Carried 5-0. Copy filed.

The Board recessed for a meeting of the Wolf Creek Drainage District.

The supervisor meeting was called back to order.

- 16. Reports on committee meetings.
- 17. Citizen Concerns
- 18. Board concerns and comments.

The Board adjourned the regular meeting until January 26, 2016.

Meeting sign in sheet. Copy filed.

#7a

**RESOLUTION #**

**NOTICE OF PROPERTY SALE**

**Parcel #090300**

**WHEREAS** Woodbury County, Iowa was the owner under a tax deed of a certain parcel of real estate described as:

**Middle One Third of the South One Hundred and Ten feet of the North half of Lot Four of Cary's Subdivision in Sioux City, situated in the County of Woodbury and State of Iowa  
(1206 22<sup>nd</sup> Street)**

**NOW THEREFORE,**

**BE IT RESOLVED** by the Board of Supervisors of Woodbury County, Iowa as follows:

1. That a public hearing on the aforesaid proposal shall be held on the **26<sup>th</sup> Day of January, 2016 at 4:35 o'clock p.m.** in the basement of the Woodbury County Courthouse.
2. That said Board proposes to sell the said parcel of real estate at a public auction to be held on the **26<sup>th</sup> Day of January, 2016**, immediately following the closing of the public hearing.
3. That said Board proposes to sell the said real estate to the highest bidder at or above a **total minimum bid of \$1.00** plus recording fees.
4. That this resolution, preceded by the caption "Notice of Property Sale" and except for this subparagraph 4 be published as notice of the aforesaid proposal, hearing and sale.

Dated this 12<sup>th</sup> Day of January, 2016.

ATTEST:

WOODBURY COUNTY BOARD OF SUPERVISORS

\_\_\_\_\_  
Patrick F. Gill  
Woodbury County Auditor  
and Recorder

\_\_\_\_\_  
Jeremy J. Taylor, Chairman

REQUEST FOR MINIMUM BID

Name: Jose Villagomez Date: 7/31/15

Address: 1202 22<sup>nd</sup> St. Phone: \_\_\_\_\_

Address or approximate address/location of property interested in:  
1206 22<sup>nd</sup> St

GIS # 894721282014

*\*This portion to be completed by Board Administration \**

Legal Description:

Middle 1/3 of the South 110 feet of  
the North half of Lot 4 of Cary's  
Subdivision in Sioux City, situated in the  
County of Woodbury and State of Iowa

Tax Sale #/Date: #46 12/31/1968 Parcel # 090300

Tax Deeded to Woodbury County on: 1/29/1970

Current Assessed Value: Land \$1,800 Building 0 Total \$1,800

Approximate Delinquent Real Estate Taxes: 0

Approximate Delinquent Special Assessment Taxes: 0

\*Cost of Services: \$5

Inspection to: Mark Monson Date: 7/31/15

Minimum Bid Set by Supervisor: \$100

Date and Time Set for Auction: \_\_\_\_\_

\* Includes: Abstractors costs; Sheriff's costs; publishing costs; and mailing costs.



Overview



Legend

- Roads
-  Corp Boundaries
-  Townships
-  Sections
- Residential Sales**
-  2013
-  2014
-  2015
-  Parcels

Parcel ID	894721282014	Alternate ID	090300	Owner Address	WOODBURY COUNTY IOWA
Sec/Twp/Rng	0-0-0	Class	R		620 DOUGLAS ST RM 104
Property Address	1206 22ND ST	Acreage	n/a		SIOUX CITY, IA 51101-0000
	SIOUX CITY				
District	087 SC LL SIOUX CITY COMM				
Brief Tax Description	CARYS SUB DIV				
	M 1/3 S 110 FT N 1/2				
	LOT 4				
	<i>(Note: Not to be used on legal documents)</i>				

Date created: 7/31/2015  
 Last Data Upload: 7/31/2015 3:49:26 AM



Beacon™

Woodbury County, IA / Sioux City



Overview



Legend

- Roads
- Corp Boundaries
- Townships
- Sections
- Residential Sales
- 2013
- 2014
- 2015
- Parcels

Parcel ID 894721282014  
 Sec/Twp/Rng 0-0-0  
 Property Address 1206 22ND ST  
 SIOUX CITY

Alternate ID 090300  
 Class R  
 Acreage n/a

Owner Address WOODBURY COUNTY IOWA  
 620 DOUGLAS ST RM 104  
 SIOUX CITY, IA 51101-0000

District 087 SC LL SIOUX CITY COMM  
 Brief Tax Description CARYS SUB DIV  
 M 1/3 S 110 FT N 1/2  
 LOT 4

(Note: Not to be used on legal documents)

Date created: 7/31/2015  
 Last Data Upload: 7/31/2015 3:49:26 AM



Developed by  
 The Schneider Corporation

#7b

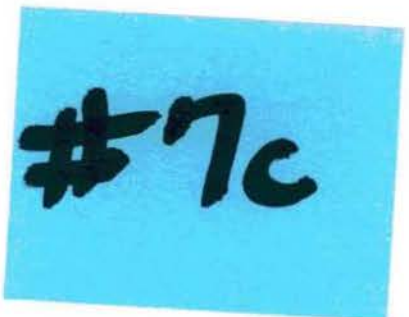
**WOODBURY COUNTY, IOWA  
BOARD ADMINISTRATION  
MEMORANDUM**

TO: Board Members  
FROM: Heather Satterwhite  
DATE: January 21, 2016  
RE: Sale of Property at 1420 Center Street

On January 12<sup>th</sup> you approved the sale of property at 1420 Center Street. This was scheduled & published for a sale date of January 26<sup>th</sup>. Since then, it was discovered there was an error in the legal description. I am resubmitting with the correct legal description which would move the date of sale to February 9<sup>th</sup>.

If there are any questions, please let me know.

Thank you.



**RESOLUTION #**

**NOTICE OF PROPERTY SALE**

**Parcel #524265**

**WHEREAS** Woodbury County, Iowa was the owner under a tax deed of a certain parcel of real estate described as:

**The East One-half of the East One-half of Lots One and Two, Block One, Vine Place Addition, City of Sioux City, Woodbury County, Iowa  
(411 21<sup>st</sup> Street)**

**NOW THEREFORE,**

**BE IT RESOLVED** by the Board of Supervisors of Woodbury County, Iowa as follows:

1. That a public hearing on the aforesaid proposal shall be held on the **9<sup>th</sup> Day of February, 2016 at 4:35 o'clock p.m.** in the basement of the Woodbury County Courthouse.
2. That said Board proposes to sell the said parcel of real estate at a public auction to be held on the **9<sup>th</sup> Day of February, 2016**, immediately following the closing of the public hearing.
3. That said Board proposes to sell the said real estate to the highest bidder at or above a **total minimum bid of \$513.00** plus recording fees.
4. That this resolution, preceded by the caption "Notice of Property Sale" and except for this subparagraph 4 be published as notice of the aforesaid proposal, hearing and sale.

Dated this 26<sup>th</sup> Day of January, 2016.

ATTEST:

WOODBURY COUNTY BOARD OF SUPERVISORS

\_\_\_\_\_  
Patrick F. Gill  
Woodbury County Auditor  
and Recorder

\_\_\_\_\_  
Jeremy J. Taylor, Chairman



REQUEST FOR MINIMUM BID

Name: Sarah & David Kommann Date: 6/20/14  
Address: 2207 Douglas St. Phone: 444-1636

Address or approximate address/location of property interested in:

411 21st Street

GIS# 894721158009

\*This portion to be completed by Board Administration\*

Legal Description:

The East one-half of the East one-half of Lots one and two, Block one, Vine Place Addition, City of Sioux City, Woodbury County, Iowa

Tax Sale #/Date: 937 6/18/12 Parcel # 524265

Tax Deeded to Woodbury County on: /

Current Assessed Value: Land \$4,000 Building 0 Total \$

Approximate Delinquent Real Estate Taxes: \$831

Approximate Delinquent Special Assessment Taxes: \$3,816

\*Cost of Services: \$113

Inspection to: George Baykin Date: 6/20/14

Minimum Bid Set by Supervisor: \$400 plus the \$113 for cost of services

Date and Time Set for Auction: February 9th @ 4:35 \$513

\* Includes: Abstractors costs; Sheriff's costs; publishing costs; and mailing costs.



Overview



Legend

- Roads
- Corp Boundaries
- Townships
- Sections
- Residential Sales
  - 2013
  - 2014
  - 2015
- Parcels

Parcel ID	894721158009	Alternate ID	524265	Owner Address	WOODBURY COUNTY
Sec/Twp/Rng	0-0-0	Class	R		WOODBURY COUNTY COURTHOUSE
Property Address	411 21ST ST	Acreage	n/a		620 DOUGLAS ST
	SIOUX CITY				SIOUX CITY, IA 51101-0000
District	087 SC LL SIOUX CITY COMM				
Brief Tax Description	VINE PLACE				
	E 1/2 E 1/2 LOTS 1 &				
	2 BLK 1				
	<i>(Note: Not to be used on legal documents)</i>				

Date created: 1/21/2016  
 Last Data Upload: 1/20/2016 11:48:17 PM

**Beacon**<sup>TM</sup> Woodbury County, IA / Sioux City



Overview



Legend

- Roads
- Corp Boundaries
- Townships
- Sections
- Residential Sales
  - 2013
  - 2014
  - 2015
- Parcels

Parcel ID	894721158009	Alternate ID	524265	Owner Address	WOODBURY COUNTY
Sec/Twp/Rng	0-0-0	Class	R		WOODBURY COUNTY COURTHOUSE
Property Address	411 21ST ST	Acreege	n/a		620 DOUGLAS ST
	SIOUX CITY				SIOUX CITY, IA 51101-0000
District	087 SC LL SIOUX CITY COMM				
Brief Tax Description	VINE PLACE				
	E 1/2 E 1/2 LOTS 1 &				
	2 BLK 1				
	(Note: Not to be used on legal documents)				

Date created: 1/21/2016  
 Last Data Upload: 1/20/2016 11:48:17 PM

 Developed by  
 The Schneider Corporation

#7d

**RESOLUTION #**

**NOTICE OF PROPERTY SALE**

**Parcel #059190**

**WHEREAS** Woodbury County, Iowa was the owner under a tax deed of a certain parcel of real estate described as:

**W 85 feet of Lot Twelve in Block Thirty-Nine, North Sioux City Addition, Sioux City, Woodbury County, Iowa  
(1420 Center Street)**

**NOW THEREFORE,**

**BE IT RESOLVED** by the Board of Supervisors of Woodbury County, Iowa as follows:

1. That a public hearing on the aforesaid proposal shall be held on the **9<sup>th</sup> Day of February, 2016 at 4:37 o'clock p.m.** in the basement of the Woodbury County Courthouse.
2. That said Board proposes to sell the said parcel of real estate at a public auction to be held on the **9<sup>th</sup> Day of February, 2016**, immediately following the closing of the public hearing.
3. That said Board proposes to sell the said real estate to the highest bidder at or above a **total minimum bid of \$115.00** plus recording fees.
4. That this resolution, preceded by the caption "Notice of Property Sale" and except for this subparagraph 4 be published as notice of the aforesaid proposal, hearing and sale.

Dated this 26<sup>th</sup> Day of January, 2016.

ATTEST:

WOODBURY COUNTY BOARD OF SUPERVISORS

\_\_\_\_\_  
Patrick F. Gill  
Woodbury County Auditor  
and Recorder

\_\_\_\_\_  
Jeremy J. Taylor, Chairman

**REQUEST FOR MINIMUM BID**

Name: Bert Fish Tire - Jori Date: 9-21-15  
Address: 1400 Center St. Phone: 258-0653

Address or approximate address/location of property interested in:

1420 Center St.

GIS PIN # 8947 20 387 001

*\*This portion to be completed by Board Administration \**

Legal Description:

W85 ft Lot 12 Block 39, North Sioux City Addition

Tax Sale #/Date: 677 6/21/2004 Parcel # 059190

Tax Deeded to Woodbury County on: 7-28-06 by Quitclaim deed

Current Assessed Value: Land \$3,100 Building 0 Total \$3,100

Approximate Delinquent Real Estate Taxes: —

Approximate Delinquent Special Assessment Taxes: —

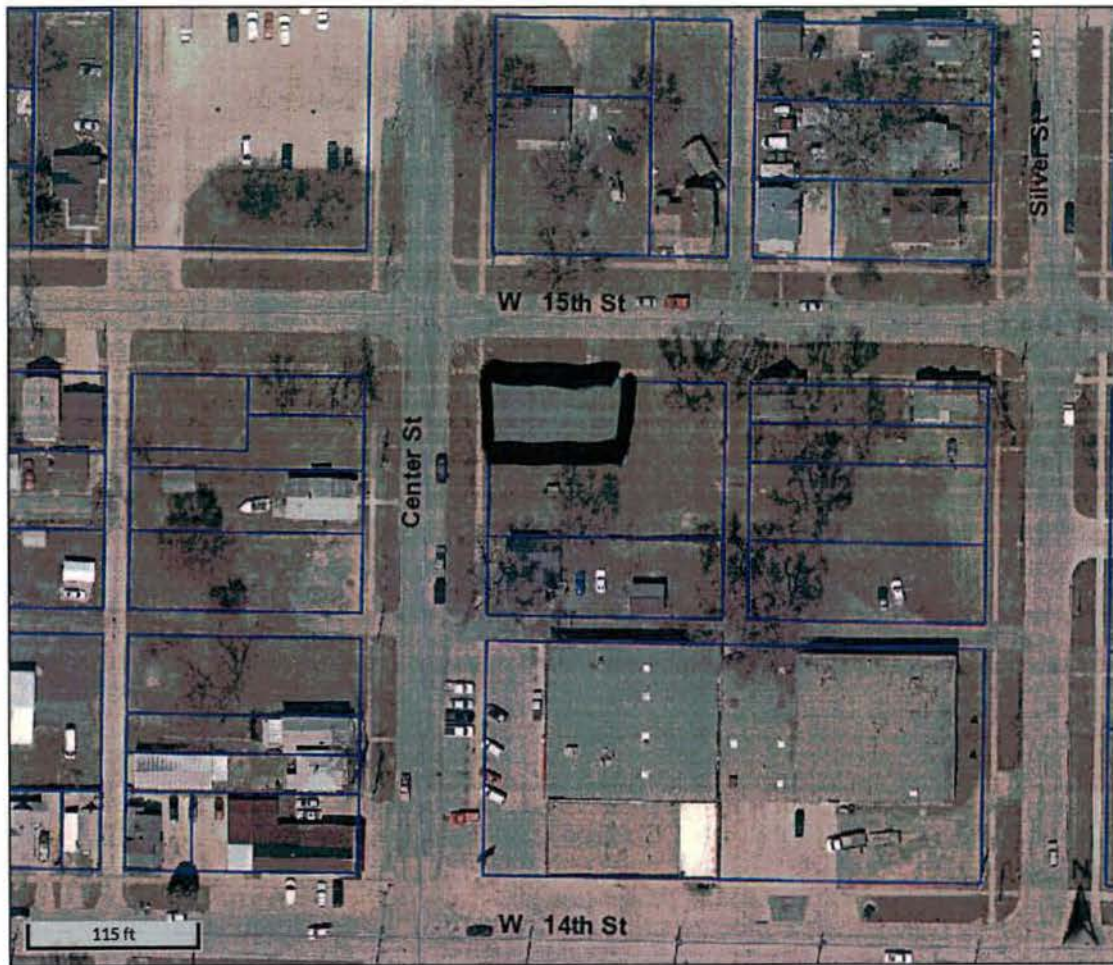
\*Cost of Services: —

Inspection to: Mark Monson Date: 9-21-15

Minimum Bid Set by Supervisor: \$ 115

Date and Time Set for Auction: \_\_\_\_\_

\* Includes: Abstractors costs; Sheriff's costs; publishing costs; and mailing costs.



Overview

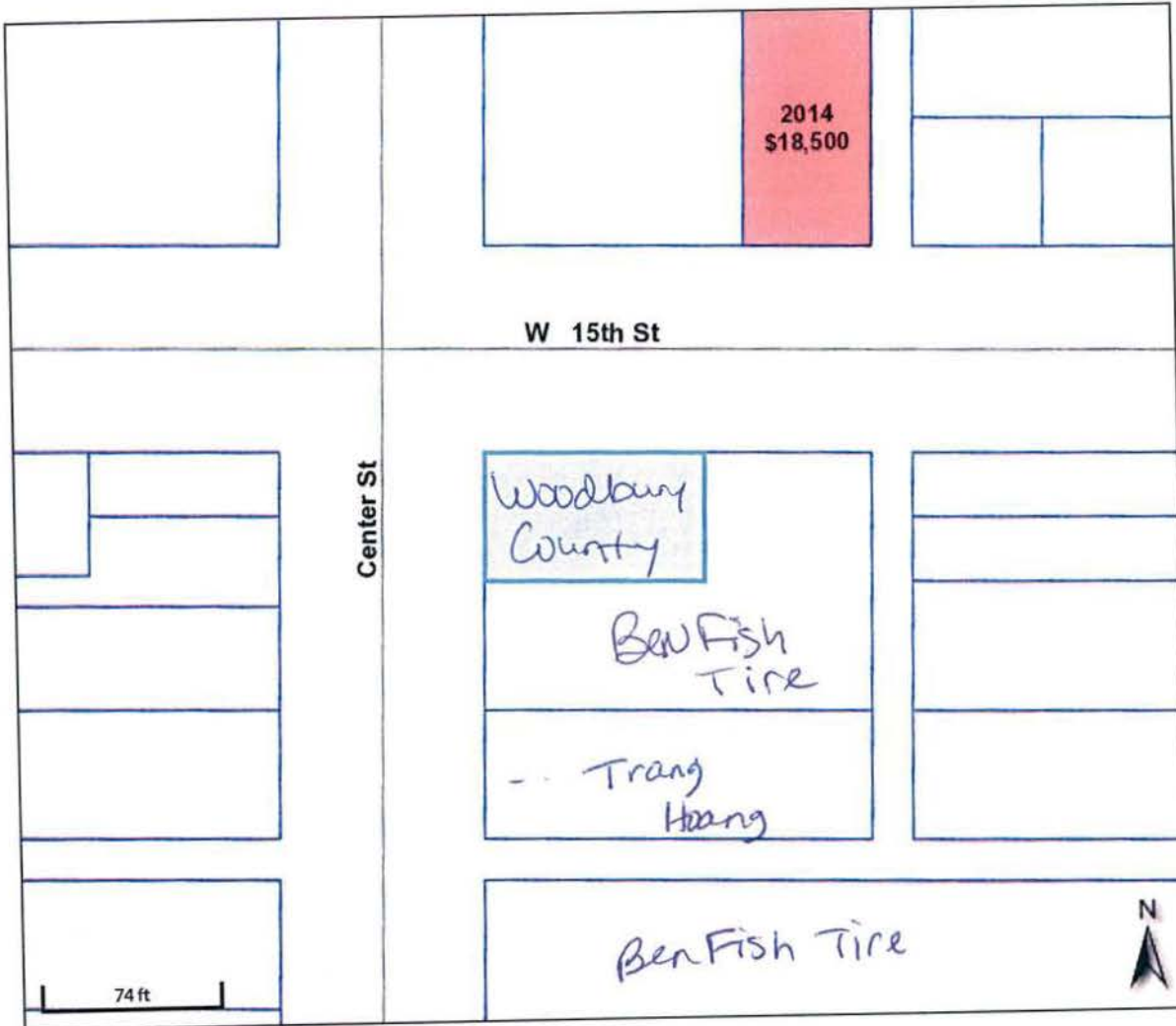


Legend

- Roads
- Corp Boundaries
- Townships
- Sections
- Residential Sales**
- 2013
- 2014
- 2015
- Parcels

Parcel ID	894720387001	Alternate ID	059190	Owner Address	WOODBURY COUNTY
Sec/Twp/Rng	0-0-0	Class	C		620 DOUGLAS ST
Property Address	1420 CENTER ST	Acreage	n/a		SIOUX CITY, IA 51101-0000
	SIOUX CITY				
District	087 SC LL SIOUX CITY COMM				
Brief Tax Description	NORTH SIOUX CITY				
	W 85 FT LOT 12 BLK 3				
	9				
	<i>(Note: Not to be used on legal documents)</i>				

Date created: 9/21/2015  
 Last Data Upload: 9/19/2015 12:21:28 AM



Overview



Legend

- Roads
- Corp Boundaries
- Townships
- Sections
- Residential Sales
- 2013
- 2014
- 2015
- Parcels

Parcel ID 894720387001  
 Sec/Twp/Rng 0-0-0  
 Property Address 1420 CENTER ST  
 SIOUX CITY

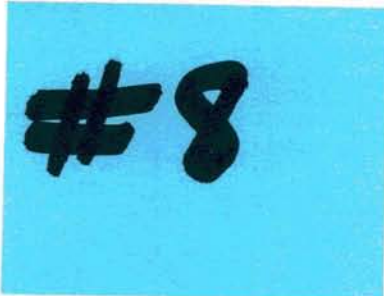
Alternate ID 059190  
 Class C  
 Acreage n/a

Owner Address WOODBURY COUNTY  
 620 DOUGLAS ST  
 SIOUX CITY, IA 51101-0000

District 087 SC LL SIOUX CITY COMM  
 Brief Tax Description NORTH SIOUX CITY  
 W 85 FT LOT 12 BLK 3  
 9

(Note: Not to be used on legal documents)

Date created: 11/4/2015  
 Last Data Upload: 11/3/2015 11:30:13 PM



**Resolution No.** \_\_\_\_\_

**Resolution Honoring Two Lifesaving Deputies**

**WHEREAS**, a 24-year-old woman who went missing was found nearly two days later lying in severe weather conditions in rural Woodbury County by two deputies in the county sheriff's office;

**WHEREAS**, these deputies, Deputy David Hansen and Lieutenant Tony Wingert, were able to locate the missing person in the snow and suffering from extreme exposure to the weather conditions;

**WHEREAS**, the individual was transported in Lieutenant Wingert's patrol vehicle to a waiting Merville ambulance where she was then taken to Mercy Medical Center;

**AND WHEREAS**, both Deputy Hansen and Lieutenant Wingert's actions show exemplary service as they are credited for saving this individual's life;

Now therefore be it resolved that the Woodbury County Board of Supervisors thanks, commends, and honors the service actions of Deputy Hansen and Lieutenant Wingert and wishes them the absolute best as they continue to show honor in their steadfast commitment to the citizens of Woodbury County.

**BE IT SO RESOLVED** this 19<sup>th</sup> day of January, 2016.

**WOODBURY COUNTY BOARD OF SUPERVISORS**

\_\_\_\_\_  
Jeremy J. Taylor, Chairman

\_\_\_\_\_  
Jaclyn D. Smith, Member

\_\_\_\_\_  
Larry D. Clausen, Member

\_\_\_\_\_  
Mark A. Monson, Member

\_\_\_\_\_  
Matthew A. Ung, Member

Attest:

\_\_\_\_\_  
Patrick F. Gill, Woodbury County Auditor



#9a

**WOODBURY COUNTY BOARD OF SUPERVISORS AGENDA ITEM(S)**

Date: January 21, 2016

Weekly Agenda Date: January 26, 2016

DEPARTMENT HEAD / CITIZEN: Mark J. Nahra P.E. Secondary Roads Dept Head

SUBJECT: **Receive and Consideration of award of bids for project number L-B(W153)—73-97.**

**ACTION REQUIRED:**

Approve Ordinance

Approve Resolution

Approve Motion

Give Direction

Other: Informational

Attachments

**Consideration**

**WORDING FOR AGENDA ITEM:** Receive and consider bids for project number L-B(W153)—73-97.

**EXECUTIVE SUMMARY:** This project was scheduled for replacement during FY 2016. The bridge was destroyed in the June 2014 flood event. The replacement bridge has been designed, construction permits have been secured from regulatory agencies, and the plans have been put out to contractors for bid.

**BACKGROUND:** This bridge is one of the replacement projects to be paid for by the special bridge levy, the \$1.3 million annual levy dedicated to completing 14 bridge projects and one grading/paving project. The destroyed structure was posted for legal truck loads prior to its loss in the flood and required area farmers to detour over 5 miles to reach fields off Morgan Trail. The bridge was awarded FEMA funding due to its loss in the flood. The FEMA funding will be used to match the local bridge levy. This helps the bridge special bridge levy as since construction costs have increased significantly since the levy was proposed in FY 2012 and the project let so far from the levy have exceeded the original estimated costs.

The replacement bridge is a 90' long, single span beam bridge. This structure eliminates bridge piers which can catch debris. We anticipate a September 30, 2016 completion for this project.

**FINANCIAL IMPACT:** This project is paid for by a combination of 75% FEMA, 10% state emergency management, and 15% special bridge fund money.

**RECOMMENDATION:** Recommend that we receive bids and allow engineer to review them and make an award recommendation.

**ACTION REQUIRED/MOTION PROPOSED:** Motion to receive the bids and direct the county engineer to evaluate the bids and return with a recommendation for award.

*Approved by Board of Supervisors March 3, 2015.*

#96

**WOODBURY COUNTY BOARD OF SUPERVISORS AGENDA ITEM(S) REQ**

Date: November 5, 2015

Weekly Agenda Date: November 10, 2015

DEPARTMENT HEAD / CITIZEN: Mark J. Nahra, P.E., Woodbury County Engineer, Secondary Road Dept.

SUBJECT: **Consideration of Approval a resolution to revise a project to the Woodbury County Secondary Road FY 2016 to FY 2020 Construction Program**

**ACTION REQUIRED:**

Approve Ordinance

Approve Resolution

Approve Motion

Give Direction

Other: Informational

Attachments

**Consideration**

**WORDING FOR AGENDA ITEM:** Consideration of a Resolution to Revise the Secondary Road FY 2016 to FY 2020 Construction Program.

**EXECUTIVE SUMMARY:** Woodbury County is receiving Federal Highway Administration Emergency Relief (ER) funding for a project to repair damaged road embankments following the 2014 disaster declaration. This project was approved for funding and added after the approval of the 5 year construction program in April. The project description has to be revised prior to letting.

**CKGROUND:** The Iowa DOT and the Iowa County Engineers Association have developed a process to add projects to the construction program in similar unforeseen circumstances by resolution. The resolution to add this project is attached. Unfortunately the resolution we previously approved for this project in November had the project description truncated and the approved description missed two restoration project on county road D50. These needed to be specifically shown in the description for FHWA to agree to funding the project. The revised description adds these two projects to the description.

**FINANCIAL IMPACT:** The added project is funded 80% by ER funds from the Iowa Department of Transportation and 20% Farm to Market funds. The total project cost is estimated to be approximately \$133,000.

**RECOMMENDATION:** Recommend approval of the resolution to add a project to the Five Year Construction Program.

**ACTION REQUIRED/PROPOSED MOTION:** Motion to approve the resolution to add the ER road embankment repair project to the FY 2016 Construction Program.

*Approved by Board of Supervisors March 3, 2015.*

**Resolution to Revise Woodbury County  
2016 Five Year Road Program**

**Resolution No. 0.3**

Unforeseen circumstances have arisen since adoption of the approved Secondary Road Construction Program, and previous revisions, requiring changes to the sequence, funding and timing of the proposed work plan,

The Board of Supervisors of Woodbury County, Iowa, in accordance with Iowa Code section 309.22, initiates and recommends modification of the following project(s) in the accomplishment year (State Fiscal Year 2016), for approval by the Iowa Department of Transportation (Iowa DOT), per Iowa Code 309.23 and Iowa DOT Instructional Memorandum 2.050.

The following PRE-EXISTING Accomplishment Year projects shall be MODIFIED as follows:

Project Number Local ID TPMS #	Project Location Description of work	AADT Length NBIS #	Type Work Fund basis	Modification(s) applied	Accomplishment Year (\$1000's of dollars)		
					Previous Amount	New amount	Net change
ER-C097(125)--58-97 ER Roadside Repairs TPMS ID: 34323	On D38-7 sites between K64 & Hwy 31 and on D50-2 sites between Hwy 31 and L27 southbound Repair road slides along county federal aid routes	220	Miscellaneous  ER	Changed Scope Changed location attributes	\$133	\$133	\$0
<b>Totals</b>					\$133	\$133	\$0
Fund ID	Accomplishment year (\$1000's of dollars)			Net Change			
	Previous Amount	New Amount	Net Change				
Local Funds	\$3,033	\$3,033	\$0				
Farm to Market Funds	\$1,367	\$1,367	\$0				
Special Funds	\$4,343	\$4,343	\$0				
Federal Aid Funds	\$1,666	\$1,666	\$0				
Total construction cost (All funds)	\$10,409	\$10,409	\$0				
Local 020 Construction cost totals (Local Funds + BROS-8J FA funds)	\$3,033	\$3,033	\$0				

**Recommended:**

\_\_\_\_\_  
Date

\_\_\_\_\_  
County Engineer

**Approved:**

\_\_\_\_\_  
Date

\_\_\_\_\_  
Chair Board of Supervisors

**Attested:**

I, \_\_\_\_\_, Auditor in and for Woodbury County, Iowa, do hereby certify the above and foregoing to be a true and exact copy of a resolution passed and approved by the Board of Supervisors of Woodbury County, Iowa, at its meeting held on the \_\_\_\_ day of \_\_\_\_\_, \_\_\_\_\_

\_\_\_\_\_  
County Auditor

#10a

Tax Rates Include All Improvement Requests

<u>Fund</u>	<u>FY 2016 Current Tax Rates</u>	<u>Worst Case Senerio Tax Rates for FY 2017</u>	<u>After 12-22-15 Adjustments</u>	<u>After 1-4-16 Adjustments</u>	<u>After 1-12-16 Adjustments</u>	<u>After 1-19-16 Adjustments</u>	<u>After 1-26-16 Adjustments</u>	<u>After 2-2-16 Adjustments</u>
General Basic	3.50000	3.81946	3.76337	3.76337	3.74769	3.70670		
General Supplemental	2.82458	2.97915	2.97915	2.92650	2.92134	2.92032		
County Services	0.97917	0.72746	0.72746	0.72746	0.72746	0.72746		
Debt Service	0.21239	0.26708	0.26708	0.26708	0.26708	0.26708		
<b>Total County - Wide Tax Rate</b>	<b>7.51614</b>	<b>7.79315</b>	<b>7.73706</b>	<b>7.68441</b>	<b>7.66357</b>	<b>7.62156</b>	<b>0.00000</b>	<b>0.00000</b>
Rural Basic	3.12277	3.64728	3.48231	3.48231	3.10081	3.10081		
<b>Total Township Tax Rate</b>	<b>10.63891</b>	<b>11.44043</b>	<b>11.21937</b>	<b>11.16672</b>	<b>10.76438</b>	<b>10.72237</b>	<b>0.00000</b>	<b>0.00000</b>

Taxable Valuations:

Rural (Townships)	1,068,524,464
Urban (Cities)	2,851,812,073
Total for County	3,920,336,537
Debt Service	4,302,351,792

Conservation Technician  
Position Description  
Amended January 2016

#10d

**Introduction**

This position exists within the framework of the Woodbury County Secondary Roads Department, under the supervision of the County Engineer. The position, by direction of the County Board of Supervisors, is assigned to the Woodbury County Soil and Water Conservation District (SWCD) under the daily supervision of the District Conservationist with the USDA Natural Resources Conservation Service (NRCS).

The purpose of the position is to assist the Woodbury County Soil and Water Conservation District in the promotion, establishment, inspection and maintenance of watershed projects.

The incumbent will perform professional duties to achieve and maintain an integrated system of sound land use practices including watershed structures within authorized watershed areas.

**Major Duties**

1. Responsible for planning and applying soil, water, and related conservation practices at the field office level in watershed development.

- A. Prepare landright documents for structure and wildlife mitigation sites.
  - 1. Define legal description
  - 2. Request title searches on involved parcels of land.
  - 3. Prepare easement forms and subordination agreements for signature, explain paperwork to landowner, and obtain signatures.
  - 4. Notarize and record necessary documents.
  - 5. Work with Iowa Attorney General's office to obtain a legal opinion on each easement and subordination agreement.
  
- B. Work with Watershed Committees
  - 1. Compile landowner information including ownership, mailing address and acreage within the watershed.
  - 2. Conduct informational meetings to keep members informed of progress and needs in order to advance their watershed project.
  - 3. Assist in developing maintenance fund program and records, explaining needs and collecting maintenance fund money.
  - 4. Assist in holding annual meetings for active watersheds.
  - 5. Works with watershed landowners to secure necessary wildlife mitigation areas.
  
- C. Works with NRCS and sponsors on each structure site in conducting:
  - 1. On site review.
  - 2. Contractor pre-bidder tour or site showing.
  - 3. Contractor/landowner meeting.
  - 4. Final review before accepting the structure.

2. Performs annual and emergency watershed inspections and performs maintenance as needed.

- A. Inspects 460 structures annually.
- B. Removes trees and brush from structure berms.
- C. Removes debris from trash racks and spillways.
- D. Consults with County Engineer about problems with County road structures.
- E. Consults with NRCS at the field office, area office, and state office on problems with privately owned structures.
- F. Performs or contracts for necessary repairs.
- G. Supervises repairs, makes final inspections, certifies bills as correct to the Soil and Water Conservation District or to the Secondary Roads Department.
- H. Records annual maintenance inspections information and files necessary reports, including an annual report summarizing condition of watershed structures and repairs needed. Must be proficient in MicroSoft Office programs such as Word, Excel, Access and Powerpoint
- I. Maintains district owned equipment in workman-like condition.
- J. Keeps accurate records and reports relative to time worked, work performed, and miles driven.

3. Local Contracting Officer

- A. Work with NRCS to set bid dates for new construction.
- B. Distribute specifications and plans to prospective bidders.
- C. Conduct bid opening, notify apparent low bidder, draw-up abstract of all bids, mail all copies to NRCS state office in Des Moines.
- D. Handle all correspondence for contract signing, bond approval and "Notice to Proceed"
- E. Oversee construction, help with solutions to unforeseen problems, be go-between for NRCS, Conservation District, landowner, and contractor. Handle "suspend and resume work orders".
- F. Attend construction safety meeting and reviews.
- G. Represent local sponsors to ensure work is completed in the sponsors' best interest.
- H. Work with NRCS area office staff to prepare contractors' pay vouchers. Verify invoices of items in progress during construction.

4. Acquire Easements and Permits for Woodbury County Grade Stabilization Projects

- A. Work with County personnel on site location, identify landowners and project type
- B. Identify legal description and prepare easements
- C. Explain program and easements to landowners for signature
- D. Notarize and complete easements
- E. Keep County Engineer's office aware of potential problems regarding projects.

5. Process all Slough Bill applications for Woodbury County – Not Applicable At This Time

- A. Explain program and assist with the completion of necessary forms.
- B. Inspect property to determine eligibility.
- C. Develop joint program with the County Assessor.
- D. Review applications and notify landowners of the need to renew exemptions.

6. Process Impoundment Exemption Applications for Woodbury County

- A. Explain program and requirements and assist clients with the completion of necessary forms.
- B. Evaluate construction plans for structure and pond size.
- C. Research records for Water Storage Permits.
- D. Determine eligibility and submit to Soil and Water Conservation District board for final approval.
- E. Work with County Assessor on processing requests.

7. Public Relations

- A. Contact landowners when on their property doing watershed inspection to keep them informed of structure condition and maintenance needs .
- B. Conduct tours of watershed construction and watershed repair needs for Soil and Water Conservation District Commissioners; NRCS field office, area office, state office, and IDALS-DSC, and etc.
- C. Attends meetings of the soil and water conservation district governing body and presents concise reports.
- D. Participates in the information and education program of the soil and water conservation district.

8. Perform other related duties as assigned and directed by the Woodbury County SWCD and/or Woodbury County Engineer.

**Knowledge Required by the Position**

- 1. Knowledge and skill sufficient to communicate soil and water conservation methods, watershed land rights requirements and obligations, and watershed structure maintenance and repair procedures to watershed groups, individual landowners and contractors.
- 2. Knowledge of possible watershed structure deficiencies or problems to ensure a quality watershed structure inspection process.
- 3. Knowledge of construction procedures and materials to direct proper new construction or repair of earth or concrete structures.
- 4. Knowledge of commercial fertilizer and grass varieties to enable the establishment of proper vegetative cover after repairs are completed.
- 5. Ability to research and write legal descriptions, prepare easements, and subordination agreements.
- 6. Ability to work with uncooperative landowners and contractors.

### **Supervision**

The incumbent is under the supervision of the NRCS District Conservationist. The Woodbury County SWCD will establish the general guidelines with the approval of the County Engineer. The incumbent makes independent decisions on routine assignments.

### **Personal Contacts**

Personal contacts are with individual landowners, groups, County Board of Supervisors, USDA Natural Resources Conservation Service, Iowa Department of Ag and Land Stewardship/Division of Soil Conservation, Iowa Attorney General, Woodbury County Extension Service, Woodbury County Assessor, Woodbury County Engineer, and Woodbury County Conservation Board.



2016 28E Agreement Proposal  
 Between the Woodbury County Board of Supervisors  
 & the Woodbury County Soil & Water Conservation District

The Woodbury County Soil & Water Conservation District would like to hire a part time employee to help with the watershed inspections for various reasons. Liability is one of our main concerns. Many of our watersheds are located on back roads or in the middle of a farm and may be need to be accessed either via ATV or foot, crossing fences or walking creek bank or edges of crop fields. As part of the watershed responsibilities also include unplugging watershed structures or cutting small trees. I think that you would agree that there should be two people present for safety reasons when doing this.

The main reason for hiring a part time employee is that the individual would be training for the full time position should our full time watershed inspector decide to retire in the next year or two.

Proposed Budget

Current Employee

Description	Hours	Rate	Total
Total Hours Per Year	1664	\$17.30	\$28,787.20
Sick Leave	56	\$17.30	\$ 968.80
Vacation	156	\$17.30	\$ 2,698.80
Holiday	80	\$17.30	\$ 1,384.00
Insurance Reimbursement Per Pay Period		\$95.86	\$ 2,492.36
IPERS – Employer Share (8.93%)			\$ 3,021.80
Total Annual Expenses for Current Employee			\$39,352.96

Part Time Employee

Description	Hours	Rate	Total
Total Hours Per Year	1248	\$14.00	\$17,472.00
IPERS – Employer Share (8.93%)			\$ 1,560.25
Total Annual Expenses for Current Employee			\$19,032.25

NRCS – In Kind Contributions

Description	Amount
Office Space	\$ 4,500.00
Computer & Maintenance	\$ 4,000.00
Vehicle – 12,000 Miles @ \$0.38/mile	\$ 4,560.00
Supplies	\$ 300.00
Total Annual In Kind Contributions	\$13,360.00

This totals to \$71,745.21 for both employees. NRCS portion is \$13,360.00. But is trying to cut their contribution. Employee has not had a pay increase since 2012.

#11a

WOODBURY COUNTY BOARD OF SUPERVISORS AGENDA ITEM(S) REQ

Date: 1-21-16

Weekly Agenda Date: 1-26-16

DEPARTMENT HEAD / CITIZEN: <u>Ed Gilliland</u>		
SUBJECT: <u>Memorandum of Personnel Transactions</u>		
<b>ACTION REQUIRED:</b>		
Approve Ordinance <input type="checkbox"/>	Approve Resolution <input type="checkbox"/>	Approve Motion <input checked="" type="checkbox"/>
Give Direction <input type="checkbox"/>	Other: Informational <input type="checkbox"/>	Attachments <input checked="" type="checkbox"/>

**WORDING FOR AGENDA ITEM:** Approval of Memorandum of Personnel Transactions

**EXECUTIVE SUMMARY:**

**BACKGROUND:**

**FINANCIAL IMPACT:**

**RECOMMENDATION:**

**ACTION REQUIRED/PROPOSED MOTION:** Motion to Approve the Memorandum of Personnel Transactions

# HUMAN RESOURCES DEPARTMENT

## MEMORANDUM OF PERSONNEL TRANSACTIONS

**DATE:** January 26, 2016

**\* PERSONNEL ACTION CODE:**

A - Appointment	R - Reclassification
T - Transfer	E - End of Probation
P - Promotion	S - Separation
D - Demotion	O - Other

**TO: WOODBURY COUNTY BOARD OF SUPERVISORS**

NAME	DEPARTMENT	EFFECTIVE DATE	JOB TITLE	SALARY REQUESTED	% INCREASE	*	REMARKS
Jensen, Alexander	County Sheriff	1-29-16	Civilian Jailer	\$17.48/hour		A	Job Vacancy Posted 12-9-15. Entry Level Salary: \$17.48/hour.
Verdin, Anabel	Juvenile Detention	2-06-16	Youth Worker	\$23.29/hour	5%=\$1.24/hr.	R	Per AFSCME Juvenile Detention Contract agreement, from Grade 1/Step 4 to Grade 1/Step 5.
Washington, Christina	County Sheriff	2-15-16	Civilian Jailer	\$17.48/hour		A	Job Vacancy Posted 12-9-15. Entry Level Salary: \$17.48/hour.

APPROVED BY BOARD DATE:

ED GILLILAND, HR DIRECTOR:



**WOODBURY COUNTY**  
**HUMAN RESOURCES DEPARTMENT**

**TO:** Board of Supervisors and the Taxpayers of Woodbury County

**FROM:** Ed Gilliland, Human Resources Director



**SUBJECT:** Memorandum of Personnel Transactions

**DATE:** January 26, 2016

For the January 26, 2016 meeting of the Board of Supervisors and the Taxpayers of Woodbury County the Memorandum of Personnel Transactions will include:

- 1) County Sheriff Civilian Jailer, Appointment.
- 2) Juvenile Detention Youth Worker, from Grade 1/Step 4 to Grade 1/Step 5.
- 3) County Sheriff Civilian Jailer, Appointment.

Thank you

# 11b

**WOODBURY COUNTY BOARD OF SUPERVISORS AGENDA ITEM(S) REQUEST**

Date: 1-21-16

Weekly Agenda Date: 1-26-16

DEPARTMENT HEAD / CITIZEN: Ed Gilliland

SUBJECT: AFSCME Juvenile Detention Ratified Agreement for Approval

**ACTION REQUIRED:**

Approve Ordinance <input type="checkbox"/>	Approve Resolution <input type="checkbox"/>	Approve Motion <input checked="" type="checkbox"/>
Give Direction <input type="checkbox"/>	Other: Informational <input type="checkbox"/>	Attachments <input type="checkbox"/>

**WORDING FOR AGENDA ITEM:** AFSCME Juvenile Detention Ratified Agreement for Approval, Discussion and Action.

**EXECUTIVE SUMMARY:**

**BACKGROUND:**

**FINANCIAL IMPACT:**

**RECOMMENDATION:**

**ACTION REQUIRED/PROPOSED MOTION:** Motion to approve AFSCME Juvenile Detention Ratified Agreement.

*Approved by Board of Supervisors March 3, 2015.*

#11c

WOODBURY COUNTY BOARD OF SUPERVISORS AGENDA ITEM(S) RE

Date: 1-21-16

Weekly Agenda Date: 1-26-16

DEPARTMENT HEAD / CITIZEN: <u>Ed Gilliland</u>		
SUBJECT: <u>AFSCME Courthouse Ratified Agreement for Approval</u>		
<b>ACTION REQUIRED:</b>		
Approve Ordinance <input type="checkbox"/>	Approve Resolution <input type="checkbox"/>	Approve Motion <input checked="" type="checkbox"/>
Give Direction <input type="checkbox"/>	Other: Informational <input type="checkbox"/>	Attachments <input type="checkbox"/>

**WORDING FOR AGENDA ITEM:** AFSCME Courthouse Ratified Agreement for Approval, Discussion and Action.

**EXECUTIVE SUMMARY:**

**BACKGROUND:**

**FINANCIAL IMPACT:**

**RECOMMENDATION:**

**ACTION REQUIRED/PROPOSED MOTION:** Motion to approve AFSCME Courthouse Ratified Agreement.

*Approved by Board of Supervisors March 3, 2015.*

#11d

**WOODBURY COUNTY BOARD OF SUPERVISORS AGENDA ITEM(S) REQUEST**

Date: 1-21-16

Weekly Agenda Date: 1-26-16

DEPARTMENT HEAD / CITIZEN: <u>Ed Gilliland</u>		
SUBJECT: <u>AFSCME Assistant County Attorney Ratified Agreement for Approval</u>		
<b>ACTION REQUIRED:</b>		
Approve Ordinance <input type="checkbox"/>	Approve Resolution <input type="checkbox"/>	Approve Motion <input checked="" type="checkbox"/>
Give Direction <input type="checkbox"/>	Other: Informational <input type="checkbox"/>	Attachments <input type="checkbox"/>

**WORDING FOR AGENDA ITEM:** AFSCME Assistant County Attorney Ratified Agreement for Approval, Discussion and Action.

**EXECUTIVE SUMMARY:**

**BACKGROUND:**

**FINANCIAL IMPACT:**

**RECOMMENDATION:**

**ACTION REQUIRED/PROPOSED MOTION:** Motion to approve AFSCME Assistant County Attorney Ratified Agreement.

*Approved by Board of Supervisors March 3, 2015.*

#12

**WOODBURY COUNTY BOARD OF SUPERVISORS AGENDA ITEM(S) RE**

Date: 1/19/2016

Weekly Agenda Date: 1/26/2016

ELECTED OFFICIAL / DEPARTMENT HEAD / CITIZEN: Patrick Gill

SUBJECT:

Bylaws

**ACTION REQUIRED:**

Approve Ordinance

Approve Resolution

Approve Motion

Give Direction

Other: Informational

Attachments

**WORDING FOR AGENDA ITEM:** Amend and Adopt Bylaws of The Woodbury County Board of Supervisors

**EXECUTIVE SUMMARY:** The Board amended their bylaws on Jan12. This action is required to adopt them as amended.

**BACKGROUND:** Supervisor sought to adopt the Board's Bylaws.

**FINANCIAL IMPACT:** None.

**RECOMMENDATION:** Adopt the bylaws as submitted.

**ACTION REQUIRED / PROPOSED MOTION:** Move to amend and adopt the Bylaws of The Woodbury County Board of Supervisors as submitted.

*Approved by Board of Supervisors March 3, 2015. Revised May 5, 2015.*



**BYLAWS  
OF  
THE WOODBURY COUNTY BOARD OF SUPERVISORS**

**ARTICLE I  
Name**

The name of this statutorily created assembly is the Woodbury County Board of Supervisors.

**ARTICLE II  
Purpose**

The purpose of this assembly is to perform the duties of the Board of Supervisors according to the Iowa Code.

**ARTICLE III  
Members**

There are five members of the Woodbury County Board of Supervisors. They are elected at large from Woodbury County, Iowa but with equal-population district residence requirements.

**ARTICLE IV  
Officers**

**Section 1. Officers and Duties.** The officers shall be a Chairperson, a Vice Chairperson and a Clerk to the Board. These officers shall perform the duties as prescribed by Iowa Code, these bylaws and by the parliamentary authority adopted by the Board in descending order.

- a. **Chairperson.** The Chairperson shall preside at all the meetings of the Board during the year. The Chairperson shall make all committee assignments to committees recognized in these bylaws. The Chairperson shall set the tentative agenda for all meetings of the Board. The Chairperson shall oversee the daily operations of county administration while acting within the policies established by the Board. Subject to approval of the Board, the Chairperson shall be authorized, with a Board approved committee form, to establish special purpose committees as needed.
- b. **Vice Chairperson.** The Vice Chairperson shall serve during the absence of the Chairperson and be the presiding officer when the Chairperson participates by electronic means.
- c. **Clerk to the Board.** The Auditor and Recorder or the designee of the Auditor and Recorder shall serve as Clerk to the Board *ex officio*. The Clerk to the Board shall be recognized as the parliamentarian for all meetings of the Board.

**Section 2. Time, Nomination Procedure, Method of Election and Term of Office.** The election of The Chairperson and Vice Chairperson shall occur at the first meeting in each year. Nominations shall be made from the floor and elections shall be by roll call vote. A temporary chair shall be elected to preside over the election of the Chairperson. The Chairperson's term shall begin immediately. The Chairperson shall preside over the election of the Vice Chairperson.

## **ARTICLE V Meetings**

**Section 1. Compliance with Open Meetings Law.** All meetings of the Board shall be scheduled and conducted in compliance with Chapter 21 of the Code of Iowa and other applicable law.

**Section 2. First Meeting.** The Board shall meet on the first day of January which is not a Saturday, Sunday or holiday.

**Section 3. Regular Meetings.** The Board shall hold regular meetings on each Tuesday of the year unless canceled or postponed by a majority of the Board.

**Section 4. Special Meetings.** The Board may hold special meetings from time to time as required to conduct the business of the county. A special meeting may be called by the Chairperson or by the Vice Chairperson in the absence of the Chairperson.

**Section 5. Agenda.** Items to be considered for a meeting shall be submitted in a format prescribed by the Board. All items requested for Board action shall be submitted in the form of a proposed written motion. Any member of the Board may direct the Chairperson to place an information or discussion item on the agenda of a subsequent meeting. The Chairperson shall place an action item on the agenda of a subsequent meeting when directed by a majority of the Board.

**Section 6. Quorum and Consensus.** A quorum and consensus shall consist of three members of the Board. A quorum is required to transact the official business of the County.

**Section 7. Majority Required.** Unless where otherwise provided by law, a majority of the quorum present is required for the adoption of any matter to come before the Board.

**Section 8. Manner of Acting.** Any question to come before the Board shall be in the form of a motion made by a member and shall require a second for consideration. Remarks by members shall be limited to ten minutes unless an extension is granted by a majority of the Board. A member or any other elected official of the county shall address the Chairperson and confine their remarks to the question before the Board and shall be respectful of other elected officials and avoid referencing or questioning the motives of another elected official.

**Section 9. Roll Call Votes.** The Chairperson shall order a roll call vote when requested by a member. The roll shall be called alphabetically except the Chairperson shall be called last. If a member is not ready to vote, the member may pass and shall be called upon again after the roll has been completely called and shall vote or abstain.

**Section 10. Effect of Abstention.** When a member abstains due to a conflict of interest, the vote of the Board shall be computed on the basis of the number of members not disqualified by reason of conflict of interest. However, at least three (3) members eligible to vote are required for a quorum on any matter. Abstentions that are not due to a conflict of interest shall be counted as a "no" vote.

**Section 11. Electronic Participation.** A member of the Board may participate in a meeting by electronic means only in circumstances where participation in person is impossible or impractical. Any member participating electronically shall be connected by a speaker phone, video conference, or other device or software, so that the public can hear any discussion by that member. The vote of any member participating electronically must be made public at the meeting and the minutes of the meeting shall include sufficient information to indicate the vote of each member participating.

## **ARTICLE VI Committees**

**Section 1. Committees Required by Iowa Code.** All Board representation on committees required by the Iowa Code shall be appointed by the Chairperson subject to approval of the Board.

**Section 2. Committees Created by the provisions of Iowa Code Chapter 28E.** All Board representation on committees required by 28E agreements shall be appointed by the Chairperson subject to approval of the Board and the requirements of the 28E agreement.

**Section 3. Committees Created by Agreement.** All Board representation on committees required by agreement shall be appointed by the Chairperson subject to approval of the Board.

**Section 4. Committees Created for Special Purpose.** All Board representation on committees required for a special purpose shall be appointed by the Chairperson subject to approval of the Board.

## **ARTICLE VII Conflicts of Interest**

Except as otherwise provided by law, members shall not have an interest, direct or indirect, in any contract, or job of work, or material, or the profits thereof, or services to be furnished or performed for Woodbury County. Members should avoid any action that would result in, or create the impression of, using public office for private gain, giving preferential treatment to any person, or losing impartiality in conducting county business.

**ARTICLE VIII**  
**Parliamentary Authority**

The rules contained in the most current edition of Robert's Rules of Order Newly Revised shall govern the Board in all cases to which they are applicable and in which they are not inconsistent with the Iowa Code, these bylaws and any special rules of order that the Board may adopt.

**ARTICLE IX**  
**Bylaws**

**Section 1. Adoption of Bylaws.** Bylaws shall be adopted at the first meeting in each year following a General Election.

**Section 2. Amendment of Bylaws.** These bylaws may be amended at any regular meeting of the Board with a majority vote, provided that the amendment has been submitted in writing at the previous regular meeting.

\_\_\_\_\_  
**DATE AMENDED AND ADOPTED**

\_\_\_\_\_  
**CHAIRPERSON**

\_\_\_\_\_  
**ATTESTOR**

#13

**WOODBURY COUNTY BOARD OF SUPERVISORS AGENDA ITEM(S) REC**

Date: January 22, 2015

Weekly Agenda Date: January 26, 2015

DEPARTMENT HEAD / CITIZEN: Supervisor Jeremy Taylor

SUBJECT: **Designation of Substitute for LEC Expansion Committee from TRC**

**ACTION REQUIRED:**

Approve Ordinance                       Approve Resolution                       Approve Motion

Give Direction                       Other: Informational                       Attachments

**WORDING FOR AGENDA ITEM:** LEC Expansion Committee Substitution for RFQ Process

**EXECUTIVE SUMMARY:** The Board approved a committee for the Prairie Hills / LEC Expansion that will interview 3 potential architects on February 3 and make a recommendation back to the Board. The Taxpayers Research Council is asking that Roger Caudron take the place of Jim Johnson for this meeting only as Jim Johnson is unable to attend.

**BACKGROUND:** Supervisor Ung brought forward a committee proposal to codify who is and who is not on a committee, which was good policy to guide the Board. This solidifies who is and who is not on a special purpose committee. It is within the spirit of transparency and under advisement of the Assistant County Attorney that if it is the will of the Board of Supervisors to grant the substitution, that we do so under formal action.

**FINANCIAL IMPACT:** None

**RECOMMENDATION:** Approve the "Action Required."

**ACTION REQUIRED:** Motion to approve the temporary substitution of Roger Caudron for Jim Johnson for the purpose of representing the Taxpayers Research Council on February 3 interview related to the RFQ.



OFFICE OF  
**Woodbury County Planning & Zoning Director**

620 DOUGLAS ST., 6TH FLOOR - SIOUX CITY, IA 51101

John Pylelo - Planning & Zoning Director • jpylelo@sioux-city.org

Peggy Napier - Clerk II • pnapier@sioux-city.org

Telephone (712) 279-6557

Fax (712) 279-6530

JAN 21 2016 AM 11:01

**DATE:** January 18, 2016

**TO:** Casey Lee - Clerk Woodbury Township  
Sheri Bentley - Clerk Sergeant Bluff  
Kay Ping, Clerk - Farmers Drainage Ditch Clerk  
Att. Stan Munger - Farmers Drainage Ditch  
Mark Nahra P.E. - Woodbury County Engineer  
Michelle Skaff - Woodbury County Emergency Management  
Gary Brown - Woodbury County Emergency Services  
Sheriff David Drew - Woodbury County, Iowa  
Dean Herbst - Iowa Department of Transportation  
Natural Resources Conservation Service  
Karen James - Woodbury County Board of Supervisors Office  
Siouxland Interstate Metropolitan Planning Council  
Tom Roos - Iowa Department of Natural Resources  
Aaron Lincoln - City Administrator Sergeant Bluff  
Mark Huntley - Public Works Director Sergeant Bluff  
John Moline - Iowa Motor Vehicle Enforcement  
Iowa Department of Natural Resources  
FAA- Attn: Doug Johnson

**FROM:** John Pylelo, Director of Planning and Zoning

**RE:** Public Hearing of February 1, 2015 Re: A Conditional Use Permit application by Alexson, LLC for a borrow pit within E ½, SE ¼, Section 28, Woodbury Township, Woodbury County, Iowa; GIS Parcel # 8847 28 400 002.

This notice is to advise you that on December 31, 2015 Alexson, LLC submitted a Conditional Use Permit (CUP) application with this office..

Property owner Alexson, LLC wishes to stage and operate a borrow pit within portions of a rural Woodbury County parcel. The 57.74 acre parcel is zoned AP (Agricultural Preservation) which requires the applied for use be approved and permitted by the Woodbury County Board of Adjustment.

The location of the proposed borrow pit lies within the E ½, SE ¼, Section 28, Woodbury Township. The parcel is located on the north side of hard surfaced 210<sup>th</sup> St approximately 0.75 miles east of Sergeant Bluff and ½ mile west of the intersection of 210<sup>th</sup> St. graveled with Elk Creek Rd.

The application provides for the removal of up to 102,000 cubic yards of earthen material associated with the development of two (2) retention ponds. The application states the borrow removal is required to improve parcel drainage and to provide adequate drainage for potential residential development.

The decommissioning of borrow operations is currently unknown as borrow removal is based up unknown demand. The application provides no haul route information. However, hard surface intersections along 210<sup>th</sup> St. are located to the east at Hwy 141 and to the west at Old Lakeport Rd., Hwy 75, Port Neal Rd., and I29.

You will find enclosed:

- A copy of the Conditional Use Permit application
- Site Plan
- Parcel Aerial

You are being informed of this meeting and hearing should you wish to make formal comment to the Board of Adjustment on the impact of the applied for use upon public right-of-way, public infrastructure, water sources, drainage, public services, public safety, private property or to make any other comment.

**The Woodbury County Board of Adjustment's public hearing on this matter is scheduled at the Board's 6:00 PM meeting on Monday, February 1, 2016. The meeting and hearing will be held on the 1<sup>st</sup> floor of the Woodbury County Courthouse, 620 Douglas Street, Downtown Sioux City, Iowa. If attending use the 7<sup>th</sup> St. entrance to the Courthouse. Be advised security procedures are now in place when entering the Courthouse.**

You can provide public testimony regarding this matter by attending the public hearing or by forwarding your written comments by mail, e-mail or fax to: The Office of Planning and Zoning, 6th Floor, Woodbury County Courthouse, 620 Douglas St., Sioux City, IA 51101 Fax 712/279-6530. Only signed comments will be considered. Please provide your written comments so they are received no later than 10:00 AM Friday, December 4, 2015. E-mails may be sent to John Pylelo at:

[jpylelo@woodburycountyiowa.gov](mailto:jpylelo@woodburycountyiowa.gov)



# CONDITIONAL USE PERMIT APPLICATION

<b>Owner Information:</b>	<b>Applicant Information:</b>
Owner <u>Alexson LLC</u>	Applicant <u>K &amp; L Construction, Inc.</u>
Address <u>501 S Ridge Rd</u>	Address <u>501 S Ridge Rd</u>
<u>Sergeant Bluff, IA 51054</u>	<u>Sergeant Bluff, IA 51054</u>
Phone <u>712-943-2939</u>	Phone <u>712-943-2939</u>

We, the undersigned, hereby apply to the Woodbury County Board of Adjustment for permission to:

Establish a borrow pit to remove earthen material

### Property Information:

Property Address  
or Address Range Entrance to property is 210<sup>th</sup> Street, just east of 1489 210<sup>th</sup>

Quarter/Quarter \_\_\_\_\_ Sec 28 Twshp/Range 88/47

Parcel ID # 884728400002 GIS # \_\_\_\_\_ Total Acres 57.50

Current Use farmland Proposed Use farmland / borrow pit

Current Zoning AP

The filing of this application is required to be accompanied with all items and information required pursuant to section 2.02(9)(C)(2) through (C)(4) of Woodbury County's zoning ordinances (see attached pages of this application for a list of those items and information).

A formal pre-application meeting is recommended prior to submitting this application.

Pre-app mtg. date \_\_\_\_\_ Staff present \_\_\_\_\_

The undersigned is/are the owners(s) of the described property on this application, located in the unincorporated area of Woodbury County, Iowa, assuring that the information provided herein is true and correct. I hereby give my consent for the Woodbury County Planning and Zoning Office and Board of Adjustment members to conduct a site visit and photograph the subject property.

This Conditional Use Permit Application is subject to and shall be required, as a condition of final approval, to comply with all applicable Woodbury County ordinances, policies, requirements and standards that are in effect at the time of final approval.

Owner Jenna Wilson Applicant J. Wilson

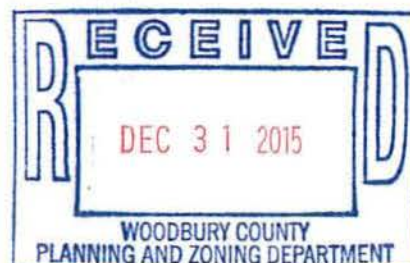
Date 12/31/15 Date 12/31/15

Fee: **\$250** Case #: \_\_\_\_\_

Check #: \_\_\_\_\_

Receipt #: \_\_\_\_\_

Date Received





PER SECTION 2.02(9)(C)(2)(d) PROVIDE A SPECIFIC DESCRIPTION OF THE PROPOSED CONDITIONAL USE:

The proposed conditional use is to establish a borrow pit to remove earthen material to install two retention ponds.

The property owner wants to create two retention ponds on the parcel of land. The largest one will be to assist with drainage in the farmland. The smaller one will be to assist with drainage issues from future residential housing development. Due to the poor quality of the soil that will be excavated, the majority of it will have to be hauled off site. It is not suitable for farmland or for building pads. Because of this, a conditional use permit for a borrow pit is being applied for. The borrow pits will be excavated in a manner designed to be effective retention ponds. All final site drainage shall be designed, sloped, revegetated or treated by other measures to avoid erosion and standing or stagnant water in the areas surrounding the retention ponds.

1. Estimate of the quantities of earthen material to be moved: Small pond, 29,833 cubic yards. Large pond, 72,212.1 cubic yards. (see attachment 1, EarthWorks Report)
2. Stormwater Management Plan: A SWPPP Permit is in the process of being applied for.
3. Soil Erosion Control Plan: A Soil Erosion Control Plan has been developed and consists of staging and maintenance, winter shutdown, removal of temporary measures, measures necessary to control erosion, and dewatering methods. (see attachment 2, Erosion Control Implementation Plan)
4. Proposed method to minimize fugitive dust during and following operations: A combination of applying water and dust control chemical applications will be utilized to minimize fugitive dust.
5. Haul Route: A haul route cannot be determined due to the fact that the customers for the material are an unknown factor. The parcel is located on 210<sup>th</sup> Street. To the west the hard surface roads are Old Lakeport Rd and Old Highway 75. To the east is Old Highway 141. The route would be determined by the customer and where they are taking the material, or having it delivered. The majority of the route would be hard surface roads.
6. Traffic: The driveway for the property is wide enough to accommodate vehicles entering the site to minimize traffic waiting on the county road. A tracking station will be installed at the beginning of the project for on-site erosion and sediment control. This will minimize any sediment from leaving the site and being tracked onto the road. In addition, any excess mud or debris that enters the public road shall be removed within one-fourth (1/4) mile in both directions of the site entrance as necessary to keep the roadway clear and safe for vehicle passage.

7. Hours of Operation: The borrow pit operate between the hours of 7:00am and 7:00pm. The Contractor will make every attempt possible to only operate during daylight hours to increase the safety of the residents who live or travel on the haul route. The borrow site will operate Monday-Friday, with only limited activity on Saturday or Sunday as necessary.
8. Duration of Operation: No end date has been determined. The waste dirt will be sold according to demand. The Contractor cannot predict how long it will take to relocate the earthen material.

PER SECTION 2.02(9) (C )(2)(e) PROVIDE A MAP DRAWN TO SCALE, SHOWING THE SUBJECT PROPERTY, ALL STRUCTURES AND OTHER IMPROVEMENTS, WITH THE PROPOSED CONDITIONAL USE IDENTIFIED PER STRUCTURE OR IMPROVEMENT . PROVIDE BY ATTACHMENT.

See Attachment 3, True Engineering Plan  
See Attachment 4, Beacon

PER SECTION 2.02(9) (C )(2)(e) PROVIDE A STATEMENT IN RESPONSE TO EACH OF SIX BELOW CRITEREA AND STANDARDS FOR APPROVAL OF CONDITIONAL USES AS LISTED IN SECTION 2.02(9)F OF THE ORDINANCES.

(a)Provide a statement to why you feel the conditional use requested is authorized as a conditional use in the zoning district within which the property is located and that any specific conditions or standards described as part of that authorization have been or will be satisfied.

The current zoning is Agricultural Preservation. Borrow pits are allowed on AP as a conditional use. The purpose of the borrow pits are to extract material and create two retention ponds. The parcel is currently used as farmland. Retention ponds hold stormwater for longer periods of time and allow even the fine sediments to settle to the bottom of the pond, thus allowing for additional biological interactions that assist in improving water quality for nutrients.

The larger retention pond on the northern boundary will assist in decreasing erosion due to stormwater runoff and help improve drainage of the farmland surrounding it. The smaller retention pond on the southern end will be utilized to help with stormwater runoff from future housing development.

(b) Provide a statement to why the proposed use and development will be in harmony with the general purpose and intent of this ordinance and the goals, objectives and standards of the general plan.

The parcel of land is zoned as AP. It is currently used as farmland. The purpose of the project is not to dig a borrow pit, but to decrease the drainage issues on the parcel. According to the Woodbury County Zoning Ordinance adopted on 7/22/2008, the purpose of AP is to encourage the continued role of agriculture as the primary economic sector in the unincorporated areas of Woodbury County. By creating a retention pond, the drainage will not only be improved for the parcel of land, but it will be beneficial to the farmland surrounding the parcel.

The long term goal for the smaller retention pond is to develop the area surrounding it for additional housing. To reduce the chance of runoff leaving the property before, during and after the land is developed; a retention pond is the first step in the development process.

(c) Provide a statement to why the proposed use and development will not have a substantial or undue adverse effect upon adjacent property, the character of the neighborhood, traffic conditions, parking, utility facilities, and other factors affecting the public health, safety and general welfare.

The proposed use - a borrow pit to extract earthen materials to develop two retention ponds- will not have a substantial or undue adverse effect upon adjacent property, the character of the neighborhood, parking, utility facilities.

The proposed use will have an intermittent impact on traffic conditions due to the necessity of removing the extracted earthen material from the property. The extracted material will be either clay or sandy material, neither which is desirable as topsoil on farmland or suitable for use as a building pad. Due to that fact, the earthen material will be removed from the property and sold as demand for that type of material arises. Because the material will be extracted as demand dictates, the construction process will be spread out over time and the residents will only experience minor inconvenience from increased traffic from time to time above what they currently experience from normal traffic and farming practices.

(d) Provide a statement to why the proposed use and development will be located, designed, constructed and operated in such a manner that it will be compatible with the immediate neighborhood and will not interfere with the orderly use, development and improvement of surrounding property.

The borrow pit is a temporary measure necessary to create two retention ponds. Retention ponds are common on farmland to assist with drainage issues.

(e) Provide a statement to why essential public facilities and services will adequately serve the proposed use or development.

Not applicable to this proposed use.

f) Provide a statement to why the proposed use or development will not result in unnecessary adverse effects upon any significant natural, scenic or historic features of the subject property or adjacent properties.

The property owner is unaware of any significant natural, scenic or historic features of the subject property or adjacent properties. If anything of significant natural, scenic or historic should arise, the property owner will notify the proper officials and comply with appropriate protocol.

1. SPECIFIC DESCRIPTION OF THE PROPOSED CONDITIONAL USE.
2. MAPPING DRAWN TO SCALE SHOWING THE SUBJECT PROPERTY, ALL STRUCTURES AND OTHER IMPROVEMENTS WITH THE PROPOSED CONDITIONAL USE IDENTIFIED THEREON.
3. A STATEMENT IN RESPONSE TO THE CRITEREA AND STANDARDS FOR APPROVAL OF CONDITIONAL USE WITHIN SUBSECTION 2.02-9.F OF WOODBURY COUNTY ZONING ORDINANCES.
4. A CERTIFIED ABTRACTOR'S LISTING OF NAMES AND MAILING ADDRESSES OF ALL OWNERS OF REAL PROPERTY LYING WITHIN 500 FEET OF THE SUBJECT PROPERTY.
5. A FILING FEE OF \$250.00 PAYABLE TO THE WOODBURY COUNTY TREASURER

K & L Construction  
Attachment 1

Conditional Use Permit Application  
December 30, 2015

EarthWorks Elements, Sub-total Report  
Job Filename: 210th St  
Job Description: Untitled

Date: 12/29/15 Time: 01:02 PM

Perimeter 1: Small Retention Pond

Cut Area: 99504.0 FT2  
Fill Area: 320.0 FT2  
Work Area: 99916.0 FT2

Bank Cut: 29823.1 YD3  
Expanded Cut: 29823.1 YD3  
Bank Fill: 0.8 YD3  
Topsoil Stripped: 0.0 YD3  
Topsoil Replaced: 0.0 YD3

Export: 29822.3 YD3

EarthWorks Elements, Sub-total Report  
Job Filename: 210th St  
Job Description: Untitled

Date: 12/29/15 Time: 01:02 PM

Perimeter 2: Large Retention Pond

Cut Area: 222112.0 FT2  
Fill Area: 36.0 FT2  
Work Area: 222156.0 FT2

Bank Cut: 72712.1 YD3  
Expanded Cut: 72712.1 YD3  
Bank Fill: 0.0 YD3  
Topsoil Stripped: 0.0 YD3  
Topsoil Replaced: 0.0 YD3

Export: 72712.1 YD3

Owner: Alexson LLC

Location: 210<sup>th</sup> St, Sec 28, Twnshp/Range 88/47

Type of Work: Borrow Pit

Prime Contractor: K & L Construction, Inc

Contact Person: Kevin Alexander

Phone: 712-943-2939

Contact information for the Contractor responsible for installation & maintenance of erosion/sediment controls:

Name: Kevin Alexander

Company: K & L Construction, Inc

Address: 501 S Ridge Road , Sgt Bluff, IA

Phone: 712-943-2939

#### Project Description

The purpose of this project is to establish a borrow pit to remove earthen material and install two retention ponds

#### Site Description

The site is relatively flat farmland with a farmers drainage ditch running along the northern boundary. The parcel is surrounded by farmland on the west, north, and east. There is a residential house on the northeast corner and residential housing to the south. The current Woodbury County zoning is AP or Agriculture Preservation.

#### Soils

The soil is sandy and fatty clay. Neither type is desirable for topsoil on farmland. Neither type is acceptable as a material for a building pad.

Description of the intended schedule and sequence of major land disturbing and erosion/sediment control activities.

a. Staging and maintenance

A temporary construction entrance and tracking station will be installed before work begins. The tracking station will be placed where the vehicles enter 210<sup>th</sup> street and consist of loose big stones that will scrape mud off tires. Additional erosion control methods will be installed to protect the parcel and surrounding parcels from any erosion due to construction activities.

b. Winter shutdown

Stabilization will be done if more than 1 acre is disturbed.

c. Removal of temporary measures

All temporary measures will be removed at the end of the project after vegetation is established.

d. Measures necessary to control erosion based on schedule and sequence of operations

Silt fence, wattles, and soil stabilization as needed at the start of the job and as the job progresses and conditions require it. Any installed erosion control devices will be inspected and cleaned out after 1/2" of rainfall.

e. Are there areas where additional erosion control beyond that shown in plans is anticipated?

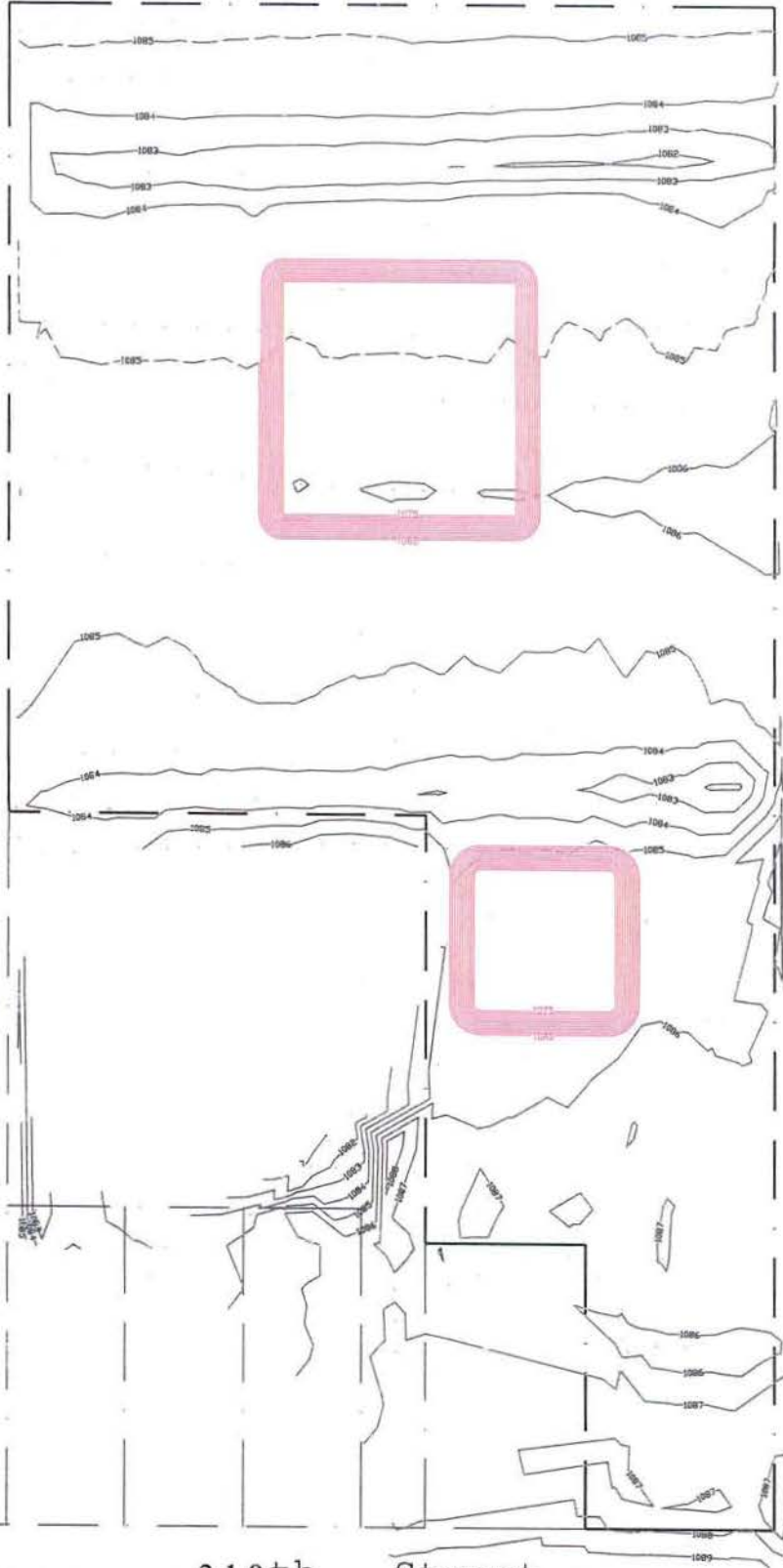
No

f. Describe dewatering methods and locations. What controls will be used at the outlet?

The Contractor will select the appropriate dewatering methods and locations to control the surface and subsurface water to temporarily lower the ground water table and permit excavation within a relatively dry environment. The methods will be determined during the initial construction phase when a complete investigation of the site is conducted.

g. Provide information regarding location and protection of stockpiles.

No stockpiles are anticipated.



210th Street





# Save these dates...

January 27  
*Des Moines Legislative Day*

February 9 & 10  
*Pierre Legislative Days*

March 15  
*Small Business EXPO*

April 13 & 14  
*62<sup>nd</sup> Siouxland/Washington Conference*

April 19 (tentative)  
*Key Executive Welcome*

June 27  
*Golf Classic*

Fall 2016 - Date TBD  
*Annual Dinner*

together we are  
stronger

*“Chamber events help me  
stay connected with  
the pulse of business.”*

- Mary Sterk  
*Sterk Financial Services*



Siouxland  
**Chamber**  
of Commerce

Check our website for more details on upcoming events.  
[www.siouxlandchamber.com](http://www.siouxlandchamber.com)

Susan Fitch, CMC-City Clerk

cville@ruralwaves.us  
www.correctionvilleiowa.com

312 DRIFTWOOD  
P.O. BOX 46  
CORRECTIONVILLE, IOWA 51016  
PHONE: (712) 372-4791  
FAX: (712) 372-4489

Wallace Duncan 2017  
Brent Lennon 2019  
Adam Petty 2019  
Brent Hansen 2017  
Brad Knaack 2017

JAN 19 2016 PM12:00

January 13, 2016

Jeremy Taylor, Chairperson  
Woodbury County Board of Supervisors  
Woodbury County Courthouse  
620 Douglas Street  
Sioux City, IA 51101

Re: Nellie Belle Farms, LLC  
and RSBR Investments, LLC  
- Voluntary Annexation

Dear Board of Supervisors:

Enclosed please find the Notice of City Council Meeting setting public hearing for February 8, 2016 at 7:00 p.m. at City Council Chambers - City Hall, Correctionville, Iowa, regarding the above-referenced voluntary annexation. This notice is given to you pursuant to Iowa Code Sections 368.5 and 368.7. The property which is being annexed is legally described as follows:

COMMENCING AT THE EAST QUARTER CORNER SECTION 34,  
TOWNSHIP 89 NORTH, RANGE 42 WEST, WOODBURY COUNTY, IOWA;  
THENCE ALONG QUARTER SECTION LINE, NORTH 87 DEGREES 43  
MINUTES 43 SECONDS WEST 1014.58 FEET; THENCE DEPARTING SAID  
LINE, NORTH 02 DEGREES 16 MINUTES 17 SECONDS EAST 61.44 FEET  
TO THE POINT OF BEGINNING BEING THE NORTHERN RIGHT-OF-WAY  
OF U.S. HIGHWAY 20; THENCE ALONG SAID RIGHT-OF-WAY THE  
FOLLOWING COURSES AND DISTANCES: NORTH 87 DEGREES 39  
MINUTES 39 SECONDS WEST 164.00 FEET TO STATION 10836+20/53'  
LEFT; THENCE NORTH 02 DEGREES 20 MINUTES 48 SECONDS EAST  
17.00 FEET TO STATION 10836+20/70' LEFT; THENCE NORTH 28 DEGREES  
21 MINUTES 45 SECONDS WEST 176.84 FEET INTERSECTING THE  
EASTERN RIGHT-OF-WAY OF HIGHWAY 31; THENCE ALONG HIGHWAY  
31 RIGHT-OF-WAY THE FOLLOWING COURSES AND DISTANCES:  
NORTH 15 DEGREES 52 MINUTES 56 SECONDS EAST 79.07 FEET TO  
STATION 44+00.1/60' RIGHT; THENCE 85.01 FEET BY ARC DISTANCE  
ALONG A CURVE TO THE RIGHT HAVING A RADIUS OF 1086.00 FEET

AND A CHORD BEARING OF NORTH 10 DEGREES 45 MINUTES 38 SECONDS EAST 84.99 FEET; THENCE DEPARTING SAID RIGHT-OF-WAY; SOUTH 87 DEGREES 39 MINUTES 39 SECONDS EAST 223.32 FEET; THENCE SOUTH 02 DEGREES 20 MINUTES 21 SECONDS WEST 330.00 FEET TO THE POINT OF BEGINNING.

TOGETHER WITH:

COMMENCING AT THE SOUTHEAST CORNER OF THE NORTHEAST  $\frac{1}{4}$  OF SAID SECTION 34; THENCE NORTH  $87^{\circ}44'24''$  WEST, 1,323.76 FEET ALONG THE SOUTH LINE OF SAID NORTHEAST  $\frac{1}{4}$  TO THE SOUTHWEST CORNER OF THE SOUTHEAST  $\frac{1}{4}$  OF THE NORTHEAST  $\frac{1}{4}$  OF SAID SECTION 34; THENCE NORTH  $02^{\circ}21'26''$  EAST, 118.86 FEET ALONG THE WEST LINE OF SAID SOUTHEAST  $\frac{1}{4}$  OF THE NORTHEAST  $\frac{1}{4}$ ; THENCE SOUTH  $87^{\circ}40'04''$  EAST, 54.75 FEET TO A POINT ON THE EXISTING EAST RIGHT OF WAY LINE OF PRIMARY ROAD NO. IA31 AND THE POINT OF BEGINNING; THENCE NORTH  $02^{\circ}17'50''$  EAST, 112.07 FEET ALONG SAID EXISTING EAST RIGHT OF WAY LINE; THENCE SOUTH  $28^{\circ}21'18''$  EAST, 176.83 FEET; THENCE SOUTH  $02^{\circ}19'56''$  WEST, 17.00 FEET; THENCE NORTH  $87^{\circ}40'04''$  WEST, 40.00 FEET; THENCE NORTH  $74^{\circ}47'34''$  WEST, 35.90 FEET; THENCE NORTH  $14^{\circ}52'48''$  WEST, 51.30 FEET TO THE POINT OF BEGINNING, CONTAINING 7755 SQUARE FEET.

TOGETHER WITH:

ALL THAT PART OF THE FEE TITLE RIGHT-OF-WAY OF U.S. HIGHWAY NO. 20 LOCATED IN THE NORTHEAST QUARTER (NE  $\frac{1}{4}$ ) OF SECTION 34, TOWNSHIP 89 NORTH, RANGE 42 WEST OF THE 5TH P.M., WOODBURY COUNTY, IOWA BOUND ON THE NORTH BY THE NORTH LINE OF IA. HIGHWAY 20, LOCALLY KNOWN AS 11TH STREET, ON THE SOUTH BY THE SOUTH LINE OF SAID NORTHEAST QUARTER (NE  $\frac{1}{4}$ ), ON THE WEST BY THE WEST LINE OF IA. HIGHWAY 31, LOCALLY KNOWN AS DRIFTWOOD AVE., AND ON THE EAST BY A LINE PERPENDICULAR TO THE SOUTH LINE OF THE SOUTHEAST QUARTER OF THE NORTHEAST QUARTER (SE  $\frac{1}{4}$  NE  $\frac{1}{4}$ ) OF SAID SECTION 34, PASSING THROUGH A POINT 1014.56 FEET WEST OF THE SOUTHEAST (SE) CORNER OF SAID SOUTHEAST QUARTER OF THE NORTHEAST QUARTER (SE  $\frac{1}{4}$  NE  $\frac{1}{4}$ ).

Sincerely,

City of Correctionville, Iowa

By: *Susan Fitch*  
Susan Fitch, City Clerk

NOTICE OF CITY COUNCIL MEETING FEBRUARY 8, 2016

NOTICE IS HEREBY GIVEN THAT IN ACCORDANCE WITH THE REQUIREMENTS OF CHAPTER 368.5 AND 368.7 OF THE CODE OF IOWA THE CORRECTIONVILLE CITY COUNCIL WILL AT 7:00 P.M. LOCAL TIME, OR AS SOON THERE AFTER AS MAY BE CONSIDERED, ON FEBRUARY 8, 2016, IN THE CITY COUNCIL CHAMBERS CITY HALL, CORRECTIONVILLE, IOWA, HOLD A PUBLIC HEARING ON THE REQUEST OF NELLIE BELLE FARMS, LLC, AN IOWA LIMITED LIABILITY COMPANY, RSBR INVESTMENTS, LLC, A MISSOURI LIMITED LIABILITY COMPANY AND THE CITY OF CORRECTIONVILLE TO VOLUNTARILY ANNEX IN ACCORDANCE WITH 368.5 AND 368.7 OF THE CODE OF IOWA THE FOLLOWING DESCRIBED PROPERTY TO THE CITY OF CORRECTIONVILLE:

LEGAL DESCRIPTION:

COMMENCING AT THE EAST QUARTER CORNER SECTION 34, TOWNSHIP 89 NORTH, RANGE 42 WEST, WOODBURY COUNTY, IOWA; THENCE ALONG QUARTER SECTION LINE, NORTH 87 DEGREES 43 MINUTES 43 SECONDS WEST 1014.58 FEET; THENCE DEPARTING SAID LINE, NORTH 02 DEGREES 16 MINUTES 17 SECONDS EAST 61.44 FEET TO THE POINT OF BEGINNING BEING THE NORTHERN RIGHT-OF-WAY OF U.S. HIGHWAY 20; THENCE ALONG SAID RIGHT-OF-WAY THE FOLLOWING COURSES AND DISTANCES: NORTH 87 DEGREES 39 MINUTES 39 SECONDS WEST 164.00 FEET TO STATION 10836+20/53' LEFT; THENCE NORTH 02 DEGREES 20 MINUTES 48 SECONDS EAST 17.00 FEET TO STATION 10836+20/70' LEFT; THENCE NORTH 28 DEGREES 21 MINUTES 45 SECONDS WEST 176.84 FEET INTERSECTING THE EASTERN RIGHT-OF-WAY OF HIGHWAY 31; THENCE ALONG HIGHWAY 31 RIGHT-OF-WAY THE FOLLOWING COURSES AND DISTANCES: NORTH 15 DEGREES 52 MINUTES 56 SECONDS EAST 79.07 FEET TO STATION 44+00.1/60' RIGHT; THENCE 85.01 FEET BY ARC DISTANCE ALONG A CURVE TO THE RIGHT HAVING A RADIUS OF 1086.00 FEET AND A CHORD BEARING OF NORTH 10 DEGREES 45 MINUTES 38 SECONDS EAST 84.99 FEET; THENCE DEPARTING SAID RIGHT-OF-WAY; SOUTH 87 DEGREES 39 MINUTES 39 SECONDS EAST 223.32 FEET; THENCE SOUTH 02 DEGREES 20 MINUTES 21 SECONDS WEST 330.00 FEET TO THE POINT OF BEGINNING.

TOGETHER WITH:

COMMENCING AT THE SOUTHEAST CORNER OF THE NORTHEAST ¼ OF SAID SECTION 34; THENCE NORTH 87°44'24" WEST, 1,323.76 FEET ALONG THE SOUTH LINE OF SAID NORTHEAST ¼ TO THE SOUTHWEST CORNER OF THE SOUTHEAST ¼ OF THE NORTHEAST ¼ OF SAID SECTION 34; THENCE NORTH 02°21'26" EAST, 118.86 FEET ALONG THE WEST LINE OF SAID SOUTHEAST ¼ OF THE NORTHEAST ¼; THENCE SOUTH 87°40'04" EAST, 54.75 FEET TO A POINT ON THE EXISTING EAST RIGHT OF WAY LINE OF PRIMARY ROAD NO. IA31 AND THE POINT OF BEGINNING; THENCE NORTH 02°17'50"

**WOODBURY COUNTY JAIL WEEKLY POPULATION REPORT AT 0600 HRS.**

<u>DATE</u>	<u>Day</u>	<u>DAILY TOTAL</u>	<u>LEC</u>	<u>ELECTRONIC MONITORING</u>	<u>PRAIRIE HILLS</u>	<u>FEDERAL PRISONERS</u>
1/16/16	Saturday	201	188	13	0	19
1/17/16	Sunday	205	191	14	0	19
1/18/16	Monday	208	194	14	0	19
1/19/16	Tuesday	215	201	14	0	19
1/20/16	Wednesday	216	203	13	0	19
1/21/16	Thursday	214	201	13	0	21
1/22/16	Friday	223	209	14	0	21
		<b>1482</b>	<b>1387</b>	<b>95</b>	<b>0</b>	<b>137</b>
<b>24 HOUR DAILY COUNT</b>						
<u>DATE</u>	<u>TOTAL</u>	<u>MALE</u>	<u>FEMALE</u>			
1/16/16	228	194	34			
1/17/16	220	187	33			
1/18/16	219	185	34			
1/19/16	229	193	36			
1/20/16	236	200	36			
1/21/16	235	199	36			
1/22/16	246	209	37			
	<b>1613</b>	<b>1367</b>	<b>246</b>			
*Highest population count each day						