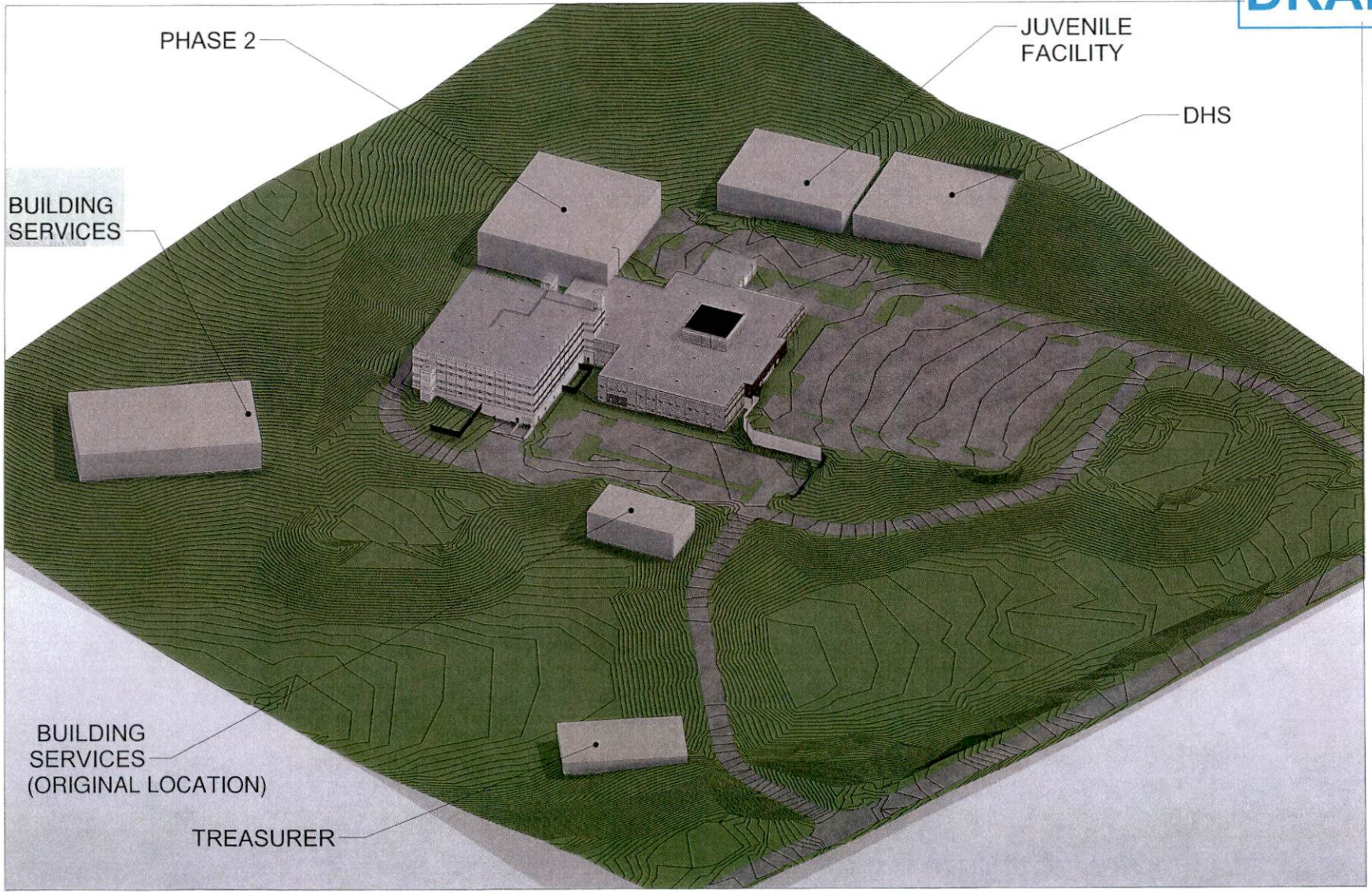


Woodbury County Building Services

Square Footage of the buildings current schematic design	11,887
Current allowance in Hausmann Construction's Contract	\$250,000
Current Funds re-allocated to Building Services Facility in CIP	\$315,000
LEC project funds currently unallocated	\$941,000

DRAFT

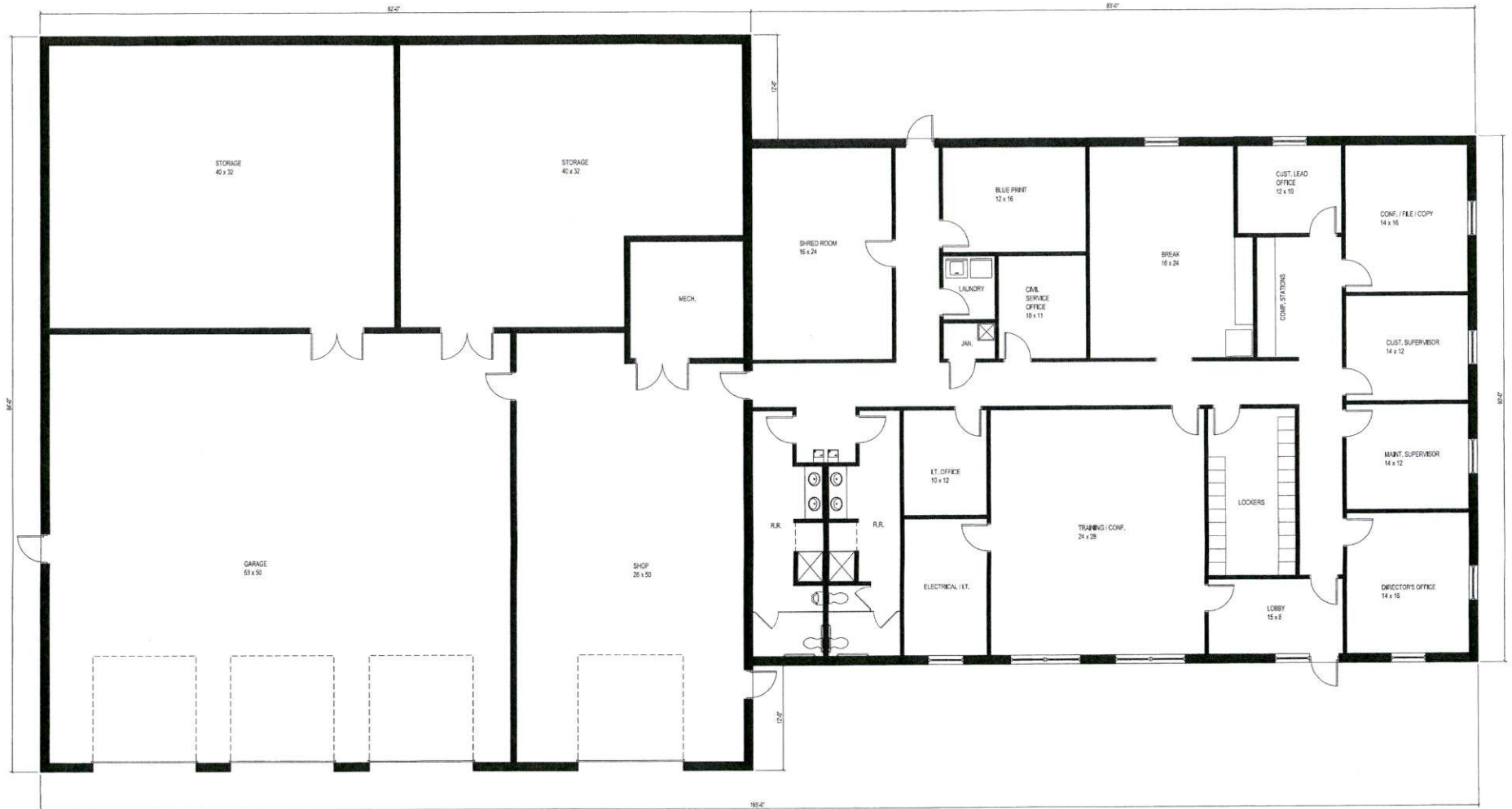


10.07.2022
OPTION 1 - PHASE 2
MASTER SITE

WOODBURY COUNTY, IA

ARCHITECTS TO CONSULT: Changes in the preliminary plans are only if they do not affect the overall site, grading, utilities, and other major components. Revisions will occur at the architect's discretion.

DRAFT



1 MAIN FLOOR PLAN
3/16" = 1'-0"

03.24.2023
SCHEMATIC 1.01
FLOOR PLANS

WOODBURY CO. BUILDING SERVICES
28th STREET

GOLDBERG GROUP ARCHITECTS
520 Francis Street, Suite 200C, St. Joseph, MO, 64501, 816-233-9300

5

HEAVY DUTY CHAIRS: Diagram is for preliminary purposes only. It does not take into account site, grading, utilities, individual equipment needs, structural load, crowd or adjacency factors.