



**NOTICE OF MEETING OF THE WOODBURY COUNTY BOARD OF SUPERVISORS  
( APRIL 7, 2026) (WEEK 15 OF 2026)**

Live streaming at:

<https://www.youtube.com/user/woodburycountyiowa>

Agenda and Minutes available at:

[www.woodburycountyiowa.gov](http://www.woodburycountyiowa.gov)

Daniel A. Bittinger II  
389-4405

[dbittinger@woodburycountyiowa.gov](mailto:dbittinger@woodburycountyiowa.gov)

Kent T. Carper  
570-7681

[kcarper@woodburycountyiowa.gov](mailto:kcarper@woodburycountyiowa.gov)

David L. Dietrich  
870-9224

[ddietrich@woodburycountyiowa.gov](mailto:ddietrich@woodburycountyiowa.gov)

Mark E. Nelson  
540-1259

[mnelson@woodburycountyiowa.gov](mailto:mnelson@woodburycountyiowa.gov)

Matthew A. Ung  
490-7852

[matthewung@woodburycountyiowa.gov](mailto:matthewung@woodburycountyiowa.gov)

You are hereby notified a meeting of the Woodbury County Board of Supervisors will be held April 7, 2026, at **4:30 p.m.** in the Basement of the Courthouse, 620 Douglas Street, Sioux City, Iowa, for the purpose of taking official action on the agenda items shown hereinafter and for such other business that may properly come before the Board.

This is a formal meeting during which the Board may take official action on various items of business. Members of the public wishing to speak on an item must follow the participation rules adopted by the Board of Supervisors.

1. Please silence cell phones and other devices while in the Boardroom.
2. The Chair will recognize the agenda item presenter before asking for public comments or board discussion.
3. Members of the public will approach the microphone one at a time and give their name and city of residence before their statement.
4. Members of the public who comment will limit their remarks to three minutes on any one item and address their remarks to the Board.
5. At the beginning of discussion on any item, the Chair may request statements in favor of an action be heard first followed by statements in opposition to the action. The Chair may also request delegates provide statements on behalf of multiple speakers.
6. Any concerns or questions which do not relate to a scheduled item on the agenda will be heard under the item "Citizen Concerns." Please note the Board is legally prohibited from taking action on or engaging in deliberation on concerns not listed on the agenda, and in such cases the Chair will request further discussion take place after properly noticed.
7. Public comment by electronic or telephonic means is prohibited except for a particular agenda item when approved by the Chair 24 hours before a meeting or by a majority of the board during a meeting for a subsequent meeting.

---

---

**AGENDA**

**2:30 p.m.** Joint closed session with LEC Authority {Iowa Code Section 21.5 (1) (c)}  
**Dennis Butler Meeting Room**

**4:30 p.m.** Call Meeting to Order – Pledge of Allegiance to the Flag – Moment of Silence

1. Approval of the agenda

Action

**Consent Agenda**

**Items 2 through 9 constitute a Consent Agenda of routine action items to be considered by one motion. Items pass unanimously unless a separate vote is requested by a Board Member.**

2. Approval of the minutes of March 31, 2026
3. Approval of claims
4. Board Administration – Ryan Ericson  
Approve setting the public hearing for the FY27 Proposed Budget on April 28<sup>th</sup> at 4:50 p.m.

5. Board Administration – Karen James  
Approval of resolution thanking and commending Robert Nelson for years of service with Woodbury County
6. Board of Supervisors – Mark Nelson  
Approval of letter of support for Community Action Agency of Siouxland
7. Human Resources – Melissa Thomas
  - a. Approval of Memorandum of Personnel Transactions
  - b. Authorization to Initiate Hiring Process
8. Secondary Roads – Laura Sievers  
Approval of resolution for the Weed Destruction order for 2026
9. County Auditor – Michelle Skaff
  - a. Receive the Auditor’s Quarterly Report
  - b. Receive the appointment of Dr. Christian Supiot to the Sioux City Community School District Board of Directors to fill the vacancy left when Jan J. George resigned
  - c. Approval of Liquor License Application for Anthon Golf Course, Anthon

**End of Consent Agenda**

10. Building Services – Kenny Schmitz  
Approve to change original bid opening date from April 7<sup>th</sup> to April 21<sup>st</sup> at 3:00 p.m.      Action  
Board of Supervisors Office
11. Planning/Zoning – Daniel Priestley  
Approval of resolution to waive county building permit fees associated with repair      Action  
and redevelopment of fire-damaged property following the March 28, 2026, fire
12. Board Administration – Ryan Ericson
  - a. Approval of multi-functional copier/printer maintenance agreement for      Action  
medical examiner
  - b. Approve payment of \$713,308.74 for the County’s share of Elk Creek Road      Action  
Project to the City of Sioux City
  - c. Approve resolution to transfer funds (\$714,000) from General Basic to      Action  
Secondary Roads
13. Budget Review Discussion for FY 27  
Miscellaneous Review – All Funds      Action
14. Reports on Committee Meetings      Information
15. Citizen Concerns      Information
16. Board Concerns      Information

**ADJOURNMENT**

## CALENDAR OF EVENTS

<b>MON., APR 6</b>	<b>5:00 p.m.</b>	Board of Adjustment meeting, Courthouse Basement Boardroom
<b>WED., APR 8</b>	<b>8:05 a.m.</b>	Woodbury County Information Communication Commission, First Floor Boardroom
	<b>12:00 p.m.</b>	District Board of Health Meeting, 1014 Nebraska St.
<b>THU., APR 9</b>	<b>4:00 p.m.</b>	Conservation Board Meeting, Dorothy Pecaut Nature Center, Stone Park
<b>WED., APR 15</b>	<b>12:00 p.m.</b>	Siouxland Economic Development Corporation Meeting, 617 Pierce St., Ste. 202
<b>THU., APR 16</b>	<b>4:30 p.m.</b>	Community Action Agency of Siouxland Board Meeting, 2700 Leech Avenue
<b>FRI., APR 17</b>	<b>12:00 p.m.</b>	Siouxland Human Investment Partnership Board Meeting, 607 – 4 <sup>th</sup> Street
<b>WED., APR 22</b>	<b>1:00 p.m.</b>	SIMPCO Hazardous Materials Response Commission Meeting, 6401 Gordon Dr.
	<b>1:30 p.m.</b>	SIMPCO Local Emergency Planning Committee Meeting, 6401 Gordon Dr.
<b>THU., APR 23</b>	<b>11:00 a.m.</b>	Siouxland Regional Transit Systems (SRTS) Board Meeting, 6401 Gordon Dr.
<b>MON. APR 27</b>	<b>5:00 p.m.</b>	Zoning Commission Meeting, Courthouse Basement Boardroom
	<b>1:00 p.m.</b>	Region IV Hazardous Materials Response Commission, 6401 Gordon
<b>MON., MAY 4</b>	<b>5:00 p.m.</b>	Board of Adjustment meeting, Courthouse Basement Boardroom
<b>WED., MAY 6</b>	<b>11:00 a.m.</b>	Loess Hills Alliance Stewardship Meeting, Pisgah, Iowa
	<b>1:00 p.m.</b>	Loess Hills Alliance Executive Meeting
	<b>4:45 p.m.</b>	Veteran Affairs Meeting, Veteran Affairs Office, 1211 Tri-View Ave.
<b>THU., MAY 7</b>	<b>12:00 p.m.</b>	SIMPCO Regional Policy & Legislative Affairs Committee, 6401 Gordon Dr.
<b>WED., MAY 13</b>	<b>8:05 a.m.</b>	Woodbury County Information Communication Commission, First Floor Boardroom
	<b>12:00 p.m.</b>	District Board of Health Meeting, 1014 Nebraska St.
	<b>6:30 p.m.</b>	911 Service Board Meeting, Public Safety Center, Climbing Hill
<b>THU., MAY 14</b>	<b>12:00 p.m.</b>	SIMPCO Board of Directors, 6401 Gordon Drive.
	<b>4:00 p.m.</b>	Conservation Board Meeting, Dorothy Pecaut Nature Center, Stone Park

**Woodbury County is an Equal Opportunity Employer. In compliance with the Americans with Disabilities Act, the County will consider reasonable accommodations for qualified individuals with disabilities and encourages prospective employees and incumbents to discuss potential accommodations with the Employer.**

*Federal and state laws prohibit employment and/or public accommodation discrimination on the basis of age, color, creed, disability, gender identity, national origin, pregnancy, race, religion, sex, sexual orientation or veteran's status. If you believe you have been discriminated against, please contact the Iowa Civil Rights Commission at 800-457-4416 or Iowa Department of Transportation's civil rights coordinator. If you need accommodations because of a disability to access the Iowa Department of Transportation's services, contact the agency's affirmative action officer at 800-262-0003.*

**MARCH 31, 2026, FOURTEENTH MEETING OF THE WOODBURY COUNTY BOARD OF SUPERVISORS**

The Board of Supervisors met on Tuesday, March 31, 2026, at 4:30 p.m. Board members present were Carper, Dietrich, Nelson, Ung, and Bittinger II. Staff members present were Karen James, Board Administrative Assistant, Ryan Ericson, Budget and Finance Director, Joshua Widman, Assistant County Attorney, Melissa Thomas, HR Director, and Michelle Skaff, Auditor/Clerk to the Board.

The regular meeting was called to order with the Pledge of Allegiance to the Flag and a Moment of Silence.

1. Motion by Nelson second by Bittinger to approve the March 31, 2026 agenda. Carried 5-0. Copy filed.

Motion by Nelson second by Dietrich to approve the following items by consent:

2. To approve minutes of the March 24, 2026 meeting. Copy filed.
3. To approve the claims totaling \$637,210.29. Copy filed.
4. To approve and authorize the Chairperson to sign a Resolution approving petition for suspension of taxes for Betty Huls, parcel #894721452012, 1609 Virginia St.

**WOODBURY COUNTY, IOWA**  
**RESOLUTION #14,015**  
**RESOLUTION APPROVING PETITION FOR SUSPENSION OF TAXES**

**WHEREAS**, Betty Huls, as titleholder of a property located 1609 Virginia St., Sioux City, Iowa, Woodbury County, Iowa, and legally described as follows:

**Parcel #894721452012**

**GLABRAITHS 2<sup>ND</sup> LOT 3 BLOCK 5**

**WHEREAS**, Betty Huls of the aforementioned property has petitioned the Board of Supervisors for a suspension of taxes pursuant to the 2017 Iowa Code section 427.9, and

**WHEREAS**, the Board of Supervisors recognizes from documents provided that the petitioner is unable to provide to the public revenue; and

**NOW, THEREFORE, BE IT RESOLVED**, that the Woodbury County Board of Supervisors hereby grants the request for a suspension of taxes and hereby directs the Woodbury County Treasurer to record the approval of this tax suspension for this property.

**SO RESOLVED** this 31<sup>st</sup> day of March 2026.

WOODBURY COUNTY BOARD OF SUPERVISORS  
Copy filed.

5. To approve and authorize the Chairperson to sign a Resolution setting the public hearing and sale date for parcel #884706478016, 2715 S. Cleveland St.

**WOODBURY COUNTY, IOWA**  
**RESOLUTION #14,016**  
**NOTICE OF PROPERTY SALE**

**Parcels #884706478016**

**WHEREAS** Woodbury County, Iowa was the owner under a tax deed of a certain parcel of real estate described as:

**E ½ Vacated N-S alley abutting Lot Twenty-three (23), Block Three (3), Lorraine Place Addition, City of Sioux City in the County of Woodbury and State of Iowa (2715 S. Cleveland St.)**

**NOW THEREFORE,**

**BE IT RESOLVED** by the Board of Supervisors of Woodbury County, Iowa as follows:

1. That a public hearing on the aforesaid proposal shall be held on The **14<sup>th</sup> Day of April, 2026 at 4:35 o'clock p.m.** in the basement of the Woodbury County Courthouse.
2. That said Board proposes to sell the said parcel of real estate at a public auction to be held on the **14<sup>th</sup> Day of April, 2026**, immediately following the closing of the public hearing.
3. That said Board proposes to sell the said real estate to the highest bidder at or above a **total minimum bid of \$125.00** plus recording fees.
4. That this resolution, preceded by the caption "Notice of Property Sale" and except for this subparagraph 4 be published as notice of the aforesaid proposal, hearing and sale.

Dated this 31<sup>st</sup> Day of March, 2026.

WOODBURY COUNTY BOARD OF SUPERVISORS  
Copy filed.

6. To approve letter of commitment for the BOOST Restart Grant project. Copy filed.
7. To approve the letter of support for Woodbury County Veteran Affairs. Copy filed.
- 8a. To approve the appointment of Logan Chicoine, Deputy, County Sheriff Dept., effective 04-20-2026, \$30.59/hour. Authorization to Hire on 3/31/26. Entry Level Salary: \$30.59/hr. Copy filed.
- 8b. To approve and authorize the Chairperson to sign the Authorization to initiate the hiring process for Deputy, County Sheriff Dept. CWA Deputies: \$30.59/hour. Copy filed.
- 8c. To approve the request of Randi Campbell to remain on the County Health, Dental, and Vision insurances. Copy filed.

Carried 5-0.

9. Motion by Nelson second by Bittinger to approve to appoint Supervisor Dietrich and Supervisor Bittinger as a sub-committee to serve as Board representatives for discussions with Ida County on merging public health services. Carried 5-0. Copy filed.
10. A public hearing was held at 4:40 p.m. for courthouse freight elevator project. The Chairperson called on anyone wishing to be heard. Copy filed.

Auditor Recorder Michelle Skaff addressed the board with a request to schedule the replacement after the November Election to allow for moving elections equipment for the election.

Teresa Hebert, CMBA Architects, addressed the board regarding the timing of the replacement.

Motion by Nelson second by Dietrich to close the public hearing. Carried 5-0.

11. Motion by Nelson second by Carper to approve 28E Agreement between Woodbury County Iowa, Woodbury County Attorney, and the City of Cushing, IA. Carried 5-0. Copy filed.

12. Motion by Nelson second by Dietrich to approve up to .460 FTEs to hire temporary clerical help for the 2026 Primary Election. Carried 5-0. Copy filed.

13a. Motion by Nelson second by Bittinger to receive a document from Secondary Roads Engineer Sievers. Carried 5-0. Copy filed.

Motion by Ung second by Bittinger to deny a variance request for a digital sign overhanging into County right-of-way at Lawton-Bronson Elementary. Carried 5-0. Copy filed.

13b. Motion by Nelson second by Dietrich to receive for signatures a Resolution establishing a lower speed limit on Banner Avenue and 235<sup>th</sup> St. Carried 5-0.

**SPEED LIMIT RESOLUTION  
235<sup>TH</sup> STREET INTERCHANGE CONSTRUCTION  
RESOLUTION #14,017**

WHEREAS: The Board of Supervisors of Woodbury County is empowered under the authority of sections 321.255 and 321.285, subsection 4 of the Code of Iowa to determine upon the basis of an engineering and traffic investigation conducted by the County Engineer that the speed limit of any secondary road is greater than is reasonable and proper under the conditions existing, and may determine and declare a reasonable and proper speed limit, and

WHEREAS: Such investigation has been requested and completed and the County Engineer has reached an opinion concerning the reasonable and proper speed for the road listed herein,

NOW, THEREFORE BE IT RESOLVED, by the Woodbury County Board of Supervisors that the following speed limit be established, and appropriate signs erected at the locations described as follows:

- 1) Banner Avenue beginning at the intersection of Dogwood Trail/Port Neal Road, then southeasterly to 235<sup>th</sup> Street, a speed limit of 35 miles per hour is established.
- 2) Continuing on 235<sup>th</sup> Street at the transition from Banner Avenue then east to the intersection of Old Highway 75, a speed limit of 35 miles per hour is established.

Speed limit shall be effective when appropriate signs giving notice of the speed limits are erected.

Passed and approved this 31<sup>st</sup> day of March 2026 by the Woodbury County Board of Supervisors.

WOODBURY COUNTY BOARD OF SUPERVISORS  
Copy filed.

14a. Motion by Nelson second by Bittinger to approve Bond Counsel Engagement Agreement for proposed issuance of not to exceed \$19,500,000 General Obligation Capital Loan Notes. Carried 5-0. Copy filed.

14b. Motion by Nelson second by Dietrich to approve and authorize the Chairperson to sign a Resolution fixing date for a meeting on the authorization of a loan agreement and the issuance of not to exceed \$19,500,000 General Obligation Capital Loan Notes of Woodbury County, State of Iowa (for essential county purposes), and providing for publication of notice thereof (Urban Renewal Authority). Carried 5-0.

**RESOLUTION #14,018**

**RESOLUTION FIXING DATE FOR A MEETING ON THE AUTHORIZATION OF A LOAN AGREEMENT AND THE ISSUANCE OF NOT TO EXCEED \$19,500,000 GENERAL OBLIGATION CAPITAL LOAN NOTES OF WOODBURY COUNTY, STATE OF IOWA (FOR ESSENTIAL COUNTY PURPOSES), AND PROVIDING FOR PUBLICATION OF NOTICE THEREOF**

WHEREAS, this Board found and determined that certain areas located within the County are eligible and should be designated as an urban renewal area under Iowa law, and approved and adopted the Grow Woodbury County Urban Renewal Plan (the "Plan") for the Grow Woodbury County Urban Renewal Area (the "Area" or "Urban Renewal Area"), which Plan is on file in the office of the Recorder of Woodbury County, Iowa; and

WHEREAS, the Plan has subsequently been amended several times, lastly by the 2026 Amendment to the Plan, adopted on February 24, 2026, by Resolution No. 14,003, which Amendment added urban renewal projects proposed to be undertaken within the Area, and added land to the Area; and

WHEREAS, it is deemed necessary and advisable that Woodbury County, State of Iowa, should provide for the authorization of a Loan Agreement and issuance of General Obligation Capital Loan Notes, to the amount of not to exceed \$19,500,000, as authorized by Sections 331.402, 331.443 and 403.12, of the Code of Iowa, for the purpose of providing funds to pay costs of carrying out essential county purpose project(s) as hereinafter described; and

WHEREAS, the Loan Agreement and Notes shall be payable from the Debt Service Fund; and

WHEREAS, before a Loan Agreement may be authorized and General Obligation Capital Loan Notes, issued to evidence the obligation of the County thereunder, it is necessary to comply with the provisions of the Code of Iowa, as amended, and to publish a notice of the proposal and of the time and place of the meeting at which the Board proposes to take action for the authorization of the Loan Agreement and Notes and to receive oral and/or written objections from any resident or property owner of the County to such action.

WHEREAS, before notes may be issued, it is necessary to comply with the procedural requirements of Chapters 331 and 403 of the Code of Iowa, and to publish a notice of the proposal to issue such notes and the right to petition for an election.

NOW, THEREFORE, BE IT RESOLVED BY THE BOARD OF SUPERVISORS OF WOODBURY COUNTY, STATE OF IOWA:

Section 1. That this Board meet in the Board Room, Woodbury County Courthouse, 620 Douglas Street, Sioux City, Iowa, at 4:40 P.M., on the 28<sup>th</sup> day of April, 2026, for the purpose of taking action on the matter of the authorization of a Loan Agreement and issuance of not to exceed \$19,500,000 General Obligation Capital Loan Notes, for essential county purposes, the proceeds of which notes will be used to provide funds to pay the costs of aiding in the planning, undertaking, and carrying out of urban renewal projects under the authority of Chapter 403 and the 2026 Amendment to the Grow Woodbury County Urban Renewal Plan including the Southbridge Interchange Project.

Section 2. The Auditor is authorized and directed to proceed on behalf of the County with the negotiation of terms of a Loan Agreement and the issuance of General Obligation Capital Loan Notes, evidencing the County's obligations to a principal amount of not to exceed \$19,500,000, to select a date for the final approval thereof, to cause to be prepared such notice and sale information as may appear appropriate, to publish and distribute the same on behalf of the County and this Board and otherwise to take all action necessary to permit the completion of a loan on a basis favorable to the County and acceptable to the Board.

Section 3. That the Auditor is hereby directed to cause at least one publication to be made of a notice of the meeting, in a legal newspaper, printed wholly in the English language, published at least once weekly, and having general circulation in the County. The publication to be not less than ten clear days nor more than twenty days before the date of the public meeting on the issuance of the Notes.

Section 4. The notice of the proposed action to issue notes shall be in substantially the following form:

(To be published between: April 8, 2026 and April 17, 2026)

NOTICE OF MEETING OF THE BOARD OF SUPERVISORS OF WOODBURY COUNTY, STATE OF IOWA, ON THE MATTER OF THE PROPOSED AUTHORIZATION OF A LOAN AGREEMENT AND THE ISSUANCE OF NOT TO EXCEED \$19,500,000 GENERAL OBLIGATION CAPITAL LOAN NOTES OF THE COUNTY (FOR ESSENTIAL COUNTY PURPOSES), AND THE HEARING ON THE ISSUANCE THEREOF

PUBLIC NOTICE is hereby given that the Board of Supervisors of Woodbury County, State of Iowa, will hold a public hearing on the 28<sup>th</sup> day of April, 2026, at 4:40 P.M., in the Board Room, Woodbury County Courthouse, 620 Douglas Street, Sioux City, Iowa, at which meeting the Board proposes to take additional action for the authorization of a Loan Agreement and the issuance of not to exceed \$19,500,000 General Obligation Capital Loan Notes, for essential county purposes, to provide funds to pay the costs of aiding in the planning, undertaking, and carrying out of urban renewal projects under the authority of Chapter 403 and the 2026 Amendment to the Grow Woodbury County Urban Renewal Plan including the Southbridge Interchange Project. Principal and interest on the proposed Loan Agreement will be payable from the Debt Service Fund.

At any time before the date of the meeting, a petition, asking that the question of issuing such Notes be submitted to the legal voters of the County, may be filed with the Auditor of the County in the manner provided by Section 331.306 of the Code of Iowa, pursuant to the provisions of Sections 331.402, 331.441(2)(b)(14), 331.443 and 403.12 of the Code of Iowa.

The annual increase in property taxes as the result of the issuance on a residential property with an actual value of one hundred thousand dollars is estimated not to exceed \$31.32. This estimate only considers the impact on property taxes of financing authority established by this hearing for the above-described project(s). The note may be issued in one or more series over a number of years. Finance authority established by this hearing may be combined with additional finance authority, causing the estimate for the annual increase in property taxes for the entire issuance to be greater than the estimate stated herein. Changes in other levies may cause the actual annual increase in property taxes to vary.

At the above meeting the Board shall receive oral or written objections from any resident or property owner of the County to the above action. After all objections have been received and considered, the Board will at the meeting or at any adjournment thereof, take additional action for the authorization of a Loan Agreement and the issuance of the Notes to evidence the obligation of the County thereunder or will abandon the proposal to issue said Notes.

This notice is given by order of the Board of Supervisors of Woodbury County, State of Iowa, as provided by Chapters 331 and 403 of the Code of Iowa.

Dated this 31<sup>st</sup> day of March, 2026.

PASSED AND APPROVED this 31<sup>st</sup> day of March, 2026.

WOODBURY COUNTY BOARD OF SUPERVISORS  
Copy filed.

- 14c. Motion by Nelson second by Dietrich to receive the Engineer’s report regarding the Southbridge Interchange from Director Ericson. Carried 5-0. Copy filed.

Motion by Nelson second by Bittinger to approve and authorize the Chairperson to sign a Resolution fixing date for a meeting on the authorization of a loan agreement and the issuance of not to exceed \$19,500,000 General Obligation Capital Loan Notes of Woodbury County, State of Iowa (for essential county purposes) and providing for publication of notice thereof (Non-Urban Renewal Economic Development). Carried 5-0.

**RESOLUTION #14,019**

**RESOLUTION FIXING DATE FOR A MEETING ON THE AUTHORIZATION OF A LOAN AGREEMENT AND THE ISSUANCE OF NOT TO EXCEED \$19,500,000 GENERAL OBLIGATION CAPITAL LOAN NOTES OF WOODBURY COUNTY, STATE OF IOWA (FOR ESSENTIAL COUNTY PURPOSES), AND PROVIDING FOR PUBLICATION OF NOTICE THEREOF**

WHEREAS, it is deemed necessary and advisable that Woodbury County, State of Iowa, should provide for the authorization of a Loan Agreement and issuance of General Obligation Capital Loan Notes, to the amount of not to exceed \$19,500,000, as authorized by Sections 331.402 and 331.443, of the Code of Iowa, for the purpose of providing funds to pay costs of carrying out essential county purpose project(s) as hereinafter described; and

WHEREAS, the Loan Agreement and Notes shall be payable from the Debt Service Fund; and

WHEREAS, before a Loan Agreement may be authorized and General Obligation Capital Loan Notes, issued to evidence the obligation of the County thereunder, it is necessary to comply with the provisions of the Code of Iowa, as amended, and to publish a notice of the proposal and of the time and place of the meeting at which the Board proposes to take action for the authorization of the Loan Agreement and Notes and to receive oral and/or written objections from any resident or property owner of the County to such action.

NOW, THEREFORE, BE IT RESOLVED BY THE BOARD OF SUPERVISORS OF WOODBURY COUNTY, STATE OF IOWA:

Section 1. That this Board meet in the Board Room, Woodbury County Courthouse, 620 Douglas Street, Sioux City, Iowa, at 4:45 P.M., on the 28<sup>th</sup> day of April, 2026, for the purpose of taking action on the matter of the authorization of a Loan Agreement and issuance of not to exceed \$19,500,000 General Obligation Capital Loan Notes, for essential county purposes, the proceeds of which notes will be used to provide funds to pay the costs of capital projects for the construction, reconstruction, improvement, repair, or equipping of bridges, roads, and culverts which assist in economic development through the creation of jobs and wealth including the Southbridge Interchange Project.

Section 2. That pursuant to Iowa Code Section 331.441(2)(b)(16), capital projects must be found to “assist in economic development which creates jobs and wealth”. No procedure for establishing this is spelled out in the Code. Accordingly, pursuant to Iowa Code Section 331.301(5), the Board elects to have a financial impact report prepared for purposes of determining the impacts of the proposed projects.

Section 3. The County Engineer has compiled data and prepared report, a copy of which is attached hereto and incorporated herein by this reference, which demonstrates the economic impact of the proposed projects. Having reviewed said report, this Board finds:

- a) These capital improvement projects:
  - i. are intended to foster development and bring heavier industries, better paying jobs,

and the opportunity for wealth creation to the area;

ii. provide necessary, safe and reliable access to the Southbridge Business Park, located south of the Sioux Gateway Airport, and the Sergeant Bluff Industrial Park, located north of the project site at the southern edge of Sergeant Bluff;

iii. provide necessary, safe and reliable access for businesses who wish to take advantage of nearby freight multimodal options;

iv. provide necessary access to major industrial and commercial operations, including Sabre Industries – Connecting America's Communities, Cold Link Logistics, Dayton Freight, Old Dominion Trucking, CF Industries, Mid-American Energy Company and Gelita USA;

v. provide major thoroughfares for workers traveling to and from work within the County, and traveling in and out of Southbridge Business Park and Sergeant Bluff Industrial Park;

vi. are needed to provide necessary infrastructure to support estimates from SIMPCO and reported in the 2022 Interchange Justification Report originally projecting a net increase of 6,227 new jobs between 2010 and 2050 in the Southbridge Business Park, Sergeant Bluff Industrial Park, and Bridgeport West Industrial Park (north of the airport). The projections were later increased by an additional 6,915 jobs, although a portion of these new jobs are expected north of the airport. These projections are dependent on the interchange.

a) The health, safety and welfare of our citizens are dependent upon efficient travels within the County. Adequate and current infrastructure is necessary to achieve these goals and attracts a quality workforce for county industries seeking to expand.

b) Access to recreational areas and activities is a draw to a quality workforce. Those who choose to work in the urban areas may also choose to live in rural area and need adequate infrastructure to access their urban employment.

c) Agricultural development within the County accounts for a major source of jobs and wealth within the County. Safe and efficient access to the market, grain elevators and fields are essential to the growth and maintenance of this industry in the County.

For the foregoing reasons, this Board finds the proposed capital improvement projects enumerated in the Engineer's report assist economic development efforts within the County which are designed to create jobs and wealth for citizens of the County.

Section 4. The Auditor is authorized and directed to proceed on behalf of the County with the negotiation of terms of a Loan Agreement and the issuance of General Obligation Capital Loan Notes, evidencing the County's obligations to a principal amount of not to exceed \$19,500,000, to select a date for the final approval thereof, to cause to be prepared such notice and sale information as may appear appropriate, to publish and distribute the same on behalf of the County and this Board and otherwise to take all action necessary to permit the completion of a loan on a basis favorable to the County and acceptable to the Board.

Section 5. That the Auditor is hereby directed to cause at least one publication to be made of a notice of the meeting, in a legal newspaper, printed wholly in the English language, published at least once weekly, and having general circulation in the County. The publication to be not less than four clear days nor more than twenty days before the date of the public meeting on the issuance of the Notes.

Section 6. The notice of the proposed action to issue notes shall be in substantially the following form:

(To be published between: April 8, 2026 and April 23, 2026)

NOTICE OF MEETING OF THE BOARD OF SUPERVISORS OF WOODBURY COUNTY, STATE OF IOWA, ON THE MATTER OF THE PROPOSED AUTHORIZATION OF A LOAN AGREEMENT AND THE ISSUANCE OF NOT TO EXCEED \$19,500,000 GENERAL OBLIGATION CAPITAL LOAN NOTES OF THE COUNTY (FOR ESSENTIAL COUNTY PURPOSES), AND THE HEARING ON THE ISSUANCE THEREOF

PUBLIC NOTICE is hereby given that the Board of Supervisors of Woodbury County, State of Iowa, will hold a public hearing on the 28<sup>th</sup> day of April, 2026, at 4:45 P.M., in the Board Room, Woodbury County Courthouse, 620 Douglas Street, Sioux City, Iowa, at which meeting the Board proposes to take additional action for the authorization of a Loan Agreement and the issuance of not to exceed \$19,500,000 General Obligation Capital Loan Notes, for essential county purposes, to provide funds to pay the costs of capital projects for the construction, reconstruction, improvement, repair, or equipping of bridges, roads, and culverts such capital project assisting in economic development which creates jobs and wealth including the Southbridge Interchange Project. Principal and interest on the proposed Loan Agreement will be payable from the Debt Service Fund.

The annual increase in property taxes as the result of the issuance on a residential property with an actual value of one hundred thousand dollars is estimated not to exceed \$31.32. This estimate only considers the impact on property taxes of financing authority established by this hearing for the above-described project(s). The note may be issued in one or more series over a number of years. Finance authority established by this hearing may be combined with additional finance authority, causing the estimate for the annual increase in property taxes for the entire issuance to be greater than the estimate stated herein. Changes in other levies may cause the actual annual increase in property taxes to vary.

At the above meeting the Board shall receive oral or written objections from any resident or property owner of the County to the above action. After all objections have been received and considered, the Board will at the meeting or at any adjournment thereof, take additional action for the authorization of a Loan Agreement and the issuance of the Notes to evidence the obligation of the County thereunder or will abandon the proposal to issue said Notes.

This notice is given by order of the Board of Supervisors of Woodbury County, State of Iowa, as provided by Sections 331.402 and 331.443 of the Code of Iowa.

Dated this 31<sup>st</sup> day of March, 2026.

PASSED AND APPROVED this 31<sup>st</sup> day of March, 2026.

WOODBURY COUNTY BOARD OF SUPERVISORS  
Copy filed.

- 15. The board reviewed the FY27 budget.
- 16. The Board shared reports on committee meetings.
- 17. James Loomis and Laura Sievers addressed the board regarding the fire response in the county over the weekend.
- 18. Board concerns were heard.

The Board adjourned the regular meeting until April 7, 2026.

Meeting sign in sheet. Copy filed.

WOODBURY COUNTY, IOWA

RESOLUTION NO. \_\_\_\_\_

A RESOLUTION THANKING AND COMMENDING

*Robert Nelson*

FOR HIS SERVICE TO WOODBURY COUNTY

WHEREAS, Robert Nelson has capably served Woodbury County as an employee of the Woodbury County Emergency Services for 32 years from May 16, 1994, to April 9, 2026.

WHEREAS, the service given by Robert Nelson as a Woodbury County employee, has been characterized by his dedication to the best interests of the citizens of Woodbury County; and

NOW THEREFORE, BE IT RESOLVED BY THE BOARD OF SUPERVISORS OF WOODBURY COUNTY, IOWA that the undersigned members of this Board thanks and commends Robert Nelson for his years of service to Woodbury County; and

BE IT FURTHER RESOLVED that it is the wish of all those signing below that the future hold only the best for this very deserving person, Robert Nelson

BE IT SO RESOLVED this 7th day of April, 2026.

WOODBURY COUNTY BOARD OF SUPERVISORS

\_\_\_\_\_  
Mark E. Nelson, Chairman

\_\_\_\_\_  
Kent T. Carper, Member

\_\_\_\_\_  
David L. Dietrich, Member

\_\_\_\_\_  
Daniel A. Bittinger, III, Member

\_\_\_\_\_  
Matthew A. Ung, Member

Attest:

\_\_\_\_\_  
Michelle K. Skaff, Woodbury County Auditor



# Woodbury County Board of Supervisors

Courthouse • Room 104  
620 Douglas Street • Sioux City, Iowa 51101  
Telephone (712) 279-6525 • Fax (712) 279-6577

## MEMBERS

**DANIEL A. BITTINGER II**  
SIOUX CITY

**KENT T. CARPER**  
SIOUX CITY

**DAVID L. DIETRICH**  
HORNICK

**MARK E. NELSON**  
CORRECTIONVILLE

**MATTHEW A. UNG**  
SIOUX CITY

**FINANCE/BUDGET DIRECTOR**  
RYAN ERICSON

**ADMINISTRATIVE ASSISTANT**  
KAREN JAMES

**EXECUTIVE SECRETARY/ PUBLIC BIDDER**  
HEATHER SATTERWHITE

March 31, 2026

Iowa Department of Health & Human Services  
Lucas Building  
321 East 12<sup>th</sup> Street  
Des Moines, IA 50319

To Whom It May Concern:

The Woodbury County Board of Supervisors would like to voice our support and offer a letter of commitment to Community Action Agency of Siouxland.

Community Action Agency of Siouxland (CAAS) is a private, non-profit organization that has been helping people and changing lives since its incorporation in 1971. CAAS employs approximately 150 individuals and is governed by a local board of directors. CAAS tripartite board consists of 21 members with equal representation from public officials, private interest groups, and elected low-income representatives. CAAS is proud to have over 140 partnerships with local nonprofits, businesses, churches, and other organizations. In the last fiscal year CAAS served over 13,400 individuals. They have a long history of running state and federal programs. They currently offer case management services in Head Start, Early Head Start, Family Development and Self-Sufficiency (FaDSS), Parents as Teachers, Tenant-Based Rental Assistance (TBRA), and Homelessness Prevention. Other programs offered are the Low-Income Home Energy Assistance Program (LIHEAP), Weatherization, George J Williams Memorial Food Pantry, Child and Adult Care Food Program, Woodbury County General Assistance, and Child Care Nurse Consultant.

Our County and Community Action Agency of Siouxland have had a great working relationship and they have always tried to be an effective resource for individuals that need assistance in Woodbury County.

Sincerely,

Mark Nelson  
Chairman  
Woodbury County Board of Supervisors

# HUMAN RESOURCES DEPARTMENT

## MEMORANDUM OF PERSONNEL TRANSACTIONS

**\* PERSONNEL ACTION CODE:**

A - Appointment	R - Reclassification
T - Transfer	E - End of Probation
P - Promotion	S - Separation
D - Demotion	O - Other

**DATE:** April 7, 2026

**TO: WOODBURY COUNTY BOARD OF SUPERVISORS**

NAME	DEPARTMENT	EFFECTIVE DATE	JOB TITLE	SALARY REQUESTED	% INCREASE	*	REMARKS
Brown, David	EMS	03-30-2026	Operations Officer- EMT	\$24.62/hour	0%	O	In-House Job Vacancy Posted on 3/12/2026. Move From PT to FT.
Metzgar, Matthew	Attorney's Office	04-13-2026	Assistant County Attorney	\$132,379.00/year	7%=\$8,390.00/yr	R	Per AFSCME Attorney- Move from Step 9 to Step 10. Anniversary Date 4/18/26.
Javorsky, Tyler	Sheriff's Office	04-13-2026	Court Security Officer	\$28.20/hour	5%=\$1.22/hr	R	Per CWA Civilian - Move from 2 <sup>nd</sup> to 1 <sup>st</sup> Class. Anniversary Date: 4/19/26.
Lynde, Preston	Sheriff's Office	04-13-2026	Deputy	\$37.86/hour	6%=\$2.31/hr	R	Per CWA Deputy- Move from 1 <sup>st</sup> Class to Senior. Anniversary Date: 4/19/26.
Eickholt, Brent	Sheriff's Office	07-31-2026	Civilian Jailer			S	Retired

**APPROVED BY BOARD DATE:** \_\_\_\_\_

**MELISSA THOMAS, HR DIRECTOR:** Melissa Thomas, 4/7/2026

**HUMAN RESOURCES DEPARTMENT**

**WOODBURY COUNTY, IOWA**

**DATE: April 7, 2026**

**AUTHORIZATION TO INITIATE HIRING PROCESS**

<b>DEPARTMENT</b>	<b>POSITION</b>	<b>ENTRY LEVEL</b>	<b>APPROVED</b>	<b>DISAPPROVED</b>
Sheriff's Office	Clerk III	AFSCME Courthouse: \$24.01/hour		

\_\_\_\_\_  
Chairman, Board of Supervisors

**WOODBURY COUNTY BOARD OF SUPERVISORS AGENDA ITEM(S) REQUEST FORM**

Date: 04/02/2026 Weekly Agenda Date: 04/07/2026

**ELECTED OFFICIAL / DEPARTMENT HEAD / CITIZEN:** Jered Jepsen, County Weed Commissioner

**WORDING FOR AGENDA ITEM:**

Consideration of annual weed destruction order

**ACTION REQUIRED:**

Approve Ordinance

Approve Resolution

Approve Motion

Public Hearing

Other: Informational

Attachments

**EXECUTIVE SUMMARY:**

Annually request to approved a weed destruction order at the recommendation of the County Weed Commissioner.

**BACKGROUND:**

According to Chapter 317 of the Code of Iowa, annually the Board of Supervisors must prescribe and order a program of weed destruction. This order will be published in official county newspapers to make landowners aware of their responsibility.

**FINANCIAL IMPACT:**

Publication fees run approximately \$200 per year.

**IF THERE IS A CONTRACT INVOLVED IN THE AGENDA ITEM, HAS THE CONTRACT BEEN SUBMITTED AT LEAST ONE WEEK PRIOR AND ANSWERED WITH A REVIEW BY THE COUNTY ATTORNEY'S OFFICE?**

Yes  No

**RECOMMENDATION:**

Approval of the weed destruction order.

**ACTION REQUIRED / PROPOSED MOTION:**

Motion to approve the Resolution for the Weed Destruction order for 2026.

WOODBURY COUNTY, IOWA  
RESOLUTION NO. \_\_\_\_\_  
WEED DESTRUCTION ORDER

WHEREAS, it is the responsibility of each of Iowa County's Board of Supervisors to enforce the provisions of Chapter 317 of the Code of Iowa as amended with regard to the destruction of weeds, and

WHEREAS, under Chapter 317 of the Code of Iowa as amended each county Board of Supervisors must prescribe and order a program of weed destruction to be followed by landowners, tenants, and other persons in possession or control of land, and

WHEREAS, it has been determined by the Woodbury County Board of Supervisors that a program of weed destruction for the year 2026 is necessary,

NOW THEREFORE,

BE IT RESOLVED by the Board of Supervisors of Woodbury County, Iowa that each landowner, tenant or other person in possession or control of private land shall on or before the dates stated below, destroy the below-listed noxious weeds on their land by spraying them with a suitable herbicide in a strength sufficient to kill such weeds.

1. May 1, 2026 – for Palmer amaranth annual.
2. May 4, 2026 - for musk, thistle, sow thistle, bull thistle, leafy spurge, perennial pepper grass, sour dock perennial, smooth dock perennial, and sheep sorrel perennial.
3. June 1, 2026 - for Canada thistle, Russian knapweed, buckhorn perennial, wild mustard annual, horse nettle, and teasel biennial.
4. June 8, 2026 - for field bindweed, wild carrot biennial, and quack grass.
5. June 15, 2026 - for butterprint annual, puncture vine annual, and cocklebur annual.
6. July 1, 2026 - for wild sunflower annual and poison hemlock.
7. October 1, 2026 - all thistles in the rosette stage.

BE IT FURTHER RESOLVED AND ORDERED that any person using county road Right-of-Way for haying or grazing are responsible for following the labeled restrictions listed on the following products used by Woodbury County Weed Commissioner: Grazon P&D, Streamline, Perspective, Method 240SL, Milestone, and MSN 60.

BE IT FURTHER RESOLVED AND ORDERED that all weeds on county trunk and local roads and between the fence lines of such roads, whether they be noxious weeds or other weeds, shall be eradicated or otherwise destroyed, to prevent seed production, by the owner of the land adjoining the road on or before June 5, 2026.

BE IT FURTHER RESOLVED that weeds that are not destroyed in compliance with the above order may be destroyed by the Weed Commissioner, and the costs of destruction by the Weed Commissioner, including the cost of serving notice, plus a penalty of twenty-five percent of total costs shall be assessed against the property upon which the weeds were destroyed, in the case of private lands, or against the adjoining land, in the case of weeds on county roads. Landowners are to contact Weed Commissioner and notify him if there are areas that should not be sprayed with herbicides.

SO RESOLVED this 7th day of April, 2026

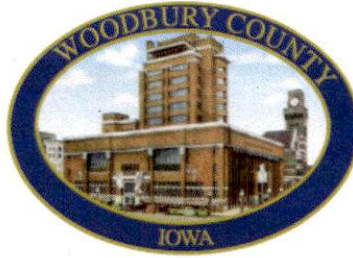
WOODBURY COUNTY BOARD OF SUPERVISORS

\_\_\_\_\_  
Mark Nelson, Chairperson

ATTEST:

\_\_\_\_\_  
Michelle K. Skaff  
Woodbury County Auditor

**Office Of The  
AUDITOR/RECORDER  
Woodbury County**  
Michelle K. Skaff, Ph.D.  
Auditor/Recorder/  
Commissioner of Elections



Courthouse – Room 103  
620 Douglas  
Sioux City, IA 51101  
Phone: (712) 279-6702  
Fax (712) 279-6629  
miskaff@woodburycountyiowa.gov

**AUDITOR'S QUARTERLY REPORT**

January 1, 2026 / March 31, 2026

Michelle K. Skaff, Woodbury County Auditor/Recorder

Payroll Taxes

Beginning Cash Balance	January 1, 2026		
Payroll Taxes		408,168.58	
Other		(873.11)	
Total Beginning Balance			407,295.47
Receipts:			
Payroll Taxes		3,100,333.84	
Interest		2,986.11	
Other			
Total Receipts			3,103,319.95
Total Resources			<b>3,510,615.42</b>
Disbursements:			
Payroll Taxes		3,109,862.10	
Interest Paid to Treasurer		3,173.03	
Other			
Total Disbursements			<b>3,113,035.13</b>
Ending Cash Balance	March 31, 2026		
Payroll Taxes		398,640.32	
Other		(1,060.03)	
Total Ending Balance			<b>397,580.29</b>

I, Michelle K. Skaff, County Auditor/Recorder of Woodbury County, Iowa, hereby certify the above to be a true and correct statement of the Receipts and Disbursements of the office of County Auditor for the 3rd Quarter ending 03/31/26.

  
Michelle K. Skaff, County Auditor/Recorder

**NOTICE OF APPOINTMENT TO FILL A VACANCY**

TO: Michelle K. Skaff, Woodbury County Auditor/Recorder & Commissioner of Elections

From: Sioux City Community School District School/City/Township/  
Seaniece L. Heilman, School Board Secretary Extension/Soil & Water  
Secretary/Clerk  
April 2, 2026 Date

This is to notify you and the Board of Supervisors of Woodbury County that the following person has been appointed until the next regular/general election:

For the office of Board Director  
Name Dr. Christian Supiot  
Address 3121 Orleans Ave  
City/Zip Sioux City 51106  
Date of appointment April 1, 2026

This appointment is to fill the office previously held by:

Jan J. George  
(Name of previous official)

RETURN TO: Michelle K. Skaff  
Woodbury County Commissioner of Elections  
620 Douglas St, Rm 103  
Sioux City, IA 51101

**WOODBURY COUNTY BOARD OF SUPERVISORS AGENDA ITEM(S) REQUEST FORM**

Date: 04/02/26 Weekly Agenda Date: 04/07/26

**ELECTED OFFICIAL / DEPARTMENT HEAD / CITIZEN:** County Auditor - Michelle Skaff

**WORDING FOR AGENDA ITEM:**

Consideration and approval for liquor license for Anthon Golf Course, Anthon, IA

**ACTION REQUIRED:**

Approve Ordinance       Approve Resolution       Approve Motion   
Public Hearing       Other: Informational       Attachments

**EXECUTIVE SUMMARY:**

n/a

**BACKGROUND:**

n/a

**FINANCIAL IMPACT:**

Unknown at this time

**IF THERE IS A CONTRACT INVOLVED IN THE AGENDA ITEM, HAS THE CONTRACT BEEN SUBMITTED AT LEAST ONE WEEK PRIOR AND ANSWERED WITH A REVIEW BY THE COUNTY ATTORNEY'S OFFICE?**

Yes       No

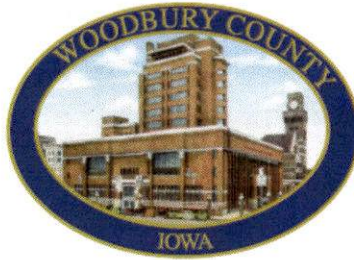
**RECOMMENDATION:**

Approve Motion

**ACTION REQUIRED / PROPOSED MOTION:**

Motion to approve an application for a 12-month Class C Retail Alcohol License, for Anthon Golf Course, effective 04/02/26 through 04/01/27.

**Office Of The  
AUDITOR/RECORDER  
Woodbury County**  
Michelle K. Skaff, Ph.D.  
Auditor/Recorder/  
Commissioner of Elections



Courthouse – Room 103  
620 Douglas  
Sioux City, IA 51101  
Phone: (712) 279-6702  
Fax (712) 279-6629  
[miskaff@woodburycountyiowa.gov](mailto:miskaff@woodburycountyiowa.gov)

To: Board of Supervisors

From: Michelle K Skaff, Auditor & Recorder

Date: April 3, 2026

Subject: Liquor License Application for the Anthon Golf Course, Anthon, Iowa.

Please approve and receive for signature, an applicaton for a 12-month, Class C Retail Alcohol License (LC) (Commercial), with Outdoor Service privileges, for the Anthon Golf Course, Anthon, Iowa. The license would be effective 04/02/26 through 04/01/27.

**CLASS "C" RETAIL ALCOHOL LICENSE APPLICATION**

**Business Information**

Name of Legal Entity: ANTHON GOLF CLUB INC

FEIN: XX-XXX6936

Business Type: Corporation

This business is registered with the Secretary of State.

Business Number of Secretary of State: 167412

**Premises Information**

Premises DBA: 2236 HIGHWAY 31

Premises Address: 2236 HIGHWAY 31 ANTHON IA 51004-8185

Premises Type: Golf Course

Number of Floors: 1

Control of Premises: Own

Is your premises equipped with at least one adequate, conveniently located indoor or outdoor toilet facility for use by patrons?

Yes

Does your premises conform to all local and state health, fire and building laws and regulations?

Yes

Is your establishment equipped with tables and seats to accommodate a minimum of 25?

Yes

**License Information**

Effective Date: 02-Apr-2026

Length of License Requested: 12MONTH

**Privilege(s) Requested**

---

Outdoor Service - Allows the selling/serving of alcoholic beverages by the license/permit in a designated, adjacent outdoor area.

Provided description of the Outdoor Service Area:

Golf Course

## Endorsements

Local Authority: Woodbury County

Dramshop Company: ILLINOIS CASUALTY CO

## Ownership Information

Type	Name	ID Type	ID	DOB	Phone	Address	Percentage
Company	ANTHON GOLF CLUB INC	FEIN	XX-XXX6936			HIGHWAY 31 SOUTH ANTHON IA 51004	100.00
Individual	MAGUIRE, PATRICK	SSN	***-**-2602	10-Sep-19 58		3322 245TH STREET ANTHON IA 51004	0.00

## Criminal History Details

Has anyone listed on the Ownership page been charged or convicted of a felony offense in Iowa or any other state of the United States?

No

Has anyone listed on the Ownership page been convicted of any violation of any state, county, city, federal or foreign law? For traffic violations, only include those that are drug or alcohol related.

No

## Criminal Violations

## Contact Information

Contact Name: JULIE JOY

Phone Number: (712) 870-1644

Email Address: anthongolfcourse@gmail.com

Address: PO BOX 277 2238 HWY 31 ANTHON IA 51004-0277

## Attestation Information

Attestation Name: PATRICK MAGUIRE

Attestation Date: 02-Apr-2026

**WOODBURY COUNTY BOARD OF SUPERVISORS AGENDA ITEM(S) REQUEST FORM**

Date: 4/01/2026 Weekly Agenda Date: 4/07/2026

**ELECTED OFFICIAL / DEPARTMENT HEAD / CITIZEN:** Kenny Schmitz

**WORDING FOR AGENDA ITEM:**

Courthouse Freight Elevator Replacement Project- Project addendum & Bid Opening Date Change

**ACTION REQUIRED:**

Approve Ordinance

Approve Resolution

Approve Motion

Public Hearing

Other: Informational

Attachments

**EXECUTIVE SUMMARY:**

CMBA is processing a bid addendum. The Competitive Bid Opening date must be changed.

**BACKGROUND:**

3/31/2026- Board Conducts Public Hearing  
03/10/2026- Board Approves Plans, Specifications, & Form of Contract to be utilized in Competitive Bid Process  
10/21/2025- Board Approves Project Funding- \$300,000 (Unallocated CIP) & \$60,000 (General Basic)  
12/16/2025- Architects & Engineering Contract Approval

**FINANCIAL IMPACT:**

Determined by lowest responsible, responsive bid submission

**IF THERE IS A CONTRACT INVOLVED IN THE AGENDA ITEM, HAS THE CONTRACT BEEN SUBMITTED AT LEAST ONE WEEK PRIOR AND ANSWERED WITH A REVIEW BY THE COUNTY ATTORNEY'S OFFICE?**

Yes  No

**RECOMMENDATION:**

Change original bid opening date from April 7th to April 21st 3:00 pm Board of Supervisors Office Woodbury County Courthouse

**ACTION REQUIRED / PROPOSED MOTION:**

Motion to change original bid opening date from April 7th to April 21st 3:00 pm Board of Supervisors Office Woodbury County Courthouse

**WOODBURY COUNTY BOARD OF SUPERVISORS AGENDA ITEM(S) REQUEST FORM**

Date: 4/1/26 Weekly Agenda Date: 4/7/26

**ELECTED OFFICIAL / DEPARTMENT HEAD / CITIZEN:** Daniel J. Priestley

**WORDING FOR AGENDA ITEM:**

Approval of Resolution to Waive County Building Permit Fees Associated with Repair and Redevelopment of Fire-Damaged Property following the March 28, 2026 fire.

**ACTION REQUIRED:**

Approve Ordinance

Approve Resolution

Approve Motion

Public Hearing

Other: Informational

Attachments

**EXECUTIVE SUMMARY:**

Request Board of Supervisors approval of the attached resolution authorizing the Woodbury County Planning and Zoning Department to waive building permit fees for any unincorporated-area county resident or property owner directly impacted by the March 28, 2026 grass and field fire who is required to obtain a county building permit for repair, reconstruction, or redevelopment on the affected properties.

**BACKGROUND:**

On Saturday, March 28, 2026, Woodbury County experienced a major grass and field fire that originated near Bronson and rapidly spread across approximately 3,500 acres in rural areas near Lawton, Bronson, and Merville. The fire destroyed homes, damaged or destroyed outbuildings, killed multiple livestock and family pets, damaged a county bridge, and caused significant disruption to residents and infrastructure. Many affected property owners in the unincorporated areas will require building permits from Planning and Zoning for repairs and redevelopment.

**FINANCIAL IMPACT:**

0

**IF THERE IS A CONTRACT INVOLVED IN THE AGENDA ITEM, HAS THE CONTRACT BEEN SUBMITTED AT LEAST ONE WEEK PRIOR AND ANSWERED WITH A REVIEW BY THE COUNTY ATTORNEY'S OFFICE?**

Yes  No

**RECOMMENDATION:**

Planning and Zoning staff recommends approval of the attached resolution to support timely repair and redevelopment of properties damaged by the March 28, 2026 fire event, consistent with the Board's previous actions to assist residents following flood events.

**ACTION REQUIRED / PROPOSED MOTION:**

Approval of Resolution to Waive County Building Permit Fees Associated with Repair and Redevelopment of Fire-Damaged Property following the March 28, 2026 fire.

**WOODBURY COUNTY, IOWA**  
**RESOLUTION NO. \_\_\_\_\_**

**RESOLUTION TO WAIVE COUNTY FEES ASSOCIATED WITH REPAIR AND REDEVELOPMENT OF FIRE-DAMAGED PROPERTY**

**WHEREAS**, Woodbury County suffered a major grass and field fire on March 28, 2026, that rapidly spread across approximately 3,500 acres in rural areas near Bronson, Lawton, and Merville, causing significant damage to private property, destruction of homes, damage or destruction of outbuildings, loss of livestock and family pets, and significant disruption to residents and infrastructure within the affected area; and

**WHEREAS**, the Woodbury County Board of Supervisors recognizes the significant hardship imposed on property owners and residents directly impacted by this fire event; and

**WHEREAS**, building permits are required for repair, reconstruction, and redevelopment of fire-damaged structures and properties in the unincorporated areas of Woodbury County; and

**WHEREAS**, the requirement for a permit cannot be waived, but the Board of Supervisors may opt to waive the fees normally associated with permits issued by the Woodbury County Community and Economic Development (Planning and Zoning) department in the unincorporated areas; and

**IT IS HEREBY RESOLVED** by the Board of Supervisors of Woodbury County, Iowa, as follows:

1. The Woodbury County Board of Supervisors fully supports the repair and redevelopment of property damaged by the March 28, 2026 grass and field fire.
2. The Woodbury County Planning and Zoning department is hereby authorized to waive building permit fees for any unincorporated area county resident or property owner that was directly impacted by the March 28, 2026 fire event and is required to obtain a county building permit for repair, reconstruction, or redevelopment of the affected property.

**SO RESOLVED** this \_\_\_\_\_ day of \_\_\_\_\_, 2026.

**THE WOODBURY COUNTY, IOWA BOARD OF SUPERVISORS**

---

Mark Nelson, Chairman

---

David Dietrich, Vice-Chairman

---

Daniel Bittinger II

---

Kent Carper

---

Matthew Ung

Attest:

---

Michelle K. Skaff, Woodbury County Auditor

**WOODBURY COUNTY BOARD OF SUPERVISORS AGENDA ITEM(S) REQUEST FORM**

Date: 4-2-2026 Weekly Agenda Date: 4-7-2026

**ELECTED OFFICIAL / DEPARTMENT HEAD / CITIZEN:** Ryan Ericson

**WORDING FOR AGENDA ITEM:**

Multi-functional copier/printer maintenance agreement for Medical Examiner

**ACTION REQUIRED:**

- Approve Ordinance       Approve Resolution       Approve Motion   
Public Hearing       Other: Informational       Attachments

**EXECUTIVE SUMMARY:**

Maintenance agreement for printer/copier for the Medical Examiner's department

**BACKGROUND:**

This machine was previously in use for Mental Health at the Tri-View building. Mental Health has moved to the Courthouse and did not need to move the machine. The machine is currently available to be used for the Medical Examiner's needs.

**FINANCIAL IMPACT:**

\$400.20 per Quarter

**IF THERE IS A CONTRACT INVOLVED IN THE AGENDA ITEM, HAS THE CONTRACT BEEN SUBMITTED AT LEAST ONE WEEK PRIOR AND ANSWERED WITH A REVIEW BY THE COUNTY ATTORNEY'S OFFICE?**

Yes       No

**RECOMMENDATION:**

Approve and sign the agreement

**ACTION REQUIRED / PROPOSED MOTION:**

Approve the Maintenance Agreement



# MAINTENANCE AGREEMENT

3745 Louisiana Ave S, St Louis Park, MN 55426  
952-925-6800 \*Fax 952-925-6801

<b>B I L L  T O</b>	<b>Company</b> Woodbury County-Medical Examiner		<b>Customer #</b> OS-WC035		<b>S H I P  T O</b>	<b>Company</b> Woodbury County-Medical Examiner		<b>Customer #</b> OS-WC035							
	<b>Address</b> 620 Douglas St Ste 104					<b>Address</b> 620 Douglas St Ste 104									
	<b>City</b> Sioux City		<b>State</b> IA	<b>Zip</b> 51101-1248		<b>City</b> Sioux City		<b>State</b> IA	<b>Zip</b> 51101-1248						
	<b>Contact</b> Ryan Ericson			<b>Phone</b> 712-279-6459			<b>Contact</b> Ryan Ericson			<b>Phone</b> 712-279-6459					
	<b>Email address</b> <a href="mailto:ericson@woodburycountyiowa.gov">ericson@woodburycountyiowa.gov</a>					<b>Mobile Phone</b>				<b>Email address</b> <a href="mailto:ericson@woodburycountyiowa.gov">ericson@woodburycountyiowa.gov</a>				<b>Mobile Phone</b>	

Multi-Functional Copier / Printer
  Managed Print Services
  Mail Machine

**CONTRACT TERM:** \_\_\_\_\_  Other \_\_\_\_\_

**EFFECTIVE DATE:** \_\_\_\_\_ Note that the effective date is the same as the Install Date, unless otherwise noted: \_\_\_\_\_
  **New**
 **Renewal**
 **Add to Existing Contract**

MAKE/MODEL	DESCRIPTION	SERIAL NUMBER	ID	BEGIN METER
Lanier MPC5503		E183MC10188	B27840	

**Please list additional equipment on attached Schedule A**

<b>Base Frequency</b>	Quarterly	<b>Overage Frequency</b>	Quarterly	<b>Base Charge</b>	\$400.20
-----------------------	-----------	--------------------------	-----------	--------------------	----------

<b>B/W Covered Impressions</b>	6,000	<b>B/W Overage Charge</b>	\$ 0.0165	<b>Meter Collection Method</b>
<b>Color Covered Impressions</b>	3,000	<b>Color Overage Charge</b>	\$ 0.1004	

<b>Xerox Production</b>	Mono	Color	Large Color	Banner	All Four Rates Are Required
-------------------------	------	-------	-------------	--------	-----------------------------

**Additional Charge** \$ \_\_\_\_\_ **For** \_\_\_\_\_

<b>Supplies Included</b>	Yes	<b>Black Toner</b>	Yes	<b>Color Toner</b>	Yes	<b>Staples Included</b>	No
--------------------------	-----	--------------------	-----	--------------------	-----	-------------------------	----

<b>Meter Contact</b> Ryan Ericson	<b>Phone (Required)</b> 712-279-6459	<b>E-mail Address (Required)</b> <a href="mailto:ericson@woodburycountyiowa.gov">ericson@woodburycountyiowa.gov</a>	<b>Fax</b>
--------------------------------------	---	--	------------

**Enable Canon Cloud Backup Service** Qty \_\_\_\_\_ \$4.95 per device monthly for Canon generation three or newer devices

**Special Instructions:**

Please carefully review the Terms and Conditions on our website, <https://info.loffler.com/loffler-terms-and-conditions>, and provide a customer signature on the following page. Version 04212025.



**WOODBURY COUNTY BOARD OF SUPERVISORS AGENDA ITEM(S) REQUEST FORM**

Date: 4-2-2026 Weekly Agenda Date: 4-7-2026

**ELECTED OFFICIAL / DEPARTMENT HEAD / CITIZEN:** Ryan Ericson

**WORDING FOR AGENDA ITEM:**

Elk Creek Road Construction Payment Authorization

**ACTION REQUIRED:**

Approve Ordinance

Approve Resolution

Approve Motion

Public Hearing

Other: Informational

Attachments

**EXECUTIVE SUMMARY:**

Reimbursement to the City of Sioux City for Elk Creek Road Project

**BACKGROUND:**

On 12-20-2022, the County and the City of Sioux City amended a Letter of Understanding in regard to the Elk Creek Road Project. The amendment states that the City and the County shall share the costs of the paving equally and the City and the County shall share the intersection costs.

**FINANCIAL IMPACT:**

\$713,308.74

**IF THERE IS A CONTRACT INVOLVED IN THE AGENDA ITEM, HAS THE CONTRACT BEEN SUBMITTED AT LEAST ONE WEEK PRIOR AND ANSWERED WITH A REVIEW BY THE COUNTY ATTORNEY'S OFFICE?**

Yes  No

**RECOMMENDATION:**

Approve the payment and make a resolution to transfer funds from General Basic to Secondary Roads

**ACTION REQUIRED / PROPOSED MOTION:**

- 1 - Approve payment of \$713,308.74 for the County's share of Elk Creek Road Project to the City of Sioux City
- 2 - Approve resolution to transfer funds (\$714,000) from General Basic to Secondary Roads

**FIRST AMENDMENT TO LETTER OF UNDERSTANDING  
(CITY OF SIOUX CITY AND WOODBURY COUNTY)**

THIS FIRST AMENDMENT TO A LETTER OF UNDERSTANDING made on this 19<sup>th</sup> day of December 2022, by and between the City of Sioux City, (“City”) and Woodbury County (“County”)

***R E C I T A L S***

WHEREAS, on February 16, 2021, the City and County entered into a Letter of Understanding to set out various commitments related to the construction of the proposed Woodbury County Jail Site Improvements Project, the redevelopment of the Law Enforcement Center location at 407 7<sup>th</sup> Street, and the Elk Creek Road development; and

WHEREAS, the City and County wish to proceed with the paving of Elk Creek Road as considered in the Letter of understanding; and

WHEREAS a First Amendment to the Letter of Understanding is necessary to approve a plan for the shared costs and responsibilities of the paving of Elk Creek Road; and

WHEREAS all other terms of the Letter of Understanding would remain in effect; and

WHEREAS, both parties wish to amend said Letter of Understanding;

NOW, THEREFORE, IT IS AGREED that the Letter of Understanding is amended as follows:

1. Paragraph (7) is replaced in its entirety and now reads as follows:  
“The City shall pave the section of Elk Creek Road directly adjacent to the Elk Creek Residential Subdivision, a distance of approximately 1,800 feet. Paving will be an urban section with curb and gutter and include storm sewer and intakes. The Developer shall reimburse the City for one-third of the paving, storm sewer, and directly related construction costs. The other two-thirds of the paving, storm sewer, and directly related construction costs shall be paid by the City and County. The Developer shall pay for any sanitary sewer and water main utility costs associated with the project.”
2. A new paragraph (8) is added and reads as follows:  
“The County shall construct the section of Elk Creek Road from the Elk Creek Residential Subdivision north to the intersection of Elk Creek Road and Old Lakeport Road, a distance of approximately 1,850 feet. The City and County shall share the costs of the paving equally which shall be constructed as a 24-foot rural design. The County shall also construct an intersection at Elk Creek Road and Old Lakeport. The City and County shall share the intersection costs, allocating the part of the intersection inside the City corporate limits to the City, and the part of the intersection outside the City corporate limits to the County. The City shall pay the costs of a water line. Construction shall take place per a mutually agreed upon schedule.”
3. A new paragraph (9) is added and reads as follows:  
“At the time the Elk Creek Road and Old Lakeport Road intersection is reconstructed the County, if requested by the City, will also construct a sidewalk/trail along Old Lakeport Road from Singing Hills Boulevard to the intersection of Old Lakeport Road and Elk Creek Road. The City shall pay for the costs of the sidewalk/trail if constructed.”

[SIGNATURE PAGES TO FOLLOW]

CITY OF SIOUX CITY, IOWA

By: \_\_\_\_\_  
Robert E. Scott, Mayor

Attest: \_\_\_\_\_  
Lisa L. McCardle, City Clerk

STATE OF IOWA            )  
                                      :  
COUNTY OF WOODBURY )

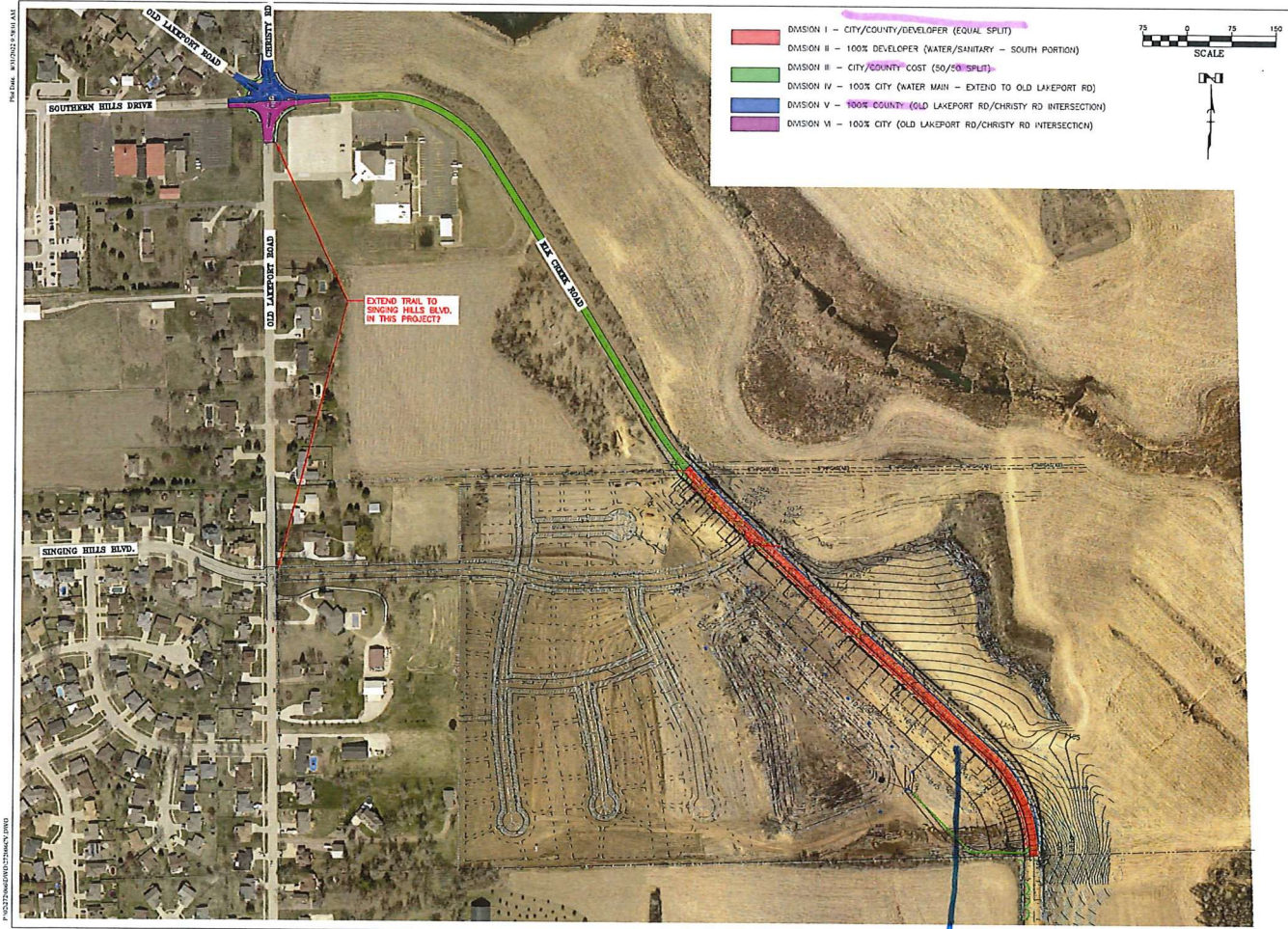
On this \_\_\_\_ day of \_\_\_\_\_, 2022, before me the undersigned, a Notary Public in and for Woodbury County, personally appeared Robert E. Scott and Lisa L. McCardle, to me personally known, who, being by me duly sworn, did say that they are Mayor and City Clerk, respectively, of the City of Sioux City, Iowa; that the seal affixed hereto is the seal of the City of Sioux City, Iowa; that the said instrument was signed and sealed on behalf of said City of Sioux City, Iowa, and that the said Mayor and City Clerk acknowledged the execution of said instrument to be the voluntary act and deed of said City of Sioux City, Iowa, by it and by them voluntarily executed.

\_\_\_\_\_  
NOTARY PUBLIC in and for said COUNTY and STATE

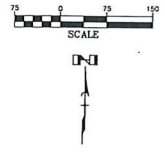


**Elk Creek Road Construction**  
**Sioux City, Iowa**  
**Engineer's Opinion of Probable Costs**  
**December 7, 2022**

Item No.	Item Code	No. of Units	Description	Unit Price	Total
<b>Division I - Roadway &amp; Storm Sewer (Developer, City, County - Equal Split)</b>					
1	2010-D-3	538 C.Y.	Topsoil, Off-Site, 4"	\$ 39.00	\$ 20,982.00
2	2010-E	2662 C.Y.	Excavation, Class 10 (ROW only)	\$ 10.00	\$ 26,620.00
3	2010-G	7468 S.Y.	Subgrade Preparation, 12"	\$ 5.50	\$ 41,074.00
4	2010-999-A	114 Tons	Granular Surfacing	\$ 66.00	\$ 7,524.00
5	4020-A-1	1054 L.F.	Storm Sewer, Trenched, SS, 15"	\$ 66.00	\$ 69,564.00
6	4020-A-1	78 L.F.	Storm Sewer, Trenched, SS, 18"	\$ 72.00	\$ 5,616.00
7	4020-999-A	318 L.F.	Storm Sewer, Trenched, HPPP, 15", Install Only	\$ 33.00	\$ 10,494.00
8	4020-999-B	3 Ea.	Connect to Existing Intake	\$ 1,650.00	\$ 4,950.00
9	4020-999-C	1 Ea.	Concrete Pipe Support	\$ 1,100.00	\$ 1,100.00
10	6010-A	1 Ea.	Storm Manhole, Nyloplast Basin (install only)	\$ 2,750.00	\$ 2,750.00
11	6010-B-0	6 Ea.	Intake Type, SW-501	\$ 5,500.00	\$ 33,000.00
12	6010-B-0	2 Ea.	Intake Type, SW-505	\$ 6,600.00	\$ 13,200.00
13	6010-B-0	2 Ea.	Intake Type, SW-509	\$ 7,700.00	\$ 15,400.00
14	6010-B-0	1 Ea.	Intake Type, SW-512	\$ 3,850.00	\$ 3,850.00
15	6010-999-A	1 Ea.	Storm Manhole, SW-401, 48", Base, Ring and Cover & External Seal	\$ 3,300.00	\$ 3,300.00
16	6010-999-B	5.0 V.F.	Storm Manhole, SW-401, 48"	\$ 440.00	\$ 2,200.00
17	7010-A	6288 S.Y.	Pavement, PCC, 7"	\$ 60.00	\$ 377,280.00
18	7030-E	148 S.F.	Sidewalk, PCC, 6"	\$ 12.00	\$ 1,776.00
19	7030-G	10 S.F.	Detectable Warnings	\$ 50.00	\$ 500.00
20	8030-A	1 L.S.	Temporary Traffic Control	\$ 3,000.00	\$ 3,000.00
21	9010-A	1 Ac.	Conventional Seeding, Fertilizing, and Mulching, Temporary	\$ 5,500.00	\$ 5,500.00
22	9010-B	1 Ac.	Hydraulic Seeding, Fertilizing, and Hydromulching, Permanent	\$ 6,600.00	\$ 6,600.00
23	9040-A-2	1 L.S.	SWPPP Management	\$ 2,200.00	\$ 2,200.00
24	9040-F-1	600 L.F.	Wattle 9", Furnish, Install, Maintain and Remove	\$ 5.50	\$ 3,300.00
25	9040-N-1	1800 L.F.	Silt Fence, Furnish, Install, Maintain and Remove	\$ 5.50	\$ 9,900.00
26	9040-999-A	1 L.S.	Erosion Control	\$ 5,500.00	\$ 5,500.00
27	11,010-A	1 L.S.	Construction Survey	\$ 16,000.00	\$ 16,000.00
28	11,020-A	1 L.S.	Mobilization	\$ 60,000.00	\$ 60,000.00
<b>Division I Total</b>					<b>\$ 753,180.00</b>
<b>Division II - Sanitary Sewer &amp; Water Main (100% Developer)</b>					
29	4010-C-1	1681 L.F.	Sanitary Low Pressure Force Main, Trenched, HDPE, 2"	\$ 42.00	\$ 70,602.00
30	4010-999-A	30 Ea.	Sanitary Sewer Service Stub, Trenched, HDPE, 1.25"	\$ 1,320.00	\$ 39,600.00
31	4010-999-B	2 Ea.	Connect to Existing Low Pressure Force Main	\$ 1,100.00	\$ 2,200.00
32	4010-999-C	2 Ea.	Sanitary Sewer Cleanout	\$ 1,100.00	\$ 2,200.00
33	5010-A-1	351 L.F.	Water Main, Trenched, 8"	\$ 60.00	\$ 21,060.00
34	5010-A-1	60 L.F.	Water Main, Restrained Joint, Trenched, 8"	\$ 83.00	\$ 4,980.00
35	5010-C-1	5 Ea.	Fitting, Tee, DIP, 8"x6"	\$ 825.00	\$ 4,125.00
36	5010-C-1	2 Ea.	Fitting, Cap, DIP, 8"	\$ 825.00	\$ 1,650.00
37	5010-C-1	3 Ea.	Fitting, DIP, 11.25° Bend, 8"	\$ 825.00	\$ 2,475.00
38	5010-C-1	8 Ea.	Fitting, DIP, 45° Bend, 8"	\$ 825.00	\$ 6,600.00
39	5010-C-1	2 Ea.	Fitting, DIP, 12"x8" Reducer	\$ 1,100.00	\$ 2,200.00
40	5010-999-A	1360 L.F.	Water Main, Trenched, PVC C900, 8" (install only)	\$ 30.00	\$ 40,800.00
41	5010-999-B	2 Ea.	Connect to Existing Water Main	\$ 1,650.00	\$ 3,300.00
42	5020-A	2 Ea.	Valve, Gate Valve/Box, 8" (install only)	\$ 1,100.00	\$ 2,200.00
43	5020-A	1 Ea.	Valve, Gate Valve/Box, 12" (install only)	\$ 1,320.00	\$ 1,320.00
44	5020-C	1 Ea.	Alternate Fire Hydrant Assembly	\$ 5,500.00	\$ 5,500.00
45	5020-C	2 Ea.	Fire Hydrant Assembly	\$ 6,600.00	\$ 13,200.00
46	5020-C	2 Ea.	Fire Hydrant Assembly (install only)	\$ 2,750.00	\$ 5,500.00
47	5020-E	1 Ea.	Flushing Device, Blowoff	\$ 1,650.00	\$ 1,650.00
48	5020-E	1 Ea.	Flushing Device, Blowoff w/1" Corp. Stop	\$ 1,650.00	\$ 1,650.00
49	5020-999-A	1 Ea.	Fire Hydrant Extension, 6"	\$ 825.00	\$ 825.00
50	5020-999-A	1 Ea.	Fire Hydrant Extension, 12"	\$ 1,100.00	\$ 1,100.00
51	11,020-A	1 L.S.	Mobilization	\$ 18,000.00	\$ 18,000.00
52	SP-1	84 L.F.	Electrical Conduit, Trenched, PVC, 4"	\$ 30.00	\$ 2,520.00
<b>Division II Total</b>					<b>\$ 255,257.00</b>
<b>Divisions I &amp; II Total</b>					<b>\$ 1,008,437.00</b>



- DIVISION I - CITY/COUNTY/DEVELOPER (EQUAL SPLIT)
- DIVISION II - 100% DEVELOPER (WATER/SANITARY - SOUTH PORTION)
- DIVISION III - CITY/COUNTY COST (50/50 SPLIT)
- DIVISION IV - 100% CITY (WATER MAIN - EXTEND TO OLD LAKEPORT RD)
- DIVISION V - 100% COUNTY (OLD LAKEPORT RD/CHRISTY RD INTERSECTION)
- DIVISION VI - 100% CITY (OLD LAKEPORT RD/CHRISTY RD INTERSECTON)



Plot Date: 8/10/2022 4:58:15 AM  
 P:\2022\8460\8460\27\DWG\C01.DWG

<b>PRELIMINARY</b> <small>FOR REVIEW ONLY</small>	<small>OVERVIEW PLAN          COST ESTIMATE DIVISION          RAI/2022</small>
<small>Project Manager: B. WELLS          Designer: K. MULLINIX          Project Number: 27266          Phone: (515) 266-1554</small>	<b>ELLY CREEK ROAD          CONSTRUCTION          SIOUX CITY, IOWA</b>
<b>DGR</b> <small>ENGINEERING</small>	Sheet <b>C.01</b>

↓ 200,000



**ELK CREEK ROAD CONSTRUCTION PROJECT  
(OLD LAKEPORT ROAD TO NORTH OF SINGING HILLS BOULEVARD)**

CITY PROJECT # 7376-719-377

COUNTY PROJECT # L-P ELK CREEK—73—97

**Woodbury County Share (50%  
of Division I + Division II)**

Line Number	Item ID	Description	Supplemental Description	Unit	Unit Price	QTY	Extension
10	2010-C	Clearing & Grubbing		Units	\$ 56.00	55.000	\$ 3,080.00
20	2010-D-3	Topsoil, Off-Site, 4"		CY	\$ 55.00	252.500	\$ 13,887.50
30	2010-E	Excavation, Class 10		CY	\$ 9.50	431.500	\$ 4,099.25
40	2010-E	Excavation, Class 10 (Waste)		CY	\$ 11.00	2867.000	\$ 31,537.00
50	2010-G	Subgrade Preparation, 12"		SY	\$ 2.00	3245.484	\$ 6,490.97
60	2010-G	Subgrade Preparation, 24"		SY	\$ 3.00	1593.334	\$ 4,780.00
70	2010-999-A	Modified Subbase		CY	\$ 77.00	1307.677	\$ 100,691.09
80	4020-A-1	Storm Sewer, Trenched, Class III RCP, 15"		LF	\$ 77.35	671.259	\$ 51,921.88
90	4020-D	Removal of Storm Sewer, <30"		LF	\$ 9.50	48.000	\$ 456.00
100	5010-A-1	Water Main, Trenched, Restrained Joint, 8"		LF	\$ 82.94	0.000	\$ -
110	5010-A-1	Water Main, Trenched, 12"		LF	\$ 78.75	0.000	\$ -
120	5010-A-1	Water Main, Trenched, Restrained Joint, 12"		LF	\$ 127.65	0.000	\$ -
130	5010-A-1	Water Main, Trenched, Restrained Joint, 16"		LF	\$ 197.00	0.000	\$ -
140	5010-C-1	Fitting, Tee, DIP, 8"x8"		EA	\$ 850.00	0.000	\$ -
150	5010-C-1	Fitting, Tee, DIP, 12"x6"		EA	\$ 1,010.00	0.000	\$ -
160	5010-C-1	Fitting, Tee, DIP, 12"x12"		EA	\$ 1,394.50	0.000	\$ -
170	5010-C-1	Fitting, Tee, DIP, 16"x6"		EA	\$ 1,715.00	0.000	\$ -
180	5010-C-1	Fitting, Tee, DIP, 16"x16"		EA	\$ 2,595.00	0.000	\$ -
190	5010-C-1	Fitting, Cap, DIP, 8"		EA	\$ 910.00	0.000	\$ -
200	5010-C-1	Fitting, Cap, DIP, 12"		EA	\$ 1,090.00	0.000	\$ -
210	5010-C-1	Fitting, Cap, DIP, 16"		EA	\$ 1,725.00	0.000	\$ -
220	5010-C-1	Fitting, Bend, DIP, 8" 45 Degree		EA	\$ 600.00	0.000	\$ -
230	5010-C-1	Fitting, Bend, DIP, 12" 45 Degree		EA	\$ 1,233.50	0.000	\$ -
240	5010-C-1	Fitting, Reducer, DIP, 12"x8"		EA	\$ 2,218.00	0.000	\$ -
250	5010-C-1	Fitting, Reducer, DIP, 16"x8"		EA	\$ 2,385.75	0.000	\$ -
260	5010-C-1	Fitting, Reducer, DIP, 16"x12"		EA	\$ 3,040.00	0.000	\$ -
270	5010-999-A	Remove or Abandon Ex. Water Main 16"		LF	\$ 30.45	0.000	\$ -
280	5010-999-B	Connect to Existing Water Main 16"		EA	\$ 1,125.00	0.000	\$ -
290	5020-A	Valve, Gate Valve/Box, 8"		EA	\$ 3,320.00	0.000	\$ -
300	5020-A	Valve, Gate Valve/Box, 12"		EA	\$ 6,020.00	0.000	\$ -
310	5020-A	Valve, Butterfly Valve/Box, 16"		EA	\$ 6,820.00	0.000	\$ -
320	5020-D	Fire Hydrant Assembly		EA	\$ 8,495.00	0.000	\$ -
330	5020-E	Flushing Device, Blowoff		EA	\$ 1,200.00	0.000	\$ -
340	5020-E	Flushing Device, Blowoff w/1" Corp. Stop		EA	\$ 600.00	0.000	\$ -
350	5020-J	Remove Existing Hydrant Assembly		EA	\$ 1,275.00	0.000	\$ -
360	5020-999-A	Fire Hydrant Extension, 6"		EA	\$ 685.00	0.000	\$ -
370	5020-999-B	Fire Hydrant Extension, 12"		EA	\$ 755.00	0.000	\$ -
380	6010-B	Intake Type, SW-501		EA	\$ 3,540.00	1.000	\$ 3,540.00
390	6010-B	Intake Type, SW-502, 48"		EA	\$ 5,923.50	2.000	\$ 11,847.00
400	6010-B	Intake Type, SW-505		EA	\$ 4,573.65	2.000	\$ 9,147.30
410	6010-B	Intake Type, SW-509		EA	\$ 4,435.00	1.000	\$ 4,435.00
420	6010-B	Intake Type, SW-512, 24"		EA	\$ 1,926.00	0.000	\$ -
430	6010-H-2	Remove Storm Intake		EA	\$ 500.00	3.000	\$ 1,500.00

Line Number	Item ID	Description	Supplemental Description	Unit	Unit Price	QTY	Extension
440	6010-999-A	Storm Manhole, SW-401, 48", Base, Ring and Cover & External Seal		EA	\$ 3,963.00	1.000	\$ 3,963.00
450	6010-999-B	Storm Manhole, SW-401, 48"		VF	\$ 394.30	9.000	\$ 3,548.70
460	7010-A	Pavement, PCC, 7"		SY	\$ 50.50	4752.245	\$ 239,988.35
470	7010-A	Median Pavement, PCC, 6"		SY	\$ 75.40	33.600	\$ 2,533.44
480	7010-999-A	Integral Colored PCC Pavement, 6"		SY	\$ 115.85	109.550	\$ 12,691.37
490	7010-999-B	Reinforced Integral Colored PCC Pavement, 6"		SY	\$ 153.65	39.250	\$ 6,030.76
500	7030-A-1	Remove Sidewalk		SF	\$ 0.50	2789.000	\$ 1,394.50
510	7030-E	Sidewalk, PCC, 4"		SF	\$ 6.00	2328.600	\$ 13,971.60
520	7030-E	Sidewalk, PCC, 6"		SF	\$ 6.90	2118.121	\$ 14,615.03
530	7030-G	Detectable Warnings		SF	\$ 45.00	216.000	\$ 9,720.00
540	7030-H-1	Driveway Pavement, PCC, 6"		SY	\$ 61.50	100.678	\$ 6,191.70
550	7030-H-3	Driveway Granular, 6"		Tons	\$ 62.00	9.000	\$ 558.00
560	7030-999-A	Temporary Access Drive		LS	\$ 15,090.00	1.000	\$ 15,090.00
570	7040-H	Pavement Removal, Street/Driveway		SY	\$ 4.00	1125.000	\$ 4,500.00
580	8020-D	Painted Pavement Markings, High Build, Yellow		STA	\$ 143.00	9.650	\$ 1,379.95
590	8020-D	Painted Pavement Markings, High Build, White		STA	\$ 143.00	12.085	\$ 1,728.16
600	8020-M	Grooving for Pavement Markings		STA	\$ 66.00	18.165	\$ 1,198.89
610	8030-A	Temporary Traffic Control		LS	\$ 9,350.00	0.500	\$ 4,675.00
620	8030-999-A	Business Signage		SF	\$ 33.00	6.250	\$ 206.25
630	8040-B	Traffic Signs		SF	\$ 50.00	127.500	\$ 6,375.00
640	8040-999-A	Furnish and Install U-Post		EA	\$ 220.00	10.000	\$ 2,200.00
650	8040-999-B	Furnish and Install Round Steel Post/Anchor		EA	\$ 1,375.00	12.500	\$ 17,187.50
660	9010-A	Conventional Seeding, Fertilizing, and Mulching, Temporary		AC	\$ 1,100.00	0.000	\$ -
670	9010-B	Hydraulic Seeding, Fertilizing, and Hydromulching, Permanent, Type 1		AC	\$ 6,820.00	0.700	\$ 4,774.00
680	9010-B	Hydraulic Seeding, Fertilizing, and Hydromulching, Permanent, Type 2		AC	\$ 6,829.00	1.550	\$ 10,584.95
690	9040-A-2	SWPPP Management		LS	\$ 2,500.00	0.500	\$ 1,250.00
700	9040-F-1	Wattle 9", Furnish, Install, Maintain and Remove		LF	\$ 4.40	20.000	\$ 88.00
710	9040-N-1	Silt Fence, Furnish, Install, Maintain and Remove		LF	\$ 4.40	59.000	\$ 259.60
720	9040-R	Turf Reinforcement Mat, Type 2		SQ	\$ 100.00	0.000	\$ -
730	9040-999-A	Erosion Control		LS	\$ 6,000.00	0.500	\$ 3,000.00
740	11,020-A	Mobilization		LS	\$ 100,000.00	0.500	\$ 50,000.00
750	SP-1	Pavement Surface Correction		SY	\$ 35.00	0.000	\$ -
760	SP-2	Conduit, PVC, Schedule 80, 2"		LF	\$ 13.50	0.000	\$ -
770	SP-3	Conduit, PVC, Schedule 40, 2"		LF	\$ 12.00	0.000	\$ -
780	SP-4	Trench, 30" Deep		LF	\$ 4.25	0.000	\$ -
790	SP-5	Junction Box		EA	\$ 3,750.00	0.000	\$ -
800	7010-108-A-0	Pavement, PCC	Integral Colored PCC Pavement 7-Inch - Standard Broom	SY	\$ 125.60	175.000	\$ 21,980.00
810	2599-9999005	('EACH' ITEM)	Install City Provided Fire Hydrant Assembly	EACH	\$ 4,000.00	0.000	\$ -
820	5010-108-C-1	Fitting	16-inch 22.5 deg	EA	\$ 2,510.40	0.000	\$ -
830	5010-108-C-1	Fitting	16-inch 45 deg	EA	\$ 2,539.75	0.000	\$ -

Line Number	Item ID	Description	Supplemental Description	Unit	Unit Price	QTY	Extension
840	7010-108-G-0	Concrete Median	PCC, 6-inch	SY	\$ 81.00	52.000	\$ 4,212.00
						<b>TOTAL</b>	<b>\$ 713,308.74</b>

**ELK CREEK ROAD CONSTRUCTION PROJECT (OLD LAKEPORT ROAD TO NORTH OF SINGING HILLS BOULEVARD)**

CITY PROJECT # 7376-719-377

COUNTY PROJECT # L-P ELK CREEKCREEK—73—97

City of Sioux City	\$	762,979.97
Woodbury County	\$	713,308.74
<b>Project Total</b>	<b>\$</b>	<b>1,476,288.71</b>

Line No.	Item ID	Description	Supplemental Description	Unit	Orginal QTY	Unit Price	Division I (50/50)		Division II (County)		Division III (CITY)		TOTAL QTY PLACED	FINAL AMOUNT
							QTY	Extension	QTY	Extension	QTY	Extension		
10	2010-C	Clearing & Grubbing		Units	135.200	\$ 56.00	110.000	\$ 6,160.00	\$ -	\$ -	\$ -	110.000	\$ 6,160.00	
20	2010-D-3	Topsoil, Off-Site, 4"		CY	505.000	\$ 55.00	55.000	\$ 3,025.00	225.000	\$ 12,375.00	225.000	\$ 12,375.00	505.000	\$ 27,775.00
30	2010-E	Excavation, Class 10		CY	863.000	\$ 9.50	503.000	\$ 4,778.50	180.000	\$ 1,710.00	180.000	\$ 1,710.00	863.000	\$ 8,198.50
40	2010-E	Excavation, Class 10 (Waste)		CY	6267.000	\$ 11.00	5700.000	\$ 62,700.00	17.000	\$ 187.00	0.000	\$ -	5717.000	\$ 62,887.00
50	2010-G	Subgrade Preparation, 12"		SY	5134.000	\$ 2.00	6068.278	\$ 12,136.56	211.345	\$ 422.69	245.788	\$ 491.58	6525.411	\$ 13,050.82
60	2010-G	Subgrade Preparation, 24"		SY	5134.000	\$ 3.00	3186.667	\$ 9,560.00	\$ -	\$ -	\$ -	\$ -	3186.667	\$ 9,560.00
70	2010-999-A	Modified Subbase		CY	1715.000	\$ 77.00	1059.533	\$ 81,584.04	777.910	\$ 59,899.07	589.780	\$ 45,413.06	2427.223	\$ 186,896.17
80	4020-A-1	Storm Sewer, Trenched, Class III RCP, 15"		LF	906.000	\$ 77.35	\$ -	\$ -	671.259	\$ 51,921.88	264.441	\$ 20,454.51	935.700	\$ 72,376.40
90	4020-D	Removal of Storm Sewer, <30"		LF	131.000	\$ 9.50	\$ -	\$ -	48.000	\$ 456.00	83.000	\$ 788.50	131.000	\$ 1,244.50
100	5010-A-1	Water Main, Trenched, Restrained Joint, 8"		LF	12.000	\$ 82.94	\$ -	\$ -	\$ -	\$ -	12.900	\$ 1,069.93	12.900	\$ 1,069.93
110	5010-A-1	Water Main, Trenched, 12"		LF	376.000	\$ 78.75	\$ -	\$ -	\$ -	\$ -	362.900	\$ 28,578.38	362.900	\$ 28,578.37
120	5010-A-1	Water Main, Trenched, Restrained Joint, 12"		LF	100.000	\$ 127.65	\$ -	\$ -	\$ -	\$ -	100.000	\$ 12,765.00	100.000	\$ 12,765.00
130	5010-A-1	Water Main, Trenched, Restrained Joint, 16"		LF	145.000	\$ 197.00	\$ -	\$ -	\$ -	\$ -	166.200	\$ 32,741.40	166.200	\$ 32,741.40
140	5010-C-1	Fitting, Tee, DIP, 8"x8"		EA	1.000	\$ 850.00	\$ -	\$ -	\$ -	\$ -	1.000	\$ 850.00	1.000	\$ 850.00
150	5010-C-1	Fitting, Tee, DIP, 12"x6"		EA	1.000	\$ 1,010.00	\$ -	\$ -	\$ -	\$ -	1.000	\$ 1,010.00	1.000	\$ 1,010.00
160	5010-C-1	Fitting, Tee, DIP, 12"x12"		EA	2.000	\$ 1,394.50	\$ -	\$ -	\$ -	\$ -	2.000	\$ 2,789.00	2.000	\$ 2,789.00
170	5010-C-1	Fitting, Tee, DIP, 16"x6"		EA	1.000	\$ 1,715.00	\$ -	\$ -	\$ -	\$ -	1.000	\$ 1,715.00	1.000	\$ 1,715.00
180	5010-C-1	Fitting, Tee, DIP, 16"x16"		EA	3.000	\$ 2,595.00	\$ -	\$ -	\$ -	\$ -	3.000	\$ 7,785.00	3.000	\$ 7,785.00
190	5010-C-1	Fitting, Cap, DIP, 8"		EA	1.000	\$ 910.00	\$ -	\$ -	\$ -	\$ -	1.000	\$ 910.00	1.000	\$ 910.00
200	5010-C-1	Fitting, Cap, DIP, 12"		EA	2.000	\$ 1,090.00	\$ -	\$ -	\$ -	\$ -	2.000	\$ 2,180.00	2.000	\$ 2,180.00
210	5010-C-1	Fitting, Cap, DIP, 16"		EA	1.000	\$ 1,725.00	\$ -	\$ -	\$ -	\$ -	1.000	\$ 1,725.00	1.000	\$ 1,725.00
220	5010-C-1	Fitting, Bend, DIP, 8" 45 Degree		EA	2.000	\$ 600.00	\$ -	\$ -	\$ -	\$ -	2.000	\$ 1,200.00	2.000	\$ 1,200.00
230	5010-C-1	Fitting, Bend, DIP, 12" 45 Degree		EA	5.000	\$ 1,233.50	\$ -	\$ -	\$ -	\$ -	3.000	\$ 3,700.50	3.000	\$ 3,700.50
240	5010-C-1	Fitting, Reducer, DIP, 12"x8"		EA	1.000	\$ 2,218.00	\$ -	\$ -	\$ -	\$ -	1.000	\$ 2,218.00	1.000	\$ 2,218.00
250	5010-C-1	Fitting, Reducer, DIP, 16"x8"		EA	1.000	\$ 2,385.75	\$ -	\$ -	\$ -	\$ -	1.000	\$ 2,385.75	1.000	\$ 2,385.75
260	5010-C-1	Fitting, Reducer, DIP, 16"x12"		EA	1.000	\$ 3,040.00	\$ -	\$ -	\$ -	\$ -	1.000	\$ 3,040.00	1.000	\$ 3,040.00
270	5010-999-A	Remove or Abandon Ex. Water Main 16"		LF	390.000	\$ 30.45	\$ -	\$ -	\$ -	\$ -	620.600	\$ 18,897.27	620.600	\$ 18,897.27
280	5010-999-B	Connect to Existing Water Main 16"		EA	4.000	\$ 1,125.00	\$ -	\$ -	\$ -	\$ -	4.000	\$ 4,500.00	4.000	\$ 4,500.00
290	5020-A	Valve, Gate Valve/Box, 8"		EA	2.000	\$ 3,320.00	\$ -	\$ -	\$ -	\$ -	2.000	\$ 6,640.00	2.000	\$ 6,640.00
300	5020-A	Valve, Gate Valve/Box, 12"		EA	3.000	\$ 6,020.00	\$ -	\$ -	\$ -	\$ -	3.000	\$ 18,060.00	3.000	\$ 18,060.00
310	5020-A	Valve, Butterfly Valve/Box, 16"		EA	2.000	\$ 6,820.00	\$ -	\$ -	\$ -	\$ -	2.000	\$ 13,640.00	2.000	\$ 13,640.00
320	5020-D	Fire Hydrant Assembly		EA	2.000	\$ 8,495.00	\$ -	\$ -	\$ -	\$ -	2.000	\$ 16,990.00	2.000	\$ 16,990.00
330	5020-E	Flushing Device, Blowoff		EA	4.000	\$ 1,200.00	\$ -	\$ -	\$ -	\$ -	2.000	\$ 2,400.00	2.000	\$ 2,400.00
340	5020-E	Flushing Device, Blowoff w/1" Corp. Stop		EA	4.000	\$ 600.00	\$ -	\$ -	\$ -	\$ -	2.000	\$ 1,200.00	2.000	\$ 1,200.00
350	5020-J	Remove Existing Hydrant Assembly		EA	1.000	\$ 1,275.00	\$ -	\$ -	\$ -	\$ -	1.000	\$ 1,275.00	1.000	\$ 1,275.00
360	5020-999-A	Fire Hydrant Extension, 6"		EA	1.000	\$ 685.00	\$ -	\$ -	\$ -	\$ -	1.000	\$ 685.00	1.000	\$ 685.00
370	5020-999-B	Fire Hydrant Extension, 12"		EA	1.000	\$ 755.00	\$ -	\$ -	\$ -	\$ -	\$ -	\$ -	0.000	\$ -
380	6010-B	Intake Type, SW-501		EA	4.000	\$ 3,540.00	\$ -	\$ -	1.000	\$ 3,540.00	3.000	\$ 10,620.00	4.000	\$ 14,160.00
390	6010-B	Intake Type, SW-502, 48"		EA	2.000	\$ 5,923.50	\$ -	\$ -	2.000	\$ 11,847.00	\$ -	\$ -	2.000	\$ 11,847.00

Line No.	Item ID	Description	Supplemental Description	Unit	Original QTY	Unit Price	Division I (50/50)		Division II (County)		Division III (CITY)		TOTAL QTY PLACED	FINAL AMOUNT
							QTY	Extension	QTY	Extension	QTY	Extension		
400	6010-B	Intake Type, SW-505		EA	4.000	\$ 4,573.65		\$ -	2.000	\$ 9,147.30	2.000	\$ 9,147.30	4.000	\$ 18,294.60
410	6010-B	Intake Type, SW-509		EA	1.000	\$ 4,435.00		\$ -	1.000	\$ 4,435.00		\$ -	1.000	\$ 4,435.00
420	6010-B	Intake Type, SW-512, 24"		EA	1.000	\$ 1,926.00		\$ -		\$ -	1.000	\$ 1,926.00	1.000	\$ 1,926.00
430	6010-H-2	Remove Storm Intake		EA	3.000	\$ 500.00		\$ -	3.000	\$ 1,500.00		\$ -	3.000	\$ 1,500.00
440	6010-999-A	Storm Manhole, SW-401, 48", Base, Ring and Cover & External Seal		EA	1.000	\$ 3,963.00		\$ -	1.000	\$ 3,963.00		\$ -	1.000	\$ 3,963.00
450	6010-999-B	Storm Manhole, SW-401, 48"		VF	7.800	\$ 394.30		\$ -	9.000	\$ 3,548.70		\$ -	9.000	\$ 3,548.70
460	7010-A	Pavement, PCC, 7"		SY	8645.000	\$ 50.50	5261.455	\$ 265,703.48	2121.517	\$ 107,136.61	1013.528	\$ 51,183.16	8396.500	\$ 424,023.25
470	7010-A	Median Pavement, PCC, 6"		SY	46.000	\$ 75.40		\$ -	33.600	\$ 2,533.44	22.600	\$ 1,704.04	56.200	\$ 4,237.48
480	7010-999-A	Integral Colored PCC Pavement, 6"		SY	272.000	\$ 115.85		\$ -	109.550	\$ 12,691.37	83.950	\$ 9,725.61	193.500	\$ 22,416.98
490	7010-999-B	Reinforced Integral Colored PCC Pavement, 6"		SY	79.000	\$ 153.65		\$ -	39.250	\$ 6,030.76	39.250	\$ 6,030.76	78.500	\$ 12,061.52
500	7030-A-1	Remove Sidewalk		SF	2789.000	\$ 0.50		\$ -	2789.000	\$ 1,394.50		\$ -	2789.000	\$ 1,394.50
510	7030-E	Sidewalk, PCC, 4"		SF	2320.000	\$ 6.00		\$ -	2328.600	\$ 13,971.60		\$ -	2328.600	\$ 13,971.60
520	7030-E	Sidewalk, PCC, 6"		SF	3933.000	\$ 6.90		\$ -	2118.121	\$ 14,615.03	1951.579	\$ 13,465.90	4069.700	\$ 28,080.93
530	7030-G	Detectable Warnings		SF	360.000	\$ 45.00		\$ -	216.000	\$ 9,720.00	144.000	\$ 6,480.00	360.000	\$ 16,200.00
540	7030-H-1	Driveway Pavement, PCC, 6"		SY	168.000	\$ 61.50	113.844	\$ 7,001.41	43.756	\$ 2,690.99		\$ -	157.600	\$ 9,692.40
550	7030-H-3	Driveway Granular, 6"		Tons	18.000	\$ 62.00	18.000	\$ 1,116.00		\$ -		\$ -	18.000	\$ 1,116.00
560	7030-999-A	Temporary Access Drive		LS	1.000	\$ 15,090.00		\$ -	1.000	\$ 15,090.00		\$ -	1.000	\$ 15,090.00
570	7040-H	Pavement Removal, Street/Driveway		SY	2250.000	\$ 4.00	2250.000	\$ 9,000.00		\$ -		\$ -	2250.000	\$ 9,000.00
580	8020-D	Painted Pavement Markings, High Build, Yellow		STA	18.600	\$ 143.00		\$ -	9.650	\$ 1,379.95	9.650	\$ 1,379.95	19.300	\$ 2,759.90
590	8020-D	Painted Pavement Markings, High Build, White		STA	23.600	\$ 143.00		\$ -	12.085	\$ 1,728.16	12.085	\$ 1,728.16	24.170	\$ 3,456.31
600	8020-M	Grooving for Pavement Markings		STA	42.200	\$ 66.00		\$ -	18.165	\$ 1,198.89	18.165	\$ 1,198.89	36.330	\$ 2,397.78
610	8030-A	Temporary Traffic Control		LS	1.000	\$ 9,350.00	1.000	\$ 9,350.00		\$ -		\$ -	1.000	\$ 9,350.00
620	8030-999-A	Business Signage		SF	50.000	\$ 33.00	12.500	\$ 412.50		\$ -		\$ -	12.500	\$ 412.50
630	8040-B	Traffic Signs		SF	255.000	\$ 50.00	255.000	\$ 12,750.00		\$ -		\$ -	255.000	\$ 12,750.00
640	8040-999-A	Furnish and Install U-Post		EA	20.000	\$ 220.00	20.000	\$ 4,400.00		\$ -		\$ -	20.000	\$ 4,400.00
650	8040-999-B	Furnish and Install Round Steel Post/Anchor		EA	25.000	\$ 1,375.00	25.000	\$ 34,375.00		\$ -		\$ -	25.000	\$ 34,375.00
660	9010-A	Conventional Seeding, Fertilizing, and Mulching, Temporary		AC	3.900	\$ 1,100.00		\$ -		\$ -		\$ -	0.000	\$ -
670	9010-B	Hydraulic Seeding, Fertilizing, and Hydromulching, Permanent, Type 1		AC	1.200	\$ 6,820.00	0.200	\$ 1,364.00	0.600	\$ 4,092.00	0.400	\$ 2,728.00	1.200	\$ 8,184.00
680	9010-B	Hydraulic Seeding, Fertilizing, and Hydromulching, Permanent, Type 2		AC	2.700	\$ 6,829.00	2.300	\$ 15,706.70	0.400	\$ 2,731.60		\$ -	2.700	\$ 18,438.30
690	9040-A-2	SWPPP Management		LS	1.000	\$ 2,500.00	1.000	\$ 2,500.00		\$ -		\$ -	1.000	\$ 2,500.00
700	9040-F-1	Wattle 9", Furnish, Install, Maintain and Remove		LF	550.000	\$ 4.40	40.000	\$ 176.00		\$ -		\$ -	40.000	\$ 176.00
710	9040-N-1	Silt Fence, Furnish, Install, Maintain and Remove		LF	3085.000	\$ 4.40	118.000	\$ 519.20		\$ -		\$ -	118.000	\$ 519.20
720	9040-R	Turf Reinforcement Mat, Type 2		SQ	5.000	\$ 100.00		\$ -	0.000	\$ -		\$ -	0.000	\$ -
730	9040-999-A	Erosion Control		LS	1.000	\$ 6,000.00	1.000	\$ 6,000.00		\$ -		\$ -	1.000	\$ 6,000.00
740	11,020-A	Mobilization		LS	1.000	\$ 100,000.00	1.000	\$ 100,000.00		\$ -		\$ -	1.000	\$ 100,000.00
750	SP-1	Pavement Surface Correction		SY	260.000	\$ 35.00		\$ -		\$ -		\$ -	0.000	\$ -
760	SP-2	Conduit, PVC, Schedule 80, 2"		LF	360.000	\$ 13.50		\$ -		\$ -	360.000	\$ 4,860.00	360.000	\$ 4,860.00
770	SP-3	Conduit, PVC, Schedule 40, 2"		LF	440.000	\$ 12.00		\$ -		\$ -	440.000	\$ 5,280.00	440.000	\$ 5,280.00
780	SP-4	Trench, 30" Deep		LF	800.000	\$ 4.25		\$ -		\$ -	800.000	\$ 3,400.00	800.000	\$ 3,400.00
790	SP-5	Junction Box		EA	1.000	\$ 3,750.00		\$ -		\$ -	1.000	\$ 3,750.00	1.000	\$ 3,750.00
<b>CHANGE ORDER NO. 1 NEW ITEMS</b>														
800	7010-108-A-0	Pavement, PCC	Integral Colored PCC Pavement 7-Inch - Standard Broom	SY	0.000	\$ 125.60	350.000	\$ 43,960.00		\$ -		\$ -	350.000	\$ 43,960.00

Line No.	Item ID	Description	Supplemental Description	Unit	Orginal QTY	Unit Price	Division I (50/50)		Division II (County)		Division III (CITY)		TOTAL QTY PLACED	FINAL AMOUNT
							QTY	Extension	QTY	Extension	QTY	Extension		
<b>CHANGE ORDER NO. 2 NEW ITEMS</b>														
810	2599-9999005	('EACH' ITEM)	Install City Provided Fire Hydrant Assembly	EACH	0.000	\$ 4,000.00		\$ -		\$ -	1.000	\$ 4,000.00	1.000	\$ 4,000.00
<b>CHANGE ORDER NO. 3 NEW ITEMS</b>														
820	5010-108-C-1	Fitting	16-inch 22.5 deg	EA	0.000	\$ 2,510.40		\$ -		\$ -	1.000	\$ 2,510.40	1.000	\$ 2,510.40
830	5010-108-C-1	Fitting	16-inch 45 deg	EA	0.000	\$ 2,539.75		\$ -		\$ -	1.000	\$ 2,539.75	1.000	\$ 2,539.75
840	7010-108-G-0	Concrete Median	PCC, 6-inch	SY	0.000	\$ 81.00		\$ -	52.000	\$ 4,212.00		\$ -	52.000	\$ 4,212.00
							<b>Division I</b>	<b>Division II</b>		<b>Division III</b>		<b>PROJECT</b>		
							<b>TOTAL \$ 694,278.38</b>	<b>TOTAL \$ 366,169.55</b>		<b>TOTAL \$ 415,840.78</b>		<b>TOTAL \$ 1,476,288.71</b>		

**WOODBURY COUNTY BOARD OF SUPERVISORS AGENDA ITEM(S) REQUEST FORM**

Date: 2/22/2024

Weekly Agenda Date: 2/27/2024

**ELECTED OFFICIAL / DEPARTMENT HEAD / CITIZEN:** Supervisor J.Taylor

**WORDING FOR AGENDA ITEM:**

Information on Reconsideration of the Present Plan for a Roundabout and Closure of Access to Old Lakeport at the Juncture of Elk Creek and Christy Road in Sioux City

**ACTION REQUIRED:**

Approve Ordinance

Approve Resolution

Approve Motion

Public Hearing

Other: Informational

Attachments

**EXECUTIVE SUMMARY:**

On February 22, a public information meeting was held at Morningside Assembly of God Church. More than 30 residents attended. Many of them shared concerns with me as the representative from the Board of Supervisors and Alex Watters (the lone City of Sioux Council member). With appreciation, County Engineer Mark Nahra stayed until 6 p.m. along with his City of Sioux City Engineer counterpart Gordon Phair and staff from DGR.

The Board of Supervisors should give direction for the county engineer to study all viable options for the 19 homes without vehicle access for the 2-3 months during construction. This was far and away the greatest source of contention to include concerns shared below.

The project intent originally addressed several needs: paving to new development that typically does not abut to an old intersection where the city plans to do utility work; 10-15 year future projections of increased traffic from such increased development; the difficult issue of egressing from the dead-end section of Old Lakeport onto Christy Road especially turning left.

**BACKGROUND:**

The greatest amount of feedback that I heard was with those concerned about access to include parking vehicles and vandalism, elderly/infirm people carrying groceries or driving back and forth from residents to a parking lot across the street in a golf cart; groceries; package deliveries; trash pick up; weather damage from normally garaged vehicles; child-seat laws or larger families normally in a mini-van; safety and security at night. The prospect of this for 2-3 months made people overwhelmingly share opposition to the project.

-This is an irony because the project was sold in no small part on the inability of those folks to egress from the dead-end portion of Old Lakeport onto Christy Road. I spoke to 7 households that night with a promise of hearing from more in the future. When residents asked why access couldn't be given over a certain path, the design team answered how one leech field could not be traversed without ruining a homeowner's septic system. Many shared that the increased signage has helped mitigate the turning issues from Old Lakeport and that given the lack of access during a shutdown, they would rather things stayed the same the way they are.

My greatest heartburn came from a resident who said that this project was going to be done no matter how much public input was given, so what was the point of elected officials being there. I assured her that though I'm one person, our Board takes citizens' concerns very seriously and is responsive as I believe both our elected bodies are.

I wanted to see if the engineers could be sent back to the drawing board regarding access-and I'm understanding there may be a possibility of an alternative after all. I would also like to see if project opposition was the case if the neighborhood access issue was solved (it seemed that opposition went down by at least some homeowners).

At the very least, it seems wise to "tap the brakes" and seek public input exploring all possible avenues. Similarly to what happened when we actually came to the hearing for a newly proposed drainage district (when things become soon-to-be reality with "real world" implications) then people voice their concerns the most specifically and passionately. I also believe that public notice should be sent informing affected landowners of any upcoming agenda item. As much as we believe people will follow our Board agenda, when projects affect them this specifically, it is a courtesy that can go a long way.

**FINANCIAL IMPACT:**

**IF THERE IS A CONTRACT INVOLVED IN THE AGENDA ITEM, HAS THE CONTRACT BEEN SUBMITTED AT LEAST ONE WEEK PRIOR AND ANSWERED WITH A REVIEW BY THE COUNTY ATTORNEY'S OFFICE?**

Yes  No

**RECOMMENDATION:**

Receive the information, hold a public agenda item on 3-5-2024 and consider the following:

Completing only the paving portion of Elk Creek Road as a standalone project.  
Completing the roundabout project additionally upon alternative access/egress from residents' homes.  
Alternatively completing an alternate access route long-term from the dead-end portion of Old Lakeport.

**ACTION REQUIRED / PROPOSED MOTION:**

Receive the information, hold a public agenda item on 3-5-2024 and consider the following:

Completing only the paving portion of Elk Creek Road as a standalone project.  
Completing the roundabout project additionally upon alternative access/egress from residents' homes.  
Alternatively completing an alternate access route long-term from the dead-end portion of Old Lakeport.

Date: 2/23/2024

Discussion items for Elk Creek Road Project:

Project Scope	Length 0.42 miles
	Elk Creek Road Grading and Paving plus intersection reconstruction

Project connects the Elk Creek Road pavement by the Residences at Elk Creek subdivision to the intersection of Christy Road/Old Lakeport Road/Southern Hills Road and Elk Creek Road. Cost share between the city and county is approximately 50-50 for the project. Project is undertaken under the terms of a letter of agreement between the Sioux City Council and the Woodbury County Board of Supervisors. Both governmental bodies approved development of the project.

Preliminary Total Project Cost estimate: \$1,709,086

Breakout Stage Cost:	Stage 1-	Elk Creek Grade and Pave:	\$ 787,323
	Stage 2-	Intersection reconstruction:	\$ 930,763

**This is not a \$2 million roundabout project.** Reconstruction of the intersection is only part of the project (~55% of total project cost). Whether a roundabout design is built or a standard four-way intersection is reconstructed, the intersection work will take approximately the same amount of time. The consultant is providing a diagram showing the footprint of the existing intersection on top of the roundabout for presentation at the Board meeting on February 27th. The existing footprint of intersection shows that the roundabout is only slightly larger but allows all five legs of the intersection to be accommodated within roughly the same footprint as the original intersection design and will smoothly allow all traffic to be accommodated.

Current condition: - Gravel Road on Elk Creek Road alignment east of the intersection.  
Intersection pavement is a PCC Pavement constructed in 1989.  
Pavement age is 35 years.

Proposed improvement: Elk Creek Road - grading and 24-foot-wide PCC Paving with 6' Granular Shoulders  
Intersection to be reconstructed with PCC. Reconstructing the intersection consists of changing intersection from current two-lane intersection E-W and N-S with fifth intersection leg 40 feet +/- NW of the intersection with a roundabout bringing all five streets into a single intersection. Sidewalks, utility improvements, and storm sewer improvements are also included in the project.

The intersecting leg from the NW is a dead end portion of Old Lakeport Road serving 18 residences. Currently the dead-end road outlets to Christy Road approximately 40' north of four way intersection. As traffic has grown in the area following the construction of new medical offices and commercial development, at least three residents have complained to county engineer about difficulty entering traffic on Christy Road and reported that the intersection is sometimes blocked by traffic backed up at the southbound stop sign. The county added a "Do Not Block Intersection" sign several years ago. Reported results are mixed on the effectiveness of this sign.

Project construction details: The project is divided into two stages. The first stage is grading and paving of Elk Creek Road. The start date is mid-May for this work. While the Elk Creek Road is underway, utilities will be relocated at the intersection. Once utilities are relocated, the reconstruction at the intersection will begin.

Project goals:

- 1) Grade and pave Elk Creek Road to improve the roadway for use by area residents and encourage additional development in the area.
- 2) Provide access to the intersection for residents on the dead-end road that is equal to access of the other four legs of the intersection so that the residents of this street can safely enter traffic in the intersection.

While not all residents on the dead end seem to agree on the whether access to Christy Road is a problem at the current intersections, based on comments I received at Thursday night's meeting much of their frustration with the project and the proposed intersection reconstruction was due to the loss of access to drive home to their respective residences during the project. The inconvenience of parking in the church parking lot and walking or using provided golf carts while the intersection construction underway was deemed to be unacceptable by residents on the dead end. Any improved access to the intersection provided by the roundabout was not deemed worth the temporary inconvenience.

The original plan for access for residents on the dead end had been to construct a temporary road through an easement across the Agnes property to Southern Hills Drive west of the intersection closure. This was found to be impractical due to this easement area being on top of the leaching field for the Agnes' septic system. A temporary access road would have damaged the septic system leaching field.

The alternative access accommodation proposed at the meeting was to put a wood chip surfaced walking trail/golf cart path across the Agnes easement. This type of traffic would not damage the septic leaching field, but would provide access. Parking spots would be leased from the church across the street. This alternative was not deemed adequate by residents who commented at the meeting. Golf carts have been used on other county projects when paving disrupts access to homes in a project corridor. Sioux City's normal policy is to require residents to walk home during street construction.

In the course of the meeting, it was learned that the residence across from the Agnes property had changed hands and that an easement might be able to be obtained from the new owner. City staff is pursuing this option over the course of the next week and the county engineer will report on the feasibility of this option on March 5. It is hoped that if continuous construction access to homes is provided, the residents' objections to the project will be addressed.

Emergency vehicle access and garbage pickup access concerns have been addressed by engineering staff working with Sergeant Bluff fire and rescue and requiring the contractor to assist with the collection of garbage. Delivery of mail and packages is also a concern. Mailboxes are typically relocated during construction. Package delivery concerns will be addressed with the contractor. Most of these issues should be addressed if a temporary road can be built off Christy Road as is being worked on by city staff.

## NEXT STEPS:

Tabling the project could jeopardize completion of all work prior to the winter of 2024. The current project timetable with work beginning in May should ensure completion in one construction season.

At this point, I recommend that the Board allow the consultant and city and county engineering staff to address the concerns expressed at the meeting. Most of the residents' objections can be addressed. It is too early to pull the plug on the project.

Traffic will continue to grow at this intersection as development continues in the area. If the replacement of the intersection pavement is not done now, greater disruption to higher volumes of traffic will be incurred 5, 10, or 15 years from now and the access problems for the residents on the NW leg of Old Lakeport Road will only grow. Regardless of when the work is done, this year, or in 10 years, some inconvenience for these residents will occur. By delaying intersection construction today, we only kick the can down the road. The board has done this on other projects, such as 220<sup>th</sup> Street. Not only will the work be no less disruptive to these peoples' lives in the future, but it will be more costly to the city and county as construction costs will only continue to grow.

Woodbury County  
 Current Proposed Budget  
 For the Year Ending June 30, 2027  
 As of 4-7-2026

	General Basic Fund 0001	General Supp Fund 0002	Rural Basic Fund 0011	Rural Supp Fund 0012	Debt Service Fund 2000
Current Revenue Budget	\$ 41,009,946	\$ 16,362,963	\$ 3,978,752	\$ -	\$ 7,304,697
Current Expenditures Budget	\$ (41,809,226)	\$ (17,101,249)	\$ (4,144,608)	\$ -	\$ (7,304,697)
Increase/Decrease in Cash Balance	\$ (799,280)	\$ (738,286)	\$ (165,856)	\$ -	\$ -
Projected Cash Balance 6-30-2026	\$ 10,045,349	\$ 842,637	\$ 600,392	\$ -	\$ 298,301
Increase/(Decrease) in Fund Balance	\$ (799,280)	\$ (738,286)	\$ (165,856)	\$ -	\$ -
Estimated Cash Balance 6-30-2027	\$ 9,246,070	\$ 104,351	\$ 434,536	\$ -	\$ 298,301
Estimated Reserve % to FY27 Budget	22.1%	0.6%	10.5%	#DIV/0!	4.1%
20% Reserve Level	8,361,845	3,420,250	828,922	-	1,460,939

	FY 2026	Proposed FY 2027	Change	% Change
General Basic	3.81720	3.70602	(0.11118)	-2.9%
General Supplemental	2.41826	2.59945	0.18119	7.5%
Debt Service	0.87572	0.80571	(0.07001)	-8.0%
<b>Total Countywide</b>	<b>7.11118</b>	<b>7.11118</b>	<b>(0.00000)</b>	<b>0.0%</b>
Rural Basic	2.36559	2.41287	0.04728	2.0%
Rural Supplemental	0.04728	-	(0.04728)	-100.0%
<b>Total Rural</b>	<b>9.52405</b>	<b>9.52405</b>	<b>(0.00000)</b>	<b>0.0%</b>